

**CALIFORNIA COASTAL COMMISSION**

South Coast Area Office  
200 Oceangate, Suite 1000  
Long Beach, CA 90802-4302  
(562) 590-5071

January 27, 2005

**RECORD PACKET COPY**

**TO:** Commissioners and Interested Persons

**FROM:** Peter Douglas, Executive Director  
Deborah Lee, Deputy Director  
Pam Emerson, Los Angeles County Area Supervisor  
Charles Posner, Staff Analyst

**Th13a**

**SUBJECT:** Concurrence with the Executive Director's determination that the action of the City of Long Beach accepting certification with suggested modifications of Major LCP Amendment No. 1-04 (LOB-MAJ-1-04) is legally adequate. For Commission review at its February 17, 2005 meeting in Monterey.

**STAFF RECOMMENDATION**

Staff recommends that the Commission concur with the Executive Director's determination that the City's action is legally adequate.

**BACKGROUND**

On April 19, 2004, City of Long Beach Major Local Coastal Program (LCP) Amendment Request No. 1-04 was officially deemed submitted for Commission certification. Amendment No. 1-04 is comprised of Parts A and B. Part A, submitted for Commission certification by City Council Resolution No. C-28305, amends the zoning ordinance procedures and standards as they relate to outdoor sales events and computer arcades (See City Council Ordinance No. C-7881). Part B of the LCP amendment request, submitted by City Council Resolution No. C-28302, maps and dedicates (or designates) in perpetuity certain lands in the City for public park purposes. The LCP amendment affects only the LIP portion of the certified LCP.

On June 10, 2004, the Commission approved City of Long Beach LCP Amendment No. 1-04. Part A of the LCP Amendment was approved as submitted, effectively certifying City Council Ordinance No. C-7881 for immediate implementation in the City's coastal zone. The Commission approved Part B of LCP Amendment No. 1-04 with two suggested modifications. The suggested modifications directed the City Council to: A) provide a revised map, or series of maps, that designates the minimum 23 acres of parkland that comprise Shoreline Park as preserved by the LCP, and B) provide a revised map, or series of maps, that designates the entire Marina Green Park as public park, including the public parking lots.

On December 7 and 14, 2004, the Long Beach City Council unanimously adopted Resolution No. C-28489 and Council Ordinance No. C-7954 incorporating into the LCP the modifications suggested by the Commission pursuant to its June 10, 2004 approval of LCP Amendment No. 1-04. On January 3, 2005, the City submitted the modifications to the Executive Director for a determination that they are consistent with the Commission's action on June 10, 2004 (See Attachment).

As provided in Section 13544 of the California Code of Regulations, the Executive Director must determine whether the City's action is legally adequate and report that determination to the Commission. In this case, the Executive Director has determined that the City's action is legally adequate. Unless the Commission objects to the Executive Director's determination, the certification of LCP Amendment No. 1-04 shall become effective upon Commission concurrence with the Executive Director's determination and upon filing of the notice of the Commission's certification with the Secretary of the Resources Agency as provided by Public Resources Code Section 21080.5(d)(2)(v).

RESOLUTION NO. C-28489

CALIFORNIA  
COASTAL COMMISSION

1  
2  
3 A RESOLUTION OF THE CITY COUNCIL OF THE  
4 CITY OF LONG BEACH AUTHORIZING THE DIRECTOR OF  
5 PLANNING AND BUILDING TO SUBMIT TO THE  
6 CALIFORNIA COASTAL COMMISSION FOR ITS REVIEW  
7 AND CONSIDERATION AN ORDINANCE DESIGNATING  
8 AND DEDICATING IN PERPETUITY CERTAIN AREAS OF  
9 THE CITY FOR PARK PURPOSES  
10

11 WHEREAS, on December 23, 2003, the City Council of the City of Long  
12 Beach adopted Ordinance No. C-7894 designating and dedicating in perpetuity certain  
13 areas of the City for park purposes; and

14 WHEREAS, in order to certify the designation and dedication of parks in  
15 perpetuity, the California Coastal Commission has requested certain boundary changes  
16 to the maps of Marina Green Park, Rainbow Harbor Esplanade, and Long Beach  
17 Aquarium of the Pacific; and

18 WHEREAS, on December 14, 2004, the City Council of the City of  
19 Long Beach adopted Ordinance No. C-7954 amending and restating the  
20 designation and dedication in perpetuity of certain areas of the City for park purposes in  
21 accordance with the California Coastal Commission modifications; and

22 WHEREAS, it is the desire of the City Council to submit the amended and  
23 restated Ordinance to the California Coastal Commission for its review as an  
24 implementing Ordinance of the Long Beach Local Coastal Program (LCP); and

25 WHEREAS, the City Council gave full consideration to all facts and the  
26 proposals respecting the Ordinance at properly noticed and advertised public hearings;  
27 and

28 WHEREAS, the City Council approved the proposed changes to the LCP

Robert E. Shannon  
City Attorney of Long Beach  
333 West Ocean Boulevard  
Long Beach, California 90802-4664  
Telephone (562) 570-2200

Robert E. Shannon  
City Attorney of Long Beach  
333 West Ocean Boulevard  
Long Beach, California 90802-4664  
Telephone (562) 570-2200

1 by adopting the Amended and Restated Parks in Perpetuity Ordinance. The proposed  
2 Parks in Perpetuity Ordinance is to be carried out in a manner fully consistent with the  
3 Coastal Act and become effective in the Coastal Zone immediately upon Coastal  
4 Commission review and certification; and

5 NOW, THEREFORE, the City Council of the City of Long Beach resolves  
6 as follows:

7 Section 1. The Amended and Restated Ordinance dedicating and  
8 designating certain areas of the City in perpetuity for park purposes as adopted by  
9 Ordinance No. C- 7954 of the Long Beach City Council on December 14, 2004, a  
10 copy of which is attached to and incorporated in this resolution as Exhibit "A", is hereby  
11 submitted to the California Coastal Commission for its earliest review as to those parts  
12 of the Ordinance that directly affect land use matters in that portion of the California  
13 Coastal Zone within the City of Long Beach.

14 Sec. 2. The Director of Planning and Building of the City of Long Beach is  
15 hereby authorized to and shall submit a certified copy of this resolution, together with  
16 appropriate supporting materials, to the California Coastal Commission with a request  
17 for its earliest action, as an amendment to the Local Coastal Program that will take  
18 effect automatically upon Commission approval pursuant to the Public Resources Code  
19 or as an amendment that will require formal City Council adoption after Coastal  
20 Commission approval.

21 Sec. 3. This resolution shall take effect immediately upon its adoption by  
22 the City Council, and the City Clerk shall certify the vote adopting this resolution.

23 //

24 //

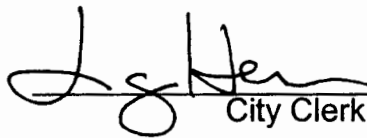
25  
26  
27  
28

1 I certify that this resolution was adopted by the City Council of the City of Long  
2 Beach at its meeting of December 7, 2004, by the following vote:

3  
4 Ayes: Councilmembers: Lowenthal, Baker, Colonna,  
5 O'Donnell, Kell, Richardson,  
6 Reyes Uranga, Gabelich, Lerch.


7 Noes: Councilmembers: None.  
8 \_\_\_\_\_

9 Absent: Councilmembers: None.  
10 \_\_\_\_\_

11  
12   
13 \_\_\_\_\_  
14 City Clerk

15  
16  
17  
18  
19  
20  
21  
22  
23  
24  
25  
26  
27  
28  
Robert E. Shannon  
City Attorney of Long Beach  
333 West Ocean Boulevard  
Long Beach, California 90802-4664  
Telephone (562) 570-2200

24 CERTIFIED AS A TRUE AND CORRECT COPY

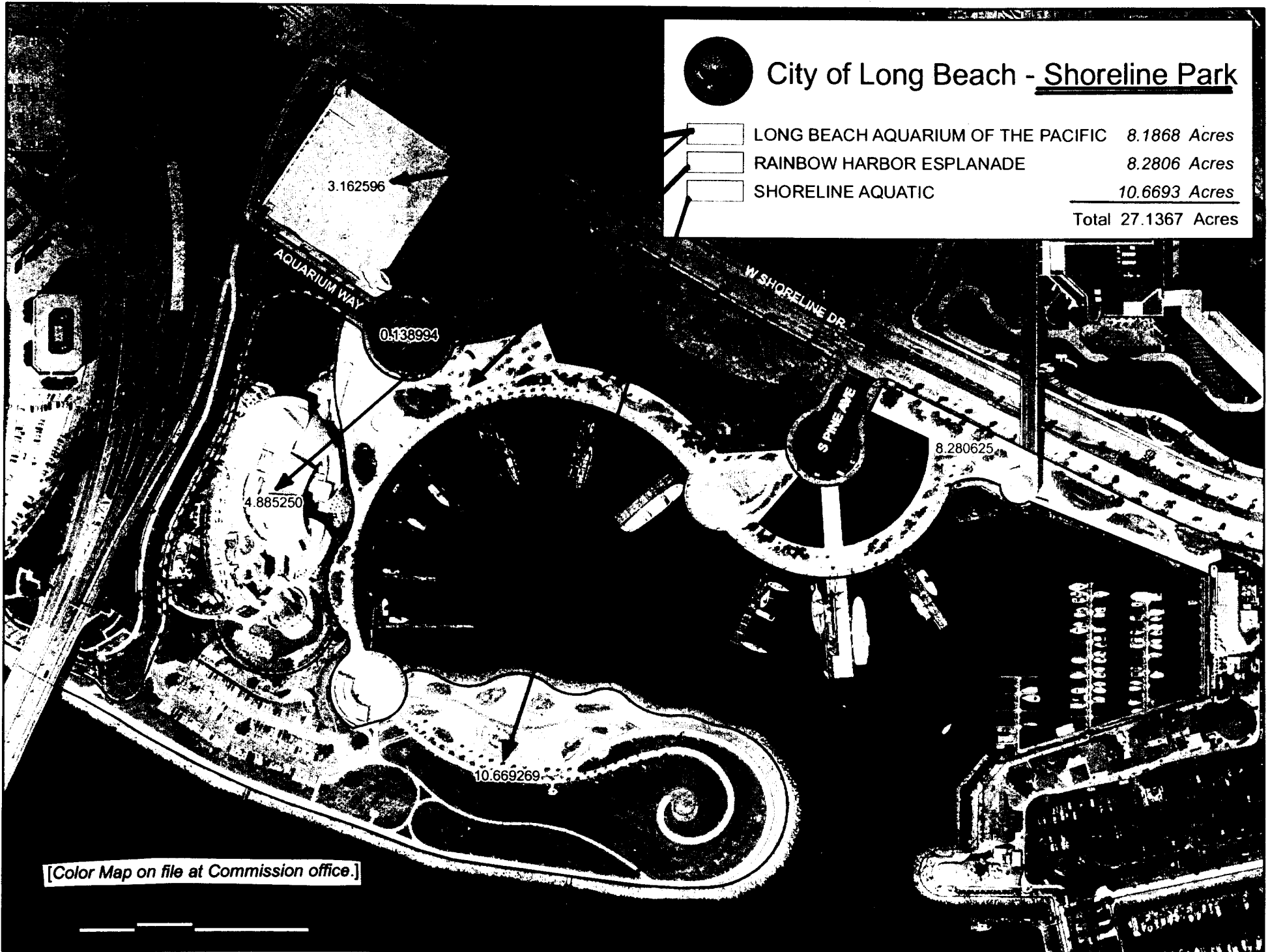
25   
26 \_\_\_\_\_  
27 CITY CLERK OF THE CITY OF LONG BEACH

28 DATE: DEC 29 2004

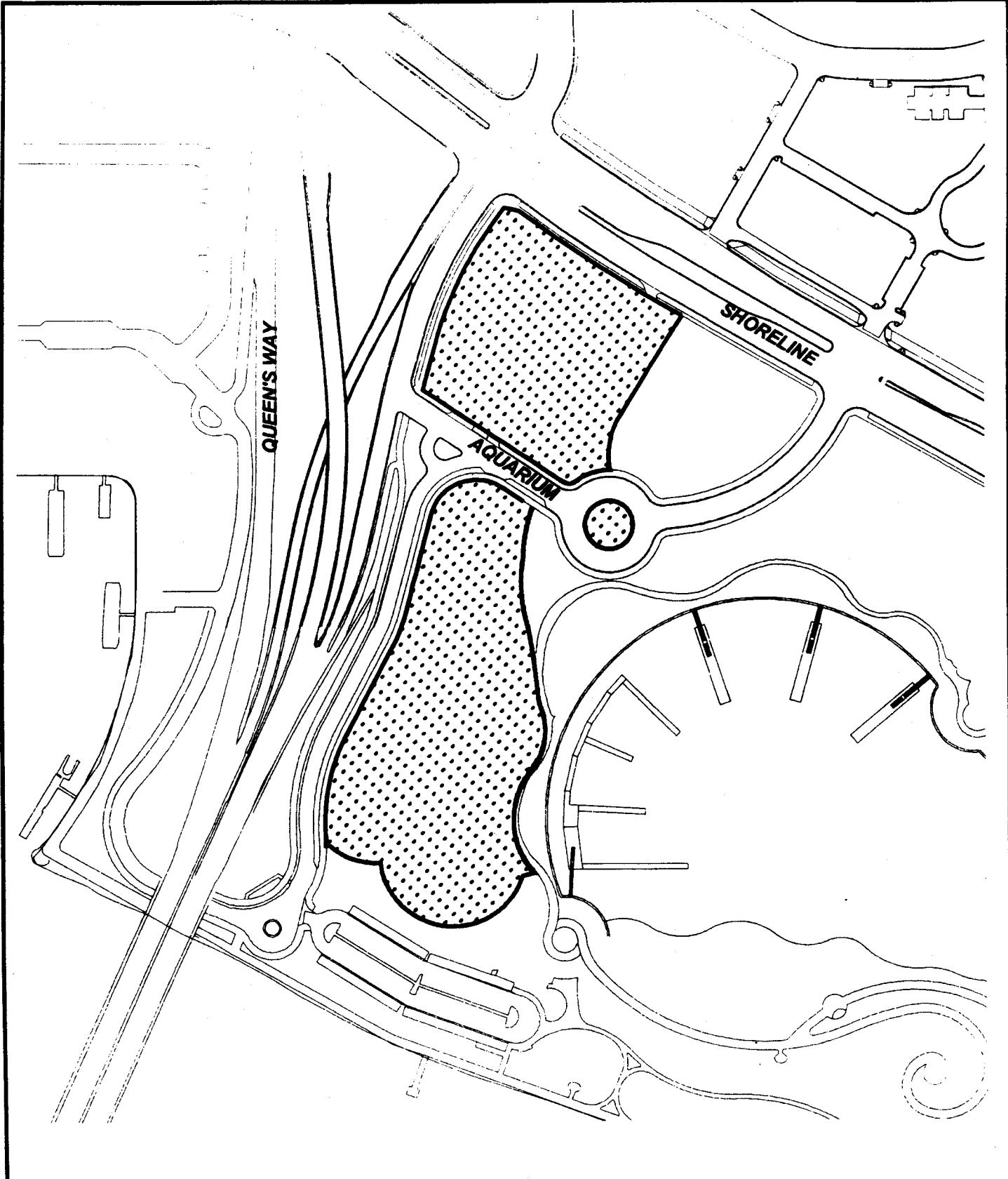


# City of Long Beach - Shoreline Park

	LONG BEACH AQUARIUM OF THE PACIFIC	8.1868 Acres
	RAINBOW HARBOR ESPLANADE	8.2806 Acres
	SHORELINE AQUATIC	10.6693 Acres
		<u>Total 27.1367 Acres</u>



[Color Map on file at Commission office.]



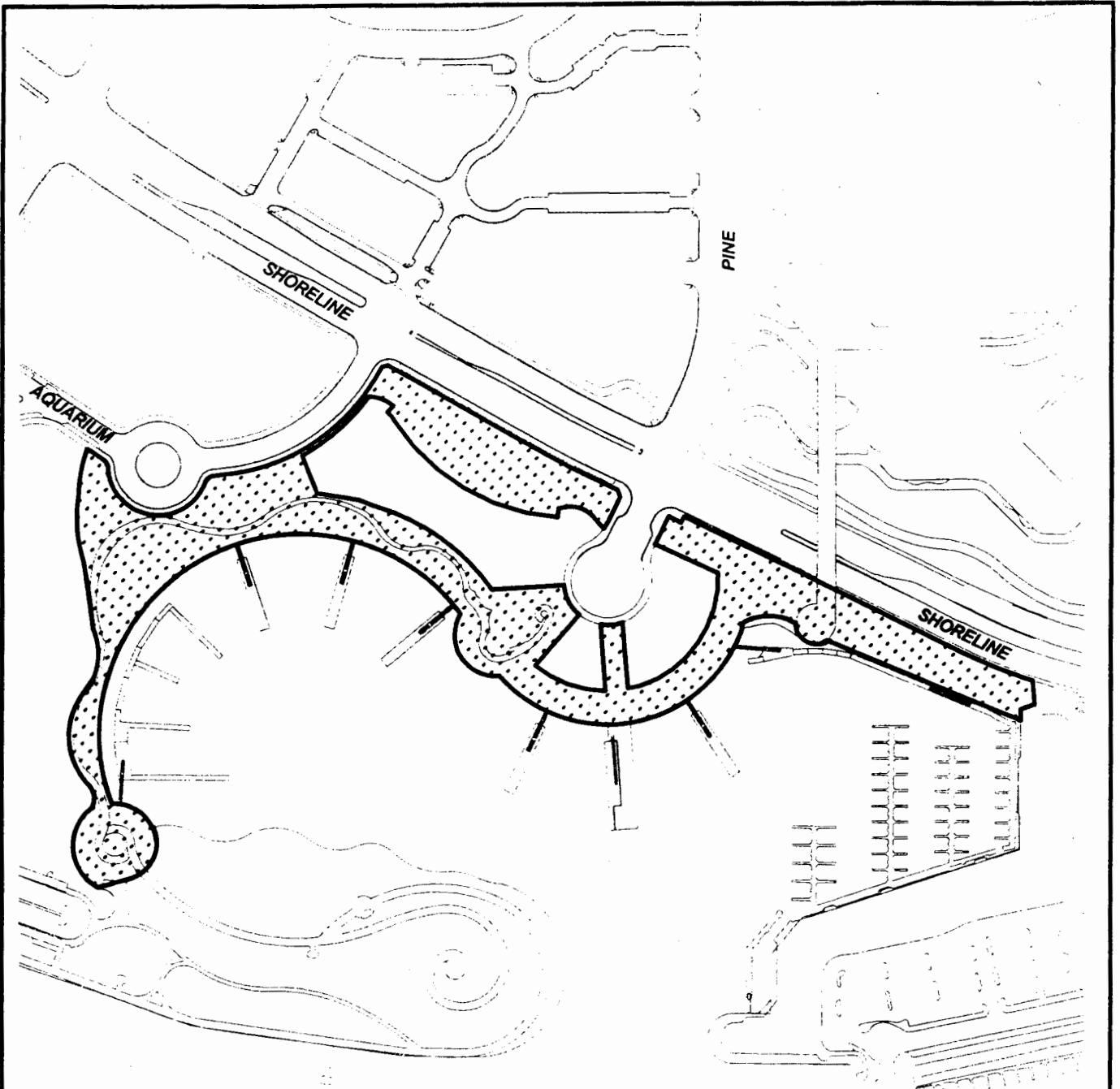
200 0 200 Feet

**City of Long Beach, California**  
**LONG BEACH**  
**AQUARIUM OF THE PACIFIC**  
**(Special Use Park)**

*Land Designated  
In Perpetuity As Public Park*

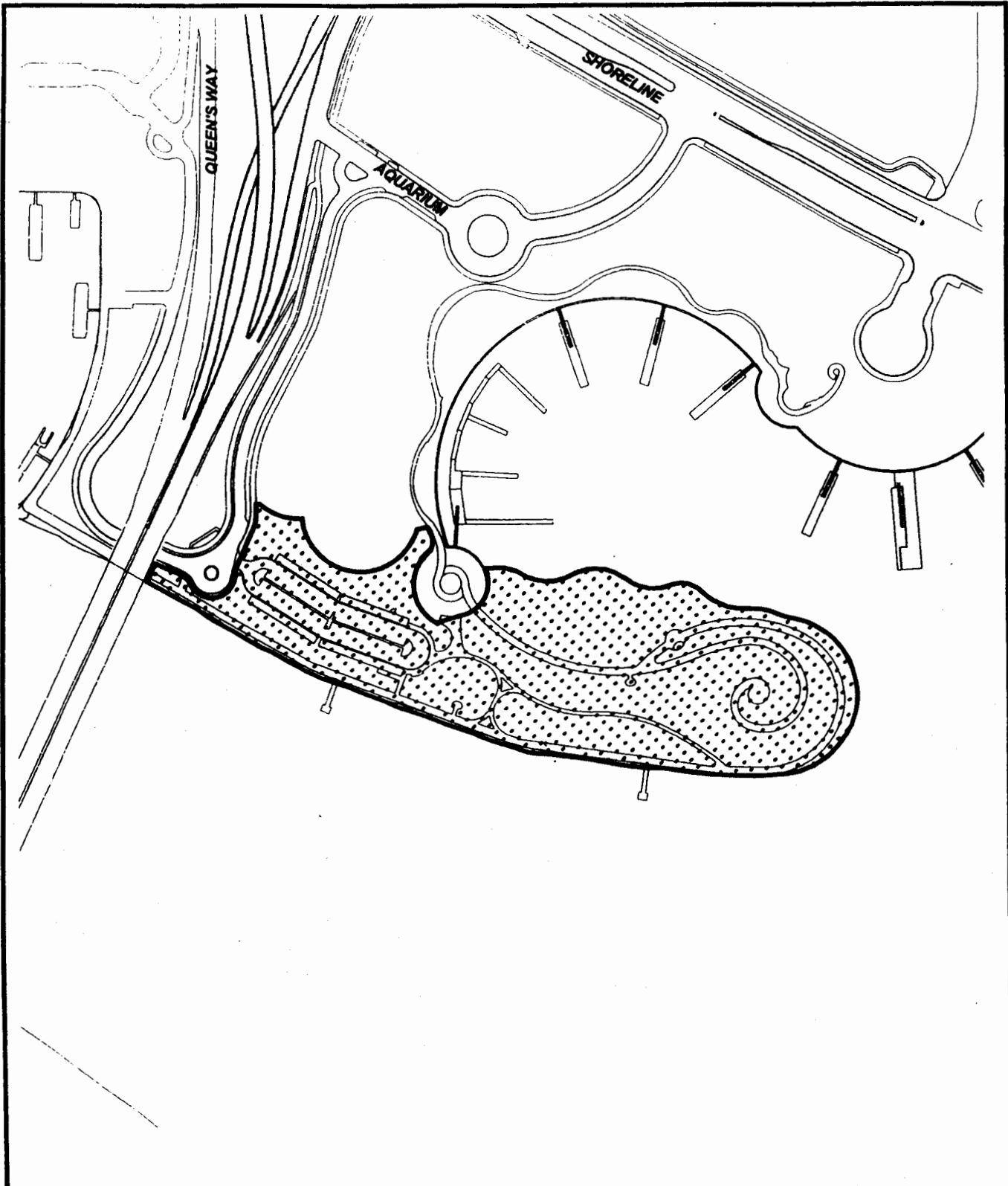
City of Long Beach Planning and Advanced Planning Division

**Exhibit "B"**



**City of Long Beach, California**  
**RAINBOW HARBOR ESPLANADE**  
**(Special Use Park)**  
**Land Designated**  
**In Perpetuity As Public Park**  
Dept of Planning & Building Advance Planning Division

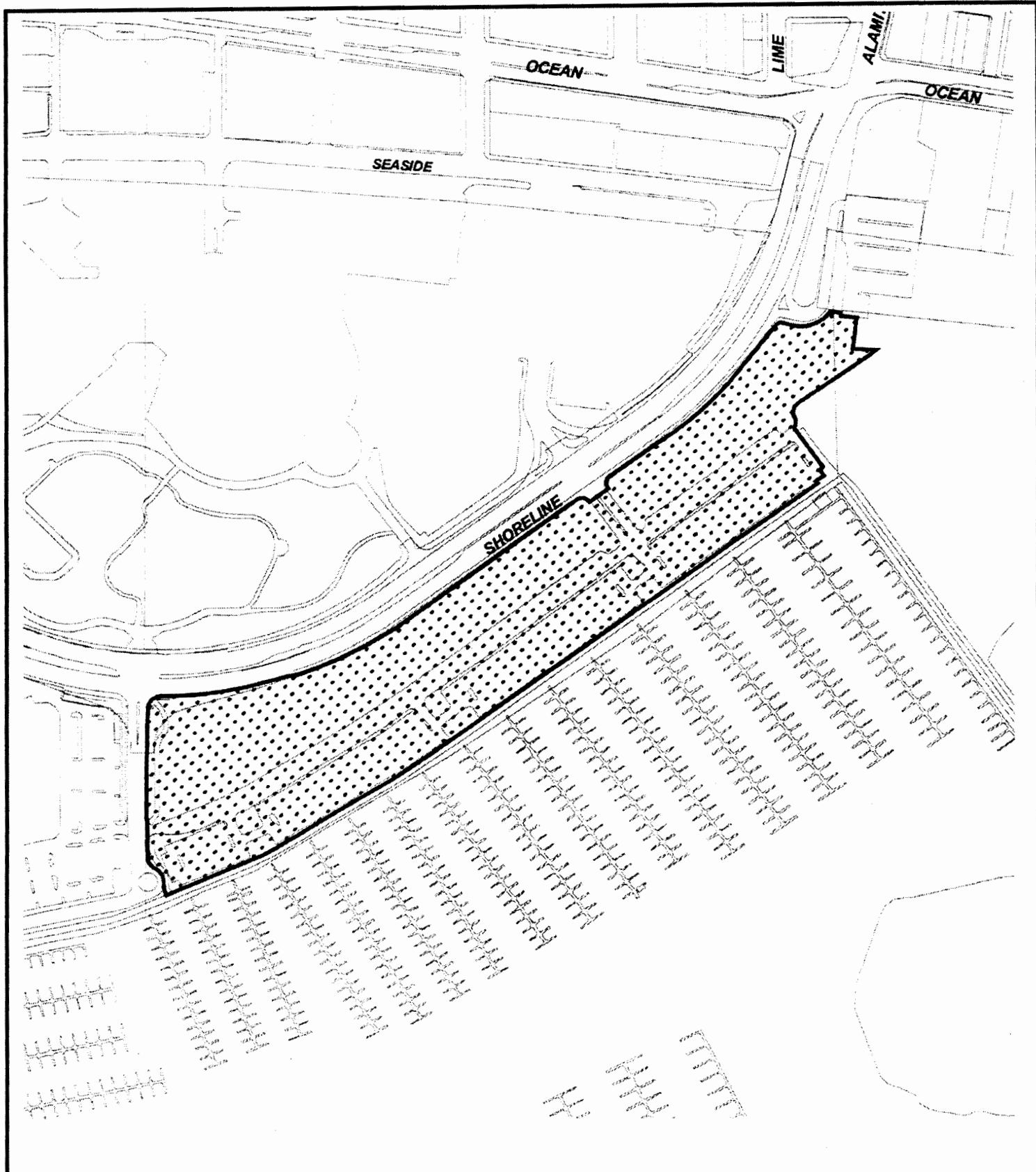
**Exhibit "B"**



**City of Long Beach, California**  
**SHORELINE AQUATIC PARK**  
**(Special Use Park)**  
*Land Designated  
In Perpetuity As Public Park*

Dept of Planning & Building Address Planning Division





200 0 200 Feet

**City of Long Beach, California**  
**MARINA GREEN PARK**  
**(Special Use Park)**  
*Land Designated  
In Perpetuity As Public Park*