

CALIFORNIA COASTAL COMMISSION  
South Coast Area Office  
200 Oceangate, Suite 1000  
Long Beach, CA 90802-4302  
(562) 590-5071

# Th 5e

Permit Application No. **5-09-060**

Date: May 27, 2009

Page 1 of 5



## ADMINISTRATIVE PERMIT

**APPLICANT:** Michael Younessi

### **PROJECT**

**DESCRIPTION:** Addition of 18 foot area of concrete deck cantilevered 5 feet beyond the bulkhead between two existing areas of concrete deck cantilevered 5 feet beyond the bulkhead for a total deck length of 92 feet (existing cantilevered deck segments are 36 feet and 38 feet in length). Also proposed is a 5 foot tall, tempered glass railing with etched design in glass along the perimeter of the deck.

### **PROJECT**

**LOCATION:** 4022 Morningstar Drive, Huntington Beach, Orange County

**EXECUTIVE DIRECTOR'S DETERMINATION:** The findings for this determination, and for any special conditions, appear on subsequent pages.

NOTE: P.R.C. Section 30624 provides that this permit shall not become effective until it is reported to the Commission at its next meeting. If one-third or more of the appointed membership of the Commission so request, the application will be removed from the administrative calendar and set for public hearing at a subsequent Commission meeting. Our office will notify you if such removal occurs.

This permit will be reported to the Commission at the following time and place:

**Thursday, June 11, 2009**                      **8:00 a.m.**  
Marina del Rey Hotel  
13534 Bali Way  
Marina del Rey, CA 90292  
(310) 301-1000

IMPORTANT - Before you may proceed with development, the following must occur:

Pursuant to 14 Cal. Admin. Code Sections 13150(b) and 13158, you must sign the enclosed duplicate copy acknowledging the permit's receipt and accepting its contents, including all conditions, and return it to our office. Following the Commission's meeting, and once we have received the signed acknowledgement and evidence of compliance with all special conditions, we will send you a Notice of Administrative Permit Effectiveness.

**BEFORE YOU CAN OBTAIN ANY LOCAL PERMITS AND PROCEED WITH DEVELOPMENT, YOU MUST HAVE RECEIVED BOTH YOUR ADMINISTRATIVE PERMIT AND THE NOTICE OF PERMIT EFFECTIVENESS FROM THIS OFFICE.**

PETER DOUGLAS  
Executive Director

By: Meg Vaughn  
Title: Coastal Program Analyst

**STANDARD CONDITIONS:**

1. Notice of Receipt and Acknowledgment. The permit is not valid and development shall not commence until a copy of the permit, signed by the permittee or authorized agent, acknowledging receipt of the permit and acceptance of the terms and conditions, is returned to the Commission office.
2. Expiration. If development has not commenced, the permit will expire two years from the date this permit is reported to the Commission. Development shall be pursued in a diligent manner and completed in a reasonable period of time. Application for extension of the permit must be made prior to the expiration date.
3. Interpretation. Any questions of intent or interpretation of any term or condition will be resolved by the Executive Director or the Commission.
4. Assignment. The permit may be assigned to any qualified person, provided assignee files with the Commission an affidavit accepting all terms and conditions of the permit.
5. Terms and Conditions Run with the Land. These terms and conditions shall be perpetual, and it is the intention of the Commission and the permittee to bind all future owners and possessors of the subject property to the terms and conditions.

**SPECIAL CONDITIONS:** See page five.

**EXECUTIVE DIRECTOR'S DETERMINATION (continued):**

The Executive Director hereby determines that the proposed development is a category of development, which, pursuant to PRC Section 30624, qualifies for approval by the Executive Director through the issuance of an Administrative Permit. Subject to Standard and Special Conditions as attached, said development is in conformity with the provisions of Chapter 3 of the Coastal Act of 1976 and will not have any significant impacts on the environment within the meaning of the California Environmental Quality Act. If located between the nearest public road and the sea, this development is in conformity with the public access and public recreation policies of Chapter 3.

**FINDINGS FOR EXECUTIVE DIRECTOR'S DETERMINATION:**

**A. Project Description**

The applicant proposes to add an 18 foot area of concrete deck cantilevered five feet beyond the bulkhead between two existing areas of concrete deck cantilevered five feet beyond the bulkhead for a total deck length of 92 feet (existing cantilevered deck segments are 36 feet and 38 feet in length). Also proposed is a five feet tall, tempered glass railing with etched design in glass along the perimeter of the deck. The 5 foot height is required due to the presence of a pool between the residence and the cantilevered deck. The etching in the glass railing is intended to prevent bird strikes. The proposed deck is associated with the adjacent single family residential use. Most of the Huntington Harbour water frontage is developed with single family homes, many of which also have cantilevered decks and boat docks. Virtually the entire water frontage in Huntington Harbour is supported by bulkheads. The nearest public access in the area is at Sunset County Beach,

located approximately one half mile west of the subject site.

Drainage from the deck will be directed to a new rain gutter to be installed to the existing and new deck area to intercept runoff and direct it to two catch basins. The catch basins will be fitted with fossil filters to filter runoff from the deck prior to discharge into the harbor. No products containing ammonia, sodium hypochlorite, chlorinated solvents, petroleum distillates or lye will be used on the deck, therefore, pollutants from those products will not drain to the harbor during or after construction. No bottom disturbing activities are proposed.

The proposed deck would cantilever over the waters of Huntington Harbor. In this area of Huntington Harbor, the water area is owned by the City of Huntington Beach. A letter inviting the City to join as co-applicant was sent on May 20, 2009 and to date no response has been received. In addition, an approval in concept was received from the City, indicating the City is aware of the project. Furthermore, a special condition is imposed stating that the approval of a coastal development permit for the project does not waive any public rights or interest that exist or may exist on the property.

The subject site is located within the City of Huntington Beach, which has a certified Local Coastal Program. However, due to the project location seaward of the mean high tide line, the project is within an area of the Commission's retained permit jurisdiction. Nonetheless, the City's certified Local Coastal Program may be used as guidance. The land use designation at the site is Open Space – Water (OS – W). The site is zoned Open Space Water Recreation. The proposed development is consistent with the City's certified LCP, specifically with Implementation Plan Chapter 213 Open Space District, which allows private cantilevered decks abutting residential uses, and with Chapter 210, which provides standards for cantilevered decks in Huntington Harbor in the Open Space Water Recreation zone.

Most of the existing residences that front along the waters of Huntington Harbor have cantilevered decks. The proposed deck is similar in function to the other cantilevered decks associated with residential development within Huntington Harbor. The proposed development is consistent with past Commission actions in the area. Thus, as conditioned, the proposed deck will have no adverse impact on coastal access or resources in the project vicinity, and is consistent with the Chapter 3 policies of the Coastal Act.

#### **B. PUBLIC ACCESS**

The proposed development will not affect the public's ability to gain access to, and/or to use the coast and nearby recreational facilities. Therefore, the development, as conditioned, conforms with Sections 30210 through 30214, Sections 30220 through 30224, and 30252 of the Coastal Act.

#### **C. WATER QUALITY**

The proposed development has a potential for a discharge of polluted runoff from the project site into coastal waters. The development, as proposed and as conditioned, incorporates design features to minimize the effect of construction and post construction activities on the marine environment. These design features include, but are not limited to, the appropriate management of equipment and construction materials, reducing runoff through the use of permeable surfaces, the use of non-invasive, drought tolerant vegetation to reduce and treat the runoff discharged from the site, and for the use of post construction best management practices to minimize the project's

adverse impact on coastal waters. Therefore, the Commission finds that the proposed development, as conditioned, conforms with Sections 30230 and 30231 of the Coastal Act regarding the protection of water quality to promote the biological productivity of coastal waters and to protect human health.

**D. LOCAL COASTAL PROGRAM**

Coastal Act section 30604(a) states that, prior to certification of a local coastal program (“LCP”), a coastal development permit can only be issued upon a finding that the proposed development is in conformity with Chapter 3 of the Act and that the permitted development will not prejudice the ability of the local government to prepare an LCP that is in conformity with Chapter 3. An LCP for the City of Huntington Beach was effectively certified in March 1985. However, the proposed development is occurring within an area of the Commission’s original permit jurisdiction, due to the project location seaward of the mean high tide line. Consequently, the standard of review is the Coastal Act and the City’s LCP is used only as guidance. As conditioned, the proposed development is consistent with Chapter 3 of the Coastal Act and with the certified LCP for the area.

**E. CALIFORNIA ENVIRONMENTAL QUALITY ACT**

As conditioned, there are no feasible alternatives or additional feasible mitigation measures available that would substantially lessen any significant adverse effect that the activity may have on the environment. Therefore, the Commission finds that the proposed project, as conditioned to mitigate the identified impacts, is the least environmentally damaging feasible alternative and can be found consistent with the requirements of the Coastal Act to conform to CEQA.

**SPECIAL CONDITIONS:**

**1. Construction Responsibilities and Debris Removal**

- (a) No construction materials, equipment, debris, or waste shall be placed or stored where it may be subject to wave, wind, or rain erosion and dispersion.
- (b) Any and all construction material shall be removed from the site within 10 days of completion of construction.
- (c) Machinery or construction materials not essential for project improvements shall not be allowed at any time in the intertidal zone.
- (d) If turbid conditions are generated during construction a silt curtain shall be utilized to control turbidity.
- (e) Floating booms shall be used to contain debris discharged into coastal waters and any debris discharged shall be removed as soon as possible but no later than the end of each day.
- (f) Non-buoyant debris discharged into coastal waters shall be recovered by divers as soon as possible after loss.

**2. Public Rights**

The Coastal Commission's approval of this permit shall not constitute a waiver of any public rights that exist or may exist on the property. The permittee shall not use this permit as evidence of a waiver of any public rights that may exist on the property.

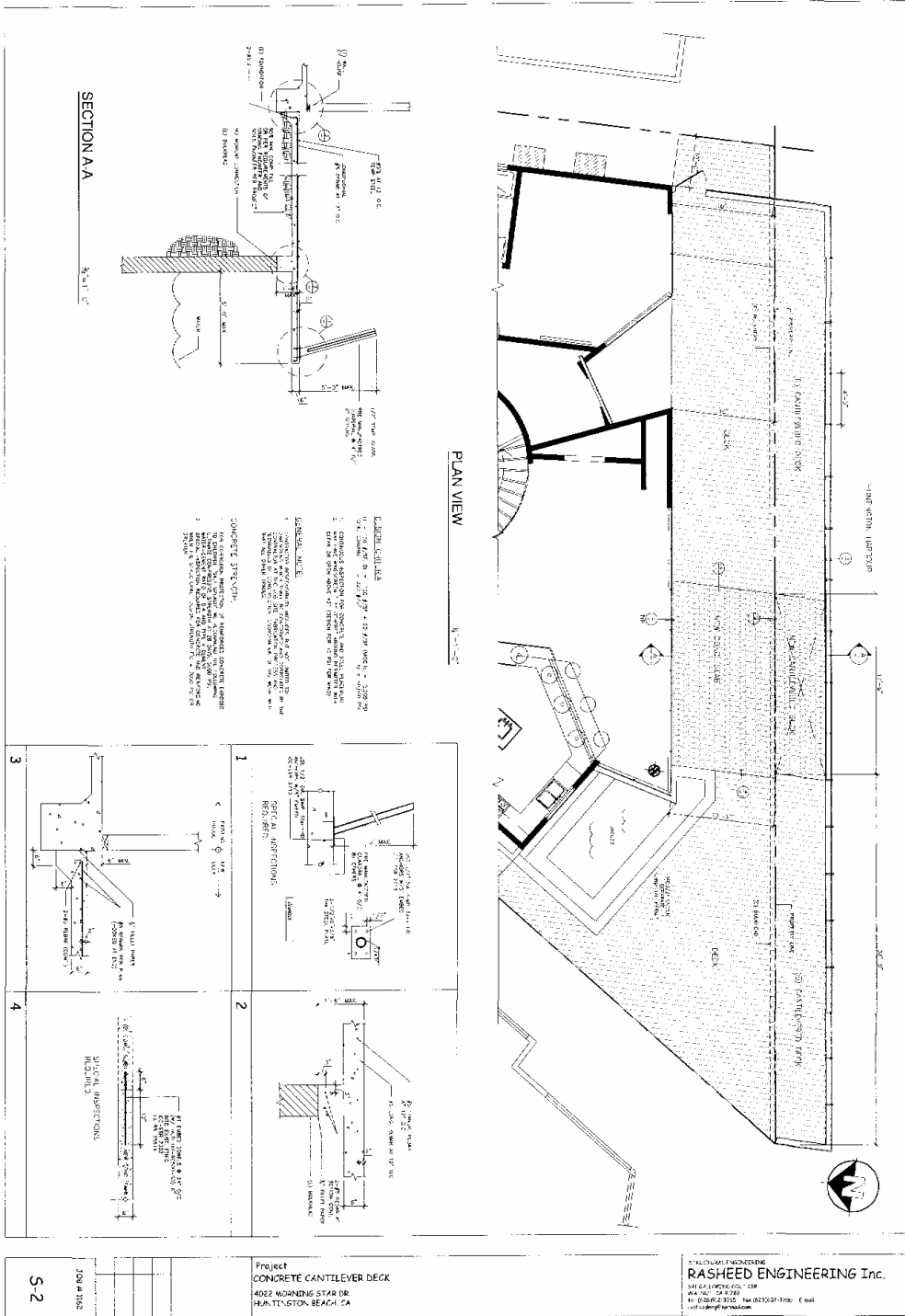
**ACKNOWLEDGMENT OF PERMIT RECEIPT/ACCEPTANCE OF CONTENTS:**

I/We acknowledge that I/we have received a copy of this permit and have accepted its contents including all conditions.

\_\_\_\_\_  
Applicants' Signature

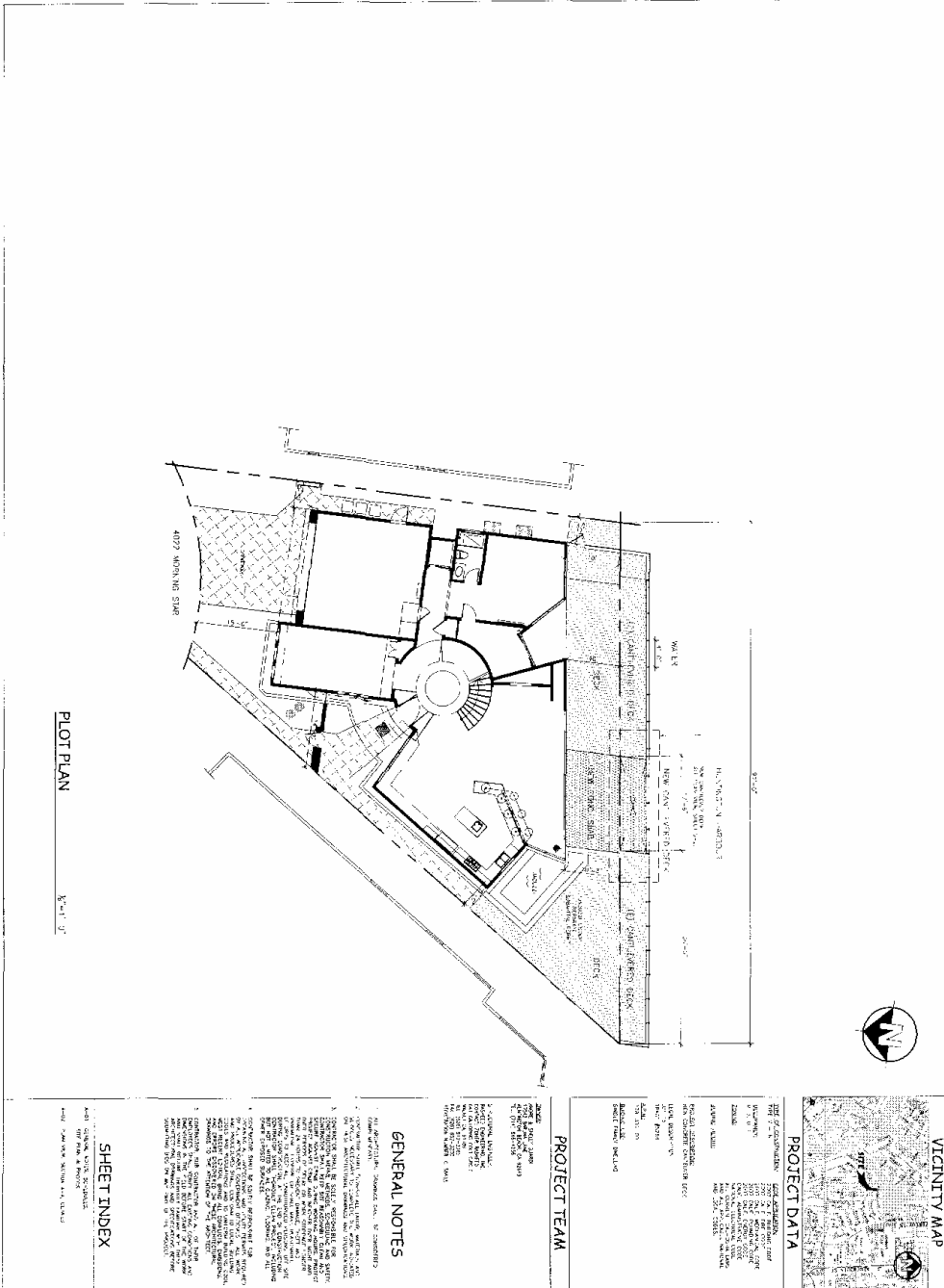
\_\_\_\_\_  
Date of Signing





*Handwritten note:* concrete cantilever deck

*Handwritten notes at the bottom of the page:*  
 5-09-060 Proj. of Plans  
 2/28/11



PLOT PLAN  
 1/8" = 1' - 0"



PROJECT DATA

DATE OF SUBMITTAL: 05/09/2006  
 PROJECT NO.: 060  
 SHEET NO.: S-1  
 PROJECT NAME: CONCRETE CANTILEVER DECK  
 CLIENT: YOUNESSI  
 ARCHITECT: RASHEED ENGINEERING INC.  
 1401 S. GARDEN ST. #100  
 ANAHEIM, CA 92805  
 TEL: 714.944.1111  
 FAX: 714.944.1112  
 WWW: WWW.RASHEEDENGINEERING.COM

PROJECT TEAM

ARCHITECT: RASHEED ENGINEERING INC.  
 PROJECT MANAGER: RASHEED ENGINEERING INC.  
 PROJECT ENGINEER: RASHEED ENGINEERING INC.  
 PROJECT ARCHITECT: RASHEED ENGINEERING INC.  
 PROJECT DESIGNER: RASHEED ENGINEERING INC.  
 PROJECT CHECKER: RASHEED ENGINEERING INC.  
 PROJECT DATE: 05/09/2006

GENERAL NOTES

1. ALL CONSTRUCTION SHALL BE IN ACCORDANCE WITH THE LATEST EDITIONS OF THE CALIFORNIA BUILDING CODES AND ALL APPLICABLE ORDINANCES.  
 2. ALL DIMENSIONS SHALL BE UNLESS OTHERWISE NOTED.  
 3. ALL WALLS SHALL BE 12" THICK UNLESS OTHERWISE NOTED.  
 4. ALL FLOORS SHALL BE 4" THICK UNLESS OTHERWISE NOTED.  
 5. ALL ROOFS SHALL BE 4" THICK UNLESS OTHERWISE NOTED.  
 6. ALL STRUCTURAL ELEMENTS SHALL BE CONCRETE UNLESS OTHERWISE NOTED.  
 7. ALL REINFORCEMENT SHALL BE #4 UNLESS OTHERWISE NOTED.  
 8. ALL REINFORCEMENT SHALL BE SPACED AT 12" ON CENTER UNLESS OTHERWISE NOTED.  
 9. ALL REINFORCEMENT SHALL BE DEVELOPED AS SHOWN.  
 10. ALL REINFORCEMENT SHALL BE PROTECTED BY A MINIMUM OF 2" OF CONCRETE.  
 11. ALL REINFORCEMENT SHALL BE PROTECTED BY A MINIMUM OF 1" OF CONCRETE AT WALLS.  
 12. ALL REINFORCEMENT SHALL BE PROTECTED BY A MINIMUM OF 1" OF CONCRETE AT SLABS.  
 13. ALL REINFORCEMENT SHALL BE PROTECTED BY A MINIMUM OF 1" OF CONCRETE AT BEAMS.  
 14. ALL REINFORCEMENT SHALL BE PROTECTED BY A MINIMUM OF 1" OF CONCRETE AT CORNERS.  
 15. ALL REINFORCEMENT SHALL BE PROTECTED BY A MINIMUM OF 1" OF CONCRETE AT JOINTS.  
 16. ALL REINFORCEMENT SHALL BE PROTECTED BY A MINIMUM OF 1" OF CONCRETE AT OPENINGS.  
 17. ALL REINFORCEMENT SHALL BE PROTECTED BY A MINIMUM OF 1" OF CONCRETE AT STAIRS.  
 18. ALL REINFORCEMENT SHALL BE PROTECTED BY A MINIMUM OF 1" OF CONCRETE AT ELEVATORS.  
 19. ALL REINFORCEMENT SHALL BE PROTECTED BY A MINIMUM OF 1" OF CONCRETE AT RAMPWAYS.  
 20. ALL REINFORCEMENT SHALL BE PROTECTED BY A MINIMUM OF 1" OF CONCRETE AT MEZANINES.  
 21. ALL REINFORCEMENT SHALL BE PROTECTED BY A MINIMUM OF 1" OF CONCRETE AT TERRACES.  
 22. ALL REINFORCEMENT SHALL BE PROTECTED BY A MINIMUM OF 1" OF CONCRETE AT BALCONIES.  
 23. ALL REINFORCEMENT SHALL BE PROTECTED BY A MINIMUM OF 1" OF CONCRETE AT PERGOLAS.  
 24. ALL REINFORCEMENT SHALL BE PROTECTED BY A MINIMUM OF 1" OF CONCRETE AT PATIOS.  
 25. ALL REINFORCEMENT SHALL BE PROTECTED BY A MINIMUM OF 1" OF CONCRETE AT PORCHES.  
 26. ALL REINFORCEMENT SHALL BE PROTECTED BY A MINIMUM OF 1" OF CONCRETE AT DECKS.  
 27. ALL REINFORCEMENT SHALL BE PROTECTED BY A MINIMUM OF 1" OF CONCRETE AT STAIRS.  
 28. ALL REINFORCEMENT SHALL BE PROTECTED BY A MINIMUM OF 1" OF CONCRETE AT ELEVATORS.  
 29. ALL REINFORCEMENT SHALL BE PROTECTED BY A MINIMUM OF 1" OF CONCRETE AT RAMPWAYS.  
 30. ALL REINFORCEMENT SHALL BE PROTECTED BY A MINIMUM OF 1" OF CONCRETE AT MEZANINES.  
 31. ALL REINFORCEMENT SHALL BE PROTECTED BY A MINIMUM OF 1" OF CONCRETE AT TERRACES.  
 32. ALL REINFORCEMENT SHALL BE PROTECTED BY A MINIMUM OF 1" OF CONCRETE AT BALCONIES.  
 33. ALL REINFORCEMENT SHALL BE PROTECTED BY A MINIMUM OF 1" OF CONCRETE AT PERGOLAS.  
 34. ALL REINFORCEMENT SHALL BE PROTECTED BY A MINIMUM OF 1" OF CONCRETE AT PATIOS.  
 35. ALL REINFORCEMENT SHALL BE PROTECTED BY A MINIMUM OF 1" OF CONCRETE AT PORCHES.  
 36. ALL REINFORCEMENT SHALL BE PROTECTED BY A MINIMUM OF 1" OF CONCRETE AT DECKS.

SHEET INDEX

NO. DESCRIPTION  
 1. CONCRETE CANTILEVER DECK  
 2. CONCRETE CANTILEVER DECK  
 3. CONCRETE CANTILEVER DECK  
 4. CONCRETE CANTILEVER DECK  
 5. CONCRETE CANTILEVER DECK  
 6. CONCRETE CANTILEVER DECK  
 7. CONCRETE CANTILEVER DECK  
 8. CONCRETE CANTILEVER DECK  
 9. CONCRETE CANTILEVER DECK  
 10. CONCRETE CANTILEVER DECK  
 11. CONCRETE CANTILEVER DECK  
 12. CONCRETE CANTILEVER DECK  
 13. CONCRETE CANTILEVER DECK  
 14. CONCRETE CANTILEVER DECK  
 15. CONCRETE CANTILEVER DECK  
 16. CONCRETE CANTILEVER DECK  
 17. CONCRETE CANTILEVER DECK  
 18. CONCRETE CANTILEVER DECK  
 19. CONCRETE CANTILEVER DECK  
 20. CONCRETE CANTILEVER DECK  
 21. CONCRETE CANTILEVER DECK  
 22. CONCRETE CANTILEVER DECK  
 23. CONCRETE CANTILEVER DECK  
 24. CONCRETE CANTILEVER DECK  
 25. CONCRETE CANTILEVER DECK  
 26. CONCRETE CANTILEVER DECK  
 27. CONCRETE CANTILEVER DECK  
 28. CONCRETE CANTILEVER DECK  
 29. CONCRETE CANTILEVER DECK  
 30. CONCRETE CANTILEVER DECK  
 31. CONCRETE CANTILEVER DECK  
 32. CONCRETE CANTILEVER DECK  
 33. CONCRETE CANTILEVER DECK  
 34. CONCRETE CANTILEVER DECK  
 35. CONCRETE CANTILEVER DECK  
 36. CONCRETE CANTILEVER DECK  
 37. CONCRETE CANTILEVER DECK  
 38. CONCRETE CANTILEVER DECK  
 39. CONCRETE CANTILEVER DECK  
 40. CONCRETE CANTILEVER DECK  
 41. CONCRETE CANTILEVER DECK  
 42. CONCRETE CANTILEVER DECK  
 43. CONCRETE CANTILEVER DECK  
 44. CONCRETE CANTILEVER DECK  
 45. CONCRETE CANTILEVER DECK  
 46. CONCRETE CANTILEVER DECK  
 47. CONCRETE CANTILEVER DECK  
 48. CONCRETE CANTILEVER DECK  
 49. CONCRETE CANTILEVER DECK  
 50. CONCRETE CANTILEVER DECK  
 51. CONCRETE CANTILEVER DECK  
 52. CONCRETE CANTILEVER DECK  
 53. CONCRETE CANTILEVER DECK  
 54. CONCRETE CANTILEVER DECK  
 55. CONCRETE CANTILEVER DECK  
 56. CONCRETE CANTILEVER DECK  
 57. CONCRETE CANTILEVER DECK  
 58. CONCRETE CANTILEVER DECK  
 59. CONCRETE CANTILEVER DECK  
 60. CONCRETE CANTILEVER DECK  
 61. CONCRETE CANTILEVER DECK  
 62. CONCRETE CANTILEVER DECK  
 63. CONCRETE CANTILEVER DECK  
 64. CONCRETE CANTILEVER DECK  
 65. CONCRETE CANTILEVER DECK  
 66. CONCRETE CANTILEVER DECK  
 67. CONCRETE CANTILEVER DECK  
 68. CONCRETE CANTILEVER DECK  
 69. CONCRETE CANTILEVER DECK  
 70. CONCRETE CANTILEVER DECK  
 71. CONCRETE CANTILEVER DECK  
 72. CONCRETE CANTILEVER DECK  
 73. CONCRETE CANTILEVER DECK  
 74. CONCRETE CANTILEVER DECK  
 75. CONCRETE CANTILEVER DECK  
 76. CONCRETE CANTILEVER DECK  
 77. CONCRETE CANTILEVER DECK  
 78. CONCRETE CANTILEVER DECK  
 79. CONCRETE CANTILEVER DECK  
 80. CONCRETE CANTILEVER DECK  
 81. CONCRETE CANTILEVER DECK  
 82. CONCRETE CANTILEVER DECK  
 83. CONCRETE CANTILEVER DECK  
 84. CONCRETE CANTILEVER DECK  
 85. CONCRETE CANTILEVER DECK  
 86. CONCRETE CANTILEVER DECK  
 87. CONCRETE CANTILEVER DECK  
 88. CONCRETE CANTILEVER DECK  
 89. CONCRETE CANTILEVER DECK  
 90. CONCRETE CANTILEVER DECK  
 91. CONCRETE CANTILEVER DECK  
 92. CONCRETE CANTILEVER DECK  
 93. CONCRETE CANTILEVER DECK  
 94. CONCRETE CANTILEVER DECK  
 95. CONCRETE CANTILEVER DECK  
 96. CONCRETE CANTILEVER DECK  
 97. CONCRETE CANTILEVER DECK  
 98. CONCRETE CANTILEVER DECK  
 99. CONCRETE CANTILEVER DECK  
 100. CONCRETE CANTILEVER DECK

S-1

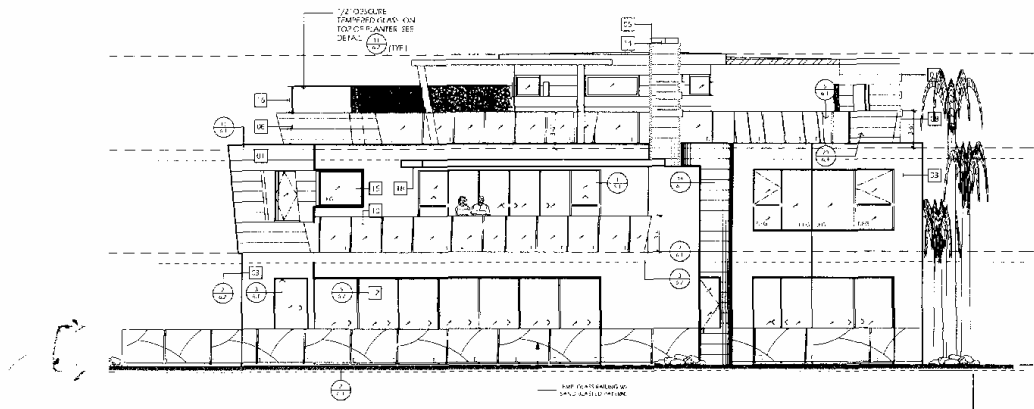
Project  
 CONCRETE CANTILEVER DECK  
 4022 MORNING STAR DR  
 ANAHEIM BEACH, CA

REGISTERED PROFESSIONAL ENGINEER  
**RASHEED ENGINEERING Inc.**  
 1401 S. GARDEN ST. #100  
 ANAHEIM, CA 92805  
 TEL: 714.944.1111 FAX: 714.944.1112  
 WWW: WWW.RASHEEDENGINEERING.COM

5-09-060

Expanded to  
 10/10/06





1

REAR ELEVATION

3/32" = 1'-0"

*Handwritten note:* added glass panels

COASTAL COMMISSION

EXHIBIT #                     

PAGE   1   OF   1