

Morleigh Properties, LLLP  
APN: 4453-005-091

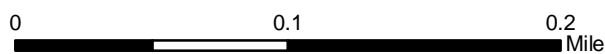
Ronan Properties, LLLP  
APN: 4453-005-038

Lunch Properties, LLLP  
APN: 4453-005-037

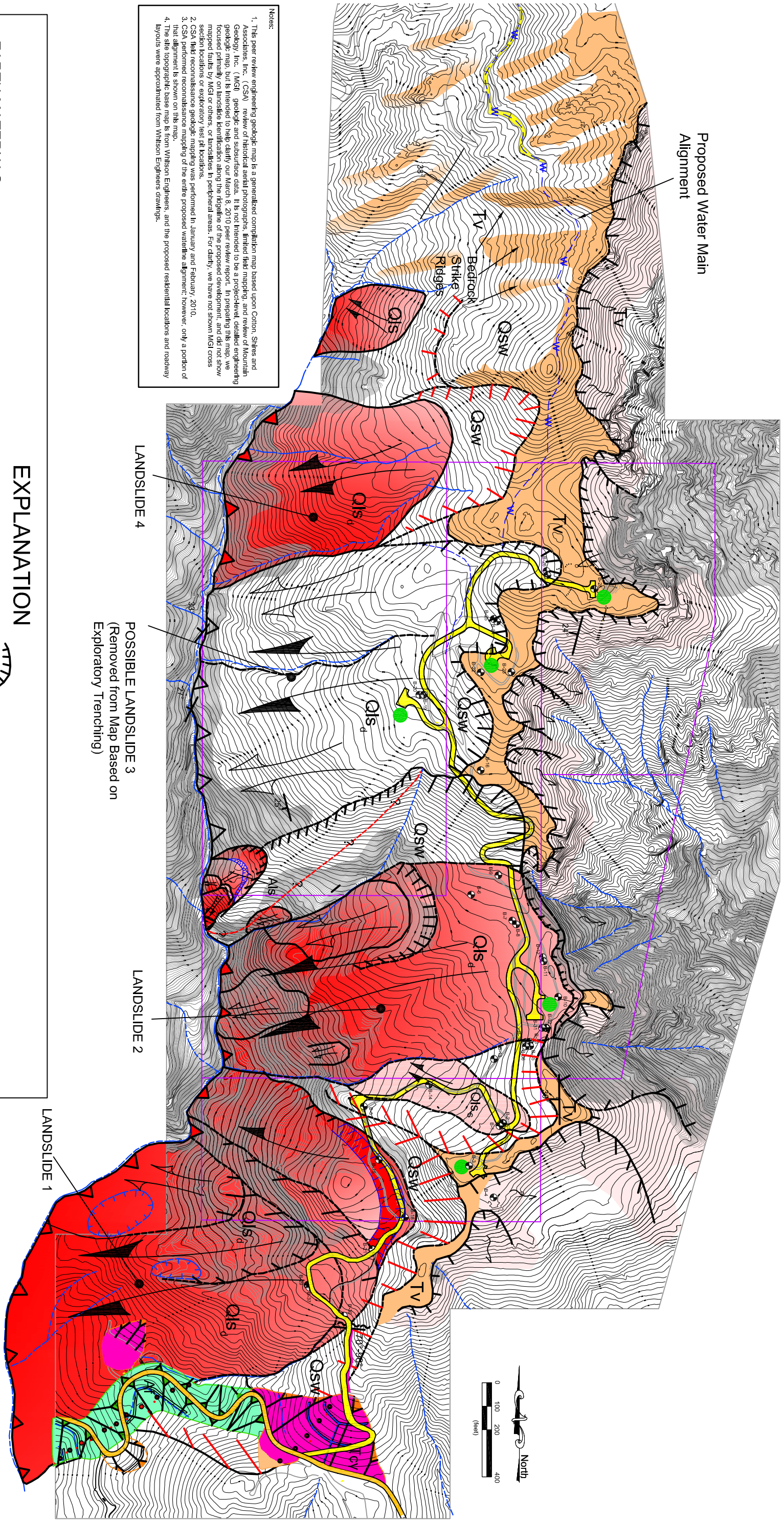
Historic Mesa Area  
Approx. 3 acres

Mulryan Properties, LLLP  
APN: 4453-005-092

Vera Properties, LLLP  
APN: 4453-005-018



Proposed Water Main Alignment



Notes:

1. This peer review engineering geologic map is a generalized compilation map based upon Cotton, Shires and Associates, Inc. (CSA) review of historical aerial photographs, limited field mapping, and review of Mountain Geology, Inc. (MGI) geologic and subsurface data. It is not intended to be a project-level, detailed engineering geologic map, but is intended to help clarify our March 8, 2010 peer review report. In preparing this map, we focused primarily on landslide identification along the rightline of the proposed development, and did not show mapped faults by MGI or others, or landslides in peripheral areas. For clarity, we have not shown MGI cross section locations or exploratory test pit locations.
2. CSA field reconnaissance geologic mapping was performed in January and February, 2010.
3. CSA performed reconnaissance mapping of the entire proposed waterline alignment; however, only a portion of that alignment is shown on this map.
4. The site topographic base map is from Whitson Engineers, and the proposed residential locations and roadway layouts were approximated from Whitson Engineers drawings.

**EARTH MATERIALS**

- AF** Artificial Fill
- QSW** Slopewash
- Landslide Debris
- Als: Active Landslide
- Qls: Shallow Landslide
- Qls: Deep Landslide
- Conejo Volcanics
- Vaqueros Formation

**MAP SYMBOLS**

- Existing Paved Road
- Existing Dirt Trail
- Proposed Road
- Property Boundary
- Drainage
- Fill Slope

**EXPLANATION**

- Cut Slope
- Possible Landslide Feature (Removed from Map Based on Exploratory Trenching)
- Proposed Water Main Alignment
- Proposed Home Site
- Strike And Dip of Sedimentary Bedrock
- Fault/Shear Orientation
- Exploratory Borings By Mountain Geology, Inc., 2006 and 2007
- Escarpment, Sharp Break in Slope
- Graben
- Headscarp
- Landslide Debris
- Landslide Toe

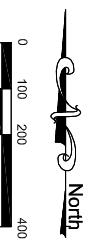
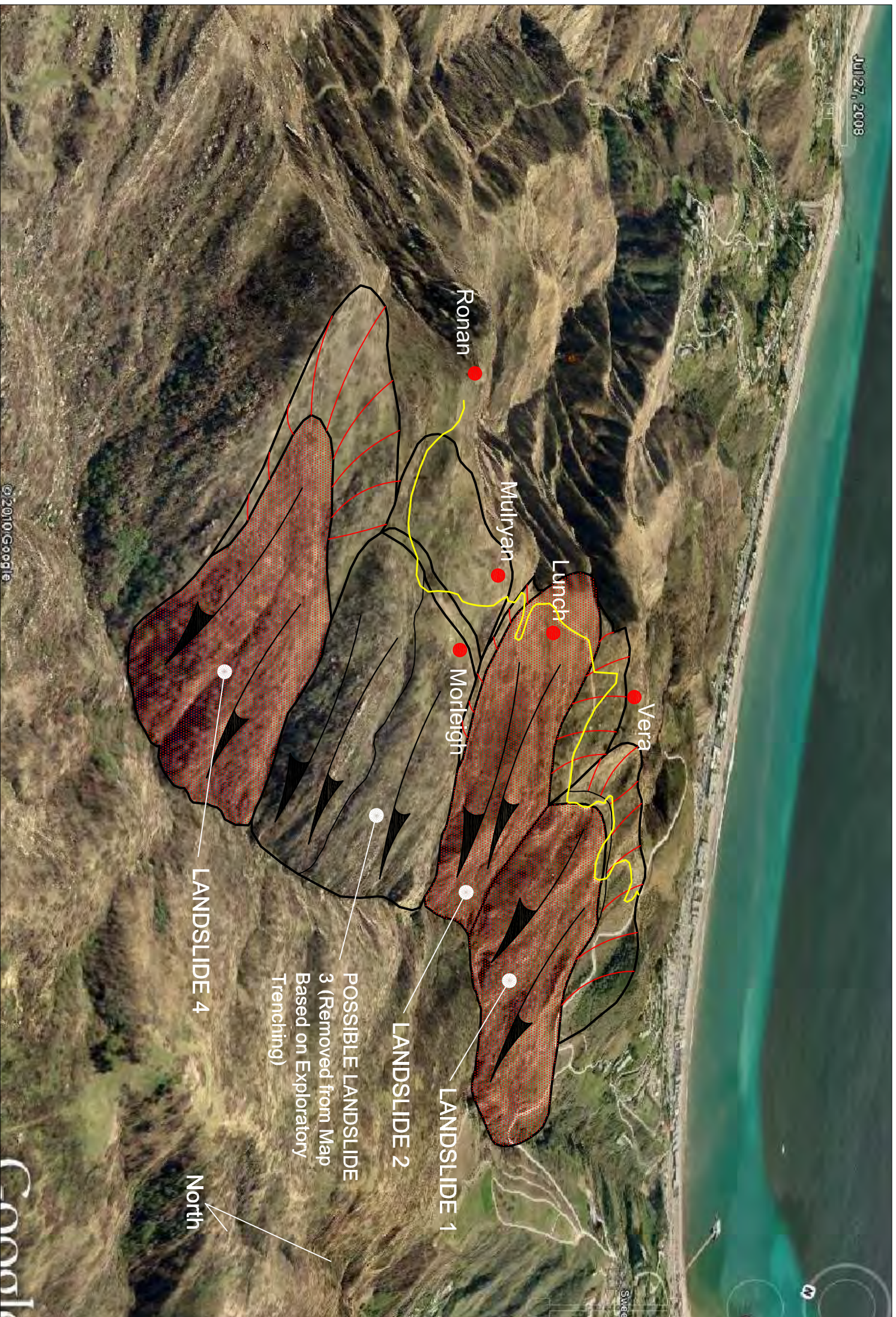


Exhibit 4  
CDP 4-10-040 through 4-10-045  
Site Geology/Landslide Areas

**COTTON, SHIRES AND ASSOCIATES, INC.**  
CONSULTING ENGINEERS AND GEOLOGISTS



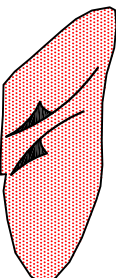
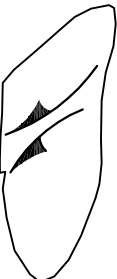
**PEER REVIEW ENGINEERING GEOLOGIC MAP**  
Sweetwater Mesa Development Project  
Malibu, California

GEO/ENG BY JW/POS	SCALE 1"=200'	PROJECT NO. E5050
APPROVED BY JW/POS	DATE JANUARY 2011	PLATE NO. 1



Base Photo Source: Google Earth Professional 2008

## EXPLANATION

<p>● Proposed Residential Site (approx.)</p> <p>Proposed Access Road (approx.)</p>	 	 	<p>CSA Aerial Photo Landslide Limits</p> <p>CSA Aerial Photo Landslide Limits (Removed from Map Based on Exploratory Trenching)</p>
--	---	---	---

LANDSLIDE 4

LANDSLIDE 2

LANDSLIDE 1

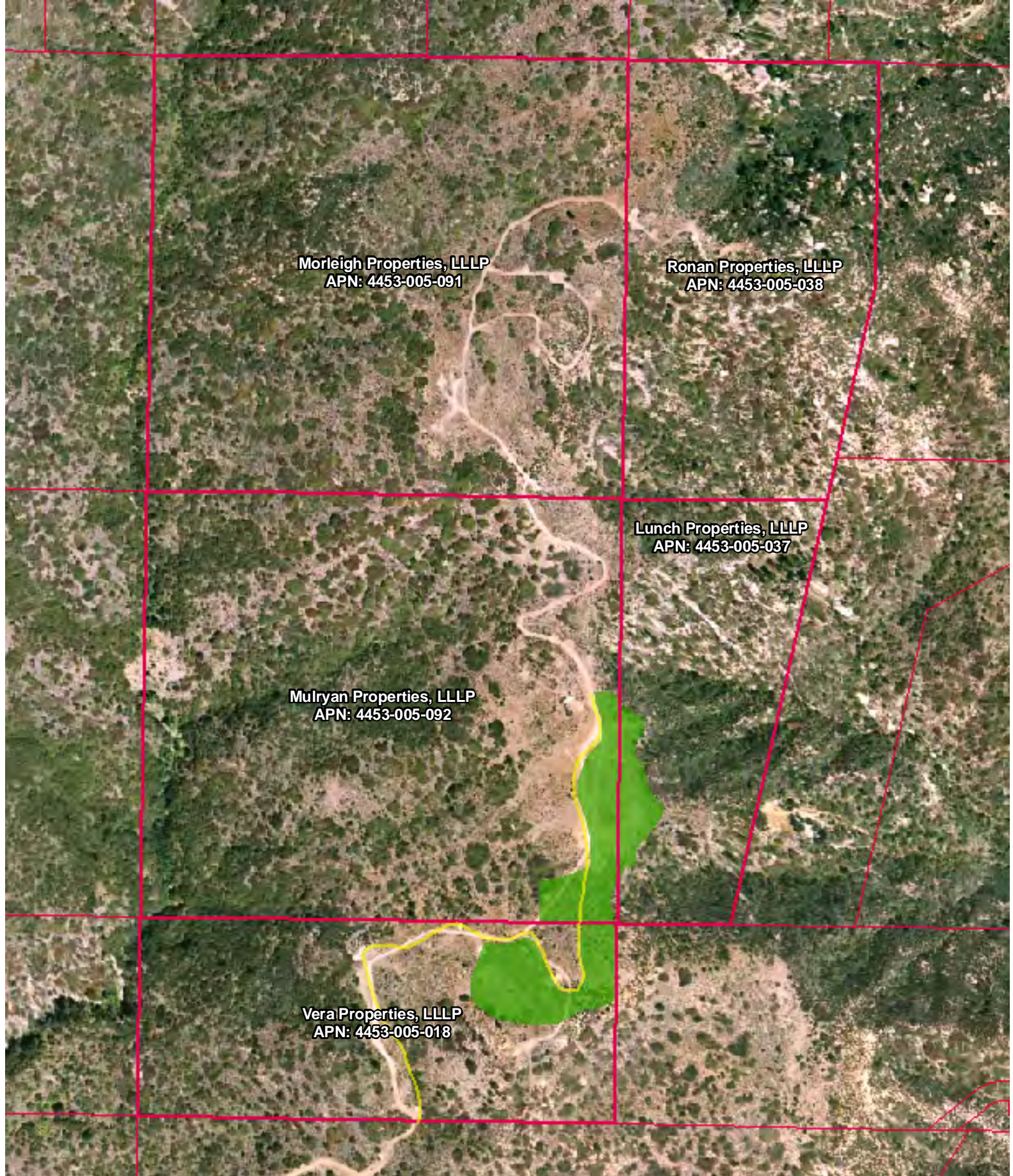
POSSIBLE LANDSLIDE 3 (Removed from Map Based on Exploratory Trenching)

North

 **COTTON, SHIRES AND ASSOCIATES, INC.**  
CONSULTING ENGINEERS AND GEOLOGISTS

**CSA PHOTO-INTERPRETIVE LANDSLIDES**  
**Sweetwater Mesa Development Project**  
Malibu, California

GEO/ENG BY <b>JW</b>	SCALE <b>NA</b>	PROJECT NO. <b>E5050</b>
APPROVED BY <b>JW/POS</b>	DATE <b>JANUARY 2011</b>	FIGURE NO. <b>2</b>



**Morleigh Properties, LLLP**  
APN: 4453-005-091

**Ronan Properties, LLLP**  
APN: 4453-005-038

**Lunch Properties, LLLP**  
APN: 4453-005-037

**Mulryan Properties, LLLP**  
APN: 4453-005-092

**Vera Properties, LLLP**  
APN: 4453-005-018

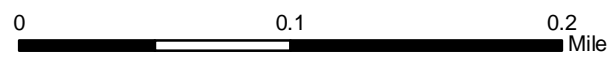


Exhibit 5  
CDP 4-10-040 through 4-10-045  
Residential Siting/Clustering  
Alternatives

All Locations Approximate.  
For Illustrative Purposes Only.  
Sources: AirPhotoUSA, County of L.A.