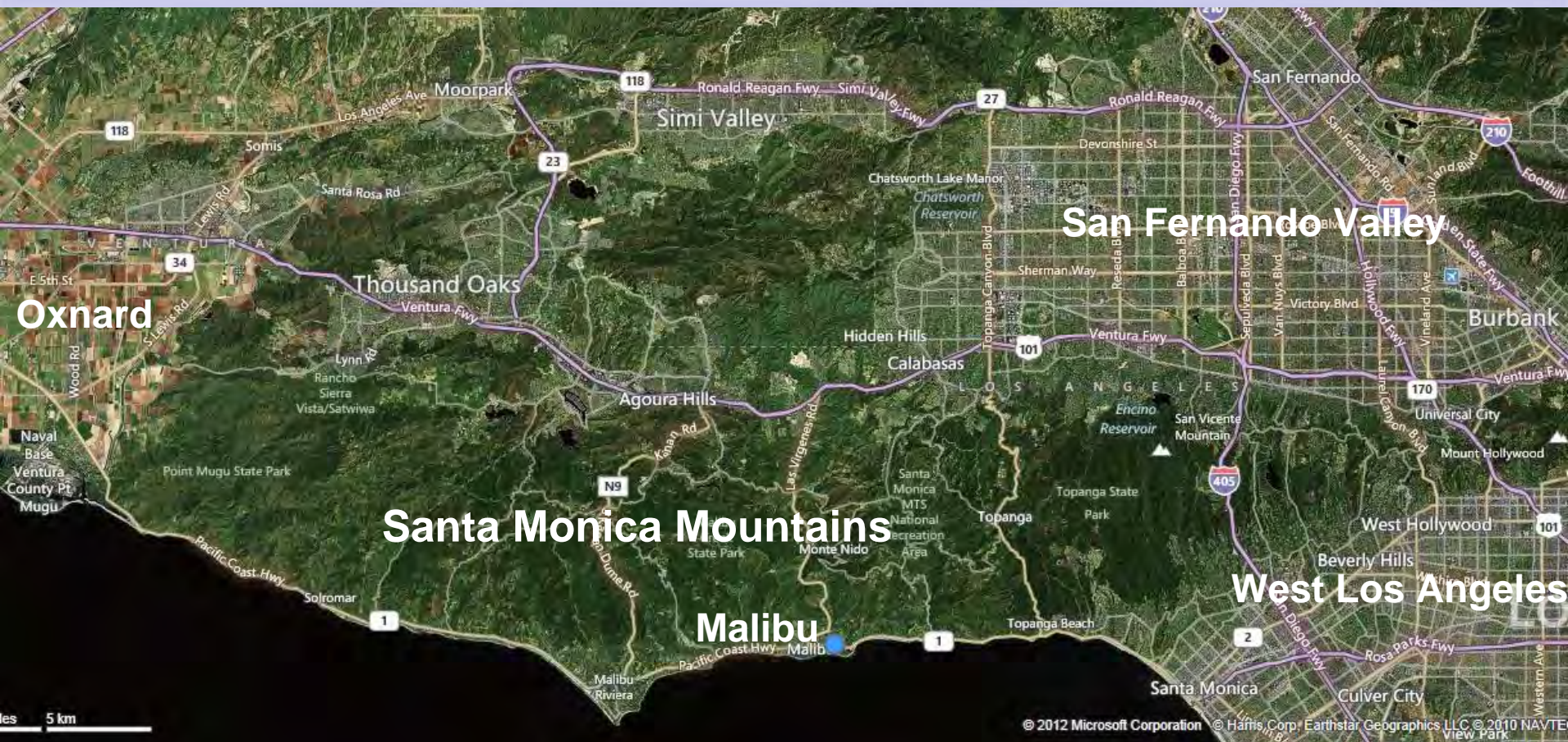
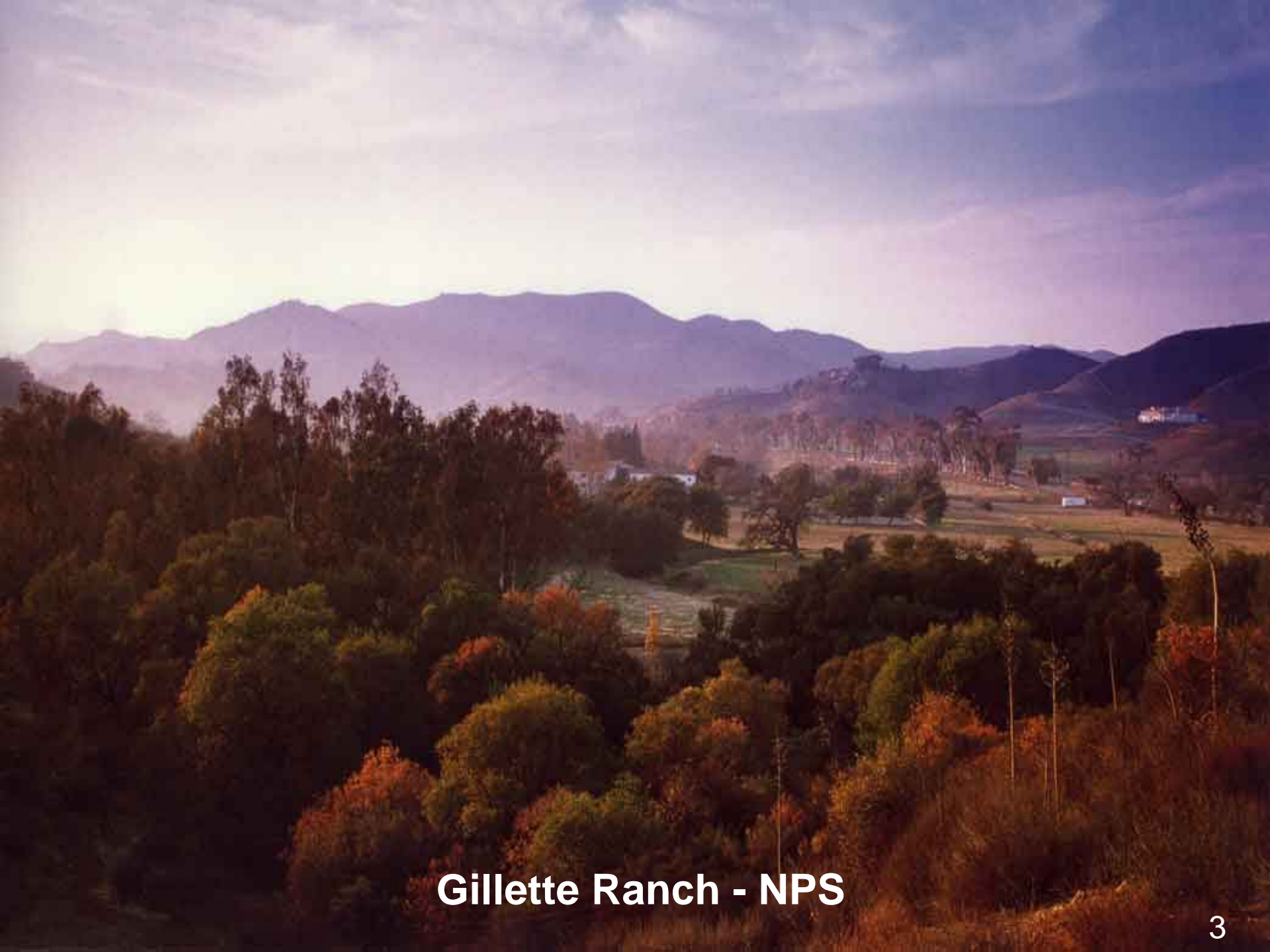


# **Coastal Commission - 40<sup>th</sup> Anniversary Retrospective**

***Malibu – Santa Monica Mountains  
Story***



# Vicinity Map



**Gillette Ranch - NPS**



**Boney Mountain – Savanna/Oak Woodland/ Chaparral**



## Cold Creek Riparian Corridor/Chaparral Habitat



© 2012 Microsoft Corporation Pictometry Bird's Eye

## Escondido Falls



Base of Escondido Falls



Coast Live Oak Woodland

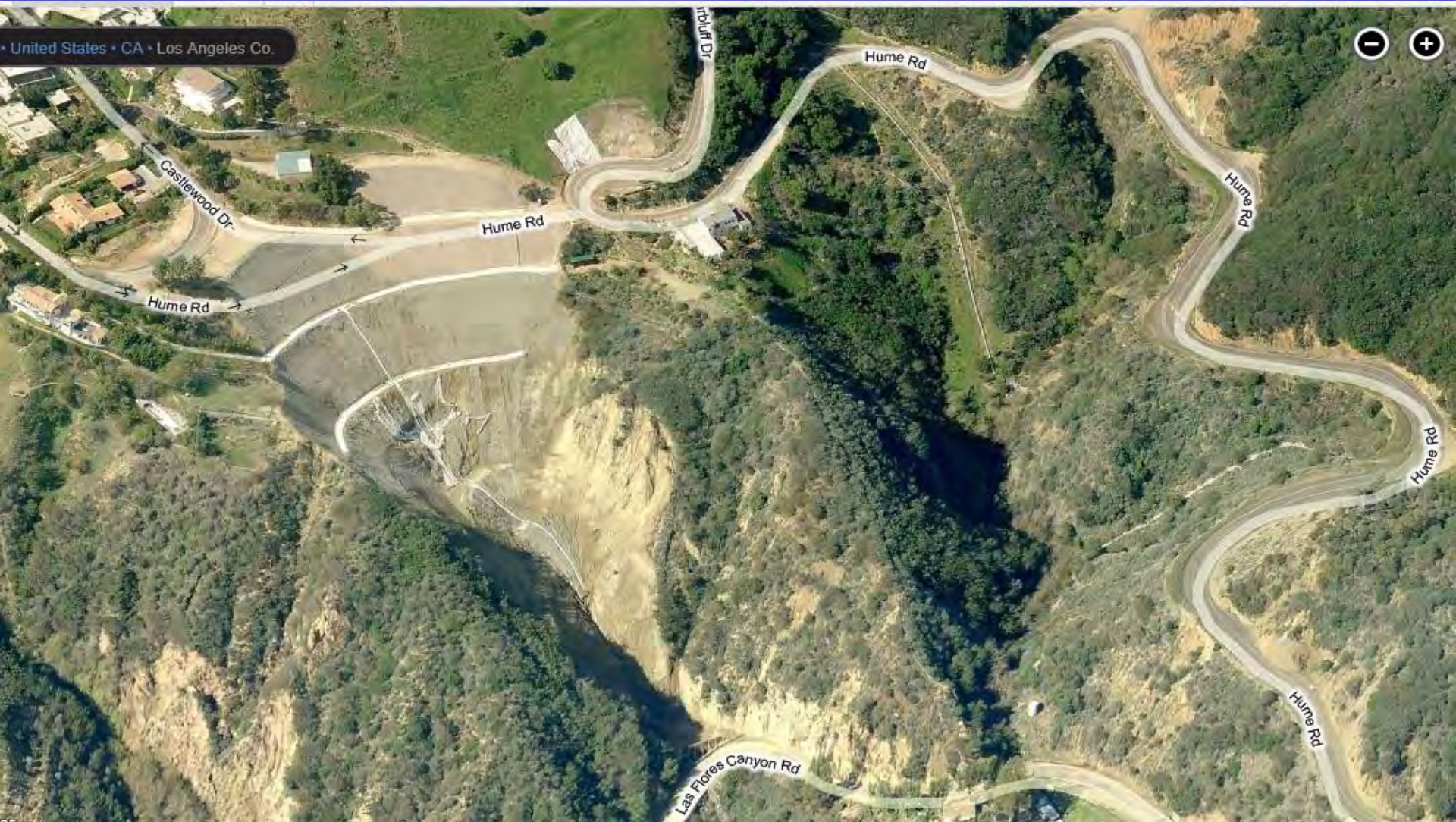




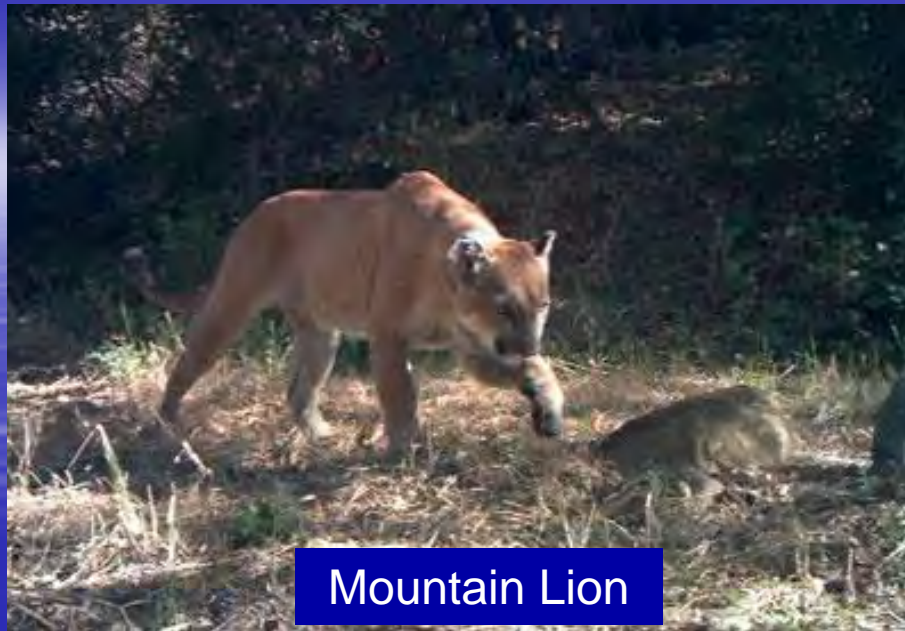
**Wildfire Near Pepperdine University**



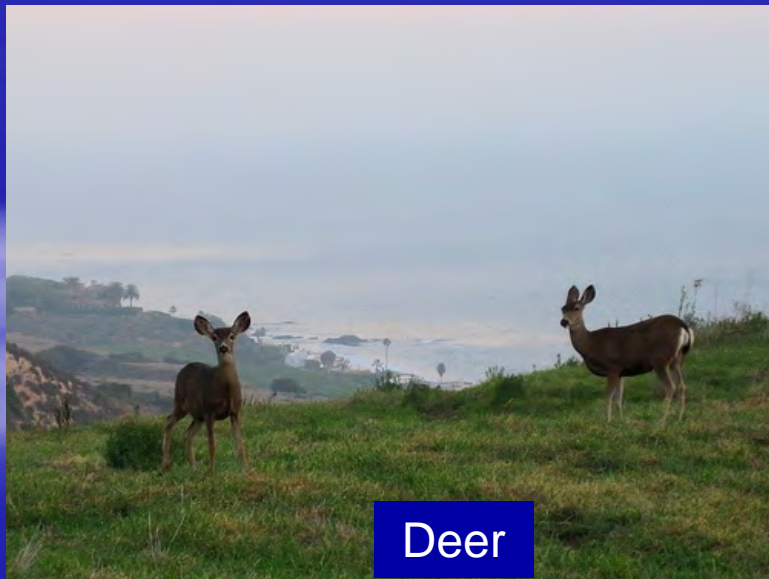
## Rambla Pacifico Landslide - Malibu



## LA County Landslide Repair - Hume Rd – Las Flores Canyon



Mountain Lion



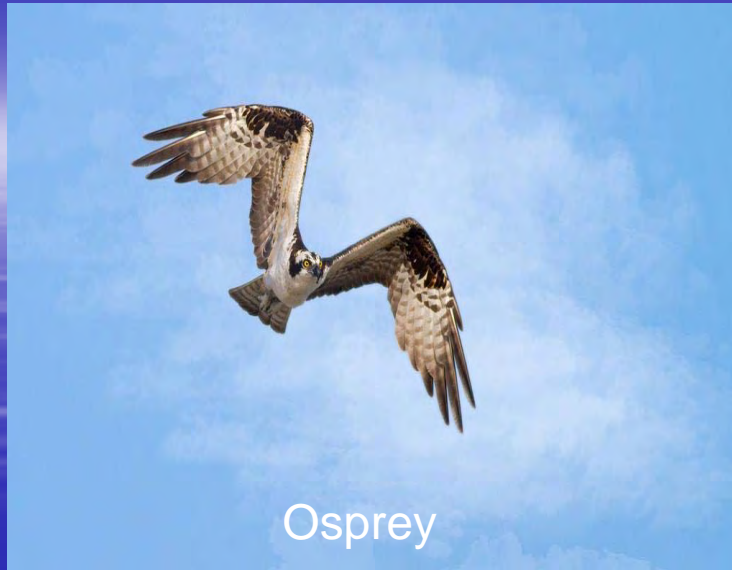
Deer



Bob Cat



Red Shouldered Hawk



Osprey



White Tail Kites



Loggerhead Shrike



Snowy Egret



Great Blue Heron



**Coast Horned Lizard**



**Tidewater Goby**



**Coast Range Newt**



**Southern Steelhead**



**Brauton's Rattleweed**



**Conejo Buckwheat**



**Lyon's Pentachaeta**



**Santa Monica Dudleya**



Malibu Beach 1926





**Dan Blocker Beach / Corral Beach**



**El Matador State Beach**

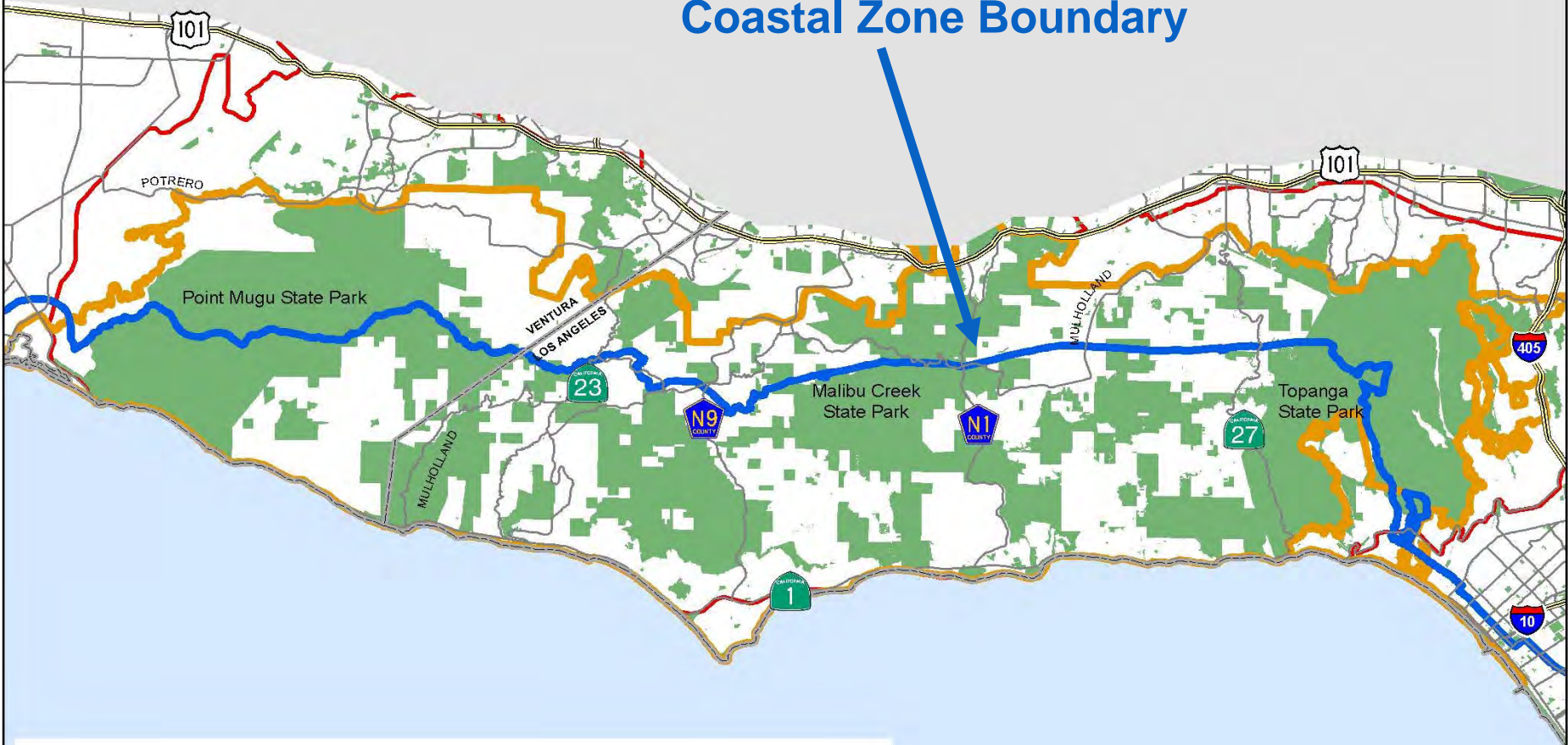


## Leo Carrillo State Beach



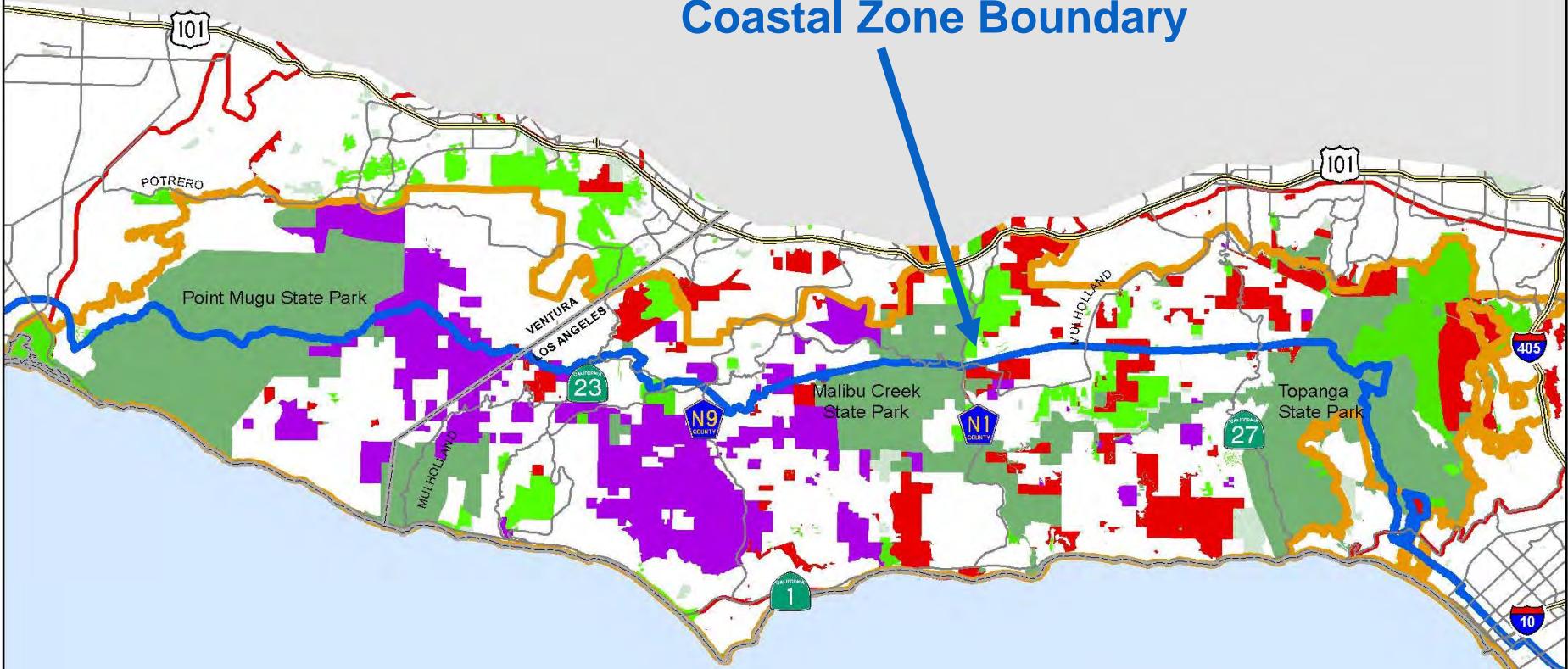
## Las Flores Beach - Malibu

# Coastal Zone Boundary



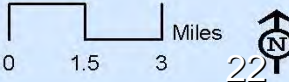
- Coastal Zone Boundary
- SMMNRA Boundary (NPS)
- Public Land
- Santa Monica Mountains Conservancy Zone

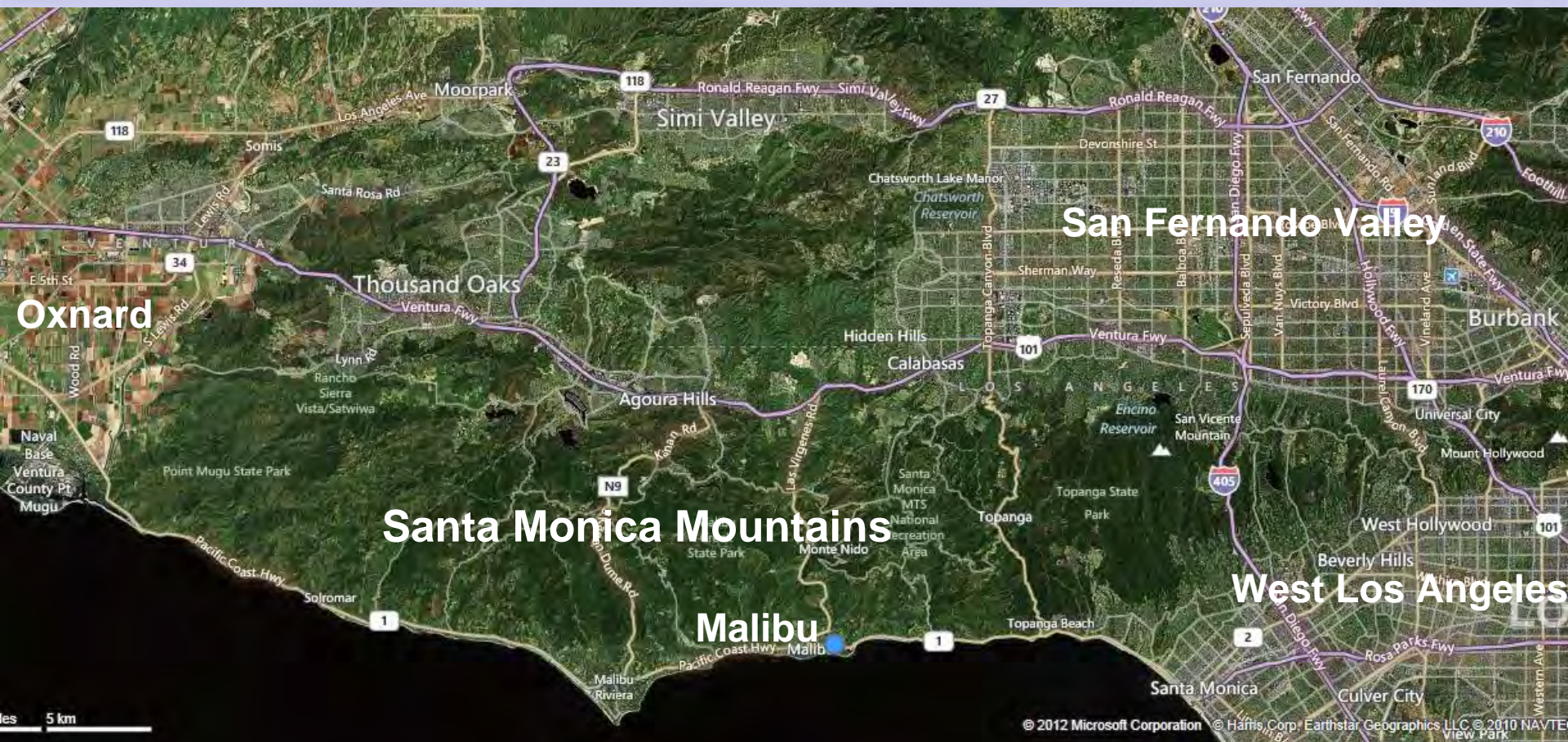
# Coastal Zone Boundary



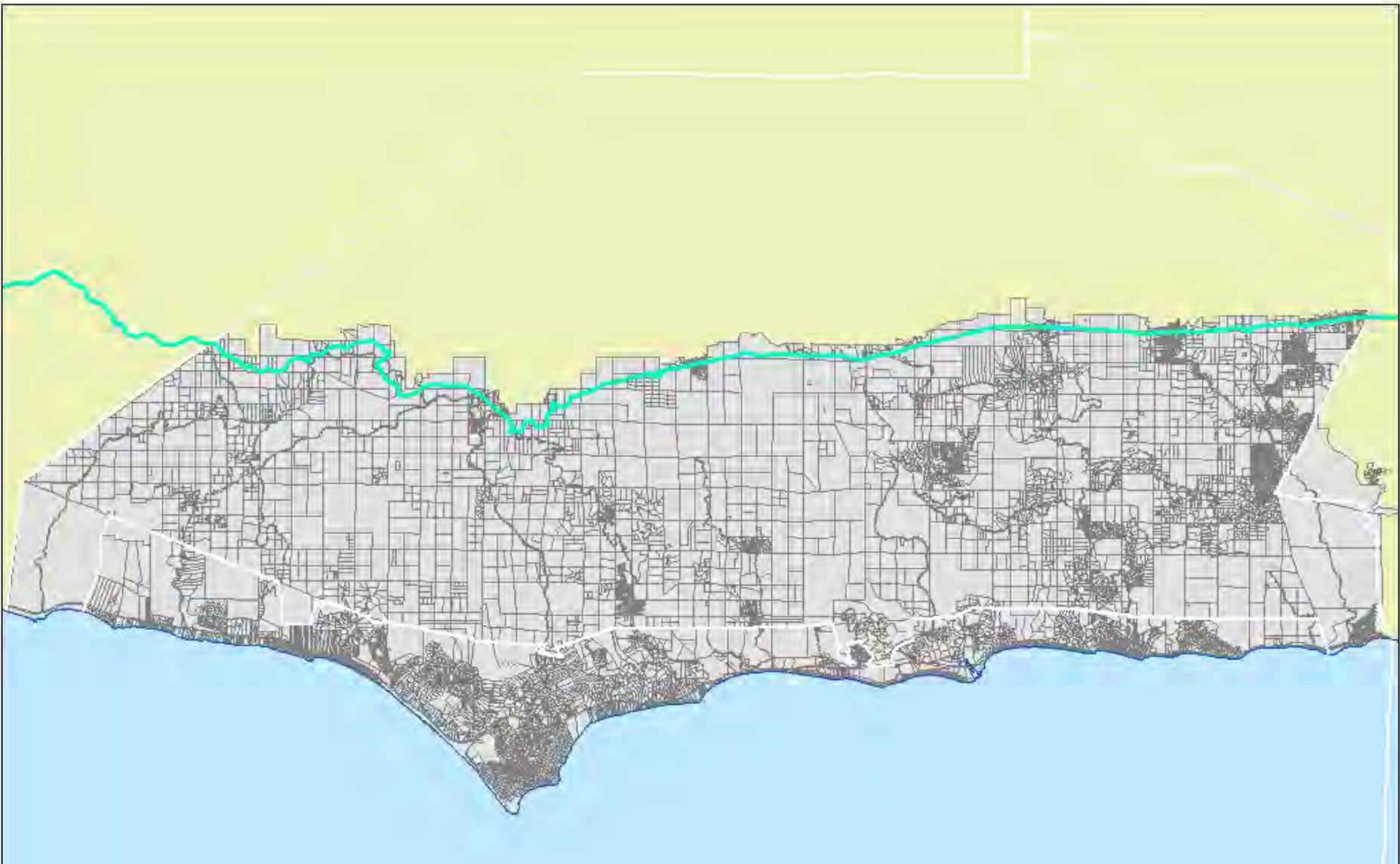
- Coastal Zone Boundary
- SMMNRA Boundary (NPS)
- Santa Monica Mountains Conservancy Zone

- NPS
- SMMC/MRCA
- Other Parkland
- STATE PARKS





# Vicinity Map

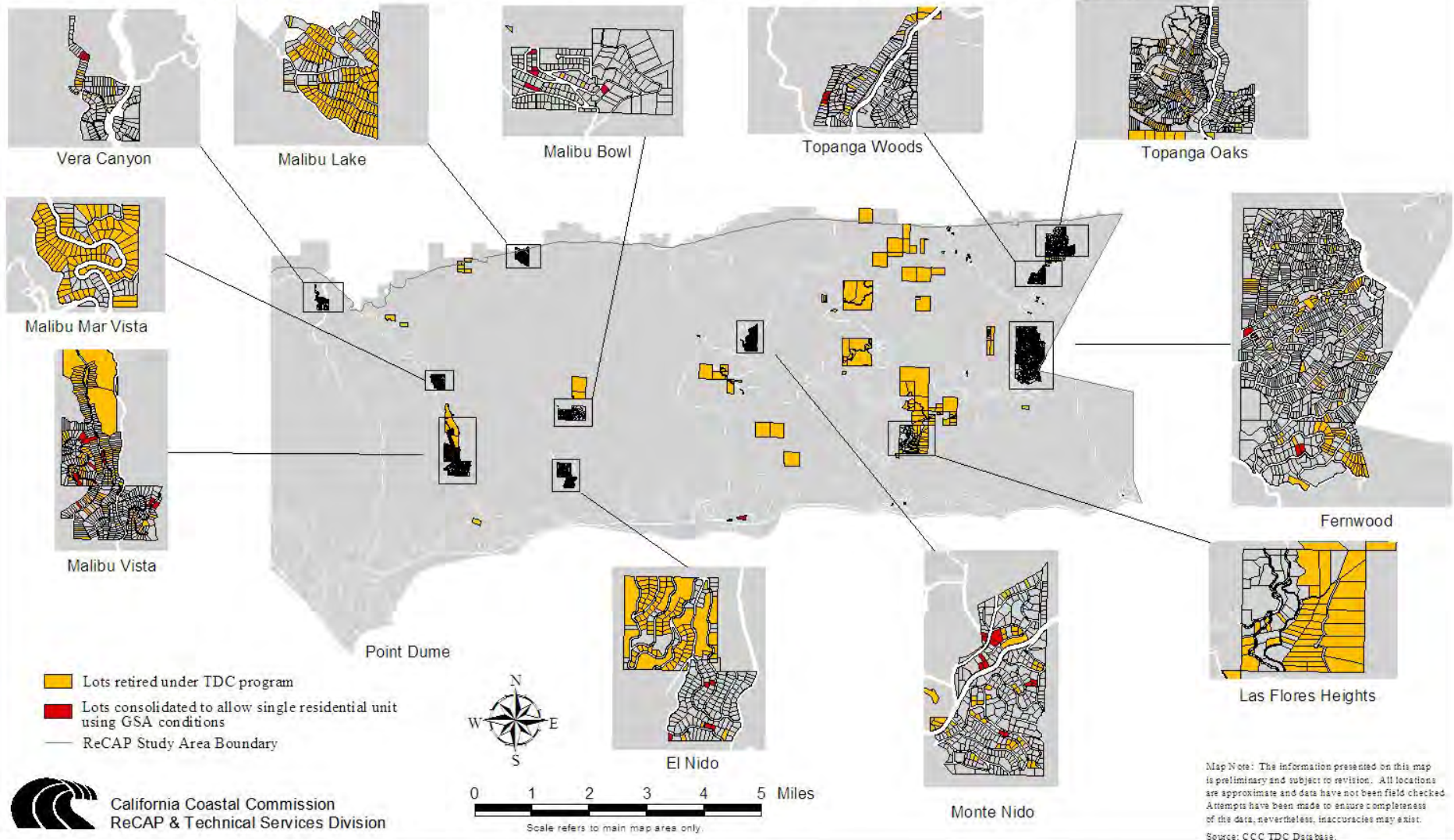


## Malibu/Santa Monica Mountains Parcels



Regional Cumulative Assessment Project:  
Santa Monica Mountains/Malibu Area  
1998

### Retired and GSA Lots in Small Lot Subdivisions in Los Angeles County and Malibu

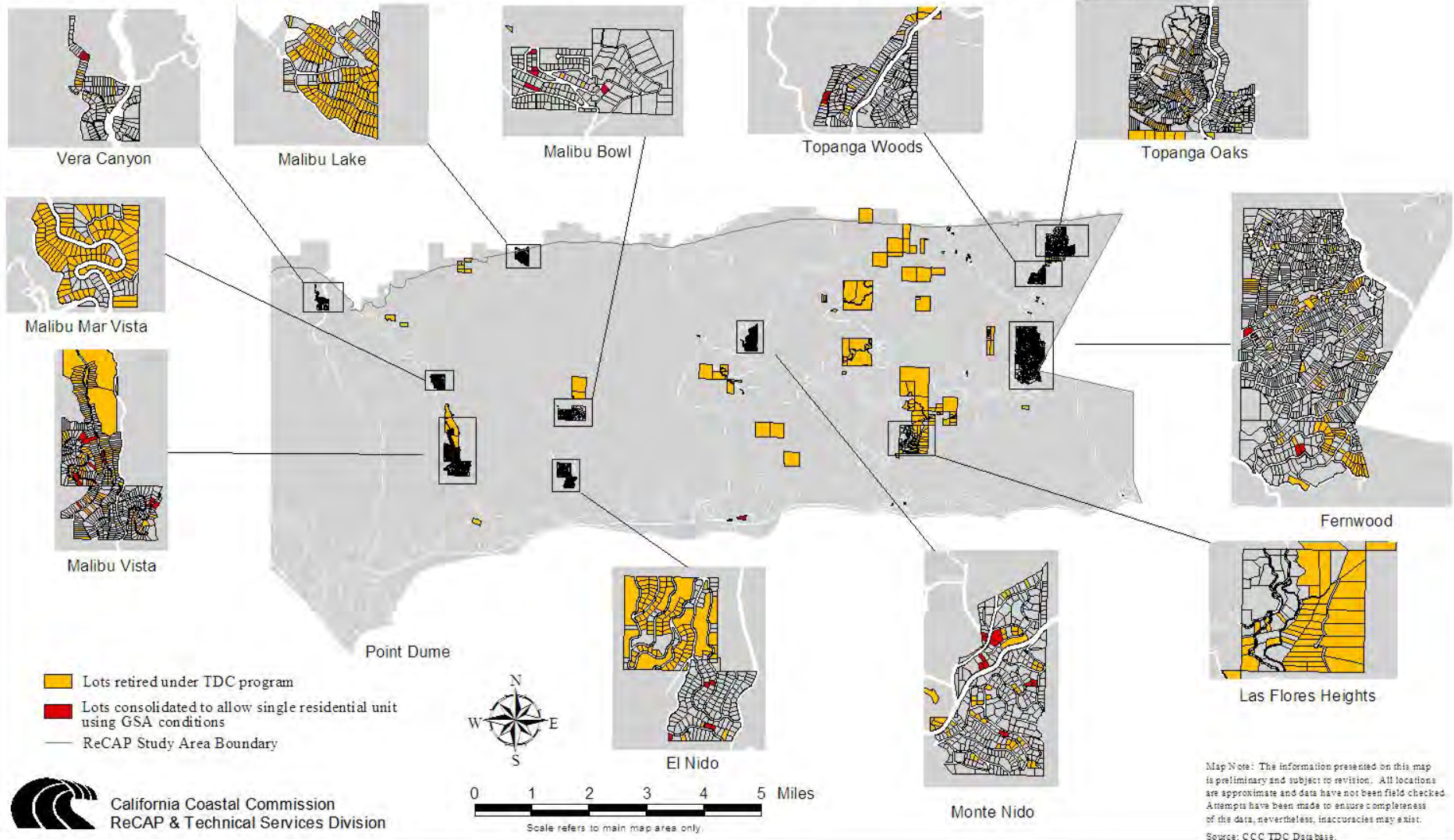




## Malibu Bowl Small Lot Subdivision

Regional Cumulative Assessment Project:  
Santa Monica Mountains/Malibu Area  
1998

### Retired and GSA Lots in Small Lot Subdivisions in Los Angeles County and Malibu



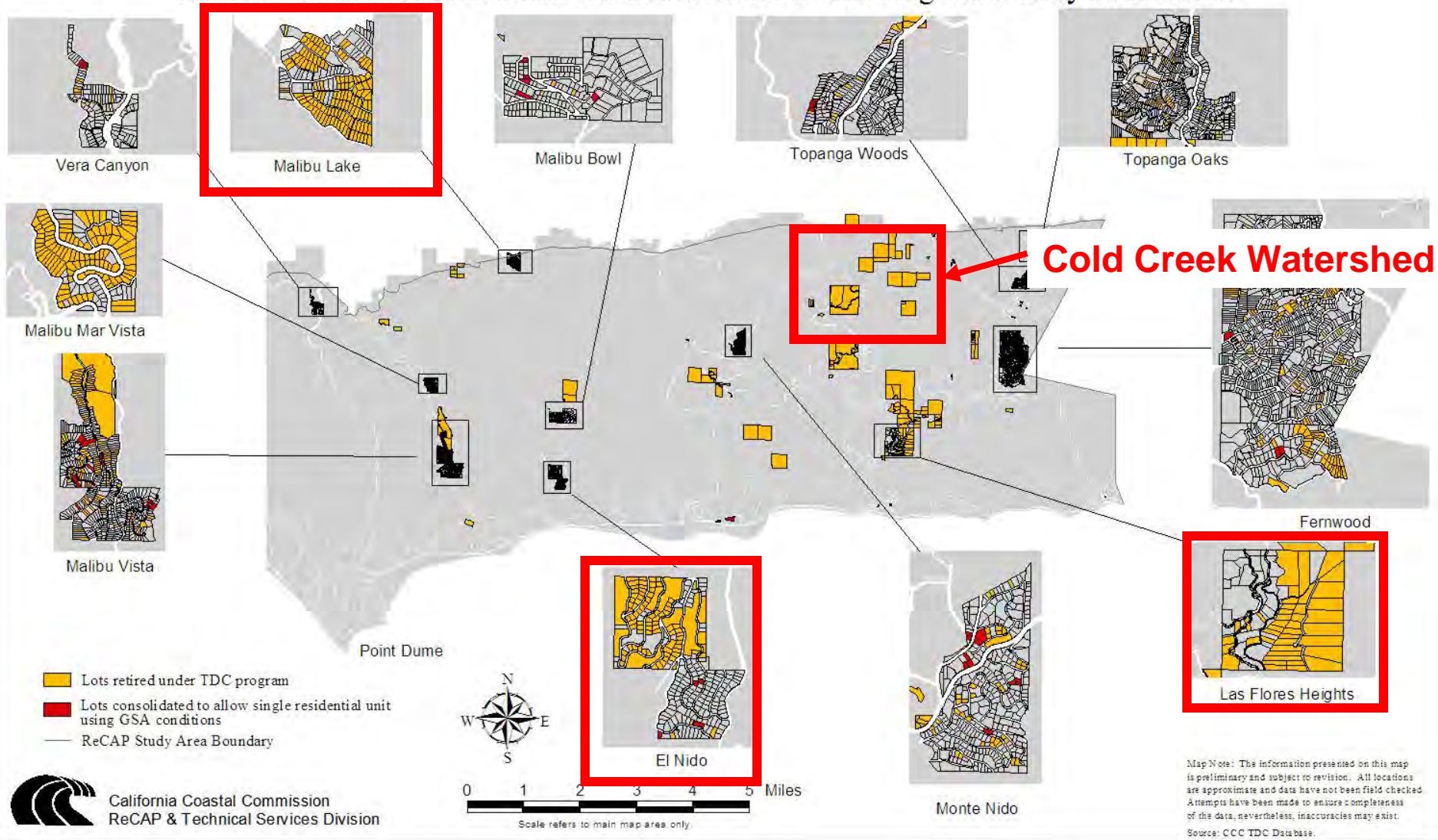
# TDC & GSA Parcels Retired from Development



 Parcels with TDCs, GSAs and Lot Recombinations

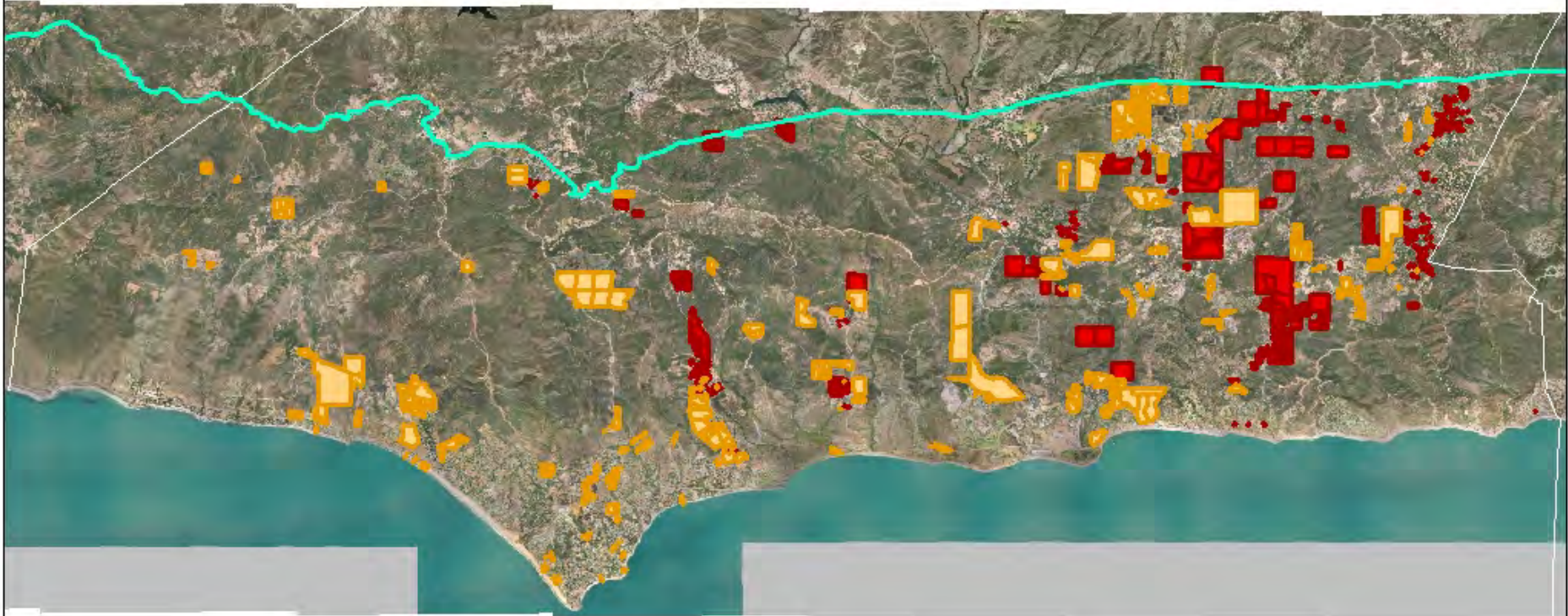
Regional Cumulative Assessment Project:  
Santa Monica Mountains/Malibu Area  
1998

### Retired and GSA Lots in Small Lot Subdivisions in Los Angeles County and Malibu



## Four Coastal Conservancy Lot Retirement Plans

# TDC, GSA & Open Space Easements

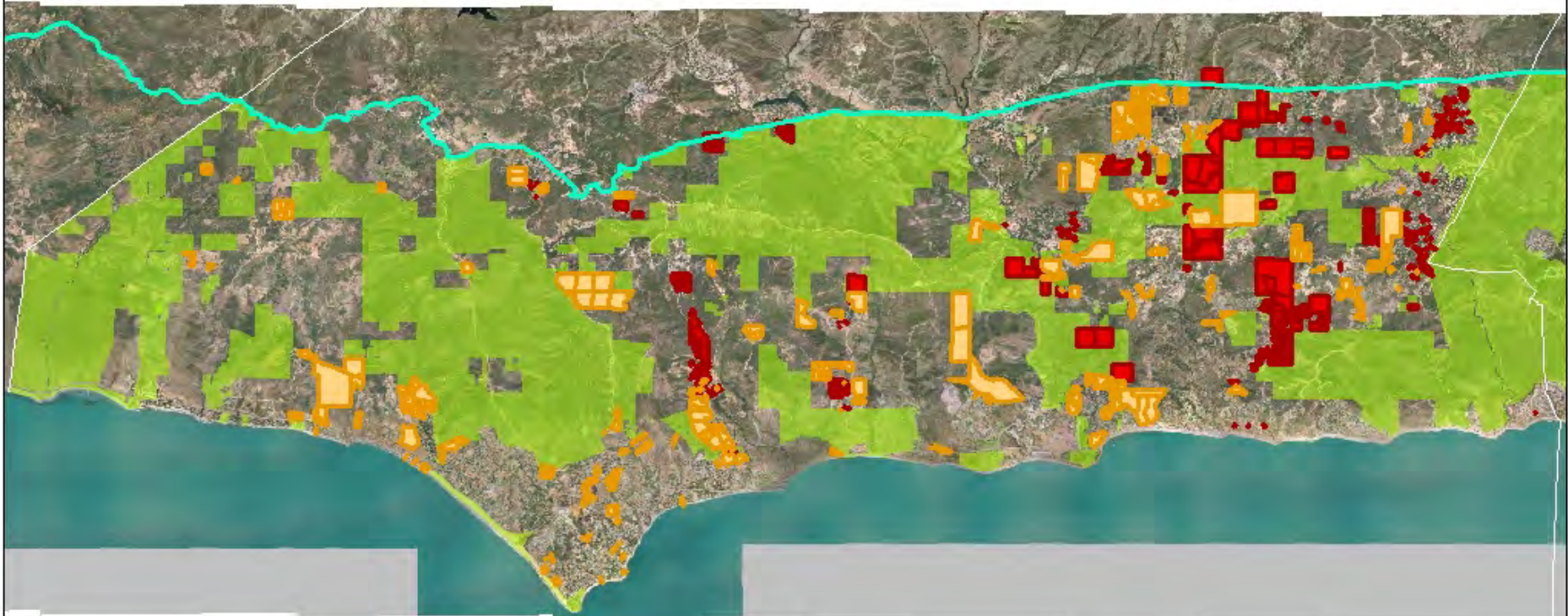


**Parcels with TDCs, GSAs and Lot Recombinations**



**Parcels with Open Space Deed Restrictions, OTDs and Easements**

# Open Space Parcels and Parklands



-  **Parcels with TDCs, GSAs and Lot Recombinations**
-  **Parcels with Open Space Deed Restrictions, OTDs and Easements**
-  **Public Parklands**



**Solstice Canyon - Chaparral**





**90 Lot Subdivision**  
**20 Townhomes**  
**1,400 Acres**  
**2.5 Million Cu. Yds. of Grading**

**5-81-071 (Bel Mar Estates) - 1,400 Acres**



**61 Lot Subdivision**  
**6 Million Cu. Yds. Grading**  
**331 Acres**

Corral Canyon

Puerco Canyon

© 2012 Google  
Data SIO, NOAA, U.S. Navy, NGA, GEBCO

Image © 2012 DigitalGlobe

**5-90-924 (Hope/Potomac) – 331 Acres - Corral Canyon**



**17 Homes**  
**Private Access Road**  
**Rock Revetment**

## Lechuza Beach

Jun 10, 2002

Residence 5 (Ronan)  
Residence 4 (Mulryan)  
Residence 3 (Morleigh)  
Mesa  
Residence 2 (Lunch)  
Residence 1 (Vera)

Image U.S. Geological Survey

©2009 Google

# Sweetwater Mesa Project Area

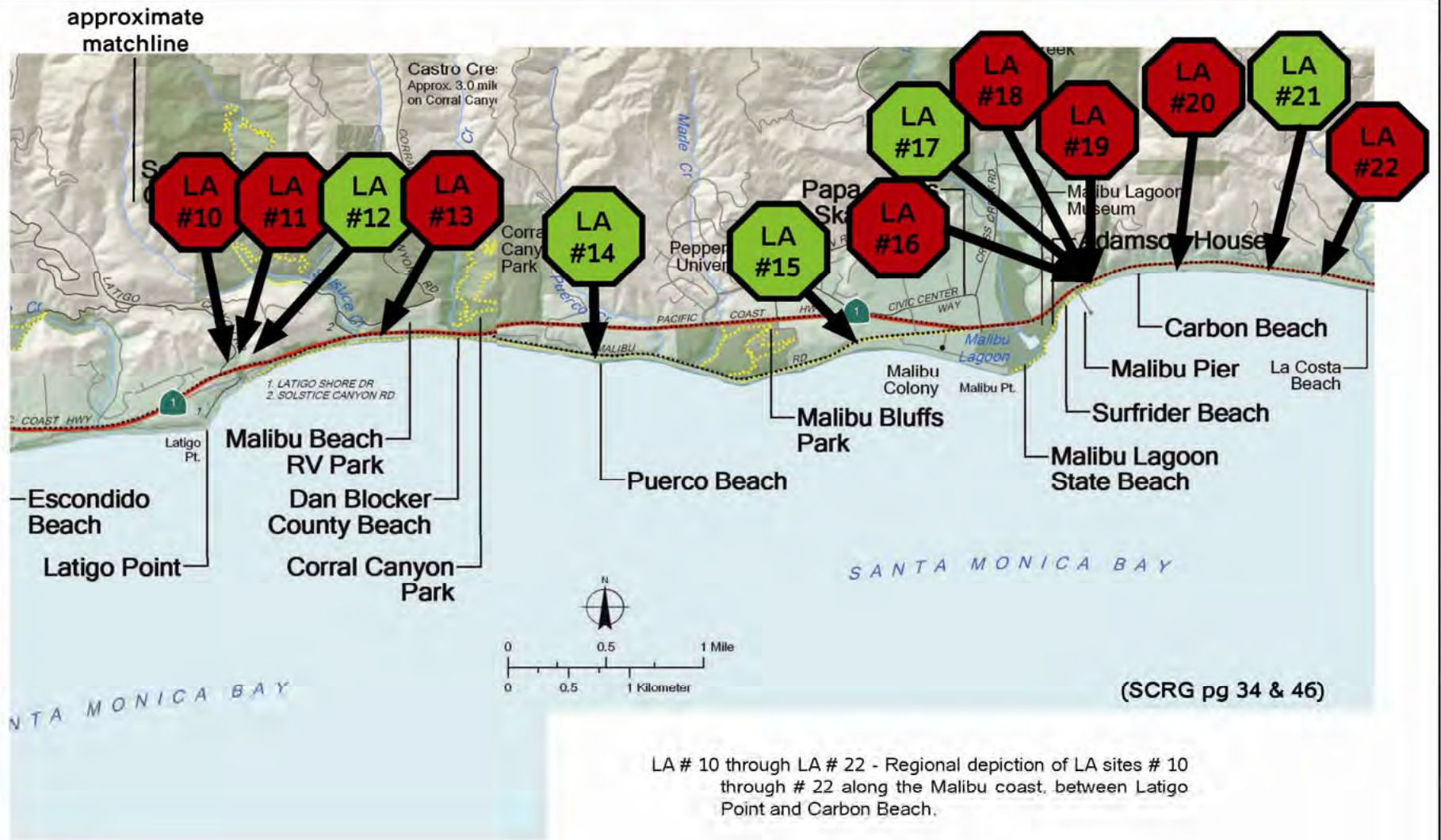
Eye alt 620



**Perenchio Property**

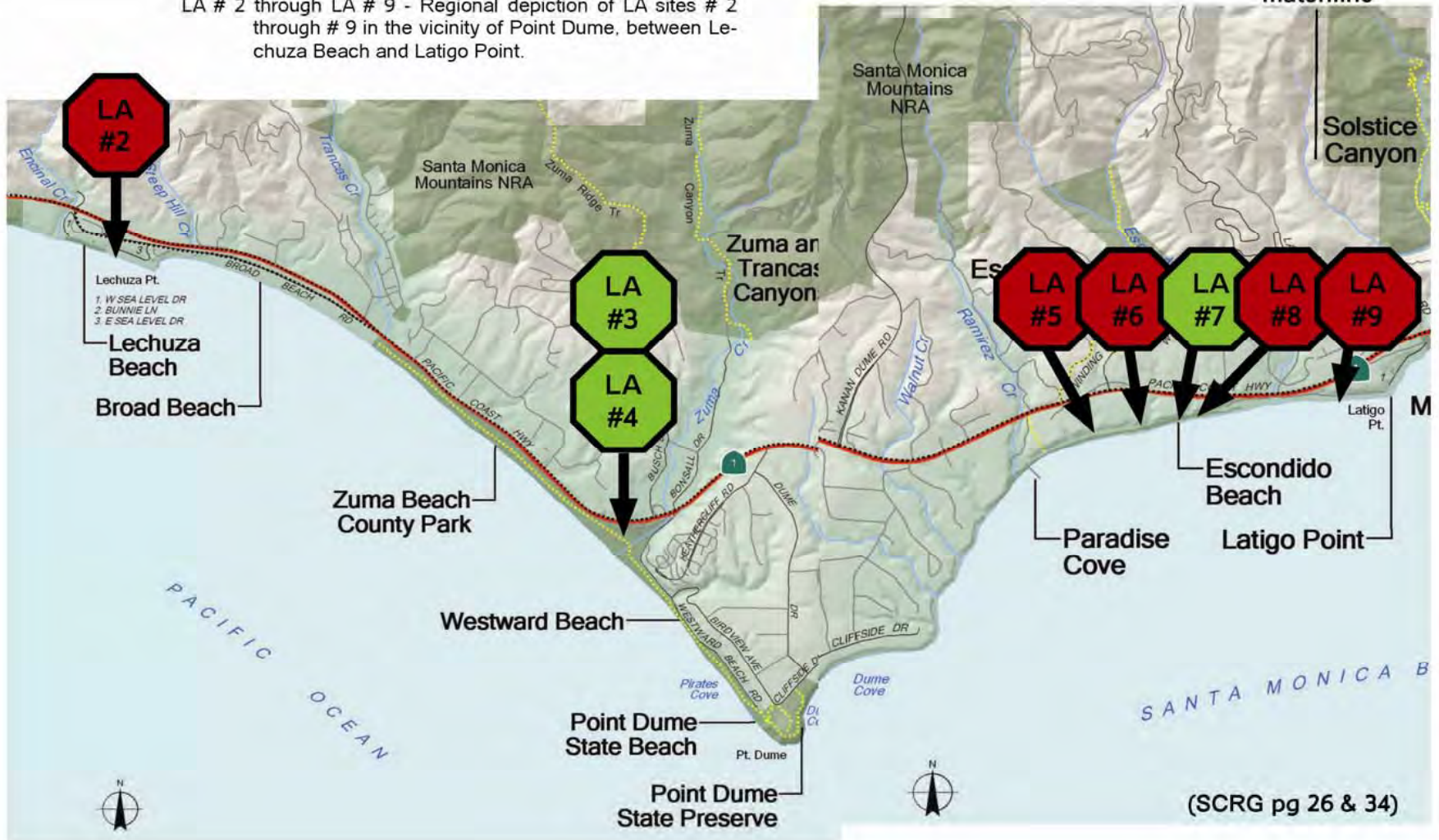
**Malibu Lagoon**

# Malibu Lagoon & Perenchio Property



LA # 2 through LA # 9 - Regional depiction of LA sites # 2 through # 9 in the vicinity of Point Dume, between Lechuza Beach and Latigo Point.

approximate  
matchline



(SCRG pg 26 & 34)





**New Camp Ground Areas**

**Bluffs Park Approved Camp Ground Areas in SMMC/MRCA PWP**









**Corral Canyon – Approved Camp Ground in SMMC/MRCA PWP**

# Inland Trail Easements



-  **Parcels with Public Access OTDs and Easements (Trails, Laterals, Verticals)**
-  **Backbone Trail**
-  **Other Trails**
-  **Public Parklands**

**40 Acres**  
**25 Trailers/Residential Structures**  
**Grading and Roads**  
**Septic Systems**  
**Subdivision**

**Witter- Richardson Vio.**





**Witter-Richardson Vio.**



**Large Residential Development Located Just Outside of the Coastal Zone**