

CALIFORNIA COASTAL COMMISSION

SAN DIEGO AREA

3111 CAMINO DEL RIO NORTH, SUITE 200

SAN DIEGO, CA 92108-1725

(619) 521-8036

RECORD PACKET COPY
November 19, 1998

Th 6a

TO: COMMISSIONERS AND INTERESTED PARTIES

FROM: PETER DOUGLAS, EXECUTIVE DIRECTOR

SUBJECT: **ADOPTION AND CERTIFICATION OF PORT OF SAN DIEGO
BOUNDARY MAP AMENDMENT** (for Commission review at its
meeting of December 8-10, 1998)

BACKGROUND

Section 30710 of the California Coastal Act requires that the Coastal Commission adopt maps delineating the jurisdictional boundaries of the four major port areas within the coastal zone. As provided for in Section 13601(a) of the Commission's Code of Regulations, port boundary maps may be amended to modify the legal geographic boundary if such boundary has changed.

Since the original map adoption by the Commission, the Port of San Diego has acquired additional land located within the corporate limits of the City of National City. The land consists of the eastern portion of two parcels (Parcel 1 = 4.19 acres total; Parcel 2 = 16.74 acres total) located south of 32nd Street, east of Pepper Park and the existing boat launch in the City of National City (see Exhibit #1). The western portion of the subject parcels is currently within the Port District's jurisdictional limits. The Port District acquired the parcels from a private company in 1994. Pursuant to the San Diego Unified Port District Act, such acquisition or interest in land transfers coastal development permit authority for the entirety of both parcels to the Port of San Diego.

Section 13601(c) requires that the commission shall, after reviewing the material prepared by the Executive Director, at public hearing adopt, certify and file with the port district the amendment to such port boundary map. The newly acquired land areas were the subject of Port Master Plan Amendment #19 (National City Marina) certified by the Commission at its meeting of October 11, 1994. This amendment incorporated the parcels into the Port Master Plan and assigned a land use designation of "Commercial Recreation" to the area of Parcel 1 and "Recreational Boat Berthing" to the area of Parcel 2. The location of the newly acquired land is shown on the attached location map. The port boundary map amendment will officially recognize the change that has occurred in the Port District's boundary.

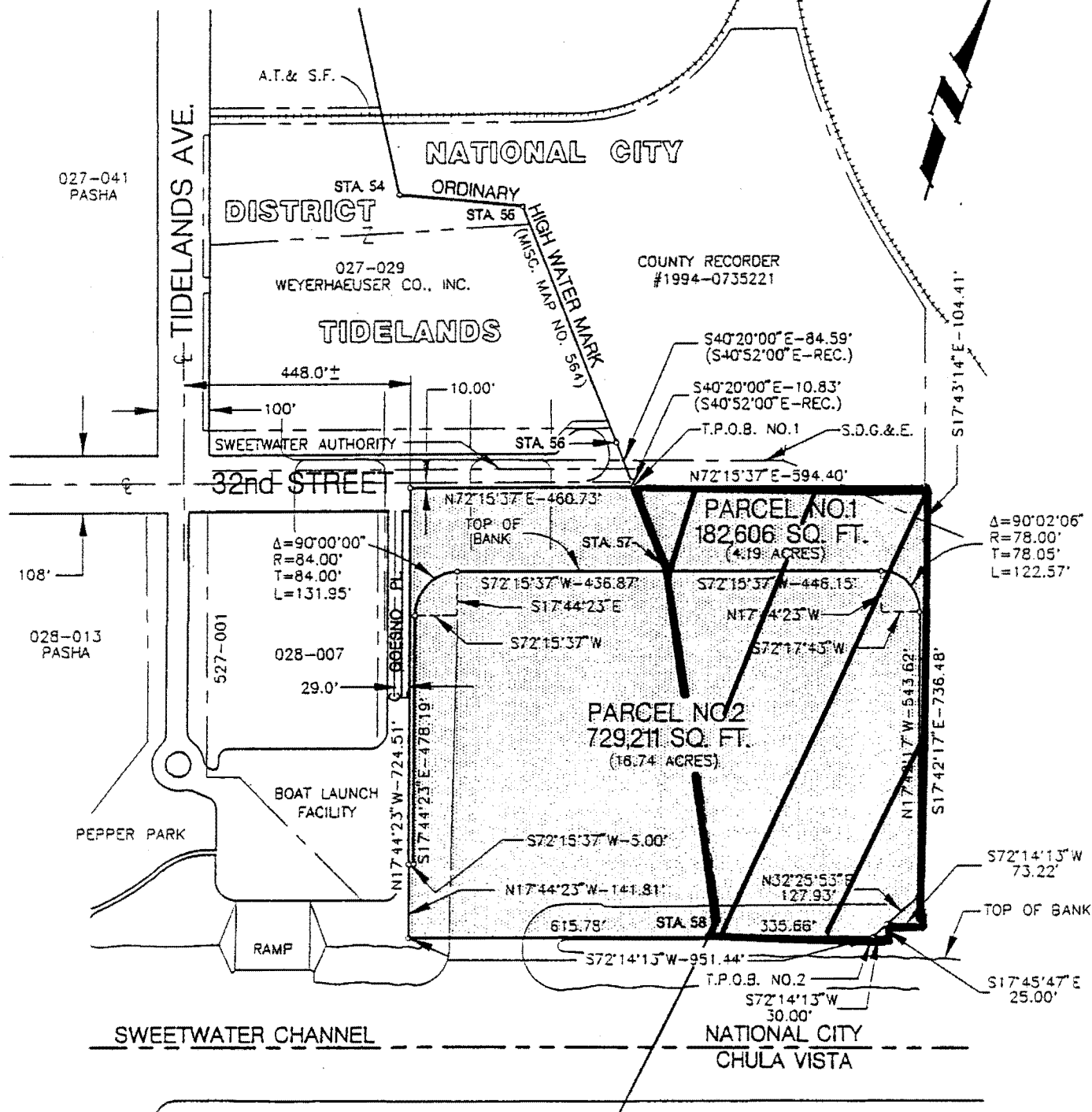
STAFF RECOMMENDATION

MOTION I

I move that the Commission certify the Port Boundary Amendment as submitted.

Staff Recommendation

Staff recommends a YES vote and the adoption of the following resolution and findings. An affirmative vote by a majority of the Commissioners present is needed to pass the motion.



NOTES:

1. LEASE AREAS SHOWN SHADED.
2. BEARINGS AND DISTANCES ARE BASED ON THE CALIFORNIA COORDINATE SYSTEM (N.A.D. 1927) ZONE 6.

DRAWN JFD
CHECKED *BOURKE*
REVIEWED *[Signature]*
APPROVED *Marvin W. Beach*
DIRECTOR OF ENGINEERING

SAN DIEGO UNIFIED PORT DISTRICT
DISTRICT LEASE
WITHIN CORPORATE LIMITS OF NATIONAL CITY
NATIONAL CITY MARINA SITE

EXHIBIT NO. 1

Port Master Plan
Boundary Adjustment

Location Map

California Coastal Commission