

CALIFORNIA COASTAL COMMISSION

45 FREMONT, SUITE 2000
SAN FRANCISCO, CA 94105-2219
VOICE (415) 904-5200
FAX (415) 904-5400
TDD (415) 597-5885



Click here to go to
original staff report

W7

DATE: November 7, 2014

TO: Commissioners and Interested Parties

FROM: Charles Lester, Executive Director
Susan Hansch, Chief Deputy Director
Jack Ainsworth, Senior Deputy Director
Hilary Papendick, LCP Grant Coordinator
Michelle Jesperson, Federal Programs Manager

SUBJECT: **Addendum to Item W7** Proposed Local Coastal Program Local Assistance Grant Awards for Fiscal Year 2014/2015 Using Funds from Budget Augmentation.

This Addendum is submitted to provide recent correspondence relative to this matter and to provide minor changes to the staff report.

1. Ex parte:

- Commissioner Cox, dated November 5, 2014
- Commissioner Zimmer, dated November 10, 2014.

2. Letters of Support:

- Greg L. Sparks, City of Eureka, dated November 4, 2014
- Larry Oetker, City of Arcata, dated November 4, 2014
- Senator Noreen Evans, dated November 5, 2014
- Jack Crider, Humboldt Bay Harbor, Recreation, and Conservation District, dated November 5, 2014
- Eric T. Nelson, United States Fish and Wildlife Service, dated November 5, 2014
- Chris Heppe, United States Bureau of Land Management, dated November 6, 2014
- Glen K. Van Peski, City of Carlsbad, dated November 6, 2014

3. Correspondence

- Diane Sokolove, City and County of San Francisco, sent a letter on November 4, 2014 thanking staff for the award recommendation and notifying staff of the packet the City sent to Commissioners.

The following are changes to the staff report (deleted language indicated by ~~strike-through~~ and added language by underline):

Page 22, In the City of Monterey Award Recommendation section, modify the text as follows:
~~\$20,0000~~ \$15,000 reduction

Page 52, In the City of Carlsbad Review Table, modify the Climate Change column as follows:
~~High-~~ Medium-

Page 56, in the County of Humboldt Review Table, Modify the Need/Extent column as follows:
Medium- Only focuses on Bay, but need is great. ~~LCP is from 1992~~ The LUP for the Humboldt Bay Plan was certified in 1982 and the Humboldt County LCP was certified in 1986, and conditions have changed significantly since then. Commission staff have urged County to complete industrial/coastal dependent land uses market study before updating LCP to address changed conditions.

DISCLOSURE OF EX PARTE COMMUNICATIONS

Name or description of project:

LCP Grants. Public hearing and possible Commission action on proposed grant awards for LCP Planning for Fiscal Year (FY) 2014-2015. (JA/HP-SF)

Date and time of receipt of communication:

November 5, 2014 at 2:00pm

Location of communication:

San Diego

Type of communication:

Teleconference

Person(s) in attendance at time of communication:

Diana Sokolove, Senior Planner, City/County of San Francisco

Person(s) receiving communication:

Greg Cox, and staff Greg Murphy

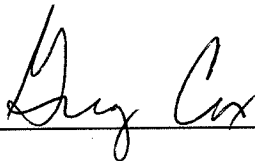
Detailed substantive description of the content of communication:

Ms. Diana Sokolove expressed her appreciation that San Francisco is being recommended funding for LCP planning work, and she indicated how important it was to update their LCP, which was last updated in 1986, to include sea-level rise and climate change.

Date:

11/5/14

Signature of Commissioner: _____



FORM FOR DISCLOSURE OF EX PARTE COMMUNICATIONS

Name or description of project: LCP grant W7

Date and time of receipt of communication: November 10, 2014 9:00 a.m.

Location of communication: Santa Barbara

Type of communication (letter, facsimile, etc.): telecon

Person(s) initiating communication: City of San Francisco Diana Sokolove, Senior Planner with the San Francisco Planning department.

They have a proposal for an LCP grant. Staff is recommending a portion and almost 90% total will be funded. LCP certified in 1986, doesn't take into account the real issues we are facing today, e.g. sea level rise. Wanted to mention that they are not looking to do a full blown update right now, they can incorporate an amendment for SLR at this time and looking to build momentum to build relationships to get important piece past. They have worked with a think tank around a long term plan for the coast.

Jana Zimmer 11/10/14



CITY OF EUREKA

531 K Street • Eureka, California 95501-1146

CITY MANAGER

• (707) 441-4144
fax (707) 441-4138

November 4, 2014

Hilary Papendick
Statewide LCP Grant Coordinator
California Coastal Commission
45 Fremont Street, Suite 2000
San Francisco, CA 94105

Abe Doherty
Ocean Protection Council
CA Natural Resources Agency
1416 Ninth Street, Suite 1311
Sacramento, CA 95814

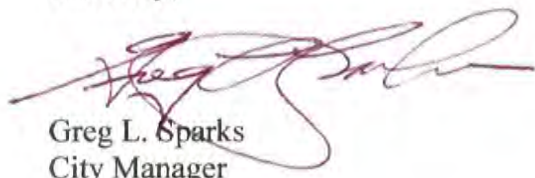
Dear Ms. Papendick and Mr. Doherty:

The City of Eureka would like to renew its support for Humboldt County's application to the California Coastal Commission and Ocean Protection Council for funding to update the Humboldt Bay Area Local Coastal Program (LCP). The City is in the process of updating our LCP, and looks forward to coordinating and cooperating with the County as we move forward with our LCP updates.

We are already working together to address regional planning issues, including sea level rise. The City and the County, together with many other local, state and federal agencies, are participating in the Humboldt Bay Sea Level Rise Adaptation Planning Project. The goal of the project is to support informed decision-making and encourage a unified, consistent regional adaptation strategy to address impacts associated with sea level rise in the Humboldt Bay region, benefitting both the City and County in their LCP update efforts. The City also anticipates working cooperatively with the County to specifically address the inventory and need for Coastal-Dependent Industrial zoned lands, as well as to address broader LCP policy issues, during our respective LCP updates.

The update of the Humboldt Bay Area LCP is important to the City of Eureka since we abut the Humboldt Bay Area planning area, and further, is an important regional planning effort. We therefore encourage you to award the County the funding they are seeking.

Sincerely,



Greg L. Sparks
City Manager



736 F Street
Arcata CA 95501

City Manager
707-822-5953

Environmental Services
707-822-8184

Police
707-822-2428

Recreation
707-822-7091

Community Development
707-822-5955

Finance
707-822-5951

Public Works
707-822-5957

Transportation
707-822-3775

Hilary Papendick
Statewide LCP Grant Coordinator
California Coastal Commission
45 Fremont Street, Suite 2000
San Francisco, CA 94105

November 4, 2014

Abe Doherty
Ocean Protection Council
CA Natural Resources Agency
1416 Ninth Street, Suite 1311
Sacramento, CA 95814

Dear Ms. Papendick and Mr. Doherty –

The City of Arcata supports the County of Humboldt's application to the California Coastal Commission and the Ocean Protection Council for funding to update its Humboldt Bay Area Plan, a critical component of its Local Coastal Program (LCP).

As the Cities of Arcata and Eureka continue to make progress on our own LCP updates, having the County of Humboldt as a regional partner makes sense in terms of data development, information sharing and public participation and outreach. We look forward to working with County Staff, in addition to others, as we continue to develop long-range planning policies that affect all jurisdictions in the Humboldt Bay area.

If you have questions or need additional assistance, please do not hesitate to call (707-822-5955) or email me directly at loetker@cityofarcata.org.

Regards,

Larry Oetker, Director
Arcata Community Development Department

Cc: John Miller, Humboldt County Planning & Building

BANKING AND FINANCIAL
INSTITUTIONS
CHAIR

COMMITTEES

HEALTH

LEGISLATIVE ETHICS

NATURAL RESOURCES & WATER

PUBLIC EMPLOYMENT &
RETIREMENT

JOINT COMMITTEE ON FISHERIES
AND AQUACULTURE

WOMEN'S CAUCUS

ENVIRONMENTAL CAUCUS

RURAL CAUCUS

SELECT COMMITTEE ON
CALIFORNIA'S WINE INDUSTRY
CHAIR

California State Senate

SENATOR
NOREEN EVANS
SECOND SENATE DISTRICT



STATE CAPITOL
SACRAMENTO, CA 95814
(916) 651-4002

DISTRICT OFFICES
50 D STREET
SUITE 120A
SANTA ROSA, CA 95404
(707) 576-2771

710 E STREET
SUITE 150
EUREKA, CA 95501
(707) 445-6508

200 SOUTH SCHOOL STREET
UKIAH, CA 95482
(707) 468-8914

3501 CIVIC CENTER DRIVE
SUITE 425
SAN RAFAEL, CA 94903

401 AMADOR STREET
VALLEJO, CA 94590
(707) 648-5312

November 5, 2014

Steve Kinsey, Chair
California Coastal Commission
45 Fremont Street, Suite 2000
San Francisco, CA 94105

RE: Humboldt Bay Area Local Coastal Plan Update

Dear Chairman Kinsey:

I am writing in support of the ***Humboldt Bay Area Local Coastal Plan (LCP) Project*** submitted by Humboldt County to the California Coastal Commission for funding consideration. I understand that a primary focus of the LCP update will be development of adaptation strategies to address the effects of sea level rise. This planning must take place in close coordination with the cities around Humboldt Bay who have already begun their updates.

The lands surrounding Humboldt Bay are at particular risk to coastal flooding due to the position of numerous shoreline structures and predicted sea level rise. Humboldt Bay has experienced the most significant relative sea level rise of any area on the west coast over the last 100 years, approximately 18 inches, due to vertical ground motion and subsidence. Communities, coastal resources, infrastructure, and the local way of life would be greatly affected by future sea level rise. In an effort to prepare for this, Humboldt County has developed a strong working partnership with other local, state, and federal agencies around Humboldt Bay through the Humboldt Bay Sea Level Rise Planning Working Group.

The impacts of sea level rise on communities, resources, and regional infrastructure cannot be addressed by local agencies in isolation. This grant will allow Humboldt County to conduct land use planning in close coordination with the local cities, the Humboldt Bay Harbor District, and state and federal resource agencies and achieve the best possible outcome.

I urge favorable consideration of the Humboldt Bay Area Local Coastal Plan Update. Please contact Zuretti Goosby at my Eureka District office if you have any questions.

Sincerely,

A handwritten signature in black ink that reads 'Noreen Evans'.

NOREEN EVANS
Senator, 2nd District

NE:zg

COMMISSIONERS

1st Division
Aaron Newman
2nd Division
Greg Dale
3rd Division
Mike Wilson
4th Division
Richard Marks
5th Division
Patrick Higgins

**HUMBOLDT BAY
HARBOR, RECREATION, AND CONSERVATION
DISTRICT**

(707) 443-0801
P.O. Box 1030
Eureka, California 95502-1030



November 5, 2014

Steve Kinsey, Chair
Members of the Coastal Commission
California Coastal Commission
45 Fremont Street, Suite 2000
San Francisco, CA 94105

Dear Commissioners:

I am writing this letter in support of Coastal Commission staff's recommendation to approve Humboldt County's application for Coastal Commission funding to update the Humboldt Bay Area Local Coastal Plan (LCP).

Two of the primary focus areas of the grant are critical to the Humboldt Bay Harbor, Recreation and Conservation District (District), including the development of adaptation strategies to address the effects of sea level rise, and comprehensive planning relating to Industrial/Coastal Dependent lands around Humboldt Bay. It is important that this planning take place as soon as possible and in close coordination with the District and cities around Humboldt Bay, who have already begun their LCP updates through the benefit of state grant funding. Any delays in grant funding could effect this planning.

I urge you to approve this important grant to Humboldt County for strategic planning for coastal-dependent uses and adaptive planning to address sea level rise.

Sincerely,

Jack Crider
Executive Director



United States Department of the Interior

FISH AND WILDLIFE SERVICE

Humboldt Bay National Wildlife Refuge Complex
P.O. Box 576, 1020 Ranch Road
Loleta, California 95551
(707) 733-5406 Phone (707) 733-1946 Facsimile



Steve Kinsey, Chair
Members of the Coastal Commission
California Coastal Commission
45 Fremont Street, Suite 2000
San Francisco, CA 94105

Dear Commissioners:

I am writing this letter in support of Coastal Commission staff's recommendation to approve Humboldt County's application for Coastal Commission funding to update the Humboldt Bay Area Local Coastal Plan (LCP). A primary focus of the County's LCP update will be to develop adaptation strategies to address the effects of sea level rise. This planning must take place in close coordination with the cities around Humboldt Bay who have already begun their updates through the benefit of state grant funding.

Lands around Humboldt Bay are at particular risk to coastal flooding due to the condition of shoreline structures and predicted sea level rise. Humboldt Bay has experienced the most significant relative sea level rise of any area on the west coast over the last 100 years, approximately 18 inches, due to vertical ground motion and subsidence. Communities, coastal resources, infrastructure, and the local way of life would be greatly affected by future sea level rise. In an effort to prepare for this, Humboldt County has developed a strong working partnership with other local, state, and federal agencies around Humboldt Bay through the Humboldt Bay Sea Level Rise Planning Working Group. The Humboldt Bay cities of Eureka and Arcata have received state grant funding to update their LCP's. Caltrans has received federal funding to carry out a Climate Change Adaptation Pilot Strategy for U.S 101, which is susceptible to Humboldt Bay tidal inundation by sea level rise and flooding from extreme events. The impacts of sea level rise on communities, resources, and regional infrastructure cannot be addressed by local agencies in isolation. This grant will allow Humboldt County to conduct land use planning in close coordination with the local cities, the Humboldt Bay Harbor District, and state and federal resource agencies and achieve the best possible outcome.

I urge you to approve this important grant to Humboldt County for adaptive planning to address sea level rise. Thanks again for assisting Humboldt County in this important planning effort.

Eric T. Nelson, Refuge Manager





United States Department of the Interior

BUREAU OF LAND MANAGEMENT

Arcata Field Office
1695 Heindon Road
Arcata, CA 95521
www.ca.blm.gov/arcata



November 6, 2014

In Reply Refer To:
1780(CA330)P

Steve Kinsey, Chair
Members of the Coastal Commission
California Coastal Commission
45 Fremont Street, Suite 2000
San Francisco, CA 94105

Dear Commissioners:

The Bureau of Land Management (BLM) appreciates Humboldt County's initiative to update the Humboldt Bay Area Local Coastal Plan (LCP), with support from the California Coastal Commission. Through strong partnerships with other federal, state and local agencies the BLM manages many areas in the vicinity of Humboldt Bay including extensive portions of the coastal dunes surrounding Humboldt Bay. Maintaining and strengthening these partnerships will be key in planning for the changing conditions associated with continuing sea level rise and tectonic activity that threatens to reshape the lands around Humboldt Bay.

BLM manages the Ma-le'l Dunes Cooperative Management Area, Samoa Dunes Recreation Area, and the Mike Thompson Wildlife Area, South Spit Humboldt Bay located around Humboldt Bay. These areas contain facilities for a diverse array of recreation opportunities as well as unique habitat for several sensitive species of plants and animals. Sea level rise and tectonic activity will continue to impact coastal resources, infrastructure and the local way of life around Humboldt Bay. A coordinated approach to land use planning through the LCP will be a significant step in addressing these complex issues.

BLM is a willing participant in a coordinated land use planning process to address sea level rise. Support by the Coastal Commission is greatly appreciated to help facilitate this much needed effort.

If you have any questions or need further information, please contact me at (707) 825-2300.

Sincerely,

Chris Heppe
Acting Arcata Field Manager



CITY OF
CARLSBAD

Community & Economic Development

www.carlsbadca.gov

November 6, 2014

Chair Kinsey and Honorable Commissioners
California Coastal Commission
45 Fremont St., Suite 2000
San Francisco, CA 94105-2219

SUBJECT: AGENDA ITEM W7: PROPOSED LOCAL COASTAL PROGRAM LOCAL ASSISTANCE GRANT AWARDS FOR FISCAL YEAR 2014-2015 USING FUNDS FROM BUDGET AUGMENTATION

Dear Chair Kinsey and Honorable Commissioners:

The City of Carlsbad supports staff's recommendations regarding Coastal Commission and Ocean Protection Council (OPC) grant awards for the City of Carlsbad. The city respectfully requests the Coastal Commission approve the grant awards as recommended by your staff.

Recognizing the need for critical planning based on current information, the city has initiated an update to its Local Coastal Program (LCP) in conjunction with its General Plan Update, both of which are currently underway. The Coastal Commission and OPC grant funds would significantly assist the City of Carlsbad in comprehensively updating its LCP to address the important issue of sea-level rise, using the Commission's Draft Sea-Level Rise Policy Guidance, and utilizing the best available science and modeling protocols. The grant funds will also assist Carlsbad in obtaining certification of the Agua Hedionda Lagoon Segment and areas of deferred certification.

We would like to express our appreciation to Coastal Commission and Ocean Protection Council staff for their hard work in evaluating all the grant applications and making sensible funding recommendations that balance the needs of all coastal regions and ensure the wise use of public funds in carrying out this critical planning effort.

Sincerely,

GLEN K. VAN PESKI

Community & Economic Development Director

GVP:JJ:bd

c: Don Neu, City Planner
David de Cordova, Principal Planner
File Copy
Data Entry



Planning Division

1635 Faraday Avenue, Carlsbad, CA 92008-7314 T 760-602-4600 F 760-602-8559





SAN FRANCISCO PLANNING DEPARTMENT

November 4, 2014

Hilary Papendick
Statewide LCP Grant Manager/ Coastal Program Analyst
California Coastal Commission
45 Fremont St. Suite 2000
San Francisco, CA 94105

RECEIVED

NOV 07 2014

CALIFORNIA
COASTAL COMMISSION

1650 Mission St.
Suite 400
San Francisco,
CA 94103-2479

Reception:
415.558.6378

Fax:
415.558.6409

Planning
Information:
415.558.6377

Dear Ms. Papendick:

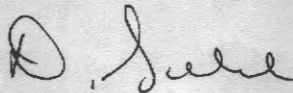
On behalf of the City and County of San Francisco, thank you for your staff recommendation to fund our proposal to the Local Coastal Program Planning Grant program. San Francisco is fully committed to a successful, coordinated, and collaborative process with the potential to significantly increase public access to the coast.

We have sent the enclosed packet to the following Commissioners of the Coastal Commission in anticipation of the meeting on November 12 in Half Moon Bay.

- John Laird, Secretary, Natural Resources Agency
- Jennifer Lucchesi, Executive Officer, State Lands Commission
- Brian P. Kelly, Secretary, California State Transportation Agency
- Belinda Faustinos
- Terri Bowman
- Steve Kram
- Randy Pestor
- Dr Paul Song
- Sarah Glade Gurney, Mayor, City of Sebastopol
- Maricela Morales
- Olga Diaz
- Effie Turnbull-Sanders
- Wendy Mitchell
- Martha McClure, Supervisor, County of Del Norte
- Erik Howell
- Dayna Bochco
- Mary K. Shallenberger
- Steve Kinsey, Supervisor, County of Marin
- Gregory Cox,
- Jane Zimmer
- Mark Vargas
- Carole Groom

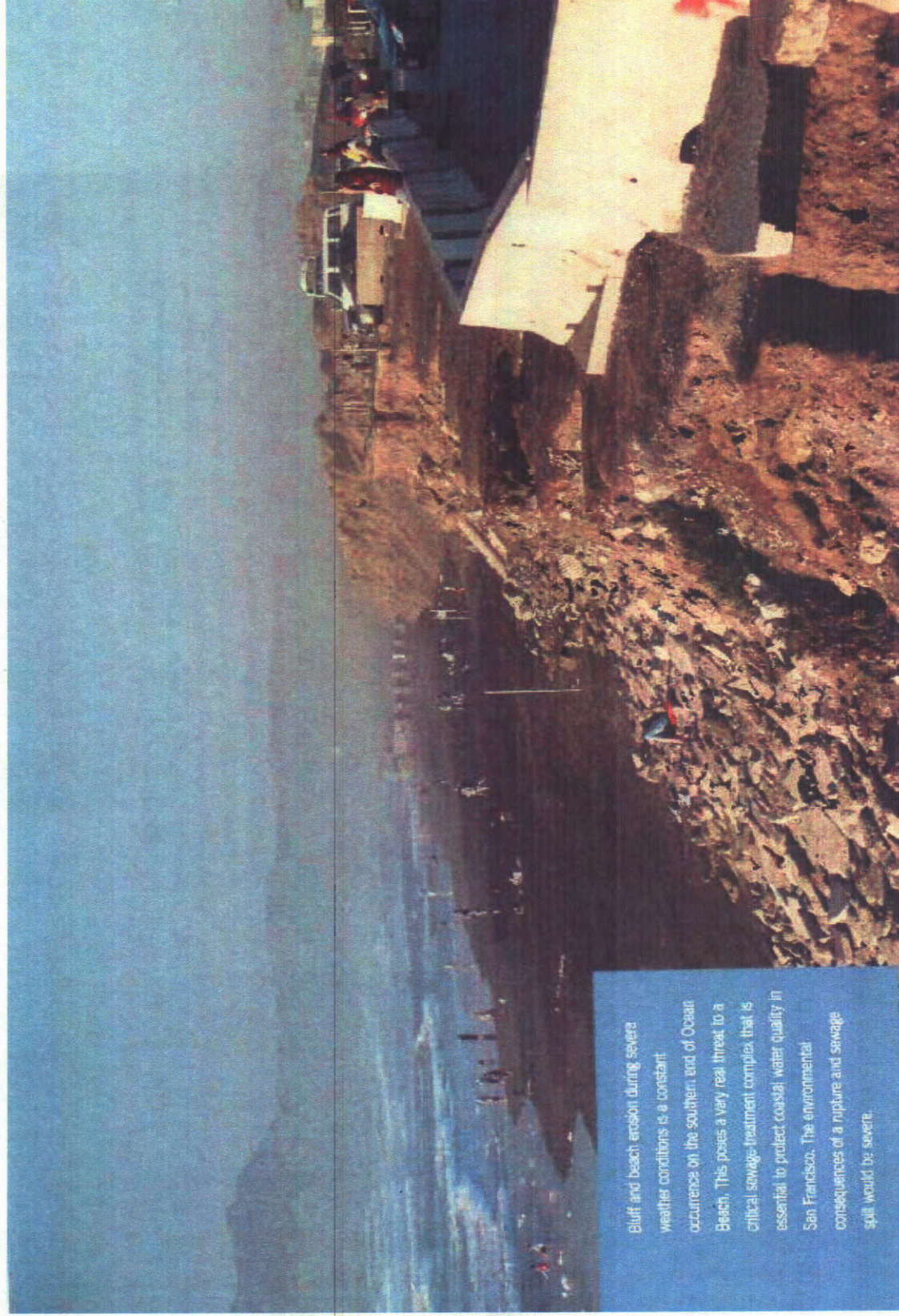
This is important and much needed work to ensure that our Local Coastal Program accounts for the significant changes along our coastline related to sea-level rise and charts a path forward to the long-term management and protection of San Francisco's coastal resources.

Sincerely,

A handwritten signature in dark ink, appearing to read "D. Sokolove". The signature is fluid and cursive, with a large initial "D" and a long, sweeping underline.

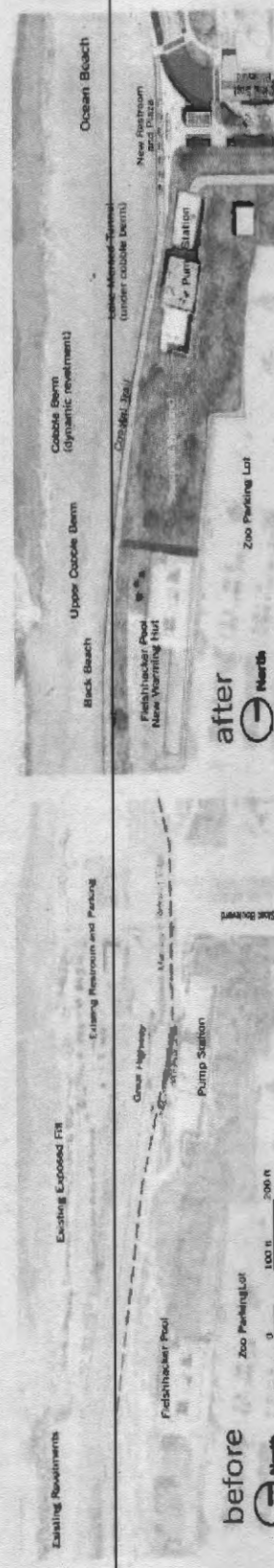
Diana Sokolove
Senior Planner

Erosion At Ocean Beach



Bluff and beach erosion during severe weather conditions is a constant occurrence on the southern end of Ocean Beach. This poses a very real threat to a critical sewage-treatment complex that is essential to protect coastal water quality in San Francisco. The environmental consequences of a rupture and sewage spill would be severe.

Key Move 1 from Ocean Beach Master Plan



Key Move 2 from Ocean Beach Master Plan



	Hourly salary rate (through 6/30/16)	total hours (over 2 yr grant period)	Total salary cost	CCC Indirect costs (10%) [1]	OPC Indirect costs (25%) [1]	Fringe Benefits [2]	Applicant's Funding	CCC Grant Funding	OPC Grant Funding	Other Funds
Personnel										
Salaries and wages ¹										
Diana Sokolove, 5293 Planner IV	\$62.0791	1040	\$64,562.23	-	-	\$30,667.06	\$95,229.28			
Chris Kern, 5299 Envir Planner IV	\$62.0791	208	\$12,912.45	-	-	\$6,133.41	\$19,045.86			
TBD, 5278 Planner II	\$44.1136	2080	\$91,756.21	-	-	\$43,584.20	\$135,340.41			
GIS/Graphics, 5278 Planner II	\$44.1136	208	\$9,175.62	-	-	\$4,358.42	\$13,534.04			
Anna Roche (SFPUC), 5602 Utility Specialist	\$62.6469	100	\$6,264.69	-	\$1,566.17	\$2,505.88			\$10,336.74	
TBD (SFMTA), Staff	\$60.0000	100	\$6,000.00	-	\$1,500.00	\$2,400.00			\$9,900.00	
Frank Filice (SFPDW), 0931 Manager III	\$65.5125	100	\$6,551.25		\$1,637.81	\$2,620.50			\$10,809.56	
Andrea Ruiz Esquide (City Attorney)	\$102.3900	90	\$9,215.10	\$921.51		\$3,686.04		\$13,822.65		
Total Personnel							\$263,149.59	\$13,822.65	\$31,046.31	\$ -
Consultants										
TBD Consultant: Outreach Facilitator							\$ 60,000.00			
TBD Consultant: Data Synthesis, Response to Comments									\$ 60,000.00	
SPUR							\$ 15,000.00			
Total Consultants							\$ -	\$ 75,000.00	\$ 60,000.00	\$ -
Operating Expenses										
Printing & Postage for meeting notification (15,000 * .25)							\$ 3,750.00			
Supplies/Materials										
facility rental (8 meetings * \$250)							\$ 2,000.00			
refreshments (8 meetings * \$150)							\$ 1,200.00			
Total Operating Expenses							\$ 1,200.00	\$ 5,750.00	\$ -	\$ -
Total Budget							\$ 264,349.59	\$ 94,572.65	\$ 91,046.31	\$ -
Total Project Cost							\$ 449,968.55			

^[1] Indirect costs include, for example, a pro rata share of rent, utilities, and salaries for certain positions indirectly supporting the proposed project but not directly staffing it. Per 8/8/14 email from CCC staff, a Indirect cost limit for Coastal Commission funds is 10% of total personnel costs, and the limit for OPC funds is 25% of total direct costs.

^[2] Amount requested for benefits is 40% of amount requested for salary. The fringe rate applied to Planning staff, which is being funded through the applicant's match, is 47.5%.

Project Funding Sources by Task

Task Number	Task Name	Total Cost	Allocation of total cost among all funding sources			
			Applicant's Funding	CCC LCP Grant Funding	OPC SLR Grant Funding	Other Funds (define below)
1	Public and Agency Engagement	\$177,884	\$66,087	\$80,750	\$31,046	
2	Existing Data and Analyses	\$126,087	\$66,087		\$60,000	
3	Policy Development	\$79,910	\$66,087	\$13,823		
4	Approval Process	\$66,087	\$66,087			
TOTAL		\$449,969	\$264,350	\$94,573	\$91,046	\$0

CALIFORNIA COASTAL COMMISSION

45 FREMONT, SUITE 2000
SAN FRANCISCO, CA 94105-2219
VOICE (415) 904-5200
FAX (415) 904-5400
TDD (415) 597-5885



W7

DATE: October 30, 2014

TO: Commissioners and Interested Parties

FROM: Charles Lester, Executive Director
Susan Hansch, Chief Deputy Director
Jack Ainsworth, Senior Deputy Director
Hilary Papendick, LCP Grant Coordinator
Michelle Jesperson, Federal Programs Manager

SUBJECT: **Proposed Local Coastal Program Local Assistance Grant Awards for Fiscal Year 2014/2015 Using Funds from Budget Augmentation.**

The Commission staff planned for a two hearing review process for the LCP grants to give the Commission and the public more time for discussion and consideration. The item is noticed for possible action. Therefore, the Commission has the option of awarding the grants at the November or December hearing, or later. The Commission may choose to make final grant awards in November, or may choose to continue the discussion until the December hearing. OPC action is anticipated on December 2, 2014 prior to the Commission's December 10-12 meeting.

SUMMARY OF STAFF RECOMMENDATION

The Budget Act of 2014 provides an appropriation of \$1 million in Local Assistance funds for Coastal Commission grants to local governments to support Local Coastal Program (LCP) planning. These are the second Commission LCP Local Assistance grant funds available since Fiscal Year 2000/2001. On August 14, 2013 the Commission adopted the priorities and criteria for reviewing and recommending awards for the LCP Local Assistance Grant Program and authorized staff to solicit and evaluate proposals subject to the requirement that the Commission approve final selection of any grants awarded under this program.¹ The application period for FY2014/2015 opened on April 22, 2014 and closed on July 7, 2014.

For this second round of grants, Commission staff coordinated the application and review process with the Ocean Protection Council's (OPC) LCP Sea-Level Rise (SLR) Grant Program, which provides funds specifically for local and regional vulnerability assessments and updates to

¹ <http://documents.coastal.ca.gov/reports/2013/8/W31b-8-2013.pdf>

LCPs and other Coastal Act authorized plans to address sea-level rise, coastal hazards and other climate change related impacts. Because both grant programs share the common objective of certifying and updating LCPs, staff from both agencies conducted a joint solicitation for applications. Through the joint-application, applicants had the option to submit one work program and budget for the two grant programs. This way, the applicants could demonstrate how the grant funds would be combined to fund a single LCP update or new LCP. This also eliminated the potential for applicants to submit duplicate requests to the two grant programs.

The Coastal Commission received 16 grant applications for grants totaling \$2,068,232² (See [Attachment A](#)). The grant requests range from a low of \$50,000 to a high of \$450,000. Eight of the 16 grant applications were joint applications, and included a proposal to the OPC to fund the sea-level rise portion of the LCP work program.

GRANT REVIEW PROCESS

Coastal Commission staff ranked the applications according to the adopted criteria, with input from Commission District staff, and OPC staff, and Coastal Conservancy staff (See [Attachment B](#) for the adopted criteria, and [Attachment C](#) for the rankings). Staff from the OPC and Coastal Commission then worked together on their respective recommendations in order to identify possible opportunities to best leverage the use of funds from the two grant programs to fund the most high-ranking projects as possible.³ To maximize the awards for high-ranked projects, the OPC staff, in consultation with Commission staff, will recommend to the OPC that they fund some sea-level rise-related portions of the Coastal Commission proposals that fit the OPC criteria. If authorized by the OPC, this would free up funds for the Commission to fund more high-ranked proposals that only requested Coastal Commission funds.

The joint application process provided an opportunity for the OPC and Coastal Commission staffs to work together to develop staff recommendations, and the OPC staff fully support the recommendations provided in this staff report. However, the OPC and Coastal Commission staff recommendations are separate staff recommendations, to be acted on separately by the governing bodies of the respective agencies, based on the adopted criteria of the two grant programs. The OPC is tentatively scheduled to consider the OPC grant requests on December 2, 2014.

COASTAL COMMISSION AWARD OF GRANTS

Commission staff recommends the Commission award 12 grants for a total of \$1,000,000. [Table 1](#), below, and [Section VII](#) provide a summary of the Coastal Commission staff recommendations (see shaded column).

² Note: In supplemental information provided in response to staff follow-up questions, the City of San Francisco reduced their request from \$98,475 from both the OPC and Coastal Commission to \$94,573 from the Coastal Commission and \$91,046 from the OPC, which reduced the total amount requested from \$2,072,134 to \$2,068,232.

³ The OPC staff, with input from the Coastal Commission and Coastal Conservancy, ranked the OPC grant proposals according to the OPC grant criteria, adopted by the OPC on March 27, 2013.

Proposed LCP Grant Awards for Fiscal Year 2014/2015

Table 1 and Section VII also include OPC staff recommendations for the OPC grant awards. For 6 of the 12 recommended Coastal Commission grants, local governments applied for a combination of Coastal Commission and OPC funds to complete their LCP project. The Coastal Commission staff award recommendation for these six proposals, therefore, represents only a portion of total grant funds that the project could receive. For this reason, the table of recommended awards includes both the OPC staff recommendations and the Commission staff recommendations to show the complete amount of funds each proposal could receive under both grant programs.

Table 1. Coastal Commission and OPC Staff Grant Award Recommendations for FY2014/2015. Note: Table 1 includes only proposals recommended for funding. For the full list of submitted applications, see [Attachment A](#).

Jurisdiction	Type of Project	Grant Request (\$)			Staff Recommendation (\$)		
		CCC	OPC	Total Request	CCC	OPC	Total Rec'd
North Coast							
Humboldt County	LCP update	\$100,000	\$25,000	\$125,000	\$35,000	\$90,000	\$125,000
City of Trinidad	LCP update/Cert of ADC	\$80,000	\$0	\$80,000	\$80,000	\$0	\$80,000
North Central							
City and County of San Francisco	LCP update	\$94,573	\$91,046	\$185,619	\$13,000	\$160,750	\$173,750
Central							
City of Monterey	New LCP	\$150,000	\$100,000	\$250,000	\$35,000	\$200,000	\$235,000
City of Morro Bay	LCP update	\$147,000	\$0	\$147,000	\$147,000	\$0	\$147,000
South Central							
County of Santa Barbara	LCP update	\$64,000	\$119,000	\$183,000	\$8,000	\$175,000	\$183,000
City of Oxnard	LCP update	\$75,000	\$75,000	\$150,000	\$40,000	\$110,000	\$150,000
South Coast							
City of Santa Monica	New LCP	\$250,000	\$0	\$250,000	\$225,000	\$0	\$225,000
City of Los Angeles	New LCP	\$450,000	\$0	\$450,000	\$250,000	\$0	\$250,000
City of Newport Beach	New LCP	\$87,540	\$0	\$87,540	\$67,000	\$0	\$67,000
San Diego							
County of San Diego	New LCP	\$52,000	\$0	\$52,000	\$52,000	\$0	\$52,000
City of Carlsbad	LCP update/Cert of 2 ADCs	\$100,000	\$150,000	\$250,000	\$48,000	\$180,000	\$228,000
City of Del Mar	LCP update	\$100,000		\$100,000	\$0	\$100,000	\$100,000
Total Requested		\$1,850,113	\$1,105,046	\$2,955,159	\$1,000,000	\$1,015,750	\$2,015,750

All proposals are available via hyperlinks in [Attachment A](#), and on the Coastal Commission's website at: <http://www.coastal.ca.gov/lcp/lcpgrantprogram.html>. Due to the length of the proposal packets, Commission staff opted to provide the proposals in an electronic format, and to provide detailed descriptions of the grant proposals recommended for funding in [Section VII](#). Paper copies of the grant proposals are available upon request. **If any Commissioners or members of the public would like paper copies of the grant proposals, please let Commission staff know immediately.**

All of the recommended awards are consistent with the purpose of the LCP grant program and the Commission's adopted priorities and criteria. They all are supported by adopted resolutions of the local governing bodies, indicating support for completion of the LCP planning work and all contain tasks for public participation and early coordination with Coastal Commission staff. **The jurisdictions with recommended Coastal Commission and OPC awards are contributing an estimated cumulative total of over \$10 million in leveraged funds from other grants, locally allocated funds, and in-kind services.**

Three grant proposals are not recommended for funding: County of Monterey, County of San Luis Obispo, and County of Ventura. These applications provided compelling funding requests but given the limited amount of funding, Commission staff was not able to recommend grant awards for all proposals received. To achieve greater likelihood of successful LCP certification, Commission staff recommends the Commission fully-fund the highest ranked proposals as much as possible (in combination with OPC funds). There are insufficient funds to provide awards for all grant proposals. All applications represent critical planning work for the Commission and had sufficient funds been available, the Commission staff would have recommended funding for all proposals.

GRANT CONDITIONS

All of the recommended awards include conditions for the contract that will identify required project management, progress reporting, and interim and final deliverables. Staff is also recommending a condition for all grant awards that will allow the Executive Director or his designee to cancel the contract and re-allocate any unspent funds to one or more of the other approved grantees whose grant was not fully funded.

Each grantee is required to submit a revised work program and budget, reflecting any grant conditions and with the additional detail needed to execute the contract. In order to assist the Commission in carrying out Strategic Plan Action Item 4.3.1, staff will condition grants to require grant recipients to submit LCP documents and maps in both paper and editable digital format. All grants with tasks related to sea-level rise planning have a condition that requires the jurisdictions to use the Commission's Draft Sea-Level Rise Policy Guidance, and the final version when adopted by the Commission, and to coordinate sea-level rise preparedness work with other jurisdictions where appropriate.

In addition, all grants have a condition that the planning work be performed in accordance with the State of California's climate change principles, as outlined in the [*Safeguarding California Plan*](#)⁴ (2014) and as directed by the Ocean Protection Council's Resolution on Implementation of the Safeguarding California Plan (2014). Some recommended awards may include additional conditions related to specific work program tasks. [Section VIII](#) provides a summary of post-award contract requirements.

GRANT ADMINISTRATION

The Commission staff involvement in ongoing coordination with and input to local governments on these LCP planning efforts is a critical element for project success. When final grant awards are made and contracts executed, a Commission staff person will be assigned to work with each grantee as the LCP project proceeds. It is only with the augmentation of the Commission's FY 2013/2014, 2014/2015, and 2015/2016 budget to add staff to District offices that this level of coordination and support can be assured. If the Commission's budget for additional staff is not continued in future years, staff support for ongoing planning work with local governments and for these grant projects will necessarily be reduced.

In addition, the California Natural Resources Agency Deputy Secretary and OPC Executive Director Catherine Kuhlman have requested that the Coastal Commission administer the FY2014/2015 grant projects in coordination with the Coastal Commission LCP Local Assistance Grant Program. As described in Exhibit 1, OPC management is recommending that the OPC approve entering into an interagency agreement to transfer administration of the FY2014/2015 grant program to the Coastal Commission, and to provide 15% of the remaining OPC grant funds for this second round of grants to the Coastal Commission to cover grant administration costs. For more information, see Item W6c-11-2014.

Management of the FY 2014/2015 OPC grant program will result in significantly more contract management work and responsibility for Commission staff. The funds will support additional contract management staff at the Commission to complete this additional work. The funds would cover approximately half of a personnel year for three years for a Coastal Program Analyst II position or equivalent position necessary to conduct this work.

A single grant administrator for both grant programs will allow jurisdictions that receive grants from both the OPC and the Coastal Commission to develop one work program and to execute a single contract with the Coastal Commission for both awards. This will streamline the grant execution process, for local governments, and increase the ability of the Coastal Commission to track progress on grant implementation and monitor projects for success.

⁴ California Natural Resources Agency 2014. Available. http://resources.ca.gov/docs/climate/Final_Safeguarding_CA_Plan_July_31_2014.pdf. Accessed 19 September 2014.

TABLE OF CONTENTS

I. MOTION AND RESOLUTION.....	7
II. REQUIREMENTS AND CONDITIONS FOR ALL GRANTS.....	7
III. GRANT SPECIFIC REQUIREMENTS AND CONDITIONS	9
1) Humboldt County	9
2) City of Trinidad	9
3) City and County of San Francisco.....	9
4) City of Monterey	9
5) City of Morro Bay	10
6) County of Santa Barbara	10
7) City of Oxnard.....	10
8) City of Santa Monica.....	10
9) City of Los Angeles.....	10
10) City of Newport Beach.....	10
11) County of San Diego	11
12) City of Carlsbad.....	11
IV. INTRODUCTION	11
V. PROGRAM DESCRIPTION.....	11
Coordination of Coastal Commission and OPC Grants.....	12
Grant Administration	12
VI. REVIEW PROCESS.....	13
OPC Staff Recommendations	14
VII. AWARD RECOMMENDATIONS FY 2014/2015.....	14
1) Humboldt County	15
2) City of Trinidad	17
3) City and County of San Francisco.....	19
4) City of Monterey	21
5) City of Morro Bay	23
6) County of Santa Barbara	25
7) City of Oxnard.....	27
8) City of Santa Monica.....	29
9) City of Los Angeles.....	31
10) City of Newport Beach.....	34
11) County of San Diego	36
12) City of Carlsbad.....	37
VIII. GRANT AWARD ADMINISTRATION.....	39
ATTACHMENT A. COMPLETE LIST OF PROPOSALS	41
ATTACHMENT B. EVALUATION CRITERIA ADOPTED BY COASTAL COMMISSION ON AUGUST 14, 2013.....	42
ATTACHMENT C. PROPOSAL RANKINGS BASED ON CRITERIA	44
EXHIBITS	
EXHIBIT 1. Memorandum from OPC	
EXHIBIT 2. Letter of Support	

I. MOTION AND RESOLUTION

Motion:

*I move that the Commission **approve** the twelve grant awards identified in the CCC Staff Recommendation column of Table 1 of this staff recommendation and authorize the Executive Director or his designee to enter into contracts with the grantees for allocation of these funds, subject to the requirements and conditions set forth in the staff recommendation. This approval shall only be effective, however, if the Ocean Protection Council approves the seven grants listed in the Ocean Protection Council Staff Recommendation column of Table 1.*

Staff recommends a **YES** vote on the foregoing motion. Passage of this motion will result in approval of the twelve grant awards identified in Table 1 and the Commission authorizing the Executive Director or his designee to enter contracts with the grantees for distribution of the grant funds, only if the OPC approves the seven grants listed in the OPC Staff Recommendation column of Table 1. If the OPC does not approve the grants listed in Table 1, Commission staff will bring a new staff recommendation and proposed allocation of grant funds to the Commission for a vote in early 2015. The motion passes only by affirmative vote of a majority of the Commissioners present.

Resolution:

The Commission hereby approves the twelve grant awards identified in the CCC Staff Recommendation column of Table 1 of this staff recommendation and authorizes the Executive Director or his designee to enter into contracts with the grantees for allocation of these funds, subject to the requirements and conditions set forth in the staff recommendation, and such approval and authorization is only effective if the Ocean Protection Council approves the seven grants listed in the Ocean Protection Council Staff Recommendation column of Table 1.

II. REQUIREMENTS AND CONDITIONS FOR ALL GRANTS

All grant contracts will contain provisions to ensure successful implementation of the work program. Specifically, contracts will include requirements and conditions regarding the project schedule, progress reporting, reimbursement procedures, and stipulations and grant withholdings for projects not completed within the grant time period. The general contract requirements and conditions are explained in detail in [Section VIII](#), Grant Administration. In addition to the general contract requirements and conditions, all grant projects will include the following conditions:

1. Prior to the Executive Director's determination and reporting of certification pursuant to Section 13544 of the California Code of Regulations of a grant-funded LCP project, grantees shall submit LCP documents and maps in both paper and editable digital format to the Coastal Commission.
2. Grantees shall use the Coastal Commission's [Draft Sea-Level Rise Guidance document](#) on an interim basis until the Final Guidance is adopted by the Commission in late 2014 or

early 2015, and then shall use the Final Sea-Level Rise Guidance to inform the development of sea-level rise impact assessments, vulnerability assessments, and LCP Land Use Plan and Implementation Plan completion or updates.

3. Sea-level rise work completed under the grant program shall be coordinated regionally to the extent feasible with other jurisdictions and entities working on sea-level rise projects within the same county or broader regional area relevant for sea-level rise adaptation, such as the watershed, littoral cell, or area with similar geologic characteristics. Coordination includes early coordination meetings among the different entities, sharing of technical analyses and lessons learned, and consideration of regional adaptation policies.
4. Grant-funded work shall also be guided by the [Safeguarding California Plan for Reducing Climate Risk](#)'s recommended climate change preparedness actions and principles,⁵ as listed below, and as described in the adopted [2014 Ocean Protection Council Resolution](#) to support implementation of the *Safeguarding Plan*.⁶ The *Plan* states that projects or programs implemented with state funds should:
 - Encourage innovative design of new structures and infrastructure in areas vulnerable to sea-level rise, storms and erosion and priority should be given to green or nature-based solutions that use natural processes and habitats to reduce risk from flooding and erosion;
 - Reduce risk from climate impacts to the coast and ocean, by implementing the *Safeguarding Plan*'s recommendation to incorporate climate risk considerations into all relevant decision-making, including related to infrastructure, in such a way that it:
 - Encourages iterative approaches;
 - Protects California's most vulnerable populations;
 - Achieves multiple benefits from efforts to reduce climate risks and prioritizes green infrastructure solutions;
 - Integrates climate risk reduction with emissions reductions to the fullest extent possible; and
 - Develops metrics and indicators to track progress on efforts to reduce climate risk.
 - Adhere to the *Safeguarding Plan* principles:
 - Use the best available science to identify risks and adaptation strategies;

⁵ California Natural Resources Agency 2014. Available. http://resources.ca.gov/docs/climate/Final_Safeguarding_CA_Plan_July_31_2014.pdf. Accessed 19 September 2014.

⁶ Ocean Protection Council 2014. Available: http://www.opc.ca.gov/webmaster/ftp/pdf/agenda_items/20140827/Item5 OPC Aug2014 Exhibit 1 Safeguarding Resolution ADOPTED.pdf. Accessed 19 September 2014.

- Understand that an effective strategy for preparing for climate risks should evolve as new information is available;
- Involve all relevant stakeholders;
- Establish and maintain strong partnerships across all levels of government, tribes, businesses, landowners, and non-governmental organizations;
- Give priority to strategies that also achieve benefits other than climate risk reduction benefits, including additional benefits to public health, the economy, environmental justice, and conservation of natural resources; and
- Ensure that strategies to reduce climate risk are coordinated, to the extent possible, with the state's efforts to reduce GHG emissions and other local, national and international efforts.

III. GRANT SPECIFIC REQUIREMENTS AND CONDITIONS

1) HUMBOLDT COUNTY

1. By February 1, 2015, the grantee shall submit a revised work program and budget that reflects an award of \$35,000, focusing on tasks related to tsunami safety-planning and industrial/coastal dependent mapping and policy assessment, coordination with Coastal Commission and other agencies, and public outreach and engagement. The work program and budget shall include the necessary detail to complete contract execution, and also reflect any OPC award as approved by the OPC at the Council's December hearing.

2) CITY OF TRINIDAD

1. By February 1, 2015 the grantee shall submit a revised work program and budget with the necessary detail to complete contract execution.

3) CITY AND COUNTY OF SAN FRANCISCO

1. By February 1, 2015, the grantee shall submit a revised work program and budget that reflects an award of \$13,000, focusing on Task 3, Policy Development, and that does not include the costs of facility rental. The City should use matching funds to cover the \$2,000 requested for facility rental. The work program and budget shall include the necessary detail to complete contract execution, and also reflect any OPC award as approved by the OPC at the Council's December hearing.

4) CITY OF MONTEREY

1. By February 1, 2015, the grantee shall submit a revised work program and budget that reflects an award of \$35,000, focusing on Task 6, Develop Policies, Programs, and Implementation. The work program and budget shall include the necessary detail to complete contract execution, and also reflect any OPC award as approved by the OPC at the Council's December hearing.

5) CITY OF MORRO BAY

1. By February 1, 2015 the grantee shall submit a revised work program and budget with the necessary detail to complete contract execution.

6) COUNTY OF SANTA BARBARA

1. By February 1, 2015, the grantee shall submit a revised work program and budget that reflects an award of \$8,000, focusing on Task 3, Coastal Hazard Amendments Certification. The work program and budget shall include the necessary detail to complete contract execution, and also reflect any OPC award as approved by the OPC at the Council's December hearing.

7) CITY OF OXNARD

1. By February 1, 2015, the grantee shall submit a revised work program and budget that reflects an award of \$40,000, focusing on Task 5.1, Update Oxnard LCP. The work program and budget shall include the necessary detail to complete contract execution, and also reflect any OPC award as approved by the OPC at the Council's December hearing.

8) CITY OF SANTA MONICA

1. By February 1, 2015, the grantee shall submit a revised work program and budget that reflects an award of \$225,000, and includes a reduction of \$25,000 in Task 2, Data Gathering, Research, LUP Update. The work program and budget shall include the necessary detail to complete contract execution.

9) CITY OF LOS ANGELES

1. By February 1, 2015, the grantee shall submit a revised work program and budget that reflects an award of \$250,000, focusing on Task 2.2 Venice Specific Plan Amendment Recommendations, 2.3 Venice Community Plan (Land Use Plan) Amendment Recommendations, and Task 2.6 Environmental Analysis. The work program and budget shall include the necessary detail to complete contract execution.
2. The work program shall be revised to reflect a deliverable of submittal of a final LUP and draft LIP to the Coastal Commission.
3. As part of the LUP Amendment, the City of Los Angeles shall include, as part of Task 2.6 Environmental Analysis, an assessment of issues related to protection of community character, redevelopment, and public access to the shoreline, and shall update the LUP and IP with policies and specific standards as necessary based on the results of the assessment.

10) CITY OF NEWPORT BEACH

1. By February 1, 2015, the grantee shall submit a revised work program and budget that reflects an award of \$67,000, and includes a reduction of \$20,540 in Task 1, Community Outreach. The work program and budget shall include the necessary detail to complete contract execution.

11) COUNTY OF SAN DIEGO

1. By February 1, 2015 the grantee shall submit a revised work program and budget with the necessary detail to complete contract execution.

12) CITY OF CARLSBAD

1. By February 1, 2015, the grantee shall submit a revised work program and budget that reflects an award of \$48,000, focusing on Task 8, Draft Local Coastal Program. The work program and budget shall include the necessary detail to complete contract execution, and also reflect any OPC award approved by the OPC at the Council's December hearing.

IV. INTRODUCTION

The Budget Act of 2014 provides an appropriation of \$1 million in Local Assistance funds for Coastal Commission grants to local governments to support Local Coastal Program (LCP) planning. There is a priority need to complete LCPs that have not yet been certified and to update older LCPs that may no longer reflect current circumstances and new scientific information, including addressing the effects of climate change and sea-level rise. The Coastal Commission's LCP Local Assistance Grant Program is one of several grant programs available for local governments to update LCPs and to plan for climate change. The Ocean Protection Council (OPC), in coordination with the State Coastal Conservancy (SCC) and the Coastal Commission, is awarding approximately \$2.5 million in grants to update LCPs to address sea-level rise. OPC awarded \$1.3 million in November 2013, and will award the remaining funds in December 2014. In addition, the SCC awarded \$1.5 million as part of its Climate Ready Grant Program in January 2014, and will award an additional \$1.5 million in Climate Ready funds for implementation of climate change adaptation projects in early 2015.

V. PROGRAM DESCRIPTION

The goal of the Coastal Commission LCP Local Assistance Grant Program is to support local government efforts to complete certification of a new LCP or to update an existing LCP to reflect new information, changed conditions, and emerging issues, with an emphasis on addressing climate change and sea-level rise, consistent with the Coastal Act. This funding helps support the Coastal Commission's adopted Strategic Plan goal to strengthen the LCP Program (Goal 4). Goal 4 places high priority on updating and certifying LCPs, and states that the LCP Program is "the core implementation mechanism of the Coastal Act and the area most in need of increased investment to assure long run success in program implementation."⁷ The grants provide much-needed funds to local governments to complete this critical planning work. While most of the coast (approximately 87% of the geographic area) is governed by a certified LCP, there are some remaining uncertified areas. When these areas become certified, the local government will assume responsibility for issuing most coastal development permits in these areas.

⁷ California Coastal Commission, Strategic Plan 2013-2018, Approved April 2013, pg 15. Accessed on 10/2/2014 at <http://documents.coastal.ca.gov/reports/2013/4/F9a-4-2013.pdf>.

In addition, many of the LCPs that were certified in the 1980s and 1990s are out of date and would benefit from updates to reflect changed conditions, new information and knowledge, and new programs and policies, especially those related to climate change and sea-level rise. Updated LCPs provide more certainty for economic development and enable stronger coastal resource protection in light of current environmental conditions and other factors. Also, many important public access, coastal resource protection, and priority coastal development issues remain to be more comprehensively addressed by an updated LCP in these areas, as contemplated by the Coastal Act.

On August 14, 2013, the Commission adopted priorities and evaluation criteria for implementing the LCP Local Assistance Grant Program to reflect this goal [see <http://documents.coastal.ca.gov/reports/2013/8/W31b-8-2013.pdf> and [Attachment B](#) for a description of the criteria as provided in the LCP Local Assistance Grant Program application announcement.] In brief, the evaluation criteria include: Public Benefit/Significance, Need and Extent, Addressing the Effects of Climate Change, Likelihood of Success/Effectiveness, Workload, and Project Integration/Leverage/Matching Funds.

COORDINATION OF COASTAL COMMISSION AND OPC GRANTS

The OPC LCP SLR grant program provides funds to support the update of LCPs and other authorized plans under the Coastal Act to address sea-level rise. Activities that are eligible to receive funding under the OPC grant program include modeling, vulnerability assessments, adaptation planning, and policy development. Funds can be used entirely for technical analysis of sea-level rise impacts or to fund development of sea-level rise preparedness policies and work that would lead to an update and certification of a LCP or other authorized plan under the Coastal Act. Since both the Coastal Commission's LCP Local Assistance and the OPC's LCP SLR Grant Programs share the objective of certifying and updating LCPs, staff from the OPC and Coastal Commission developed a joint application and coordinated the review of the applications. On the application form, applicants could designate which program they were applying to or could apply to both programs using the form. The joint application included one work program and joint budget, which helped simplify the application process for applicants and also helped the review committee understand how funds could be allocated to support a single project without duplication in the use of these funds.

GRANT ADMINISTRATION

The OPC has requested that the Coastal Commission administer the second round of OPC grant projects in coordination with the Coastal Commission LCP Local Assistance Grant Program. As described in Attachment A, the OPC staff will recommend that the OPC approve entering into an Interagency Agreement to transfer administration of the second round of grants to the Coastal Commission, and to provide a total of 15% of \$1,195,000 (the amount of OPC grant funds available for the second round of grants) for grant administration. (See also Item W6c-11-2014).

Management of the second round of OPC grants will result in significantly more contract management work for Commission staff. The funds will support additional contract management staff at the Commission to complete this additional work. The funds would cover approximately

half of a personnel year for three years for a Coastal Program Analyst II position or equivalent position necessary to conduct this work.

A single grant administrator for both grant programs will allow jurisdictions that receive grants from both the OPC and the Coastal Commission to develop one work program and to execute a single contract with the Coastal Commission for both awards. Development of the OPC work programs and sea-level rise vulnerability assessment details will require close coordination with the Commission's technical staff and District staff. For the joint-funded projects, Commission administration will allow this coordination to occur seamlessly with the development of the Commission work programs. This will streamline the grant execution process, simplify reporting and invoicing requirements for local governments, and increase the ability of the Coastal Commission to track progress on grant implementation and monitor projects for success. This will also prevent any project delays that could occur if the grant agreements for both programs were not executed at the same time.

VI. REVIEW PROCESS

A team of Commission staff reviewed the joint grant applications with input from District Managers. Commission staff relied on the Commission-approved criteria when reviewing applications. As part of the review, staff assigned a low, medium, or high value (low=1, medium=2, and high=3) to each proposal for each of the criteria. Staff added the assigned values for a total overall score for each application. The applications were then ranked according to the total score, and sorted into high, medium, and low priority for funding. For the application rankings, see [Attachment C](#) and for the full review sheets, see Exhibit 1. Staff recommend funding all high applications and the highest of the medium applications. All 16 applications submitted for funding represent critical and necessary LCP planning work. Had adequate funding been available, Commission staff would have recommended funding all applications. [Table 1](#) shows the review team recommendations.

The Commission staff review team also worked with Coastal Commission technical staff (i.e. CCC Senior Coastal Engineer and Staff Geologist) to review the sea-level rise analysis components of the proposals. In addition, the team factored in District staff input regarding local planning processes underway that would indicate where likelihood of success and project results could be achieved within the specified grant period.

In addition, Commission staff consulted with staff representatives from the OPC and Coastal Conservancy to coordinate the OPC LCP Sea-Level Rise grant awards, which are scheduled to be awarded by the OPC in December 2014. The joint-application process provided the opportunity for the OPC and Coastal Commission staff to work together to develop staff recommendations to their respective Council and Commission that maximized the distribution of OPC and Coastal Commission grant funds. In some cases, Coastal Commission staff recommends that the OPC fund more of the sea-level rise related tasks that meet the OPC grant program criteria than was requested in the original proposals in order to maximize the awards for the highest-ranked projects. This frees up more Coastal Commission funds for the Commission to support highly-ranked proposals from local governments that only requested Coastal Commission funds.

The OPC staff fully support the recommendations provided in this staff report. The OPC and Coastal Commission staff recommendations are separate staff recommendations, to be acted on separately by the governing bodies of the respective agencies, based on the adopted criteria of the two grant programs.

OPC STAFF RECOMMENDATIONS

OPC staff recommends the OPC fund seven projects: six projects jointly-funded projects with the Coastal Commission and one project funded solely through OPC grant funds. In [Section VII](#), staff included a brief description of the OPC staff award recommendations for the jointly-funded projects alongside the recommended awards for the Coastal Commission grants. This allows the Commission to understand the full amount of funding that OPC staff and Coastal Commission staff recommend each jurisdiction receive. In addition to the six jointly-funded projects, OPC staff will recommend the OPC approve an award for the City of Del Mar for \$100,000 to fully fund the project. The City of Del Mar application closely fits the OPC grant review criteria. There are significant public beach and coastal resources at risk from sea-level rise, the City is committed to completing a LCP amendment within the two-year grant period, and the project is integrated with regional efforts. For these reasons, the review committee staff anticipates a high likelihood of success. The OPC staff recommendations and review process will be described fully in the OPC staff report, which will be released for public review in early November.

VII. AWARD RECOMMENDATIONS FY 2014/2015⁸

Commission staff recommends the Commission award 12 grants for a total of \$1,000,000. [Table 1](#) on page 3 and the following section provides a summary of the Coastal Commission staff recommendations. Three grant proposals are not recommended for funding: County of Monterey, County of San Luis Obispo, and County of Ventura. These applications provided compelling funding requests but given the limited amount of funding, Commission staff was not able to recommend grant awards for all proposals received. To achieve greater likelihood of successful LCP certification, Commission staff recommends the Commission fully-fund the highest ranked proposals as much as possible (in combination with OPC funds). This resulted in insufficient funds to provide awards for all grant proposals. All applications represent critical planning work for the Commission and had sufficient funds been available, the Commission staff would have recommended funding for all proposals.

⁸ In all grant applications leveraged funds includes: grantee funding, grantee in-kind contributions, and other grant sources.

1) HUMBOLDT COUNTY

Project Title: Humboldt County Update to the Humboldt Bay Area Plan

Project Location: Humboldt County

Project Timeline: March 1, 2015 to February 28, 2017

	Amount Requested	Recommended Award
CCC	\$100,000	\$35,000
OPC	\$25,000	\$90,000
Total	\$125,000	\$125,000

Grantee's Leveraged Funds: \$833,900

Leveraged funds include \$4,900 in applicant funds from Mitigation Fee Revenue, approximately \$20,000 in staff time, approximately \$30,000 in prior Coastal Commission grant funds, \$250,000 in prior funding for the Humboldt Bay Sea-Level Rise Study, \$350,000 in prior Department of Water Resources funding for General Plan background document preparation, and approximately \$150,000 in staff costs associated with development of General Plan Update tasks related to the Humboldt Bay Area Plan.

Conditions of Approval

In addition to General Requirements, staff recommends the following specific conditions on the Humboldt County grant award:

1. By February 1, 2015, the grantee shall submit a revised work program and budget that reflects an award of \$35,000, focusing on tasks related to tsunami safety-planning and industrial/coastal dependent mapping and policy assessment, coordination with Coastal Commission and other agencies, and public outreach and engagement. The work program and budget shall include the necessary detail to complete contract execution, and also reflect any OPC award as approved by the OPC at the Council's December hearing.

Grant Proposal Summary

The grant proposal includes a comprehensive update to the Humboldt Bay Area Plan. To complete the project, the County will: coordinate with regional agencies and organizations; establish baseline environmental and community conditions; complete a sea-level rise risk assessment; identify policy options; and update and submit its LCP for certification. The County will coordinate closely with the Coastal Commission, the Humboldt Bay Harbor, Recreation and Conservation District, and the Cities of Eureka and Arcata and to complete the LCP update.

The proposal includes the following components:

- Task 1: Regional Coordination
- Task 2: Baseline conditions and sea-level rise sensitivity analysis
- Task 3: Policy Options
- Task 4: Achieve certification of the updated LCP

Discussion

Humboldt County has significant coastal resources of statewide significance, including the second largest coastal estuary in the state, agricultural lands, timberlands, old growth redwood

forests, tidal marshes, freshwater and riparian wetlands and other environmentally sensitive habitat areas along the Humboldt Bay and the Eel River estuaries, and several freshwater and brackish lagoons (such as Big Lagoon, Stone Lagoon, and Freshwater Lagoon). The County has over 120 miles of coastline (not including an additional 100 miles of shoreline associated with Humboldt Bay) with numerous public access areas and expansive beaches, including Gold Bluffs Beach in Prairie Creek Redwoods State Park, Moonstone County Park, Little River State Beach, Mad River Beach County Park, Mal'el Dunes, and Clam Beach County Park (one of only three areas along the California coast with significant populations of Pacific razor clams). In addition, due to the decline in the timber economy and other changing circumstances in the area, the County has significant tracts of underutilized industrial lands. The area is also especially vulnerable to sea-level rise, with the highest rate of relative sea-level rise on West Coast, and to tsunami hazards, due to its proximity to the Cascadia Subduction Zone, which has the potential for large earthquakes. Resources at risk include the most significant expanse of eelgrass beds in the state, tidal and freshwater marshes, agricultural lands, wastewater treatment plants, significant public utility and community services infrastructure, large sections of Highway 101, energy facilities, and commercial and residential areas.

The Humboldt Bay Area Plan update can leverage the existing efforts in the Bay to prepare for sea-level rise, including the efforts to provide locally-relevant sea-level rise maps by the Sea-Level Rise Adaptation Planning Working Group. Also, given the grant-funded work underway at the Cities of Arcata and Eureka to update their LCPs to address sea-level rise, there is regional momentum to complete a LCP Sea-Level Rise Amendment. Grant funds will allow the County to more actively participate in regional adaptation planning, and to complete the County Sea-Level Rise Amendment work concurrently with the cities in the Humboldt Bay Area. There are several unincorporated communities and critical assets around the Bay, including King Salmon (and the Humboldt Bay Power Plant), Fields Landing, Samoa, Fairhaven, Manila, that the comprehensive update would address (which are not covered in the scope of the Arcata and Eureka LCP updates). In addition, the significantly changed conditions in the Humboldt Bay Area warrant an assessment of the continued need for land zoned as industrial and coastal dependent. In FY2013/2014, the Commission awarded Humboldt County approximately \$10,000 of a \$29,000 grant award to fund the development of policies to address interim uses of these areas. The County is interested in potentially re-zoning some of these areas to reflect changed conditions, and the Commission staff has indicated that a market analysis study on the demand for industrial and coastal dependent uses should be completed prior to such an update. This grant award would allow the County to pursue this work.

Award Modifications

Commission staff and OPC staff recommend full funding of the Humboldt County grant award through a combination of OPC and Coastal Commission grant funds. **Staff recommends the Commission authorize a grant of \$35,000 to fund completion of the tsunami safety-planning and industrial/coastal dependent mapping and policy assessment.** The OPC staff recommends the OPC award a grant of \$90,000 to fund completion of the sea-level rise amendment for the Humboldt Bay Area, including tasks 1.5, 2.2, and 3.1, and any other portions of the work program relating to sea-level rise.

The outcome of this grant is expected to be submittal of a LCP amendment for Commission certification to address tsunami safety planning and industrial/coastal-dependent land use around Humboldt Bay.

2) CITY OF TRINIDAD

Project Title: City of Trinidad LCP Update

Project Location: Humboldt County

Project Timeline: February 1, 2015 to February 1, 2017

	Amount Requested	Recommended Award
CCC	\$80,000	\$80,000
OPC	\$0	\$0
Total	\$80,000	\$80,000

Grantee's Leveraged Funds: \$2,800,000

Leveraged funds consist of \$200,000 in funding to develop the Tsurai Management Plan, \$50,000 from a Proposition 50 Integrated Coastal Watershed Planning Grant for the City's Planning Area (2006), and \$2.5 million of Proposition 84 grant funds for stormwater improvements (ongoing).

Conditions of Approval

In addition to General Requirements, staff recommends the following specific conditions for the City of Trinidad grant award:

1. By February 1, 2015 the grantee shall submit a revised work program and budget with the necessary detail to complete contract execution.

Grant Proposal Summary

The City of Trinidad proposal includes certification of an Area of Deferred Certification (ADC), and a comprehensive update of its LCP to address climate change and other changed conditions. The project will include tribal consultation, coordination with the Coastal Commission, a needs assessment, incorporation of the Tsurai Management Plan into the Land Use Plan, development of a Planning Area response to climate change, update of the Implementation Plan, and City adoption and submittal of the LCP.

The proposal includes the following components:

- Task 1. Stakeholder coordination and consultation
- Task 2. Tribal Consultation and incorporation of Tsurai Management Plan into LCP
- Task 3. Development of policies and regulations for the Trinidad Harbor Area of Deferred Certification
- Task 4. Perform Needs Assessment for Implementation Plan
- Task 5. Conduct Climate Change Planning
- Task 6. Update LCP
- Task 7. Grant Administration

Discussion

The City of Trinidad, although a small area, has significant scenic, cultural, and environmentally sensitive resources, including boating, pier, and harbor uses. These resources are demonstrated by Trinidad's designation as a Critical Coastal Area, an Area of Special Biological Significance, and a State Water Quality Protection Area. The City of Trinidad is highly vulnerable to climate change. Much of the City is located on a marine terrace with steep, unstable bluffs that border the south and west sides of the City, and are at significant risk of bluff erosion. Increased erosion and flooding from sea-level rise and storms is anticipated to lead to increased bluff instability, which could expose cultural artifacts and restrict public access along the shoreline. In addition, sea-level rise is expected to lead to saltwater intrusion into septic systems and loss of function of stormwater outfalls. These climate impacts could also lead to a loss of coastal ecosystems, and other impacts to cultural resources.

Trinidad's LCP was certified in 1980, making it the oldest in the state. In addition to being out of date, the LCP has inconsistencies. A comprehensive update will reduce workload for the Commission. The City is committed to the update, and has started the update process, but without grant funds, the update will proceed very slowly. Grant funds will help the update occur in a timely manner and will increase the likelihood of success.

Award Recommendation

The staff recommends the Commission authorize a grant of \$80,000 to fund the work program in full.

The outcome of this grant is expected to be submittal of a LCP Update and new LCP for the Trinidad Harbor ADC for Commission certification.

3) CITY AND COUNTY OF SAN FRANCISCO

Project Title: San Francisco Local Coastal Program Amendment

Project Location: San Francisco County

Project Timeline: February 1, 2015 to April 1, 2017

	Amount Requested	Recommended Award
CCC	\$94,573	\$13,000
OPC	\$91,046	\$160,750
Total	\$185,619 ⁹	\$173,750

Grantee's Leveraged Funds: \$398,792

These leveraged funds consist of \$398,792 in in-kind services. Project builds on the 2012 Ocean Beach Master Plan, and is integrated with the San Francisco Public Utilities Commission (SFPUC)'s sea-level rise vulnerability analysis, and the Federal Emergency Management Agency (FEMA)'s sea-level rise pilot study, which is being completed through FEMA's California Coastal Analysis and Mapping Project Open Pacific Coast Study.

Conditions of Approval

In addition to General Requirements, staff recommends the following specific conditions for the City and County of San Francisco grant award:

1. By February 1, 2015, the grantee shall submit a revised work program and budget that reflects an award of \$13,000, focusing on Task 3, Policy Development, and that does not include the costs of facility rental. The City and County should use matching funds to cover the \$2,000 requested for facility rental. The work program and budget shall include the necessary detail to complete contract execution, and also reflect any OPC award as approved by the OPC at the Council's December hearing.

Grant Proposal Summary

The City and County of San Francisco is requesting grant funding to complete a LCP Amendment to address sea-level rise and implement the Ocean Beach Master Plan. The project includes development of a LCP Amendment to implement the vision from the Ocean Beach Master Plan, as well as a more general set of policies to address sea-level rise adaptation throughout the San Francisco coastal zone based on FEMA and San Francisco Public Utilities Commission sea-level rise and coastal hazard studies. The LCP Amendment will include an extensive public outreach component, a review of existing data and assessments on sea-level rise, policy development, and submittal of a LCP Amendment to the Coastal Commission.

The proposal includes the following components:

- Task 1: Public and Agency Engagement
- Task 2: Existing Data and Analyses

⁹ Note: In supplemental information provided in response to staff follow-up questions, the City and County of San Francisco reduced their request from \$98,475 from both the OPC and Coastal Commission to \$94,573 from the Coastal Commission and \$91,046 from the OPC.

- Task 3: Policy Development
- Task 4: Approval Process

Discussion

San Francisco has 6 miles of coastal zone, the majority of which is publicly owned. The area includes Ocean Beach, the Great Highway, Lands End, Sutro Heights Park, Golden Gate Park, the San Francisco Zoo, Lake Merced and Fort Funston. Although a small area, it is a significant coastal access destination with over 300,000 visitors per year. The area also includes environmentally sensitive habitat and critical public infrastructure. The City and County proposes to increase public access, restore and enhance habitat areas, and ensure continued function of critical facilities through erosion management, managed retreat, beach nourishment, and other innovative strategies, which should be transferable to other jurisdictions.

San Francisco's LCP is 30 years old and is in great need of an update to address erosion at Ocean Beach, as well as future impacts due to sea-level rise, which were not planned for in the current LCP. The existing shoreline was built on fill and has experienced severe erosion in some areas, which has restricted public access, led to the loss of the beach parking lot, and also caused periodic closure of the Great Highway, a major roadway adjacent to the beach. Future erosion due to sea-level rise will exacerbate these issues and further put at risk habitat, recreational facilities, and critical infrastructure, including the Oceanside Water Pollution Control Plant, and the Great Highway.

San Francisco anticipates that this targeted LCP Sea-Level Rise Amendment will inform a later comprehensive amendment to the LCP. The update will reduce Commission workload. Although San Francisco's coastal zone generates few permits for the Commission, these items have presented challenging difficult-to-resolve issues and have taken up significant staff time due to the general, outdated policy language in the LCP that doesn't clearly address current erosion issues. Updating the LCP should reduce work load for North Central Coast District staff, Federal Consistency staff, as well as for Commissioners. The likelihood of success is high, since the completion of the Ocean Beach Master Plan has improved coordination among local, state, and federal agencies, as well as with the local community and other stakeholders. The proposal is also integrated with a FEMA sea-level rise pilot project occurring at Ocean Beach and SFPUC's sea-level rise studies.

Award Recommendation

Commission staff and OPC staff recommend that San Francisco receive a total of \$173,750 in funding for the project from a combination of Coastal Commission and OPC funds. **Specifically, staff recommends the Commission authorize a grant of \$13,000 to fund Task 3, Policy Development.** OPC staff recommends the OPC award a grant of \$160,750, with a reduction in Task 2 of \$11,869 to reflect the extensive existing information that exists for the planning area.

The outcome of this grant is expected to be submittal of a LCP amendment for Commission certification to address sea-level rise and to implement the Ocean Beach Master Plan.

4) CITY OF MONTEREY

Project Title: City of Monterey Local Coastal Plan

Project Location: County of Monterey

Project Timeline: May 1, 2015 to April 30, 2017

	Amount Requested	Recommended Award
CCC	\$150,000	\$35,000
OPC	\$100,000	\$200,000
Total	\$250,000	\$235,000

Grantee's Leveraged Funds: \$75,000

Leveraged funds include \$50,000 in in-kind staff time and \$25,000 from the City's General Fund.

Conditions of Approval

In addition to General Requirements, staff recommends the following specific conditions on the City of Monterey grant award:

1. By February 1, 2015, the grantee shall submit a revised work program and budget that reflects an award of \$35,000, focusing on Task 6, Develop Policies, Programs, and Implementation. The work program and budget shall include the necessary detail to complete contract execution, and also reflect any OPC award as approved by the OPC at the Council's December hearing.

Grant Proposal Summary

The City of Monterey is requesting funds for the development of a LCP for certification. The City proposes to consolidate the five segments (Cannery Row, Harbor, Del Monte Beach, Skyline, and Laguna Grande) and adopt one Land Use/ Implementation Plan. The project includes public outreach (4 community workshops); assessment of risks from sea-level rise, tsunamis, flooding, and fire; development of a sea-level rise strategy; and submittal for certification.

The proposal includes the following components:

- Task 1: Identify Stakeholders and Develop Outreach Program
- Task 2: Identify Existing Conditions, Issues
- Task 3: Establish Vision, Goals, Objectives
- Task 4: Develop Alternatives
- Task 5: Refine One Preferred Alternative
- Task 6: Develop Policies, Programs, and Implementation

Discussion

The City of Monterey coastal zone includes significant public access, recreation, commercial fishing, and tourism resources. The City provides numerous visitor-serving amenities, like hotels, restaurants, and the Monterey Bay Aquarium, which receives about 30,000 visitors per

year. In addition, the planning area is adjacent to the Monterey Bay National Marine Sanctuary. Although the Sanctuary is not within the City's jurisdiction, it is directly affected by development and activities that occur in the City's coastal zone. The City's commercial fishing and nature-based tourist economy make it especially vulnerable to the impacts of climate change. As part of the LCP, the City will prepare an adaptation strategy to protect its coastal resources for the future. The City proposes to conduct an extensive public outreach and engagement component as part of the LCP development, including specific outreach to engage the public on planning for sea-level rise and climate change.

The City of Monterey does not have a certified LCP. Although the City, given its small size, does not generate as many permits as other areas in the state, the certification of the LCP will reduce workload for the Commission, since staff currently have to process all permits for the City. In addition, the City proposes to consolidate the five Land Use Plan segments created in the 1980s, which will help increase usability of the LCP and establish a comprehensive LCP for the City planning area. The likelihood of success of completing the LCP is high given the existing planning work underway on shoreline uses. In addition, the project will be able to leverage work occurring in the Monterey Bay region on sea-level rise funded through FY2013/2014 OPC and Climate Ready grants. As part of the LCP development, the City will prepare a series of maps showing key coastal resources, such as fishing areas, tourism, and biotic resources, with adaptation strategies. The approach will be described on the City's website and made available to other communities.

Award Recommendation

Commission staff and OPC staff recommend a total award of \$235,000 for the project from a combination of Coastal Commission and OPC funds, with a \$20,000 reduction in the total amount requested by the City. **Commission staff recommends the Commission authorize a grant of \$35,000 to fund a portion of the total request for Task 6, Develop Policies, Programs, and Implementation.** The OPC staff recommends the OPC award a grant of \$200,000 to fund the remaining tasks. Staff anticipates savings could be found in Task 2.2 Draft Existing Conditions Report, and Task 6, to reflect the ability to leverage existing work occurring in the region.

The outcome of this grant is expected to be submittal of a LCP for Commission certification.

5) CITY OF MORRO BAY

Project Title: City of Morro Bay Local Coastal Program Update

Project Location: San Luis Obispo County

Project Timeline: March 1, 2017 to March 30, 2017

	Amount Requested	Recommended Award
CCC	\$147,000	\$147,000
OPC	\$0	\$0
Total	\$147,000	\$147,000

Grantee's Leveraged Funds: \$437,242

Leveraged funds consist of \$111,242 in-kind services, \$76,000 in City funds, and \$250,000 in FY2013/2014 OPC grant funds.

Conditions of Approval

In addition to General Requirements the following are specific conditions on the City of Morro Bay grant award:

1. By February 1, 2015 the grantee shall submit a revised work program and budget with the necessary detail to complete contract execution.

Grant Proposal Summary

The City of Morro Bay is proposing to complete a comprehensive update of the LCP. The work program incorporates and builds from the sea-level rise assessment work funded through a FY2013/2014 OPC grant. The City will use the sea-level rise assessment to develop a detailed climate change vulnerability assessment, which will then inform the LCP. The project also includes development of an issues, constraints, and opportunities study, public engagement, and extensive coordination with the Coastal Commission.

The proposal includes the following components:

- Task 1: Coastal Commission Engagement
- Task 2: Intergovernmental Engagement and Coordination
- Task 3: Public Outreach and Engagement
- Task 4: Sea-level Rise Vulnerability Assessment (funded through FY2013/2014 OPC grant)
- Task 5: Issues, Opportunities, and Constraints Study:
- Task 6: Evaluation
- Task 7: Land Use Planning Documents
- Task 8: Implementing Ordinances
- Task 9: Final Documents

Discussion

The City of Morro Bay planning area, located in central San Luis Obispo County, includes significant, diverse coastal resources, including public access and tourist-serving amenities,

biological resources and sensitive habitat, including the Morro Bay Estuary, commercial fisheries, wastewater treatment plants, and agriculture.

The City of Morro Bay's LCP was certified in 1984 and currently does not adequately protect coastal resources, given out-of-date maps that make it more difficult to locate areas with sensitive coastal resources. The LCP needs to be updated to ensure adequate protection of coastal resources and to correct inconsistencies. The City is in the process of updating the LCP and received grant funds from the OPC to conduct a sea-level rise assessment. The City is motivated to complete the comprehensive update, but without additional grant funds will not likely be able to complete the update. The update will reduce Commission work load by reducing confusion generated from the inconsistencies in the existing LCP, and by reducing conflict by clearly identifying coastal resource areas.

Much of the coastal resources in Morro Bay are vulnerable to sea-level rise. The grant proposal includes preparation of a detailed vulnerability assessment based on the previously-funded sea-level rise assessment, and will use the results to develop a Sea-Level Rise Action Plan, which will be incorporated into the LCP. The Action plan will incorporate the use of nature-based solutions. As part of the update, the City proposes to complete an implementation, monitoring, and reporting plan to track the effectiveness of sea-level rise adaptation actions. This monitoring plan, as well as the examples of adaptation options developed to protect the different types of coastal resources in the City area should be transferable to other jurisdictions.

Given the existing work underway, the ability to leverage FY2013/2014 OPC grant funds, and the focus on early and regular coordination with the Coastal Commission, the likelihood of success for the update is high.

Award Recommendation

Staff recommends the Commission authorize a grant of \$147,000 to fund the work program in full.

The outcome of the grant is expected to be submittal of a comprehensive LCP update to the Commission for certification.

6) COUNTY OF SANTA BARBARA

Project Title: County of Santa Barbara Coastal Hazards LCP Amendment

Project Location: Santa Barbara County

Project Timeline: Coastal Commission: May 1, 2015 to April 30, 2017

OPC: May 1, 2015 to December 30, 2016

	Amount Requested	Recommended Award
CCC	\$64,000	\$8,000
OPC	\$119,000	\$175,000
Total	\$183,000	\$183,000

Grantee's Leveraged Funds: \$317,000

Leveraged funds include \$45,000 in applicant funding, \$200,000 from FY2013/2014 Climate Ready grant, \$22,000 from The Nature Conservancy, and \$50,000 from County Board of Supervisors for Phase I of the County Coastal Resiliency Project.

Conditions of Approval

In addition to General Requirements, staff recommends the following specific conditions on the County of Santa Barbara grant award:

1. By February 1, 2015, the grantee shall submit a revised work program and budget that reflects an award of \$8,000, focusing on Task 3, Coastal Hazard Amendments Certification. The work program and budget shall include the necessary detail to complete contract execution, and also reflect any OPC award as approved by the OPC at the Council's December hearing.

Grant Proposal Summary

The County of Santa Barbara submitted two separate proposals for the OPC and Coastal Commission grant programs. The Coastal Commission proposal includes development of a LCP amendment to address adaptation to coastal hazards and climate change impacts, based on results of the Coastal Hazard Modeling and Vulnerability Assessment (Coastal Resiliency Project) funded through the Coastal Conservancy. The project also includes further development of the Coastal Resiliency Project decision support system for the entire county. The OPC proposal requests funds to complete sea-level rise modeling and a vulnerability assessment for the North County portion of the planning area.

The proposals includes the following components:

Coastal Commission Proposal:

- Task 1. Community Stakeholder Meeting and Workshops
- Task 2. LCP Amendment and Decision Makers Hearing
- Task 3. Coastal Hazard Amendments Certification
- Task 4. Public Review Process
- Task 5. Final Plan and Certification

OPC Proposal:

- Task 1. Populate Regional Resource Database
- Task 2. Model and Map Multiple Coastal Hazards
- Task 3. Analyze Social, Economic, and Ecological Conditions
- Task 4. Prepare a Coastal Hazard Vulnerability Assessment

Discussion

The County of Santa Barbara has significant coastal resources of statewide significance, many of which are at risk from sea-level rise, including public access areas such as beaches, piers, picnic areas, coastal access parking, and visitor-serving amenities; sensitive habitat areas such as the Goleta Slough, creek mouths, and surrounding estuary; and critical infrastructure, including a wastewater treatment plant and the Santa Barbara Airport.

The Santa Barbara County LCP was certified in 1981, and although it has been partially updated since 1981, it has not been updated to address sea-level rise and future coastal hazards. The proposal includes a targeted update to address these issues. The LCP does not need to be reformatted or reorganized, but there is a great need to plan for issues related to climate change and sea-level rise in the LCP. The grant proposal includes a specific focus on protection of natural resources and the development of nature-based solutions to address risks posed by sea-level rise.

The likelihood of success for the project is high. The County is committed to complete the planning work, and has work underway through the Coastal Resilience Project funded through a FY2013/2014 Climate Ready grant. Given the significant resources at risk from sea-level rise, and the existing work underway, there is momentum and motivation on behalf of the County to complete the LCP update. The project leverages the Climate Ready grant funds as well as Coastal Resilience Ventura work completed by The Nature Conservancy. The modeling, vulnerability assessment, and policy development work completed under the grant will be transferrable to cities within Santa Barbara County and to other similar areas throughout the state.

Award Recommendations

Coastal Commission staff and OPC staff recommend full funding of the Santa Barbara grant request through a combination of OPC and Coastal Commission grant funds. Staff recommends the Commission authorize a grant of \$8,000 to fund Task 3 Coastal Hazard Amendments Certification. OPC staff recommends the OPC fund \$175,000, the remainder of the request.

The final project outcome of this grant is submittal of a LCP Sea-Level Rise Amendment for Commission certification.

7) CITY OF OXNARD

Project Title: Oxnard Sea-Level Rise Analysis and LCP Update

Project Location: Ventura County

Project Timeline: Upon Contract Execution to December 31, 2016

	Amount Requested	Recommended Award
CCC	\$75,000	\$40,000
OPC	\$75,000	\$110,000
Total	\$150,000	\$150,000

Grantee's Leveraged Funds: \$450,000

Leverages \$150,000 from The Nature Conservancy (TNC) for the climate resilience sea-level rise mapping tool/data. City contributes \$150,000 from general fund per year, for a total contribution of \$300,000.

Conditions of Approval

In addition to General Requirements the following are specific conditions on the City of Oxnard grant award:

1. By February 1, 2015, the grantee shall submit a revised work program and budget that reflects an award of \$40,000, focusing on Task 5.1 Update Oxnard LCP. The work program and budget shall include the necessary detail to complete contract execution, and also reflect any OPC award as approved by the OPC at the Council's December hearing.

Grant Proposal Summary

The City of Oxnard is requesting grant funds to complete a comprehensive update, including a sea-level rise analysis and adaptation section. The project includes interagency coordination, public involvement, development of LCP sea-level rise adaptation policies, and final update of the Land Use Plan and Implementation Plan. The City also proposes to develop a Sea-Level Rise Analysis and Adaptation report to share best practices, documents, and sea-level rise adaptation strategies. In addition, the proposal identifies Oxnard's goal of prohibiting power plants within the coastal zone.

The proposal includes the following major components:

- Task 1. Sea-Level Rise Scenarios & Projections
- Task 2. Sea-Level Rise Mapping
- Task 3. Planning Areas Risk Assessments
- Task 4. Sea-Level Rise Adaptation Measures
- Task 5. Oxnard LCP Update
- Task 6. CEQA Review (City funded, not included in grant budget)
- Task 7. Coastal Commission Certification (City funded, not included in grant budget)
- Task 8. Project Management (City funded, not included in grant budget)

Discussion

The City of Oxnard's 10.5 mile coastal zone has a wide range of resources, including public access and recreation areas, commercial harbor and marinas, and other coastal-dependent

industry, wetlands and other environmentally sensitive habitat areas, and coastal agriculture. The area is particularly vulnerable to sea-level rise. Many of the City's coastal resources are at risk from erosion, flooding, and inundation, in addition to some of the City's critical infrastructure and many beachfront private homes. For example, the City has identified the following assets and coastal resources at risk from sea-level rise: beaches, local and state parks, agricultural areas, wetland restoration projects, public utility infrastructure, on and off-shore oil extraction facilities, large public and private marinas, and river levees and flood control channels.

The City has also identified two once-through cooling power generation facilities as being at risk from sea-level rise and has proposed to prohibit such facilities within its coastal zone. The Coastal Act includes a number of policies identifying industrial facilities as priority uses in the coastal zone. Approval of this grant to Oxnard should not be construed as the Commission's approval, even in concept, of the City's proposed prohibition. The City should review Coastal Act policies, specifically 30260 and 30264, when updating its LCP to evaluate whether such a prohibition is consistent with relevant Coastal Act policies.

The LCP was certified in 1982 and is outdated. There is a great need for the update since the City has upcoming projects in the pipeline, including a large scale Coastal Conservancy wetland restoration project for the Ormond Beach wetland. There is also the need to relocate a State Park Campground due to on-going flooding in the area. The City of Oxnard has started the LCP update process, but is in need of funds to complete the planning work.

Likelihood of success is high given the City commitment to complete the planning work and the extensive leveraged funds. The update leverages significant completed work, including the City's General Plan, which directs the City to update the LCP, the EPA's remediation of the Halaco Superfund site, valued at \$10,000,000, the completion of the Coastal Conservancy's \$25 million Ormond Beach Wetland Restoration Feasibility Study, and TNC's Coastal Resilience Ventura mapping work valued at \$150,000. The City will use the Coastal Resilience Ventura maps and data from TNC to complete its sea-level rise vulnerability analysis and to develop adaptation policies.

Staff expects the update to moderately reduce workload for the Commission.

Award Recommendation

Commission staff and OPC staff recommend full funding of the City of Oxnard grant request through a combination of OPC and Coastal Commission grant funds. **Staff recommend the Commission authorize a grant of \$40,000 to fund Task 5.1 Update Oxnard LCP.** OPC staff recommends the OPC fund \$110,000, the remainder of the request.

The outcome of this grant is expected to be a submittal of a comprehensive LCP Update for Commission certification.

8) CITY OF SANTA MONICA

Project Title: City of Santa Monica LCP

Project Location: Los Angeles County

Project Timeline: March 2015 to April 2017

	Amount Requested	Recommended Award
CCC	\$250,000	\$225,000
OPC	\$0	\$0
Total	\$250,000	\$225,000

Grantee's Leveraged Funds: \$329,194

Leveraged funds include \$94,194 in in-kind services and \$235,000 from FY2013/2014 OPC grant.

Conditions of Approval

In addition to General Requirements, staff recommends the following specific conditions on the City of Santa Monica grant award:

1. By February 1, 2015, the grantee shall submit a revised work program and budget that reflects an award of \$225,000, and includes a reduction of \$25,000 in Task 2 Data Gathering, Research, LUP Update. The work program and budget shall include the necessary detail to complete contract execution.

Grant Proposal Summary

The City of Santa Monica proposal includes submittal of revised Land Use Plan and new Implementation Plan to the Coastal Commission for certification. The project includes identifying and updating relevant LUP policies; engaging the community; developing an Implementation Plan; assessing climate vulnerability and developing policies to address potential threats from climate change, and submitting the locally-adopted LCP to the Coastal Commission.

The proposal includes the following components:

- Task 1. Project Initiation; LUP analysis; team set-up, grant set-up
- Task 2. Data Gathering, Research, LUP update
- Task 3. Community outreach – Phase I (Goals & Issues)
- Task 4. Policy Proposal Development
- Task 5. Administrative & Public Drafts
- Task 6. Final Draft; Adoption
- Task 7: Submit Adopted LCP to Coastal Commission for Certification

Discussion

The City of Santa Monica has very significant public access resources. The Santa Monica Pier, promenade, and beaches provide affordable, low-cost visitor-serving amenities to millions of visitors each year. In 2013, an estimated 7.3 million visitors from outside Los Angeles County visited Santa Monica, in addition to the millions of County residents that visited the City. The City has taken steps to make the coastal zone walkable, bicycle-friendly, and accessible by

public transit, with a new Exposition Light Rail slated to begin operation in January 2016. These measures have the benefit of reducing vehicle miles traveled and overall greenhouse gas emissions generated by the City.

The City of Santa Monica does not have a certified LCP. The City has a Land Use Plan that was certified in 1992, but does not have an Implementation Plan. The Land Use Plan needs to be updated to address sea-level rise and climate change, the City's recent transportation upgrades and sustainability measures, as well as other changed conditions. Given the upcoming development of the Expo Light Rail line and other transportation projects, there is a great need to complete the LCP. There is significant sustainability planning work underway, including the development of multi-modal circulation plans to improve access to the beach, which should be incorporated into the LCP. The project integrates and builds on work being completed through the LA Regional Sea-Level Rise Study funded through a FY2013/2014 OPC grant. The significant transportation and sustainability planning aspects of the LCP could be a model for other urban jurisdictions.

The likelihood of completing the certified LCP is high. The key issues of disagreement that arose during the City's first attempt to certify the LCP can likely be resolved. City staff has started work to reformat the LUP and to draft the Downtown Specific Plan amendment. The City is committed to completing the certification work and the update and IP development are on the City's work plan, pending adequate funding. Certification of the LCP will reduce Commission workload and provide for a more efficient and streamlined permitting process.

Award Modifications

Staff recommends the Commission authorize a grant award of \$225,000 with a reduction of \$25,000 in Task 2 Data Gathering, Research, LUP Update given the substantial existing data and studies available for the planning area and the ability of the City to leverage this information.

The outcome of this grant is expected to be a submittal of a complete LCP for Commission certification.

9) CITY OF LOS ANGELES

Project Title: City of Los Angeles Venice Local Coastal Program

Project Location: Los Angeles County

Project Timeline: May 1, 2015 to April 30, 2017

	Amount Requested	Recommended Award
CCC	\$450,000	\$250,000
OPC	\$0	\$0
Total	\$450,000	\$250,000

Grantee's Leveraged Funds: \$745,000

Leveraged funds include \$500,000 in applicant funding and \$245,000 in in-kind funds

Conditions of Approval

In addition to General Requirements the following are specific conditions on the City of Los Angeles grant award:

1. By February 1, 2015, the grantee shall submit a revised work program and budget that reflects an award of \$250,000, focusing on Task 2.2 Venice Specific Plan Amendment Recommendations, 2.3 Venice Community Plan (Land Use Plan) Amendment Recommendations, and Task 2.6 Environmental Analysis. The work program and budget shall include the necessary detail to complete contract execution.
2. The work program shall be revised to reflect a deliverable of submittal of a final LUP and draft LIP to the Coastal Commission.
3. As part of the grant project, the City of Los Angeles shall include, as part of Task 2.6 Environmental Analysis, an assessment of issues related to protection of community character, redevelopment, and public access to the shoreline, and shall update the LUP and IP with policies and specific standards as necessary based on the results of the assessment.

Grant Proposal Summary

The City of Los Angeles proposal includes development of an Implementation Plan structure, recommendations for updates to Venice Community Plan and Specific Plan, and environmental analysis (existing conditions report) for the Venice LCP. The environmental analysis will likely include studies on potential impacts of future proposed land use changes, environmentally sensitive habitat/biological resources, water quality, climate change vulnerability impacts, emergency response, and parking availability.

The proposal includes the following major components:

PHASE 1: Issues Identification – *funded by FY2013/2014 LCP grant*

- Task 1.1. Identify Goals and Issues

PHASE 2: Draft Recommendations – *to be covered by this grant*

- Task 2.1. Selection of Coastal Zones and Intradepartmental Discussions

- Task 2.2. Venice Specific Plan Amendment Recommendations
- Task 2.3. Venice Community Plan (Land Use Plan) Amendment Recommendations
- Task 2.4. Identify structure and organization of Local Implementation Ordinance (LIP)
- Task 2.5. Identify Streamlined Permit Process
- Task 2.6. Environmental Analysis
- Task 2.7. Public Outreach and Intra/Interdepartmental Coordination

PHASE 3: Procedural Changes/Approvals – *not a part of this request*

- Task 3.1. Draft Plans
- Task 3.2. Westside Area planning Commission
- Task 3.3. City Planning Commission
- Task 3.4. City Council Adoption
- Task 3.5. Coastal Commission Certification

Discussion

The Venice area of the City of Los Angeles is a significant coastal access and tourist destination, with important low-cost visitor-serving facilities. The almost three mile shoreline area contains some of the City's most heavily used beach recreation areas and visitor amenities. Flooding and inundation from sea-level rise poses threats to the Venice beaches, visitor-serving facilities, beach-front parks, and commercial and residential development.

The City of Los Angeles does not have a certified LCP. The Venice segment LUP was effectively certified in June 2001, but no Implementation Plan was completed. The key issues that need to be addressed through the LCP include the continued provision of public access to the shoreline, including through public transportation options, the provision of lower-cost visitor-serving amenities, the evaluation of flooding and inundation from sea-level rise, and the preservation of community character, which is rapidly changing due to redevelopment. After thirteen years, the Land Use Plan is now out of date and needs to be updated to address these critical issues as well as other changed conditions.

In the City's response to follow-up questions on its grant application, the City commits to integrating and building from the results of regional sea-level rise studies and climate adaptation efforts, including AdaptLA and the LA Regional Sea-Level Rise study. Since Commission staff are also recommending the City of Santa Monica for a LCP grant, the City of LA will be able to coordinate and share information with the City of Santa Monica throughout the LCP certification process, enhancing the likelihood of success. The Venice LCP will help provide a template for the other Los Angeles LCP segments, including Pacific Palisades, San Pedro, Playa Del Rey, and portions of Los Angeles International Airport.

Recent Commission actions on development permits in Venice (see 5-14-0288, 5-14-0289, 5-14-0290, 5-14-0523 (Mildred 4 LLC)) highlight the need to study the impact of redevelopment on community character, public parking, and public access to the shoreline as part of the LCP. There is significant public concern regarding the potential cumulative impact to the character of Venice neighborhoods resulting from larger and denser residential development (see March 2014 hearing). The Commission has a strong interest in having the question of cumulative redevelopment impacts addressed in the Venice area. To address these concerns, staff

recommends the City of Los Angeles receive a grant award under the condition that the City complete an assessment of issues related to protection of community character, redevelopment, and public access to the shoreline, as a part of Task 2.6, Environmental Analysis. This condition requires the City to update the LUP and IP with policies and specific standards as necessary based on the results of the assessment. During the development of the LCP, the City should also ensure that further incremental residential development actions do not prejudice the development of the LCP.

The City is committed to the development and certification of the LCP, and has provided \$745,000 in matching funds. In comparison to no matching funds in the last grant round, the City has now allocated \$500,000 in City funding, and \$245,000 in in-kind services for the LCP. The LCP grant award should help the City continue to make progress on the Land Use Plan update and completion of the Implementation Plan.

The Venice segment generates a very significant permit workload, underscoring the need to certify a LCP. The certification of the Venice LCP would significantly reduce Commission workload and provide for a more efficient and streamlined permitting process.

Award Recommendation

Staff recommends the Commission authorize a grant of \$250,000 with a reduction of \$200,000 from the City of Los Angeles's request. Staff recommends fully funding Tasks 2.2 and 2.3, and funding 50% of Task 2.6 Environmental Analysis, to be consistent with the costs for this type of work provided in other proposals. The City may consider the best tasks to reflect the reduction in the award amount but candidates for reduction are 2.1, 2.4, and 2.5. This work reflects internal city department coordination, identification of the structure of the IP, and identification of a streamlined permit process. Commission staff suggests this work could be best completed with City funding or in-kind services.

The expected outcome of the grant award is submittal of the final Venice segment Land Use Plan and draft Implementation Plan for Commission review.

10) CITY OF NEWPORT BEACH**Project Title:** Newport Beach LCP Implementation Plan Certification Phase II**Project Location:** Orange County**Project Timeline:** February 2015 to November 2016

	Amount Requested	Recommended Award
CCC	\$87,540	\$67,000
OPC	\$0	\$0
Total	\$87,540	\$67,000

Grantee's Leveraged Funds: \$542,223

Leveraged funds include \$87,540 in applicant funds, plus \$225,000 spent on Phase I of project, and \$104,683 in in-kind services.

Conditions of Approval

In addition to General Requirements, staff recommends the following specific requirements on the City of Newport Beach grant award:

1. By February 1, 2015, the grantee shall submit a revised work program and budget that reflects an award of \$67,000, and includes a reduction of \$20,540 in Task 1, Community Outreach. The work program and budget shall include the necessary detail to complete contract execution.

Grant Proposal Summary

The City of Newport Beach requests funds for Phase II of the LCP development. The project includes community outreach, local public hearings, and submittal of the Implementation Plan to the Coastal Commission for certification. Phase I began in 2012, and involved development of a LCP Implementation Committee, and preparation of a draft IP.

The proposal includes the following major components:

- Task 1. Community Outreach
- Task 2A. Finalize Implementation Plan
- Task 2B. Continue Collaboration with CCC Staff
- Task 3. City Public Hearings
- Task 4. Coastal Commission Review
- Task 5. City Council Adoption
- Task 6. Certification

Discussion

The City of Newport Beach has 45 miles of shoreline, which range from sandy beaches, rocky intertidal reefs, bulkheads, and estuarine wetlands, and includes one of the largest small craft harbors in the United States. The City's coastal zone is complex, with many different types of coastal resources of statewide significance, including an abundance of shorelines, terrestrial and marine habitats, waterfront access, boating and other recreational opportunities, public access, and view sheds. The varied recreational amenities draw over 9 million visitors annually to the

City's beaches. Very few coastal communities of Newport Beach's size have such a diverse array of shoreline types, recreation opportunities, and Coastal Act resources.

The City of Newport Beach does not currently have a certified LCP. The City has a certified LUP, which was updated in 2005. Work is underway to complete the Implementation Plan, and the grant proposal would build on this existing effort. The City has committed to completing the Implementation Plan, and according to the project schedule, anticipates submitting the LCP to the Commission in November 2016.

Sea-level rise presents challenges for this area. Many key coastal resources, including beaches, habitat, boating facilities and recreational amenities are vulnerable to impacts from sea-level rise. Balboa Island already experiences flooding at extreme high tides, making the area highly vulnerable to increases in flooding and inundation due to sea-level rise. The LUP has policies that address sea-level rise, and the IP will implement these. In response to follow-up questions on the proposal, the City provided detailed background on existing studies that have evaluated sea-level rise concerns in the Balboa Island area. Extensive studies have been completed to date, and the IP will implement the results of the studies.

The Commission currently processes a very high number of permits each year for the City of Newport Beach. A certified LCP would greatly reduce Commission workload and provide for a more efficient and streamlined permitting process. Given the diverse Coastal Act issues present in the City, and the high Commission workload, there is a great need for a certified LCP.

Award Modifications

Staff recommends the Commission authorize a grant of \$67,000 with a reduction of \$20,540 in Task 1, Community Outreach to reflect the existing City funds to complete this work.

The outcome of this grant is expected to be submittal of a complete LCP for Commission certification.

11) COUNTY OF SAN DIEGO

Project Title: County of San Diego Local Coastal Plan Update

Project Location: San Diego County

Project Timeline: February 27, 2015 to February 24, 2017

	Amount Requested	Recommended Award
CCC	\$52,000	\$52,000
OPC	\$0	\$0
Total	\$52,000	\$52,000

Grantee's Leveraged Funds: \$52,000

Leveraged funds include \$52,000 in applicant's funding.

Conditions of Approval

In addition to General Requirements, staff recommends the following specific requirements on the County of San Diego grant award:

1. By February 1, 2015 the grantee shall submit a revised work program and budget with the necessary detail to complete contract execution.

Grant Proposal Summary

The County of San Diego proposal includes development of a Land Use Plan and Implementation Plan, and submittal of the LCP to the Coastal Commission for certification. The project addresses issues related to climate change, sea-level rise, greenhouse gas emissions reduction, enhanced public access, protection of scenic resources and view corridors, water conservation, stormwater management, as well as multi-hazard mitigation, habitat preservation, and invasive species management.

The proposal includes the following components:

- Task 1. Project Preparation
- Task 2. Development of Draft LCP
- Task 3. Review Comments on Draft LCP and Revise
- Task 4. Public Review
- Task 5. Public Hearings
- Task 6. Certification from Coastal Commission

Discussion

Although a small area, the County of San Diego coastal zone contains resources of statewide significance, including public access and environmentally sensitive habitat areas, such as lagoons and coastal sage scrub.

The County of San Diego does not currently have a LCP. Certifying the LCP will transfer permitting authority to the County. The LCP will include policies to help improve water quality, address water supply and smart growth, and will provide the opportunity to plan for flooding and storm surge impacts to the lagoons and other areas within the County's coastal zone. In addition,

the LCP includes a comprehensive plan to address climate change, building off policies in the General Plan.

The Commission currently does not process many permits for the County of San Diego coastal zone, so the anticipated work load benefits for this project are not high. However, the County anticipates increases in residential permits with the upturn in the economy, and without a LCP in place, this would increase the Commission's workload.

The likelihood of success is high for the LCP. The LCP has strong political support from the County Board of Supervisors and the LCP work plan includes close coordination with the cities of Del Mar, Encinitas, San Diego and Solana Beach, as well as robust public outreach.

Award Recommendation

Staff recommends the Commission authorize a grant of \$52,000 to fund the work program in full.

The outcome of this grant is expected to be submittal of a complete LCP for Commission certification.

12) CITY OF CARLSBAD

Project Title: City of Carlsbad Planning and Sea-Level Rise Update

Project Location: San Diego County

Project Timeline: April 1, 2015 to December 31, 2016

	Amount Requested	Recommended Award
CCC	\$100,000	\$48,000
OPC	\$150,000	\$180,000
Total	\$250,000	\$228,000

Grantee's Leveraged Funds: **\$1,592,297**

Applicant's funding for LCP portion of LCP/General Plan update is \$737,030. Total funding for LCP and General Plan update is \$1,592,297.

Conditions of Approval

In addition to General Requirements, staff recommends the following specific requirements on the City of Carlsbad grant award:

1. By February 1, 2015, the grantee shall submit a revised work program and budget that reflects an award of \$48,000, focusing on Task 8 Draft Local Coastal Program. The work program and budget shall include the necessary detail to complete contract execution, and also reflect any OPC award approved by the OPC at the Council's December hearing.

Grant Proposal Summary

The City of Carlsbad project includes: 1) certification of the Agua Hedionda Segment LCP and areas of deferred certification (ADC) within the Mello I and Mello II segments; and 2) certification of a fully updated LCP that establishes policies and adaptation measures for sea-level rise needed to protect public access, recreation, marine environment, land resources, coastal-appropriate development and industrial development. The General Plan and LCP update has been underway since 2008.

The proposal includes the following components (Tasks to be funded through Coastal Commission LCP and OPC SLR LCP grants bold):

- *Task 1. Initiation of Project and Community Involvement Strategy (not a part of grant)*
- *Task 2. Issues Identification and Community Visioning (not a part of grant)*
- *Task 3. Existing Conditions and Issues Exploration (not a part of grant)*
- *Task 4. Plan and Policy Alternatives (not a part of grant)*
- *Task 5. Preferred Plan (not a part of grant)*
- *Task 6. Draft General Plan (not a part of grant)*
- *Task 7. Draft Housing Element (not a part of grant)*
- **Task 8. Draft Local Coastal Program (funded through grant request)**
- **Task 9. Draft LCP Implementation Plan (Zoning Ordinance) Update (funded through grant request)**
- *Task 10. Environmental Review (not a part of grant)*
- **Task 11. City Hearings and Adoption (funded through grant request)**

Discussion

The City of Carlsbad's 14.4 square mile coastal zone includes significant coastal resources, including public access and recreation, lower-cost visitor-serving facilities, agriculture, tourism, scenic resources, and environmentally sensitive habitat areas, including the Agua Hedionda and Batiquitos Lagoons.

The City has significant infrastructure and recreation amenities at risk from sea-level rise. For instance, saltwater intrusion could be an issue for sensitive habitats. Portions of the City, including Carlsbad Boulevard, are at risk from increased flooding and inundation. The proposal will address issues associated with beach loss, shoreline protection and planned retreat, and erosion concerns from sea-level rise. The City also plans to include provisions to address other climate change impacts, including threats to environmental quality and ecosystems, such as impacts to nesting birds, increased wildfire and flooding hazards, and the need for additional emergency management services to address increased hazards. The LCP will reduce vehicle miles traveled and greenhouse gas emissions through transportation policies, land use, and circulation policies.

The first Carlsbad LCP segment was certified in 1987 and none of the LCP segments have been comprehensively updated since 1996. The LCP is segmented and confusing, and in need of an update to address outdated zoning regulations. In addition, given the resources at risk from sea-level rise, the LCP needs to be updated to address changed conditions due to climate change. There is a LCP update underway, and it will combine the segments into one, comprehensive LCP. This integrated and comprehensive approach could be a good model for other jurisdictions.

The work program will incorporate future hazard risks identified by the sea-level rise maps generated by the United States Geological Survey's Coastal Storm Modeling System (CoSMoS), as feasible.

The outdated zoning and LUP policies create a significant work burden for the Commission. In addition, projects in the uncertified area of Agua Hedionda can be complicated and tend to require significant staff time to process. The certification of the ADCs and the updated LCP should considerably decrease Commission work load.

Award Modifications

Commission staff and OPC staff recommend an overall grant award of \$228,000 from a combination of OPC and Coastal Commission funds. Commission staff recommend the Commission authorize a grant \$48,000 with a reduction of \$22,000, to fund a portion of Task 8 Draft Local Coastal Program. OPC staff recommends the OPC authorize a grant of \$180,000 to fund the remaining grant tasks.

The outcome of this grant is expected to be a submittal of a LCP Update for certification by the Commission, and certification of the Agua Hedionda Lagoon Segment and areas of deferred certification within the Mello I and Mello II segments.

VIII. GRANT AWARD ADMINISTRATION

Upon compliance with the requirements for each grantee to revise its work program and budget, the Coastal Commission staff will provide the local government with a draft grant contract for execution by both parties. Commission staff will also review, process, and approve invoices under the contracts. During this process, Commission staff will work with grantees to ensure work programs and budgets are sufficiently detailed and contain the necessary benchmarks to meet the goals of the grant program.

GENERAL CONTRACT REQUIREMENTS

1. All grantees shall work with Commission staff to finalize the work program, including progress benchmarks, and budget for Executive Director review and approval that reflects the amount of the grant award and final products that will be produced as a result of the grant funding. For programs that extend beyond the grant period, grantees shall include a schedule and benchmarks that show the plan for completing the certification process. The final work program, schedule, and budget shall be part of the grant contract.
2. Since the funds for these grants were appropriated in FY2014/2015, which ends on June 30, 2015, proposals must include work tasks that begin on or before May 1, 2015. Grantees must complete all funded tasks by April 30, 2017.
3. All grant contracts shall require progress reports at least every 3 months, and all subject to Executive Director review and approval. Each grant contract shall include the standards Commission staff will use to assess whether work progress reflected in such reports is adequate and procedures to address any grantee that is not meeting the final approved work program and benchmarks.

4. Grant funds will not be available in advance of expenditures. Expenses will be paid in arrears no more than once per month upon submission of an approved invoice by the grantee. That is, all funds will be provided on a reimbursement basis, and payments will be made to local governments only after work tasks are completed.
5. If a grantee fails to properly execute the contract or fails to meet the performance criteria and benchmarks in the grant contract, the Executive Director or his designee may cancel the contract and re-allocate any unspent funds to one or more of the other approved grantees whose grant was not fully funded.
6. Complete reimbursement of grant funds will be dependent upon successful completion of the final deliverable of the contract. Up to 20% of the grant award may not be reimbursable until all final deliverables have been completed by the grantee.
7. Should a jurisdiction not need the full amount of funds awarded by the Coastal Commission, they shall notify Commission staff as soon as possible so that any remaining allocated but unspent funds may be redistributed, as feasible. In addition, should a local government fail to enter into a contract in a timely manner or fail to meet work program benchmarks as noted above, the Executive Director or his designee may reallocate funds to supplement an already awarded grant.
8. Travel Reimbursement shall be at the same rates as similarly situated State employees. If any conflicts exist between the Contractor's rates and those applicable to State employees, the State's reimbursement rates shall prevail. Receipts will be required. All travel costs are inclusive within the budgeted amount referenced in the contract.

ATTACHMENT A. COMPLETE LIST OF PROPOSALS¹⁰**Table 3. Proposals received for the Coastal Commission LCP Local Assistance Grant Program and the Ocean Protection Council SLR LCP Grant Program¹¹**

Jurisdiction	Amount Requested (\$)			Project Type
	Coastal Commission	OPC	Total Requested	
North Coast				
County of Humboldt	\$100,000	\$25,000	\$125,000	LCP update
City of Trinidad	\$80,000	\$0	\$80,000	LCP update/ cert. of ADC
North Central				
San Francisco	\$94,573	\$91,046	\$185,619	LCP update
Central Coast				
County of Monterey	\$100,000	\$0	\$100,000	LCP update
City of Monterey	\$150,000	\$100,000	\$250,000	New LCP
City of Morro Bay	\$147,000	\$0	\$147,000	LCP update
San Luis Obispo County	\$50,000	\$50,000	\$100,000	LCP update
South Central				
County of Santa Barbara ¹² (Coastal Commission , OPC)	\$64,000	\$119,000	\$183,000	LCP update
County of Ventura	\$168,119	\$0	\$168,119	LCP update
City of Oxnard	\$75,000	\$75,000	\$150,000	LCP update
South Coast				
City of Santa Monica	\$250,000	\$0	\$250,000	New LCP
City of Los Angeles	\$450,000	\$0	\$450,000	New LCP
City of Newport Beach	\$87,540	\$0	\$87,540	New LCP
San Diego				
County of San Diego	\$52,000	\$0	\$52,000	New LCP
City of Carlsbad	\$100,000	\$150,000	\$250,000	LCP update/ cert. of 2 ADCs
City of Encinitas	\$0	\$195,000	\$195,000	LCP update
City of Del Mar	\$100,000		\$100,000	LCP update
Port of San Diego	\$0	\$250,000	\$250,000	Port Master Plan Update
Total Requested	\$2,068,232	\$1,155,046	\$3,223,278	

¹⁰ Click on the hyperlinks in the table to access the complete application packets.¹¹ Note: the City of San Francisco reduced their request from \$98,475 from both the OPC and Coastal Commission to \$94,573 from the Coastal Commission and \$91,046 from the OPC, which reduced the total amount requested from the Coastal Commission from \$2,072,134 to \$2,068,232, and reduced the amount requested from the OPC from \$1,162,475 to \$1,155,046.¹² The County of Santa Barbara submitted separate applications to the Coastal Commission and OPC. Click on the appropriate link to see the applications.

ATTACHMENT B. EVALUATION CRITERIA ADOPTED BY COASTAL COMMISSION ON AUGUST 14, 2013

- ◆ **Public benefit/Significance:** The Commission will consider the extent to which the proposed LCP planning effort will address issues of statewide significance and maximize public benefits of the coast. These can include: preserving and enhancing coastal habitat, protecting, providing and enhancing public access, protecting priority land uses such as agriculture, coastal dependent development or recreation, Smart Growth and sustainable development initiatives, protecting and providing lower cost visitor and recreational opportunities, and addressing climate change and sea-level rise. Provisions for citizen participation must be a part of the work program.
- ◆ **Relative Need for LCP/Extent of Update:** Related to the public benefits of a proposal, the Commission will consider the relative need for a LCP update, considering the length of time since a LCP or LCP segment has been updated and the significance of the issues proposed to be updated. For example, many sensitive species and habitats have been identified since the time of certification of many LCPs. A proposal to update a LCP's environmentally sensitive habitat (ESHA) policies, ordinances, resource maps, etc. may be an important update in specific jurisdictions. Other jurisdictions may benefit from updates in policy areas that will resolve known deficiencies or sources of conflict and/or appeals of local coastal development permits to the Commission. In addition, the extent or scope of an update is an important consideration, with higher priority being placed on proposed updates of greater extent/scope, such as a complete LUP/IP update, or an update that results in comprehensive updating of one or more policy areas or a geographic sub-area.
- ◆ **Addressing the Effects of Climate Change:** Climate change is one of the most significant policy areas to emerge since many of the LCPs have been certified. The Commission is seeking LCP updates that address the effects of climate change, including sea-level rise and other coastal hazards, as well as other issue areas affected by climate change, such as changes in habitat, fire hazards, and transportation and land use policy to facilitate reductions in greenhouse gas emissions and vehicle miles travelled. Special consideration will be given to LCP amendment proposals to address this policy area.
- ◆ **Likelihood of Success/Effectiveness:** The Commission has had past grant programs where the investment of public funds has not resulted in completed certified LCPs or LCP Amendments. In a few cases, funding has been awarded but reverted. Overall, the success of the Commission's grant program will be measured by the progress made toward LCP certification or update.

The Commission thus will consider the likelihood of success of each proposal, including evaluating the practicality, feasibility, and effectiveness of a proposed work program that may lead to successful implementation. Proposals should address the need for coordination with the public and the Commission, and provide for practicable benchmarks for LCP amendment development and review. Other evidence in support of this criteria may include resolutions of intent and endorsement for the proposed work from the jurisdiction and other organizations, matching funds or other complementary

efforts (see below), or other factors that may affect the likelihood that a LCP amendment will be successfully completed. Grantees will be asked to describe any LCP planning work that has been initiated or is already underway at the local level and how this grant program is needed to substantially further that effort. A resolution from the grantee committing to completing a LCP Amendment submittal to the Commission will be required as part of the application.

For new LCP development, the local government should demonstrate its willingness and capacity to assume local coastal development permit processing. Related, some areas of the coastal zone remain uncertified because the Commission and local government have been unable to reach agreement on the resolution of issues or the issue is particularly intractable. The Commission will consider the likelihood that such areas and specific policy questions can be successfully addressed, leading to certification of the area.

- ◆ **Workload:** The Commission will consider the level of existing permit workload generated by uncertified jurisdictions and thus the relative statewide benefits of certification of any particular jurisdiction.

While most of the geographic area of the coastal zone is under certified LCPs, there are 36 segments that are not yet certified and 44 specific Areas of Deferred Certification. The Commission is responsible for review of all coastal development permits in these uncertified areas. If LCPs were certified for these areas, then most coastal development permits would be reviewed at the local level and the Commission's staff resources could be reallocated to assist matters of more statewide significance and importance, such as early coordination with local government on LCP planning matters, as well as oversight, review, and coordination with local governments on LCP implementation.

- ◆ **Project Integration/Leverage/Matching Funds:** The Commission will consider the relationship of the LCP work program to other planning work being undertaken by the jurisdiction. Grantees will be asked to describe any other related grant awards (such as through the Ocean Protection Council, Coastal Conservancy or the Strategic Growth Council) that may support the LCP planning work and any availability and amount of local matching funds.

There are several related grant programs underway which may positively integrate with this LCP Planning Grant program. For example, the Ocean Protection Council is currently processing applications for grants to update LCPs to address Sea-level Rise. The Coastal Conservancy is administering a Climate Ready grant program (http://scc.ca.gov/files/2013/07/Climate-Ready-grant-announcement-July-18_FINAL.pdf). The Strategic Growth Council provides a Sustainable Communities Planning Grant and Incentives Program to fund efforts to conduct planning activities that will foster sustainable communities, lead to reduced greenhouse gas emissions, and achieve other sustainability objectives, and for which coastal jurisdictions are eligible to apply. The Commission will consider the ability to integrate and leverage any additional program funds available that could help support a comprehensive LCP certification effort or update.

ATTACHMENT C. PROPOSAL RANKINGS BASED ON CRITERIA

Table 3. LCP Grant Evaluation Scoring by Points*

Jurisdiction (Listed by points, North to South)	Public Benefit/ Sig.	Need/ Extent	Climate Change	Likelihood of Success	Work- load	Project Integration/ Matching funds	Total Score	Rating**
City of San Francisco	2.5	3	3	3	2.5	3	17	High
City of Morro Bay	3	3	3	3	2	3	17	High
City of Oxnard	3	3	3	3	2	3	17	High
City of Trinidad	3	3	3	2	2.5	3	16.5	High
County of Santa Barbara	3	2	3	3	3	2.5	16.5	High
City of Newport Beach	3	2	3	3	3	2	16	High
City of Santa Monica	3	3	3	3	2	2	16	High
City of Carlsbad	3	3	2	3	2.5	2	15.5	High
City of Monterey	3	3	3	2.5	1.5	2	15	High
City of Los Angeles	3	3	2	2	3	2	15	High
County of San Diego	2	3	3	3	1.5	2.5	15	High
County of Humboldt	3	2	3	2	1.5	3	14.5	Med/High
City of Del Mar	2	2	3	2.5	1.5	2.5	13.5	Med
County of Monterey	3	2	2	2	2	2	13	Med
County of Ventura	2.5	2	1.5	3	1.5	2	12.5	Med
County of San Luis Obispo	2	2	2	2	2	2	12	Med

*Criteria points: 3=High, 2=Medium, low=1; **Total score: Low= 6-10, med=11-14, high=15-18

Table 4. LCP Grant Evaluation Review Sheet (listed in order of points, north to south)*

City and County of San Francisco

Jurisdiction	Public Benefit/Significance	Need/Extent	Climate Change	Likelihood of Success	Workload	Project Integration ⁺	Matching Funds (how much?)	Total Score
City/County of San Francisco	2.5	3	3	3	2.5	3	\$398,792	17
LCP update to address SLR and implement Ocean Beach Master Plan	Medium/High- Small area, but significant coastal access destination and environmentally sensitive habitat area. Project includes increased public access benefits from erosion management, increased habitat. Addresses critical public infrastructure including great highway, waste water treatment plant; includes innovative climate adaptation strategies, relevant to other jurisdictions.	High- Partial update to address SLR; LCP is 30 years old, erosion a significant issue not planned for in current LCP; Opportunity to implement the Ocean Beach Master Plan; Will prepare City for a comprehensive update.	High- Increased erosion due to SLR presents a crisis for the area – existing shoreline already located on fill, will recede further as sea levels rise, exposing both natural and built resources to coastal hazards - Ocean Beach Master Plan includes an approach to address changing climate-coastal structural protection, Beach nourishment, and managed retreat.	High- Ocean Beach Master Plan has improved coordination among local, state, and fed agencies, local community, and other stakeholders. City is committed to amending LCP to incorporate SLR and facilitate implementation of the Plan.	Medium/High- Few projects come to the Commission but they are difficult to resolve and take up lots of staff time due to the general, outdated policy language. Dealing with the erosion problem at Ocean Beach results in workload demands.	High- Integrated with FEMA study, City PUC SLR studies, and the Ocean Beach Master Plan.	Includes in-kind services. City is contributing their own funding through involvement of key staff members.	High

* Criteria points: 3=High, 2=Medium, low=1; Total score: Low= 6-10, Med=11-14, High=15-18

⁺ Points listed under Project Integration are a combination of the Project Integration and Matching Funds score

Proposed LCP Grant Awards for Fiscal Year 2014/2015

City of Morro Bay

Jurisdiction	Public Benefit/Significance	Need/Extent	Climate Change	Likelihood of Success	Workload	Project Integration	Matching Funds (how much?)	Total Score
City of Morro Bay	3	3	3	3	2	3	\$437,242	17
LCP update	High- Coastal access and tourist-serving amenities, biological resources, estuary, commercial fisheries, wastewater treatment plants, agriculture; Addresses issues of statewide significance- estuary only one of its kind; supports protection of and building adaptive capacity of Morro Bay estuary; Enhances coastal access; Model for other organizations- especially regarding monitoring plan, and estuary approach.	High- LCP last certified in 1984, and is out of date, doesn't adequately protect resources; Existing maps are outdated, don't identify coastal resources at parcel level; Update underway, but lacking funds.	High- Major focus on SLR; Will incorporate results of vulnerability assessment funded through OPC grant last round; Examples of rezoning could be applicable to other jurisdictions.	High- Fully committed to update; likelihood of success high.	Medium- LCP very outdated, creates work for district; City explains in application that it is difficult presently to efficiently and effectively approve new Coastal Development Permits due to inconsistencies and old data contained in the General Plan, Zoning Ordinance, and LCP.	High- Leverages work from FY13-14 OPC grant to identify SLR vulnerability.	\$111,242, in-kind services, \$250,000 in FY13-14 OPC grant funds, \$76,000 in City funding related to OPC grant.	High

City of Oxnard

Jurisdiction	Public Benefit/Significance	Need/Extent	Climate Change	Likelihood of Success	Workload	Project Integration	Matching Funds (how much?)	Total Score
City of Oxnard	3	3	3	3	2	3	\$450,000	17
LCP update to address SLR	High- Oxnard's 10.5 mile coastal zone has a wide range of resources, many of which are at risk from sea-level rise, including: local and state parks and public recreation; commercial harbor and coastal-dependent industry; wetlands and endangered species habitats; back dunes, coastal agriculture; public utility infrastructure; two OTC power generation facilities; on and off-shore oil extraction facilities; large public and private marinas, river levees and flood control channels, and many beachfront private homes.	High- Partial update. LCP is outdated from 1982. Great need for update since there are upcoming projects in area, including for power plants, and for a large scale Coastal Conservancy wetland restoration project for the Ormond Beach wetland. There is also the need to relocate a State Park Campground due to on-going flooding in the area. LCP is old and outdated. Very much in need of funds to complete work.	High- Significant resources at risk from SLR; Leverages TNC mapping work; Completes SLR analysis and adaptation policies.	High- City is committed to update and work is underway.	Medium- Moderate workload relative to district.	High- Leverages EPA's superfund site work, valued at \$10,000,000, TNC's mapping work at \$150,000, \$14,655 in matching funds, \$133,000 in in-kind funds.	Leverages \$150,000 from TNC for the climate resilience SLR mapping tool/data. City contributes \$150,000 from general fund per year.	High

City of Trinidad

Jurisdiction	Public Benefit/Significance	Need/Extent	Climate Change	Likelihood of Success	Workload	Project Integration	Matching Funds (how much?)	Total Score
City of Trinidad	3	3	3	2	2.5	3	\$2,800,000	16.5
LCP update	High- Small town, but has significant scenic, cultural, and environmentally sensitive resources, including boating, pier harbor uses. Designated a Critical Coastal Area, Area of Special Biological Significance, and State Water Quality Protection Area.	High- LCP is oldest in state and has inconsistencies. Proposal includes a comprehensive update; addresses ADC.	High-Significant impacts from climate change. Update will include issues from erosion, flooding, drainage, bluff instability, saltwater intrusion into septic systems, impacts to stormwater outfalls. Coastal ecosystems, cultural sites, and fisheries at risk.	Medium- ADC issues seem to be resolved. Issues with tribal community may take time to resolve. Work is underway. Committed to process, but without funding, it will move very slowly.	Medium/ High- Inconsistencies in old LCP lead to increased staff time dealing with confusion on permits and to appeals.	High- Great need for funds. Small community with limited resources. In need of funding to complete work in timely manner.	\$200,000 in in-kind services, \$15,000-\$20,000 from general fund for past 5 years, per year on update, and \$2.5 million of Prop 84 grant funds for stormwater improvements	High

Proposed LCP Grant Awards for Fiscal Year 2014/2015

County of Santa Barbara

Jurisdiction	Public Benefit/Significance	Need/Extent	Climate Change	Likelihood of Success	Workload	Project Integration	Matching Funds (how much?)	Total Score
County of Santa Barbara	3	2	3	3	3	2.5	\$317,000	16.5
Partial update to address SLR/hazards	High- Has significant coastal resources, many of which are at risk from SLR, including: Estuary, creek mouth, and bluff top communities; Critical infrastructure, including wastewater and airport; Goleta Slough; Recreational beaches, piers, picnic areas, coastal access parking, buildings, restaurants.	Medium- LCP certified in 1981, has been updated, but not to address coastal hazards. Needs to address SLR and future coastal hazards. No need for reformatting or reorganization. Update is limited in scope.	High- Planning for climate change greatly needed in Santa Barbara. Since 2009, County has completed a Climate Action Study, Energy and Climate Action Plan, and proposed Climate Adaptation Plan (applying for Climate Ready funds for this). Will analyze vulnerability of natural systems. Will look at use of natural/green solutions to reduce gray solutions that replace natural systems.	High- County is motivated to complete work, has work underway through Climate Resilience project. Lots of resources at stake, so has motivation to plan ahead. Lots of engaged partners.	High- Significant number of complex appeals. Update would reduce workload.	Medium/High- Leverages Climate Ready and Coastal Resilience Ventura work. Opportunity to share information with cities in SB County.	\$16,000 (CCC grant) and \$29,000 (OPC grant) in applicant funding plus \$200,000 from Climate Ready grant; \$22,000 from TNC; \$50,000 from County Board of Supervisors for Phase I of the County Coastal Resiliency Project.	High

Proposed LCP Grant Awards for Fiscal Year 2014/2015

City of Newport Beach

Jurisdiction	Public Benefit/Significance	Need/Extent	Climate Change	Likelihood of Success	Workload	Project Integration	Matching Funds (how much?)	Total Score
City of Newport Beach	3	2	3	3	3	2	\$542,223	16
Submittal of IP for certification	High- Very complex coastal zone; very few coastal communities of this size have such an abundance of shorelines, natural areas, waterfront access, recreational opportunities, public access, and view sheds.	Medium- New LCP – grant is for completion of Implementation Plan; Has updated LUP from 2005; Great need for certified LCP. Lots of Coastal Act issues and large workload.	High- Area has lots at risk from SLR. LUP has policies that address SLR, and IP will implement these. In supplemental information, provided detailed background on existing studies to evaluate sea-level rise concerns in the Balboa Island area. Extensive studies have been completed to date, and IP should implement the results of the studies.	High- Work is underway and City is committed to complete LCP. Schedule is optimistic, but in line with progress to date. There are some remaining controversial issues that will have to be resolved before LCP completion, and grant funds may help motivate resolution of issues.	High- High work load. Very large number of permits processed per year.	Medium- Some integration with SLR studies occurring in region. More detailed SLR modeling occurring in Balboa Island area.	Matching funds from applicant of \$87,540, plus \$225,000 spent on Phase I of project. In-kind funds of \$104,683.	High

Proposed LCP Grant Awards for Fiscal Year 2014/2015

City of Santa Monica

Jurisdiction	Public Benefit/Significance	Need/Extent	Climate Change	Likelihood of Success	Workload	Project Integration	Matching Funds (how much?)	Total Score
City of Santa Monica	3	3	3	3	2	2	\$329,194	16
LCP certification	High- Major recreational and public access resources including 7.3 million visitors annually in 2013; focus is on transportation access; new development/ sustainability; coordination of light rail and downtown/pier.	High- No LCP; need for certified LCP is great. Projects in pipeline with expo and transportation work, so very important to update LCP to address the upcoming projects. LUP completed in 1992, and is outdated, doesn't address climate change or other changed conditions.	High- Significant sustainability work underway by City, including policies on multi-modal circulation to improve access to beach; Builds on work being completed through OPC Regional SLR study. Could be model for transportation/ sustainability in the LCP for other jurisdictions.	High-Likelihood of success high. Key issues of disagreement regarding the LCP can likely be resolved. Update is on City's work plan, pending adequate funding, work has started on reformatting of LUP and drafting of Downtown Specific Plan amendment.	Medium- Workload moderate; less than other south coast jurisdictions.	Medium- Builds on OPC slr study. Would be a good urban example for other communities, once certified.	\$235,000 from OPC, In-kind Services: \$94,194	High

Proposed LCP Grant Awards for Fiscal Year 2014/2015

City of Carlsbad

Jurisdiction	Public Benefit/Significance	Need/Extent	Climate Change	Likelihood of Success	Workload	Project Integration	Matching Funds (how much?)	Total Score
City of Carlsbad	3	3	2	3	2.5	2	\$1,592,297	15.5
LCP update plus certification of areas of deferred certification (ADCs)	High- Significant resources, 10 miles of shoreline. Resources include: access and recreation; lower cost visitor serving facilities; agriculture, habitat, including Aqua Hedionda and Batiquitos Lagoon; tourism, scenic resources. Doesn't include additional public participation except for public hearings and what has been completed to date through General Plan/ initial LCP update process.	High- Major comprehensive update plus certification of ADC. LCP has not been comprehensively updated since 1996. There is a lack of cohesive, integrated long-range planning instruments and outdated zoning regulations. Need to update is great- LCP is segmented and confusing.	High- Uses an integrated and comprehensive approach which could be a good model for others. Has significant infrastructure and recreation at risk from SLR; Saltwater intrusion could be an issue for sensitive habitats, and Carlsbad boulevard at risk. Update will address issues associated with beach loss, shoreline protection and planned retreat, and erosion concerns. Will also look at threats to environmental quality and ecosystems, including nesting birds; wildfire and flooding hazards and emergency management; will reduce GHG emissions through transportation policies, land use and circulation policies.	High- work is underway, City is committed to update, has strong political support.	Medium/High - certifying ADCs would decrease staff work load. Agua Hedionda projects are complicated and take time. There would be benefits to staff in terms of workload. City says processing of development permits takes a long time due to outdated zoning and LUP.	Medium- Doesn't mention integration with CoSMoS work; some concerns with timing of release of CoSMoS and the 2-year grant timeline. Already completing General Plan/ LCP update, and has consultant under contract.	Applicant's funding for project is \$737,030. Total funding for LCP/General Plan update is \$1,592,297.	High

City of Monterey

Jurisdiction	Public Benefit/Significance	Need/Extent	Climate Change	Likelihood of Success	Workload	Project Integration	Matching Funds (how much?)	Total Score
City of Monterey	3	3	3	2.5	1.5	2	\$75,000	15
New LCP certification; Submittal of a Local Coastal Program (LCP) that addresses the City's five Coastal Zone subareas in a single Land Use Plan and Implementation Plan	High- Area includes significant public access, recreation, commercial fishing, and tourism resources. National Marine Sanctuary located adjacent to the planning area boundary. Anticipates unique policies addressing maintenance and support of recreation and commercial fishing. Addresses climate change adaptation for critical resources.	High- No LCP, so a definite need, but doesn't generate as many permits as other areas, smaller coastal zone area.	High- Includes SLR land use and infrastructure inventory, modified SLR projections to account for local conditions, based on 2012 NRC report, parcel-specific maps that detail all risk factors, such as inundation, storm flooding, wave impact, erosion, tsunamis, and high fire hazard. Builds off regional work, includes robust public engagement plan for engaging community on SLR.	Med/high-based on success of recent planning and coordination efforts. City is motivated to complete planning work and has Council support.	Low/Medium- Small area, not too many permits. Workload is relatively low.	Medium- Complements work occurring in region on SLR through OPC and Climate Ready grants, as well as work being completed through the Waterfront Master Plan and a Coastal Zone Chapter in the City of Monterey Zoning Code.	\$50,000 in in-kind staff time and \$25,000 from general fund.	High

City of Los Angeles

Jurisdiction	Public Benefit/ Significance	Need/Extent	Climate Change	Likelihood of Success	Workload	Project Integration	Matching Funds (how much?)	Total Score
City of Los Angeles	3	3	2	2	3	2	\$745,000	15
Proposal includes completion of recommended draft amendments to the Venice Community Plan, Specific Plan, and a new Local Implementation Plan framework	High- Beach area and community is a significant coastal access and tourist destination, important low-cost visitor serving facilities.	High- No LCP, large permit workload; Dual permit jurisdiction leads to more work for Commission staff and confusion for local applicants.	Medium- Beach and access threatened by SLR. Very little discussion on how climate change will be addressed. Integrating department climate adaptation plans and climate resilience outreach is mentioned in different portions of the application. In supplemental information, City commits to integrating with regional SLR efforts including AdaptLA and CoSMoS modeling. No information on how City will develop policies to reduce impacts from climate change.	Medium- City is moving forward on the update, but progress is going slowly. Does not commit to a full update in application. Submittal of the IP is in phase 3, which is not included in this grant. It is not clear how Phase 3 will be funded.	High- Very high work load. Dual permit jurisdiction adds extra workload to City and Commission staff.	Medium- No mention of how project integrates with regional climate change efforts. Mentions other transportation projects and funds, but does not include those as sources of funding.	Includes \$500,000 in applicant funding and \$245,000 in in-kind funds.	High

County of San Diego

Jurisdiction	Public Benefit/Significance	Need/Extent	Climate Change	Likelihood of Success	Workload	Project Integration	Matching Funds (how much?)	Total Score
County of San Diego	2	3	3	3	1.5	2.5	\$52,000	15
LCP certification	Medium- Small area, fewer resources than other areas. Resources include habitat, including lagoons and coastal sage scrub, and public access	High- Certification of LCP. LCP is needed to improve clarity and utility of existing LCP and incorporate updates to complement other County planning documents and regional planning efforts for the coastal zone.	High- Includes a comprehensive plan to address climate change, building off policies in the General Plan. Includes: Smart growth, water supply, water quality, flooding, precipitation, and sea-level rise as applicable. Not as urgent as other areas. Focus on flooding and storm surge impacts to lagoons.	High- Likelihood of success high; small planning area; has strong political support in completing update from Board of Supervisors; has robust public outreach plan.	Low/ Medium- Low work load, but County anticipates increase in residential permits with upturn in economy. Some permits but they are straight-forward, not complicated and don't take up too much staff time.	Medium/High- Involves close coordination with the cities of Del Mar, Encinitas, San Diego and Solana Beach. Specifically, work undertaken by these cities will be supported and enhanced through an update of the County's LCP, including long-term comprehensive shoreline management strategies that address future sea-level rise projections.	\$52,000 in applicant's funding (in-kind funding)- 50% matching funds.	High

Proposed LCP Grant Awards for Fiscal Year 2014/2015

County of Humboldt

Jurisdiction	Public Benefit/Significance	Need/Extent	Climate Change	Likelihood of Success	Workload	Project Integration	Matching Funds (how much?)	Total Score
County of Humboldt	3	2	3	2	1.5	3	\$833,900	14.5
Comprehensive update to Humboldt Bay Plan	High - Large protected body of water with significant coastal resources, including access, recreation, priority uses, marine resources, ESHA, water quality, timberland, archaeological resources, and public facilities, many of which are at risk from SLR. Proposal addresses potential impacts to coastal dependent uses, critical public facilities (roads, wastewater treatment plants), shoreline protection structures communities, agriculture, and ESHA.	Medium- Only focuses on Bay, but need is great. LCP is from 1992, and conditions have changed significantly since then. Commission staff have urged County to complete industrial/ coastal dependent land uses market study before updating LCP to address changed conditions.	High- Sea-level rise a huge concern for bay - SLR mapping and adaptation planning work underway in Bay - Uses locally relevant mapping - Resources at risk include coastal marshes, ag lands, wastewater treatment plants, Highway 101, commercial and residential areas - Can leverage existing work underway.	Medium- Completion of update could be slower since General Plan has been in process for 8 years. However, County states that given work underway with General Plan and SLR Working Group, and on-going coordination with the Commission staff, the update can occur relatively quickly and successfully.	Medium/ Low- Moderate workload currently, but LCP update will reduce potential for future appeals.	High- Work program will be coordinated with Arcata and Eureka LCP updates; builds on work completed by SLR Working Group in Humboldt Bay.	Matching funds include \$4,900 from mitigation fee revenue, \$30,000 in LCP grant funds, plus \$800,000 in in-kind services.	Med/ high

City of Del Mar

Jurisdiction	Public Benefit/ Significance	Need/Extent	Climate Change	Likelihood of Success	Workload	Project Integration	Matching Funds (how much?)	Total Score
City of Del Mar	2	2	3	2.5	1.5	2.5	\$100,000	13.5
LCP amendment to address SLR	Medium- Has 2 miles of coast line; resources include beaches, access, ecologically-sensitive lagoons, and visitor-serving attractions, including the State-owned 22nd District Agricultural Association (DAA) Del Mar Racetrack and Fairground. However, focus on protection strategy for SLR may have negative consequences on resources.	Medium- LCP was updated recently, but is in need of an update to address SLR. Limited in scope- SLR update only.	High- Focus of application is SLR study and development of adaptation strategies to protect and retreat. May be concerns that protection strategies are not readily transferable or consistent with the Coastal Act. SLR study will be based on existing data from Scripps and the San Diego Bay SLR Strategy, the SD County Hazard Mitigation Plan Update, and the bridge assessment analysis from the SD Double Track Project, and the railroad trestle bridge crossing.	Medium/High- limited detail on methodology for SLR analysis but in supplemental information, applicant agrees to revise workplan to include detailed assessment on options to protect public access, viewsheds, and other coastal resources with sea-level rise.	Low/Medium - workload fairly low; City is pretty much developed so there is some recycling of development. The biggest workload is work with the Fairgrounds but it is an Area of Deferred Certification.	Medium/High - Will be integrated with efforts to prepare for SLR in Solana Beach and City of San Diego; will continue to engage with Climate Collaborative Network to complete update.	Provides \$36,190 in in-kind funds and \$63,810 in other funds for technical studies.	Med

County of Monterey

Jurisdiction	Public Benefit/Significance	Need/Extent	Climate Change	Likelihood of Success	Workload	Project Integration	Matching Funds (how much?)	Total Score
County of Monterey	3	2	2	2	2	2	\$180,000	13
LCP update to address SLR and maritime chaparral management	High- Significant coastal resources including: public access, recreation, tourist destinations, including Big Sur, maritime chaparral (ESHA) and other habitat, National Marine Sanctuary; significant sea-level rise impacts.	Medium- Certified in 1988, has not been comprehensively updated since; Project includes Chaparral study and SLR amendment.	Medium- Addresses most pressing issues of climate change-wildfire and SLR - Proposes to develop specific adaptation strategies for SLR	Medium- Work is underway but suffers from difficult policy disputes. Funding would help support update by bringing best available science to bear on difficult issues to build broad community support for the effort.	Medium- Workload is moderate. There is a backlog of permits, and a fair number of appeals, which are time intensive. The update should help reduce backlog and appeals.	Medium- Integrated with OPC SLR project. But needs more clarification on how SLR work proposed in application fits with the existing OPC work program.	\$30,000 of in-kind funding, plus \$150,000 in FY13/14 OPC funds.	Med

Proposed LCP Grant Awards for Fiscal Year 2014/2015

County of Ventura

Jurisdiction	Public Benefit/Significance	Need/Extent	Climate Change	Likelihood of Success	Workload	Project Integration	Matching Funds (how much?)	Total Score
County of Ventura	2.5	2	1.5	3	1.5	2	\$329,540	12.5
LCP update to address ESHA	Medium/High - Significant habitat and environmentally sensitive areas in Santa Monica Mountains. Up-to-date mapping will ensure better protection of ESHA and reduced conflict.	Medium- Extent of work is limited to ESHA. ESHA maps have not been updated since certification of LCP. Work is underway, but funds are needed to engage public in update. Without funding study won't be as comprehensive. Commission staff may be able to provide in-kind assistance with mapping.	Low/Medium- Protection of contiguous habitat will help habitat and species shift and adapt to climate change. Does not specifically say how they will address any additional climate change impacts to ESHA.	High- Work is underway, strong working relationship with staff. However, in application, Ventura Co says success is dependent on public support. Funds will help engage public and make likelihood of success higher.	Low/ Medium- Workload is relatively low relative to district.	Medium- Leverages funds from Coastal Impact Assistance Program, Coastal Biology study, and CIAP- LCP update.	Leverages \$270,035 in CIAP grants plus \$59,505 in applicant funding.	Med

County of San Luis Obispo

Jurisdiction	Public Benefit/Significance	Need/Extent	Climate Change	Likelihood of Success	Workload	Project Integration	Matching Funds (how much?)	Total Score
County of San Luis Obispo	2	2	2	2	2	2	\$868,129	12
Los Osos Community Plan Update/ Estero Area SLR study	Medium- Focused on bringing future growth into alignment with available resources, and protection of sensitive coastal resources. Has recreation, open space, coastal access resources in the area. SLR study will help protect sensitive habitat areas including Morro Bay Estuary, Sweet Springs Nature Preserve, Elfin Forest, and Los Osos creek.	Medium- Project is already underway, but if doesn't receive grant funding, will likely not address SLR in detail. Limited extent. Only includes a small portion of the county.	Medium- Includes SLR assessment of the Estero Area Plan and Los Osos. Plans to follow Commission draft SLR Guidance but gives limited detail on process.	Medium- Since work is underway on Community Plan Update, it might be difficult to complete the SLR study in enough time to integrate into the planning process. Would have to complete an additional SLR Amendment, which is not included in application.	Medium- Moderate workload; fair number of appeals.	Medium- Since work is underway on plan, it might be difficult to complete the SLR study in enough time to integrate into the planning process.	Has \$98,846 in in-kind services, plus \$769,283 in matching funds (\$365,000 from USFWS, \$92,800 from SGC Grant, \$311,483 from CDFW Section 6 Grant).	Med

John Laird, Secretary for Natural Resources, Council Chair
Matt Rodriguez, Secretary for Environmental Protection
John Chiang, State Controller, State Lands Commission Chair
Fran Pavley, State Senator
Toni Atkins, State Assemblymember
Geraldine Knatz, Public Member
Michael Brown, Public Member



MEMORANDUM

DATE: October 20, 2014
TO: Charles Lester, Coastal Commission
FROM: Catherine Kuhlman, Deputy Secretary *CK*
SUBJECT: MANAGEMENT OF ROUND TWO LOCAL COASTAL PROGRAM SEA-LEVEL RISE GRANT PROGRAM

The purpose of this memorandum is to memorialize the agreement that we have reached regarding the Coastal Commission ("Commission") managing the grants approved by the Ocean Protection Council ("OPC") as part of the second round of the OPC's Local Coastal Program (LCP) Sea-level Rise (SLR) Grant Program. The OPC staff have appreciated the Commission staff's efficiency and expertise in managing the Commission's LCP Local Assistance Grant Program and our partnership in developing and implementing the OPC's LCP SLR Grant Program, which has included developing a joint announcement and application process this year for the funding opportunities that our respective agencies have regarding LCP updates.

The OPC currently lacks staff capacity to administer the LCP SLR Grant Program; therefore, OPC staff reached out to Commission staff to request that the Commission enter into an interagency agreement with the California Natural Resources Agency, on behalf of the OPC, to administer and manage the grants awarded during this second round of the OPC's LCP SLR Grant Program. We appreciate your support and enthusiasm in discussing this partnership and we are pleased that we have reached an agreement. We believe that this approach will save the state money and deliver a more efficient process for the local grantees. Commission staff have the most expertise on the information needs to update LCPs and are already doing a great job coordinating with local governments on projects to update LCPs to address sea-level rise.

For the December 2014 OPC meeting, OPC staff intend to recommend that the Resources Agency enter into an interagency agreement with the Coastal Commission to provide grant administration, technical services and policy integration to ensure that sea-level rise vulnerability assessments are efficiently integrated into land use planning documents (such as LCPs) that are approved by the Commission for implementation of the Coastal Act. OPC staff intends to recommend that the Council authorize up to \$179,250 (15% of the grant amount) for Commission staff time over three years for performing this work for management of the second round of the OPC LCP SLR Grant Program.

We have appreciated the Commission staff's input and expertise in reviewing the applications for the joint applications and we are in agreement with Commission staff on our recommendations for funding for the projects that submitted applications to both the OPC and Commission. For the December 2014 OPC meeting, staff intends to recommend approval of the joint recommendations of OPC and Commission staff for the highest priority projects under the joint application process.

Exhibit 1
pg 1 of 1



SAN FRANCISCO PLANNING DEPARTMENT

October 27, 2014

Erik Howell
45 Fremont Street, Ste. 2000
San Francisco, CA 94105

Dear Commissioner Howell:

On behalf of the City and County of San Francisco, I want to thank you for your consideration of our request for Local Coastal Program Planning Grant funds. San Francisco is fully committed to a successful, coordinated, and collaborative process with the potential to significantly increase public access to the coast.

With support from the California Coastal Commission and the Ocean Protection Council, San Francisco would undertake a two-year process to collaborate with stakeholders to integrate the sea-level rise recommendations of the Ocean Beach Master Plan (2012) into an amendment of our Local Coastal Program (certified in 1986).

The proposed work would capitalize on the collaborative dialogue that has evolved during the Ocean Beach Master Plan's extensive stakeholder outreach process. Released in April 2012, the Ocean Beach Master Plan — a non-regulatory document produced in close coordination with a host of federal, state and local agencies; community stakeholders; and the public — articulates a vision for managing a changing coastline while protecting critical public infrastructure and significantly upgrading public access. The recommendations in the plan address the full range of coastal protection issues in San Francisco, including increasing public access, adapting to sea-level rise, protecting wastewater infrastructure, and protecting the environment.

Please find attached some additional photos to illustrate the existing and future proposed (Key Moves 1 and 2) landscape along our western shoreline as well as a revised budget based on California Coastal Commission staff comments on our grant application.

This is important and much needed work to ensure that our Local Coastal Program accounts for the significant changes along our coastline related to sea-level rise and charts a path forward to the long-term management and protection of San Francisco's coastal resources.

Sincerely,

A handwritten signature in blue ink, appearing to read "John Rahaim".

John Rahaim
Director of Planning

A handwritten signature in blue ink, appearing to read "D. Sokolove".

Diana Sokolove
Senior Planner

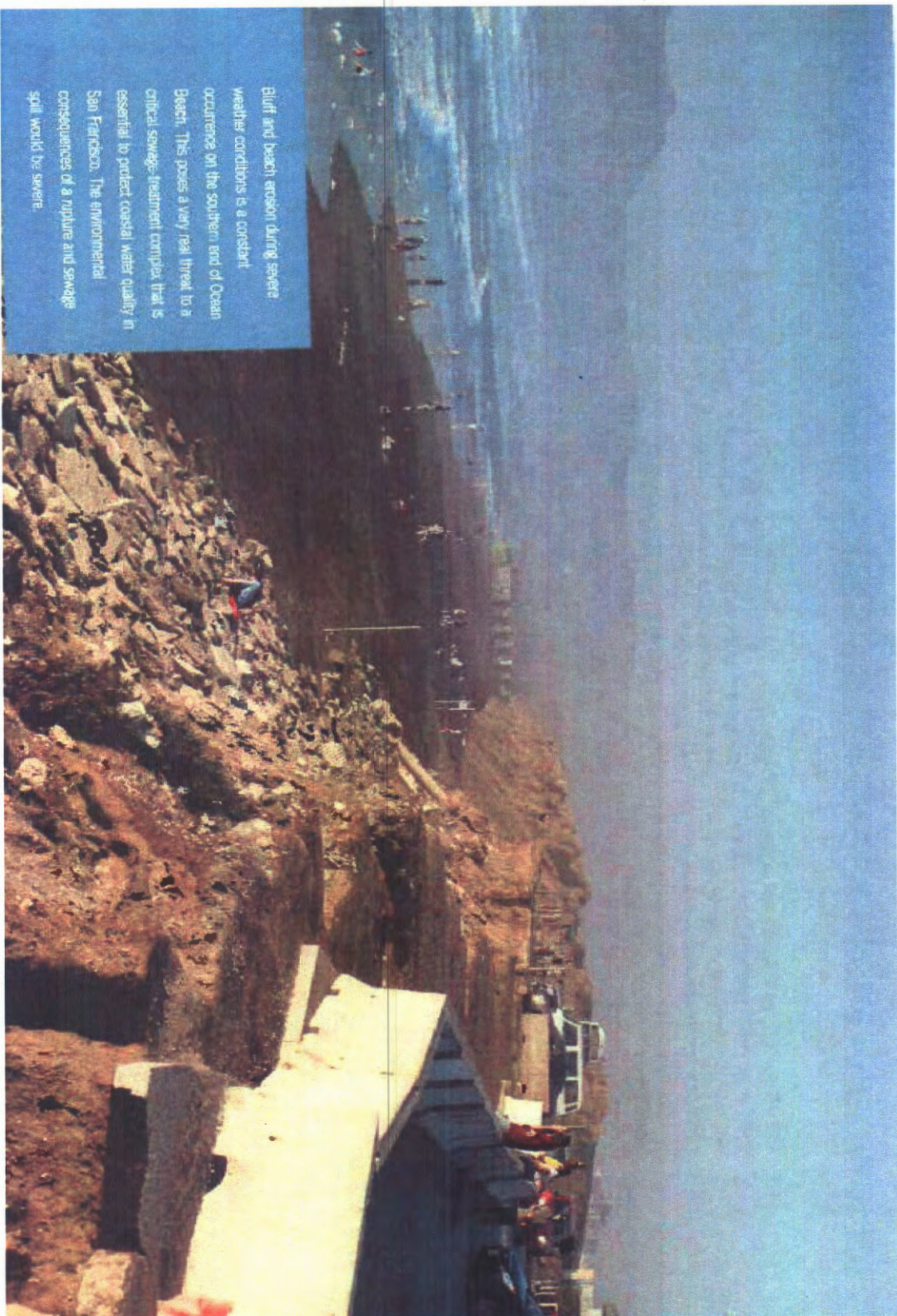
1650 Mission St.
Suite 400
San Francisco,
CA 94103-2479

Reception:
415.558.6378

Fax:
415.558.6409

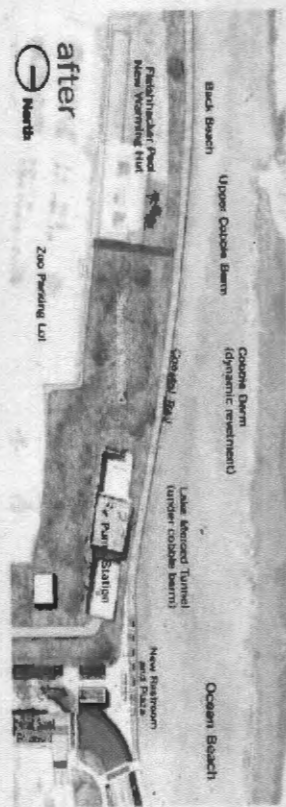
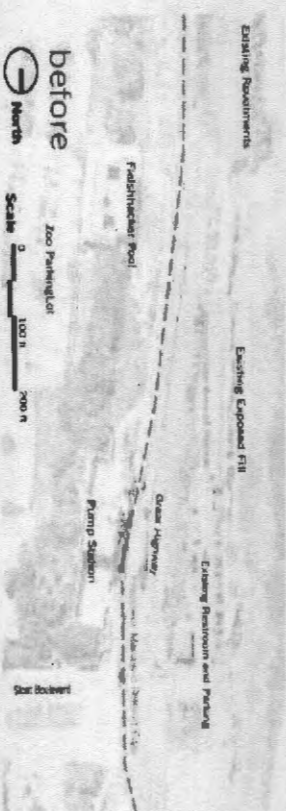
Planning
Information:
415.558.6377

Erosion At Ocean Beach

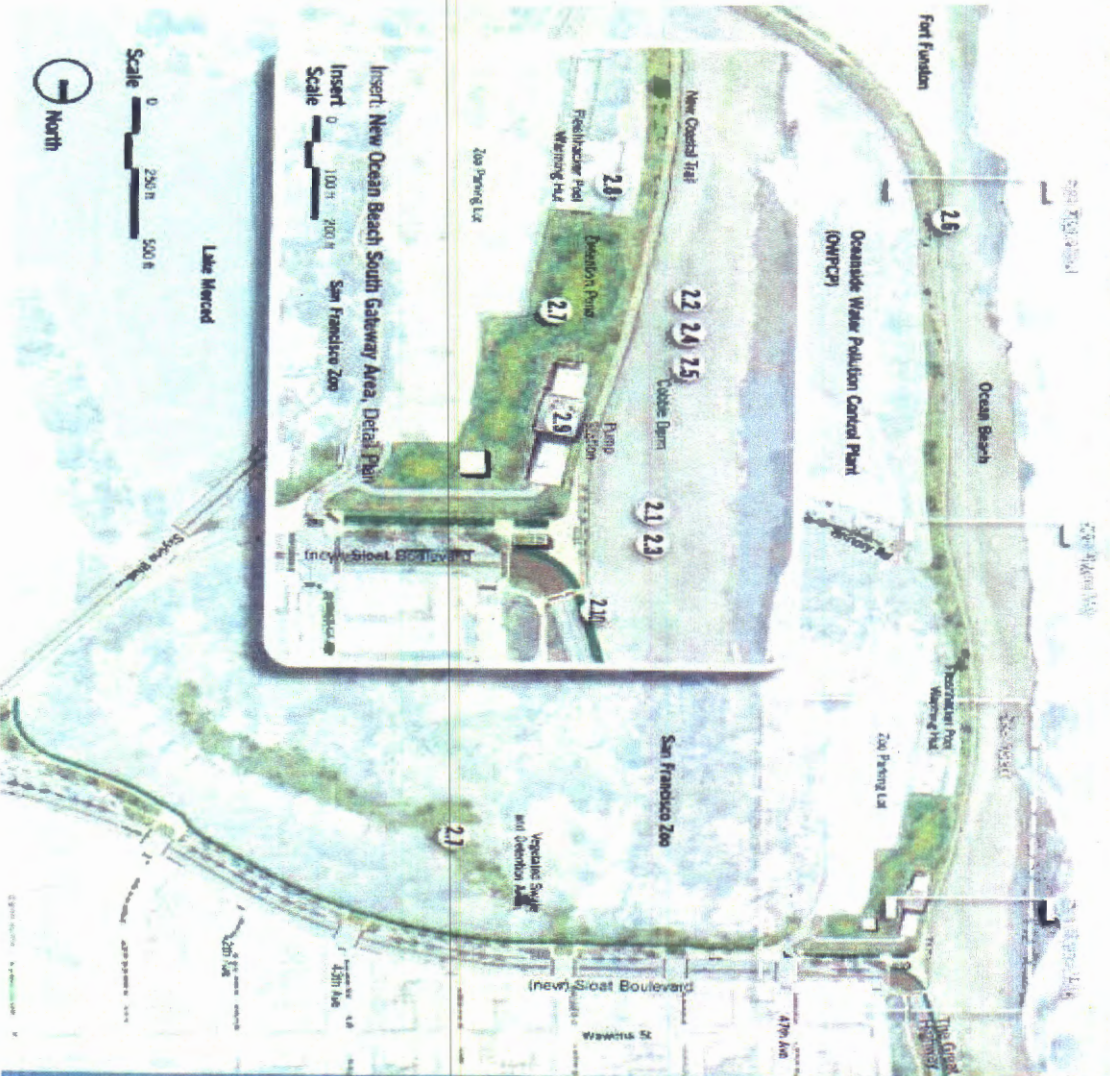


Key Move 1 from Ocean Beach Master Plan

PACIFIC OCEAN



Key Move 2 from Ocean Beach Master Plan



Key Move 2:

Introduce a multipurpose coastal protection/restoration/access system.

- 21 Withdraw from bluff edge; incrementally demolish roadway, parking and restroom at Shore.
- 22 Reinforce the Lake Merced Tunnel in place with a low-profile structure or internal piling; remove restraints and fill.
- 23 Develop and pursue best practices for beach nourishment, including sand placement by Army Corps of Engineers.
- 24 Place cobble beam over Lake Merced Tunnel structure, covered with sand, to serve as wave dissipation zone; allow severe storm surges to wash over tunnel.
- 25 Place additional cobble to protect pump station and other wastewater infrastructure.
- 26 Construct terraced, vegetated seawall with access to along Oceanwide Treatment Plant, incorporating tunnel structure, coastal trail, erodible bluff (Barn Swallow habitat) and plant driveway.
- 27 Create detention swale and constructed wetland through the zoo to passively clean and infiltrate stormwater runoff from Shore and adjacent parking lot.
- 28 Renovate Freshwater Pool house as a warming hut and interpretive center.
- 29 Pump station and force mains remain; interpretive elements explain the system to visitors; beautify pump station and reconfigure to maximize adjacent coastal access.
- 210 Conduct pilot studies of dynamic coastal protection.

Project Funding Sources by Task

Task Number	Task Name	Total Cost	Allocation of total cost among all funding sources			
			Applicant's Funding	CCC LCP Grant Funding	OPC SLR Grant Funding	Other Funds (define below)
1	Public and Agency Engagement	\$177,884	\$66,087	\$80,750	\$31,046	
2	Existing Data and Analyses	\$126,087	\$66,087		\$60,000	
3	Policy Development	\$79,910	\$66,087	\$13,823		
4	Approval Process	\$66,087	\$66,087			
TOTAL		\$449,969	\$264,350	\$94,573	\$91,046	\$0

Personnel	Hourly salary rate (through 6/30/16)	total hours (over 2 yr grant period)	Total salary cost	CCC Indirect costs (10%) [1]	OPC Indirect costs (25%) [1]	Fringe Benefits [2]	Applicant's Funding	CCC Grant Funding	OPC Grant Funding	Other Funds
Salaries and wages¹										
Diana Sokolova, 5293 Planner IV	\$62,0791	1040	\$64,562.23	-	-	\$30,667.06	\$95,229.28			
Chris Kern, 5299 Envir Planner IV	\$62,0791	208	\$12,912.45	-	-	\$6,133.41	\$19,045.86			
TBD, 5278 Planner II	\$44,1136	2080	\$91,756.21	-	-	\$43,584.20	\$135,340.41			
GIS/Graphics, 5278 Planner II	\$44,1136	208	\$9,175.62	-	-	\$4,358.42	\$13,534.04			
Anna Roche (SFPUC), 5602 Utility Specialist	\$62,6469	100	\$6,264.69	-	\$1,566.17	\$2,505.88			\$10,336.74	
TBD (SFMIA), Staff	\$60,0000	100	\$6,000.00	-	\$1,500.00	\$2,400.00			\$9,900.00	
Frank Filice (SFPDW), 0931 Manager III	\$65,5125	100	\$6,551.25		\$1,637.81	\$2,620.50			\$10,809.56	
Andrea Ruiz Esquide (City Attorney)	\$102,3900	90	\$9,215.10	\$921.51		\$3,686.04		\$13,822.65		
Total Personnel							\$263,149.59	\$13,822.65	\$31,046.31	\$ -
Consultants										
TBD Consultant: Outreach Facilitator								\$ 60,000.00		
TBD Consultant: Data Synthesis, Response to Comments								\$ 15,000.00	\$ 60,000.00	
SPUR								\$ 75,000.00	\$ 60,000.00	\$ -
Total Consultants							\$ -	\$ 150,000.00	\$ 120,000.00	\$ -
Operating Expenses										
Printing & Postage for meeting notification (15,000 * .25)									\$ 3,750.00	
Supplies/Materials										
facility rental (8 meetings * \$250)							\$ 1,200.00		\$ 2,000.00	
refreshments (8 meetings * \$150)							\$ 1,200.00	\$ 5,750.00	\$ -	\$ -
Total Operating Expenses							\$ 2,400.00	\$ 5,750.00	\$ -	\$ -
Total Budget							\$ 264,349.59	\$ 94,572.65	\$ 91,046.31	\$ -
Total Project Cost							\$ 449,968.55			

¹¹ Indirect costs include, for example, a pro rata share of rent, utilities, and salaries for certain positions indirectly supporting the proposed project but not directly staffing it. Per 8/8/14 email from CCC staff, a indirect cost limit for Coastal Commission funds is 10% of total personnel costs, and the limit for OPC funds is 25% of total direct costs.

¹² Amount requested for benefits is 40% of amount requested for salary. The fringe rate applied to Planning staff, which is being funded through the applicant's match, is 47.5%.