

CALIFORNIA COASTAL COMMISSION

South Coast Area Office
200 Oceangate, Suite 1000
Long Beach, CA 90802-4302
(562) 590-5071



F8a

5-16-0298 (ARVIELO)

MAY 12, 2017

EXHIBITS

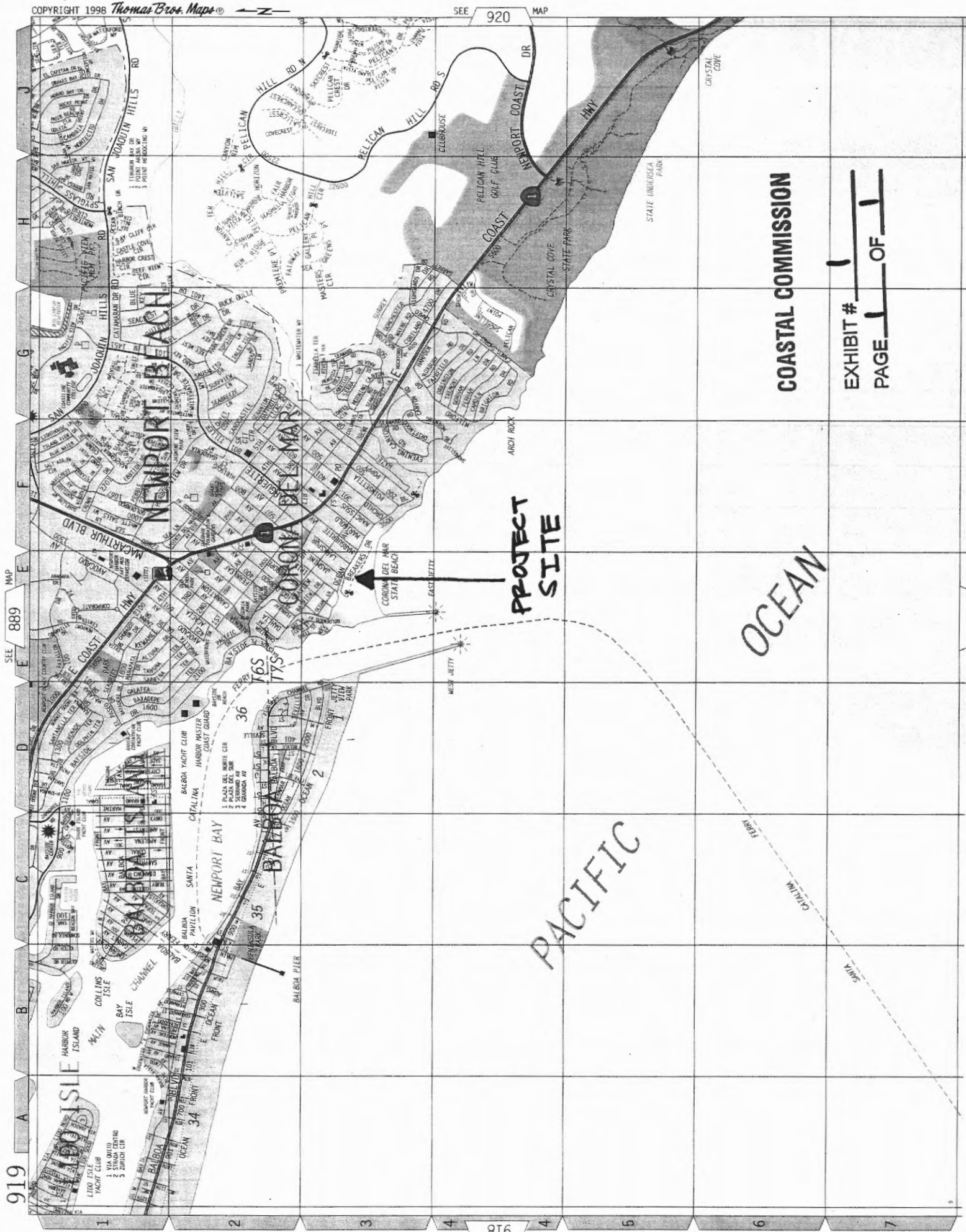
Table of Contents

Exhibit 1 – Location Map

Exhibit 2 – Site Plan

Exhibit 3 – Floor Plans

Exhibit 4 – Elevation Plans



COASTAL COMMISSION

EXHIBIT # 1
PAGE 1 OF 1

PROTECT
SITE

OCEAN

PACIFIC

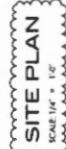
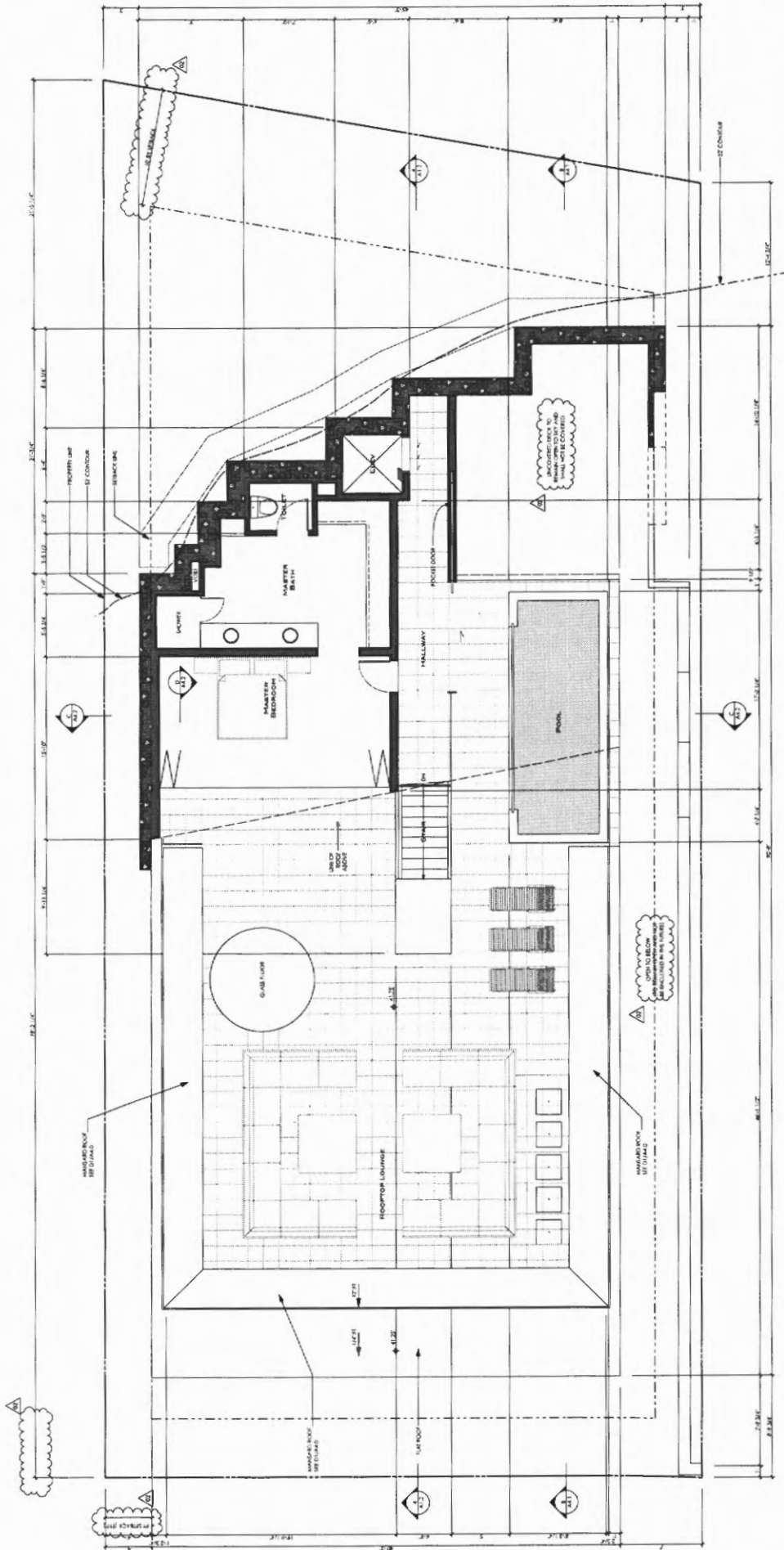


EXHIBIT # 2

3100 BREAKERS DRIVE, NEWPORT BEACH, CA 92660



COASTAL COMMISSION

EXHIBIT # 3
PAGE 4 OF 5

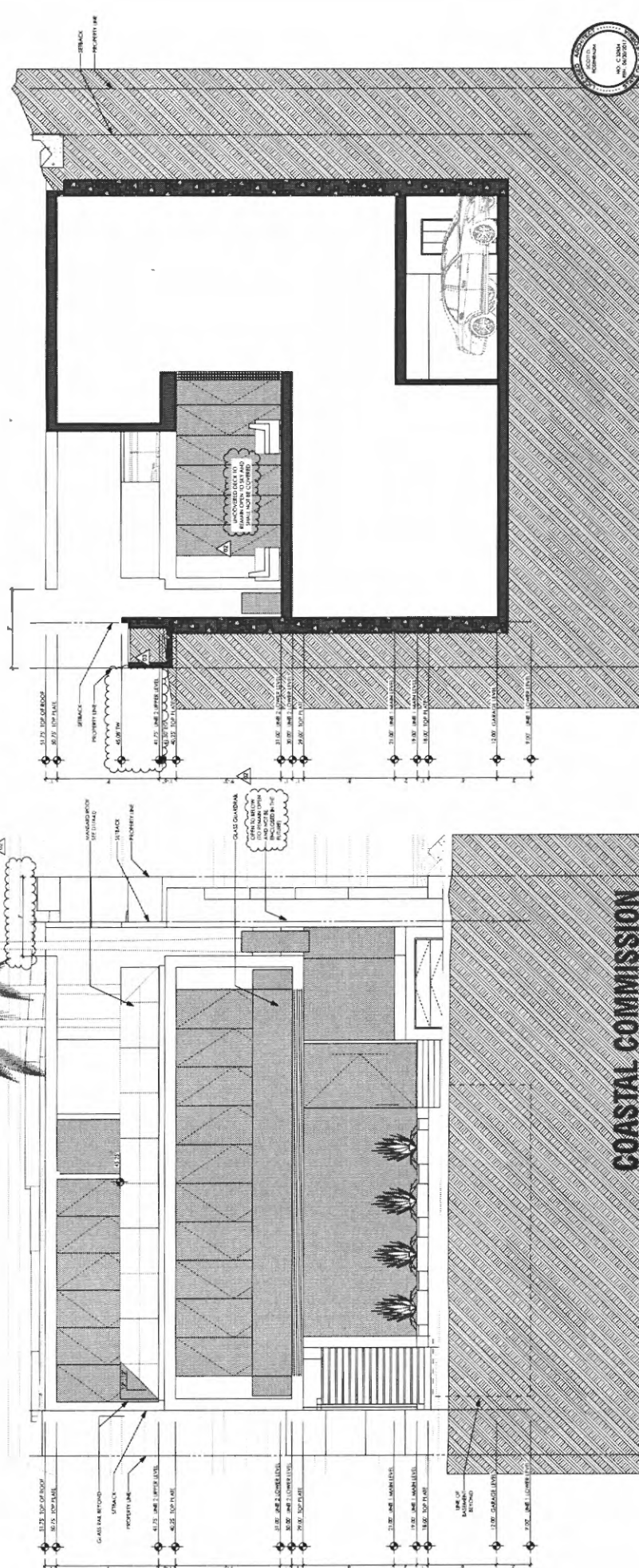
UNIT 2 UPPER LEVEL
SCALE: 1/8" = 1'-0"

UNIT 2 UPPER LEVEL - BREAKERS
3100 BREAKERS DRIVE, NEWPORT BEACH CA
PLAN NORTH
A2.3

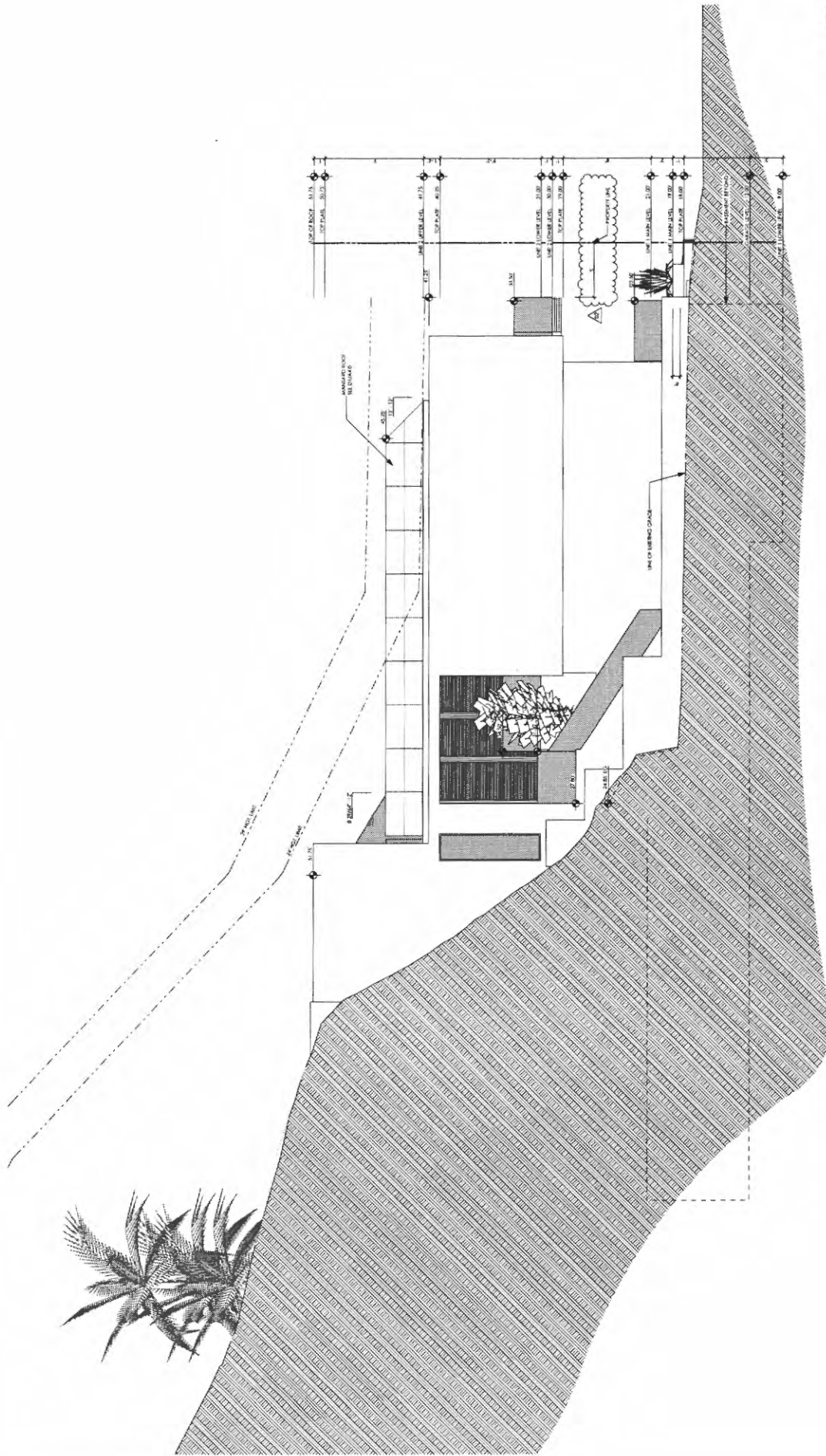
sumich design geoff sumich design geoff sumich design geoff sumich design geoff sumich design geoff sumich design geoff sumich design geoff



NO.	DATE	REVISIONS
1	10/1/01	Initial Design
2	10/1/01	Revised Design
3	10/1/01	Final Design

A3.0
10-Z4-2016

3100 BREAKERS DRIVE, NEWPORT BEACH CA 92660



COASTAL COMMISSION

EXHIBIT # 4
PAGE 2 OF 3

WEST EXTERIOR ELEVATION
SCALE 1/8" = 1'-0"

WEST EXTERIOR ELEVATION - BREAKERS
3100 BREAKERS DRIVE, NEWPORT BEACH CA



DATE	10-24-2016
BY	Sumich Design Group, Inc.
CHECKED	Sumich Design Group, Inc.
APPROVED	Sumich Design Group, Inc.

A3.1
sumich design group, inc. 3100 Breakers Drive, Newport Beach, CA 92660
sumich design group, inc. 3100 Breakers Drive, Newport Beach, CA 92660

