

CALIFORNIA COASTAL COMMISSION

NORTH COAST DISTRICT OFFICE
1385 8th STREET, SUITE 130
ARCATA, CA 95521
VOICE (707) 826-8950
FACSIMILE (707) 826-8960



Th8a

CDP APPLICATION NO. 1-16-0238

(HUMBOLDT COUNTY DEPT. OF PUBLIC WORKS)

JUNE 8, 2017

EXHIBITS

Table of Contents

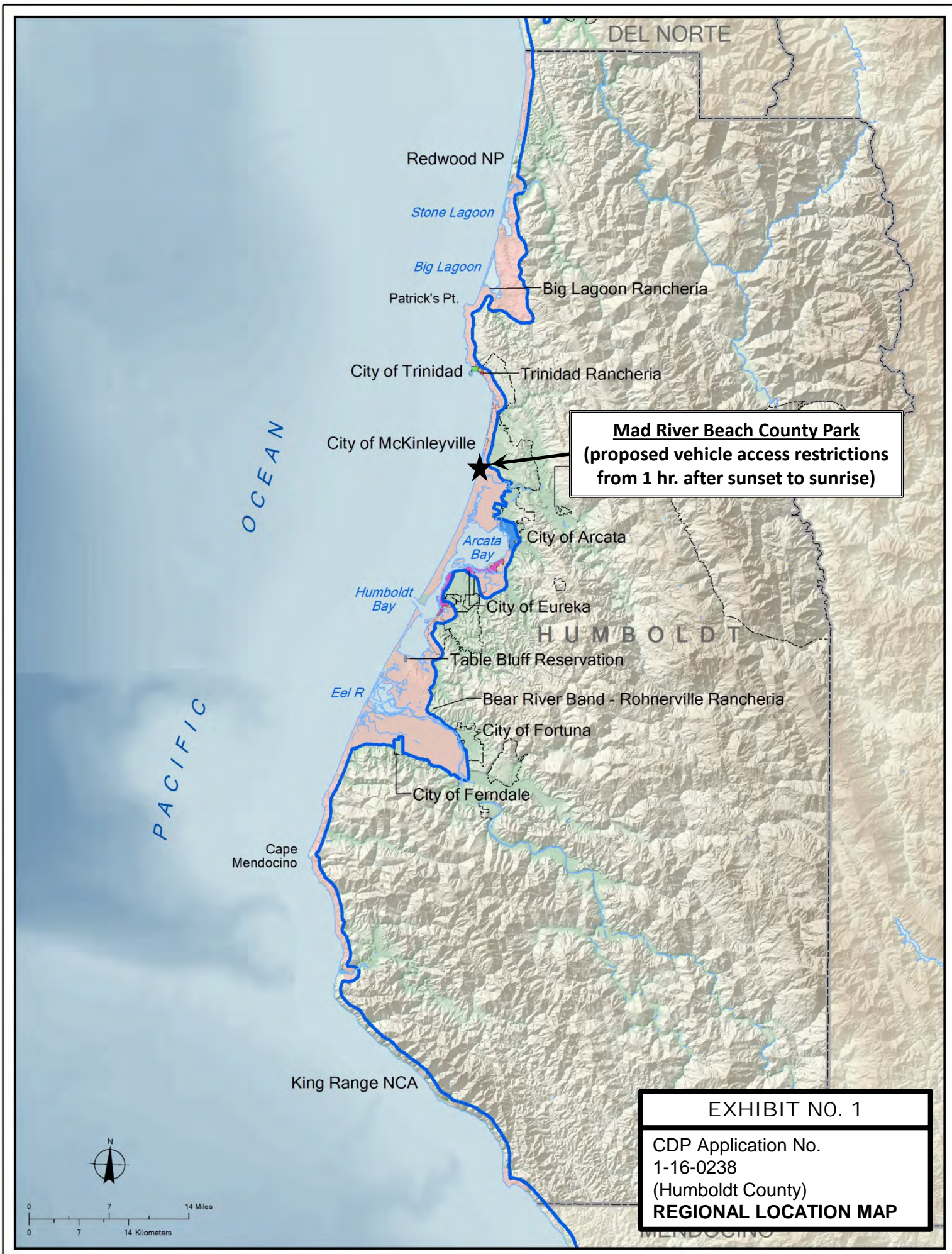
Exhibit 1 – [Regional Location Map](#)

Exhibit 2 – [Location Map](#)

Exhibit 3 – [Proposed Plans](#)

Exhibit 4 – [Proposed resolution adopting new parking restrictions](#)

Exhibit 5 – [Resolution 16-28 to be rescinded](#)



DEL NORTE

Redwood NP

Stone Lagoon

Big Lagoon

Patrick's Pt. Big Lagoon Rancheria

City of Trinidad Trinidad Rancheria

City of McKinleyville

Mad River Beach County Park
(proposed vehicle access restrictions
from 1 hr. after sunset to sunrise)

Arcata Bay City of Arcata

Humboldt Bay City of Eureka

HUMBOLDT

Table Bluff Reservation

Bear River Band - Rohnerville Rancheria

City of Fortuna

City of Ferndale

Cape Mendocino

King Range NCA

PACIFIC OCEAN

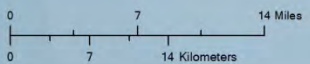


EXHIBIT NO. 1
CDP Application No.
1-16-0238
(Humboldt County)
REGIONAL LOCATION MAP

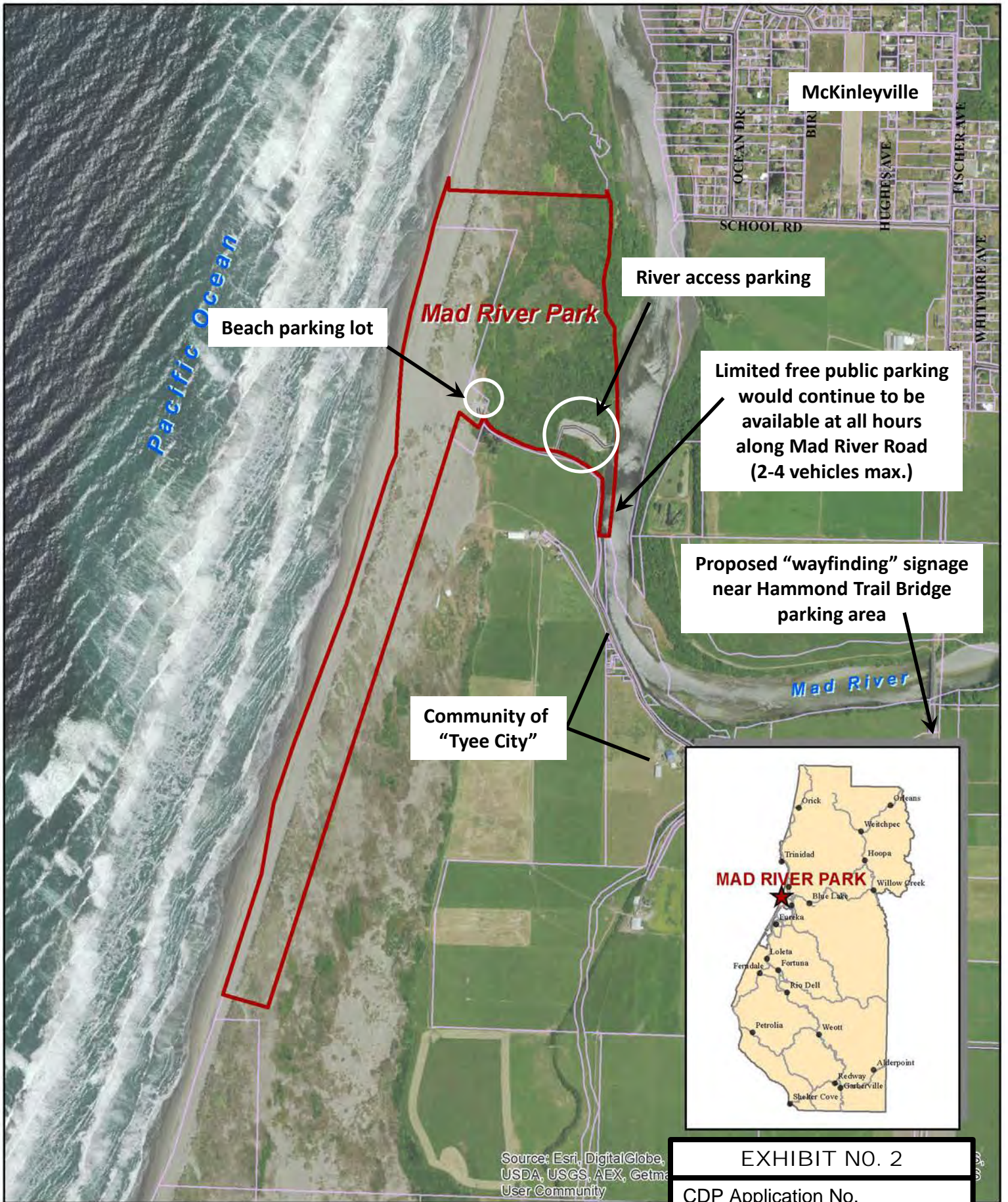


EXHIBIT NO. 2

CDP Application No.
1-16-0238
(Humboldt County)
VICINITY MAP

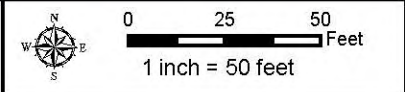


Source: Esri, DigitalGlobe, USDA, USGS, AEX, Getmap, User Community

EXHIBIT NO. 3
CDP Application No. 1-16-0238 (Humboldt County)
PROPOSED PLANS
Page 1 of 3

Proposed Park Entrance Improvements

Imagery: ESRI
Created: February 7, 2017
Humboldt County Public Works



02/16/17

Mad River Park Wayfinding Signage

Existing

Proposed

01 Giuntoli and Heindon

Panel Size
TBD

Panel Material
Aluminum



02 Heindon and Miller

Panel Size
TBD

Panel Material
Aluminum



03 Mad River Road at H/MR Bridge

Panel Size
TBD

Panel Material
Aluminum,



EXHIBIT NO. 3

PROPOSED PLANS
Page 2 of 3

Mad River Park

Welcome/Entryway Signage

04 Approach to Mad River Park

Panel Size
24" X 36"

Panel Material
Wood

Existing



Proposed



EXHIBIT NO. 3

PROPOSED PLANS

Page 3 of 3

BOARD OF SUPERVISORS, COUNTY OF HUMBOLDT, STATE OF CALIFORNIA

Certified copy of portion of proceedings, Meeting of [DATE]

RESOLUTION NO. _____

RESOLUTION AMENDING RESOLUTION NO. 16-28 BY ADOPTING REGULATIONS OF THE PUBLIC WORKS DEPARTMENT SPECIFYING THE HOURS THAT VEHICLES ARE ALLOWED IN MAD RIVER COUNTY PARK

WHEREAS, on March 5, 2002, the Humboldt County Board of Supervisors adopted Title II, Division 7, Chapter 1 of the Humboldt County Code governing activities in County Parks; and

WHEREAS, Section 271-9(a) provides that the hours that various County Parks are open to the public are set by resolution adopted by the Board of Supervisors; and

WHEREAS, Section 271-22 authorizes the Director to issue such rules and regulations as he deems necessary and appropriate, subject to adoption by Resolution of the Board of Supervisors; and

WHEREAS, on March 1, 2016, the Board of Supervisors adopted Resolution No. 16-28 specifying that Mad River County Park shall be open to the public for day-use only (from sunrise to sunset), in order to improve public safety and curtail inappropriate conduct; and

WHEREAS, changes in the intensity of land use are defined by the Coastal Act as forms of development which necessitate a coastal development permit from the California Coastal Commission; and

WHEREAS, Coastal Commission staff indicated that the changes described in Resolution No. 16-28 are inconsistent with the Coastal Act's mandate to maximize public access and would be recommended for denial of a coastal development permit; and

WHEREAS, Public Works proposes to create a gated entrance at Mad River County Park and to restrict vehicle use within the park to the hours from sunrise to one hour after sunset; and

WHEREAS, the Board of Supervisors has reviewed the proposed regulations and finds that they are consistent with the intent and purpose of Chapter 1, of Division 7, of Title II of the Humboldt County Code.

NOW, THEREFORE, BE IT RESOLVED, BY THE HUMBOLDT COUNTY BOARD OF SUPERVISORS THAT:

1. Resolution No. 16-28 is hereby rescinded.
2. Mad River County Park shall be closed to vehicles from one hour after sunset until sunrise, except that Public Works shall take reasonable measures to accommodate exceptions for commercial fishermen, handicapped persons, and senior citizens consistent with Section 917-4 of Title IX, Division 1, Chapter 7 of the Humboldt County Code.

Adopted on motion by Supervisor _____, seconded by Supervisor _____, and the following vote:

AYES:
NOES:
ABSENT:
ABSTAIN:

STATE OF CALIFORNIA

EXHIBIT NO. 4
CDP Application No. 1-16-0238 (Humboldt County) PROPOSED RESOLUTION ADOPTING NEW PARKING REGULATIONS

BOARD OF SUPERVISORS, COUNTY OF HUMBOLDT, STATE OF CALIFORNIA

Certified copy of portion of proceedings, Meeting of March 1, 2016

RESOLUTION NO. 16-28

RESOLUTION AMENDING RESOLUTION NO. 03-56 BY ADOPTING REGULATIONS OF THE PUBLIC WORKS DEPARTMENT SPECIFYING THE HOURS THAT MAD RIVER COUNTY PARK IS OPEN TO THE PUBLIC

WHEREAS, on March 5, 2002, the Humboldt County Board of Supervisors adopted Title 2, Division 7, Chapter 1 of the Humboldt County Code governing activities in County Parks; and

WHEREAS, Section 271-9(a) provides that the hours that various County Parks are open to the public are set by resolution adopted by the Board of Supervisors; and

WHEREAS, on May 20, 2003, the Humboldt County Board of Supervisors adopted Resolution No. 03-56 which specifies that day-use parks and day-use park areas (other than Freshwater County Park and Table Bluff County Park) are open from 5:00 a.m. to midnight; and

WHEREAS, Section 271-22 authorizes the Director to issue such rules and regulations as he deems necessary and appropriate, subject to adoption by Resolution of the Board of Supervisors; and

WHEREAS, the Board of Supervisors has reviewed the proposed regulations and finds that they are consistent with the intent and purpose of Chapter 1, of Division 7, of Title II of the Humboldt County Code.

NOW, THEREFORE, BE IT RESOLVED by the Humboldt County Board of Supervisors that :

1. Mad River County Park shall be open to the public for day-use only from sunrise to sunset.
2. Exceptions to the hours of operation at Mad River County Park are permitted only by obtaining written permission from the Director of Public Works.

Dated: March 1, 2016



MARK LOVELACE, Chair
Humboldt County Board of Supervisors

Adopted on motion by Supervisor Fennell, seconded by Supervisor Bass, and the following vote:

AYES:	Supervisors	Sundberg, Fennell, Lovelace, Bohn, Bass
NAYS:	Supervisors	--
ABSENT:	Supervisors	--
ABSTAIN:	Supervisors	--

EXHIBIT NO. 5

CDP Application No.
1-16-0238
(Humboldt County)
**COUNTY RESOLUTION 16-28
TO BE RESCINDED**