

CALIFORNIA COASTAL COMMISSION

CENTRAL COAST DISTRICT OFFICE
725 FRONT STREET, SUITE 300
SANTA CRUZ, CA 95060
PHONE: (831) 427-4863
FAX: (831) 427-4877
WEB: WWW.COASTAL.CA.GOV



W19a

CIH-NOID-0002-17

(VENTURA COUNTY CHANNEL ISLANDS HARBOR)

JUNE 7, 2017

EXHIBITS

Table of Contents

Exhibit 1	Vicinity Map
Exhibit 2	Aerial Overview
Exhibit 3	Site Plan
Exhibit 4	Trailer Details
Exhibit 5	PWP Land Use Map
Exhibit 6	PWP Existing and/or Proposed Recreation/Access/Visitor Serving Facilities Map

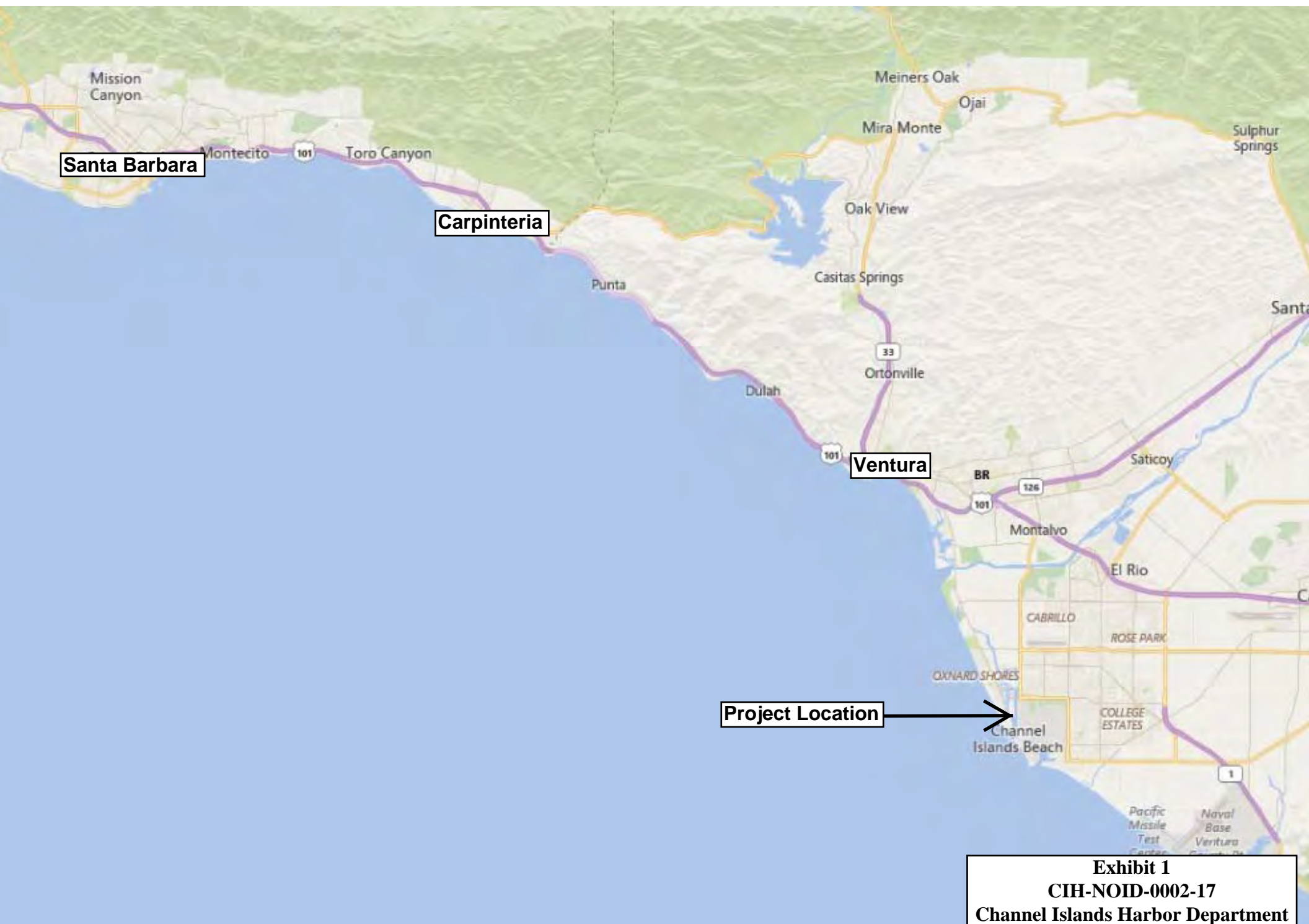


Exhibit 1
CIH-NOID-0002-17
Channel Islands Harbor Department
Vicinity Map



W Channel Islands

Project Location

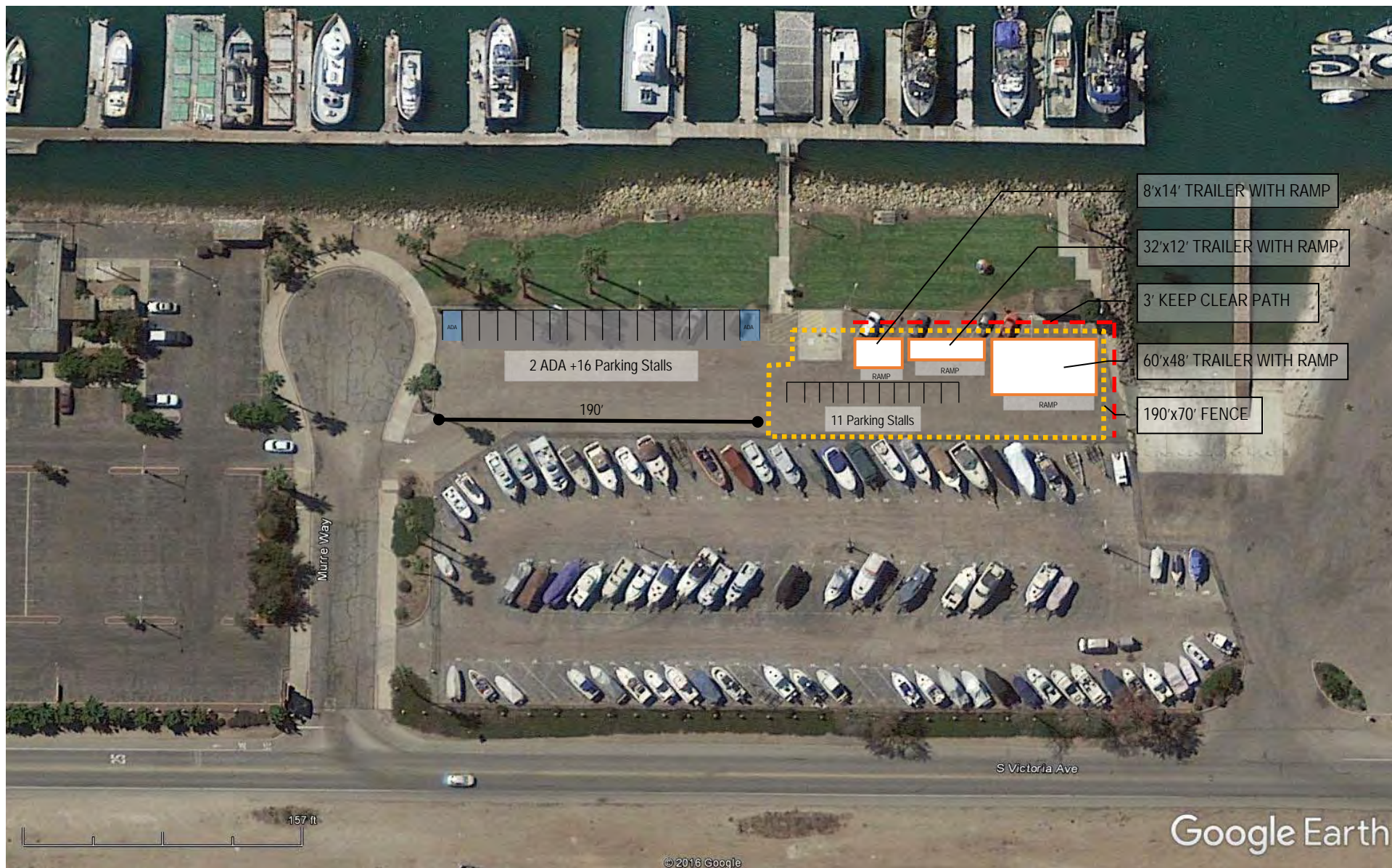
Exhibit 2
CIH-NOID-0002-17
Channel Islands Harbor Department
Aerial Overview



3000 ft

Google earth

© 2016 Google



Administration Office Relocation

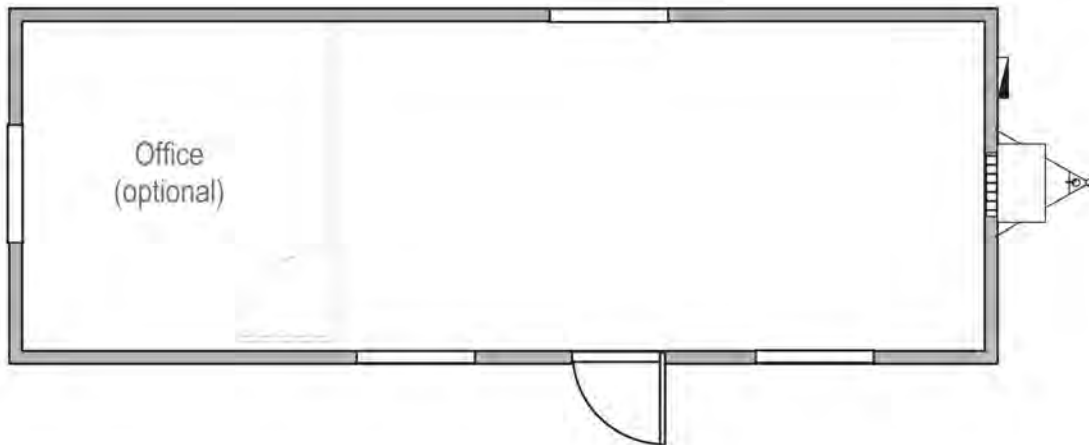
May 1, 2017

Exhibit 3
CIH-NOID-0002-17
Channel Islands Harbor Department
Site Plan

Floor Plan:

12'x32' Office

Floor plans may vary according to building model, size and specifications.
Interior partitioning is optional and fully customizable.



Optional interior walls shown and may include additional costs.

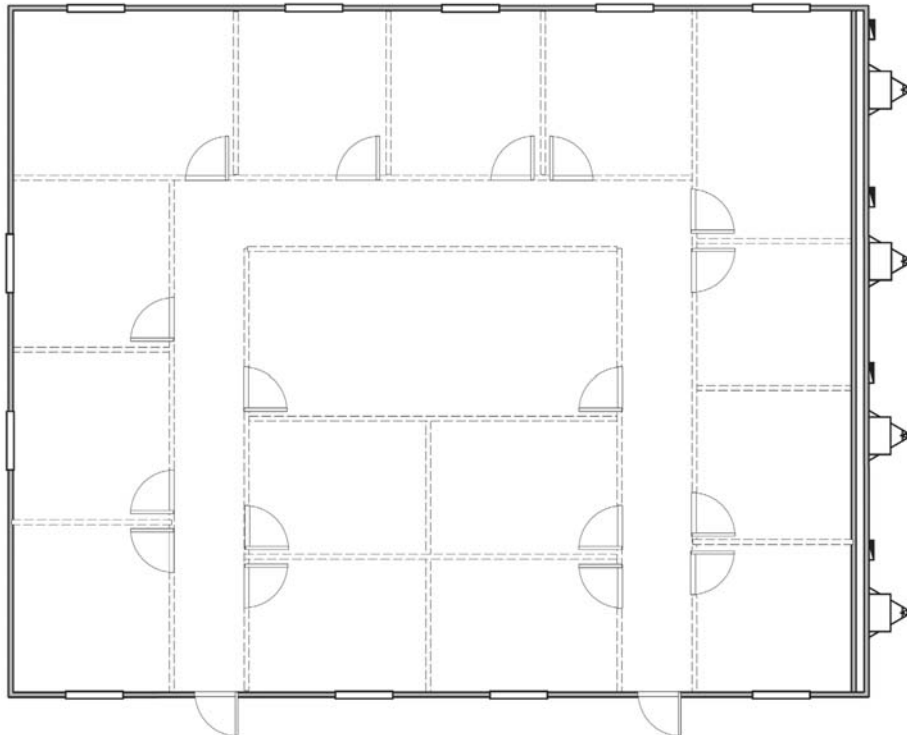
SPECIFICATIONS:

- Ducted heating and air conditioning
- Commercial grade carpet or tile floors
- Vinyl wrap interior walls
- Metal entry doors with deadbolts
- Acoustical sound dampening ceilings
- State approved commercial building

Floor Plan:

48'x60' Office

Floor plans may vary according to building model, size and specifications.
Interior partitioning is optional and fully customizable.



Optional interior walls shown and may include additional costs.

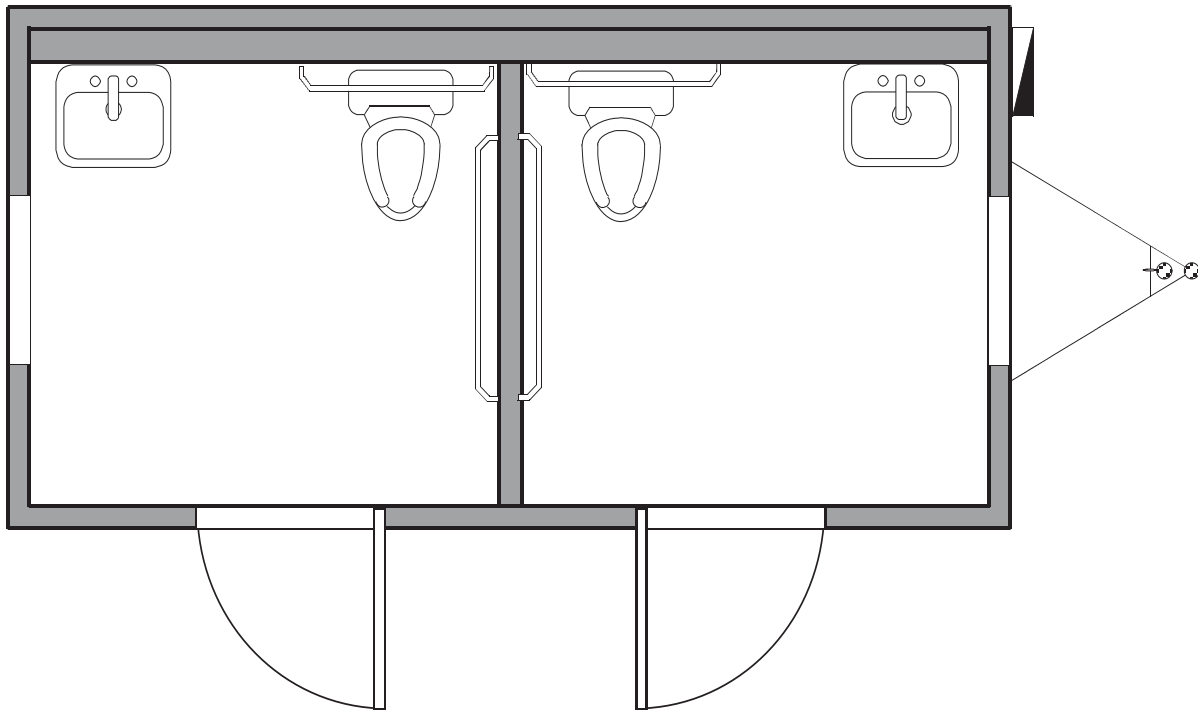
SPECIFICATIONS:

- Ducted heating and air conditioning
- Commercial grade carpet or tile floors
- Vinyl wrap interior walls
- Metal entry doors with deadbolts
- Acoustical sound dampening ceilings
- State approved commercial building

Floor Plan:

8'x16' Restroom

Floor plans may vary according to building model, size and specifications.



SPECIFICATIONS:

- Heating system
- Commercial grade linoleum floors
- FRP moisture resistant interior walls
- Metal entry doors with deadbolts
- Acoustical sound dampening ceilings
- State approved commercial building

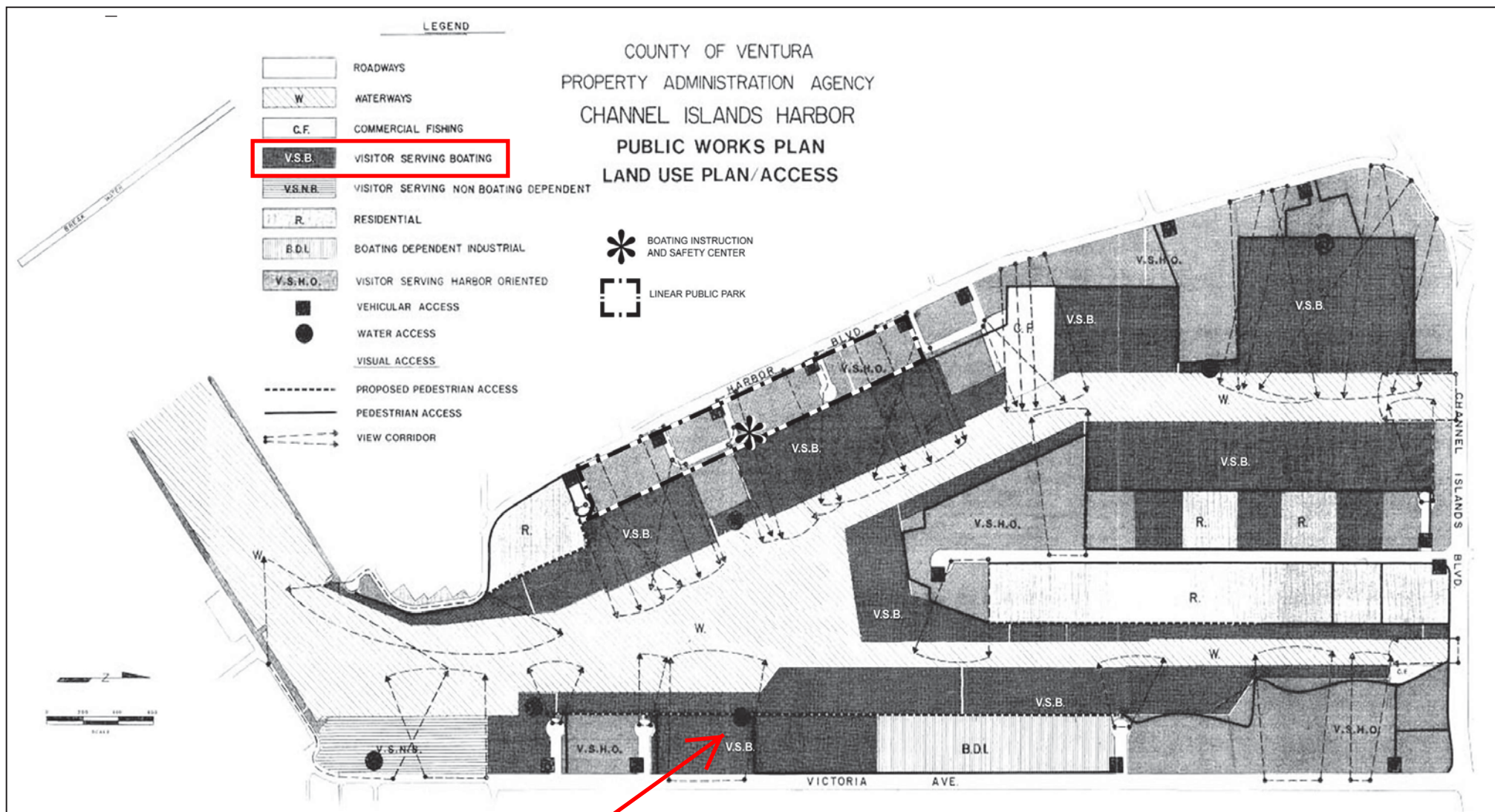


Exhibit E This map shall only be used to reference landside parcels in the Harbor. The waterside portions of this map are no longer applicable. The Master Plan Marina Map in Appendix C applies only to the waterside parcels.

Project Location

CHANNEL ISLANDS HARBOR

EXISTING AND/OR PROPOSED RECREATION/ACCESS/VISITOR-SERVING FACILITIES

