

CALIFORNIA COASTAL COMMISSION

South Coast Area Office
200 Oceangate, Suite 1000
Long Beach, CA 90802-4302
(562) 590-5071



Th14b

5-16-0229 (CITY OF NEWPORT BEACH, BAYVIEW HEIGHTS)

JULY 13, 2017

EXHIBITS

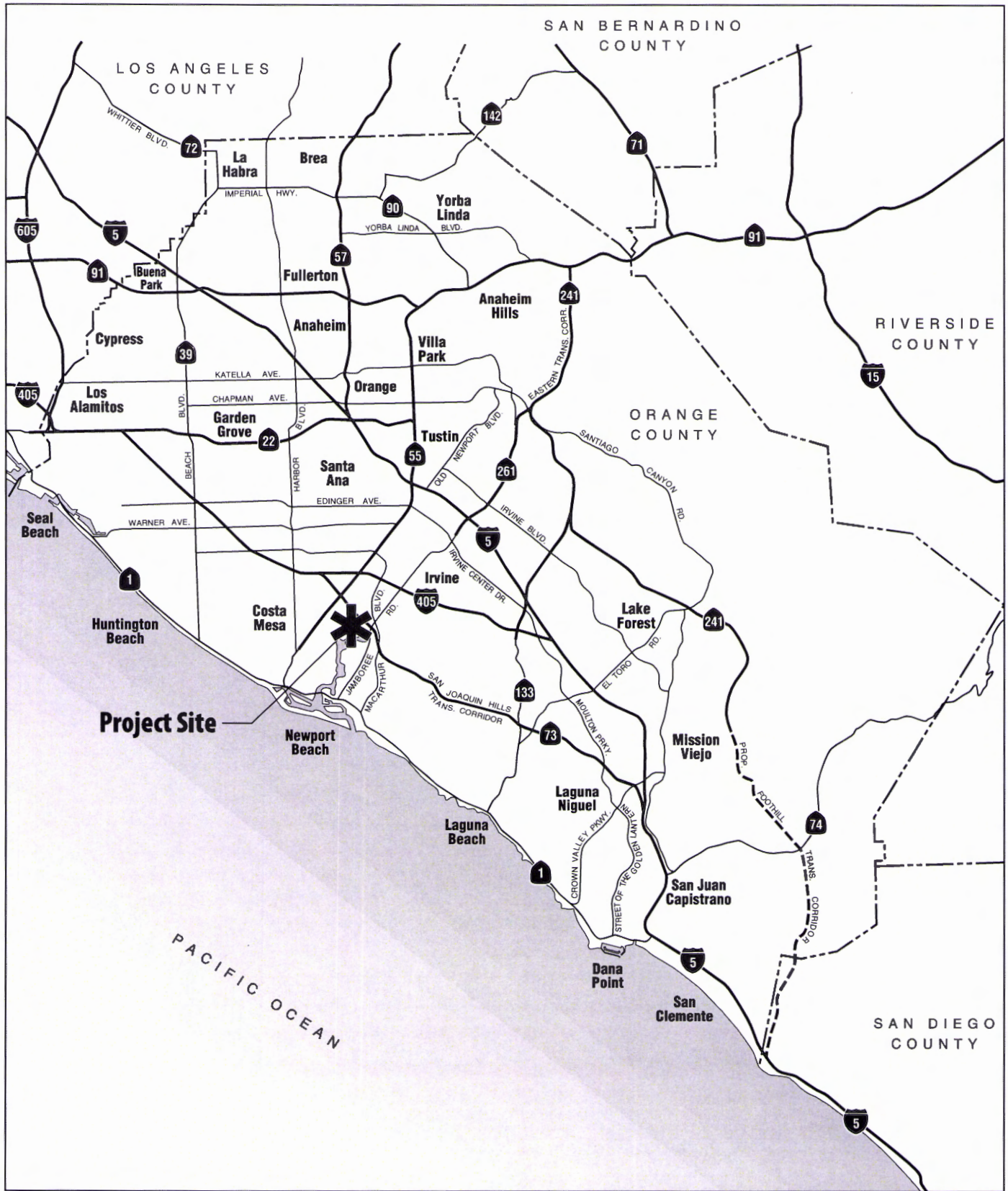
Table of Contents

Exhibit 1 – Vicinity Map/Project Location

Exhibit 2 – Site Plans

Exhibit 3 – Jurisdictional Impact Map

Exhibit 4 – Landscaping Plan



COASTAL COMMISSION

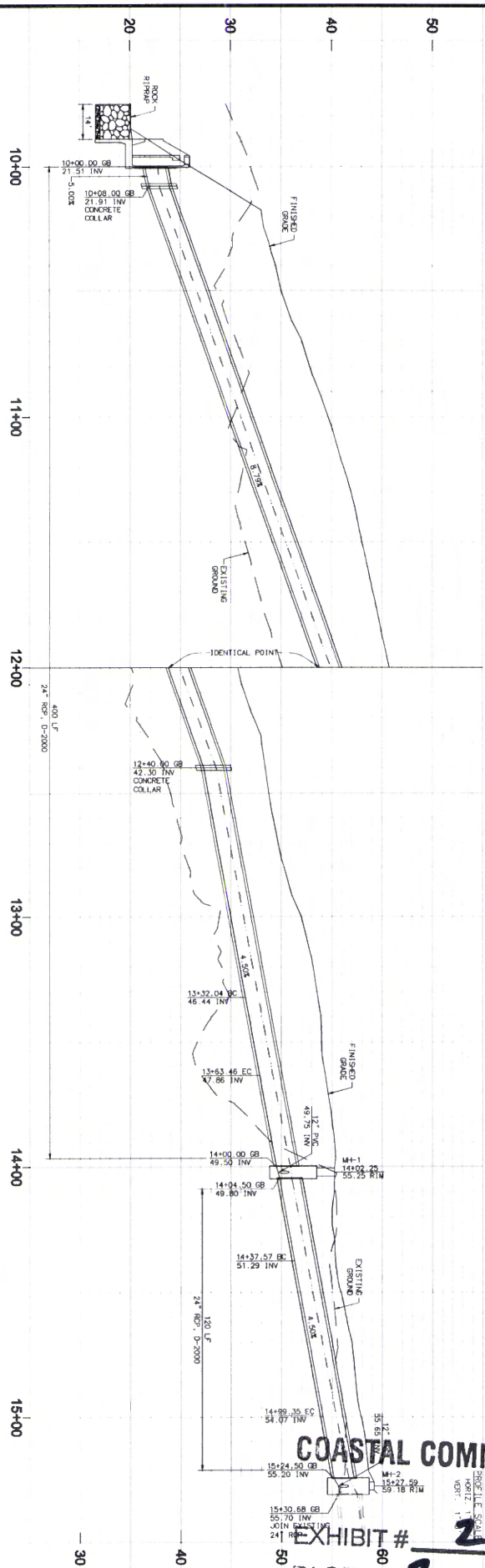
***** Project Site

BAYVIEW HEIGHTS DRAINAGE RESTORATION PROJECT
EXHIBIT # 1 **Regional Vicinity**

PAGE 1 **OF** 1

Exhibit 1





COASTAL COMMISSION

EXHIBIT # **2**
PAGE **2** OF **8**

CURVE DATA TABLE

NO.	DELTA	RADIUS	LENGTH	TANGENT
C1	20°00'00"	90.00'	31.42'	15.87'
C2	39°19'59"	90.00'	61.78'	32.17'

LINE DATA TABLE

NO.	BEARING	LENGTH
L1	N15°00'00"E	250.04'
L2	N05°00'00"E	74.11'
L3	N4°19'59"W	31.33'

CONSTRUCTION NOTES

1. PROTECT IN PLACE
2. CONSTRUCT JUNCTION STRUCTURE-TYPE 1 PER DOW STD PLAN 321-2
3. INSTALL 24" RCP PER DOW STD PLAN 319, D-LOAD PER PERMITS
4. CONSTRUCT PRE CAST COLLAR PER DOW STD PLAN 380-4
5. CONSTRUCT ENERGY DISSIPATOR STRUCTURE PER SPWC STD PLAN 384-2 AND DETAILS ON SHEET 8
6. CONSTRUCT 1/4-TON ROCK RIPRAP PER DOW STD PLAN 1609 AND DETAIL ON SHEET 9
7. INSTALL 12" PVC (SLO 40)
8. INSTALL 24" INDIANAST DRAIN BASIN WITH DOCK GATE AND LOCKING ASSEMBLY PER DETAIL ON SHEET 9
9. INSTALL CONCRETE FLARED END SECTION PER DOW STD PLAN 384-2
10. CONSTRUCT MODIFIED JUNCTION STRUCTURE-TYPE 1 PER DOW STD PLAN 321-2 AND DETAIL ON SHEET 9

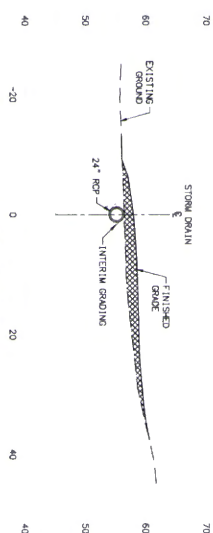
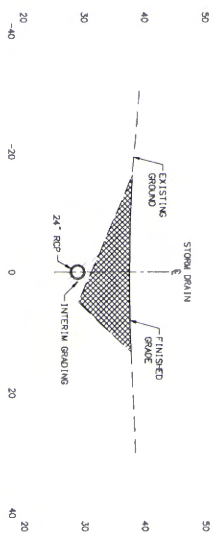
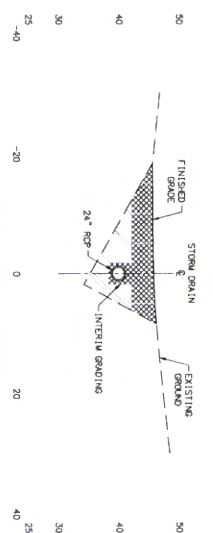
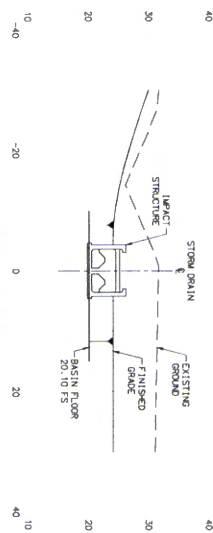


Michael Baker International
14000 River Drive, Suite 300
Brea, CA 92605
Phone: 949.472.2005
Fax: 949.472.2006
www.mbakercorp.com

REVIEWED BY: **Michael Baker International** DATE: **06/19/17**

DATE	BY	DESCRIPTION OF REVISIONS

BAYVIEW HEIGHTS DRAINAGE RESTORATION PROJECT
STORM DRAIN IMPROVEMENT PLAN AND PROFILE
CITY OF NEWPORT BEACH
PUBLIC WORKS DEPARTMENT
SHEET 4 OF 11



- | | |
|---|-------------------------|
|  | INTERIM CUT SECTION |
|  | INTERIM FILL SECTION |
|  | FINAL SITE FILL SECTION |



P.A.N. PREPARED BY						BAYVIEW HEIGHTS DRAINAGE RESTORATION PROJECT							
Michael Baker International						PIPE CROSS SECTIONS							
1 Hudson Drive, Suite 600 Hudson, Ohio 44133-9999 Phone (440) 721-5555 Fax (440) 721-5555 VBA@MINTL.COM													
REVISIONS													
REVISED BY													
DATE													
E.C. 39/37													
DATE													
DESCRIPTION OF REVISIONS													
APP'D													
DESIGNED BY													
CHECKED BY													
CITY OF NEWPORT BEACH						X-XXXX-X-							
PUBLIC WORKS DEPARTMENT						SHEET 5 OF 11							

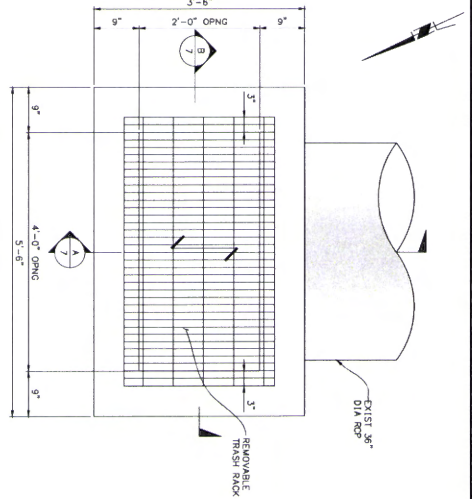
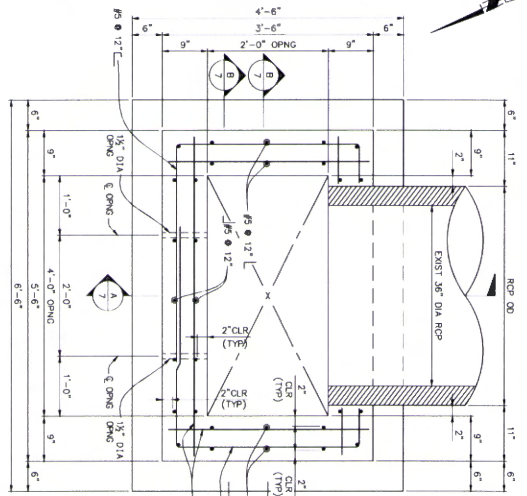
COASTAL COMMISSION

EXHIBIT # 2
PAGE 3 OF 8

EXHIBIT # 2
PAGE 4 OF 8



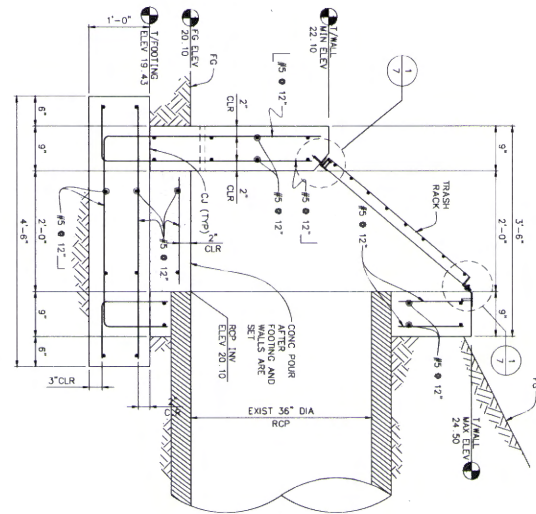
BAYVIEW HEIGHTS DRAINAGE RESTORATION PROJECT	
DETENTION BASIN CROSS SECTIONS	
CITY OF NEWPORT BEACH PUBLIC WORKS DEPARTMENT	X-XXXX-X SHEET 6 OF 11



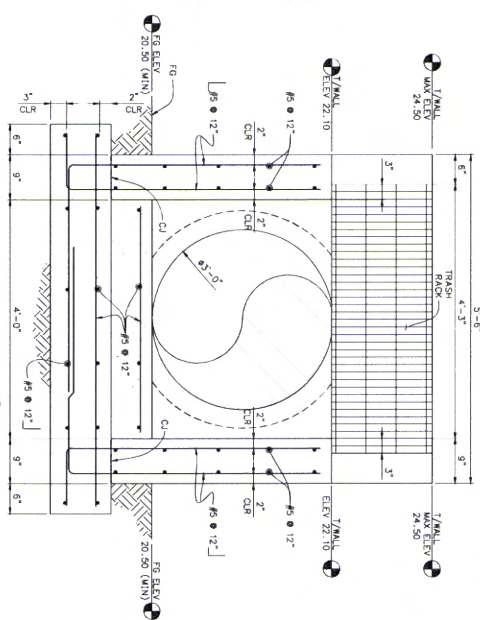
NOTE:
1. REMOVABLE TRASH RACK ASSEMBLY SHALL BE STAINLESS STEEL METAL GRATING.
2. SEE ALSO MISCELLANEOUS METAL NOTES ON THIS SHEET.
3. DENOTES METAL GRATING SPAN ORIENTATION.

10 OUTLET STRUCTURE DETAIL

SECTION
SCALE: 3/8" = 1'-0"
7



SECTION
SCALE: 3/8" = 1'-0"
B



PLAN PROVIDED BY:
Michael Baker International
10000 Wilshire Blvd, Suite 500
Beverly Hills, CA 90212
Phone: (310) 872-2900
www.mbakercorp.com

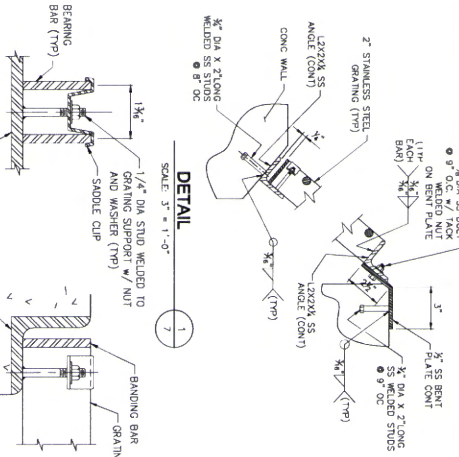
REVISION BY:	DATE:	BY:	DATE:	BY:	DATE:	BY:	DATE:	BY:	DATE:
DESIGNER	CS	DATE	CS	DATE	CS	DATE	CS	DATE	CS
DESIGNED BY	CS	DATE	CS	DATE	CS	DATE	CS	DATE	CS
CHECKED BY	CS	DATE	CS	DATE	CS	DATE	CS	DATE	CS
APPROVED BY	CS	DATE	CS	DATE	CS	DATE	CS	DATE	CS
CITY OF NEWPORT BEACH - PUBLIC WORKS DEPARTMENT									
SHEET 7 OF 11									

GRATING SUPPORT DETAIL

N.T.S.

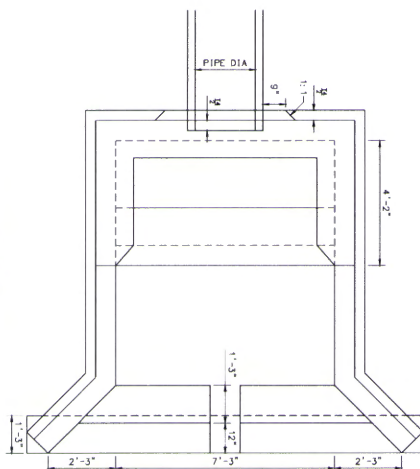
2

- NOTES:
- GRATING SHALL BE STAINLESS STEEL, 19-85-4 AS MANUFACTURED BY "GRATING FACILITY" OR APPROVED EQUAL.
 - ALL ENDS AND OPENINGS SHALL BE Banded.
 - ALL GRATING SHALL BE SECURED IN PLACE WITH REMOVABLE FASTENERS.
 - PROVIDE 4 CLIPS PER GRATING PANEL, APPROXIMATELY 4 INCHES FROM PANEL CORNERS.
 - BRACING BARS, DEPTH 2" x 3/4" x 1/4" OC, GROSS BARS 4" OC.
 - STUD, NUT, WASHER AND CLIP TO BE THE SAME MATERIAL AS THE GRATING.

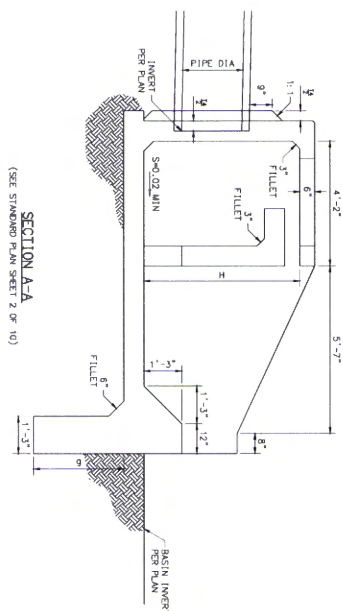


- GENERAL NOTES:
- ALL MATERIALS AND CONSTRUCTION SHALL CONFORM TO THE 2013 CALIFORNIA BUILDING CODE (CBC).
 - CONTRACTOR SHALL VERIFY ALL EXISTING SITE CONDITIONS AND CONTROLLING DIVISIONS BEFORE ORDERING OR FABRICATING ANY MATERIALS.
 - CONTRACTOR SHALL VERIFY LOCATION OF ALL SITE UTILITIES PRIOR TO STARTING ANY EXCAVATION WORK. ANY UTILITIES SHALL BE BROUGHT TO THE ATTENTION OF THE OWNER, WHICH MAY BE IMPACTED BY THE WORK. ANY CONFLICTS SHALL BE BROUGHT TO THE ATTENTION OF THE OWNER.
- DESIGN CRITERIA:
- DESIGN CODES AND REFERENCES
2013 CBC, ASCE 7-10, ACI 318-11.
 - SOIL DESIGN PARAMETERS
ALLOWABLE SOIL BEARING = 1,500 PSF FOR DEAD AND LIVE LOADS.
FRICTION COEFFICIENT = 0.35 BETWEEN CONCRETE AND SOIL.
- CONCRETE:
- ALL CONCRETE SHALL HAVE A MINIMUM ULTIMATE COMPRESSIVE STRENGTH OF 4,000 PSI (28 DAYS).
 - REINFORCING STEEL SHALL BE TYPE 60,000 PSI (ASTM A615) OR EQUIVALENT.
 - REINFORCING STEEL SHALL CONFORM TO ASTM A615 (GR. 60).
 - PIPING/CONDUITS SHALL HAVE MINIMUM CLEARANCE OF 2" FROM REINFORCING STEEL.
- MISCELLANEOUS METALS:
- METAL GRATING FOR TRASH BACK TO BE SS 304.
 - USE SS 304 FOR ALL BOLTS, NUTS AND WASHERS, UNLESS NOTED OTHERWISE.
- SPECIAL INSPECTIONS:
- SPECIAL INSPECTIONS REQUIRED FOR THIS PROJECT SHALL BE PERFORMED IN ACCORDANCE WITH CBC CHAPTER 17. SPECIAL INSPECTIONS SHALL BE PERFORMED BY A SPECIAL INSPECTOR EMPLOYED BY THE OWNER.

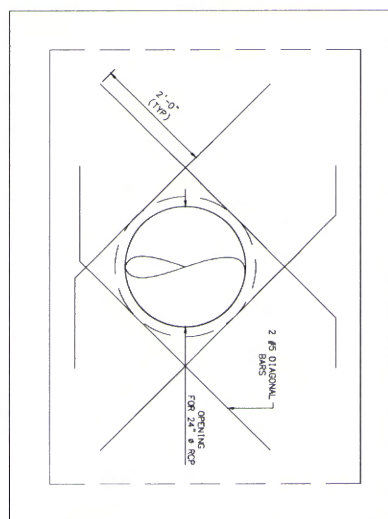
11



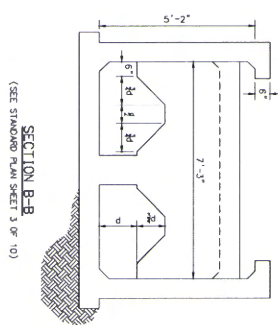
PLAN
(SEE STANDARD PLAN SHEET 1 OF 10)



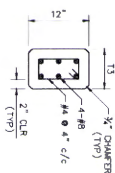
SECTION A-A
(SEE STANDARD PLAN SHEET 2 OF 10)



REINFORCING @ PIPE OPENING
SCALE: 1" = 1'-0"



SECTION B-B
(SEE STANDARD PLAN SHEET 3 OF 10)



SECTION G-G
(SEE STANDARD PLAN SHEET 2 OF 10)

[illegible]

BAR DIAMETER	DEVELOPMENT LENGTH (in)	SPLICE (in)
#4	17	24
#5	21	28
#6	25	33
#7	33	43
#8	44	58

BAR SPLICE TABLE

1. IMPACT STRUCTURE SHALL CONFORM TO SPERC STANDARD PLAN 394-2 SHEETS 1 THROUGH 10, WITH MODIFICATIONS FOR DIMENSIONS AND BAR DESIGNATION AS SHOWN HEREIN.
2. MINIMUM ULTIMATE COMPRESSIVE STRENGTH OF CONCRETE f_c SHALL BE 3600 PSI.
3. REINFORCING STEEL SHALL CONFORM TO ASTM A615, GR 60.

C-XXXX



Michael Baker
INTERNATIONAL

5 Multion Creative Drive, Suite 500
Santa Ana CA 92707
Phone (949) 472-3505
MBAKERINTL.COM

REVIEWED BY:

DATE: _____

247

३	
---	--

1

1000 OF 1000

[illegible]

3	
9	

0300

DATE	
------	--

Pa

22

OF THE

WVF-01

165

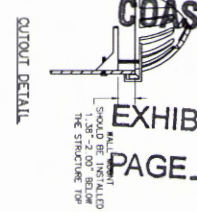
5

8 135

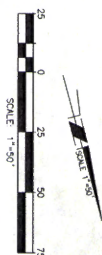
$$\frac{1}{\sqrt{1-\beta^2}}$$

update

1

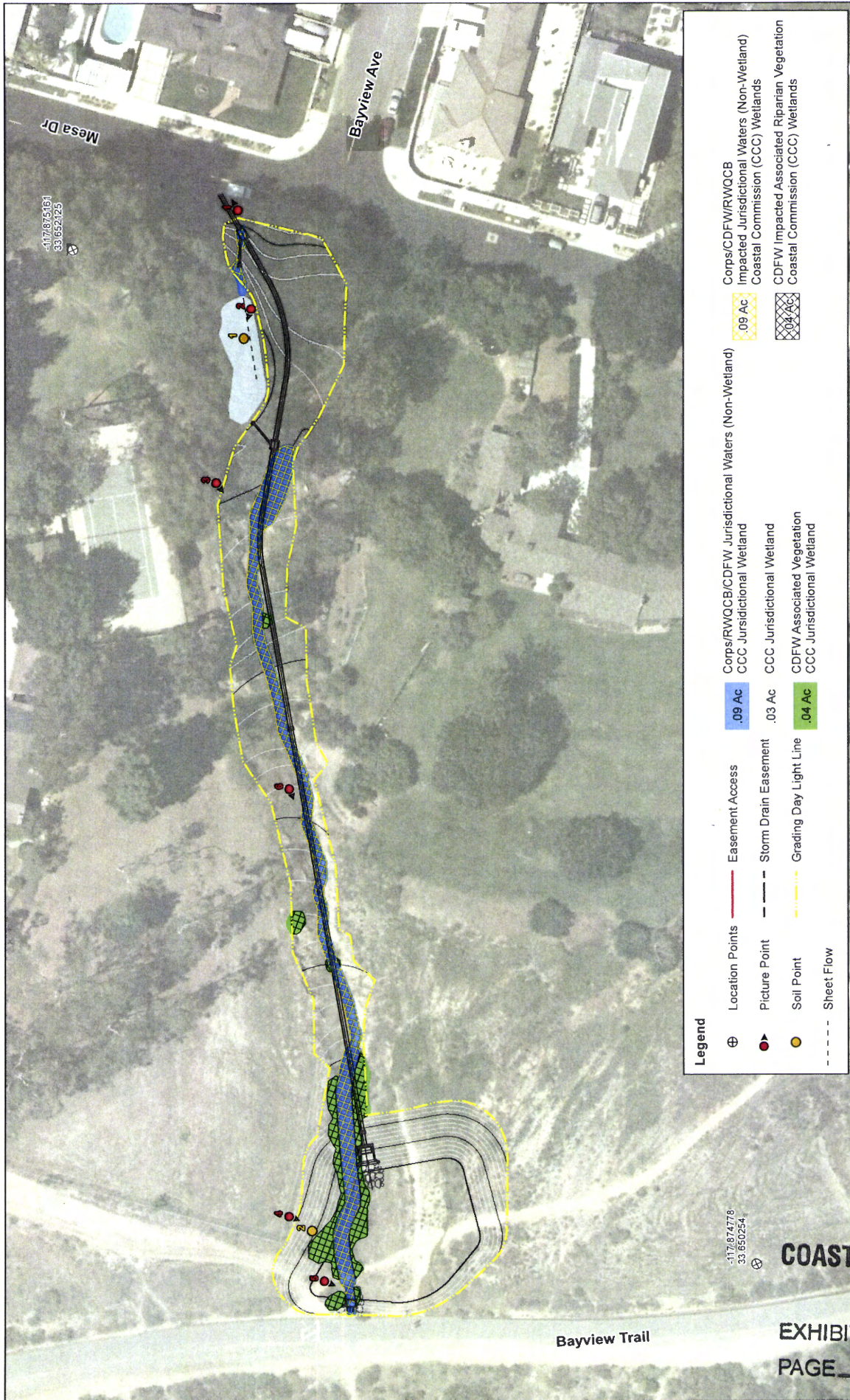
1/4 1011 ROCK GRADUATION TABLE

14725 Alton Parkway
Irvine, CA 92618
Phone: (949) 472-3505
MBAKERINTL.COM



COASTAL COMMISSION

EXHIBIT # 2
PAGE 8 OF 8



- Legend**
- Location Points
 - Picture Point
 - Soil Point
 - Sheet Flow
 - Easement/Access
 - Storm Drain Easement
 - Grading Day Light Line
 - Corps/RWQCB/CCF Jurisdictional Waters (Non-Wetland)
 - CCC Jurisdictional Wetland
 - CCC Jurisdictional Wetland
 - CCF Associated Vegetation
 - CCC Jurisdictional Wetland
 - Corps/CDFW/RWQCB Impacted Jurisdictional Waters (Non-Wetland)
 - Coastal Commission (CCC) Wetlands
 - CDFW Impacted Associated Riparian Vegetation
 - Coastal Commission (CCC) Wetlands

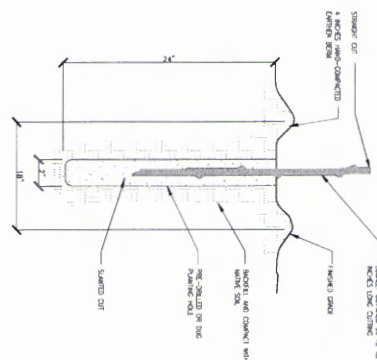


COASTAL COMMISSION

EXHIBIT # **3**
 PAGE **1** OF **1**

Mikhael E. Baker
 1/1/2014

NTS

[illegible]

**BAYVIEW HEIGHTS DRAINAGE
RESTORATION PROJECT**

PLANTING DETAILS

CITY OF NEWPORT BEACH
PUBLIC WORKS DEPARTMENT

X-XXXX-X
SHEET 11 OF 11

H:\pdate\145986\CADD\Arch\Div\145986 - Bayview_011.dwg 06/06/17 - 11:10am CATHYJ

PAGE 2 OF 2