

CALIFORNIA COASTAL COMMISSION

45 FREMONT STREET, SUITE 2000
SAN FRANCISCO, CA 94105-2219
VOICE (415) 904-5200
FAX (415) 904-5400
TDD (415) 597-5885



Th5b

5-17-0337 (SEGERSTROM PROPERTIES)

JUNE 22, 2017

EXHIBITS

Table of Contents

Exhibit 1 – Site Plan

Exhibit 2 – Site Location

Exhibit 1



Swift Slip Dock & Pier Builders, Inc

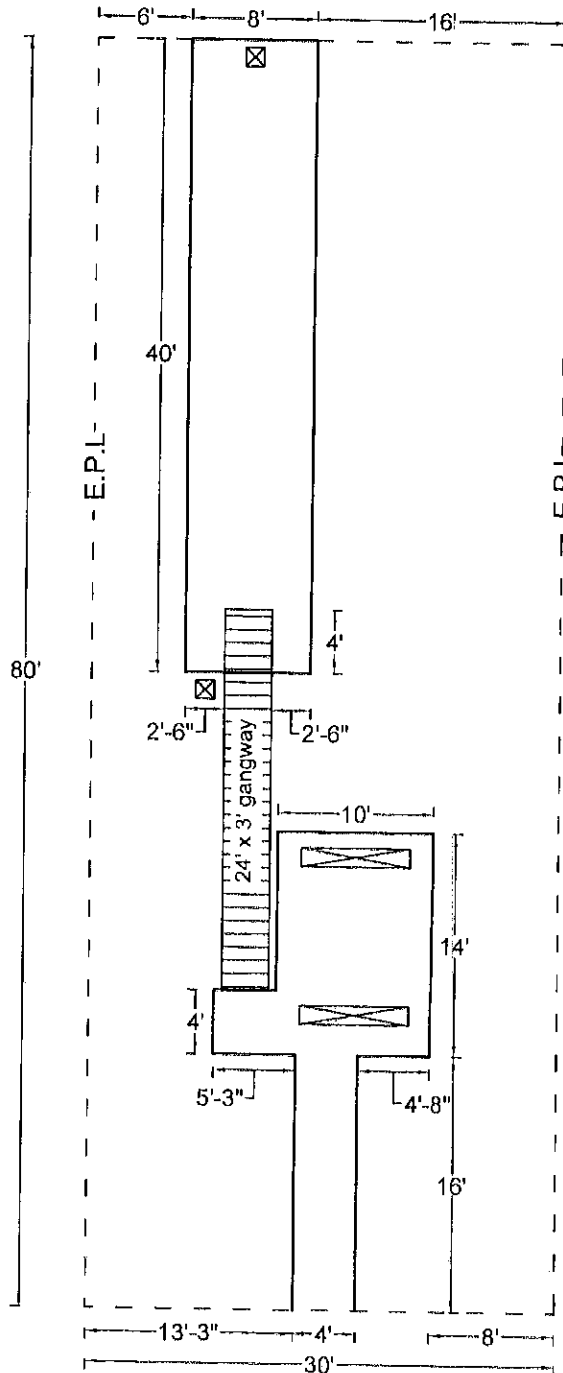
642 Baker St, Costa Mesa, CA, 92626

Phone: (949) 631-3121

Fax: (714) 509-0618

CLIENT: Segerstrom	EN DRAWN.	PS CHECKED.	REVISION.	4/17/17 DATE.	AMENDMENTS:			
SITE: 820 W Bay Ave. Newport Beach, CA					REV:	DESCRIPTION:	BY:	DATE:

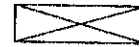
Proposed



typical 14" square pile



typical 7' x 14" T-pile



Floating Dock: 320 sq ft

40' x 8': 320

Pier: 220 sq ft

10' x 14': 140

4' x 4': 16

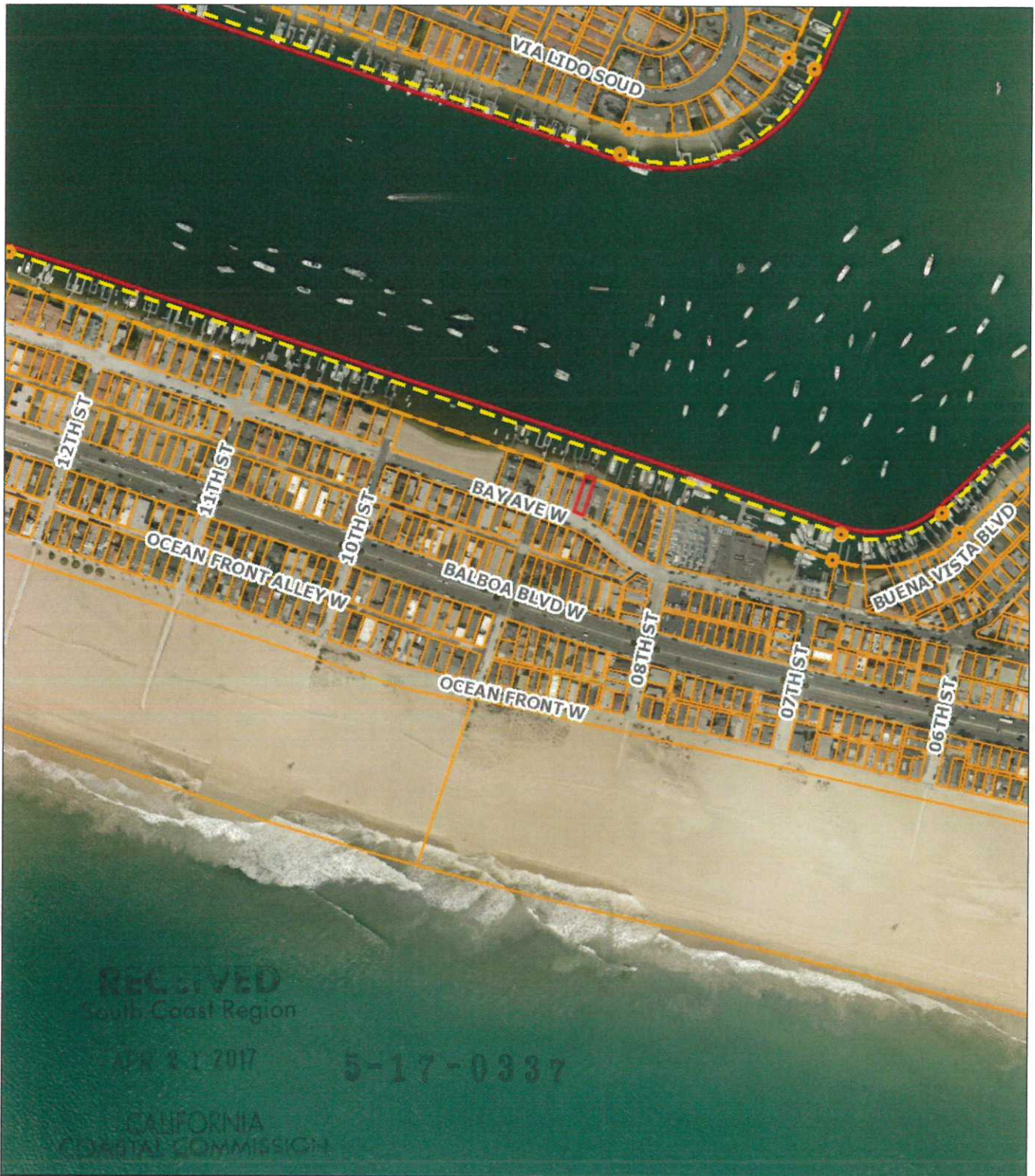
16' x 4': 64

Gangway: 72 sq ft

Total Area: 612 sq ft

The information contained in this drawing is confidential and proprietary to Swift Slip Dock & Pier Builders, Inc. No part of this drawing may be distributed, disclosed or reproduced in any form to any third party without consent from Swift Slip Dock & Pier Builders, Inc.

Exhibit 2



Newport
Beach
GIS



Disclaimer: Every reasonable effort has been made to assure the accuracy of the data provided, however, The City of Newport Beach and its employees and agents disclaim any and all responsibility from or relating to any results obtained in its use.

Imagery: 2009-2013 photos provided by Eagle Imaging www.eagleaerial.com