

CALIFORNIA COASTAL COMMISSION

South Coast Area Office
200 Oceangate, Suite 1000
Long Beach, CA 90802-4302
(562) 590-5071



Th5d

5-17-0421(BAKER)

JULY 13, 2017

EXHIBITS

Table of Contents

Exhibit 1 – Vicinity Map

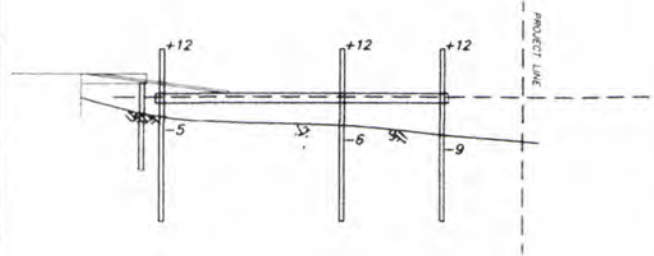
Exhibit 2 – Dock Plans



Google Earth



CITY OF NEWPORT BEACH



SCALE 1"=40'

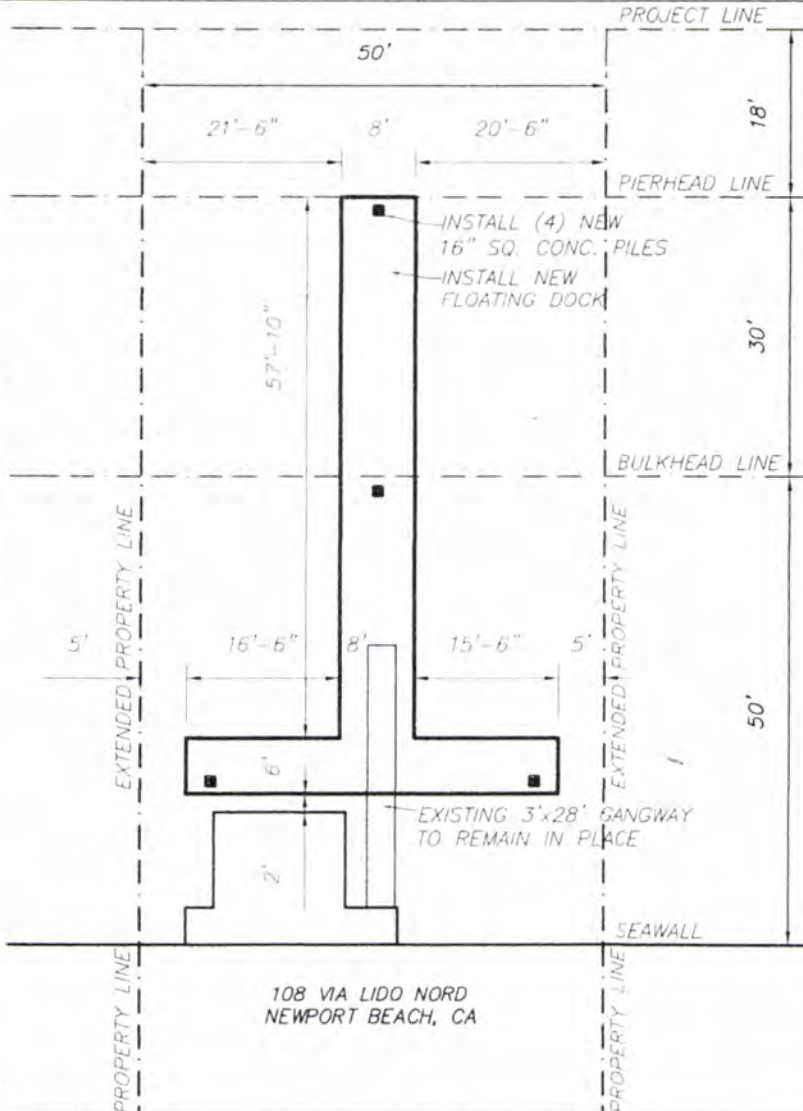
ELEVATION

SOUNDINGS ARE EXPRESSED IN FEET AND DENOTE DEPTHS BELOW MEAN LOWER LOW WATER. MAXIMUM RANGE OF TIDE APPROXIMATELY 10 FEET. HARBOR LINES ARE ESTABLISHED IN THIS SECTION OF NEWPORT BAY.

- EEL GRASS INSPECTION**
- Eelgrass within 15' of project
 - Eelgrass within 15 - 30' of project
 - No Eelgrass in project area

Signature

10/31/16 1545
Inspection Date & Time



HARBOR RESOURCES DIVISION
CITY OF NEWPORT BEACH

Shawley 3/30/17



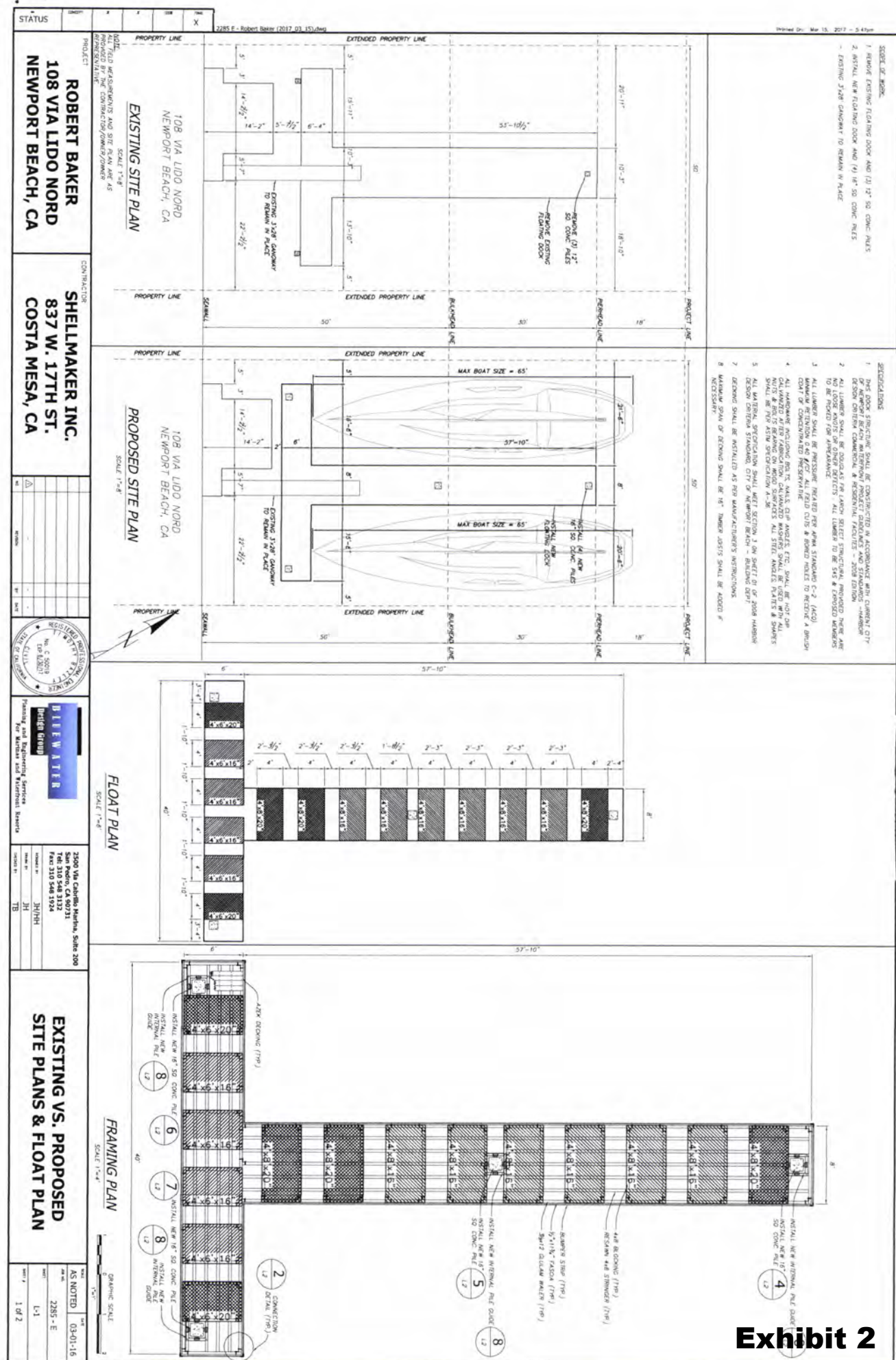
Planning and Engineering Services
For Marinas and Waterfront Resorts

SITE PLAN
SCALE 1"=20'

APPLICANT'S NAME: ROBERT BAKER

JOB ADDRESS: 108 VIA LIDO NORD

DATE: 15 MAR. 17



PROJECT: ROBERT BAKER
108 VIA LIDO NORD
NEWPORT BEACH, CA

CONTRACTOR: SHELLMAKER INC.
837 W. 17TH ST.
COSTA MESA, CA

SCALE: 1"=8'

1285 E - Robert Baker (2017.03.15).dwg

Project ID: 2017-03-15-03

PROJECT: ROBERT BAKER
108 VIA LIDO NORD
NEWPORT BEACH, CA

CONTRACTOR: SHELLMAKER INC.
837 W. 17TH ST.
COSTA MESA, CA

SCALE: 1"=8'

1285 E - Robert Baker (2017.03.15).dwg

PROJECT: ROBERT BAKER
108 VIA LIDO NORD
NEWPORT BEACH, CA

CONTRACTOR: SHELLMAKER INC.
837 W. 17TH ST.
COSTA MESA, CA

SCALE: 1"=8'

1285 E - Robert Baker (2017.03.15).dwg

PROJECT: ROBERT BAKER
108 VIA LIDO NORD
NEWPORT BEACH, CA

CONTRACTOR: SHELLMAKER INC.
837 W. 17TH ST.
COSTA MESA, CA

SCALE: 1"=8'

1285 E - Robert Baker (2017.03.15).dwg

AS NOTED 03-01-16

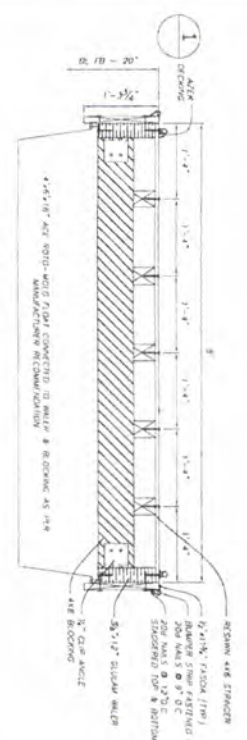
DATE: 2/25/16

SCALE: 1"=8'

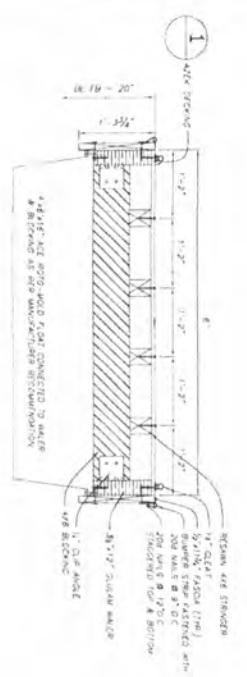
DRAWING SCALE: 1"=8'

NO. 1 OF 2

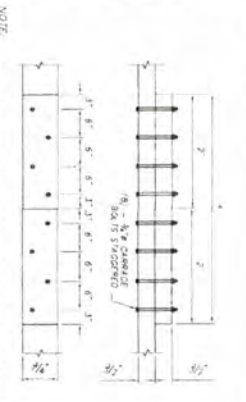
STATUS



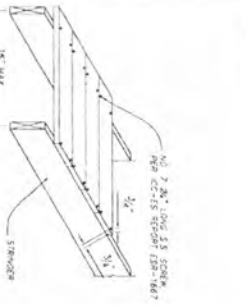
SECTION A
SCALE 1/4" = 1'-0"



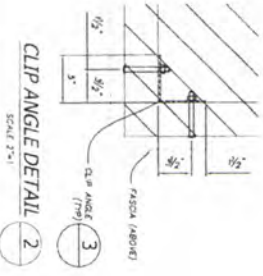
SECTION B
SCALE 1/4" = 1'-0"



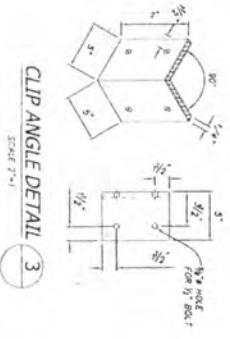
TYPICAL SPUR JOINT
SCALE 3/4" = 1'-0"



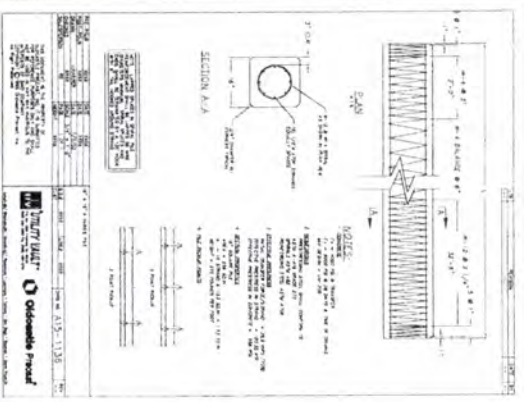
AZEK DECKING DETAIL
SCALE 1/4" = 1'-0"



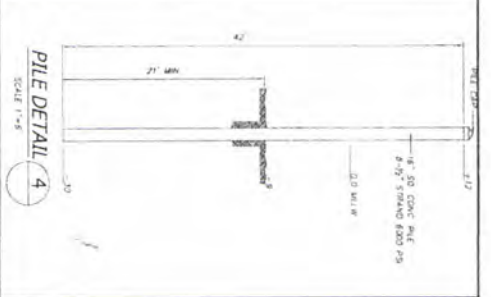
CLIP ANGLE DETAIL 2
SCALE 3/4" = 1'-0"



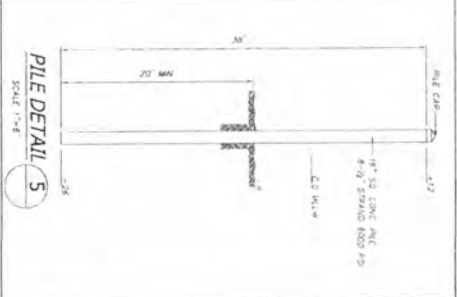
CLIP ANGLE DETAIL 3
SCALE 3/4" = 1'-0"



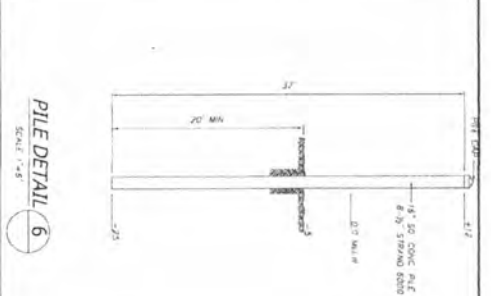
SECTION A/A
SCALE 1/4" = 1'-0"



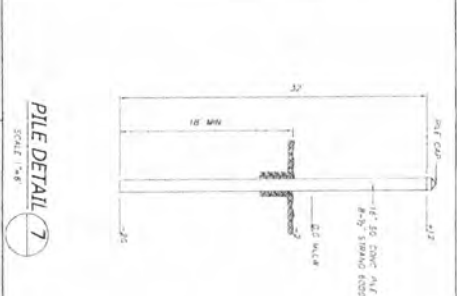
PILE DETAIL 4
SCALE 1/4" = 1'-0"



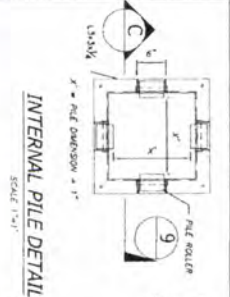
PILE DETAIL 5
SCALE 1/4" = 1'-0"



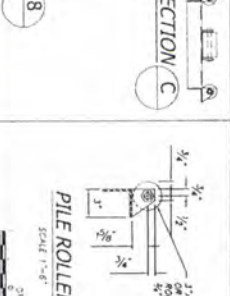
PILE DETAIL 6
SCALE 1/4" = 1'-0"



PILE DETAIL 7
SCALE 1/4" = 1'-0"



INTERNAL PILE DETAIL 8
SCALE 1/4" = 1'-0"



PILE ROLLER 9
SCALE 1/4" = 1'-0"

PROJECT
ROBERT BAKER
108 VIA LIDO NORD
NEWPORT BEACH, CA

CONTRACTOR
SHELLMAKER INC.
837 W. 17TH ST.
COSTA MESA, CA

NO.	DATE	DESCRIPTION



DREW
DESIGN GROUP
2500 VIA CALIFORNIA MARTINE, SUITE 200
SAN JOSE, CA 95131
TEL: 415 554 1924
FAX: 415 554 1924

2500 VIA CALIFORNIA MARTINE, SUITE 200
SAN JOSE, CA 95131
TEL: 415 554 1924
FAX: 415 554 1924

FRAMING DETAILS & PILE DETAILS

AS NOTED 03-01-16
2085-E
L-2
2 of 2