

**CALIFORNIA COASTAL COMMISSION**

45 FREMONT, SUITE 2000  
SAN FRANCISCO, CA 94105-2219  
VOICE (415) 904-5200  
FAX (415) 904-5400  
TDD (415) 597-5885

**W6a**

August 7, 2017

**TO:** California Coastal Commission and Interested Parties

**FROM:** John Ainsworth, Executive Director

**SUBJECT:** Executive Director's Report, August 2017

---

Significant reporting items for the month. [Strategic Plan](#) (SP) reference provided where applicable:

**LCP Program Status – Los Angeles County (SP Goal 4)**

Los Angeles (LA) County includes 135 miles of mainland shoreline (including the ports) as well as Santa Catalina Island (65 shoreline miles) and San Clemente Island (57 shoreline miles). The coastal zone area totals approximately 276 square miles of the County's 4,751 square miles of total land area and includes portions of the County of Los Angeles and 12 incorporated cities. These cities are: Malibu, Los Angeles, Santa Monica, El Segundo, Manhattan Beach, Hermosa Beach, Redondo Beach, Torrance, Palos Verdes Estates, Rancho Palos Verdes, Long Beach and Avalon, on Santa Catalina Island 22 miles off the coast. The coastal zone in LA County also includes the Port of Los Angeles and Port of Long Beach.

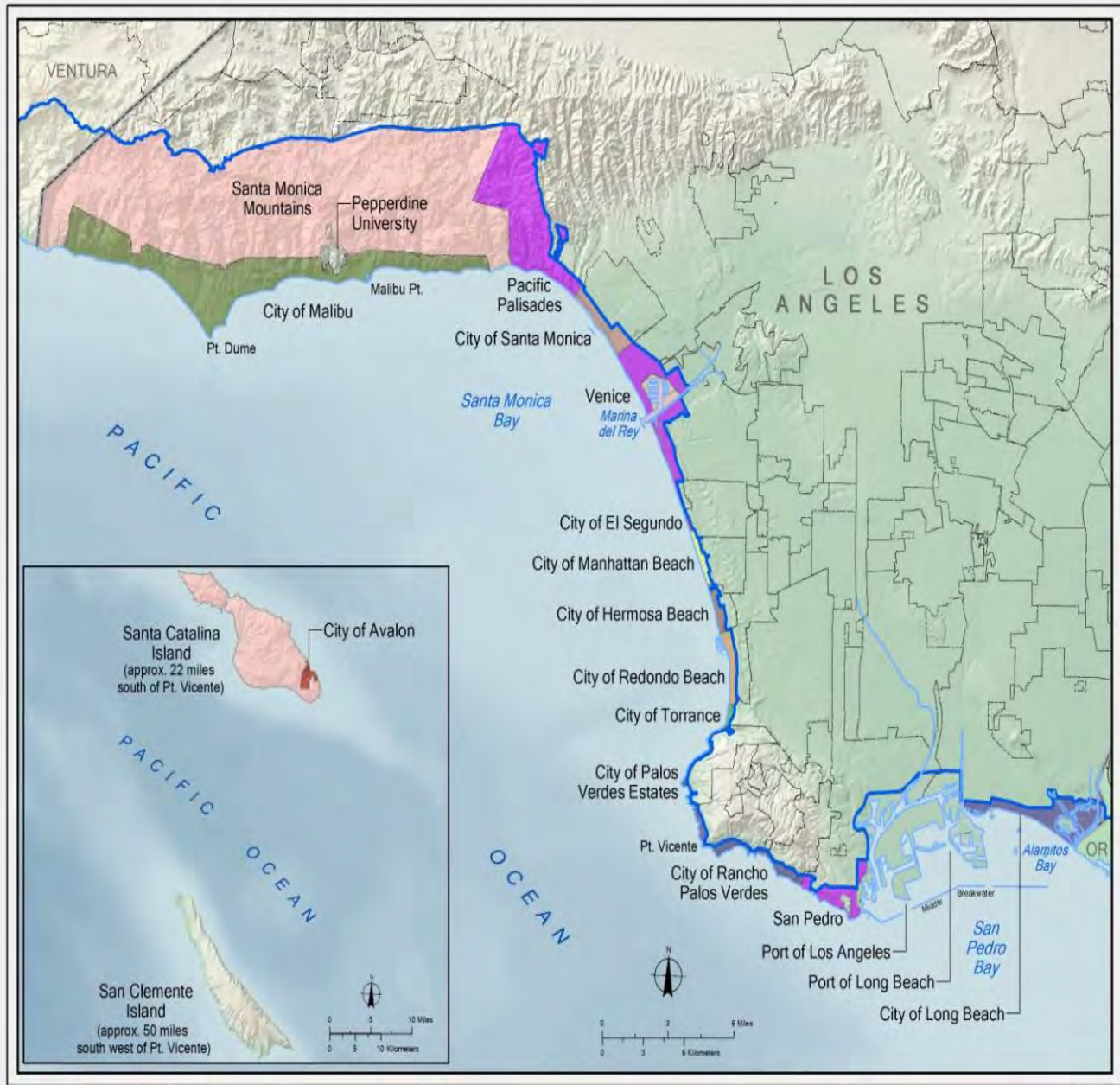
The County includes the resources of the Santa Monica Mountains in the northwest, a series of broad sandy beaches in several beach cities extending around Santa Monica Bay, the hills, rocky beaches and coves of the Palos Verdes Peninsula to industrial harbor complexes at San Pedro Bay and sandy beaches from Long Beach to Alamitos Bay. There are also thousands of recreational and commercial boating slips at facilities throughout the county. Over 10 million residents (around 26% of the state) reside in the County and cities in Los Angeles, and the area is among the most diverse in the state. The coastal jurisdictions support significant urban development, beaches, visitor and commercial recreation and varied natural resources.

With the certification of the Santa Monica Mountains Local Coastal Program (LCP) segment in 2014, the County of Los Angeles LCP now has 3 of 4 segments certified. The remaining uncertified segment is the Playa Vista A segment. The remaining Playa Vista A segment consists of lands that were transferred to the State in 2003 to be managed by the Wildlife Conservation Board. Management and/or restoration plans have not been developed and thus no LCP is currently being developed.

The City of Los Angeles has six segments, all of which are uncertified. The Commission awarded LCP grants in FY 13 and FY 14 to the City of LA to work toward certification of the Venice LCP segment. The Cities of Santa Monica and Hermosa Beach are uncertified but also received LCP grants to complete their LCPs. The City of Torrance is also uncertified. LCPs were certified for the other jurisdictions in the county: the City of Malibu (2002), the City of El Segundo (1982), the City of Manhattan Beach (1995), the City of Redondo Beach (2010), the City of Palos Verdes Estates (1991), the City of Rancho Palos Verdes (1983), the City of Long Beach (1980 - one of the earliest) and the City of Avalon on Santa Catalina Island (1981). The City of Avalon has been recommended for an FY 17 LCP grant to fund the completion of a sea level rise vulnerability assessment that will support a targeted LCP amendment, and this staff recommendation will be heard by the Commission at the August 2017 meeting. Port Master Plans were certified for both the Port of Long Beach (1978) and the Port of Los Angeles (1980).

In addition to the planning underway to achieve certification of new LCPs, some work is underway in the City of Long Beach to update portions of its LCP. The City is currently working on completing the LCP for the Los Cerritos Wetlands area and updating the Southeast Area Development and Implementation Plan (SEADIP), including related parts of the LCP (see [http://www.lbds.info/seadip\\_update/](http://www.lbds.info/seadip_update/)). The Port of Los Angeles updated its Port Master Plan in February 2014, although this update primarily involved reformatting and making the document more user-friendly.

**Figure 1. Los Angeles County Coastal Zone LCP Jurisdictions**



## **Sea Level Guidance Implementation and Outreach (SP 3.1)**

Commission staff have been providing regular outreach and training sessions to support implementation of the Commission's Sea Level Rise (SLR) Guidance and in support of LCP Grant work. In June staff participated in several events:

### **Governor's Office of Planning and Research Meeting - Climate Justice in California's Climate Adaptation and Resiliency Strategies**

On July 13th, Commission staff participated in a meeting hosted by the Governor's Office of Planning and Research regarding climate justice in California's climate adaptation and resiliency strategies. The meeting included a presentation from the Climate Justice Working Group, which was convened by the Resources Legacy Fund, the CA Natural Resources Agency, and the Office of Planning and Research to develop a set of goals and recommendations for incorporating climate justice into the state's overarching climate adaptation strategy, Safeguarding California. The meeting also included a presentation from Dr. Rachel Morello Frosch on a report called "The Climate Gap", which details the work that community-based organizations are doing to address climate change in their own neighborhoods and regions.

### **UC Irvine Conference - Advancing Coastal Resiliency in California and Beyond.**

On July 20th, Coastal Commission staff participated in a conference at UC Irvine entitled "Advancing Coastal Resiliency in California and Beyond." The event was hosted by the university in conjunction with Blue Earth Consultants. Commission staff member Carey Batha spoke on a panel with representatives from NOAA and USC Sea Grant, focusing on the various ways that state-federal partnerships contribute to and advance sea level rise planning throughout the state. Other panels focused on environmental justice, messaging & communications, funding and innovative partnerships.

### **Adaptation Planning for Coastal Communities Training – San Luis Obispo County**

On July 27th and 28th, Coastal Commission staff from the Sea Level Rise Team and the Central Coast District Office participated in an Adaptation Planning for Coastal Communities training hosted by San Luis Obispo County and led by the NOAA Office for Coastal Management. During the training, staff from the County's planning, public works, emergency services, and energy departments, and others were led through the steps of an adaptation planning process, including identification of climate impacts, assessing vulnerabilities, identifying and prioritizing adaptation actions, and implementing strategies. Commission staff spoke on a panel with a representative from the Governor's Office of Planning and Research, focusing on integrating state policy and guidance at the local level.