

## CALIFORNIA COASTAL COMMISSION

SOUTH CENTRAL COAST DISTRICT OFFICE  
89 SOUTH CALIFORNIA STREET, SUITE 200  
VENTURA, CA 93001  
PHONE: (805) 585-1800  
WEB: WWW.COASTAL.CA.GOV



# Th22a

**4-17-0668**

**(OXNARD HARBOR DISTRICT, PORT OF HUENEME)**

**MAY 10, 2018**

### EXHIBITS

#### Table of Contents

<a href="#"><u>Exhibit 1</u></a>	<a href="#"><u>Location Map</u></a>
<a href="#"><u>Exhibit 2</u></a>	<a href="#"><u>Aerial View of Project Area</u></a>
<a href="#"><u>Exhibit 3</u></a>	<a href="#"><u>Hueneme Beach and Nearshore Placement Site</u></a>
<a href="#"><u>Exhibit 4</u></a>	<a href="#"><u>Construction Access and Staging Areas</u></a>

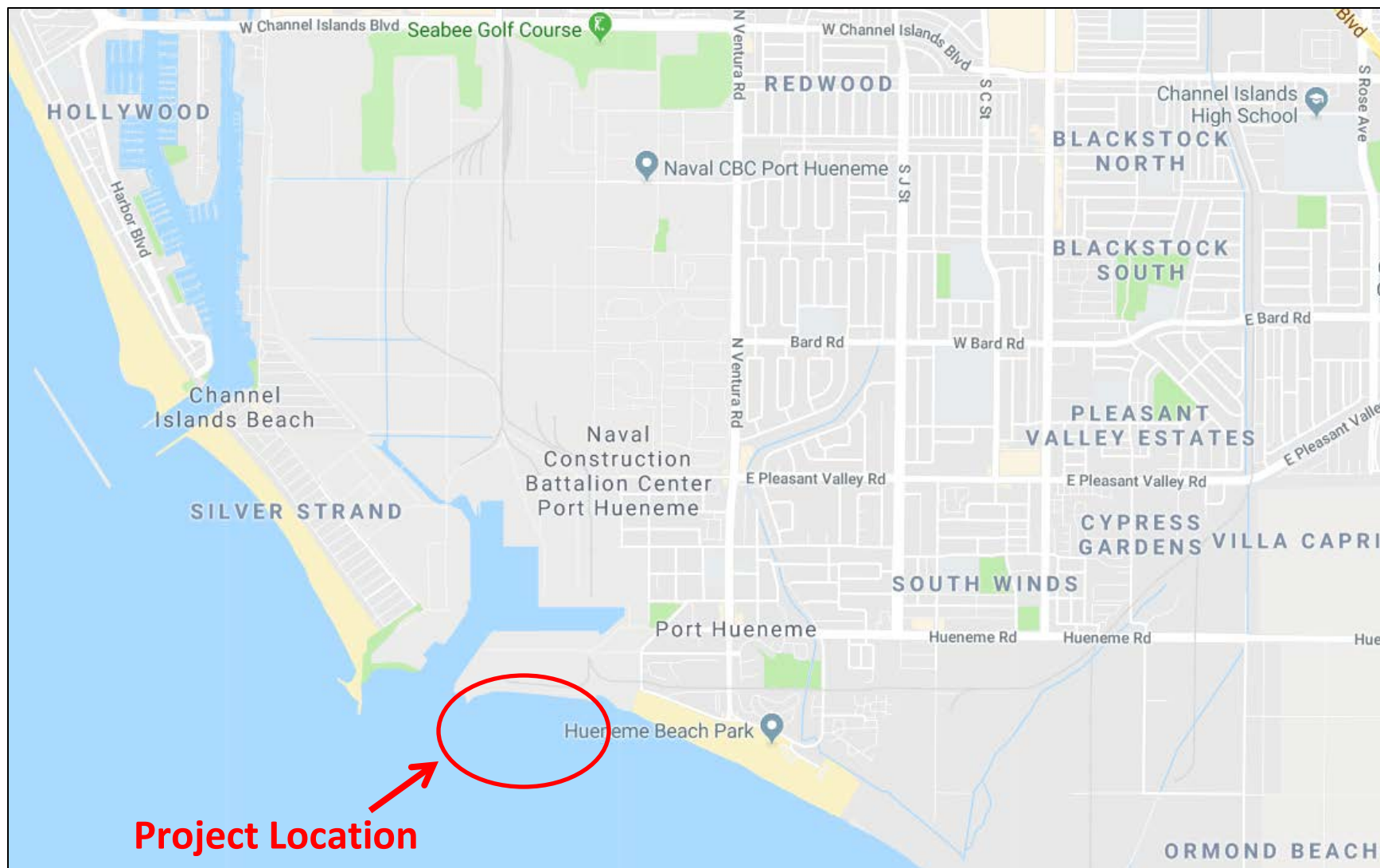
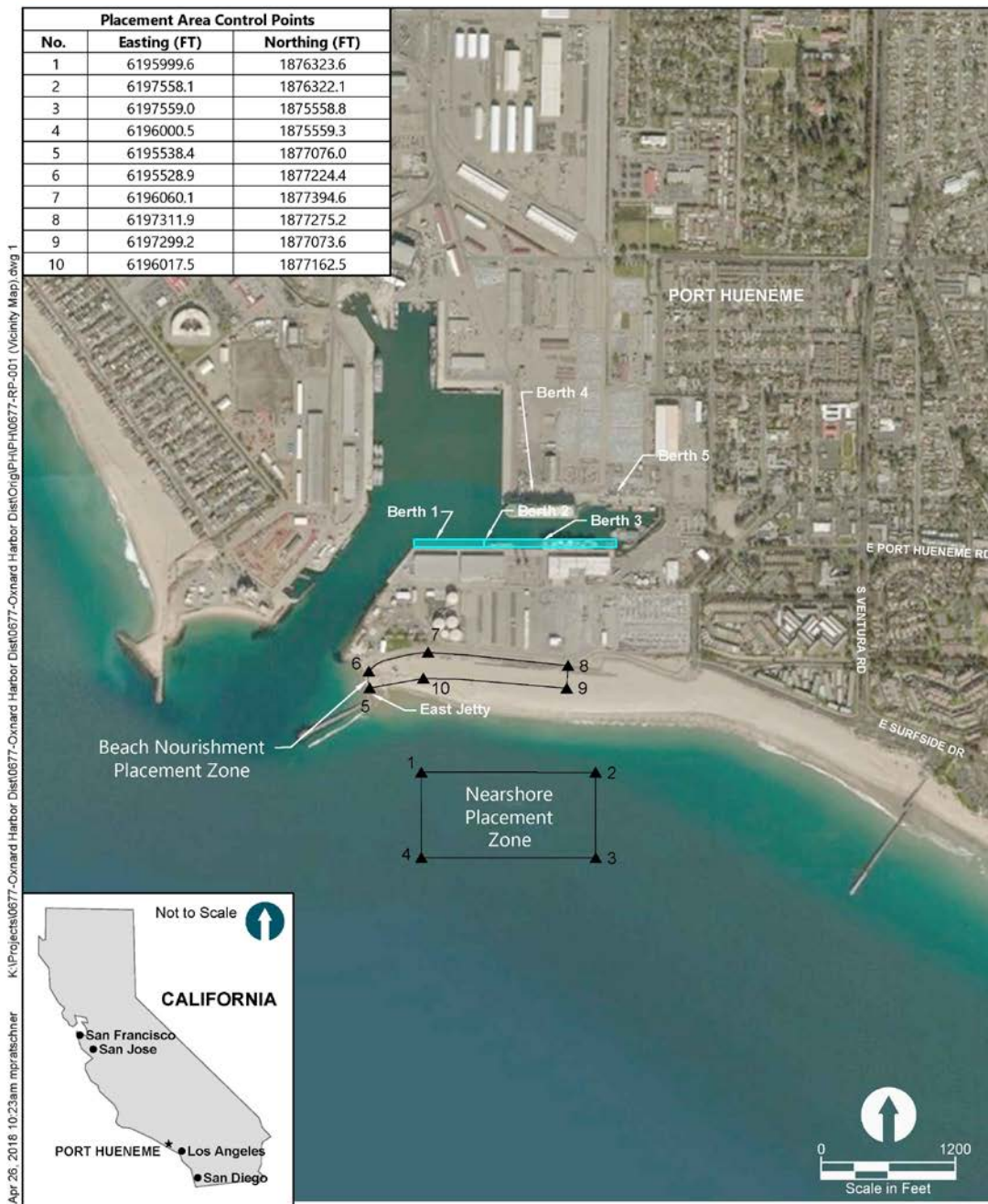


Exhibit 1  
Location Map  
4-17-0668



**Figure 1**  
Vicinity Map  
Port of Hueneme Deepening



Exhibit 2  
Aerial View of Project Area  
4-17-0668



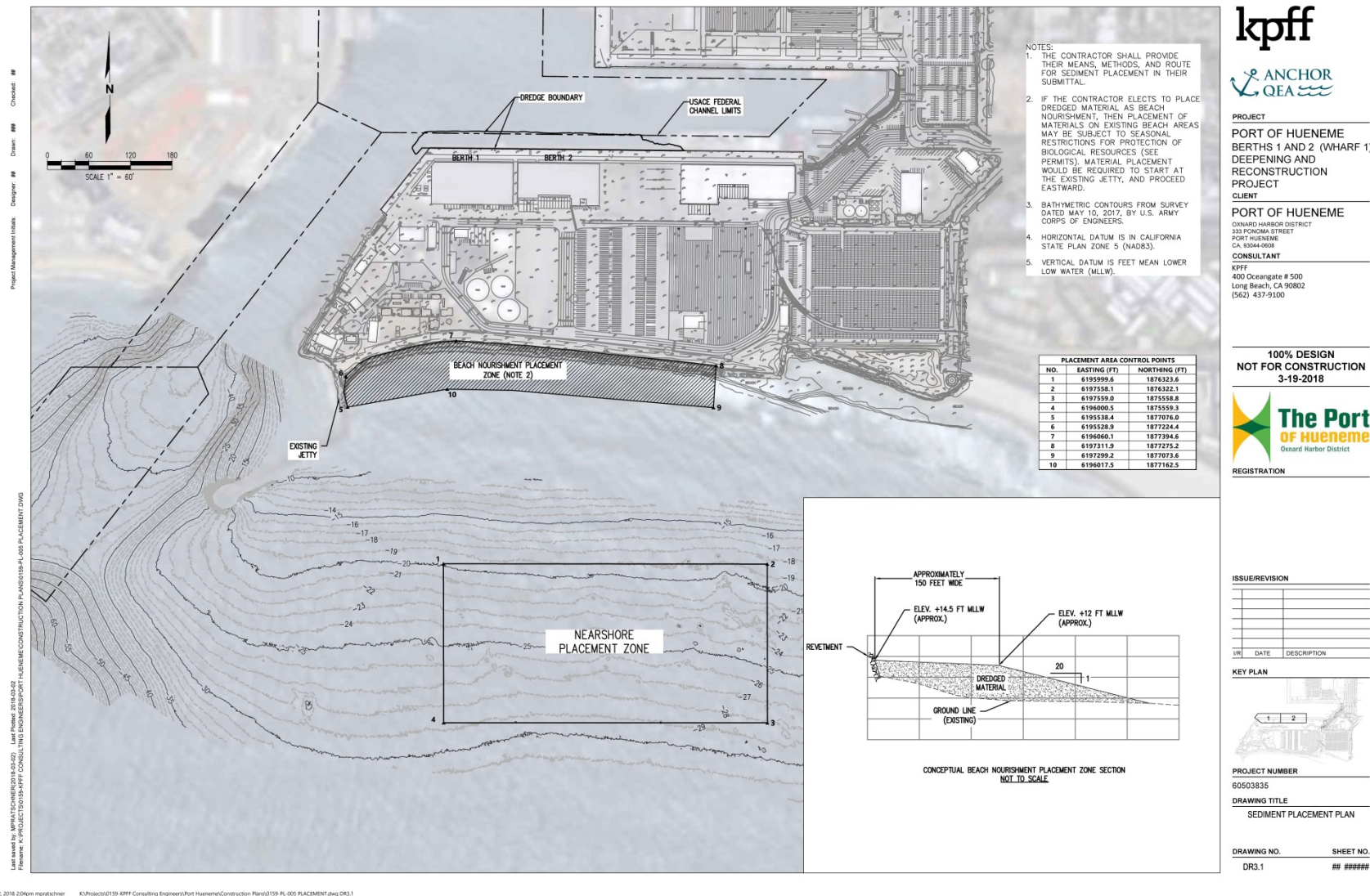
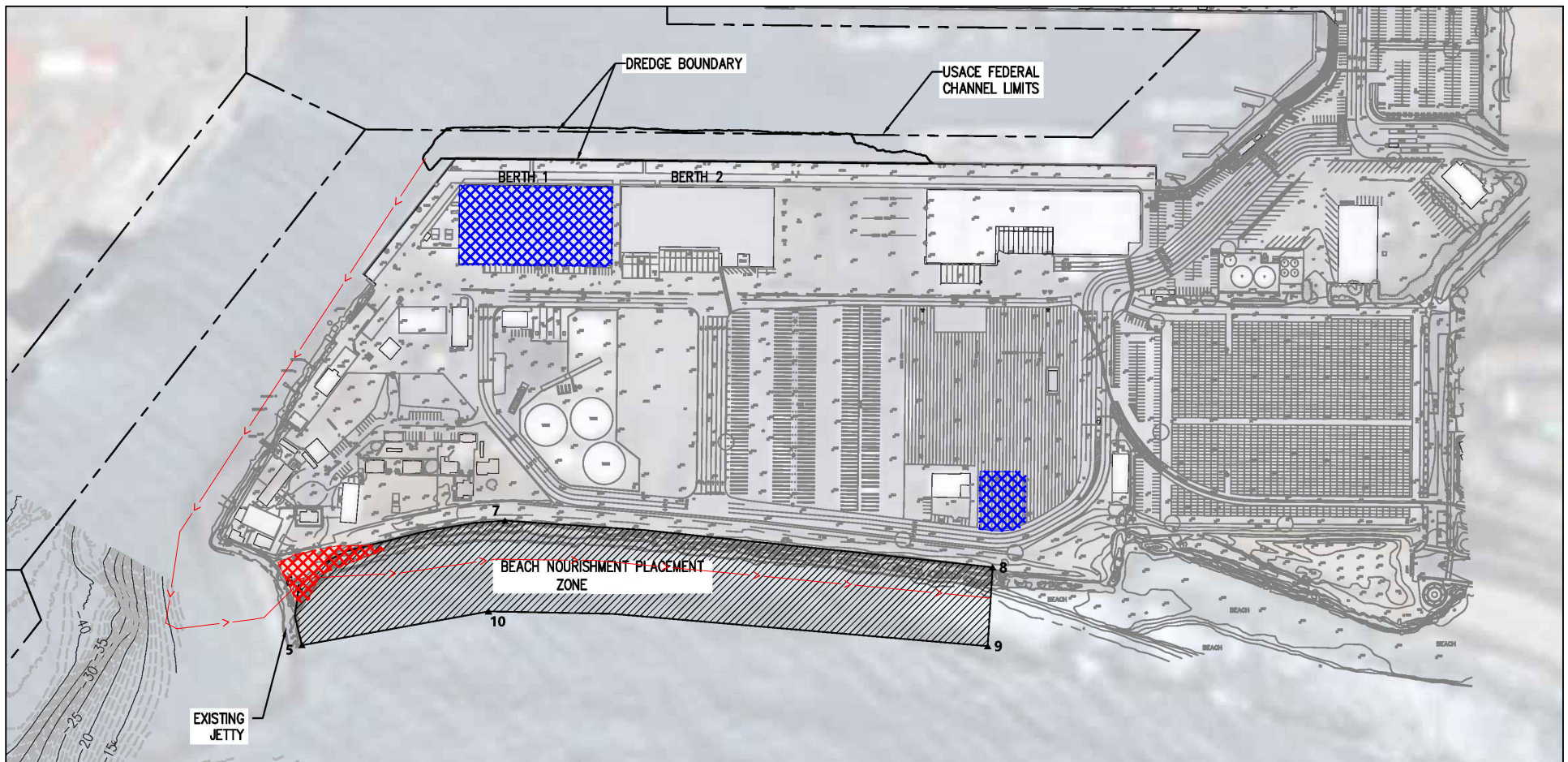





Exhibit 3  
Hueneme Beach and Nearshore Placement Site  
4-17-0668



**SOURCE:** Bathymetric contours from survey dated May 10, 2017 by U.S. Army Corps of Engineers.  
**HORIZONTAL DATUM:** California State Plane, Zone 5, NAD83, U.S. Feet.  
**VERTICAL DATUM:** Mean Lower Low Water (MLLW).

**LEGEND:**

-  Contractor Laydown Areas
-  Pipeline Work Area (Conceptual)
-  Pipeline Route (Conceptual)

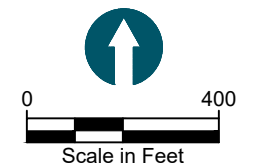


Exhibit 4  
 4-17-0668  
 Construction Access and Staging Areas