

# CALIFORNIA COASTAL COMMISSION

45 FREMONT, SUITE 2000  
SAN FRANCISCO, CA 94105-2219  
VOICE AND TDD (415) 904-5200  
FAX (415) 904-5400



# F13a

**9-19-0386**

**(MORRO BAY OYSTER COMPANY, LLC)**

**DECEMBER 13, 2019**

## **EXHIBITS**

### **Table of Contents**

**Exhibit 1** – Project Area

**Exhibit 2** - Existing and Proposed Cultivation Beds

**Exhibit 3** - Configuration of Existing and Proposed Elevated Longline Cultivation Beds

**Exhibit 4** – California Department of Public Health Map of Approved Shellfish  
Cultivation Areas

**Exhibit 5** - Schematic Diagram of Work Platform

**Exhibit 1 – Project Area (page 1 of 3)**





**Exhibit 1 – Project Area (page 2 of 3)**

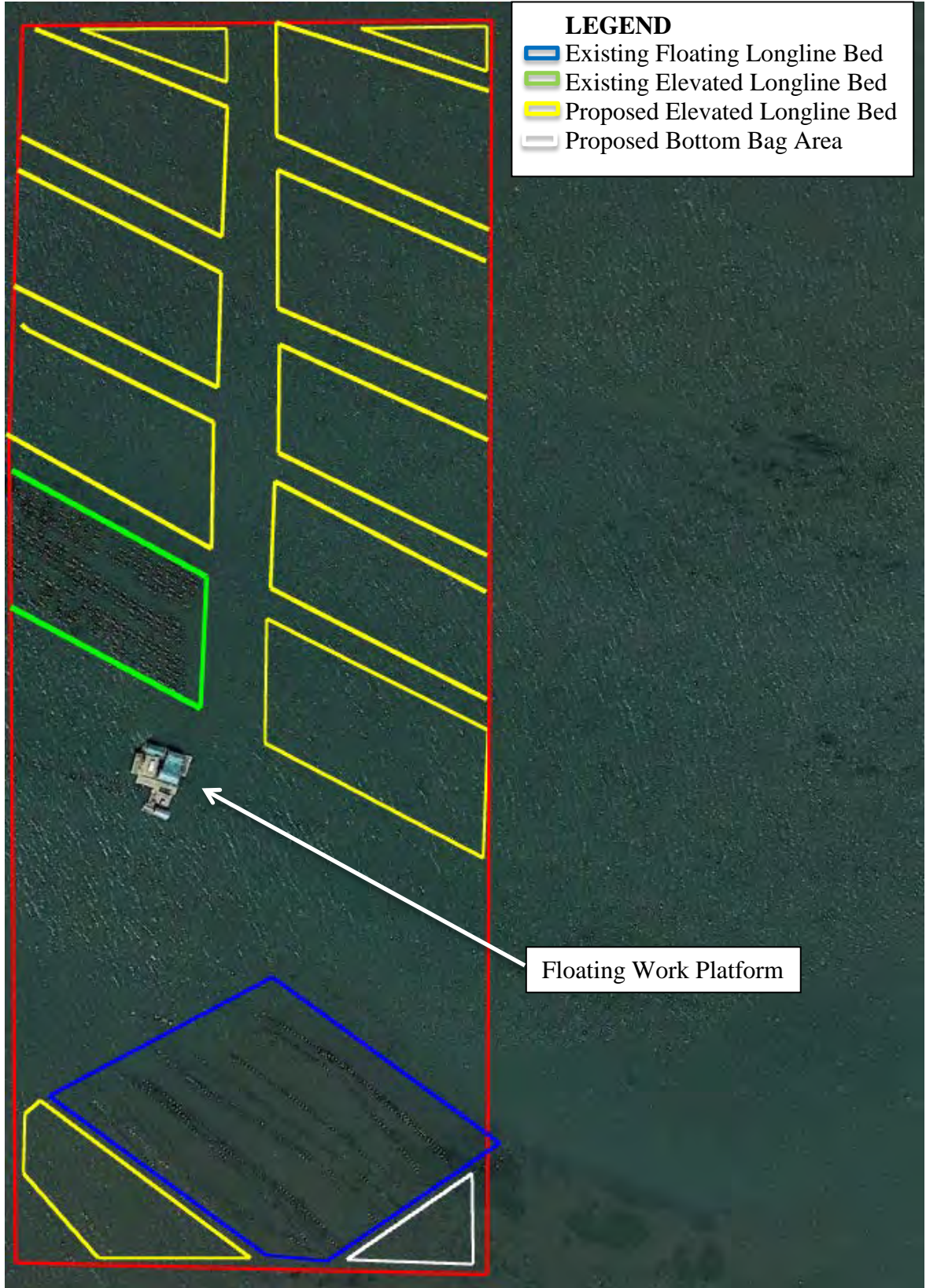


**Exhibit 1 – Project Area (page 3 of 3)**



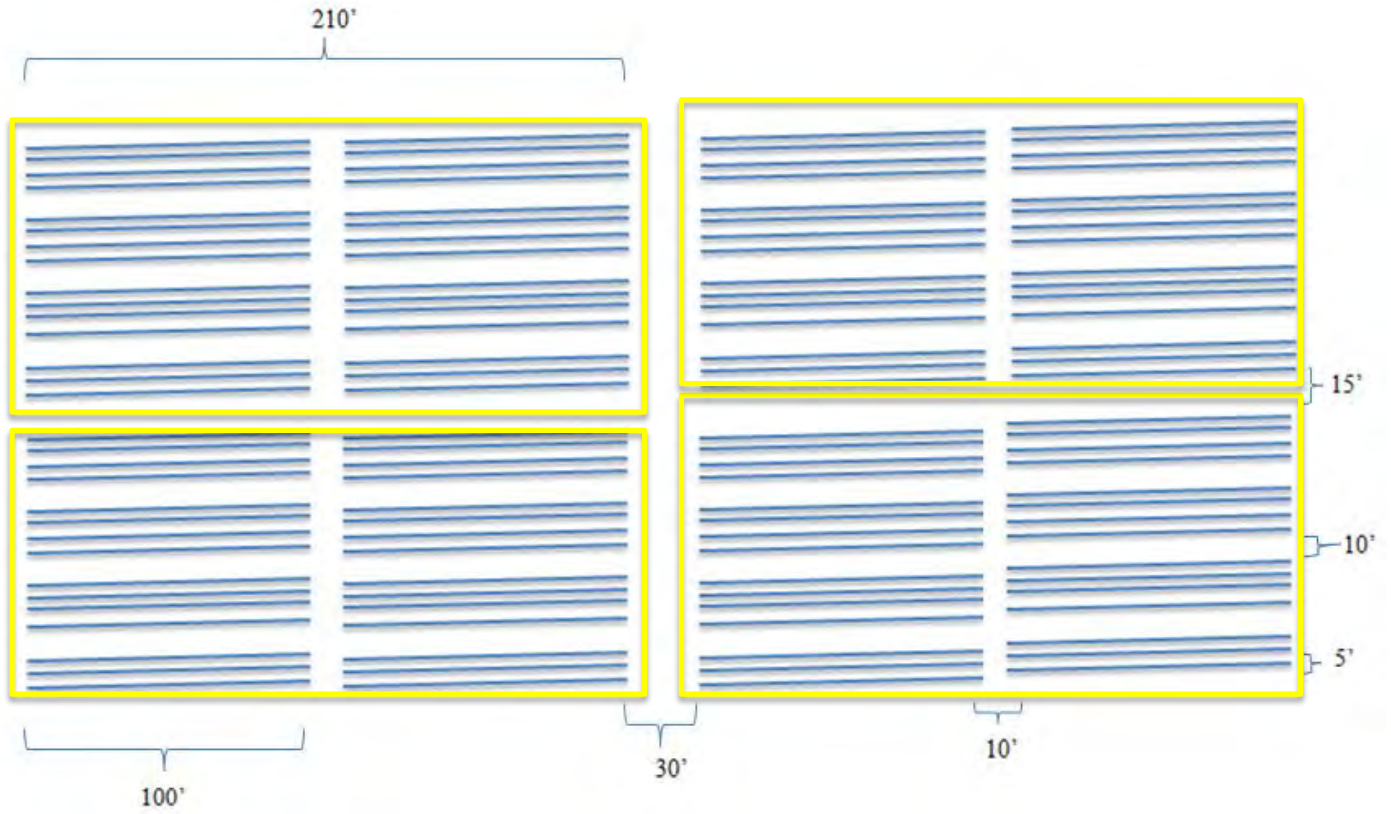


**Exhibit 2 – Existing and Proposed Cultivation Beds**



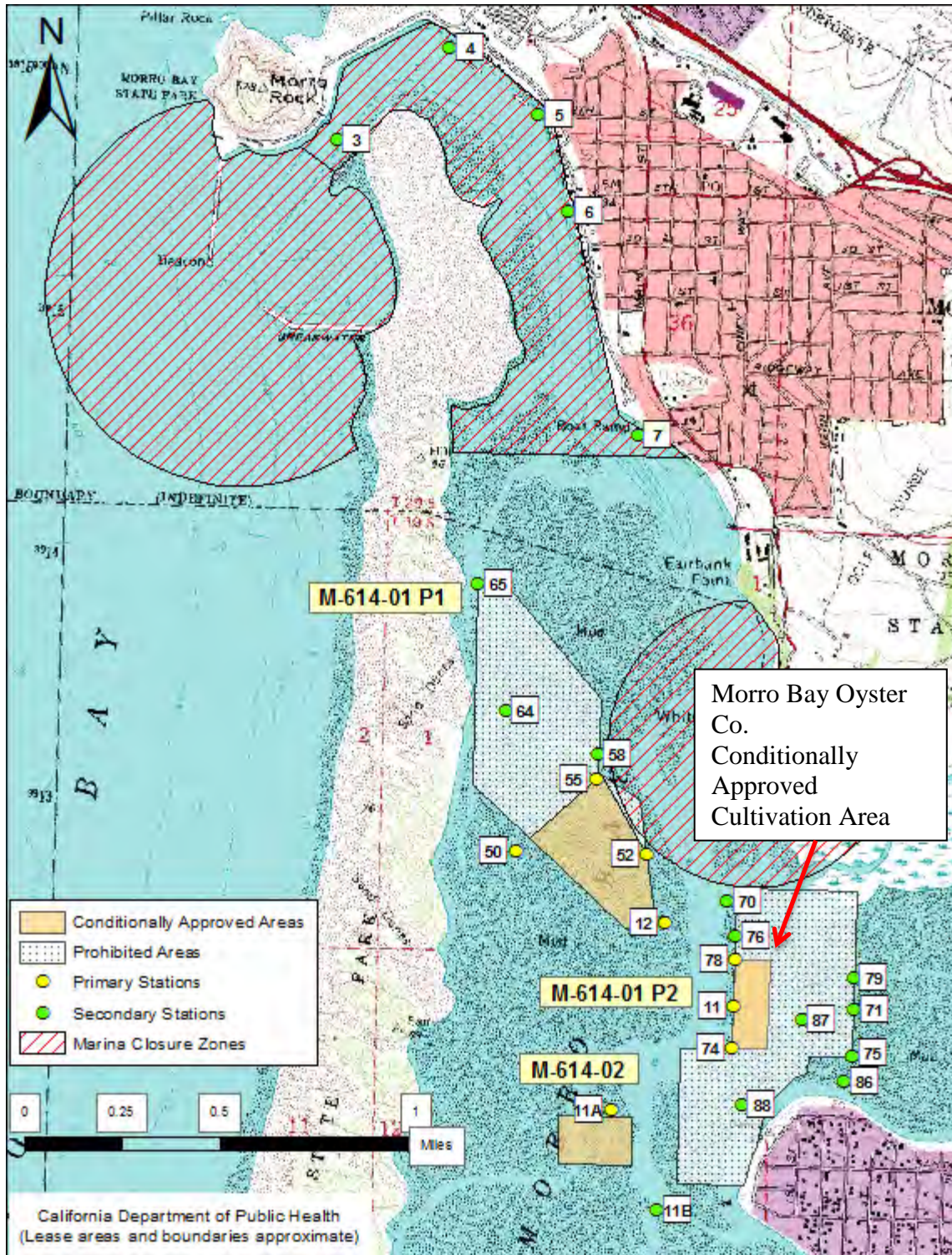
### Exhibit 3 – Configuration of Existing and Proposed Elevated Longline Cultivation Beds

The following figure shows the approximate spacing and configuration of four elevated longline cultivation beds with 15 210 foot long elevated longlines in each bed. Individual longlines are shown with blue and individual cultivation beds are outlined in yellow.

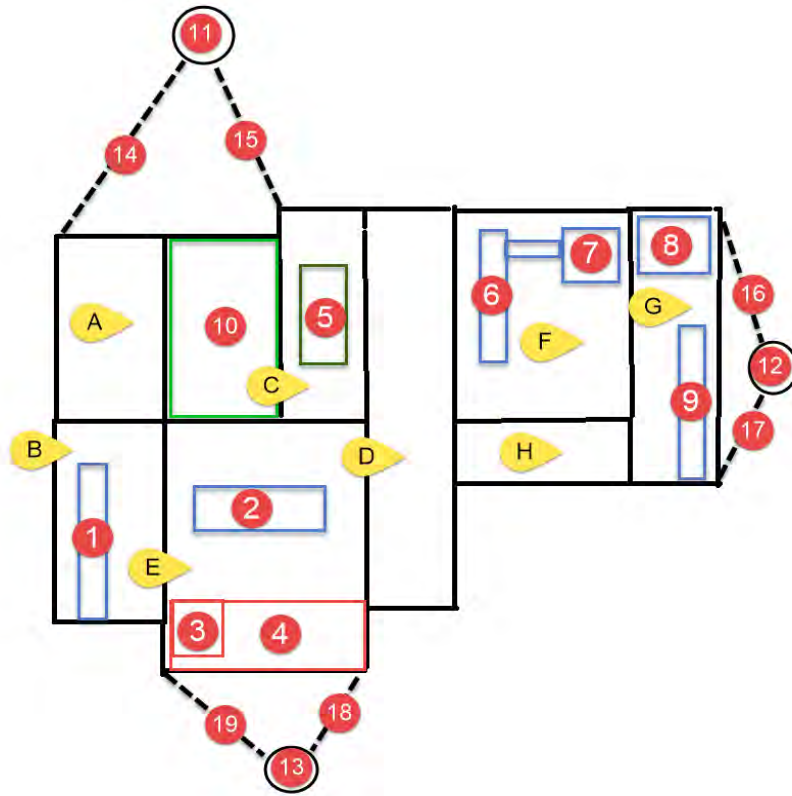




**Exhibit 4 – California Department of Public Health Map of Approved Shellfish Cultivation Areas**



## Exhibit 5 – Schematic Diagram of Work Platform



- 1) Hoist Ramp
- 2) Hand Sorting Table
- 3) Restroom / Handwash
- 4) Covered Material Storage
- 5) Repair Table
- 6) Tube Sorter
- 7) Hopper
- 8) Generator/tube storage
- 9) Winch Ramp
- 10) Underwater Holding

11-13) Moorings

14-19) Mooring Lines

- A) 11ft x 22ft barge
- B) 11ft x 24ft barge
- C) 10ft x 40ft barge
- D) 24ft x 20ft barge
- E) 16ft x 20ft barge
- F) 10ft x 24ft barge
- G) 8ft x 20ft barge
- H) #10 is 10ft x 22ft

\*The total square footage of the current work platform is 2,568sqft.