

CALIFORNIA COASTAL COMMISSION

SAN DIEGO AREA
7575 METROPOLITAN DRIVE, SUITE 103
SAN DIEGO, CA 92108-4421
(619) 767-2370



Th16b

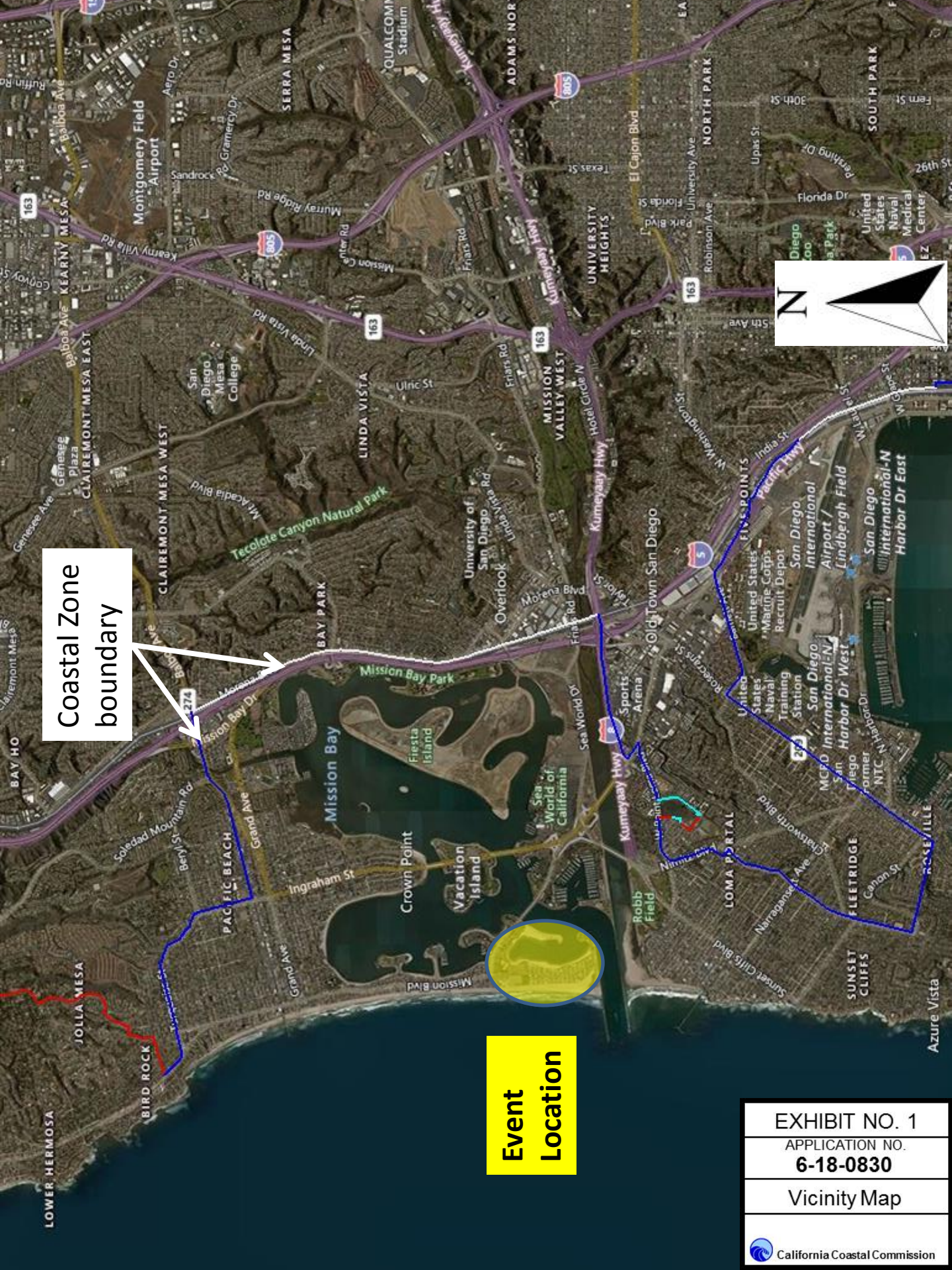
6-18-0830 (SAN DIEGO EXPLORATORY FOUNDATION)

MAY 9, 2019

EXHIBITS

Table of Contents

- Exhibit 1 – Vicinity Map
- Exhibit 2 – Aerial View
- Exhibit 3 – Project Footprint
- Exhibit 4 – Seat Distribution
- Exhibit 5 – Competition Schedule
- Exhibit 6 – Parking Lot Closure Plan
- Exhibit 7 – Rise Shae Geofence
- Exhibit 8 – Shuttle Plan
- Exhibit 9 – Ticket Pricing Plan



Coastal Zone
boundary

Event
Location

EXHIBIT NO. 1
APPLICATION NO.
6-18-0830
Vicinity Map



WS – water sports
 LS – land sports
 ACA – avian cons. Area
 WC – welcome center
 CF – cultural festival
 AE – ANOC Experience



WC

LS

AE

LS

LS

ACA

LS

WS

CF

WS

WS

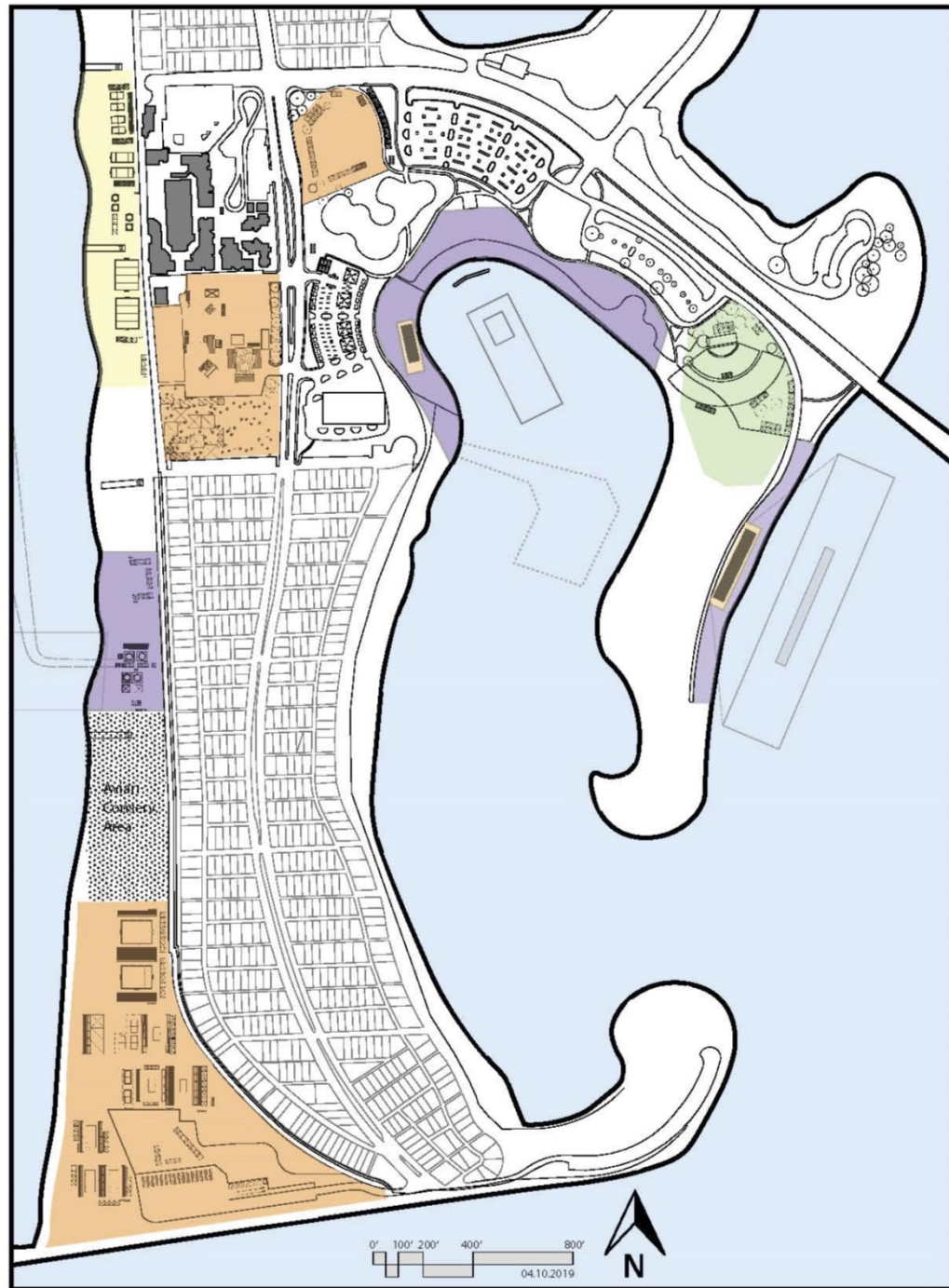
EXHIBIT NO. 2
 APPLICATION NO.
6-18-0830
 Aerial View

REVISED FOOTPRINT PROJECTED ATTENDANCE

04.09.19

-  AWBGSD EXPERIENCE
2,000
-  ANOC WORLD BEACH GAMES
16,000
-  CULTURAL FESTIVAL
15,000 (Ticket Required)
-  FREE ADMISSION - DAY
9,000


EXHIBIT NO. 3
APPLICATION NO. 6-18-0803
Project Footprint
California Coastal Commission



PROPOSED SEAT DISTRIBUTION

sport	competition days	Daily seats available	Ticket Distribution	Daily Free	Daily VIP	Daily GA	Total Seats
1 Aquathlon	3	200	30% FREE / 10% VIP / 60% GA	60	14	126	600
2 Wakeboard	3	200	30% FREE / 10% VIP / 60% GA	60	14	126	600
3 Waterski Jump	3	200	30% FREE / 10% VIP / 60% GA	60	14	126	600
BONITA COVE SUB-TOTAL		600	30% FREE / 10% VIP / 60% GA	180	42	378	
4 Basketball	4	1200	30% FREE / 10% VIP / 60% GA	360	84	756	4800
5 Bouldering	2	300	30% FREE / 10% VIP / 60% GA	90	21	189	600
6 Skateboarding	2	1496	30% FREE / 25% VIP / 45% GA	449	262	785	2992
ACTION SPORTS SUB-TOTAL		2996					
7 Kitefoil Racing	4	250	30% FREE / 10% VIP / 60% GA	75	18	158	1000
8 Swimming OW 5k	2	250	30% FREE / 10% VIP / 60% GA	75	18	158	500
10 Karate	2	500	30% FREE / 10% VIP / 60% GA	150	35	315	1000
15 Wrestling	2	500	30% FREE / 10% VIP / 60% GA	150	35	315	1000
GRANDSTAND SEATING		1500					
9 Handball	6	1200	30% FREE / 25% VIP / 45% GA	360	210	630	7200
Handball	6	600	30% FREE / 10% VIP / 60% GA	180	42	378	3600
Handball	6	600	30% FREE / 10% VIP / 60% GA	180	42	378	3600
11 Soccer	6	2500	30% FREE / 25% VIP / 45% GA	750	438	1313	15000
Soccer	6	1200	30% FREE / 10% VIP / 60% GA	360	84	756	7200
12 Surfing - long board	2	500	30% FREE / 10% VIP / 60% GA	150	35	315	1000
12 Surfing - short board	3	500	30% FREE / 10% VIP / 60% GA	150	35	315	1500
13 Tennis	4	800	30% FREE / 10% VIP / 60% GA	240	56	504	3200
14 Volleyball	4	2500	30% FREE / 25% VIP / 45% GA	750	438	1313	10000
Volleyball	4	500	30% FREE / 10% VIP / 60% GA	150	35	315	2000
SO MISSION BEACH SUB-TOTAL		10900					
GRAND TOTALS		15996		4979	1970	9047	67992
				31%	22%	47%	

 California Coastal Commission	EXHIBIT NO. 4
	APPLICATION NO.
	6-18-0803
	Seat Distribution

SEAT DISTRIBUTION PER SPORT/PER DAY

Map	Sport	Wed	Thur	Fri	Sat	Sun	Mon
1	Aquathlon	200	200	200			
2	Wakeboard			200	200	200	
3	Waterski Jump			200	200	200	
4	Basketball		1200	1200	1200	1200	
5	Bouldering	300	300				
6	Skateboarding					2500	2500
7	Kitefoil Racing			250	250	250	250
8	Swimming OW 5k			250	250		
10	Karate		500	500			
15	Wrestling				500	500	
9	Handball	1200	1200	1200	1200	1200	1200
9	Handball	600	600	600	600	600	600
9	Handball	600	600	600	600	600	600
11	Soccer	2500	2500	2500	2500	2500	2500
11	Soccer	1200	1200	1200	1200	1200	1200
12	Surfing - long board			500		500	
12	Surfing - short board		500		500		500
13	Tennis		800	800	800	800	
14	Volleyball		2500	2500		2500	2500
14	Volleyball		500	500		500	500
DAILY TOTAL SEATS		6600	12600	13200	10000	15250	12350

Projected Peak Attendance 4,000 8,000 10,000 16,000 16,000 10,000

TOTAL GRANDSTAND SEATING

70000

COMPLETE SCHEDULE

Rev . 04.29.19

ANOC WORLD BEACH GAMES SPORT SCHEDULE*

updated	WED 9-Oct	THU 10-Oct	FRI 11-Oct	SAT 12-Oct	SUN 13-Oct	MON 14-Oct
BONITA COVE						
1	AQUATHLON	12:30pm-5pm	12:30pm-5pm	2pm-5pm		
2	WAKEBOARD			11am-4pm	11:15am-6pm	10:45am-2:15pm
3	WATERSKI JUMP			8am-1pm	8am-1pm	9am-12:30pm
ACTION SPORTS						
4	BASKETBALL		7am-6pm	7am-6pm	10am-5pm	10am-5pm
5	BOULDERING	7am- 2:30pm	8am-3:30pm			
6	SKATEBOARDING					7am-6pm 9am-3:30pm
MISSION BEACH						
7	KITEFOIL RACING			1pm-6pm	1pm-6pm	1pm-6pm 1pm-6pm
8	OW SWIMMING			8am-3pm	8am-3pm	
10	KARATE		7am-5:30pm	7am-5:30pm		
15	WRESTLING				7am-5:30pm	7am-6pm
SOUTH MISSION BEACH						
9	HANDBALL	7am-5:45pm	7am-5:45pm	7am-2:45pm	7am-5:45pm	7am-5:45pm 7am-5:45pm
11	SOCCER	7am-2:45pm	7am-5:45pm	7am-5:45pm	8:30am-5:45pm	7am-2:45pm 8am-6pm
12	SURFING		7am-5pm	7am-1pm	7am-3pm	7am-12pm 7am-11am
13	TENNIS		8am-6pm	8am-5pm	8am-4pm	8am-4:15pm
14	VOLLEYBAL		7am-5pm	7am-5pm		7am-12:30pm 8am-12:30pm


*Includes 1 hour prior to competition for set up and 1 hour after competition for tear down, clean-up, etc.

ADMISSION FREE SPORT SCHEDULE

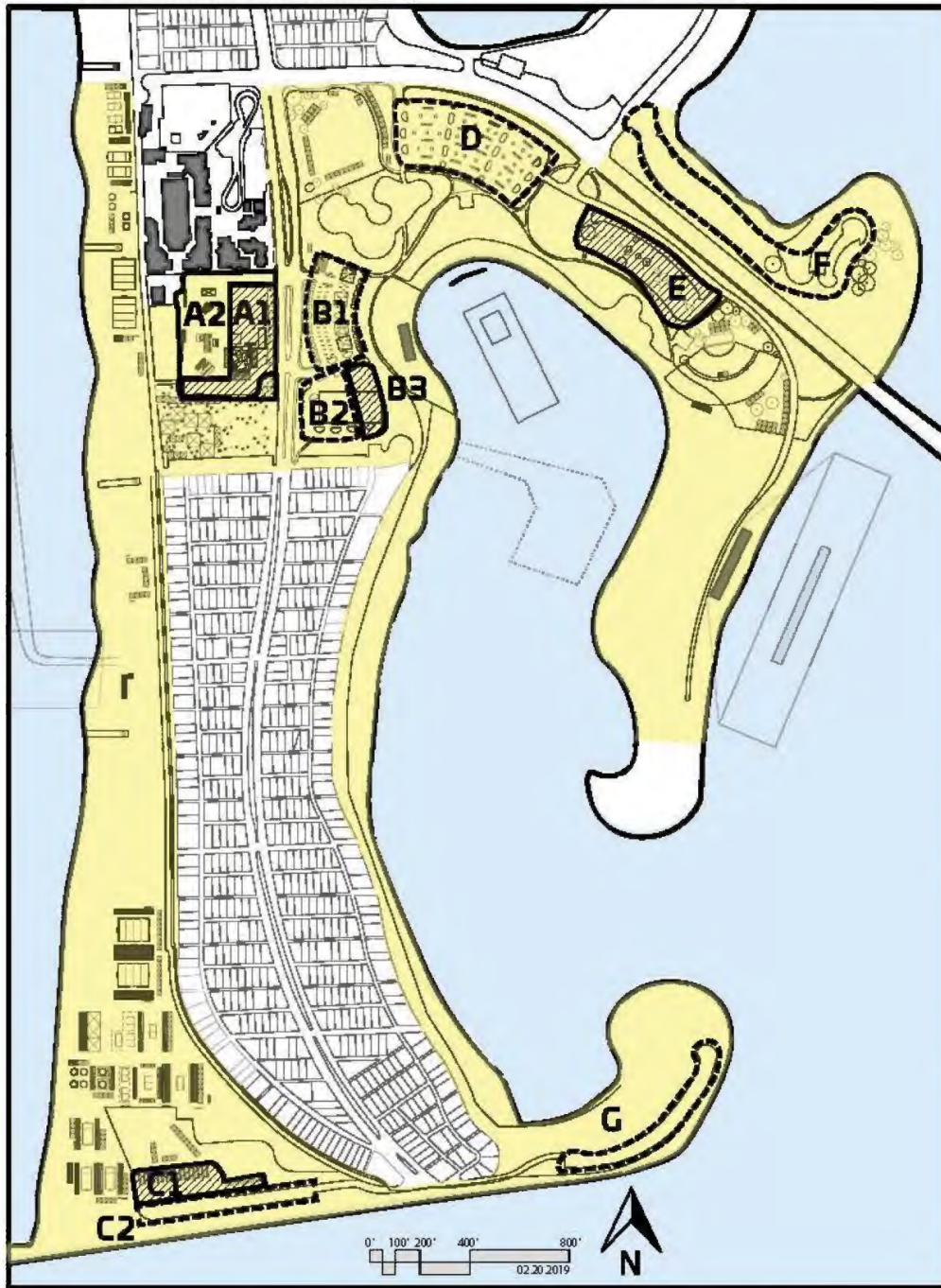
ANOC WORLD BEACH GAMES SPORT SCHEDULE*

	WED 9-Oct	THU 10-Oct	FRI 11-Oct	SAT 12-Oct	SUN 13-Oct	MON 14-Oct
BONITA COVE						
1	AQUATHLON	12:30pm-5pm	12:30pm-5pm	2pm-5pm		
2	WAKEBOARD			11am-4pm	11:15am-6pm	10:45am-2:15pm
3	WATERSKI JUMP			8am-1pm	8am-1pm	9am-12:30pm
MISSION BEACH						
7	KITEFOIL RACING			1pm-6pm	1pm-6pm	1pm-6pm 1pm-6pm
8	OW SWIMMING			8am-3pm	8am-3pm	
10	KARATE		7am-5:30pm	7am-5:30pm		
15	WRESTLING				7am-5:30pm	7am-6pm
SOUTH MISSION BEACH						
12	SURFING - SHORT		7am-5pm		7am-3pm	7am-11am
12	SURFING - LONG			7am-1pm		7am-12pm

*Includes 1 hour prior to competition for set up and 1 hour after competition for tear down, clean-up, etc.

 California Coastal Commission	EXHIBIT NO. 5
	APPLICATION NO. 6-18-0803
Competition Schedule	

PARKING LOT CLOSURE - MISSION BEACH



Rev . 04.03.19

Lot #	Lot Name	DATES		DAYS #	TIME		HOURS		PARKING USED		
		Start	End		Start	End	Daily	Total	Standard	ADA	Total
A1	Mission Beach	23-Sep	21-Oct	29			24	696	215	4	219
A2	Mission Beach	30-Sep	18-Oct	19			24	456	236	8	244
B1	Bonita Cove West	RELEASED TO THE CITY: OPEN TO THE PUBLIC (227 SPACES)									
B2	Bonita Cove West	RELEASED TO THE CITY: OPEN TO THE PUBLIC (146 SPACES)									
B3	Bonita Cove West	23-Sep	21-Oct	29			24	696	91	0	91
C1	South Mission Beach	23-Sep	21-Oct	29			24	696	100	4	104
C2	South Mission Beach	7-8	15-18	6			24	144	168	0	168
D	Bonita Cove	RELEASED TO THE CITY: OPEN TO THE PUBLIC (469 SPACES)									
E	Bonita Cove East	8-Oct	14-Oct	6	6:00	22:00	16	96	222	5	227
F	Ventura Cove	RELEASED TO THE CITY: OPEN TO THE PUBLIC (276 SPACES)									
G	Mission Point	RELEASED TO THE CITY: OPEN TO THE PUBLIC (139 SPACES)									
TOTALS									1032	21	1053

EXHIBIT NO. 6
 APPLICATION NO.
6-18-0830
 Parking Lot Closure
 Plan

RIDESHARE GEOFENCING



EXHIBIT NO. 7
APPLICATION NO.
6-18-0830
Ride Share Geofence



California Coastal Commission

Shuttle Plan

EXHIBIT NO. 8

APPLICATION NO. 6-18-0830

ANOC **ANOC WORLD BEACH GAMES** SAN DIEGO 2019

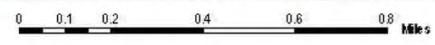


Figure A
Spectator Mobility Plan (Preliminary)
 2019 ANOC WORLD BEACH GAMES

Proposed Ticket Pricing

TICKET PRICES	
Per Person/Per Day*	Description
\$25	General Admission Round trip shuttle bus transportation Admission to the Games No Assigned seating. First come first serve basis
\$20	General Admission - Discounted Students / Veterans / Seniors / Disabled Mission Beach Residents w/Proof of Residency** Valid College Student ID required Valid Picture ID required Advanced sales preferred Active Duty Personnel w/Valid ID K-12 Free Admission w/supervising adult – Opening Day
\$100	Grand Stand Seating - Assigned Seats Action Sports / Soccer / Volleyball Qualifying rounds
\$200	Grand Stand Seating – Final Match
\$250	Grand Stand - VIP Preferred Seating Courtside shaded assigned seats
\$350	Grand Stand - VIP Preferred Seating – Final Match
\$150	Cultural Festival - General Admission Bonita Cove East 7 pm -11 pm Live Musical Performances
\$250	Cultural Festival – VIP Seating
*Prices subject to change	
** Proof of Residency can be any utility bill less than 45 days old.	



EXHIBIT NO. 9

APPLICATION NO.
6-18-0830

Proposed Ticket Pricing Plan

 California Coastal Commission