

CALIFORNIA COASTAL COMMISSION

SOUTH COAST AREA OFFICE
301 E. OCEAN BOULEVARD, SUITE 300
LONG BEACH, CA 90802
(562) 590-5071



W26d

5-19-0225 (California Department of Parks and Recreation)

September 11, 2019

EXHIBITS

Table of Contents

Exhibit 1 – Project Location

Exhibit 2 – Site Plans

Exhibit 3 – Project Avoidance and Minimization Measures

Exhibit 1 – Project Location

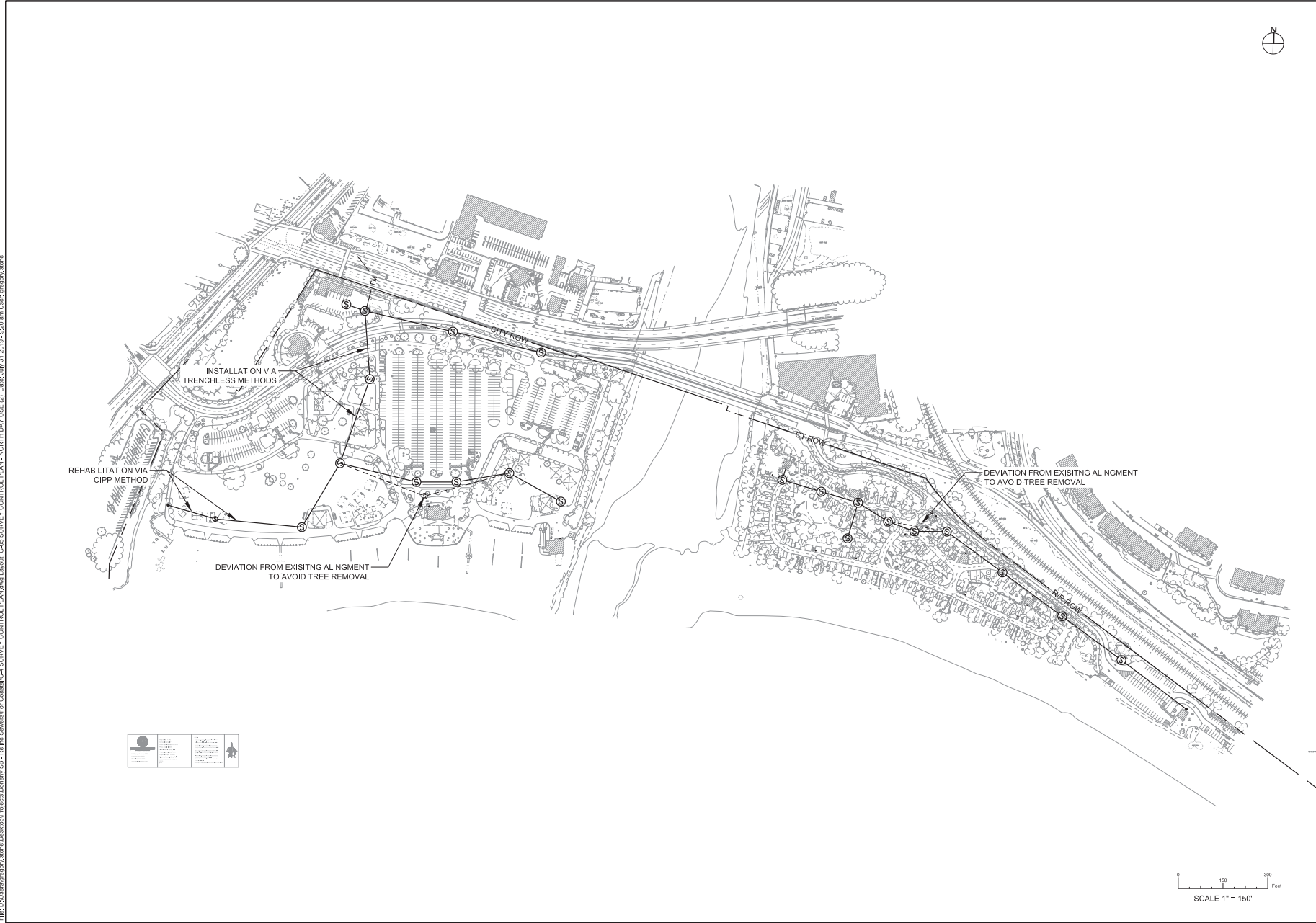




■ proposed sewer alignment

Exhibit 2a - Site Plan Overview

File: D:\Users\gregory.stone\Desktop\Projects\Doheny SB - Refine Sewers\For Coastal\04 SURVEY CONTROL PLAN.dwg User: Gregor, Date: July 31 2019 12:20 am User: gregory.stone



ACQUISITION & DEVELOPMENT DIVISION
One Capitol Mall
Sacramento, CA
95814-3229



CALIFORNIA STATE FIRE MARSHAL APPROVED
Approval of this plan does not authorize or approve any omission of design from applicable regulations. Final approvals subject to field inspection. One set of approved plans shall be available on the project site at all times.

Reviewed by: _____ Date: _____

DPR ACCESS COMPLIANCE REVIEW ACCESSIBILITY SECTION
CERTIFICATION # _____

Reviewed by: _____ Date: _____

ACCESSIBILITY COMPLIANCE AND STATE FIRE MARSHAL REVIEW ORIGINALS ARE ON FILE AT THE DEPARTMENT OF PARKS AND RECREATION NORTHERN SERVICE CENTER

DESIGNED BY: GREGORY STONE
DRAWN BY: GREGORY STONE
CHECKED BY: SUPERVISOR
DATE: 04/08/2019

REVISIONS	DATE

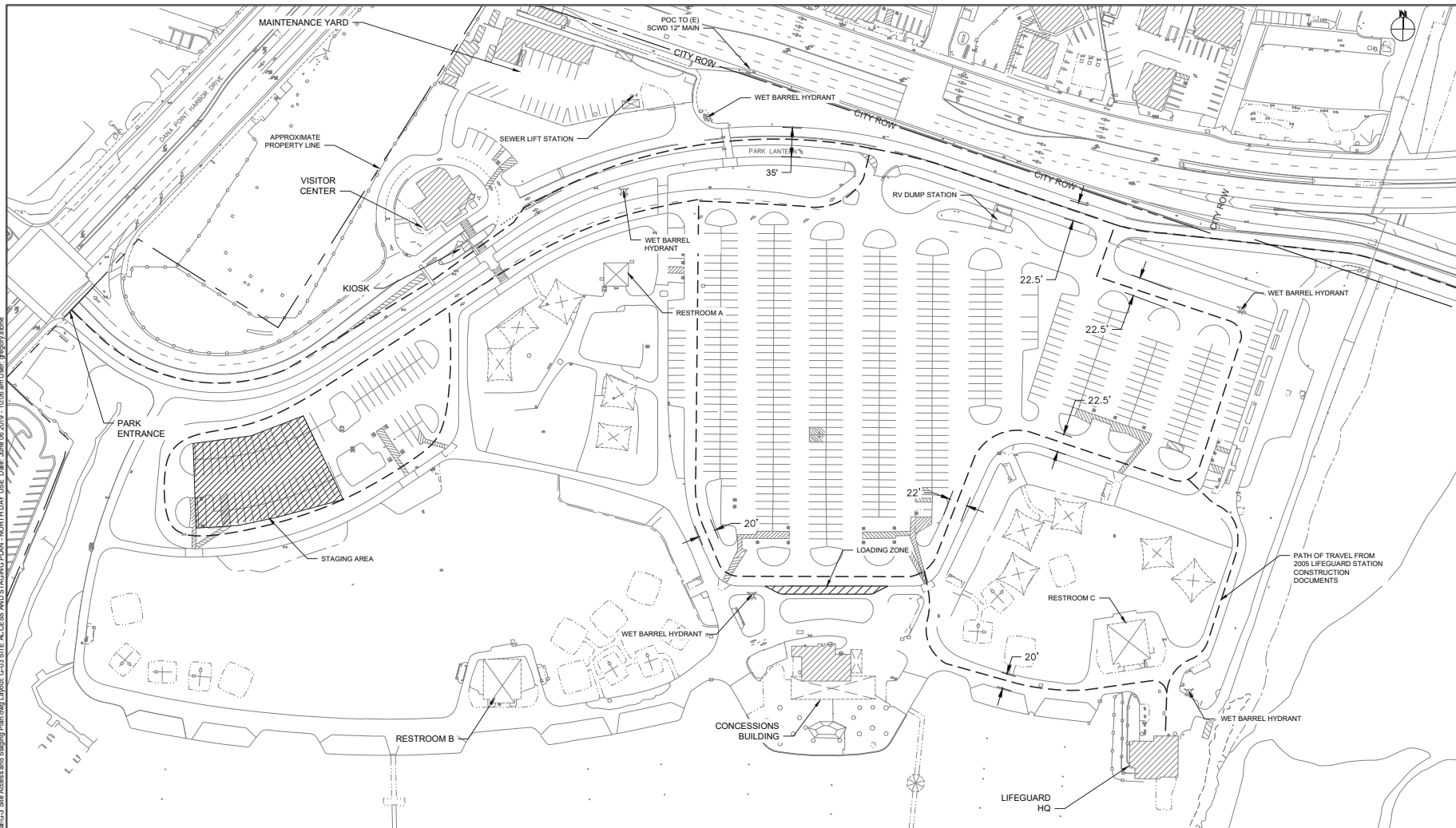
DOHENY STATE BEACH
RELINE/REPLACE SEWER LINES AND REHABILITATE LIFT STATIONS
SEWER SYSTEM OVERVIEW

010942.06

SHEET NO.
1

0 150 300 Feet
SCALE 1" = 150'

Exhibit 2b - Public Access and Staging Plan



File: L:\19-sad-cod-222\ghenny-410\revised\Design\General\G3_Site Access and Staging Plan.dwg Layout: G-03 SITE ACCESS AND STAGING PLAN - NORTH DAY USE Date: June 06 2019 - 10:06 am User: gregory.stone

LEGEND

- FIRE ACCESS ROUTE
- APPROXIMATE PROPERTY BOUNDARY
- ⊗ FIRE HYDRANT

STAGING NOTES:

1. LOCATE STAGING AREAS ON PAVED OR DISTURBED AREAS ONLY, AND AS INDICATED ON THE PLANS. ANY CHANGE OR RELOCATION OF STAGING AREAS SHALL BE APPROVED IN WRITING BY STATE'S REPRESENTATIVE.
2. STAGING AREAS SHALL HAVE TEMPORARY FENCING AND STORM WATER BMPs IN PLACE.
3. ALL STAGING AREAS SHALL BE IMPLEMENTED IN ACCORDANCE WITH THE PROJECT SPECIFICATIONS, PLANS, AND SWPPP.
4. PERFORM WORK IN SEQUENCING PROVIDED IN "SUMMARY" SPECIFICATIONS.
5. SIDEWALK AND PAVEMENT SHALL BE KEPT FREE OF DEBRIS AND STREET ACCESS SHALL BE SWEEPED CLEAN, AT A MINIMUM, AT THE END OF EACH WORKING DAY.
6. CONTRACTOR SHALL IMPLEMENT TEMPORARY WATER QUALITY CONTROL MEASURES PER SECTION 311235 - STORMWATER POLLUTION PREVENTION PLAN
7. CONSTRUCTION MATERIALS SUCH AS PAINT MORTAR, CONCRETE SLURRY, FUELS, ETC. SHALL BE STORED, HANDLED, AND DISPOSED OF IN A MANNER WHICH MINIMIZES THE POTENTIAL FOR STORM WATER CONTAMINATION.
8. MAINTAIN ACCESS ROUTES TO ALL ACTIVE FIRE HYDRANTS THROUGHOUT CONSTRUCTION. IF WORK NECESSITATES CLOSURE OF AN ACCESS ROUTE, PROVIDE AN ALTERNATE ACCESS ROUTE FOR THE DURATION OF THE CLOSURE.
9. LOCATE ALL STAGING AREAS A MINIMUM OF 100 FEET FROM SAN JUAN CREEK, AND FROM THE HIGH TIDE LINE.
10. MEASURES SHALL BE IMPLEMENTED (E.G., SILT FENCING, FIBER ROLLS, ETC.) TO ENSURE THAT NO SOIL, CONSTRUCTION DEBRIS OR OTHER MATERIALS ARE DISCHARGED OR ALLOWED TO ENTER SAN JUAN CREEK OR TO THE PACIFIC OCEAN.
11. CONTRACTOR MAY STAGE IN PORTION OF PARKING LOT SHOWN.
12. COORDINATE ANY MODIFICATIONS OR RELOCATION OF STAGING AREAS WITH STATE REPRESENTATIVE AND STATE PARKS DISTRICT STAFF.



ACQUISITION & DEVELOPMENT DIVISION
One Capitol Mall
Sacramento, CA
95814-3229



CALIFORNIA STATE FIRE MARSHAL-APPROVED
Approval of this plan does not authorize or approve any omission of deviation from applicable regulations. Final approval is subject to field inspection. One set of approved plans shall be available on the project site at all times.
Reviewed by: _____ Date: _____

SPR ACCESS COMPLIANCE REVIEW
ACCESSIBILITY SECTION
CERTIFICATION # _____
Reviewed by: _____ Date: _____

ACCESSIBILITY COMPLIANCE AND STATE FIRE MARSHAL SIGNED ORIGINALS ARE ON FILE AT THE DEPARTMENT OF PARKS AND RECREATION, NORTHERN SERVICE CENTER.

DESIGNED BY: GREGORY STONE
DRAWN BY: GREGORY STONE
CHECKED BY: SUPERVISOR
DATE: 04/08/2019

REVISIONS	DATE

DOHENY STATE BEACH
RELINE/REPLACE SEWER LINES AND REHABILITATE LIFT STATIONS
SITE ACCESS AND STAGING PLAN - NORTH DAY USE

010942.04

SHEET NO.
G-03
04 OF 54

Beach Access

Map of beach access points and routes of travel.

● BEACH ACCESS POINT

▬ BEACH ACCESS ROUTE



File: L:\19-sad-cod\223\shmy-4\0\relief_served\Design\LAND ARCHITECTURE REMOVAL PLAN.dwg Layout: L-0.2 KEY MAP CAMPGROUND Date: April 22, 2019 - 12:21 pm User: pschwe



ACQUISITION & DEVELOPMENT DIVISION
One Capitol Mall
Sacramento, CA
95814-3229



CALIFORNIA STATE FIRE MARSHAL APPROVED
Approval of this plan does not authorize or approve any omission or deviation from applicable regulations. Final approval is subject to field inspection. One set of approved plans shall be available on the project site at all times.
Reviewed by: _____ Date: _____

DPR ACCESS COMPLIANCE REVIEW
ACCESSIBILITY SECTION
CERTIFICATION # _____
Reviewed by: _____ Date: _____

ACCESSIBILITY COMPLIANCE AND STATE FIRE MARSHAL SIGNED ORIGINALS ARE ON FILE AT THE DEPARTMENT OF PARKS AND RECREATION, NORTHERN SERVICE CENTER.

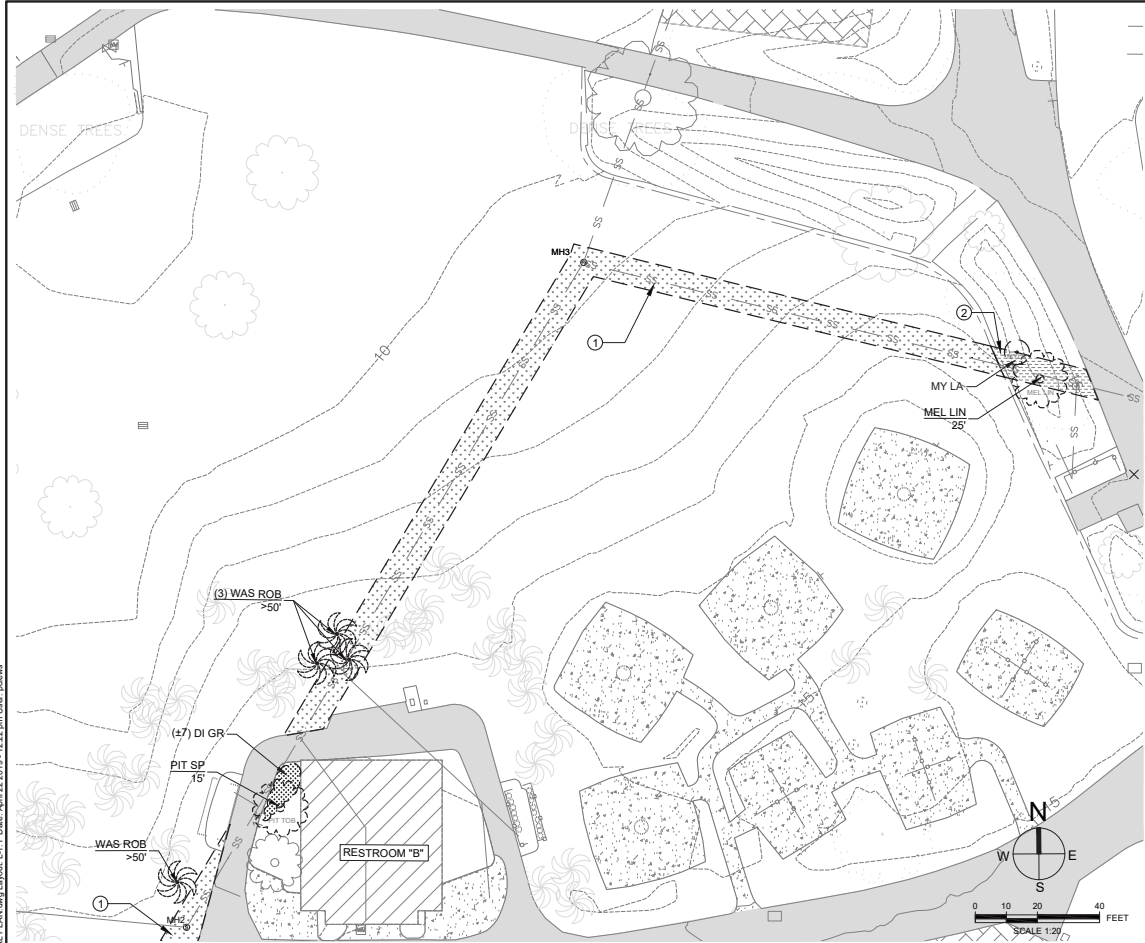
DESIGNED: PC
DRAWN: PC
CHECKED: BP
DATE: 04/08/2019

REVISIONS	DATE

DOHERTY STATE BEACH
RELINE/REPLACE SEWER LINES AND REHABILITATE LIFT STATIONS
KEY MAP CAMPGROUND

010942.XXX

SHEET NO.
L-0.2
XXX OF 54



File: L:\18-cad-cod-223\shrub-removal-plan.dwg Layout: L-1.1 Date: April 22, 2019 - 12:22 pm User: jdoherty

GENERAL DEMOLITION NOTES:

1. FEATURES NOT SPECIFICALLY IDENTIFIED FOR DEMOLITION ARE TO REMAIN.
2. CONTRACTOR SHALL TAKE ALL PRECAUTIONS NECESSARY TO PROTECT IN PLACE ALL FEATURES NOT INDICATED FOR DEMOLITION.
3. WORK LIMITS TO BE DELINEATED BY THE CONTRACTOR AND FIELD VERIFIED BY THE STATE REPRESENTATIVE PRIOR TO THE START OF OPERATIONS.
4. CONTRACTOR TO FIELD VERIFY AND TAG ALL TREES & SHRUBS THAT WILL REQUIRE REMOVAL. CONSULT STATE REPRESENTATIVE PRIOR TO PLANT REMOVAL.
5. ALL TREES AND ROOTS ARE TO BE PROTECTED UNLESS DESIGNATED OTHERWISE, PER SPECIFICATION SECTION 015640 - TEMPORARY TREE AND PLANT PROTECTION. WORK WITHIN THE TREE PROTECTION ZONE SHALL BE PERFORMED PER THE SPECIFICATIONS AND WITH A NATURAL RESOURCES SPECIALIST PRESENT.
6. TRENCHING SHALL BE PERFORMED IN THE PRESENCE OF A MONITOR.
7. TREE MATERIALS NOT USED FOR SITE FEATURES SHALL BE SHREDDED AND USED AS MULCH.
8. SITE FURNISHINGS SUCH AS PICNIC TABLES, FIRE PITS, BBQ GRILLS WHEEL STOPS ETC. SHALL BE SALVAGED AND RELOCATED. DAMAGED SITE FURNISHINGS DEEMED UNSUITABLE BY THE STATE REPRESENTATIVE SHALL BE REPLACED AT THE CONTRACTORS EXPENSE.
9. DEMOLISHED MATERIALS SHALL BE DISPOSED OF OFF-SITE AT THE CONTRACTORS EXPENSE UNLESS OTHERWISE DIRECTED BY THE STATE REPRESENTATIVE.
10. ALL SIGNAGE SHALL BE SALVAGED AND REPLACED PER PLAN OR AS DIRECTED BY THE STATE REPRESENTATIVE.

TREE DEMO LEGEND

ABBREVIATION	BOTANICAL NAME	COMMON NAME	TOTAL DEMOED SITE WIDE
CUP ANA	CUPANIOPSIS ANACARDIODES	CARROTWOOD TREE	1
EUC SP	EUCALYPTUS SP.	EUCALYPTUS TREE	3
GEI PAR	GEIJERA PARVIFOLRA	AUSTRALIAN WILLOW	1
MEL LIN	MELALEUCA LINARIFOLIA	FLAXLEAF PAPERBARK TREE	3
MEL NES	MELALEUCA NESOPUILA	PINK MELALEUCA	26
PIT TOB	PITTOSPORUM TOBIRA.	TOBIRA	1
PLA RAC	PLATANUS RACEMOSA	SYCAMORE TREE	2
PIN TOR	PINUS TORREYANA	TORREY PINE TREE	1
PINE SP	PINUS SP.	PINE TREE	1
POD MAC	PODOCARPUS MACROPHYLLUS	YEW PINE	1
PRU ILI ILI	PRUNUS ILICIFOLIA SSP ILICIFOLIA	HOLLY LEAFED CHERRY	2
PRU ILI LYO	PRUNUS ILICIFOLIA SSP LYONII	CATALINA CHERRY	1
SCH TER	SCHINUS TEREBINTHIFOLIUS	BRAZILIAN PEPPER TREE	1
WAS ROB	WASHINGTONIA ROBUSTA	MEXICAN FAN PALM	8

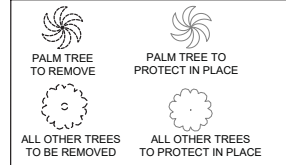
SHRUB DEMO LEGEND

ABBREVIATION	BOTANICAL NAME	COMMON NAME	TOTAL DEMOED SITE WIDE
*DI GR	DIETES GRANDIFLORA	FORTNIGHT LILLY	±17
EL AN	ELAEAGUNUS ANGUSTIFOLIA	RUSSIAN OLIVE	3
HE AR	HETEROMELES ARBUTIFOLIA	TOYON	11
MY LA	MYOPORUM LAETUM	NO COMMON NAME	25
RH IN	RHUS INTEGRIFOLIA	LEMONADE BERRY	9
SA ME	SAMBUCUS MEXICANA	MEXICAN ELDBERRY	1
TE CA	TECOMA CAPENSIS	CAPE HONEYSUCKLE	1
CR SP	CRASSULA SP	JADE PLANT	1

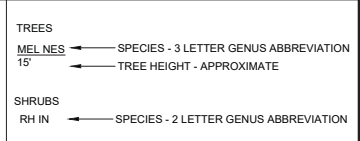
*NOTE: DIETIES TO BE DIVIDED, SALVAGED AND PROTECTED FOR REPLANTING



SYMBOLS



PLANT CALLOUT ABBREVIATIONS



ACQUISITION & DEVELOPMENT DIVISION
 One Capitol Mall
 Sacramento, CA
 95814-3229



CALIFORNIA STATE FIRE MARSHAL APPROVED
 Approval of this plan does not authorize or approve any omission of deviation from applicable regulations. Final approval is subject to field inspection. One set of approved plans shall be available on the project site at all times.
 Reviewed by: _____ Date: _____

DPR ACCESS COMPLIANCE REVIEW
 ACCESSIBILITY SECTION
 CERTIFICATION # _____
 Reviewed by: _____ Date: _____

ACCESSIBILITY COMPLIANCE AND STATE FIRE MARSHAL SEENED ORIGINALS ARE ON FILE AT THE DEPARTMENT OF PARKS AND RECREATION, NORTHERN SERVICE CENTER.

DESIGNED: PC
 DRAWN: PC
 CHECKED: BP
 DATE: 04/08/2019

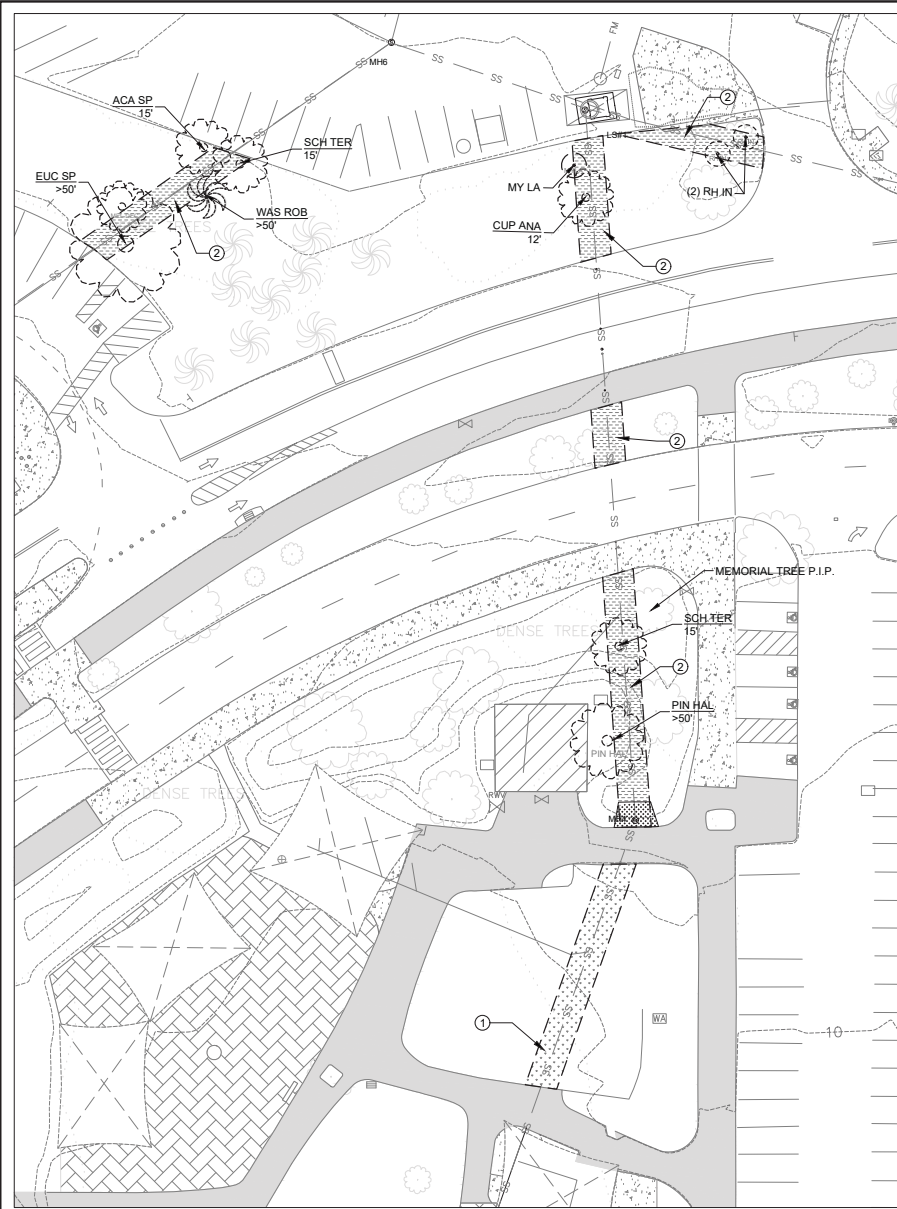
REVISIONS	DATE

DOHENY STATE BEACH
 RELINE/REPLACE SEWER LINES AND REHABILITATE LIFT STATIONS
 DEMOLITION PLAN - DAY USE AREA

010942.XXX

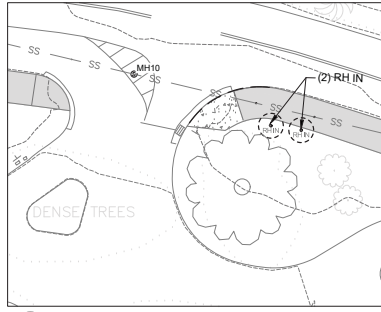
SHEET NO.
L-1.1
 XXX OF 54

File: L:\19-coast-cood\2020\shelby-4\0\retrieval\Design\LAND ARCHITECTURE REMOVAL PLAN.dwg Layout: L-1.3 Date: April 22, 2019 - 12:23 pm User: jdoherty



A DEMOLITION - DAY USE AREA

SCALE@22X34 1:20



B DEMOLITION - DAY USE AREA

SCALE@22X34 1:20

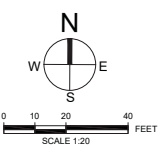
TREE DEMO LEGEND			
ABBREVIATION	BOTANICAL NAME	COMMON NAME	TOTAL DEMOED SITE WIDE
CUP ANA	CUPANIOPSIS ANACARDIODES	CARROTWOOD TREE	1
EUC SP	EUCALYPTUS SP.	EUCALYPTUS TREE	3
GEI PAR	GEIJERA PARVIFOLRA	AUSTRALIAN WILLOW	1
MEL LIN	MELALEUCA LINARIFOLIA LYONII	FLAXLEAF PAPERBARK TREE	3
MEL NES	MELALEUCA NESOPIULA	PINK MELALEUCA	26
PIT TOB	PITTOSPORUM TOBIRA	TOBIRA	1
PLA RAC	PLATANUS RACEMOSA	SYCAMORE TREE	2
PIN TOR	PINUS TORREYANA	TORREY PINE TREE	1
PINE SP	PINUS SP.	PINE TREE	1
POD MAC	PODOCARPUS MACROPHYLLUS	YEW PINE	1
PRU ILI ILI	PRUNUS ILICIFOLIA SSP ILICIFOLIA	HOLLY LEAFED CHERRY	2
PRU ILI LYO	PRUNUS ILICIFOLIA SSP LYONII	CATALINA CHERRY	1
SCH TER	SCHINUS TEREBINTHIFOLIUS	BRAZILIAN PEPPER TREE	1
WAS ROB	WASHINGTONIA ROBUSTA	MEXICAN FAN PALM	8

SHRUB DEMO LEGEND			
ABBREVIATION	BOTANICAL NAME	COMMON NAME	TOTAL DEMOED SITE WIDE
*DI GR	DIETES GRANDIFLORA	FORTNIGHT LILLY	±17
EL AN	ELAEAGUNUS ANGUSTIFOLIA	RUSSIAN OLIVE	3
HE AR	HETEROMELES ARBUTIFOLIA	TOYON	11
MY LA	MYOPORUM LAETUM	NO COMMON NAME	25
RH IN	RHUS INTEGRIFOLIA	LEMONADE BERRY	9
SA ME	SAMBUCUS MEXICANA	MEXICAN ELDERBERRY	1
TE CA	TECOMA CAPENSIS	CAPE HONEYSUCKLE	1
CR SP	CRASSULA SP	JADE PLANT	1

*NOTE: DIETIES TO BE DIVIDED, SALVAGED AND PROTECTED FOR REPLANTING

- (1) (D) LAWN
- (2) (D) PLANTING BEDS OR LANDSCAPED AREA
- (3) (D) CONCRETE

SEE DEMOLITION NOTES SHEET L-1.1



SYMBOLS		PLANT CALLOUT ABBREVIATIONS	
	PALM TREE TO REMOVE		PALM TREE TO PROTECT IN PLACE
	ALL OTHER TREES TO BE REMOVED		ALL OTHER TREES TO PROTECT IN PLACE
		TREES	
		MEL NES	← SPECIES - 3 LETTER GENUS ABBREVIATION
		15'	← TREE HEIGHT - APPROXIMATE
		SHRUBS	
		RH IN	← SPECIES - 2 LETTER GENUS ABBREVIATION



ACQUISITION & DEVELOPMENT DIVISION
One Capitol Mall
Sacramento, CA
95814-3229



CALIFORNIA STATE FIRE MARSHAL APPROVED
Approval of this plan does not authorize or approve any omission of deviation from applicable regulations. Final approval is subject to field inspection. One set of approved plans shall be available on the project site at all times.
Reviewed by: _____ Date: _____

DRP ACCESS COMPLIANCE REVIEW
ACCESSIBILITY SECTION
CERTIFICATION# _____
Reviewed by: _____ Date: _____

ACCESSIBILITY COMPLIANCE AND STATE FIRE MARSHAL SEENED ORIGINALS ARE ON FILE AT THE DEPARTMENT OF PARKS AND RECREATION, MODERN SERVICE CENTER.

DESIGNED: PC
DRAWN: PC
CHECKED: BP
DATE: 04/08/2019

REVISIONS	DATE

DOHENY STATE BEACH
RELINE/REPLACE SEWER LINES AND REHABILITATE LIFT STATIONS
DEMOLITION PLAN - DAY USE AREA

010942.XXX

SHEET NO.
L-1.3
XXX OF 54



ACQUISITION & DEVELOPMENT DIVISION
One Capitol Mall
Sacramento, CA
95814-3229



CALIFORNIA STATE FIRE MARSHAL - APPROVED
Approval of this plan does not authorize or approve any omission or deviation from applicable regulations. Final approval is subject to field inspection. One set of approved plans shall be available on the project site at all times.
Reviewed by: _____ Date: _____

DPR ACCESS COMPLIANCE REVIEW
ACCESSIBILITY SECTION
CERTIFICATION # _____
Reviewed by: _____ Date: _____

ACCESSIBILITY COMPLIANCE AND STATE FIRE MARSHAL SEENED ORIGINALS ARE ON FILE AT THE DEPARTMENT OF PARKS AND RECREATION, NORTHERN SERVICE CENTER.

DESIGNED: PC
DRAWN: PC
CHECKED: BP
DATE: 04/08/2019

REVISIONS	DATE



TREE DEMO LEGEND

ABBREVIATION	BOTANICAL NAME	COMMON NAME	TOTAL DEMOED SITE WIDE
CUP ANA	CUPANIOPSIS ANACARDIODES	CARROTWOOD TREE	1
EUC SP	EUCALYPTUS SP.	EUCALYPTUS TREE	3
GEI PAR	GEJERA PARVIFOLRA	AUSTRALIAN WILLOW	1
MEL LIN	MELALEUCA LINARIFOLIA	FLAXLEAF PAPERBARK TREE	3
MEL NES	MELALEUCA NESOPIULA	PINK MELALEUCA	26
PIT TOB	PITTIOSPORUM TOBIRA	TOBIRA	1
PLA RAC	PLATANUS RACEMOSA	SYCAMORE TREE	2
PIN TOR	PINUS TORREYANA	TORREY PINE TREE	1
PINE SP	PINUS SP.	PINE TREE	1
POD MAC	PODOCARPUS MACROPHYLLUS	YEW PINE	1
PRU ILI ILI	PRUNUS ILICIFOLIA SSP ILICIFOLIA	HOLLY LEAFED CHERRY	2
PRU ILI LYO	PRUNUS ILICIFOLIA SSP LYONII	CATALINA CHERRY	1
SCH TER	SCHINUS TEREBINTHIFOLIUS	BRAZILIAN PEPPER TREE	1
WAS ROB	WASHINGTONIA ROBUSTA	MEXICAN FAN PALM	8

SEE DEMOLITION NOTES SHEET L-1.1

SHRUB DEMO LEGEND

ABBREVIATION	BOTANICAL NAME	COMMON NAME	TOTAL DEMOED SITE WIDE
*DI GR	DIETES GRANDIFLORA	FORTNIGHT LILLY	±17
EL AN	ELAEAGUNUS ANGUSTIFOLIA	RUSSIAN OLIVE	3
HE AR	HETEROMELES ARBUTIFOLIA	TOYON	11
MY LA	MYOPORUM LAETUM	NO COMMON NAME	25
RH IN	RHUS INTEGRIFOLIA	LEMONADE BERRY	9
SA ME	SAMBUCUS MEXICANA	MEXICAN ELDERBERRY	1
TE CA	TECOMA CAPENSIS	CAPE HONEYSUCKLE	1
CR SP	CRASSULA SP	JADE PLANT	1

*NOTE: DIETIES TO BE DIVIDED, SALVAGED AND PROTECTED FOR REPLANTING

- (D) LAWN
- (2) (D) PLANTING BEDS OR LANDSCAPED AREA
- (3) (D) CONCRETE

SYMBOLS

- PALM TREE TO REMOVE
- PALM TREE TO PROTECT IN PLACE
- ALL OTHER TREES TO BE REMOVED
- ALL OTHER TREES TO PROTECT IN PLACE

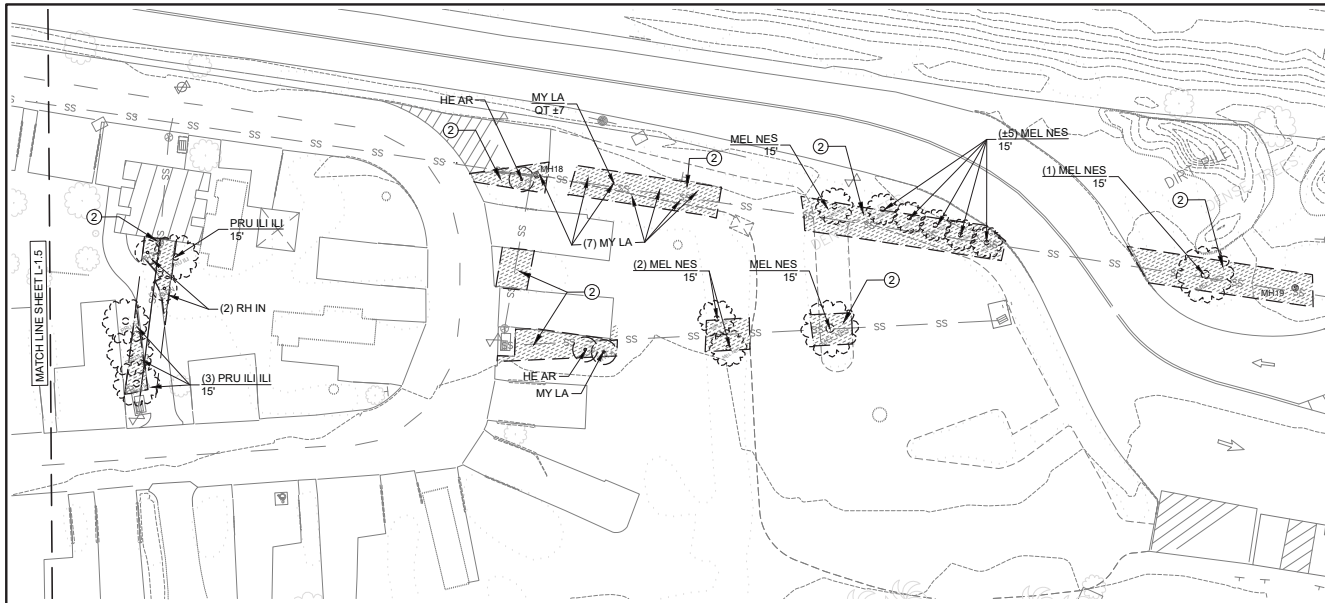
PLANT CALLOUT ABBREVIATIONS

- TREES**
- MEL NES ← SPECIES - 3 LETTER GENUS ABBREVIATION
15' ← TREE HEIGHT - APPROXIMATE
- SHRUBS**
- RH IN ← SPECIES - 2 LETTER GENUS ABBREVIATION

DOHENY STATE BEACH
RELINE/REPLACE SEWER LINES AND REHABILITATE LIFT STATIONS
DEMOLITION PLAN - CAMPGROUND

010942.XXX

SHEET NO.
L-1.5
XXX OF 54



- (D) LAWN
- (D) PLANTING BEDS OR LANDSCAPED AREA
- (D) CONCRETE

SEE DEMOLITION NOTES SHEET L-1.1

TREE DEMO LEGEND

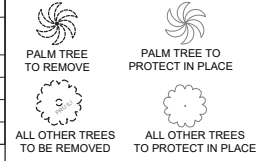
ABBREVIATION	BOTANICAL NAME	COMMON NAME	TOTAL DEMOED SITE WIDE
CUP ANA	CUPANIOPSIS ANACARDIODES	CARROTWOOD TREE	1
EUC SP	EUCALYPTUS SP.	EUCALYPTUS TREE	3
GEI PAR	GEIJERA PARVIFOLRA	AUSTRALIAN WILLOW	1
MEL LIN	MELALEUCA LINARIFOLIA	FLAXLEAF PAPERBARK TREE	3
MEL NES	MELALEUCA NESOPIULA	PINK MELALEUCA	26
PIT TOB	PITTOSPORUM TOBIRA	TOBIRA	1
PLA RAC	PLATANUS RACEMOSA	SYCAMORE TREE	2
PIN TOR	PINUS TORREYANA	TORREY PINE TREE	1
PINE SP	PINUS SP.	PINE TREE	1
POD MAC	PODOCARPUS MACROPHYLLUS	YEW PINE	1
PRU ILI ILI	PRUNUS ILICIFOLIA SSP ILICIFOLIA	HOLLY LEAFED CHERRY	2
PRU ILI LYO	PRUNUS ILICIFOLIA SSP LYONII	CATALINA CHERRY	1
SCH TER	SCHINUS TEREBINTHIFOLIUS	BRAZILIAN PEPPER TREE	1
WAS ROB	WASHINGTONIA ROBUSTA	MEXICAN FAN PALM	8

SHRUB DEMO LEGEND

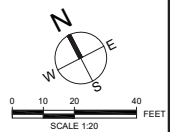
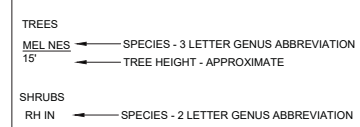
ABBREVIATION	BOTANICAL NAME	COMMON NAME	TOTAL DEMOED SITE WIDE
*DI GR	DIETES GRANDIFLORA	FORTNIGHT LILLY	±17
EL AN	ELAEAGUNUS ANGUSTIFOLIA	RUSSIAN OLIVE	3
HE AR	HETEROMELES ARBUTIFOLIA	TOYON	11
MY LA	MYOPORUM LAETUM	NO COMMON NAME	25
RH IN	RHUS INTEGRIFOLIA	LEMONADE BERRY	9
SA ME	SAMBUCUS MEXICANA	MEXICAN ELDERBERRY	1
TE CA	TECOMA CAPENSIS	CAPE HONEYSUCKLE	1
CR SP	CRASSULA SP	JADE PLANT	1

*NOTE: DIETIES TO BE DIVIDED, SALVAGED AND PROTECTED FOR REPLANTING

SYMBOLS



PLANT CALLOUT ABBREVIATIONS



ACQUISITION & DEVELOPMENT DIVISION
One Capitol Mall
Sacramento, CA
95814-3229



CALIFORNIA STATE FIRE MARSHAL APPROVED
Approval of this plan does not authorize or approve any omission or deviation from applicable regulations. Final approval is subject to field inspection. One set of approved plans shall be available on the project site at all times.
Reviewed by _____ Date _____

DPR ACCESS COMPLIANCE REVIEW
ACCESSIBILITY SECTION
CERTIFICATION # _____
Reviewed by _____ Date _____

ACCESSIBILITY COMPLIANCE AND STATE FIRE MARSHAL SEEMED ORIGINALS ARE ON FILE AT THE DEPARTMENT OF PARKS AND RECREATION, NORTHERN SERVICE CENTER.

DESIGNED: PC
DRAWN: PC
CHECKED: BP
DATE: 04/08/2019

REVISIONS	DATE

DOHENY STATE BEACH
RELINE/REPLACE SEWER LINES AND REHABILITATE LIFT STATIONS
DEMOLITION PLAN - CAMPGROUND

010942.XXX

SHEET NO.
L-1.6
XXX OF 54



A PLANTING PLAN - DAY USE AREA SCALE@22X34 1:20

SYMBOLS		PLANT CALLOUT ABBREVIATIONS	
	NEW SHRUB		TREES
	PALM TREE TO PROTECT IN PLACE	MEL NES	SPECIES - 3 LETTER GENUS ABBREVIATION
	NEW TREE	RH IN	SPECIES - 2 LETTER GENUS ABBREVIATION
	ALL OTHER TREES TO PROTECT IN PLACE		PLANT QUANTITY PLANT ABBREVIATION PLANT SYMBOL PLANT SPACING (WHERE APPLICABLE) CONTAINER SIZE

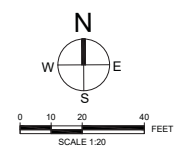
TREE PLANTING LEGEND			
ABBREVIATION	BOTANICAL NAME	COMMON NAME	QTY. (THIS SHEET)
ANA RUB	ALNUS RUBRA	RED ALDER	--
MEL DEC	MELALEUCA DECORA	FEATHER MYRTLE	--
MEL LIN	MELALEUCA LINARIFOLIA	FLAXLEAF PAPERBARK TREE	1
MEL NES	MELALEUCA NESOPIULA	PINK MELALEUCA	--
*PIN TOR	PINUS TORREYANA	TORREY PINE TREE	--
PIT TOB	PITTOSPORUM TOBIRA	TOBIRA	1
*PLA RAC	PLATANUS RACEMOSA	SYCAMORE TREE	--
*PRU ILI ILI	PRUNUS ILICIFOLIA SSP ILICIFOLIA	HOLLY LEAFED CHERRY	--
*PRU ILI LYO	PRUNUS ILICIFOLIA SSP LYONII	CATALINA CHERRY	--
SYA ROM	SYAGRUS ROMANZOFFIANA	QUEEN PALM	--
WAS ROB	WASHINGTONIA ROBUSTA	MEXICAN FAN PALM	1

SHRUB PLANTING LEGEND			
ABBREVIATION	BOTANICAL NAME	COMMON NAME	QTY. (THIS SHEET)
**DI GR	DIETIES GRANDAFLORA	FORTNIGHT LILLY	16
*BA PI	BACCHARIS PILLULARIS	COYOTE BRUSH	--
EL AN	ELAEOAGINUS ANGUSTIFOLIA	RUSSIAN OLIVE	1
*EN CA	ENCELIA CALIFORNICA	COAST SUNFLOWER	X
*HE AR	HETEROMELES ARBUTIFOLIA	TOYON	--
*RH IN	RHUS INTEGRIFOLIA	LEMONADE BERRY	--
*SA ME	SAMBUCUS MEXICANA	MEXICAN ELDERBERRY	--
*MA LA	MALOSMA LAURINA	LAUREL SUMAC	--

NOTE:
 * DENOTES A NATIVE PLANT. REFER TO SPECIFICATIONS FOR PLANT REQUIREMENTS.
 ** PLANT SALVAGED DIETIES AT 30" O.C.

- LEGEND:
- ① (N) SOD. TO MATCH EXISTING LAWN - "SANTA ANA BERMUDA"
 - ② (N) GROUND COVER TO BE REPLACED IN KIND. ALL OTHER DISTURBED AREA TO BE COVERED WITH A 2" LAYER OF BARK MULCH.
 - ③ (N) INTEGRALLY COLORED CONCRETE. FINISH TO BE MEDIUM BROOM. COLOR TO BE SOLOMON LIQUID COLOR "BUCKWHEAT" OR APPROVED EQUAL.
 - ④ DIETIES SP. PLANT SALVAGED PLANTS AT 30" ON CENTER

SEE PLANTING NOTES SHEET L-3.1



ACQUISITION & DEVELOPMENT DIVISION
 One Capitol Mall
 Sacramento, CA
 95814-3229



CALIFORNIA STATE FIRE MARSHAL APPROVED
 Approval of this plan does not authorize or approve any omission or deviation from applicable regulations. Final approval is subject to field inspection. One set of approved plans shall be available on the project site at all times.
 Reviewed by: _____ Date: _____

DPRA ACCESS COMPLIANCE REVIEW
 ACCESSIBILITY SECTION
 CERTIFICATION# _____
 Reviewed by: _____ Date: _____

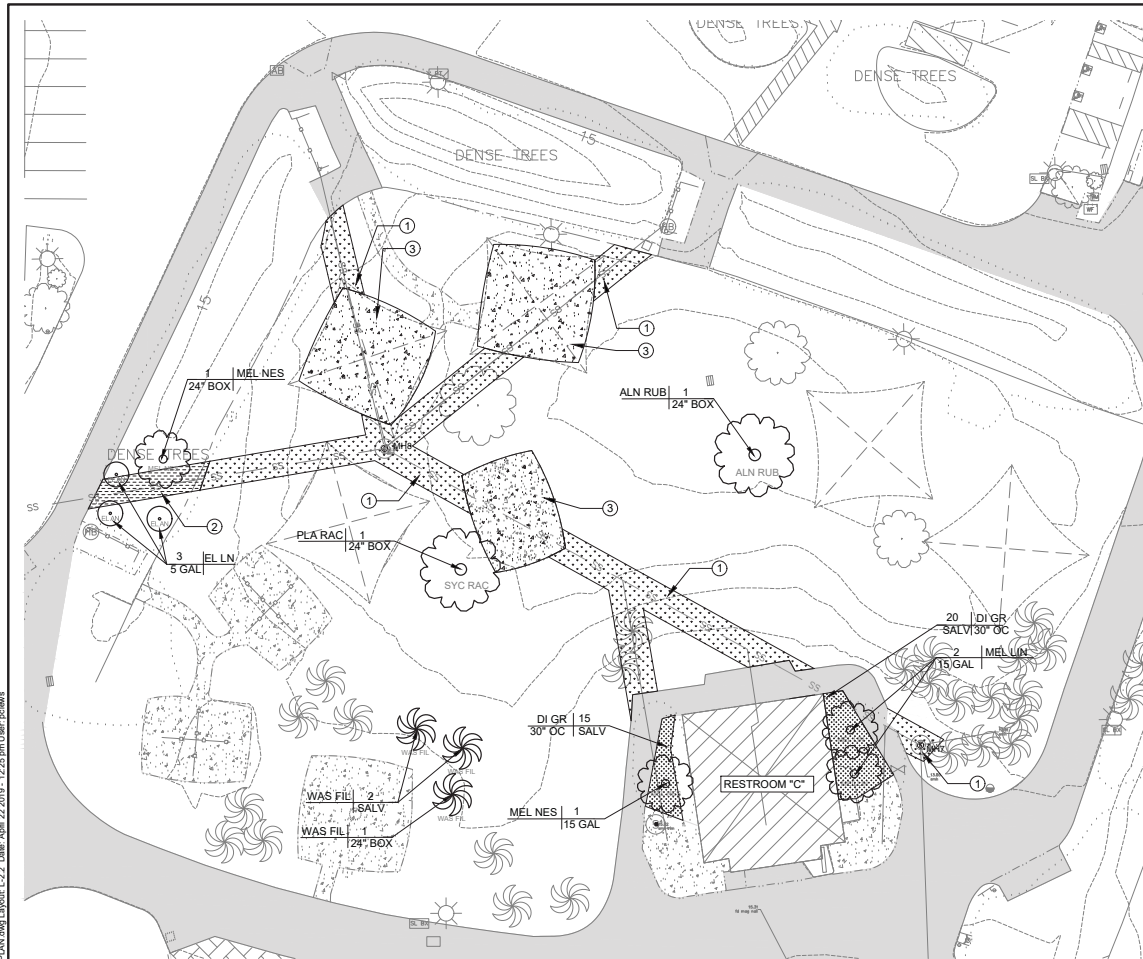
ACCESSIBILITY COMPLIANCE AND STATE FIRE MARSHAL SEENED ORIGINALS ARE ON FILE AT THE DEPARTMENT OF PARKS AND RECREATION, NORTHERN SERVICE CENTER.
 DESIGNED: PC
 DRAWN: PC
 CHECKED: BP
 DATE: 04/08/2019

REVISIONS	DATE

DOHENY STATE BEACH
 RELINE/REPLACE SEWER LINES AND REHABILITATE LIFT STATIONS
 PLANTING PLAN - DAY USE AREA

010942.XXX
 SHEET NO.
L-2.1
 XXX OF 54

File: L:\19-sad-cood\2210-johnny-410\reline_sewer\Design\LAND_ARCH\PLANTING PLAN\day use Layout_L-2.1 Date: April 22 2019 - 12:24 pm User: pcwms



A PLANTING PLAN - DAY USE AREA

SCALE@22X34 1:20

SYMBOLS		PLANT CALLOUT ABBREVIATIONS	
		TREES	
		MEL NES ← SPECIES - 3 LETTER GENUS ABBREVIATION	PLANT QUANTITY
		RH IN ← SPECIES - 2 LETTER GENUS ABBREVIATION	PLANT ABBREVIATION
			PLANT SYMBOL
			PLANT SPACING (WHERE APPLICABLE)
			CONTAINER SIZE

TREE PLANTING LEGEND

ABBREVIATION	BOTANICAL NAME	COMMON NAME	QTY. (THIS SHEET)
ANA RUB	ALNUS RUBRA	RED ALDER	1
MEL DEC	MELALEUCA DECORA	FEATHER MYRTLE	--
MEL LIN	MELALEUCA LINARIFOLIA	FLAXLEAF PAPERBARK TREE	2
MEL NES	MELALEUCA NESOPUILA	PINK MELALEUCA	2
*PIN TOR	PINUS TORREYANA	TORREY PINE TREE	--
PIT TOB	PITTOSPORUM TOBIRA	TOBIRA	--
*PLA RAC	PLATANUS RACEMOSA	SYCAMORE TREE	1
*PRU ILI ILI	PRUNUS ILICIFOLIA SSP ILICIFOLIA	HOLLY LEAFED CHERRY	--
*PRU ILI LYO	PRUNUS ILICIFOLIA SSP LYONII	CATALINA CHERRY	--
SYA ROM	SYAGRUS ROMANZOFFIANA	QUEEN PALM	--
WAS ROB	WASHINGTONIA ROBUSTA	MEXICAN FAN PALM	1 2

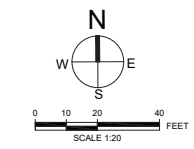
SHRUB PLANTING LEGEND

ABBREVIATION	BOTANICAL NAME	COMMON NAME	QTY. (THIS SHEET)
**DI GR	DIETIES GRANDAFLORA	FORTNIGHT LILLY	35
*BA PI	BACCHARIS PILLULARIS	COYOTE BRUSH	--
EL AN	ELAEAGINUS ANGUSTIFOLIA	RUSSIAN OLIVE	3
*EN CA	ENCELIA CALIFORNICA	COAST SUNFLOWER	--
*HE AR	HETEROMELES ARBUTIFOLIA	TOYON	--
*RH IN	RHUS INTEGRIFOLIA	LEMONADE BERRY	--
*SA ME	SAMBUCUS MEXICANA	MEXICAN ELDERBERRY	--
*MA LA	MALOSMA LAURINA	LAUREL SUMAC	--

NOTE:
 * DENOTES A NATIVE PLANT. REFER TO SPECIFICATIONS FOR PLANT REQUIREMENTS.
 ** PLANT SALVAGED DIETIES AT 30" O.C.

- LEGEND:**
- ① (N) SOD. TO MATCH EXISTING LAWN - "SANTA ANA BERMUDA"
 - ② (N) GROUND COVER TO BE REPLACED IN KIND. ALL OTHER DISTURBED AREA TO BE COVERED WITH A 2" LAYER OF BARK MULCH.
 - ③ (N) INTEGRALLY COLORED CONCRETE. FINISH TO BE MEDIUM BROOM. COLOR TO BE SOLOMON LIQUID COLOR "BUCKWHEAT" OR APPROVED EQUAL.
 - ④ DIETIES SP. PLANT SALVAGED PLANTS AT 30" ON CENTER

SEE PLANTING NOTES SHEET L-3.1



ACQUISITION & DEVELOPMENT DIVISION
 One Capitol Mall
 Sacramento, CA
 95814-3229



CALIFORNIA STATE FIRE MARSHAL APPROVED
 Approval of this plan does not authorize or approve any omission of deviation from applicable regulations. Final approval is subject to field inspection. One set of approved plans shall be available on the project site at all times.
 Reviewed by: _____ Date: _____

DPRA ACCESS COMPLIANCE REVIEW
 ACCESSIBILITY SECTION
 CERTIFICATION # _____
 Reviewed by: _____ Date: _____

ACCESSIBILITY COMPLIANCE AND STATE FIRE MARSHAL SIGNED ORIGINALS ARE ON FILE AT THE DEPARTMENT OF PARKS AND RECREATION, MODERN SERVICE CENTER.

DESIGNED: PC
 DRAWN: PC
 CHECKED: BP
 DATE: 04/08/2019

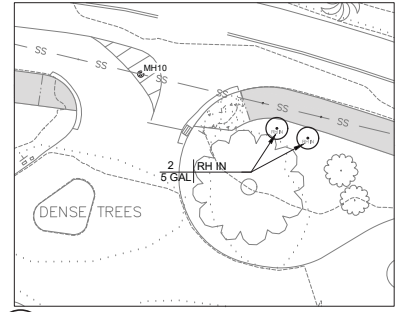
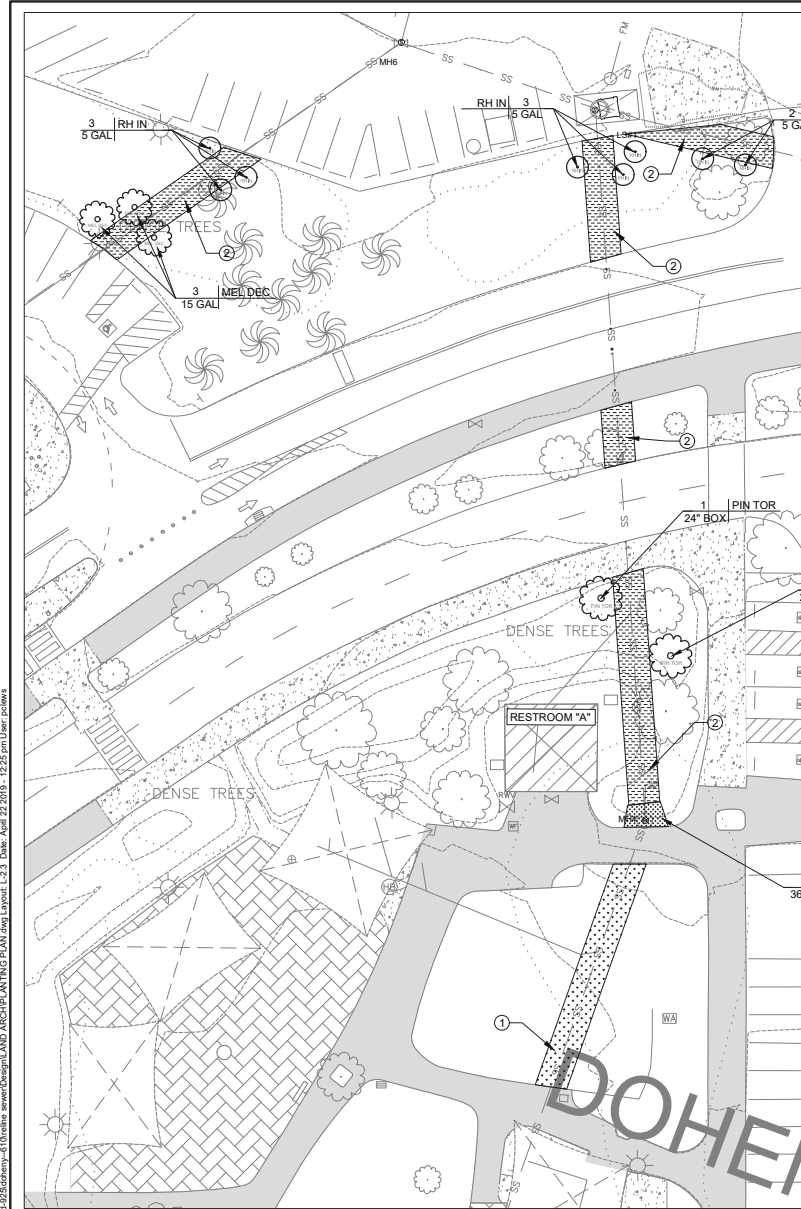
REVISIONS	DATE

DOHENY STATE BEACH
 RELINE/REPLACE SEWER LINES AND REHABILITATE LIFT STATIONS
 PLANTING PLAN - DAY USE AREA

010942.XXX

SHEET NO.
L-2.2
 XXX OF 54

File: L:\19-sad-cood\22\shmy-410\reline_sewer\Design\LAND_ARCH\PLANTING PLAN.dwg Layout: L-2.2 Date: April 22 2019 - 12:25 pm User: pcwms



B PLANTING PLAN - DAY USE AREA
SCALE@22X34 1:20

A PLANTING PLAN - DAY USE AREA
SCALE@22X34 1:20

SYMBOLS

- NEW SHRUB
- NEW TREE
- PALM TREE TO PROTECT IN PLACE
- ALL OTHER TREES TO PROTECT IN PLACE

PLANT CALLOUT ABBREVIATIONS

TREES

- MEL NES ← SPECIES - 3 LETTER GENUS ABBREVIATION

SHRUBS

- RH IN ← SPECIES - 2 LETTER GENUS ABBREVIATION

LEGEND:

- ① (N) SOD. TO MATCH EXISTING LAWN - "SANTA ANA BERMUDA"
- ② (N) GROUND COVER TO BE REPLACED IN KIND. ALL OTHER DISTURBED AREA TO BE COVERED WITH A 2" LAYER OF BARK MULCH.
- ③ (N) INTEGRALLY COLORED CONCRETE. FINISH TO BE MEDIUM BROOM. COLOR TO BE SOLOMON LIQUID COLOR "BUCKWHEAT" OR APPROVED EQUAL.
- ④ DIETIES SP. PLANT SALVAGED PLANTS AT 30" ON CENTER

SEE PLANTING NOTES SHEET L-3.1

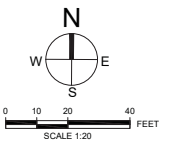
PLANT CALLOUT ABBREVIATIONS

- PLANT QUANTITY
- PLANT ABBREVIATION
- PLANT SYMBOL
- PLANT SPACING (WHERE APPLICABLE)
- CONTAINER SIZE

TREE PLANTING LEGEND			
ABBREVIATION	BOTANICAL NAME	COMMON NAME	QTY. (THIS SHEET)
ANA RUB	ALNUS RUBRA	RED ALDER	--
MEL DEC	MELALEUCA DECORA	FEATHER MYRTLE	3
MEL LIN	MELALEUCA LINARIFOLIA	FLAXLEAF PAPERBARK TREE	--
MEL NES	MELALEUCA NESOPUILA	PINK MELALEUCA	--
*PIN TOR	PINUS TORREYANA	TORREY PINE TREE	2
PIT TOB	PITTOSPORUM TOBIRA	TOBIRA	--
*PLA RAC	PLATANUS RACEMOSA	SYCAMORE TREE	--
*PRU ILI ILI	PRUNUS ILICIFOLIA SSP ILICIFOLIA	HOLLY LEAFED CHERRY	--
*PRU ILI LYO	PRUNUS ILICIFOLIA SSP LYONII	CATALINA CHERRY	--
SYA ROM	SYAGRUS ROMANZOFFIANA	QUEEN PALM	--
WAS ROB	WASHINGTONIA ROBUSTA	MEXICAN FAN PALM	--

SHRUB PLANTING LEGEND			
ABBREVIATION	BOTANICAL NAME	COMMON NAME	QTY. (THIS SHEET)
**DI GR	DIETIES GRANDAFLORA	FORTNIGHT LILLY	--
*BA PI	BACCHARIS PILULARIS	COYOTE BRUSH	--
EL AN	ELAEAGUNUS ANGUSTIFOLIA	RUSSIAN OLIVE	--
*EN CA	ENCELIA CALIFORNICA	COAST SUNFLOWER	--
*HE AR	HETEROMELES ARBUTIFOLIA	TOYON	--
*RH IN	RHUS INTEGRIFOLIA	LEMONADE BERRY	10
*SA ME	SAMBUCUS MEXICANA	MEXICAN ELDERBERRY	--
*MA LA	MALOSMA LAURINA	LAUREL SUMAC	--

NOTE:
* DENOTES A NATIVE PLANT. REFER TO SPECIFICATIONS FOR PLANT REQUIREMENTS.
** PLANT SALVAGED DIETIES AT 30" O.C.



ACQUISITION & DEVELOPMENT DIVISION
One Capitol Mall
Sacramento, CA
95814-3229



CALIFORNIA STATE FIRE MARSHAL APPROVED
Approval of this plan does not authorize or approve any omission of deviation from applicable regulations. Final approval is subject to field inspection. One set of approved plans shall be available on the project site at all times.
Reviewed by: _____ Date: _____

DPRA ACCESS COMPLIANCE REVIEW
ACCESSIBILITY SECTION
CERTIFICATION# _____
Reviewed by: _____ Date: _____

DESIGNED: PC
DRAWN: PC
CHECKED: BP
DATE: 04/08/2019

REVISIONS	DATE

DOHENY STATE BEACH
RELINE/REPLACE SEWER LINES AND REHABILITATE LIFT STATIONS
PLANTING PLAN - DAY USE AREA

010942.XXX
SHEET NO.
L-2.3
XXX OF 54

File: L:\19-sad-cood\2203\shmy-4\0\sheet_sawed\Design\LAND_ARCH\PLANTING PLAN.dwg Layout: L-2.3 Date: April 22 2019 - 12:25 pm User: pcwms



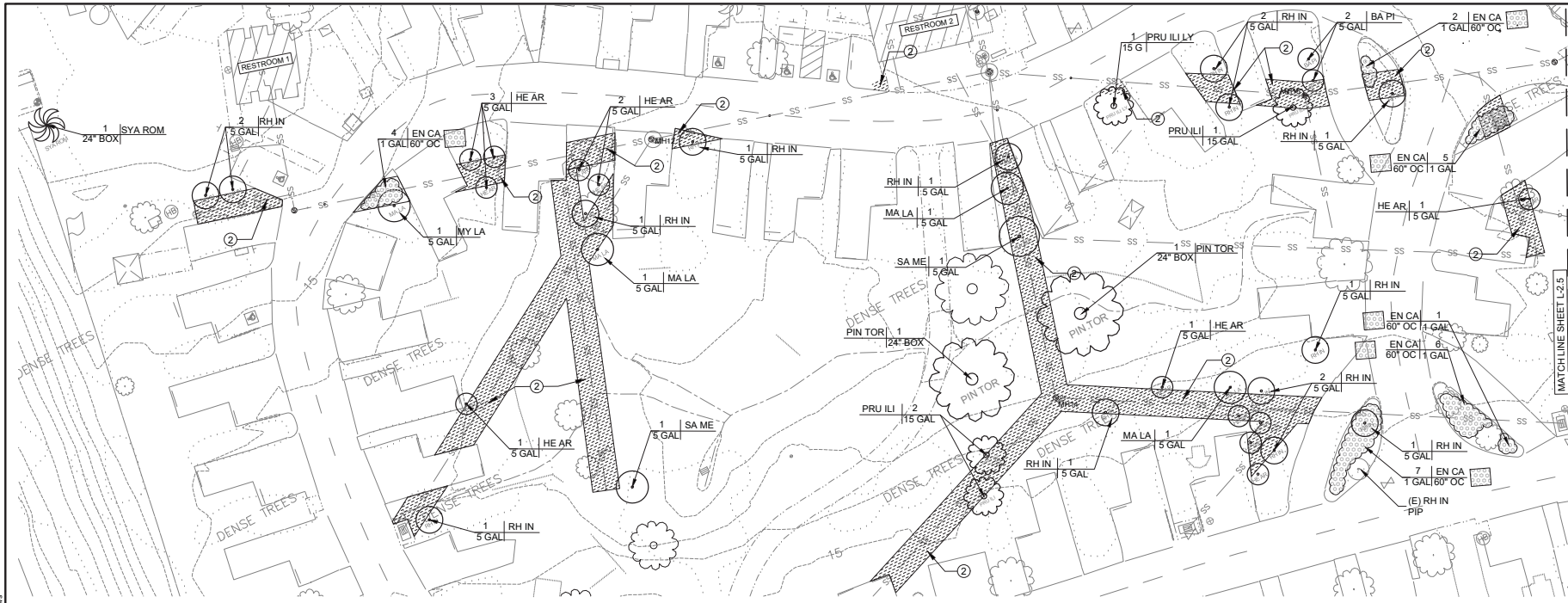
ACQUISITION & DEVELOPMENT DIVISION
One Capitol Mall
Sacramento, CA
95814-3229



CALIFORNIA STATE FIRE MARSHAL - APPROVED
Approval of this plan does not authorize or approve any omission or deviation from applicable regulations. Final approval is subject to field inspection. One set of approved plans shall be available on the project site at all times.
Reviewed by: _____ Date: _____
DPR ACCESS COMPLIANCE REVIEW
CERTIFICATION SECTION
CERTIFICATION # _____
Reviewed by: _____ Date: _____
ACCESSIBILITY COMPLIANCE AND STATE FIRE MARSHAL SIGNED ORIGINALS ARE ON FILE AT THE DEPARTMENT OF PARKS AND RECREATION, MODERN SERVICE CENTER.

DESIGNED: PC
DRAWN: PC
CHECKED: BP
DATE: 04/08/2019

REVISIONS	DATE

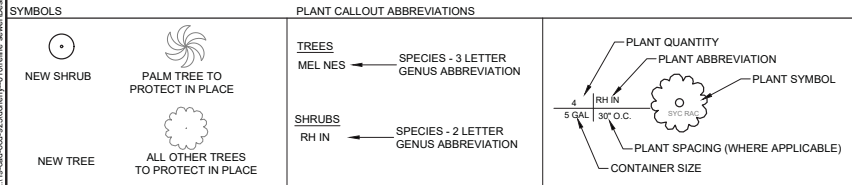
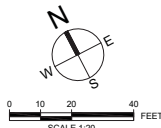


A PLANTING PLAN - CAMPGROUND

SCALE@22X34 1:20

- LEGEND:**
- ① (N) SOD. TO MATCH EXISTING LAWN - "SANTA ANA BERMUDA"
 - ② (N) GROUND COVER TO BE REPLACED IN KIND. ALL OTHER DISTURBED AREA TO BE COVERED WITH A 2" LAYER OF BARK MULCH.
 - ③ (N) INTEGRALLY COLORED CONCRETE. FINISH TO BE MEDIUM BROOM. COLOR TO BE SOLOMON LIQUID COLOR "BUCKWHEAT" OR APPROVED EQUAL.
 - ④ DIETIES SP. PLANT SALVAGED PLANTS AT 30" ON CENTER

SEE PLANTING NOTES SHEET L-3.1



TREE PLANTING LEGEND				SHRUB PLANTING LEGEND			
ABBREVIATION	BOTANICAL NAME	COMMON NAME	QTY. (THIS SHEET)	ABBREVIATION	BOTANICAL NAME	COMMON NAME	QTY. (THIS SHEET)
ANA RUB	ALNUS RUBRA	RED ALDER	--	**DI GR	DIETIES GRANDAFLORA	FORTNIGHT LILLY	--
MEL DEC	MELALEUCA DECORA	FEATHER MYRTLE	--	*BA PI	BACCHARIS PILULARIS	COYOTE BRUSH	2
MEL LIN	MELALEUCA LINARIFOLIA	FLAXLEAF PAPERBARK TREE	--	EL AN	ELAEAGINUS ANGUSTIFOLIA	RUSSIAN OLIVE	--
MEL NES	MELALEUCA NESOPUILA	PINK MELALEUCA	--	*EN CA	ENCELIA CALIFORNICA	COAST SUNFLOWER	X
*PIN TOR	PINUS TORREYANA	TORREY PINE TREE	2	*HE AR	HETEROMELES ARBUTIFOLIA	TOYON	26
PIT TOB	PITTIOSPORUM TOBIRA	TOBIRA	--	*RH IN	RHUS INTEGRIFOLIA	LEMONADE BERRY	14
*PLA RAC	PLATANUS RACEMOSA	SYCAMORE TREE	--	*SA ME	SAMBUCUS MEXICANA	MEXICAN ELDERBERRY	1
*PRU ILI ILI	PRUNUS ILICIFOLIA SSP ILICIFOLIA	HOLLY LEAFED CHERRY	3	*MA LA	MALOSMA LAURINA	LAUREL SUMAC	4
*PRU ILI LYO	PRUNUS ILICIFOLIA SSP LYONII	CATALINA CHERRY	1				
SYA ROM	SYAGRUS ROMANZOFFIANA	QUEEN PALM	1				
WAS ROB	WASHINGTONIA ROBUSTA	MEXICAN FAN PALM	--				

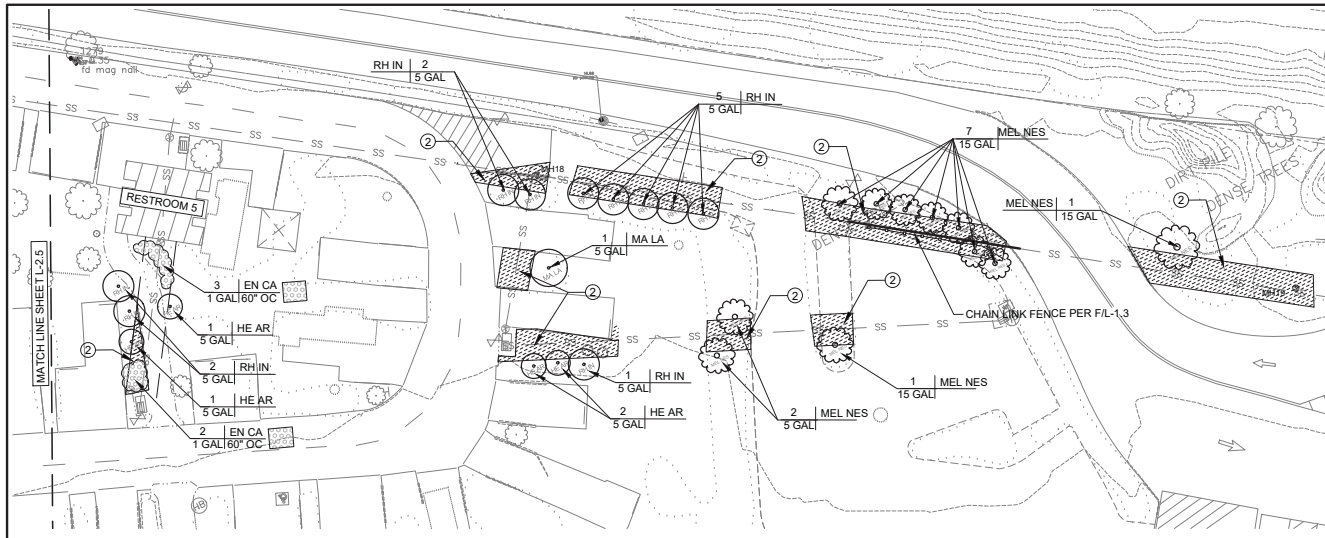
NOTE:
* DENOTES A NATIVE PLANT. REFER TO SPECIFICATIONS FOR PLANT REQUIREMENTS.
** PLANT SALVAGED DIETIES AT 30" O.C.

DOHERY STATE BEACH
RELINE/REPLACE SEWER LINES AND REHABILITATE LIFT STATIONS
PLANTING PLAN - CAMPGROUND

010942.XXX

SHEET NO.
L-2.4
XXX OF 54

File: L:\19-sad-cod-923\shmy-410\wta-arw\Design\LAND_ARCH\PLANTING PLAN.dwg Layout: L-2.4 Date: April 22 2019 - 12:26 pm User: pchew



SEE PLANTING NOTES SHEET L-3.1

- LEGEND:**
- ① (N) SOD. TO MATCH EXISTING LAWN - "SANTA ANA BERMUDA"
 - ② (N) GROUND COVER TO BE REPLACED IN KIND. ALL OTHER DISTURBED AREA TO BE COVERED WITH A 2" LAYER OF BARK MULCH.
 - ③ (N) INTEGRALLY COLORED CONCRETE. FINISH TO BE MEDIUM BROOM.. COLOR TO BE SOLOMON LIQUID COLOR "BUCKWHEAT" OR APPROVED EQUAL.
 - ④ DIETIES SP. PLANT SALVAGED PLANTS AT 30" ON CENTER

A PLANTING PLAN - CAMPGROUND

SCALE@22X34 1:20

SYMBOLS

- NEW SHRUB
- NEW TREE
- PALM TREE TO PROTECT IN PLACE
- ALL OTHER TREES TO PROTECT IN PLACE

PLANT CALLOUT ABBREVIATIONS

TREES

MEL NES ← SPECIES - 3 LETTER GENUS ABBREVIATION

SHRUBS

RH IN ← SPECIES - 2 LETTER GENUS ABBREVIATION

PLANT CALLOUT ABBREVIATION

PLANT QUANTITY

PLANT ABBREVIATION

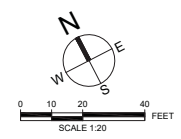
PLANT SYMBOL

PLANT SPACING (WHERE APPLICABLE)

CONTAINER SIZE

TREE PLANTING LEGEND				SHRUB PLANTING LEGEND			
ABBREVIATION	BOTANICAL NAME	COMMON NAME	QTY. (THIS SHEET)	ABBREVIATION	BOTANICAL NAME	COMMON NAME	QTY. (THIS SHEET)
ANA RUB	ALNUS RUBRA	RED ALDER	--	**DI GR	DIETIES GRANDAFLORA	FORTNIGHT LILLY	--
MEL DEC	MELALEUCA DECORA	FEATHER MYRTLE	--	*BA PI	BACCHARIS PILLULARIS	COYOTE BRUSH	--
MEL LIN	MELALEUCA LINARIFOLIA	FLAXLEAF PAPERBARK TREE	--	EL AN	ELAEAGUNUS ANGUSTIFOLIA	RUSSIAN OLIVE	--
MEL NES	MELALEUCA NESOPUIA	PINK MELALEUCA	11	*EN CA	ENCELIA CALIFORNICA	COAST SUNFLOWER	5
*PIN TOR	PINUS TORREYANA	TORREY PINE TREE	--	*HE AR	HETEROMELES ARBUTIFOLIA	TOYON	4
PIT TOB	PITTOSPORUM TOBIRA.	TOBIRA	--	*RH IN	RHUS INTEGRIFOLIA	LEMONADE BERRY	10
*PLA RAC	PLATANUS RACEMOSA	SYCAMORE TREE	--	*SA ME	SAMBUCUS MEXICANA	MEXICAN ELDERBERRY	--
*PRU ILI ILI	PRUNUS ILICIFOLIA SSP ILICIFOLIA	HOLLY LEAFED CHERRY	--	*MA LA	MALOSMA LAURINA	LAUREL SUMAC	1
*PRU ILI LYO	PRUNUS ILICIFOLIA SSP LYONII	CATALINA CHERRY	--				
SYA ROM	SYAGRUS ROMANZOFFIANA	QUEEN PALM	--				
WAS ROB	WASHINGTONIA ROBUSTA	MEXICAN FAN PALM	--				

NOTE:
 * DENOTES A NATIVE PLANT. REFER TO SPECIFICATIONS FOR PLANT REQUIREMENTS.
 ** PLANT SALVAGED DIETIES AT 30" O.C.



ACQUISITION & DEVELOPMENT DIVISION
 One Capitol Mall
 Sacramento, CA
 95814-3229



CALIFORNIA STATE FIRE MARSHAL APPROVED
 Approval of this plan does not authorize or approve any omission of deviation from applicable regulations. Final approval is subject to field inspection. One set of approved plans shall be available on the project site at all times.

Reviewed by _____ Date _____

DPR ACCESS COMPLIANCE REVIEW
 ACCESSIBILITY SECTION
 CERTIFICATION # _____

Reviewed by _____ Date _____

ACCESSIBILITY COMPLIANCE AND STATE FIRE MARSHAL SIGNED ORIGINALS ON FILE AT THE DEPARTMENT OF PARKS AND RECREATION, NORTHERN SERVICE CENTER.

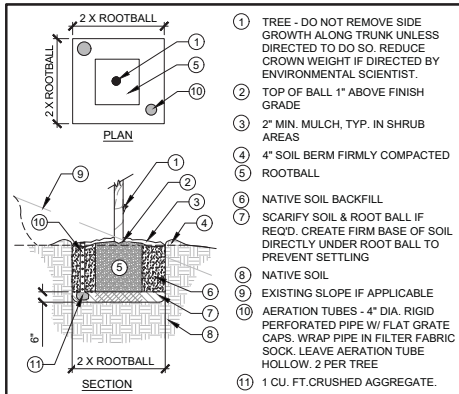
DESIGNED:	PC
DRAWN:	PC
CHECKED:	BP
DATE:	04/08/2019

REVISIONS	DATE

DOHENY STATE BEACH
 RELINE/REPLACE SEWER LINES AND REHABILITATE LIFT STATIONS
PLANTING PLAN - CAMPGROUND

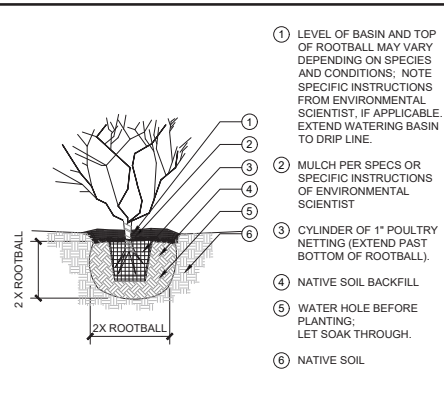
010942.XXX

SHEET NO.
L-2.6
 XXX OF 54



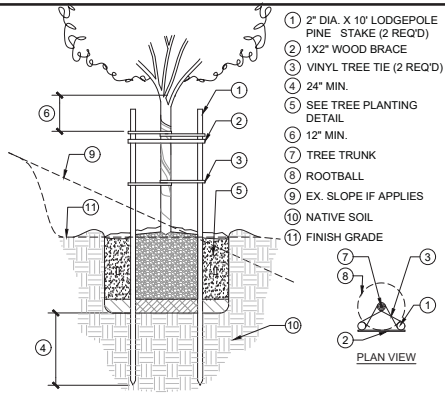
- 1 TREE - DO NOT REMOVE SIDE GROWTH ALONG TRUNK UNLESS DIRECTED TO DO SO. REDUCE CROWN WEIGHT IF DIRECTED BY ENVIRONMENTAL SCIENTIST.
- 2 TOP OF BALL 1" ABOVE FINISH GRADE
- 3 2" MIN. MULCH, TYP. IN SHRUB AREAS
- 4 4" SOIL BERM FIRMLY COMPACTED
- 5 ROOTBALL
- 6 NATIVE SOIL BACKFILL
- 7 SCARIFY SOIL & ROOT BALL IF REQ'D. CREATE FIRM BASE OF SOIL DIRECTLY UNDER ROOT BALL TO PREVENT SETTLING
- 8 NATIVE SOIL
- 9 EXISTING SLOPE IF APPLICABLE
- 10 AERATION TUBES - 4" DIA. RIGID PERFORATED PIPE W/ FLAT GRATE CAPS. WRAP PIPE IN FILTER FABRIC SOCK. LEAVE AERATION TUBE HOLLOW. 2 PER TREE
- 11 1 CU. FT. CRUSHED AGGREGATE.

A TREE AND SHRUB PLANTING SCALE @ 22x34 3/8" = 1' 0"



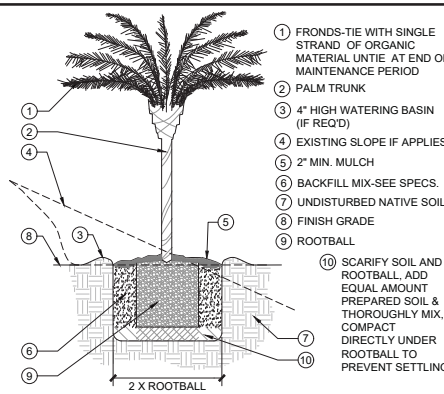
- 1 LEVEL OF BASIN AND TOP OF ROOTBALL MAY VARY DEPENDING ON SPECIES AND CONDITIONS; NOTE SPECIFIC INSTRUCTIONS FROM ENVIRONMENTAL SCIENTIST. IF APPLICABLE, EXTEND WATERING BASIN TO DRIP LINE.
- 2 MULCH PER SPECS OR SPECIFIC INSTRUCTIONS OF ENVIRONMENTAL SCIENTIST
- 3 CYLINDER OF 1" POULTRY NETTING (EXTEND PAST BOTTOM OF ROOTBALL).
- 4 NATIVE SOIL BACKFILL
- 5 WATER HOLE BEFORE PLANTING; LET SOAK THROUGH.
- 6 NATIVE SOIL

B NATIVE SHRUB PLANTING SCALE @ 22x34 1/2" = 1' 0"



- 1 2" DIA. X 10' LODGEPOLE PINE STAKE (2 REQ'D)
- 2 1X2" WOOD BRACE
- 3 VINYL TREE TIE (2 REQ'D)
- 4 24" MIN.
- 5 SEE TREE PLANTING DETAIL
- 6 12" MIN.
- 7 TREE TRUNK
- 8 ROOTBALL
- 9 EX. SLOPE IF APPLIES
- 10 NATIVE SOIL
- 11 FINISH GRADE

C DOUBLE STAKE SCALE @ 22x34 N.T.S.



- 1 FRONDS-TIE WITH SINGLE STRAND OF ORGANIC MATERIAL UNTIE AT END OF MAINTENANCE PERIOD
- 2 PALM TRUNK
- 3 4" HIGH WATERING BASIN (IF REQ'D)
- 4 EXISTING SLOPE IF APPLIES
- 5 2" MIN. MULCH
- 6 BACKFILL MIX-SEE SPECS.
- 7 UNDISTURBED NATIVE SOIL
- 8 FINISH GRADE
- 9 ROOTBALL
- 10 SCARIFY SOIL AND ROOTBALL, ADD EQUAL AMOUNT PREPARED SOIL & THOROUGHLY MIX, COMPACT DIRECTLY UNDER ROOTBALL TO PREVENT SETTLING.

D PALM TREE PLANTING SCALE @ 22x34 N.T.S.

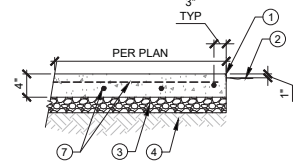
TREE PLANTING LEGEND					
ABBREVIATION	BOTANICAL NAME	COMMON NAME	SIZE	QTY. (TOTAL PROJECT)	DETAIL
ANA RUB	ALNUS RUBRA	RED ALDER	24" BOX	1	L-3.1/A, D
MEL DEC	MELALEUCA DECORA	FEATHER MYRTLE	15 GAL	3	L-3.1/A
MEL LIN	MELALEUCA LINARIFOLIA	FLAXLEAF PAPERBARK TREE	15 GAL	3	L-3.1/A
MEL NES	MELALEUCA NESOPUILA	PINK MELALEUCA	15 GAL	16	L-3.1/A
"PIN TOR	PINUS TORREYANA	TORREY PINE TREE	24" BOX	6	L-1.3/A, C
PIT TOB	PITTOSPORUM TOBIRA.	TOBIRA	15 GAL	1	L-3.1/A
"PLA RAC	PLATANUS RACEMOSA	SYCAMORE TREE	24" BOX	1	L-1.3/A, C
"PRU ILI ILI	PRUNUS ILICIFOLIA SSP ILICIFOLIA	HOLLY LEAFED CHERRY	15 GAL	4	L-3.1/A, B
"PRU ILI LYO	PRUNUS ILICIFOLIA SSP LYONII	CATALINA CHERRY	15 GAL	1	L-1.3/A, B
SYA ROM	SYAGRUS ROMANZOFFIANA	QUEEN PALM	24" BOX	1	L-1.3/A
WAS ROB	WASHINGTONIA ROBUSTA	MEXICAN FAN PALM	24" BOX	4	L-1.3/D

SHRUB PLANTING LEGEND					
ABBREVIATION	BOTANICAL NAME	COMMON NAME	SIZE	QTY. (PROJECT TOTAL)	DETAIL
8"DI GR	DIETIES GRANDAFLORA	FORTNIGHT LILLY	SALV	...	L-3.1/A
"BA PI	BACCHARIS PILULARIS	COYOTE BRUSH	5 GAL	2	L-3.1/A, B
EL AN	ELAEAGUNUS ANGUSTIFOLIA	RUSSIAN OLIVE	5 GAL	4	L-3.1/A
"HE AR	HETEROMELES ARBUTIFOLIA	TOYON	5 GAL	19	L-1.3/A, B
"RH IN	RHUS INTEGRIFOLIA	LEMONADE BERRY	5 GAL	35	L-1.3/A
"SA ME	SAMBUCUS MEXICANA	MEXICAN ELDERBERRY	15 GAL	1	L-1.3/A, B
"MA LA	MALOSMA LAURINA	LAUREL SUMAC	5 GAL	7	L-1.3/A, B

NOTE:
 * DENOTES A NATIVE PLANT. REFER TO SPECIFICATIONS FOR PLANT REQUIREMENTS.
 ** PLANT SALVAGED DIETIES AT 30" O.C.

- PLANTING NOTES:**
1. THE CONTRACTOR SHALL SUPPLY AND PLANT ALL PLANT MATERIALS INDICATED ON PLANT LIST.
 2. PROVIDE PLANT MATERIALS MATCHING THE NATIVE GENUS, SPECIES, AND SUBSPECIES AS INDICATED.
 3. CONTRACTOR SHALL PLACE SPECIFIED PLANTS IN AREAS INDICATED ON PLAN. STATE REPRESENTATIVE WILL DETERMINE EXACT LOCATIONS OF INDIVIDUAL PLANTS IN THE FIELD PRIOR TO INSTALLATION.
 4. SEE SPECIFICATIONS, INCLUDING SUPPLEMENTAL CONDITIONS, FOR PLANTING REQUIREMENTS, MATERIALS, AND EXECUTION, INCLUDING PLANT TAGGING AND APPROVAL BY STATE REPRESENTATIVE.
 5. CONTRACTOR SHALL BE RESPONSIBLE FOR VERIFYING ALL PLANT COUNTS.
 6. PROVIDE A 3" LAYER OF APPROVED MULCH IN ALL PLANTING BASINS OR PLANTING AREAS. ALL AREAS EXPOSED FROM CONSTRUCTION SHALL BE COVERED WITH A 3" LAYER OF BARK MULCH.
 7. PRUNE NEWLY PLANTED TREES "ONLY" AS DIRECTED BY STATE REPRESENTATIVE OR ENVIRONMENTAL SCIENTIST.
 8. PROTECT ALL EXISTING PLANT MATERIAL ON SITE, WHETHER OR NOT SHOWN ON PLANS, UNLESS OTHERWISE DIRECTED ON PLANS OR BY STATE REPRESENTATIVE. VERIFY ALL PLANT REMOVALS WITH STATE REPRESENTATIVE. INSTALL PLANT PROTECTION MEASURES NOTED IN PLANTING DETAILS AND SPECIFICATIONS. IF DIRECTED BY STATE REPRESENTATIVE OR ENVIRONMENTAL SCIENTIST, INSTALL ADDITIONAL 1" POULTRY NETTING BELOW GRADE AS SHOWN ON PLANTING DETAILS, EXTENDING PAST THE BOTTOM OF THE ROOTBALL.
 9. PLANT MATERIALS TO BE REMOVED SHALL BE FLAGGED ON SITE BY STATE REPRESENTATIVE OR ENVIRONMENTAL SCIENTIST PRIOR TO CLEARING OPERATIONS. THEY ARE LIMITED TO THE FOLLOWING: SPECIFIED LIMBS AND/OR TRUNKS OF NATIVE SPECIES AND NON-NATIVE OR EXOTIC SPECIES DEEMED UNDESIRABLE. IN ADDITION, ONE OR MORE GROW-AND-KILL CYCLES MAY APPLY. SEE PLANTING AND CLEARING AND DEMOLITION SPECIFICATIONS FOR ADDITIONAL INFORMATION.

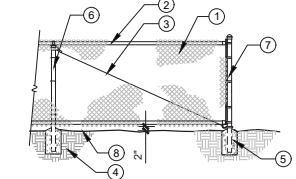
- KEYNOTES:**
- 1 1/2" RADIUS
 - 2 FINISH GRADE
 - 3 6" CLASS 2 AB COMPACTED TO 95% TYP.
 - 4 SUBGRADE PER CIVIL
 - 5 #3 REBAR SPACED 18" O.C. EACH WAY
 - 6 CONCRETE - SEE SPECS



- NOTE:
 1. INTEGRAL COLOR TO BE SOLOMON LIQUID COLOR "BUCKWHEAT" OR APPROVED EQUAL.
 2. CONCRETE FINISH TO BE MEDIUM BROOM.

E CONCRETE SCALE @ 22x34 3/4"=1'-0"

- 1 CHAIN LINK FABRIC
 - 2 1 1/2" DIA. BRACE
 - 3 3/8" STEEL TRUSS ROD
 - 4 NATIVE SOIL
 - 5 POST EMBEDMENT: LINE POSTS = 18" CORNER/END POSTS = 24"
 - 6 1 1/2" DIA. LINE POST
 - 7 2" DIA. END/CORNER POST
 - 8 FINISH GRADE
- NOTE:
 1. FOR SPANS BETWEEN POSTS LESS THAN 18" TIE FABRIC TO POST
 2. FILL CLEAR AREAS OF GREATER THAN 3" WITH FABRIC
 3. ALL FENCING FABRIC SHALL BE 9 GAGE GALV. CHAIN LINK 2" MESH.
 4. ALL FENCING MATERIALS TO BE HOT DIPPED GALVANIZED TYP.
 5. USE GREEN VINYL-COATED FENCING MATERIALS.
 6. INSERT GREEN PRIVACY SLATS.



F CHAIN LINK FENCE SCALE @ 22x34 1/4"=1'-0"



REVISIONS	DATE

DOHENY STATE BEACH
 RELINE/REPLACE SEWER LINES AND REHABILITATE LIFT STATIONS
 PLANTING DETAILS

010942.XXX
 SHEET NO.
L-3.1
 XXX OF 54

File: L:\19-sad-cood\2219\shrinky-4\0\revise_sawed\Design\LAND_ARCH\PLANTING DETAILS.dwg Layout: L3.1 Date: April 22, 2019 - 12:26 pm User: pdawson



PROJECT AVOIDANCE AND MINIMIZATION MEASURES

PROJECT TITLE: Replace Connection to City Sewer and Replace Pipe System

PARK UNIT: Doheny State Beach

DISTRICT: Orange Coast

This project is approved to proceed with the following measures incorporated and/or comments considered:

Biological Resource Comments/Measures

1. Trees that must be removed to complete the project shall be replaced in-kind or a suitable substitute as determined by coordinating with California State Parks environmental scientists, maintenance staff and operations staff. See project plans for specific locations of tree impacts.
2. Project activities shall remain in the existing disturbed footprint of the road, campsites, etc. as much as possible to avoid impacts to Natural Resources, including landscape vegetation.
3. If any grading or other changes to the ground become necessary, implementation will be such that all flows are directed inland, toward storm drains, etc. to avoid discharging to San Juan Creek or the Pacific Ocean.
4. Any disturbance within the tree protection zone (5x DBH) may require hand digging if roots greater than 2" in diameter are encountered.
5. If roots less than 2 inches in diameter are encountered, then they will be cut cleanly (using clean tools to prevent spread of disease) prior to proceeding. If roots are damaged by equipment or other means, then a clean cut will be made to remove the wounded area to minimize damage to the tree.
6. Roots 2-5 inches in diameter should be avoided through threading of line or other options, but may be cut cleanly at the discretion of the Natural Resources Specialist based upon information from an Arborist (preferably).
7. Roots greater than 5 inches in diameter will be avoided and re-covered with damp soil as soon as possible. If avoidance is not possible, then the root may only be cut if an Arborist determines that cutting will have less than a 75% chance of causing mortality to the tree.
8. Construction should be conducted outside of the bird breeding season. If work must proceed during bird breeding season (February 15 to September 1), and generated noise will be greater than ambient, then a breeding bird survey must be completed by a qualified ecologist no more than 7 calendar day prior. If an active nest is found, then activities that may cause nest failure, as determined by the Project Natural Resources Specialist, may not commence until the young have fledged or the nest has failed. A Natural Resources Monitor may be onsite during project activities.
9. Measures must be in place to ensure that no material is discharged to San Juan Creek or the Pacific Ocean. This may include silt fencing, fiber rolls, etc. San Juan Creek is recognized as steelhead critical habitat and has historically supported tidewater goby. While the goby population is extirpated (CNDDDB record search September 26, 2018) and steelhead are not currently known to be present, the water quality and other physical factors should be protected due to the ongoing presence of suitable habitat.
10. Trenches, bore holes, etc. should not be left open or unattended. They must be covered in a manner that prevents the entrapment of wildlife and the potential for human accidents.
11. If stock piles must be left overnight, standard BMPs will be used to ensure containment, such as tarping and surrounding with fiber rolls if rain is forecasted. Any residual materials from trenching or other project related activities that is not used for backfill will be removed from the site and disposed of at an appropriate facility.

12. This project is being conducted in a landscaped, developed area and no sensitive plants are expected to be present. No sensitive plants are known to be present, per Park records and CNDDDB (record search September 26, 2018).
13. Monarch butterflies have previously utilized the eucalyptus in the Park for roosting during the late fall and winter. Should project activities occur when monarch butterflies are present, then a Natural Resources Monitor may be present to survey and avoidance measures implemented, including work stoppage until the individual(s) have left of their own accord.
14. Sensitive wildlife species including coastal California gnatcatcher and least Bell's vireo have been reported within 1 mile of the project area (CNDDDB record search September 26, 2018), however no suitable habitat is present within or immediately adjacent to the project area. Therefore no additional measures are necessary regarding sensitive wildlife species.

Water Quality Protection Measures

1. Discharge to the sanitary sewer system is preferred. If discharge to the beach or creek is required, then measures must be taken to ensure there are no toxic substances being released and that the water is released in a manner that does not increase turbidity or create erosive action. San Juan Creek has historically supported tidewater goby. While the population is extirpated (CNDDDB record search June 21, 2018), the water quality and other physical factors should be protected due to the ongoing presence of suitable habitat.
2. If stock piles must be left overnight, standard BMPs will be used to ensure containment, such as tarping and surrounding with fiber rolls if rain is forecasted. Any residual materials from borings that is not used for backfill of bore holes will be removed from the site and disposed of at an appropriate facility.
3. No equipment refueling or maintenance will be performed within the project area. Any accidental spills will be immediately contained, cleaned up, and properly disposed.
4. Following completion of work, any erosion control measures that are no longer needed shall be removed and all associated materials will be transported off-site. BMPs may remain if State Parks' staff deems the measures are necessary to provide continued stabilization or minimize pollution.
5. Construction BMPs shall be implemented into plans via the contractor preparing a SWPPP to minimize runoff and water quality impacts.
6. Cut material, primarily sand, may remain onsite and spread in a location where it can provide beach nourishment without affecting existing resources.

Archaeological Resource Protection Measures

1. In order to ensure avoidance of significant impacts to archaeological resources, an archaeological monitor should be present during ground disturbing activities throughout the project area, at least initially, to evaluate subsurface conditions. Continued monitoring is at the monitor's discretion.
2. If potentially significant resources are encountered during the project, work should cease in that particular location until a State-qualified resource specialist can evaluate the find and implement appropriate measures. Avoidance is preferred.