

CALIFORNIA COASTAL COMMISSION

455 MARKET STREET, SUITE 228
SAN FRANCISCO, CA 94105-2219
VOICE (415) 904-5200
FAX (415) 904-5400



F 11a

CD-0001-20 (EPA)

September 17, 2020

EXHIBITS

Table of Contents

Exhibit 1 – Project Location Map

Exhibit 2 – Bathymetry Map of Current and Proposed HOODS Boundaries

Exhibit 3 – U.S. Army Corps of Engineers Shoreline Monitoring of North and South Spits

Figure: Proposed Action area, showing the current HOODS site and the two boundary expansion alternatives in relation to Humboldt Bay, the City of Eureka, and the Samoa State Marine Conservation Area. Alternative 1 (proposed action, in yellow) would expand the existing boundaries by 1 nmi to the north and west. Also shown is the location of the potential Nearshore Sand Placement Site and the HOODS sediment reference site.

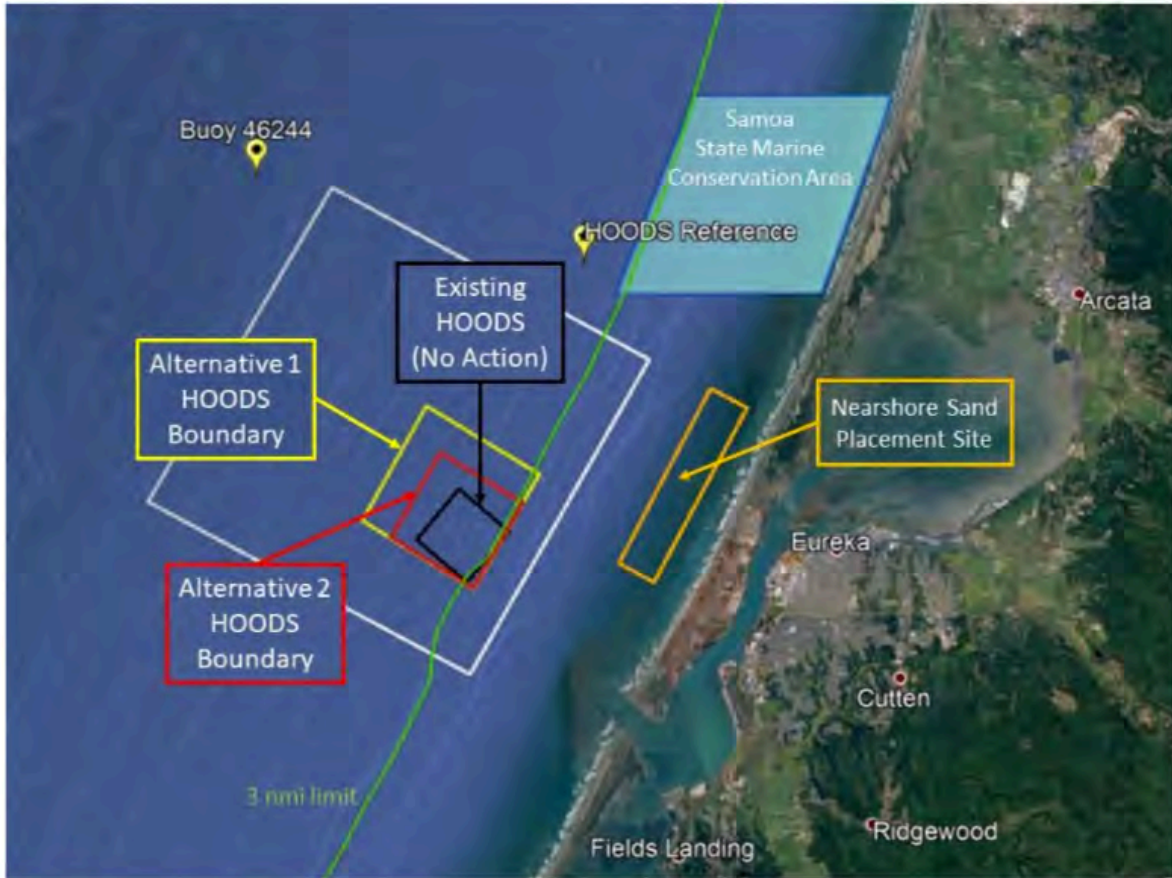


Table: HOODS Expansion Alternative 1 (proposed action) corner coordinates (NAD 83)

Corner	Latitude	Longitude	Centroid Lat.	Centroid Long.
North	40° 50' 18" N	124° 18' 01" W		
East	40° 49' 16" N	124° 15' 46" W	40° 48' 56" N	124° 17' 32" W
South	40° 47' 33" N	124° 17' 05" W		
West	40° 48' 34" N	124° 19' 18" W		

Exhibit 1
CD-0001-20

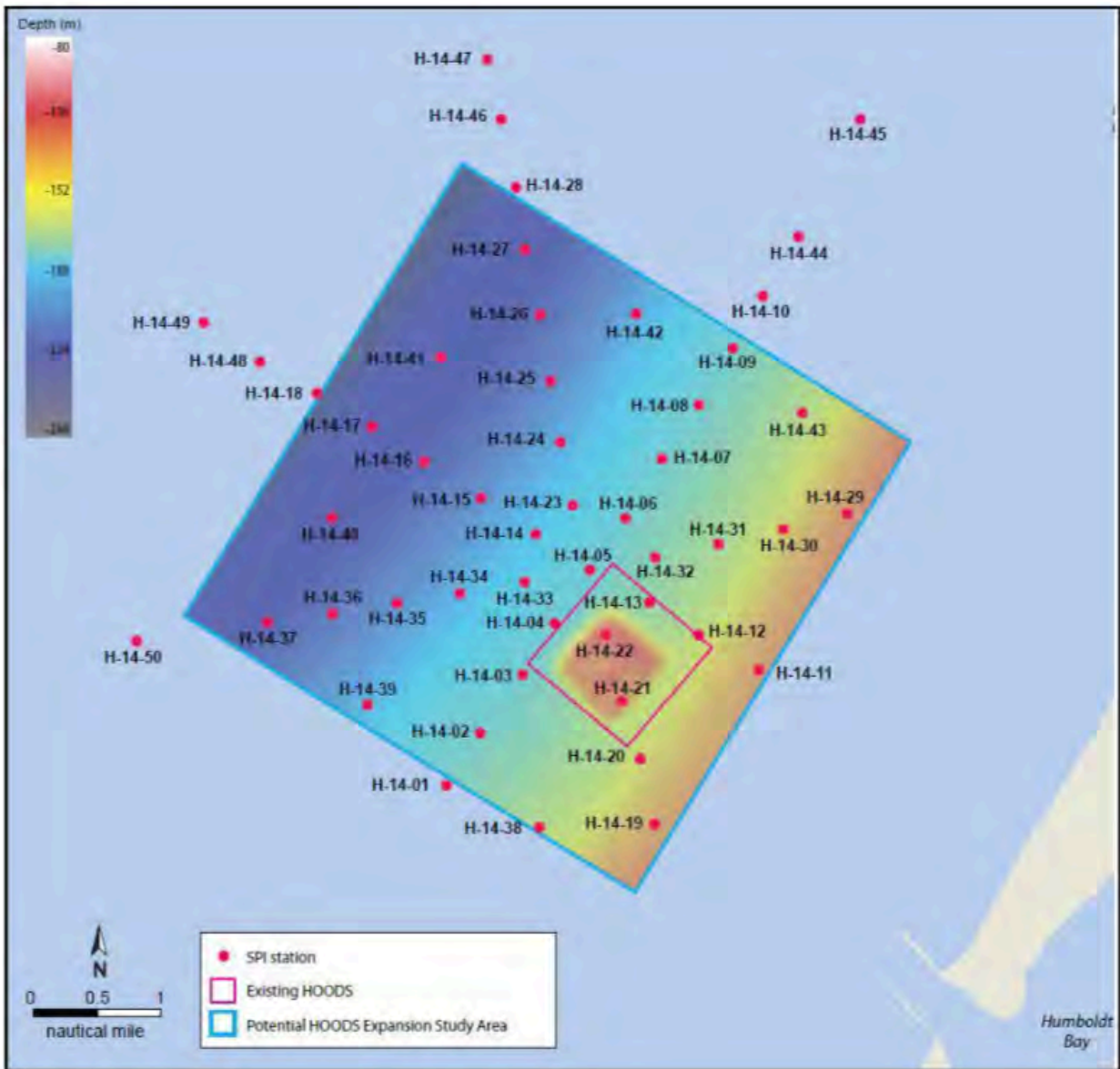


Figure 13. Sampling stations for the 2014 EPA monitoring and baseline surveys at HOODS. Red box is the existing HOODS boundary, while the larger blue box shows the expanded study area within which expansion of HOODS is being considered. Shaded relief bathymetry depicted within the expanded study area was obtained from a high-resolution MBES survey in August 2014. September 2014 sampling included sediment images obtained from all 51 stations, sediment grab samples for physical and chemical analysis collected from 26 stations, and benthic community samples collected at 25 of those stations (EPA 2016).

Exhibit 2
CD-0001-20

HUMBOLDT HARBOR USACE SHORELINE MONITORING

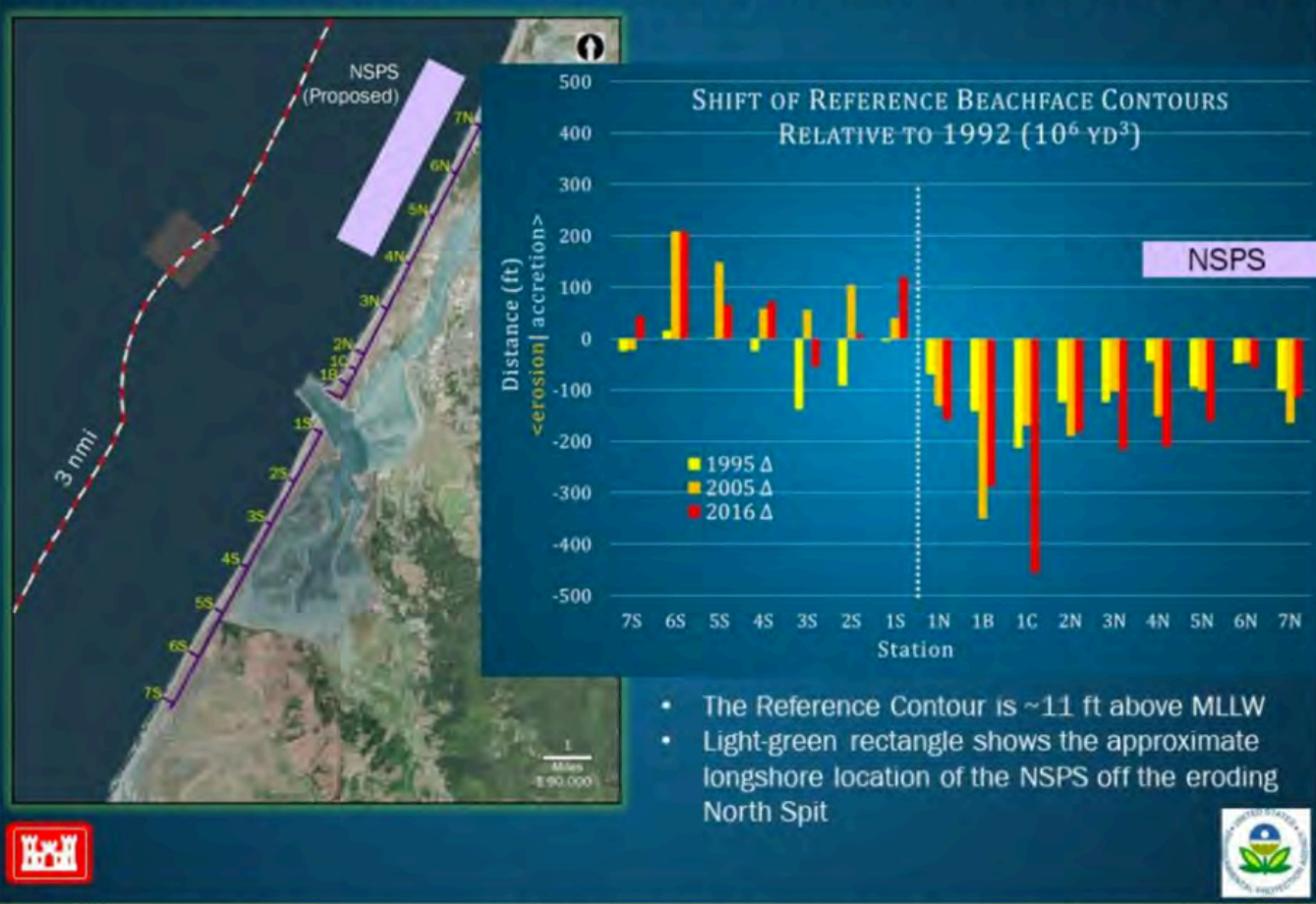


Figure 22. Reference stations and shoreline shifts at selected surveys (1995, 2005, and 2016) relative to the initial survey (1992).

Exhibit 3
CD-0001-20