

CALIFORNIA COASTAL COMMISSION

NORTH CENTRAL COAST DISTRICT
455 MARKET ST, SUITE 300
SAN FRANCISCO, CA 94105
PHONE: (415) 904-5260
FAX: (415) 904-5400
WEB: WWW.COASTAL.CA.GOV



F10a

2-20-0282 (Caltrans' Gleason Beach Highway 1 Realignment)

November 6, 2020

EX PARTE

EXPARTE COMMUNICATION DISCLOSURE FORM

Filed by Commissioner Donne Brownsey

1) Name or description of project: Nov 6, 2020 Agenda: Item 10 (a) Application No. 2-20-0282 CalTrans Gleason Beach project

2) Date and time of receipt of communication:
October 30, 2020, 10:00-11AM

3) Location of communication
By Webex

4) Identity of person(s) initiating communication:
Arnica MacCarthy, CalTrans Senior Planner for the Project

5) Identity of person(s) on whose behalf communication was made:
Cal Trans staff working on the project: Stefan Galvez, 4th District Environmental Manager Lillian Acorda, Project Manager, Kate Anderson CalTrans HQ on Coastal Commission projects

6) Identity of persons(s) receiving communication:
Donne Brownsey

7) Identity of all person(s) present during the communication:
Brownsey, Galvez, MacCarthy, Acorda, Anderson

Complete, comprehensive description of communication
content (attach complete set of any text or graphic material presented):

The discussion followed the presentation slides that CalTrans will be making at the Nov 6, 2020 hearing by and large. I asked a few clarifying questions at the end. The discussion points included a review of the history of the issue and the project, the bluff alignment, the history of emergency repairs, the project restraints including Scotty Creek, Ag lands & Williamson Act issues, SLR, & Highway & Bridge Geometry. They also reviewed the summary of alternatives to the realignment, the bridge elements, the project benefits for Scotty Creek, the proposed public access improvements and their plans to mitigate for loss of public views and other elements. The presentation slides will be sent in separately from this ex parte as I have not received a copy of them at this time.

Date October 30, 2020



Signature of Commissioner Donne Brownsey



Gleason Beach Roadway Realignment Project

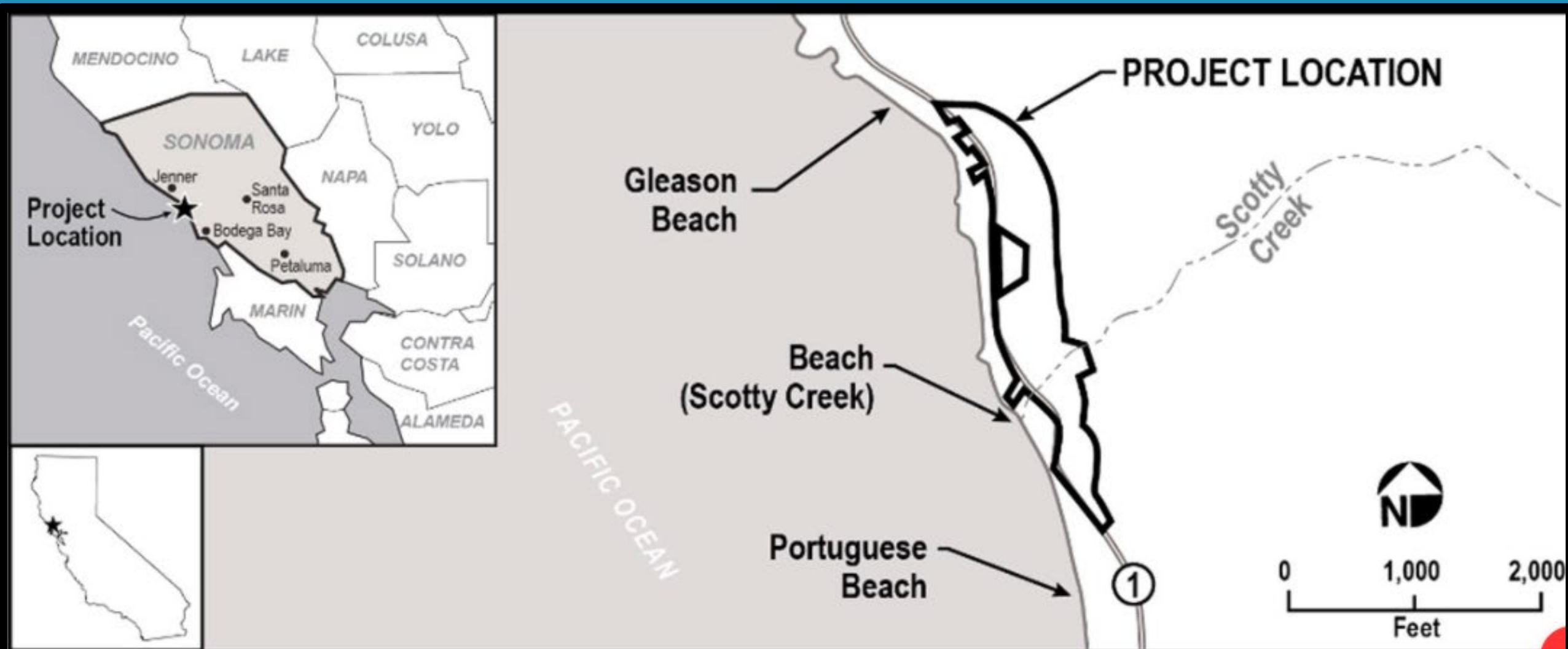
Application number 2-20-0282

Circa 2010

Project Location



CALIFORNIA
COASTAL
COMMISSION



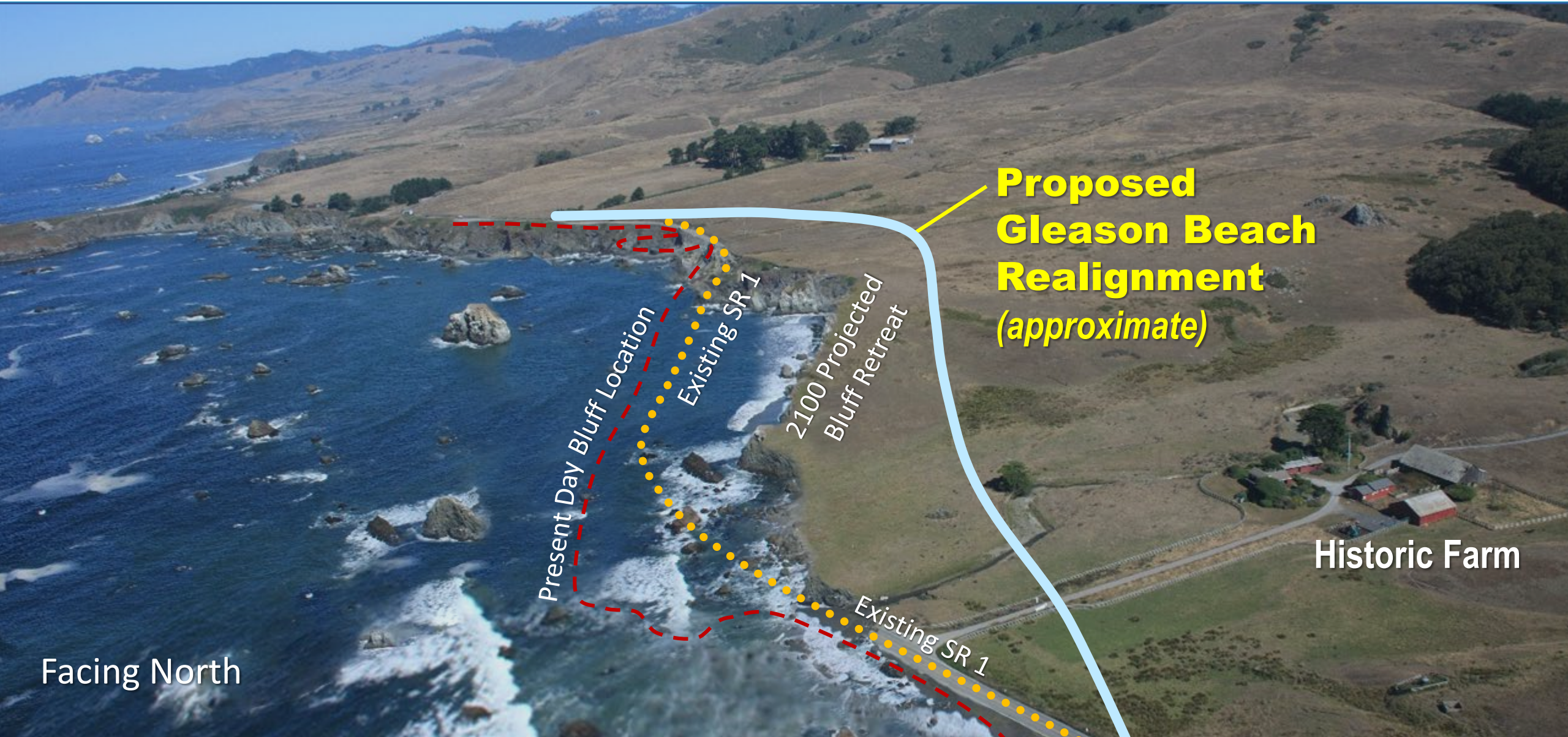
Gleason Beach circa 1972



Projected Coastal Erosion through 2100



CALIFORNIA
COASTAL
COMMISSION



**Proposed
Gleason Beach
Realignment
(approximate)**

Historic Farm

Facing North

History of Caltrans Emergency Repairs



- 2003: Coastal erosion threatened Highway 1
- 2004: Pilings installed along SR 1
- 2016-2017: Emergency repair work: Reinforced soldier pile wall and new rock slope protection
- 2018-2019: Natural erosion/storm related damages further erodes SR 1
- Winter 2019: Emergency repair work: Minor inland realignment & highway stabilization completed
- Approximately \$10 million to fund emergency repair work to date



The Gleason Beach Roadway Realignment Project

PROVIDES

a long-term,
sustainable solution

PROTECTS

State Route 1 from
coastal erosion

MAINTAINS

long-term local and
regional connectivity
for surrounding
communities

Project Constraints



CALIFORNIA
COASTAL
COMMISSION

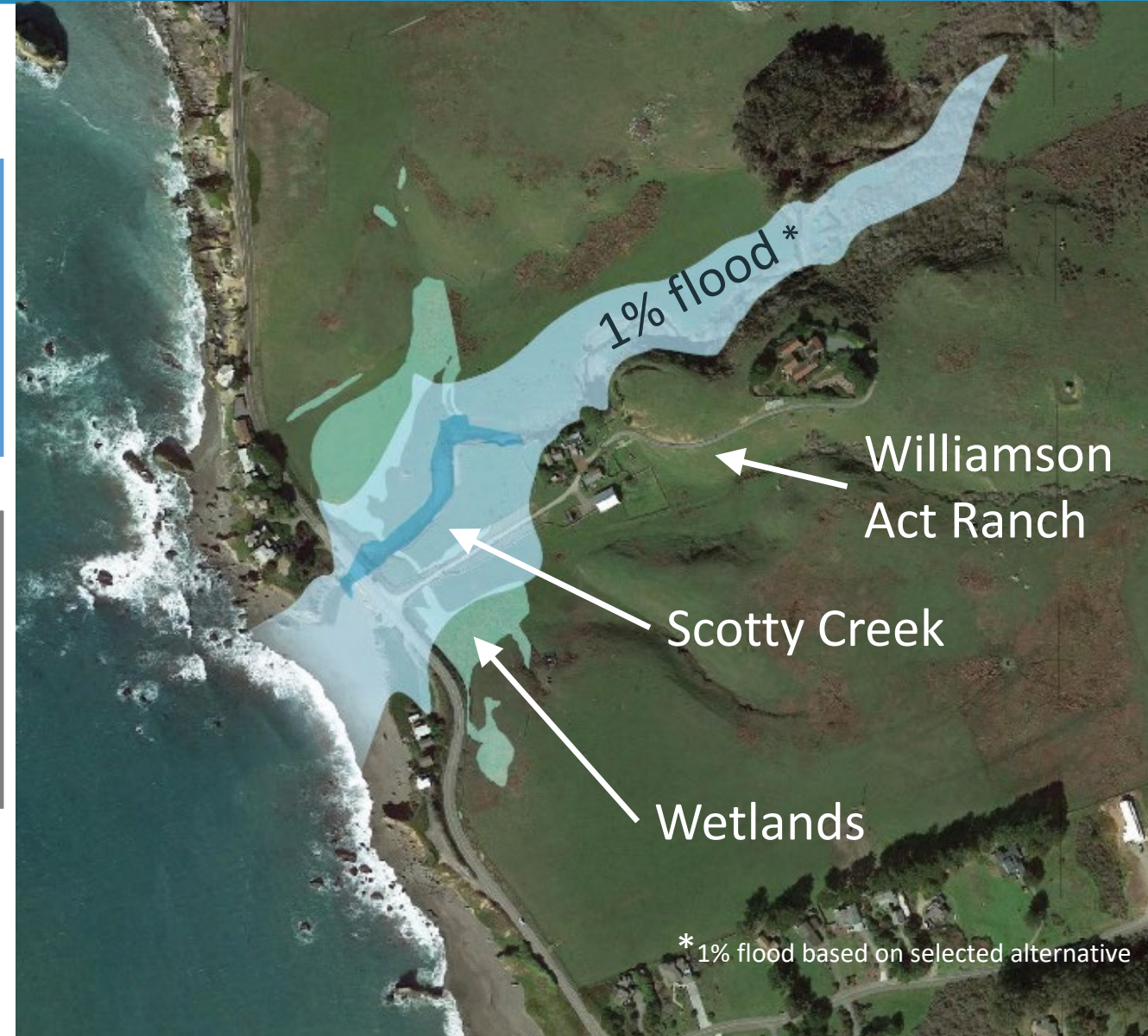


Scotty Creek
Hydrology &
Floodplain

Coastal
Topography &
Sea Level Rise

Retain Access to
Agricultural
Land to the East

Highway and
Bridge
Geometry



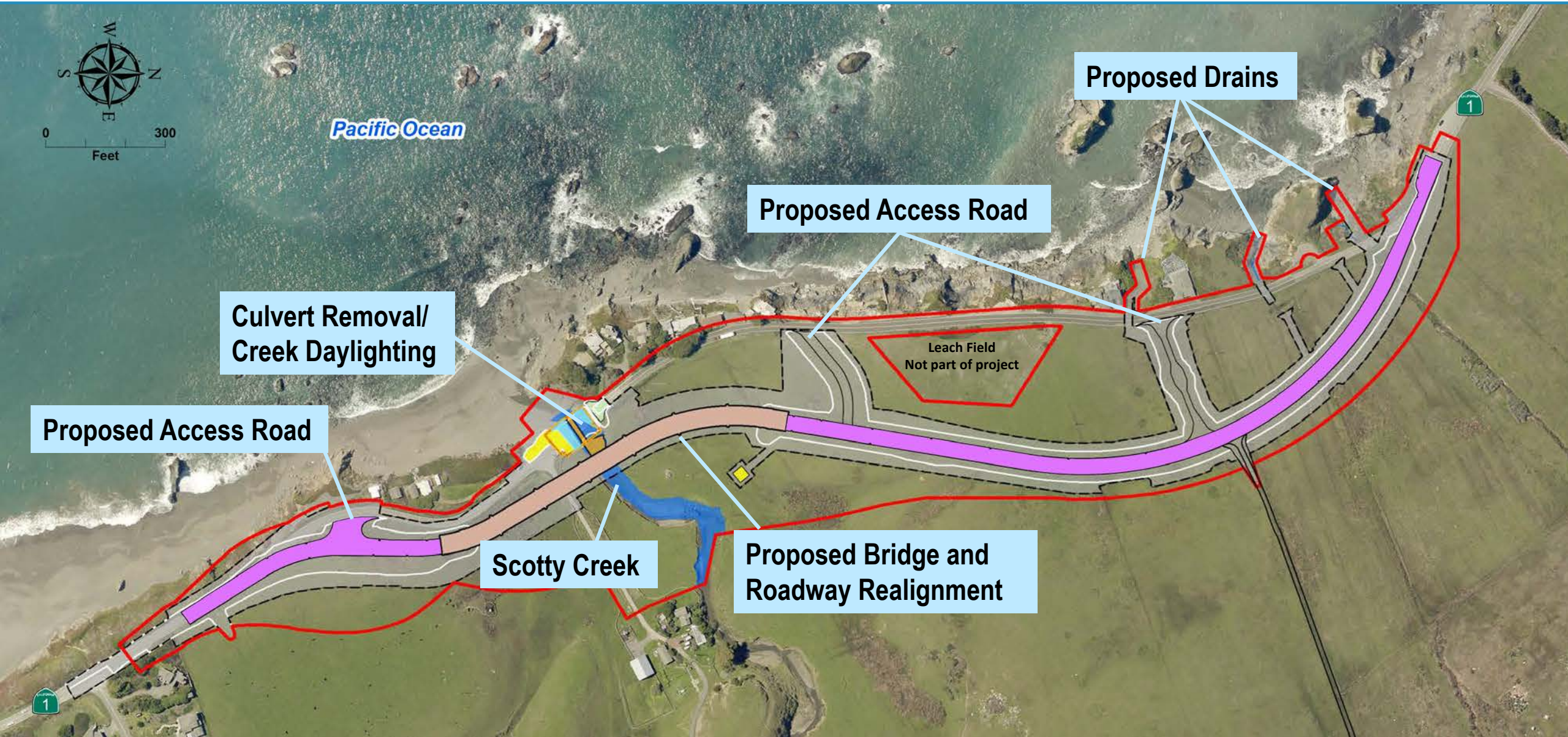
Alternative Selection

- 29.3 Mile detour taking drivers up to an hour
- 20 Alternatives Studied
- 17 Alternatives Rejected
- 3 Final Alternatives Included for Study (Alternatives 19A, 19B, 20C) in Environmental Document
- Selected Alternative: Least Environmentally Damaging (Alternative 19A)
- Reasons for rejection are based on:
 - Feasibility (engineering and safety considerations)
 - Environmental Impacts (ecological, cultural & visual considerations)

Proposed Gleason Beach Roadway Realignment Project: 19A



CALIFORNIA
COASTAL
COMMISSION



Pacific Ocean

Proposed Drains

Proposed Access Road

Culvert Removal/
Creek Daylighting

Leach Field
Not part of project

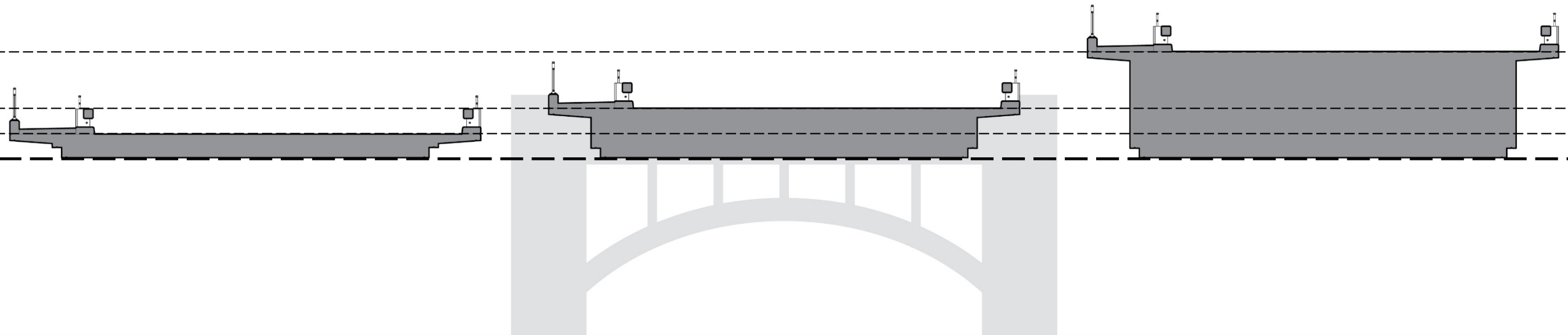
Proposed Access Road

Scotty Creek

Proposed Bridge and
Roadway Realignment

Bridge Geometry

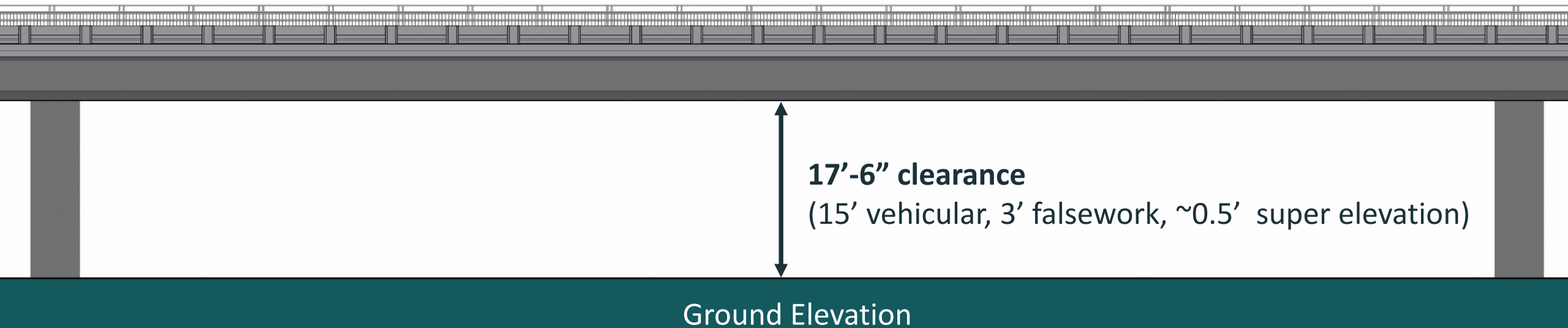
- Bridge structure thickness is variable within reasonable structural limits
- Railing and curb heights are safety elements that are not variable
- Thinner structure: more columns
- Thicker structure: fewer columns
- Other impacts by raising the Bridge profile due to thicker bridge structure



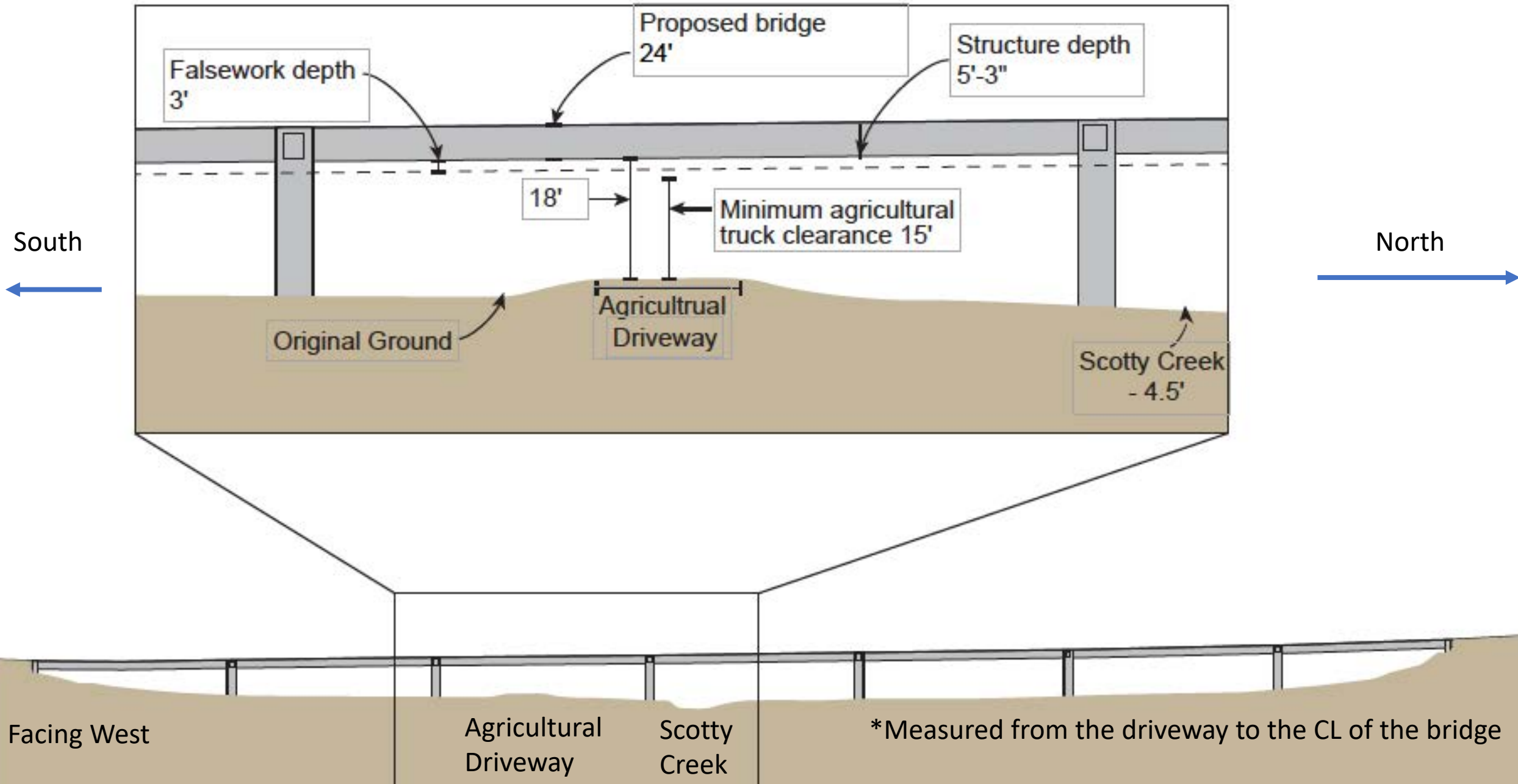
Ground Elevation

Bridge Geometry

- Columns impact environmental footprint: avoid impacts to Scotty Creek, wetlands and flood plain
- Deck thickness impacts views



Bridge Geometry



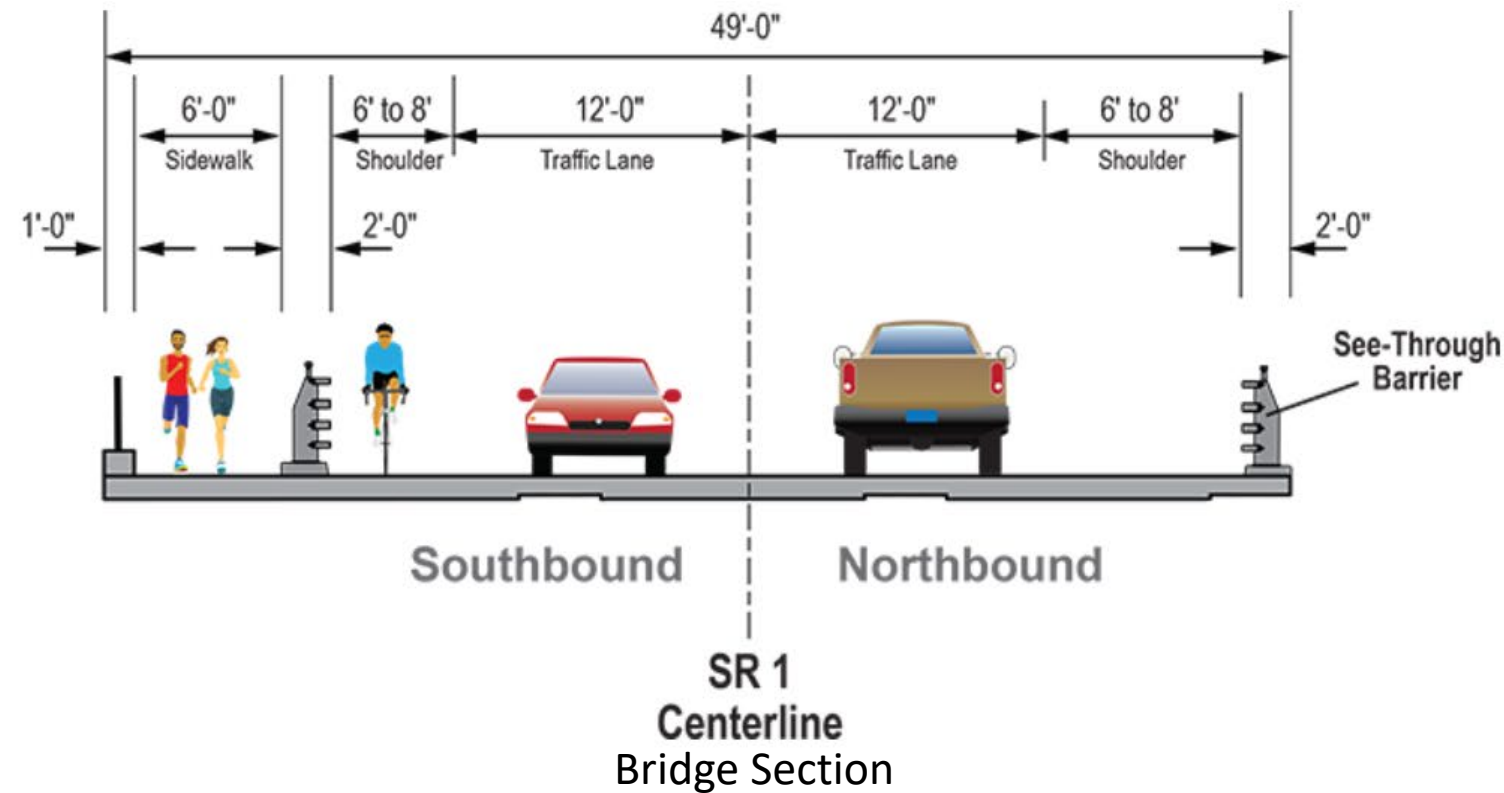
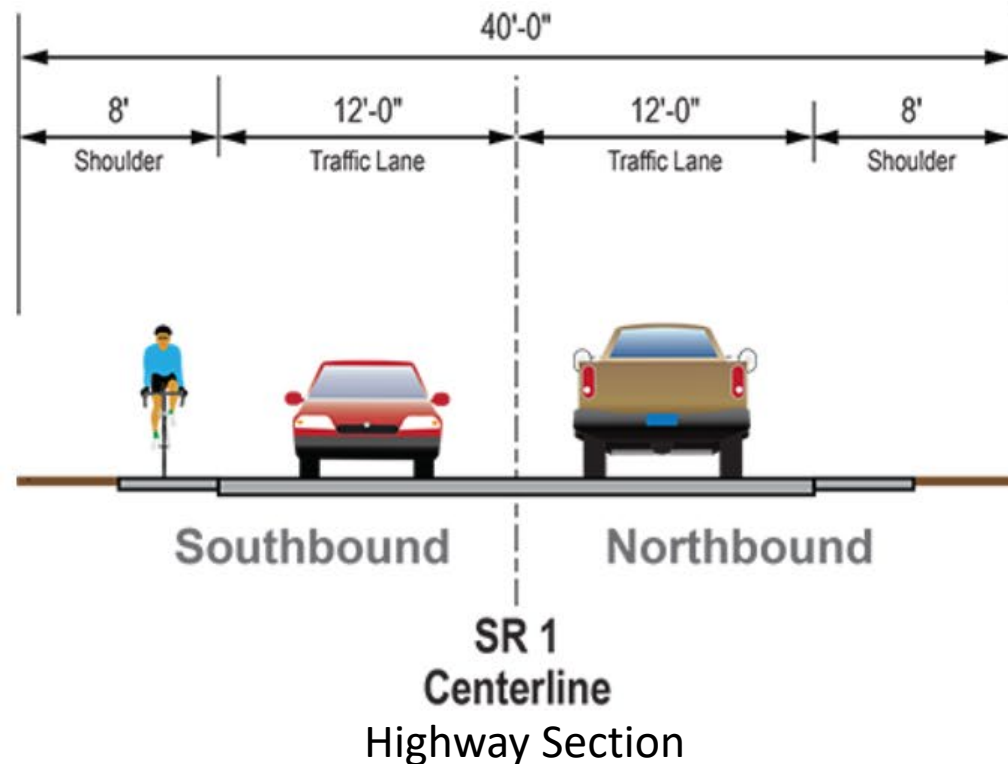
Pedestrian and Bicycle Access



CALIFORNIA
COASTAL
COMMISSION



- Connects California Coastal Trail
- Meet safety and accessibility requirements
- Provide dedicated multi-modal access on bridge



Proposed Project Views



CALIFORNIA
COASTAL
COMMISSION



Proposed Project Benefits: *Scotty Creek*



- Eliminating grazing along Scotty creek within the project limits
- Remove culverts, daylight Scotty Creek, eliminate fish passage barrier
- Native planting to establish vegetated creek banks



Proposed: *Public Access Improvements*



Visual simulations are illustrative and may not represent the final design

- Segment of California Coastal Trail along existing Highway 1
- Enhanced beach access directly from existing Highway 1
- Inclusion of bike lanes and a pedestrian sidewalk on the bridge
- Development of Pedestrian bridge over Scotty Creek
- Sonoma County led Public Access Taskforce

The Beach at Scotty Creek



CALIFORNIA
COASTAL
COMMISSION



Proposed: *Coastal Hazard Debris Clean-up*

- Cooperative agreement with Sonoma County as an in-lieu fee to remove coastal debris from the beach and coastal bluff



Project Process: Timeline



CALIFORNIA
COASTAL
COMMISSION



Year

2004

2005

2006

2007

2008

2009

2010

2011

2012

2013

2014

2015

2016

2017

2018

2019

2020

2021

2022

Define Purpose and Need

Project Initiation

Preliminary Design

Engineering & Environmental Constraints

Determine Acceptable Alternatives

Environmental Document

Select & Continue to Refine
and Develop Final Design

Bid Completed Design

Build Final Project

Public & Community Meetings

3/26/14 Scoping Meeting

7/29/15 Outreach Meeting

4/12/16 Design Update Meeting

2/23/17 Design Selection Meeting

11/16/17 Design Update Meeting

4/17/18 *County CDP Consolidation Vote*

2019SON 1 Emergency Repair

Community Meetings

10/12/20 Outreach Meeting

10/20/20 County Board of Supervisors

11/2020 Coastal Commission Hearing

WE ARE HERE

THANK YOU