

CALIFORNIA COASTAL COMMISSION

SOUTH COAST DISTRICT OFFICE
301 E. OCEAN BLVD, SUITE 300
LONG BEACH, CA 90802-4325
VOICE (562) 590-5071
FAX (562) 590-5084



W15a

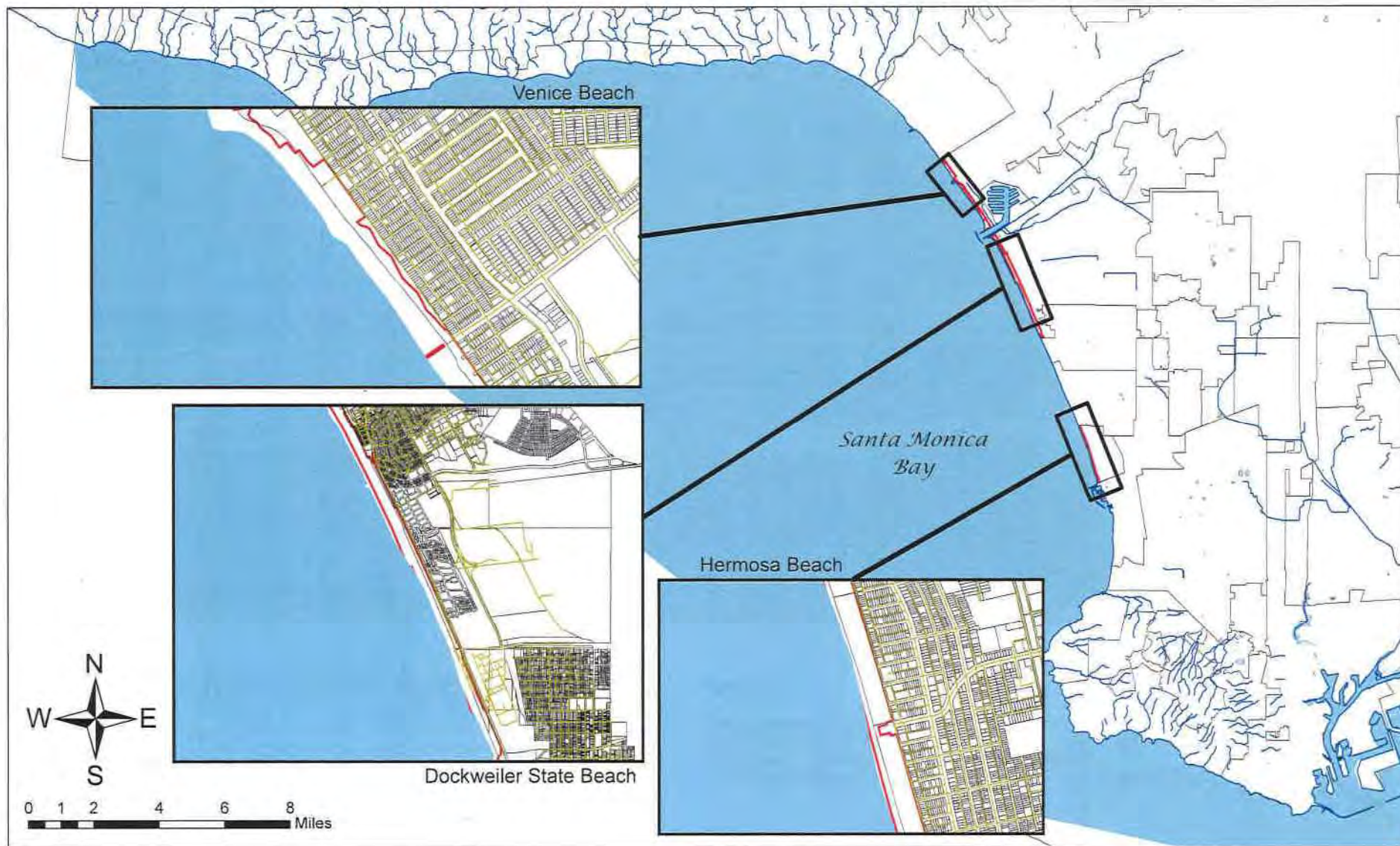
5-20-0540 (LOS ANGELES COUNTY
DEPARTMENT OF BEACHES & HARBORS)
NOVEMBER 4, 2020

EXHIBITS

Table of Contents

EXHIBIT 1—VICINITY MAP	2
EXHIBIT 2—VENICE BEACH SITE PLAN.....	3
EXHIBIT 3—DOCKWEILER STATE BEACH SITE PLAN	4
EXHIBIT 4—HERMOSA BEACH SITE PLAN	7

Berm Location Map

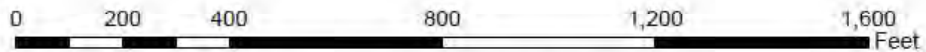


Map June 2014, Department of Beaches and Harbors, Planning Division.

Exhibit 2 – Venice Beach Site Plan



Venice Beach Berm Areas

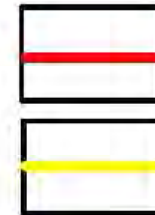


2017 Aerial. Map edited 2020. Department of Beaches and Harbors, Planning Division.

Legend

Berm Dimensions

- A) 700 feet (3,890 cu.yds.) [approx.]
- B) 200 feet (1,111 cu.yds.) [approx.]
- C) 700 feet (3,890 cu.yds.) [approx.]



Proposed Berm

Beach Parcel Line



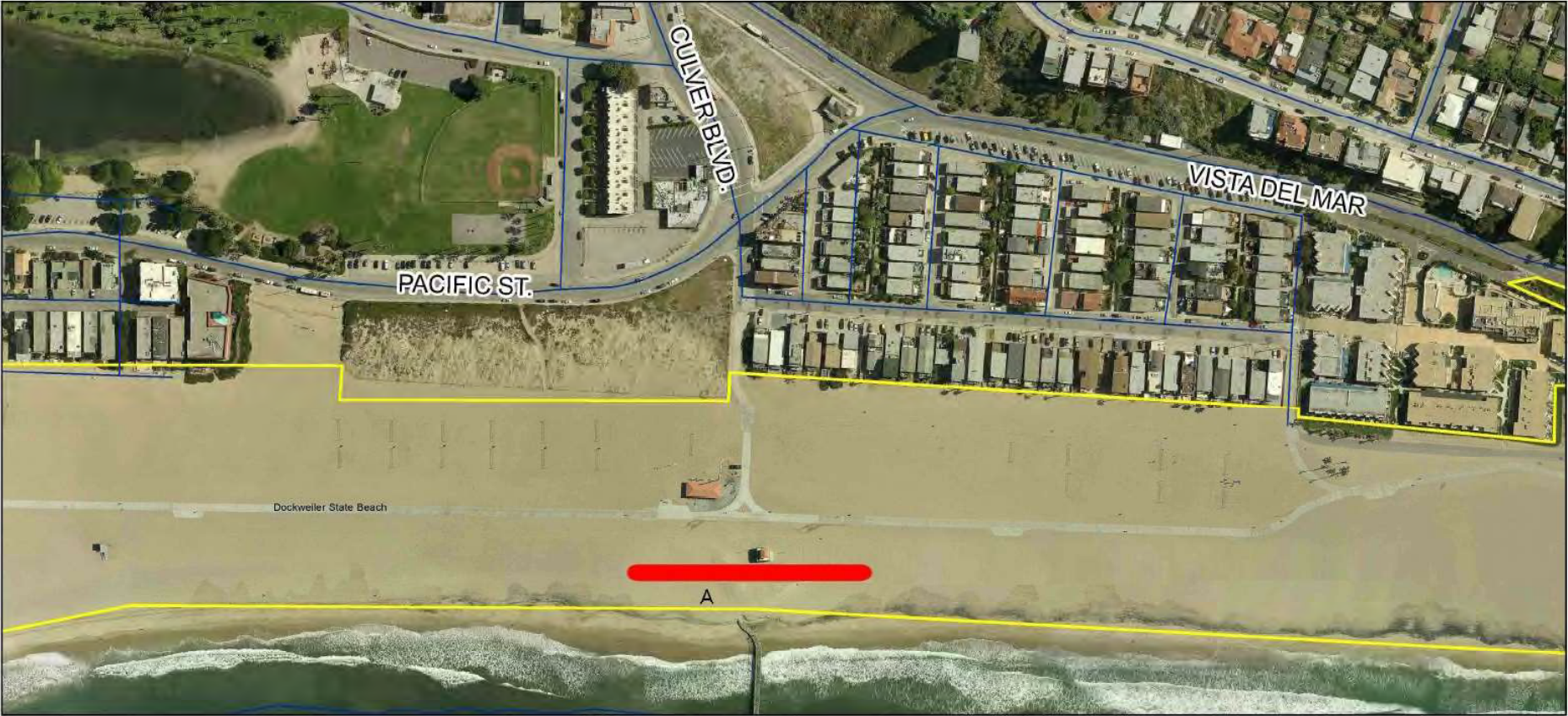
California Coastal Commission

5-20-0540

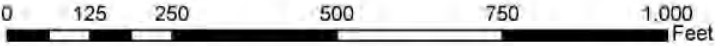
Exhibit 2

Page 1 of 1

Exhibit 3–Dockweiler State Beach Site Plan



Dockweiler State Beach
Culver Blvd. Berm Area



Map October 2020, Department of Beaches and Harbors, Planning Division.

Legend

Berm Dimensions
A) 300 feet (1,667 cu.yards) [approx.]



Beach Parcel Line





Dockweiler State Beach RV Lot Berm Area

0 125 250 500 750 1,000 Feet

Map June 2014, Department of Beaches and Harbors, Planning Division.

Legend

Berm Dimensions
A) 200 feet (1,111 cu.yds.) [approx.]
B) 1,500 feet (8,336 cu.yds.) [approx.]



Proposed Berm

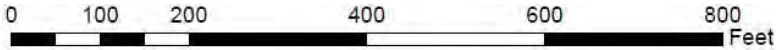


Beach Parcel Line





Dockweiler State Beach Youth Center Berm Area



2017 Aerial. Map edited October 2020. Department of Beaches and Harbors, Planning Division.

Legend

Berm Dimensions
A) 600 feet (3,334 cu.yds.) [approx.]



Exhibit 4 – Hermosa Beach Site Plan



Hermosa Beach Pier Berm Area

Legend

Berm Dimension
A) 200 feet (1,111 cu.yds.) [approx.]
B) 300 feet (1,667 cu.yds.) [approx.]



Proposed Berm



Beach Parcel Line

0 150 300 600 900 1,200 Feet

Map June 2014, Department of Beaches and Harbors, Planning Division

