

CALIFORNIA COASTAL COMMISSION

455 MARKET STREET, SUITE 228
SAN FRANCISCO, CA 94105-2219
FAX (415) 904-5400
TDD (415) 597-5885



F13a

CD-0007-19 (U.S. Army Corps of Engineers)

December 11, 2020

EXHIBITS

Table of Contents

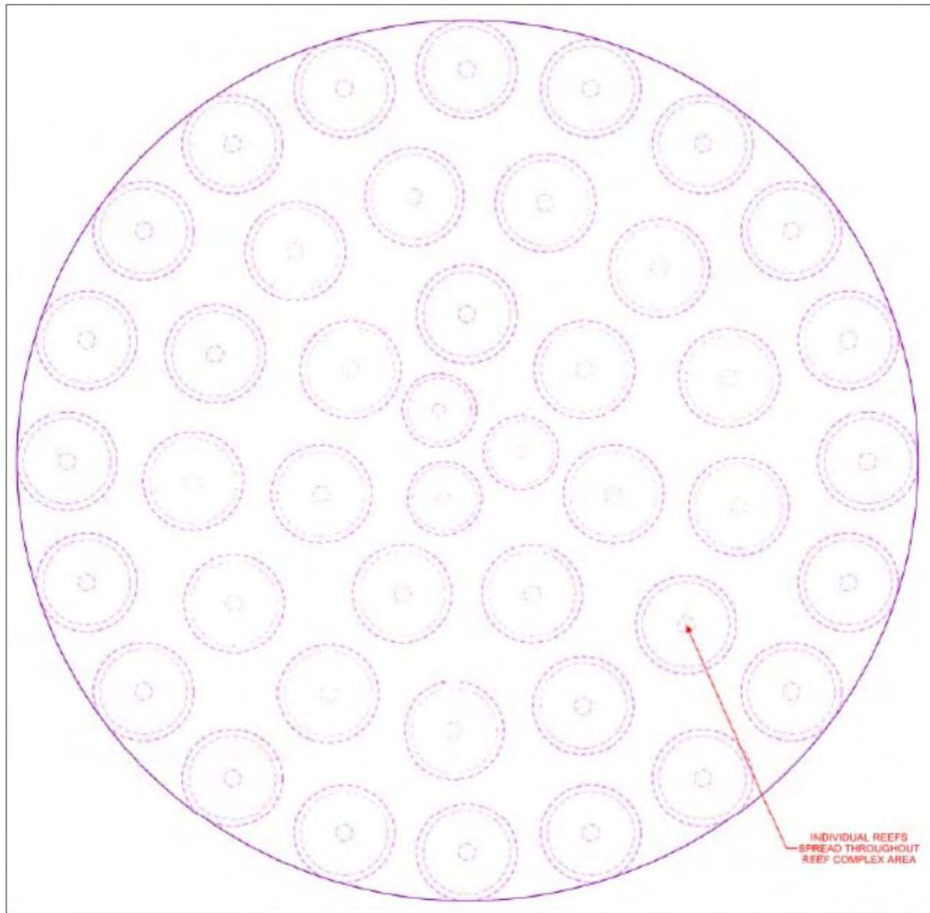
- [Exhibit 1](#) – Location Map
- [Exhibit 2](#) – Built Habitat Features Map
- [Exhibit 3](#) – Distribution of Open Water Rocky Reef Complex
- [Exhibit 4](#) – Nearshore Rocky Reef and Eelgrass Cross-section
- [Exhibit 5](#) – Kelp Reef Construction Method
- [Exhibit 6](#) – Habitats within the Project Area

Exhibit 1



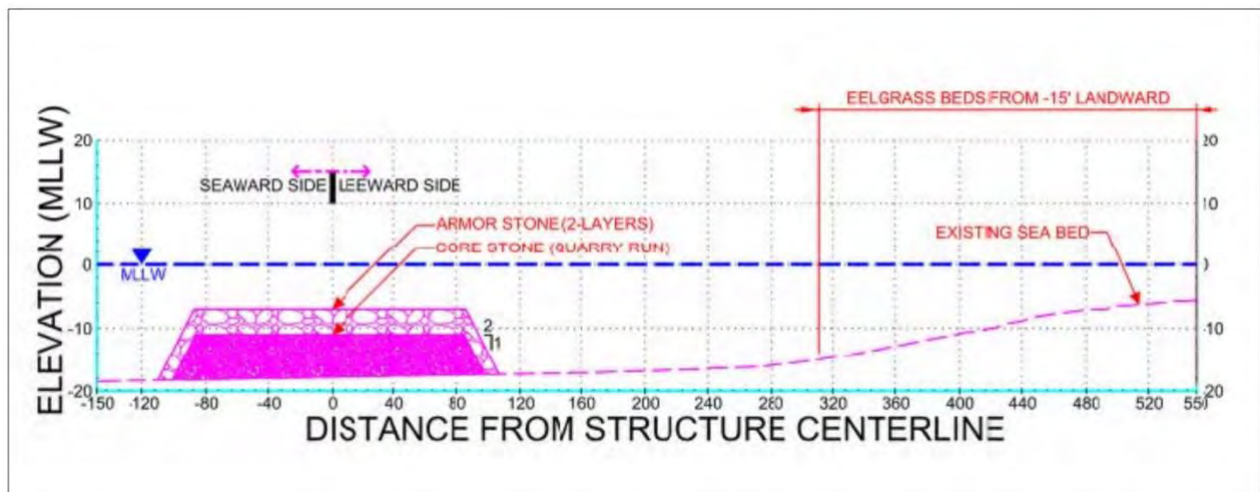
Location of East San Pedro Bay

Exhibit 3



Distribution of open water rocky reefs

Exhibit 4



Cross-section of nearshore rocky reef and adjacent eelgrass bed

Exhibit 5

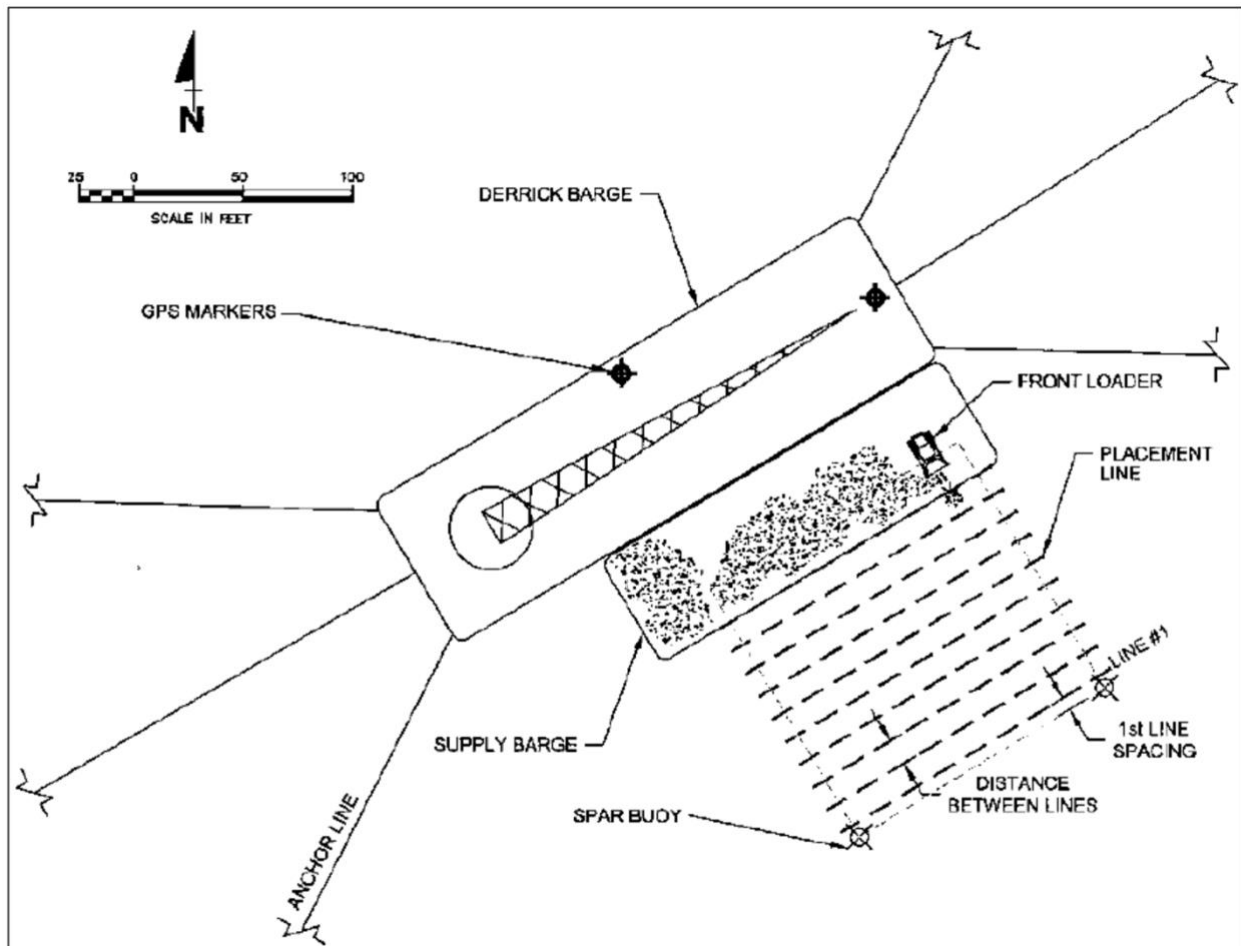
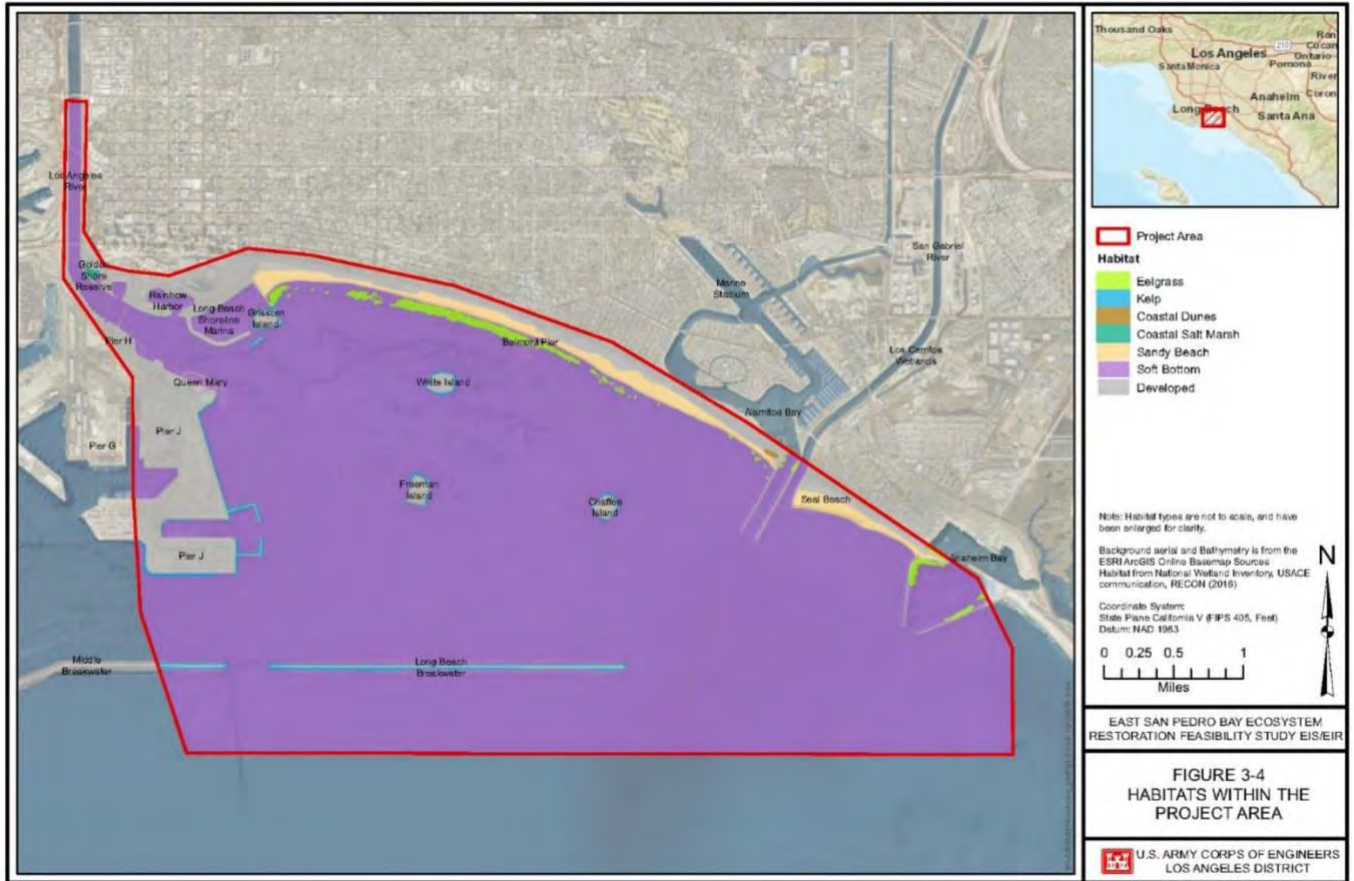


Diagram of construction equipment for rock placement

Exhibit 6



Existing habitats within East San Pedro Bay