

## **CALIFORNIA COASTAL COMMISSION**

CENTRAL COAST DISTRICT  
725 FRONT STREET, SUITE 300  
SANTA CRUZ, CA 95060  
PHONE: (831) 427-4863  
FAX: (831) 427-4877  
WEB: WWW.COASTAL.CA.GOV



# **W20a**

**CDP 3-19-1199 (CALTRANS – TORO CREEK BRIDGE)**

**MAY 13, 2020 HEARING**

## **EXHIBITS**

### **Table of Contents**

**Exhibit 1: Project Location Map**

**Exhibit 2: Project Site Aerial Photos**

**Exhibit 3: Project Site Photos**


**Exhibit 4: Project Plans (Excerpts)**


**Exhibit 5: Bridge Railing Simulation & Plans**

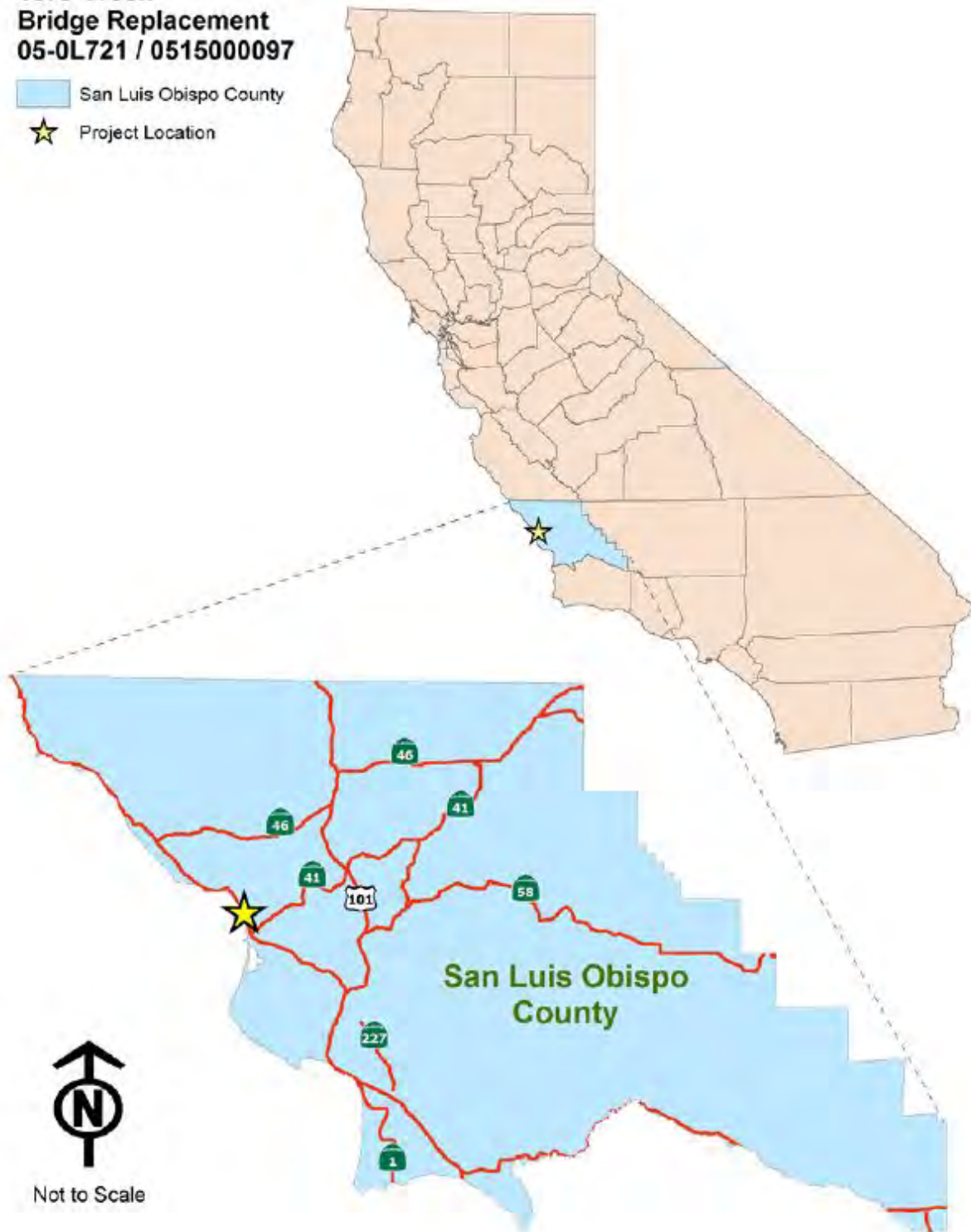
**Exhibit 6: Project Impacts Maps**

**Exhibit 7: Mitigation Map**

**Toro Creek  
Bridge Replacement  
05-0L721 / 0515000097**

 San Luis Obispo County

 Project Location













View from below southbound bridge looking at northbound bridge and up Toro Creek.



View from below northbound bridge looking seaward.





View of Toro Creek north bank riparian. Photo taken south bank facing north.  
Dashed line denotes approximate limit of work area upstream of bridge.



View of Toro Creek south bank riparian. Photo taken from south end of northbound bridge facing SE.





View of existing northbound bridge piles and RSP looking up Toro Creek (top) and south (bottom).

# INDEX OF PLANS

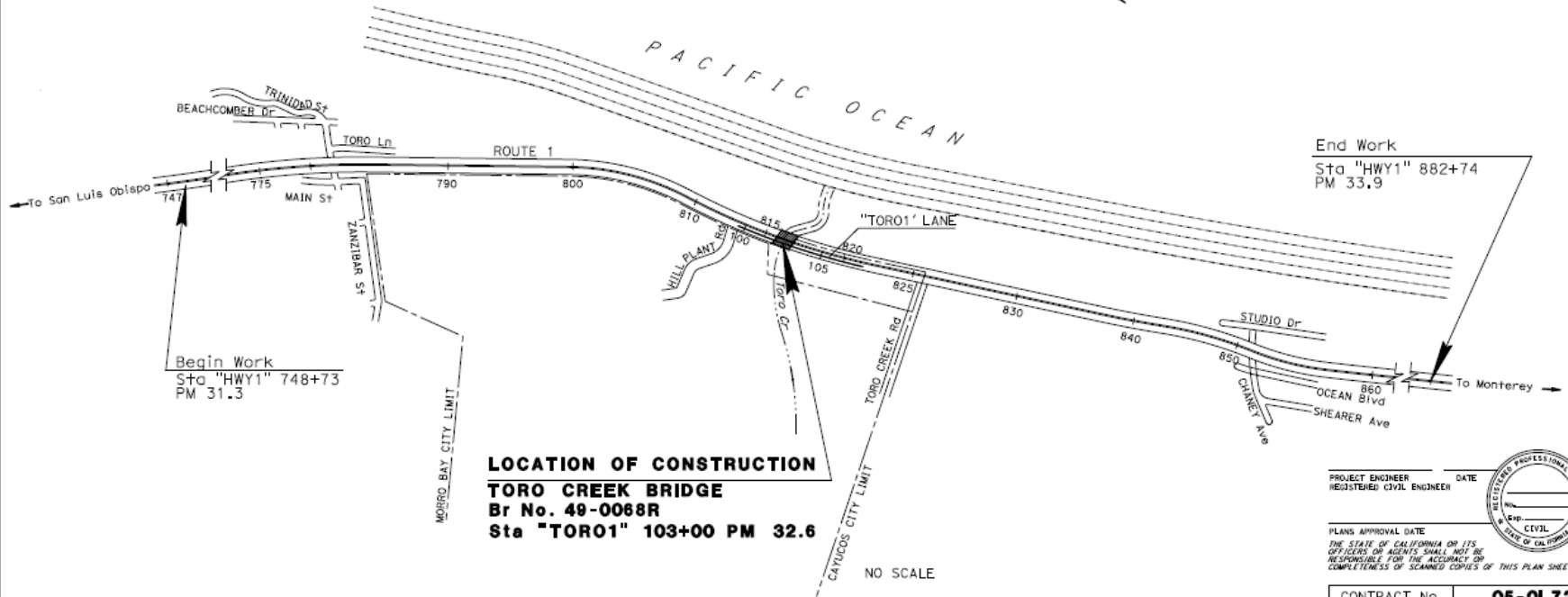
SHEET No.	DESCRIPTION
1	TITLE AND LOCATION MAP
2-4	TYPICAL CROSS SECTIONS
5-7	LAYOUTS
8	PROFILE AND SUPERELEVATION DIAGRAM
9-10	CONSTRUCTION DETAIL
11-13	DRAINAGE PLAN, PROFILE, DETAILS, AND QUANTITIES
14	UTILITY PLANS
15	CONSTRUCTION AREA SIGNS
16-24	STAGE CONSTRUCTION PLANS, DETAILS AND QUANTITIES
25-34	TRAFFIC HANDLING PLANS AND QUANTITIES
35-42	PAVEMENT DELINEATION AND SIGN PLANS, DETAILS AND QUANTITIES
43-44	SUMMARY OF QUANTITIES
45-52	LANDSCAPE PLANS
53-54	ELECTRICAL PLANS
XX-XX	REVISED STANDARD PLANS
STRUCTURE PLANS	
XX-XX	TORO CREEK BRIDGE (REPLACEMENT)

THE STANDARD PLANS LIST APPLICABLE TO THIS CONTRACT IS INCLUDED IN THE NOTICE TO BIDDERS AND SPECIAL PROVISIONS BOOK.

## STATE OF CALIFORNIA DEPARTMENT OF TRANSPORTATION PROJECT PLANS FOR CONSTRUCTION ON STATE HIGHWAY IN SAN LUIS OBISPO COUNTY IN MORRO BAY AT TORO CREEK BRIDGE

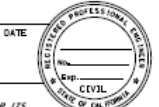
TO BE SUPPLEMENTED BY STANDARD PLANS DATED 2018

DIST	COUNTY	ROUTE	POST MILES TOTAL PROJECT	SHEET NO.	TOTAL SHEETS
05	SLO	1	32.6	1	??



**LOCATION OF CONSTRUCTION**  
**TORO CREEK BRIDGE**  
**Br No. 49-0068R**  
**Sta "TOR01" 103+00 PM 32.6**

PROJECT ENGINEER  
REGISTERED CIVIL ENGINEER



PLANS APPROVAL DATE  
THE STATE OF CALIFORNIA OR ITS  
OFFICERS OR AGENTS SHALL NOT BE  
RESPONSIBLE FOR THE ACCURACY OR  
COMPLETENESS OF SCANNED COPIES OF THIS PLAN SHEET.

CONTRACT No.	<b>05-0L7214</b>
PROJECT ID	<b>0515000097</b>

THE CONTRACTOR SHALL POSSESS THE CLASS (OR CLASSES)  
OF LICENSE AS SPECIFIED IN THE "NOTICE TO BIDDERS."

BORDER LAST REVISED 9/30/2012 CALTRANS WEB SITE (S: HTTP://WWW.DOT.CA.GOV/

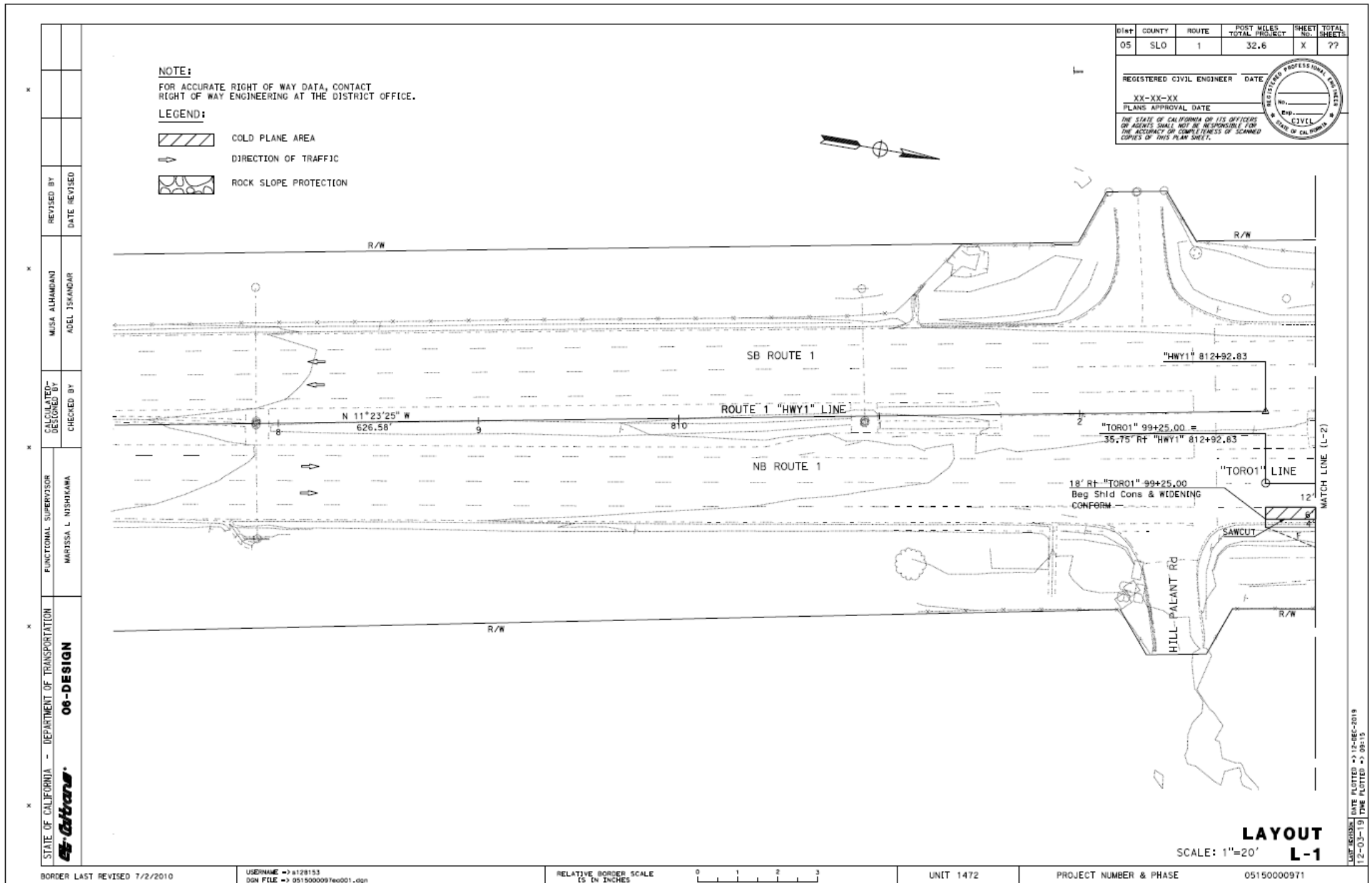
RELATIVE BORDER SCALE 3/8" = 1' INCHES

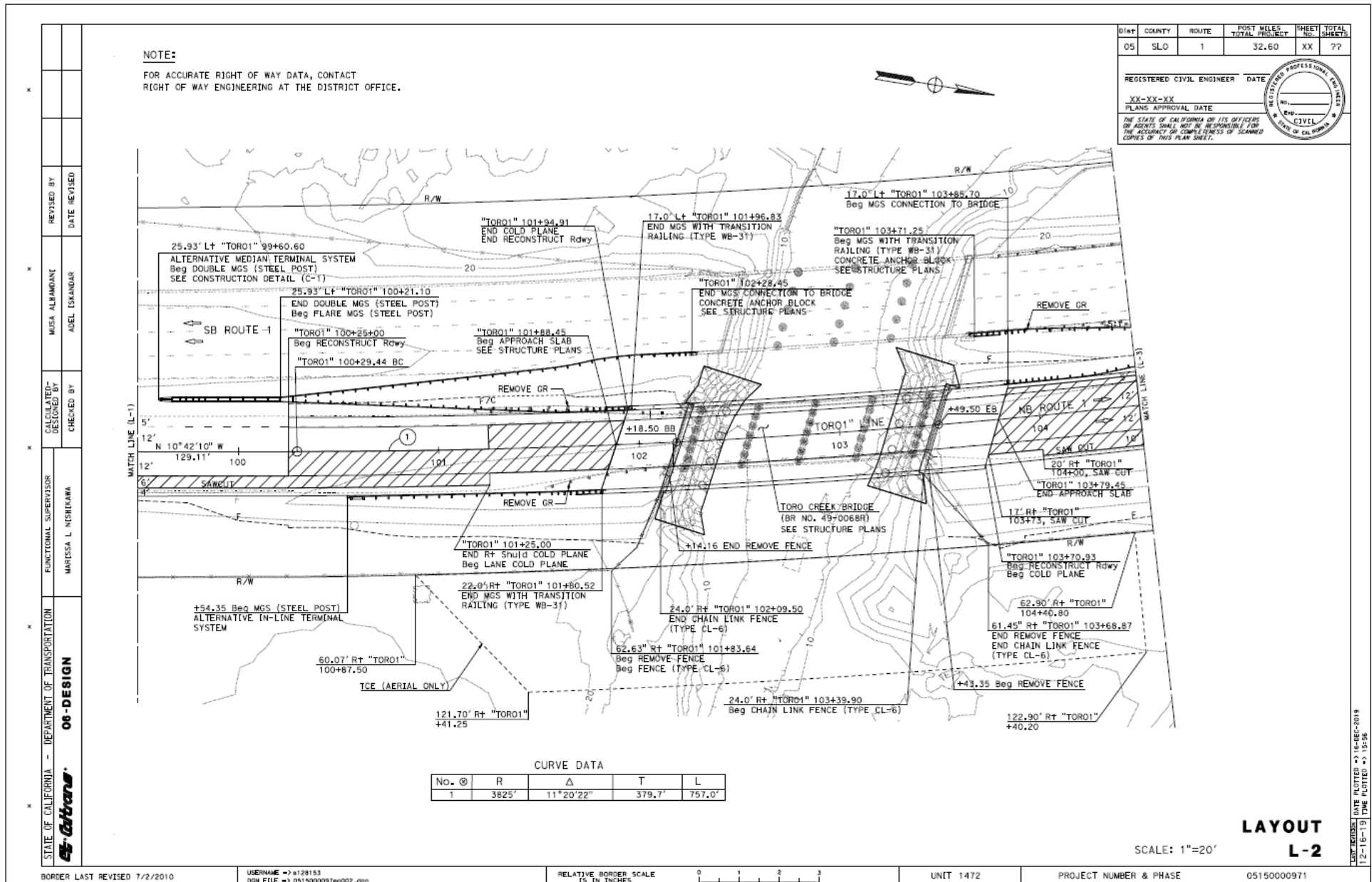
USERNAME => R128153  
DGN FILE => 0515000097a0001.dgn

UNIT 1472 PROJECT NUMBER & PHASE 05150000971

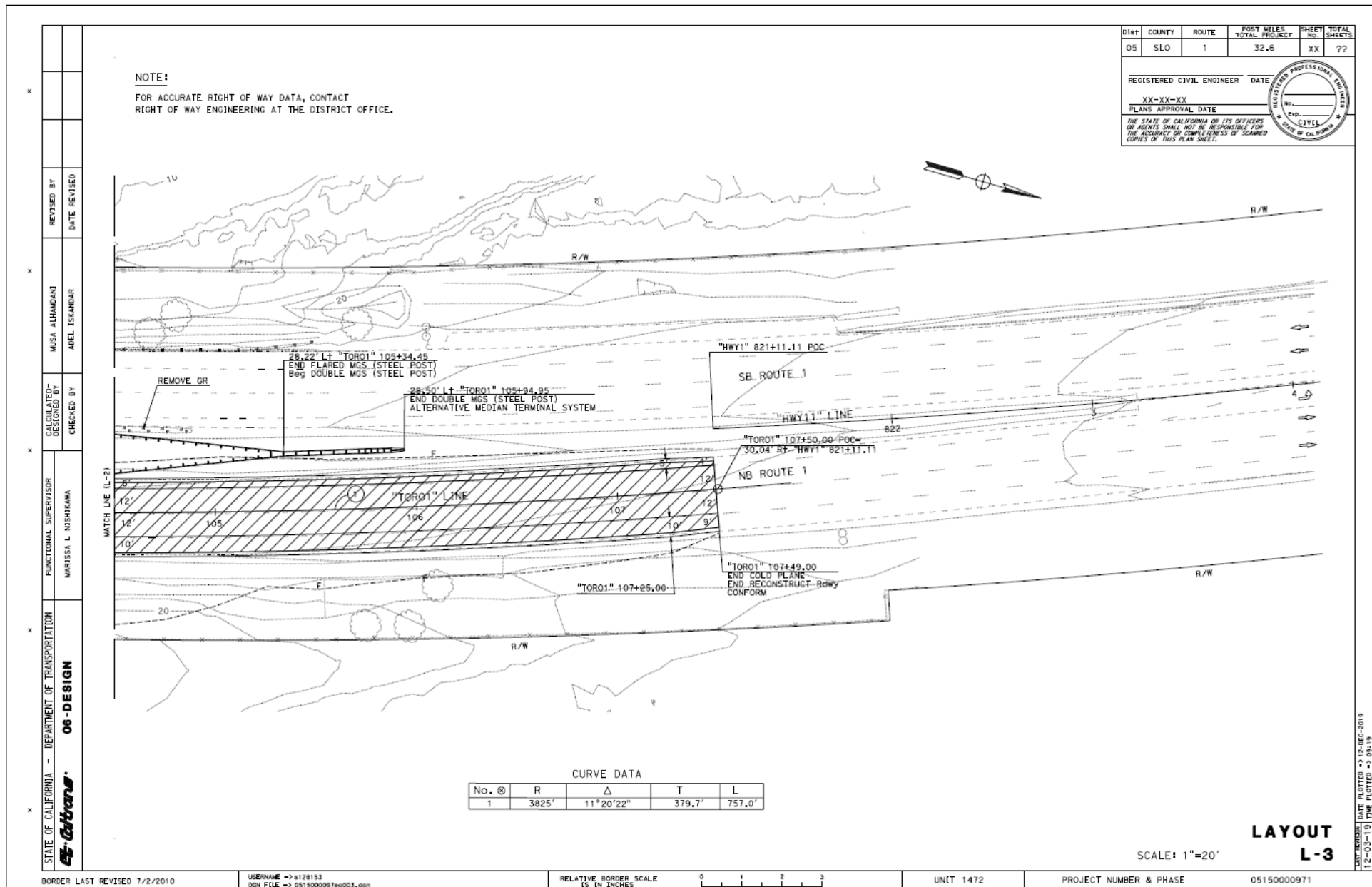
DATE PLOTTED => 12-DEC-2019  
TIME PLOTTED => 08:10

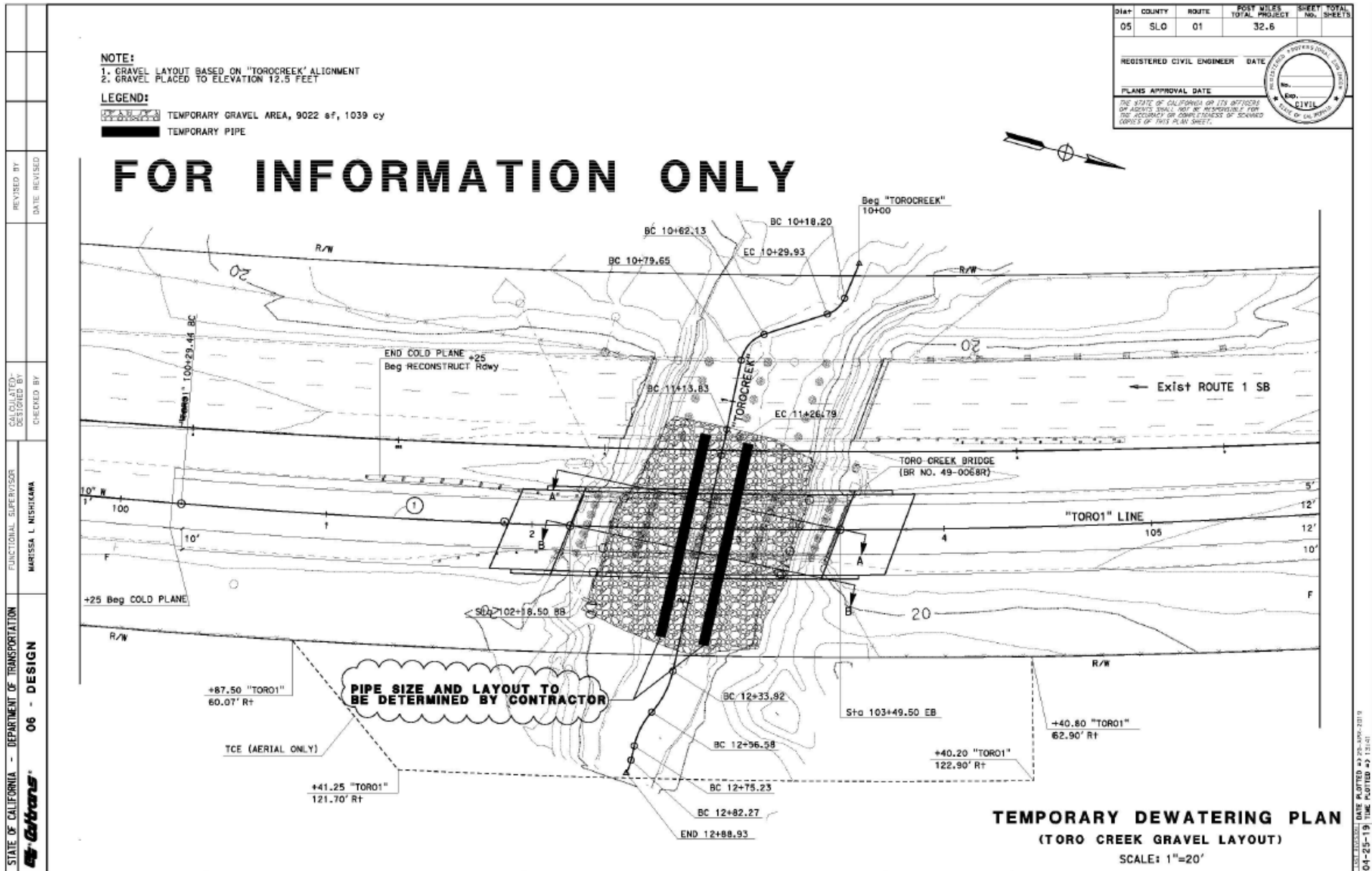














# FOR INFORMATION ONLY

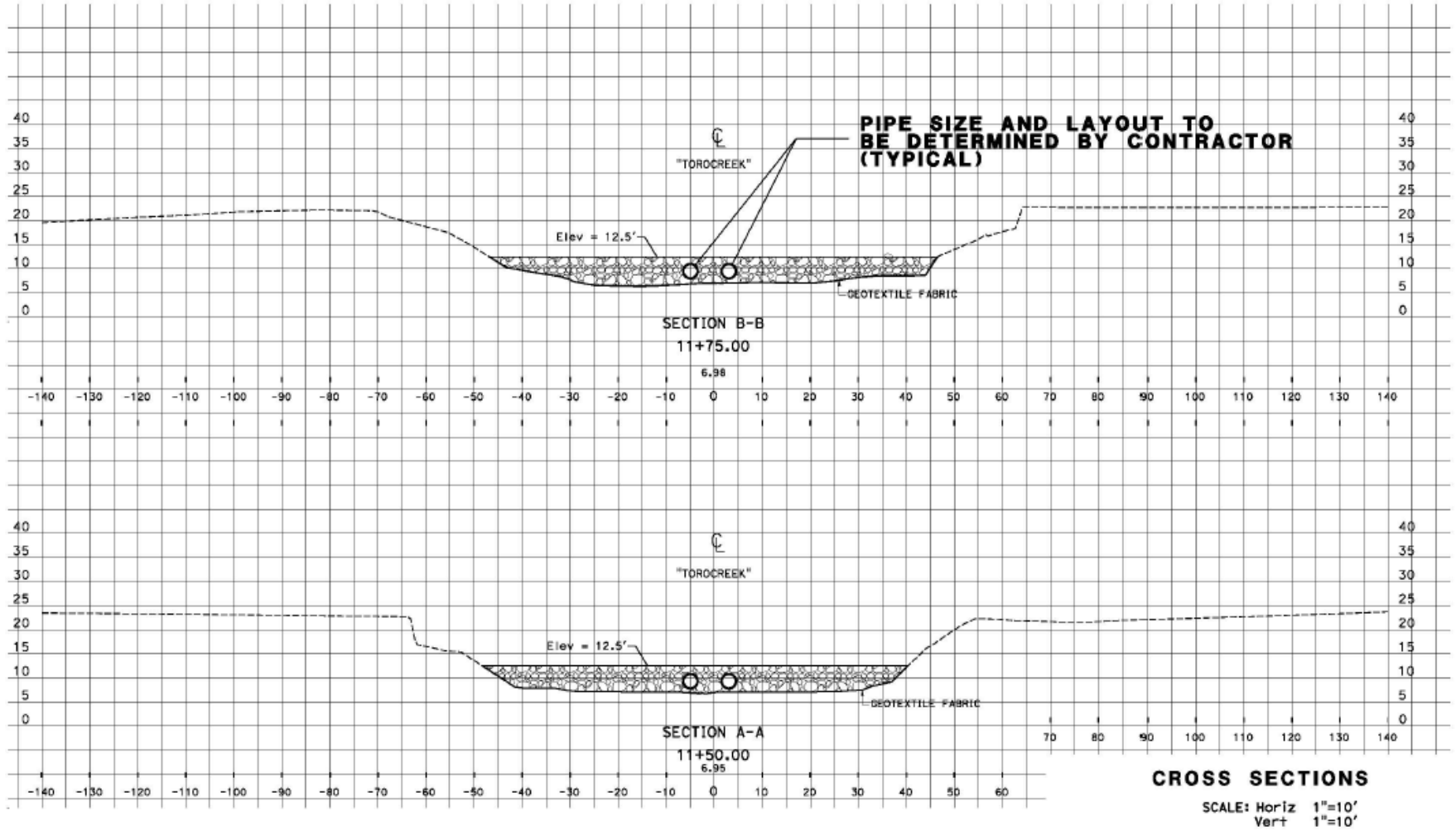
Dist	COUNTY	ROUTE	POST MILES TOTAL PROJECT	SHEET NO.	TOTAL SHEETS
05	SLO	1	32.6		

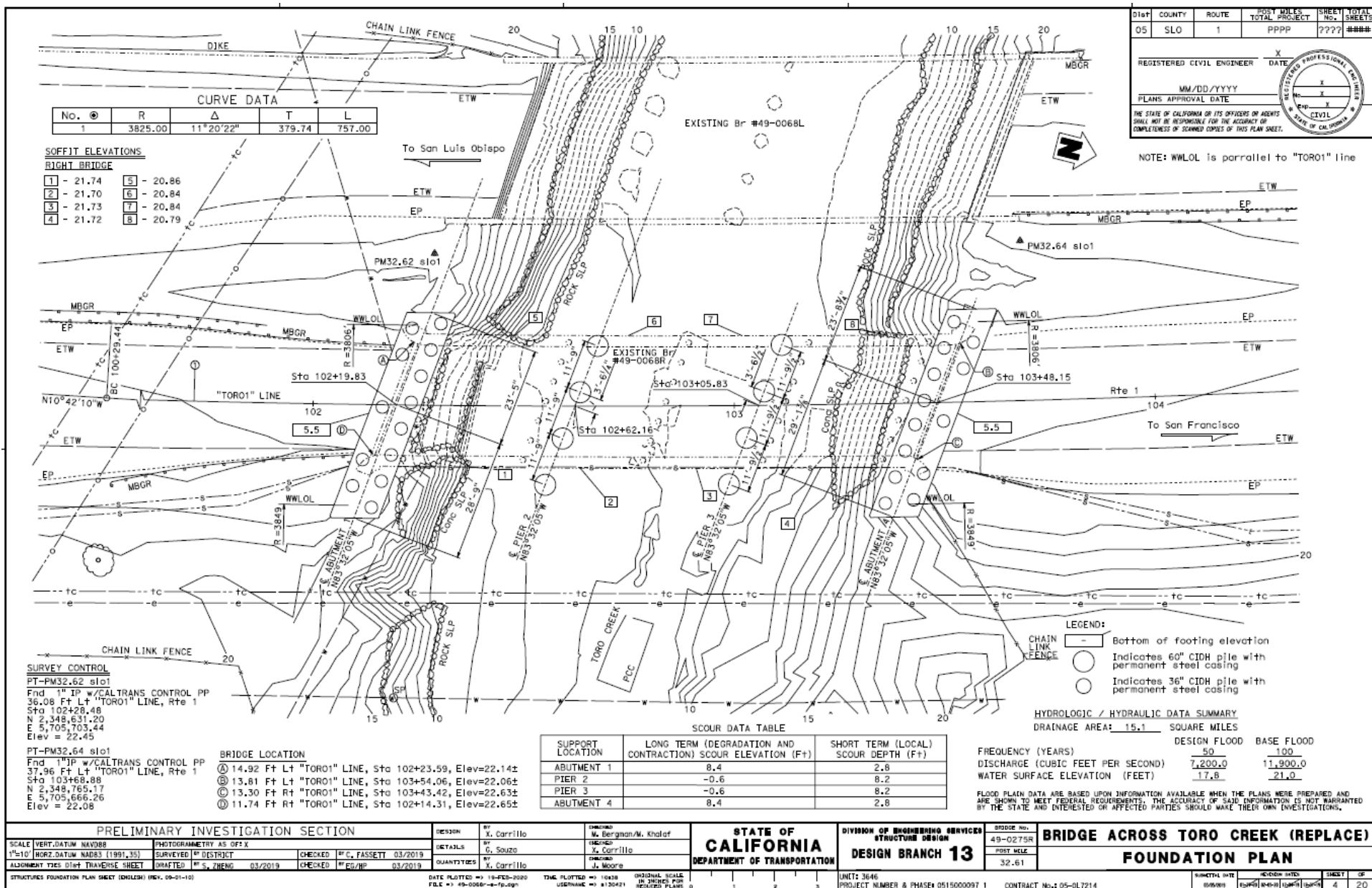
REGISTERED CIVIL ENGINEER DATE \_\_\_\_\_

PLANS APPROVAL DATE \_\_\_\_\_


THE STATE OF CALIFORNIA OR ITS OFFICERS OR AGENTS SHALL NOT BE RESPONSIBLE FOR THE ACCURACY OR COMPLETENESS OF SCANNED COPIES OF THIS PLAN SHEET.

REGISTERED PROFESSIONAL ENGINEER  
 No. \_\_\_\_\_  
 Exp. Date \_\_\_\_\_  
 CIVIL  
 State of California








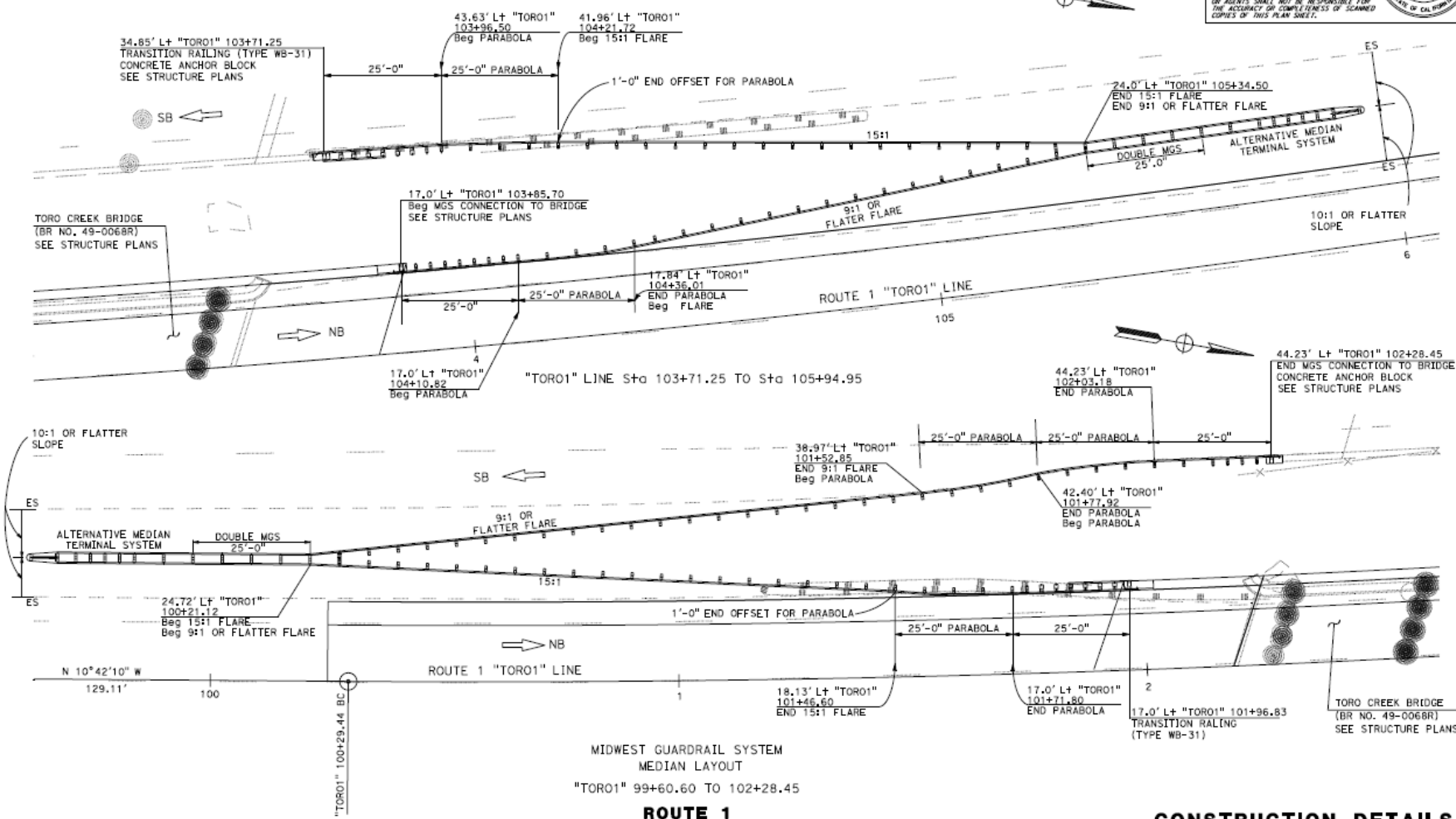
STATE OF CALIFORNIA - DEPARTMENT OF TRANSPORTATION 	FUNCTIONAL SUPERVISOR	REVISOR BY	
	MARTRESS L NISHIKAWA	MUSA AL-HANDANI	DATE REVISED
		CHECKED BY	

SEE STANDARD PLANS A77L1, A77L2, A77M1, A77N1, A77N2 AND A77R2 FOR DETAILS NOT SHOWN.

DIST	COUNTY	ROUTE	POST MILES TOTAL PROJECT	SHEET NO.	TOTAL SHEETS
05	SLO	1	32.60	XX	7

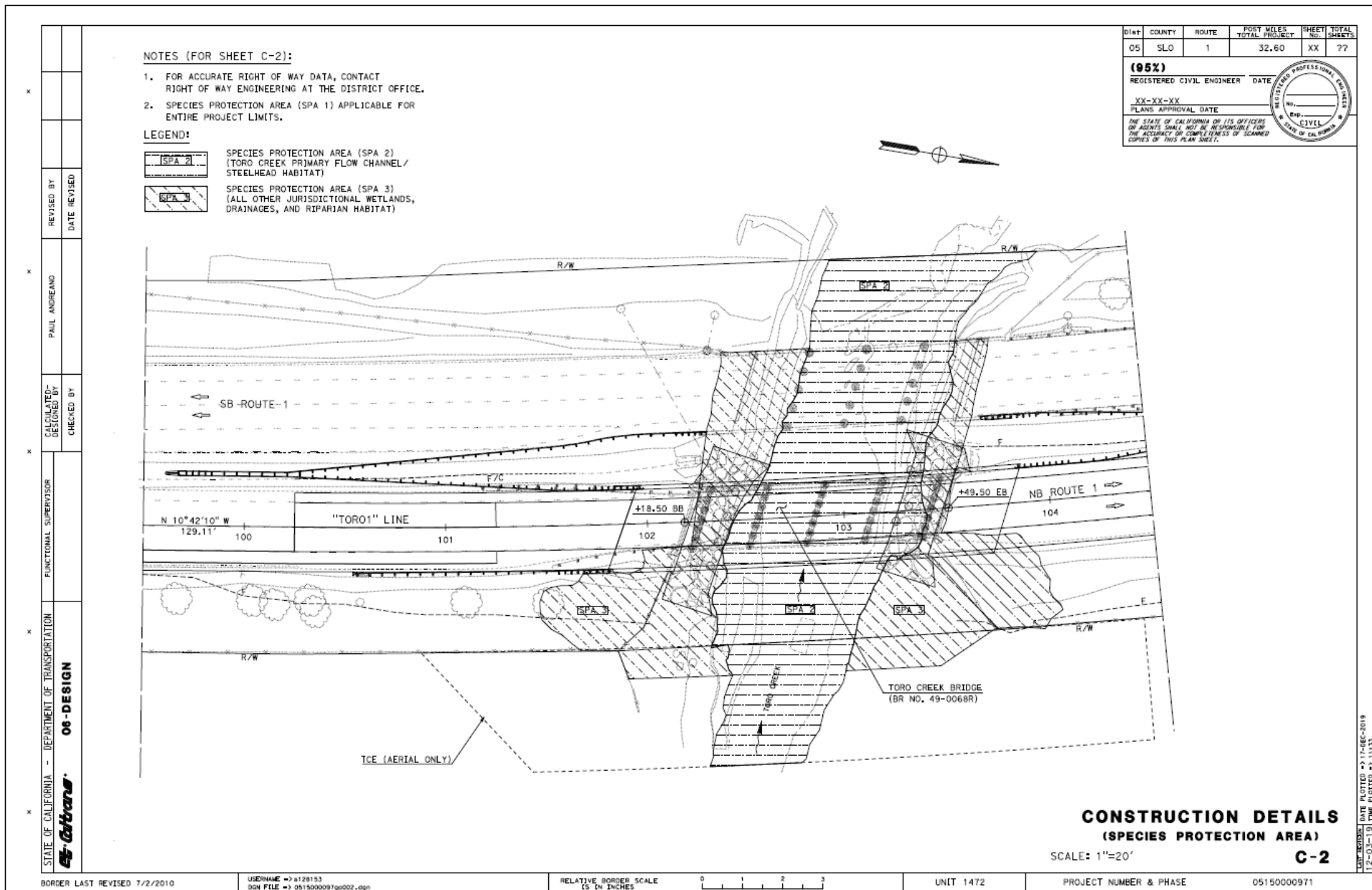
  

REGISTERED CIVIL ENGINEER	DATE	
XX-XX-XX		
PLANS APPROVAL DATE		
THE STATE OF CALIFORNIA ON ITS OFFICERS OR AGENTS SHALL NOT BE RESPONSIBLE FOR THE ACCURACY OR COMPLETENESS OF SCANNED COPIES OF THIS PLAN SHEET.		



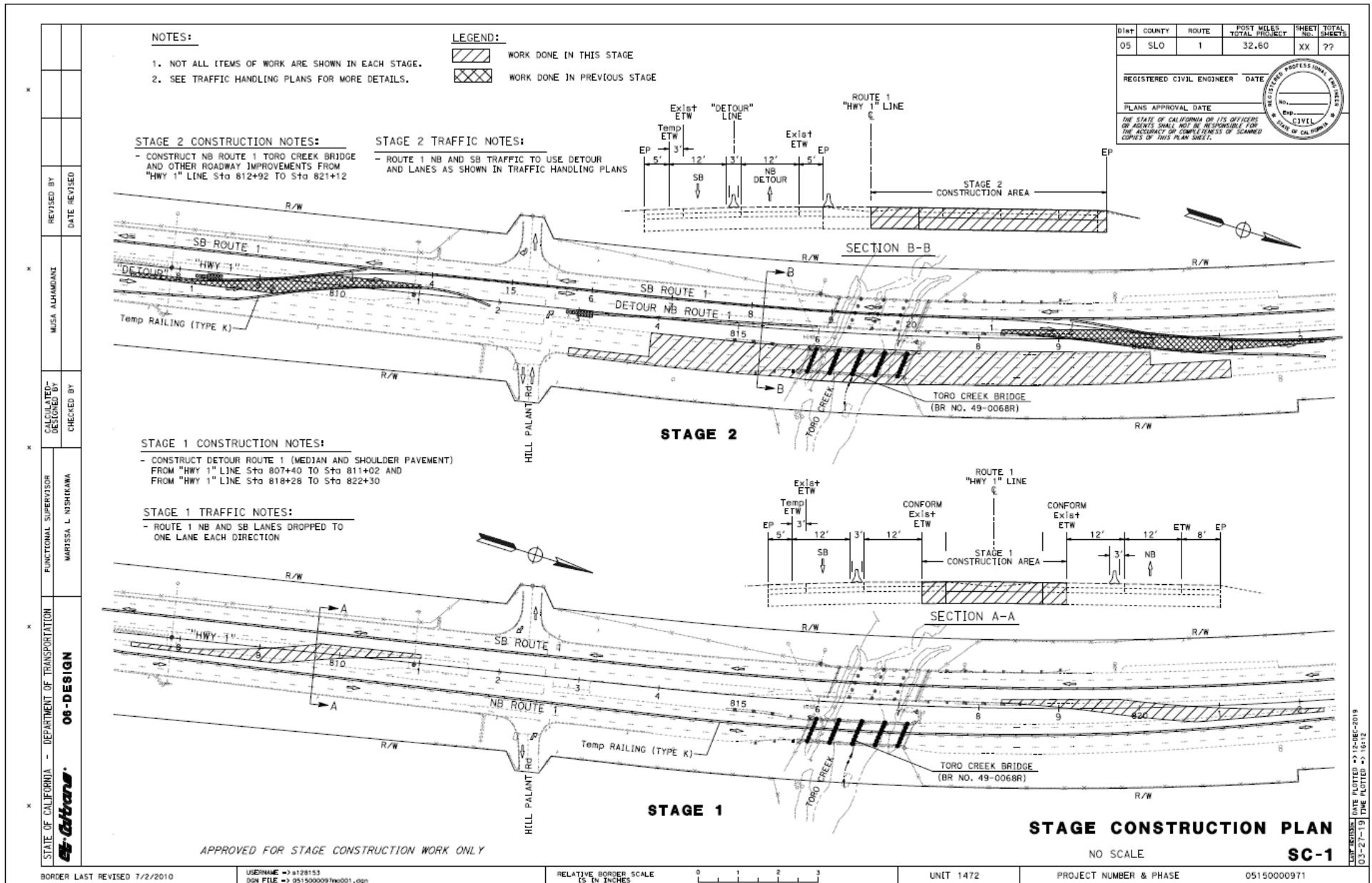
**CONSTRUCTION DETAILS**  
NO SCALE C-1

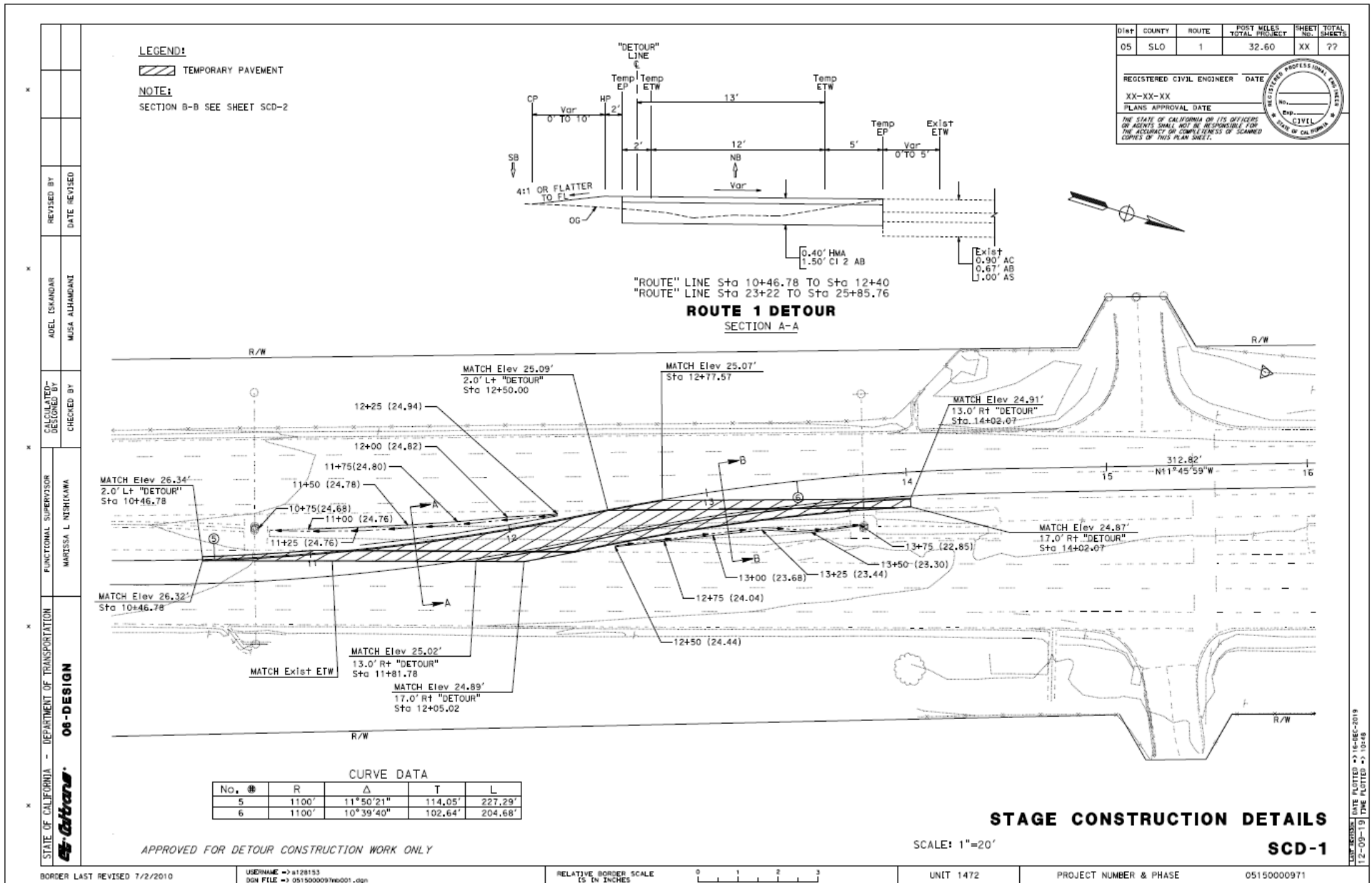
05150000971















# **POSITIVE LOCATION INFORMATION (METHOD POTHOLING) 2018**

No.	UTILITY	NORTHING	EASTING	ELEVATION	DEPTH	REMARKS
1	CAYUCOS SD	2348493.26	5705807.63	20.812	3.7'	
2	CAYUCOS SD	2348493.00	5705806.09	20.852	3.8'	
3	CAYUCOS SD	2348562.07	5705785.47	21.390	3.7'	
4	CAYUCOS SD	2348561.27	5705783.59	21.487	3.7'	
5	CAYUCOS SD	2348408.14	5705825.17	21.052	3.6'	
6	CAYUCOS SD	2348407.69	5705823.73	21.098	3.6'	
7	--	2348814.49	5705743.03	17.915	11.0'	NOTHING FOUND
8	--	2348814.15	5705741.61	18.107	11.0'	NOTHING FOUND
9	--	2348814.91	5705744.77	17.633	10.0'	NOTHING FOUND
10	SCG	2348373.37	5705816.29	23.260	4.2'	1/2" LINE
11	SCG	2348350.30	5705714.56	23.645	4.4'	3/4" LINE
12	SCG	2348433.99	5705688.53	21.363	5.0'	4" LINE
13	AT&T	2348367.65	5705845.82	21.218	4.0'	18" FROM FENCE
16	--	2348486.77	5705820.92	20.531	6.00'	13" FROM FENCE, NOT FOUND
17	UNKNOWN	2348369.21	5705852.16	21.116	6.40'	2" LINE TRANSVERSE
18	CHARTER	2348367.15	5705842.71	21.232	1.0'	1" LINE
20	PG&E	2348319.15	5705863.04	22.071	6.4'	
21	CHEVRON	2348517.56	5705793.90	21.999	7.6'	
22	CHEVRON	2348562.11	5705789.41	20.881	6.2'	
23	--	2348561.27	5705799.40	20.343	12.0'	NOTHING FOUND
24	CHEVRON	2348585.23	5705721.19	22.044	9.9'	
25	--	2348519.95	5705737.13	23.013	9.33'	NOTHING FOUND
26	--	2348568.26	5705725.06	22.306	6.00'	NOTHING FOUND
27	--	2348560.89	5705803.47	20.476	19.0'	NOTHING FOUND
28	--	2348490.61	5705818.47	21.065	9.83'	NOTHING FOUND
29	--	2348490.64	5705819.74	21.170	9.83'	NOTHING FOUND
30	--	2348490.77	5705821.24	21.106	9.83'	NOTHING FOUND
31	--	2348491.00	5705822.73	21.264	10.42'	NOTHING FOUND
32	--	2348906.40	5705717.13	19.542	9.60'	NOTHING FOUND
33	--	2348904.92	5705718.68	19.471	6.00'	NOTHING FOUND

## **NOTES: (THIS SHEET ONLY)**

- FOR ACCURATE RIGHT OF WAY DATA, CONTACT RIGHT OF WAY ENGINEERING AT THE DISTRICT OFFICE
- CHEVRON UTILITIES
  - A - 14" DIAMETER STEEL CASING FOR LOADING LINE 1, 8" CIRCULATION PIPELINE
  - B - 18" DIAMETER STEEL CASING FOR LOADING LINE 1, 12" CIRCULATION PIPELINE
  - C - 8" DIAMETER STEEL CASING FOR 2" Air Line/Telephone
  - D - 24" DIAMETER STEEL CASING FOR LOADING LINE 1, 18" PIPELINE
  - E - 30" DIAMETER STEEL CASING FOR LOADING LINE 2, 20" PIPELINE
  - F - 5' DIAMETER CONCRETE CULVERT FOR 8" OUTFALL PIPELINE (THE 5' CONCRETE PIPE HAS AN OPEN END)
- OTHER UTILITIES
  - G - 4" HIGH PRESSURE GAS LINE - SOUTHERN CALIFORNIA GAS (SCG)
  - H - 3/4" WATER LINE - CHEVRON
  - J - 2 - 12" DIAMETER SANITARY SEWER LINE - CAYUCOS SANITARY DISTRICT (CAYUCOS SD)
  - I - 1/2" TELEPHONE CABLE - AT&T / CHARTER CABLE
  - K - TELEPHONE / CABLE - AT&T / CHARTER CABLE
  - L - ELECTRICAL LINE - PG&E
  - N - CITY OF SAN LUIS OBISPO WATER LINE
  - R - 3/4" HIGH PRESSURE GAS LINE - SOUTHERN CALIFORNIA GAS (SCG)
- SOME POTHOLE SYMBOLS REMOVED FOR CLARITY. SEE TABLE FOR ACCURATE INFORMATION.

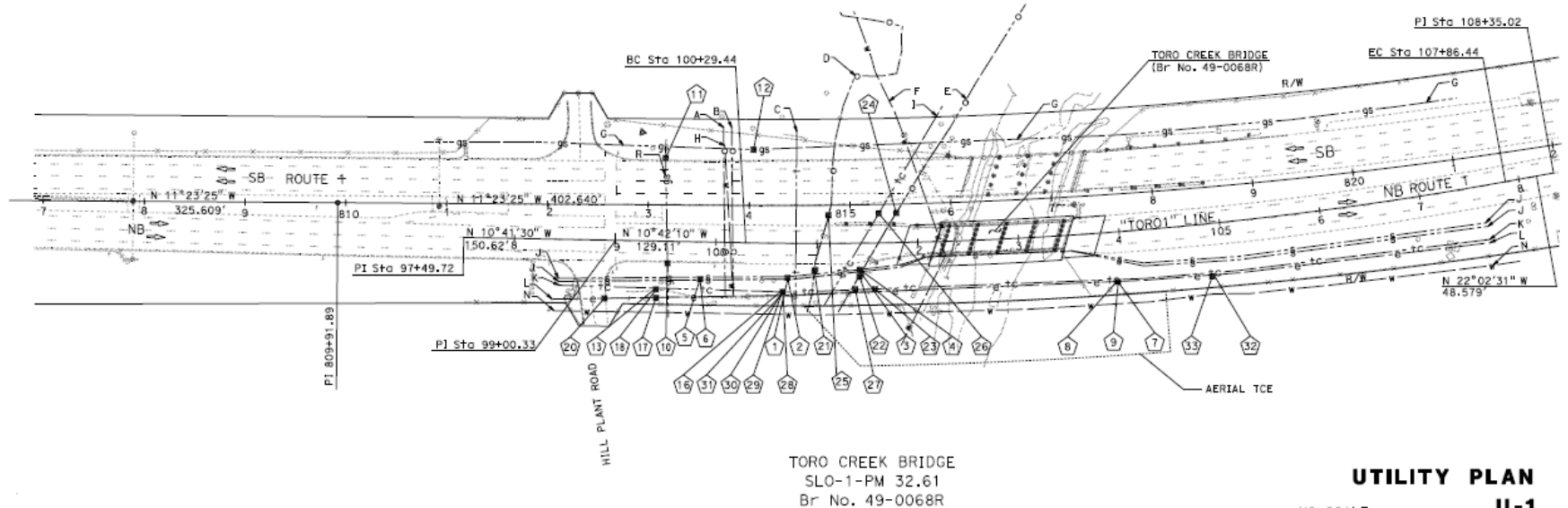
DIST	COUNTY	ROUTE	POST MILES TOTAL PROJECT	SHEET NO.	TOTAL SHEETS
05	SLO	1	32.6	XX	??

XX-XX-XX  
REGISTERED CIVIL ENGINEER DATE

PLANS APPROVAL DATE

THE STATE OF CALIFORNIA OR ITS OFFICERS OR AGENTS SHALL NOT BE RESPONSIBLE FOR THE ACCURACY OR COMPLETENESS OF SCANNED COPIES OF THIS PLAN SHEET.

REGISTERED PROFESSIONAL ENGINEER  
CIVIL  
STATE OF CALIFORNIA



THIS PLAN TO BE USED FOR UTILITY INFORMATION ONLY

BORDER LAST REVISED 7/2/2010

USERNAME => s128153  
DIN FILE => 051500097u001.dgn

RELATIVE BORDER SCALE  
IS IN INCHES

0 1 2 3

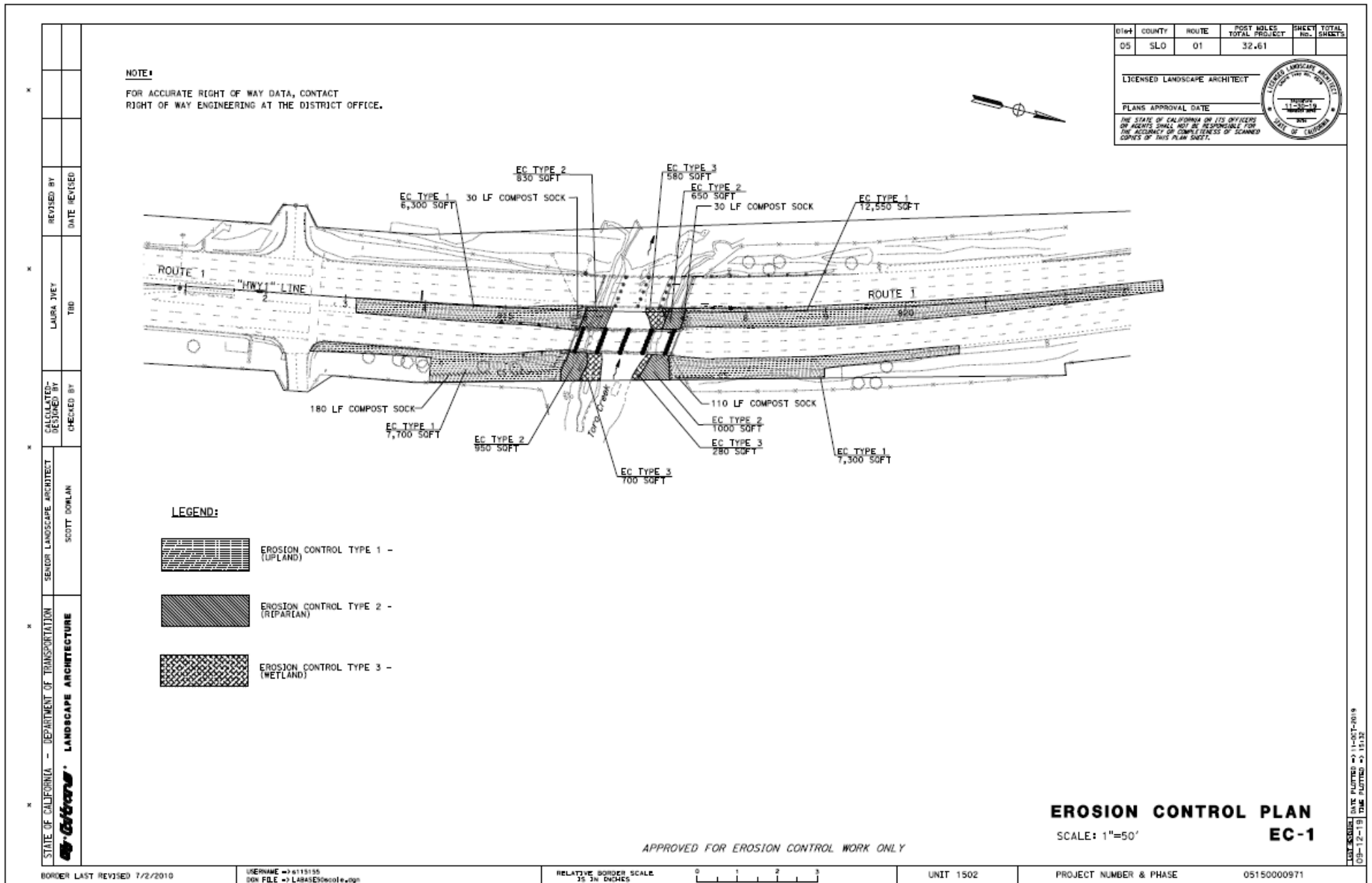
UNIT 1472

PROJECT NUMBER & PHASE

0515000971

DATE PLOTTED => 11-DEC-2019  
TIME PLOTTED => 11:24







**NOTES:**  
UNDERLINED PORTION OF BOTANICAL NAME INDICATE ABBREVIATION USED ON PLANTING PLAN.

**DRAFT**

DIST	COUNTY	ROUTE	POST MILES TOTAL PROJECT	SHEET NO.	TOTAL SHEETS
05	SLO	01	32.61		

LICENSED LANDSCAPE ARCHITECT

PLANS APPROVAL DATE: 11-06-19

THE STATE OF CALIFORNIA OR ITS OFFICERS OR AGENTS SHALL NOT BE RESPONSIBLE FOR THE ACCURACY OR COMPLETENESS OF SCANNED COPIES OF THIS PLAN SHEET.

**PLANT LEGEND**

PLANT GROUP (SIZE)	PLANT No.	SYMBOL	BOTANICAL NAME	COMMON NAME	HOLE SIZE		BASIN TYPE	PLANT AREA GROUP H SOFT	WOOD MULCH ②③	APPLICATION RATES				ON CENTER SPACING	MINIMUM PLANTING DISTANCE FROM:							REMARKS
					DIAMETER	DEPTH				BASIN	SOIL AMENDMENT ①⑤	ORGANIC FERTILIZER ①			ETW	EP	FENCE	WALL	PAVED DITCH	EARTH DITCH		
												PLT	PLT ESTB									
					INCH	INCH			CF	CF	OZ	OZ	ft	ft	ft	ft	ft	ft	ft			
A (No. 1)	1		<u>ARTEMISIA CALIFORNICA</u>	CALIFORNIA SAGEBRUSH	④	④	II		2.7	1.0	3	3			10	5	10	5	5	SHRUB		
	2		<u>BACCHARIS PILULARIS</u>	COYOTE BRUSH	④	④	II		2.7	1.0	3	3			10	5	10	5	5	SHRUB		
	3		<u>CUPRESSUS MACROCARPA</u>	MONTEREY CYPRESS	④	④	II		2.7	1.0	3	3		40	10	5	10	5	5	TREE		
	4		<u>HAZARDIA SQUARROSA</u>	SANTOOTH GOLDENBUSH	④	④	II		2.7	1.0	3	3			10	5	10	5	5	SHRUB		
	5		<u>SOLANUM DOUGLASII</u>	NIGHTSHADE	④	④	II		2.7	1.0	3	3			10	5	10	5	5	WETLAND ⑧		
	6		<u>SETROPUS MICROCARPUS</u>	SMALL FRUITED BULLRUSH	④	④	II	1,200	2.7	1.0	3	3			10	5	10	5	5	HERB		
	7		<u>TYPHA LATIFOLIA</u>	BROADLEAF CATTAIL	④	④	II	1,200	2.7	1.0	3	3			10	5	10	5	5	WETLAND ⑧		
H (CUTTING)	8		<u>RUBUS URSINUS</u>	BLACKBERRY	④	④	II	1,405					6						CUTTINGS ③⑥⑦⑧			
	9		<u>SALIX LASIOLEPIS</u>	ARROYO WILLOW	④	④	II	1,405					6						CUTTINGS ③⑥⑦⑧			
	10		<u>SALIX LASIOLEPIS</u>	ARROYO WILLOW	④	④	II	2,875					6						CUTTINGS IN RSP ③⑥⑦			

APPLICABLE WHERE CIRCLED

① QUANTITIES SHOWN ARE "PER PLANT" UNLESS OTHERWISE SHOWN AS SOFT OR SOYD APPLICATION RATES

② WOOD MULCH MUST BE WOOD CHIP

③ AS SHOWN ON PROJECT PLANS

④ SUFFICIENT TO RECEIVE ROOTBALL OR CUTTING

⑤ SOIL AMENDMENT MUST BE FINE COMPOST

⑥ SEE CUTTING DETAIL

⑦ SEE SPECIAL PROVISIONS

⑧ ALTERNATE AS SHOWN IN DETAIL

⑨ TREES TO BE 40 FT FROM ETW EXCEPT WHEN BEHIND GUARDRAIL

**PLANT LEGEND**  
**PL-1**

BORDER LAST REVISED 7/2/2010

USERNAME => k115155  
DIR FILE => 0515000097a001.dgn

RELATIVE BORDER SCALE  
35 CM INCHES

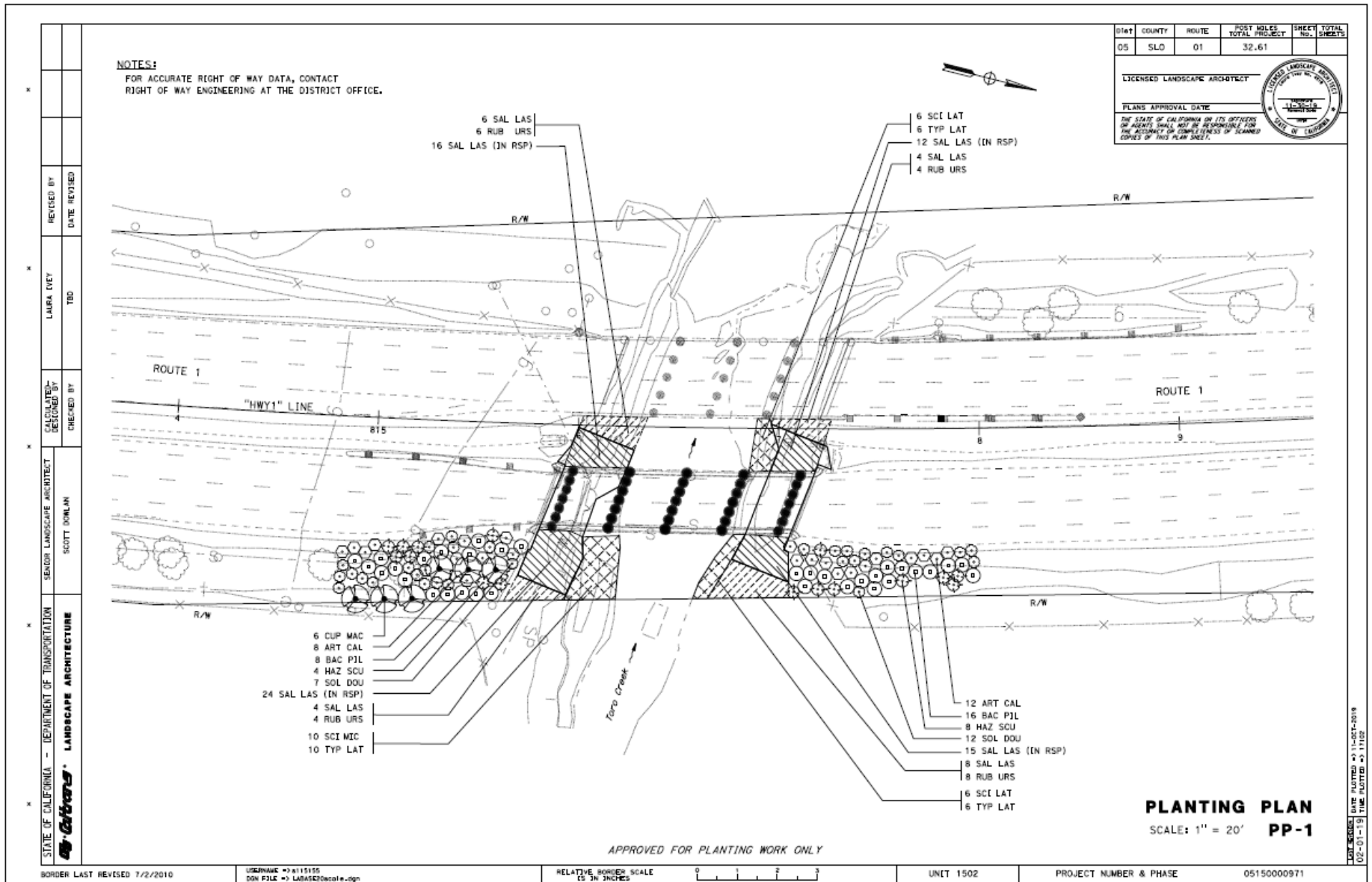
0 1 2 3

UNIT 1502

PROJECT NUMBER & PHASE

05150000971

DATE PLOTTED => 11-OCT-2019  
TIME PLOTTED => 10:28



PLANTING QUANTITIES		PLANT GROUP		PLANT BASIN		(N)	
BOTANICAL NAME	COMMON NAME	A	H	WOOD MULCH CY	SOIL AMENDMENT CY	ORGANIC FERTILIZER LB	TOPSOIL SLURRY CY
		EA	EA				
ARTEMISIA CALIFORNICA	CALIFORNIA SAGEBRUSH	20		1.3	0.5	2.5	
BACCHARIS PILULARIS	COYOTE BRUSH	20		1.3	0.5	2.5	
CUPRESSUS MACROCARPA	MONTEREY CYPRESS	6		0.3	0.1	0.6	
HAZARDIA SQUARROSA	SANTOOTH GOLDENBUSH	12		0.9	0.4	1.0	
RUBUS URSINUS	BLACKBERRY		22				
SALIX LASIOLEPIS	ARROYO WILLOW		22				
SALIX LASIOLEPIS (IN RSP)	ARROYO WILLOW		67				10.8
SCIRPUS MICROCARPUS	SMALL FRUITED BULLRUSH	22		1.1	0.4	1.2	
SOLANUM DOUGLASII	NIGHTSHADE	19			0.4	1.2	
TYPHA LATIFOLIA	BROADLEAF CATTAIL	22			0.4	1.2	
<b>TOTAL</b>		<b>121</b>	<b>111</b>	<b>-</b>	<b>-</b>	<b>-</b>	<b>-</b>

(N) NOT A SEPARATE BID ITEM

**SECTION A-A**

**WILLOW CUTTING IN TUBES THROUGH RSP**

NO SCALE

**PLAN**

**WILLOW/BLACKBERRY PLANTING**

NO SCALE

**PLAN**

**CATTAIL/BULLRUSH PLANTING**

NO SCALE

**PLANTING QUANTITIES**

**PQ-1**

BORDER LAST REVISED 7/2/2010

USERNAME: 231118155  
BOM FILE: 23115000097aw001.dgn

RELATIVE BORDER SCALE  
35 3/4 INCHES

UNIT 1502

PROJECT NUMBER & PHASE

05150000971

Sheet	COUNTY	ROUTE	POST MILES TOTAL PROJECT	SHEET NO.	TOTAL SHEETS
05	SLO	01	32.61		

LICENSED LANDSCAPE ARCHITECT

PLANS APPROVAL DATE

THE STATE OF CALIFORNIA ON ITS OFFICERS OR AGENTS SHALL NOT BE RESPONSIBLE FOR THE ACCURACY OR COMPLETENESS OF SCANNED COPIES OF THIS PLAN SHEET.

LANDSCAPE ARCHITECT

SCOTT DOWLAN

LANDSCAPE ARCHITECTURE

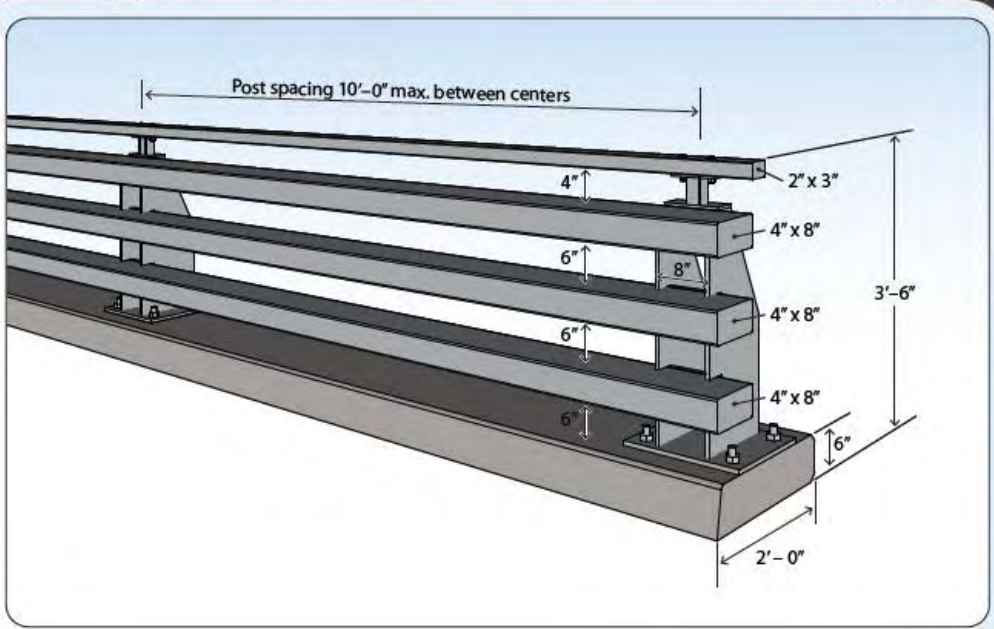
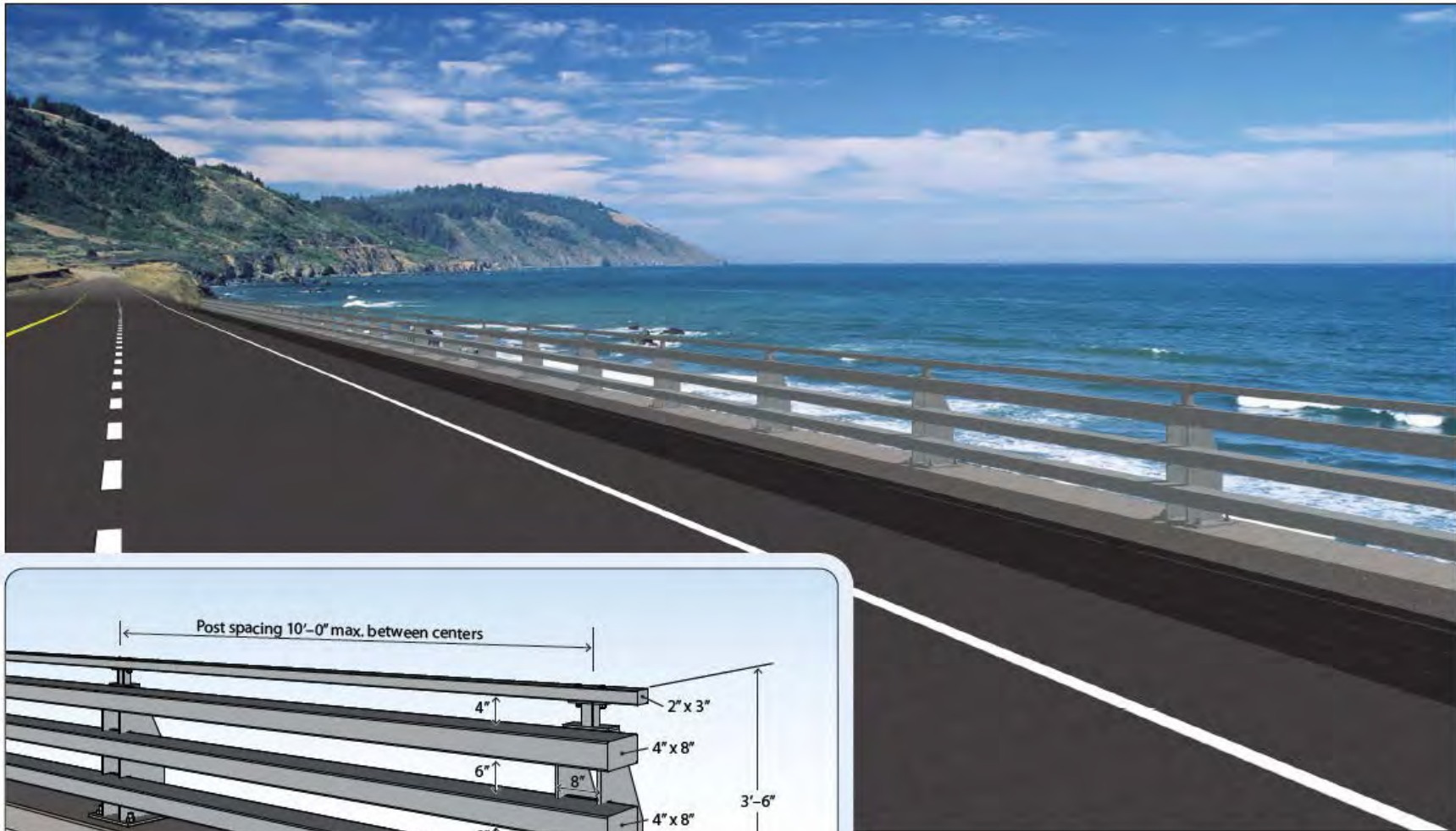
STATE OF CALIFORNIA - DEPARTMENT OF TRANSPORTATION

02-01-13

DATE PLOTTED: 11-OCT-2019

DRAWN BY: 23115000097aw001





## Proposed CA ST-75 Bridge Rail

