

CALIFORNIA COASTAL COMMISSION

45 FREMONT, SUITE 2000
SAN FRANCISCO, CA 94105-2219
VOICE (415) 904-5200
FAX (415) 904-5400



F11a

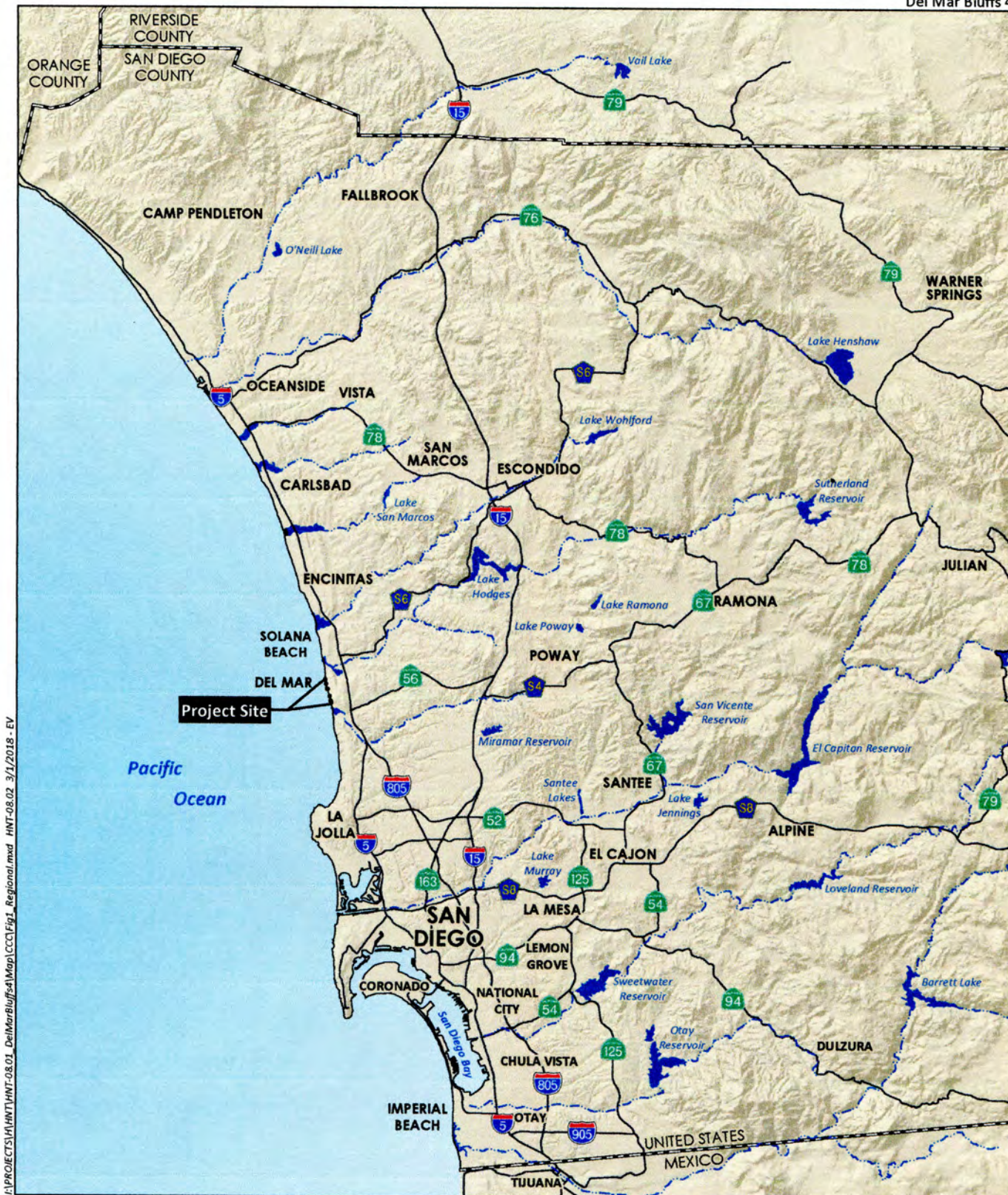
CC-0004-18 (SANDAG)

June 18, 2020

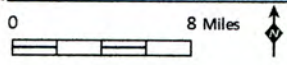
EXHIBITS

Table of Contents

- Exhibit 1 – Regional Map
- Exhibit 2 – Soldier Piles and Retaining Wall Plan
- Exhibit 3 – Bluff Failure and Retaining Wall Damage
- Exhibit 4 – Upper Bluff Slope Failure
- Exhibit 5 – Section View of Buttress Fill Repair



F:\PROJECTS\HNTV\HNT-08.01_DelMarBluffs4\Map\CCCI\Fig1_Regional.mxd HNT-08.02_3/1/2018 - EV



Source: Base Map Layers (SanGIS, 2016)



Regional Location

Figure 1

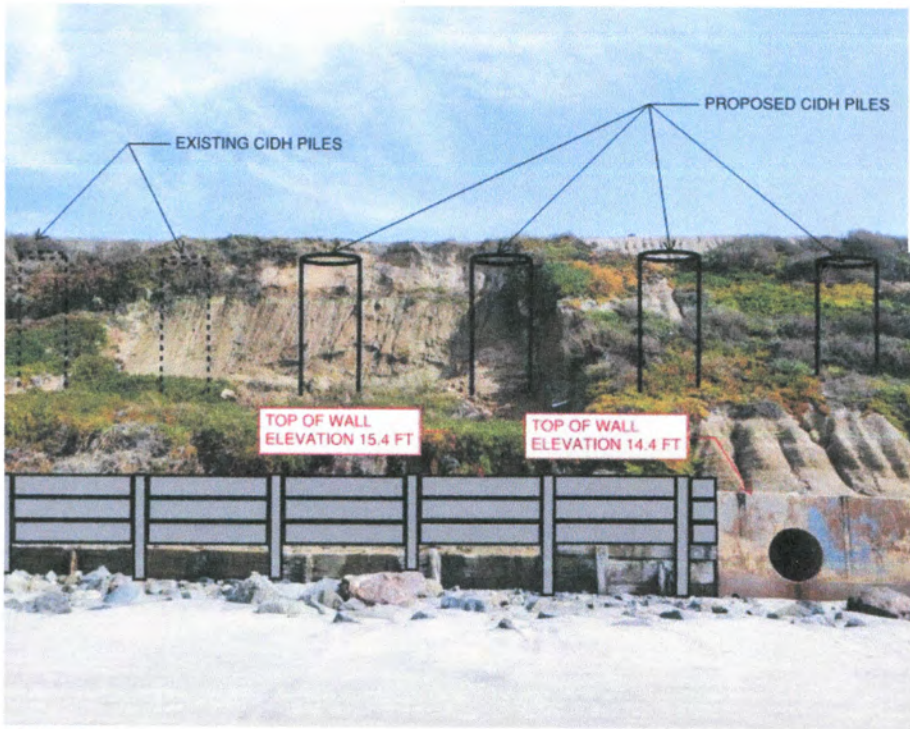


PHOTO #8

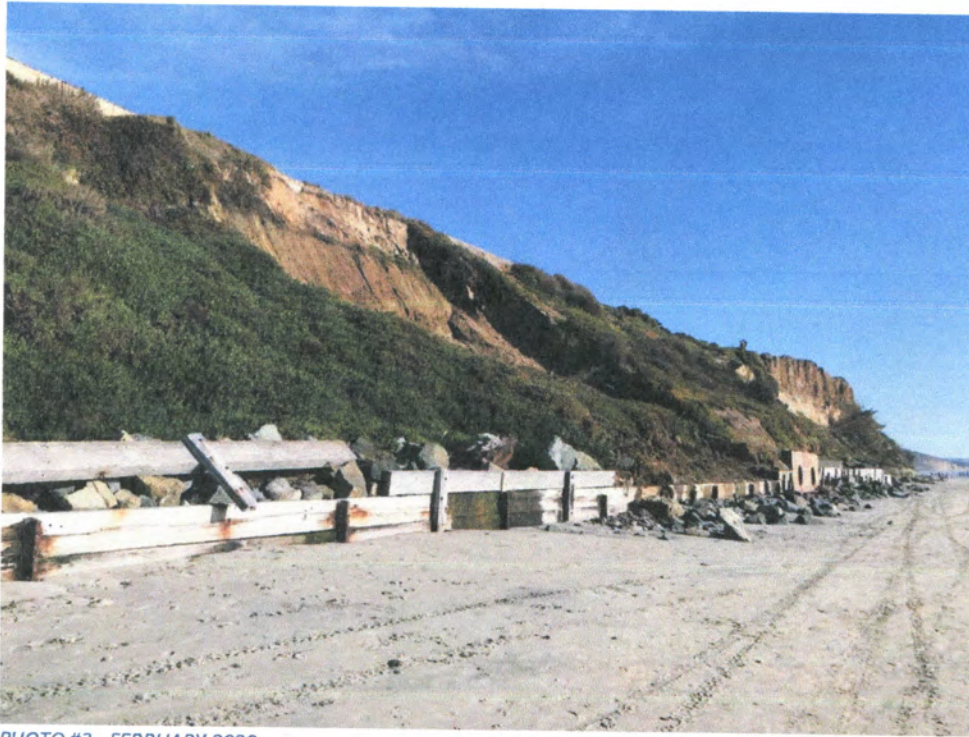


PHOTO #3 - FEBRUARY 2020



PHOTO #4 - APRIL 2020

3.1.3 REPAIR UPPER BLUFF SLOPE

Existing Condition

Storm water runoff has caused localized erosion and failures of the upper bluff just north of 7th Street. Two sections of the upper bluff measuring approximately 20 feet in width each have slid, resulting in soil and vegetation moved onto the track bed. One of the sections is shown in Figure 4 below. The upper edge of slope has cut father into the existing path that parallels the existing concrete drainage channel. The existing path has narrowed to less than 5 feet in width. Additional stabilization improvements will be required in this location to protect the track bed from debris and support the upper bluff channel and path.



Figure 4: Upper Bluff Slope Failure Below 7th Street

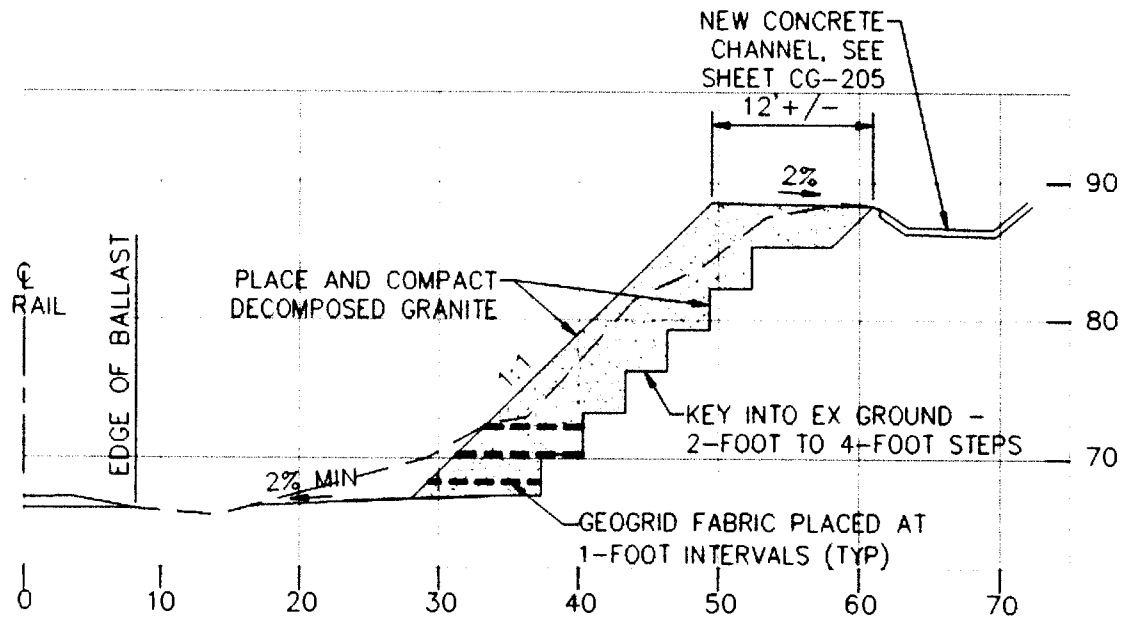


Figure 5: Typical Section of Decomposed Granite Buttress Fill Below 7th Street