

CALIFORNIA COASTAL COMMISSION

SAN DIEGO DISTRICT OFFICE
7575 METROPOLITAN DRIVE, SUITE 103
SAN DIEGO, CA 92108-4402
VOICE (619) 767-2370
FAX (619) 767-2384



W7d

6-20-0435 (SANTA FE CHRISTIAN SCHOOLS)

JANUARY 13, 2021

EXHIBITS

Table of Contents

EXHIBIT 1: Vicinity Map

EXHIBIT 2: Location Maps

EXHIBIT 3: Site Plan

EXHIBIT 4: Quad Building

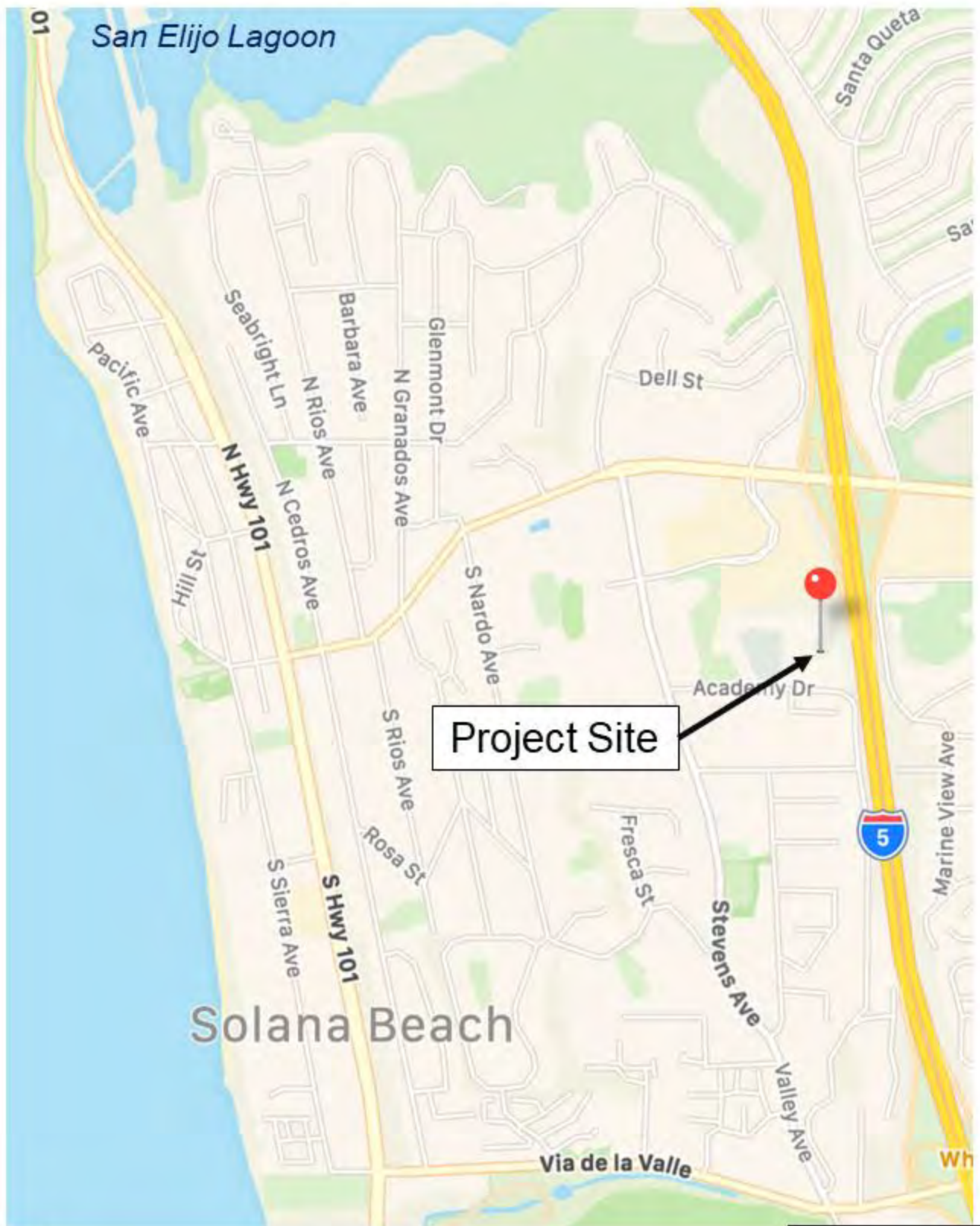


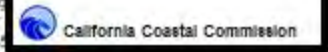
EXHIBIT NO. 1
APPLICATION NO. 6-20-0435
Vicinity Map
 California Coastal Commission

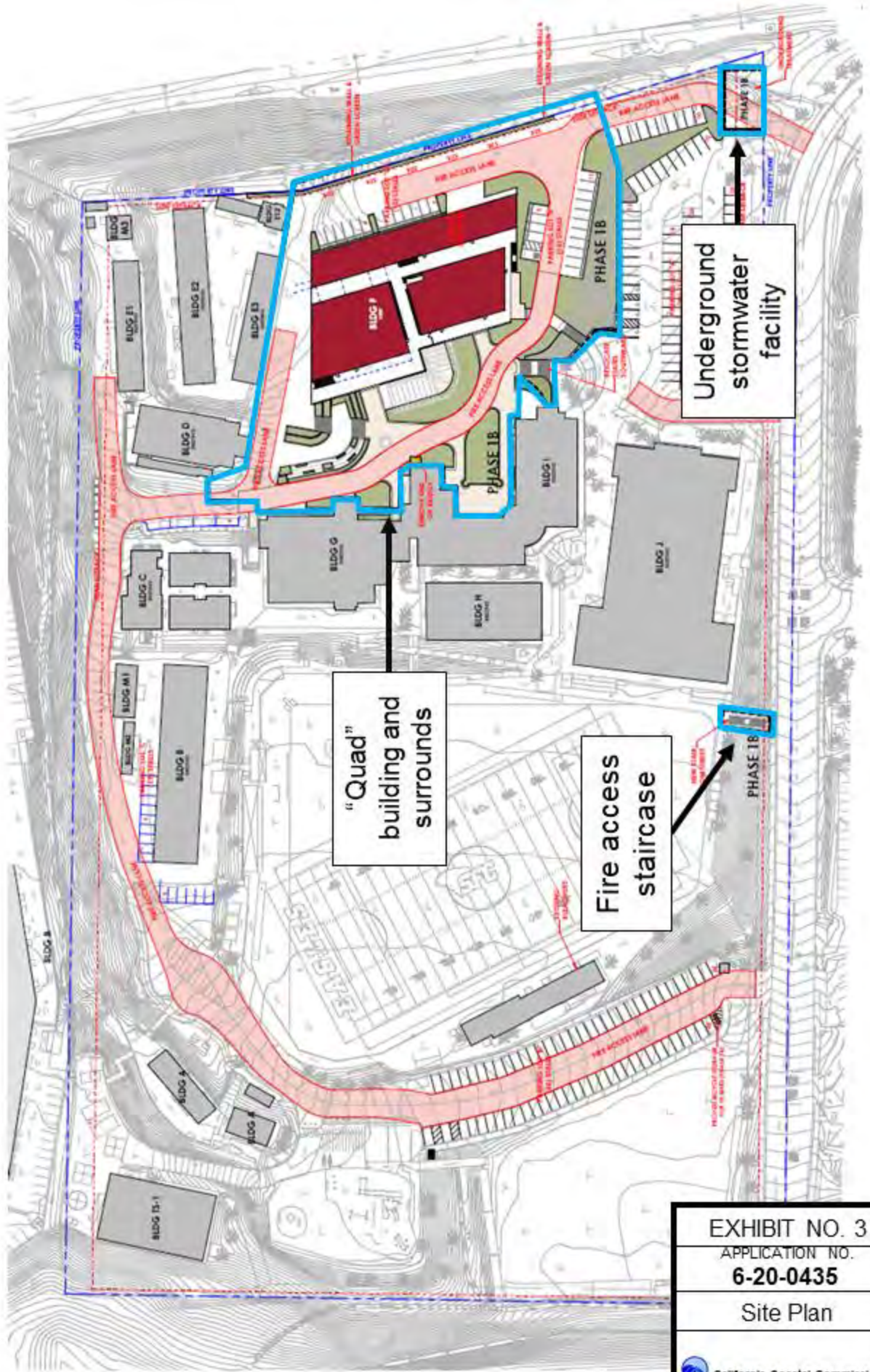


Project Site



EXHIBIT NO. 2
 APPLICATION NO.
6-20-0435
 Location Maps





“Quad”
building and
surrounds

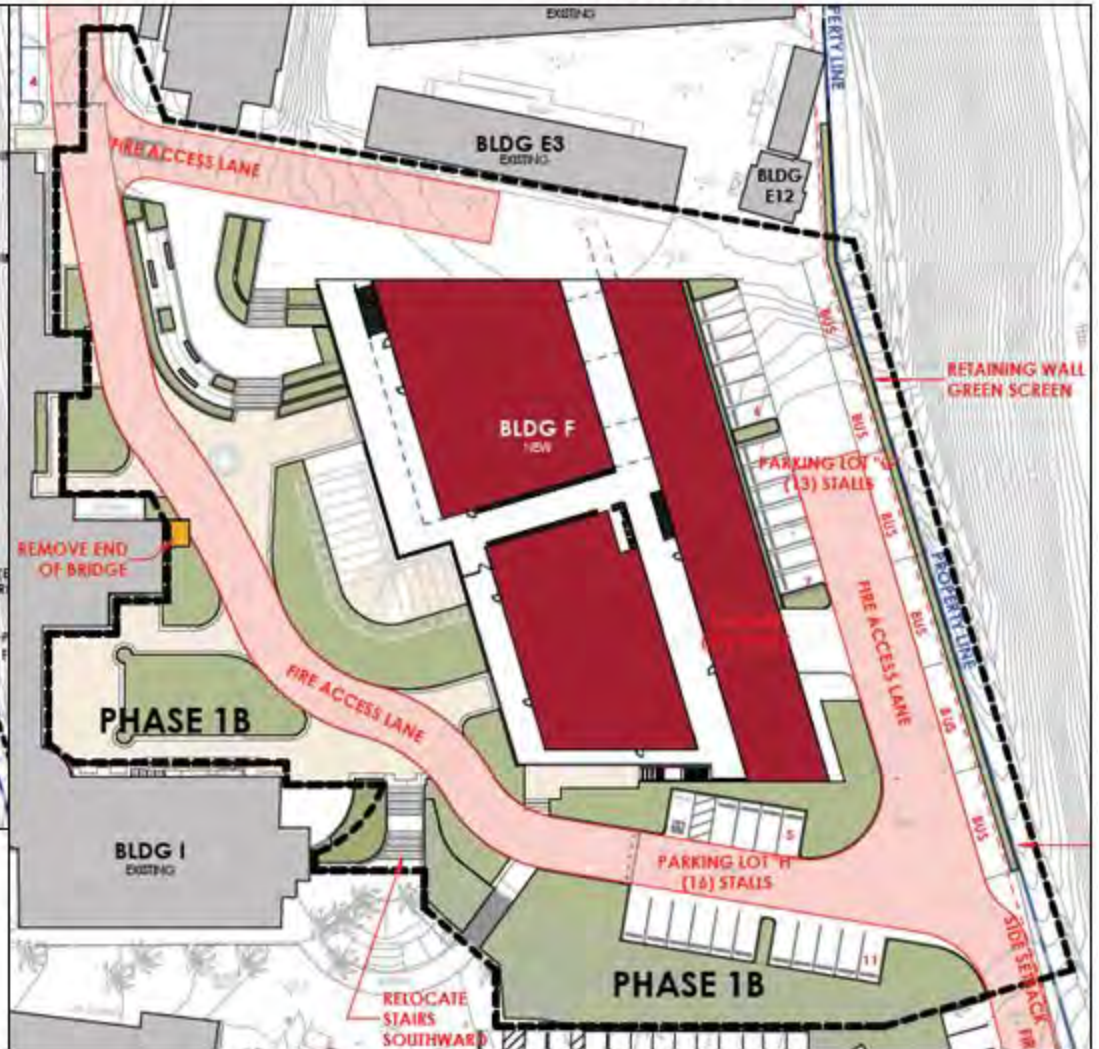
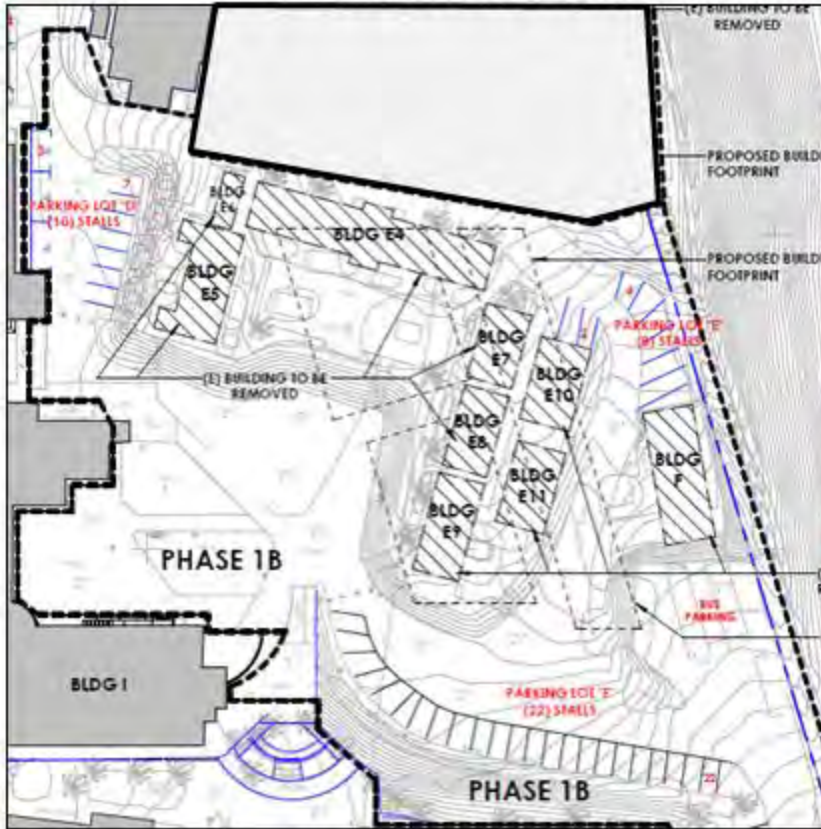
Fire access
staircase


Underground
stormwater
facility

EXHIBIT NO. 3
APPLICATION NO. 6-20-0435
Site Plan
 California Coastal Commission

Demolition Plan

Site Plan



 EXISTING BUILDINGS TO BE DEMOED

 California Coastal Commission	EXHIBIT NO. 4
	APPLICATION NO.
	6-20-0435
	Quad Building