

## CALIFORNIA COASTAL COMMISSION

455 MARKET STREET, SUITE 300  
SAN FRANCISCO, CA 94105-2219  
VOICE (415) 904-5200  
FAX (415) 904-5400  
[WWW.COASTAL.CA.GOV](http://WWW.COASTAL.CA.GOV)



# F11a

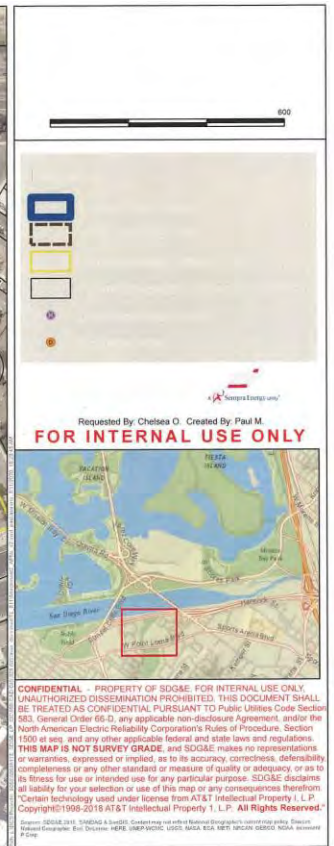
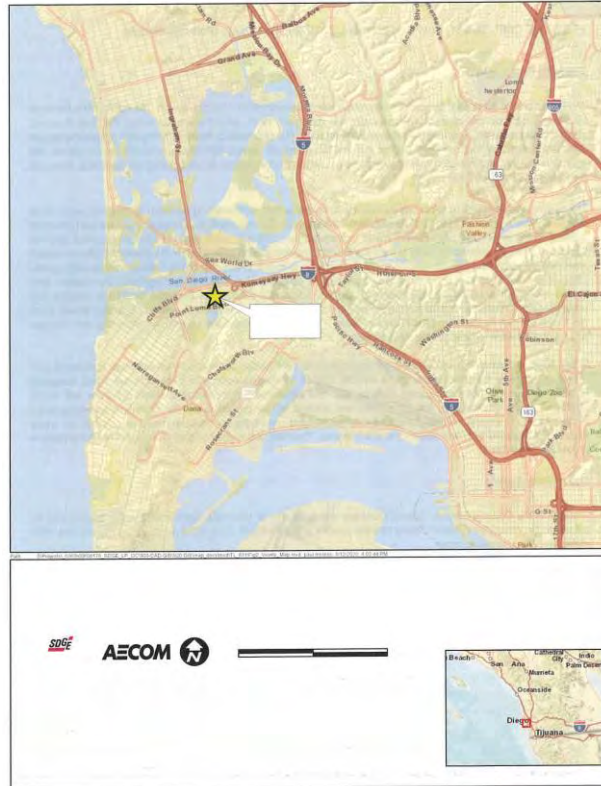
**6-20-0564 (SDG&E)**

**September 23, 2021**

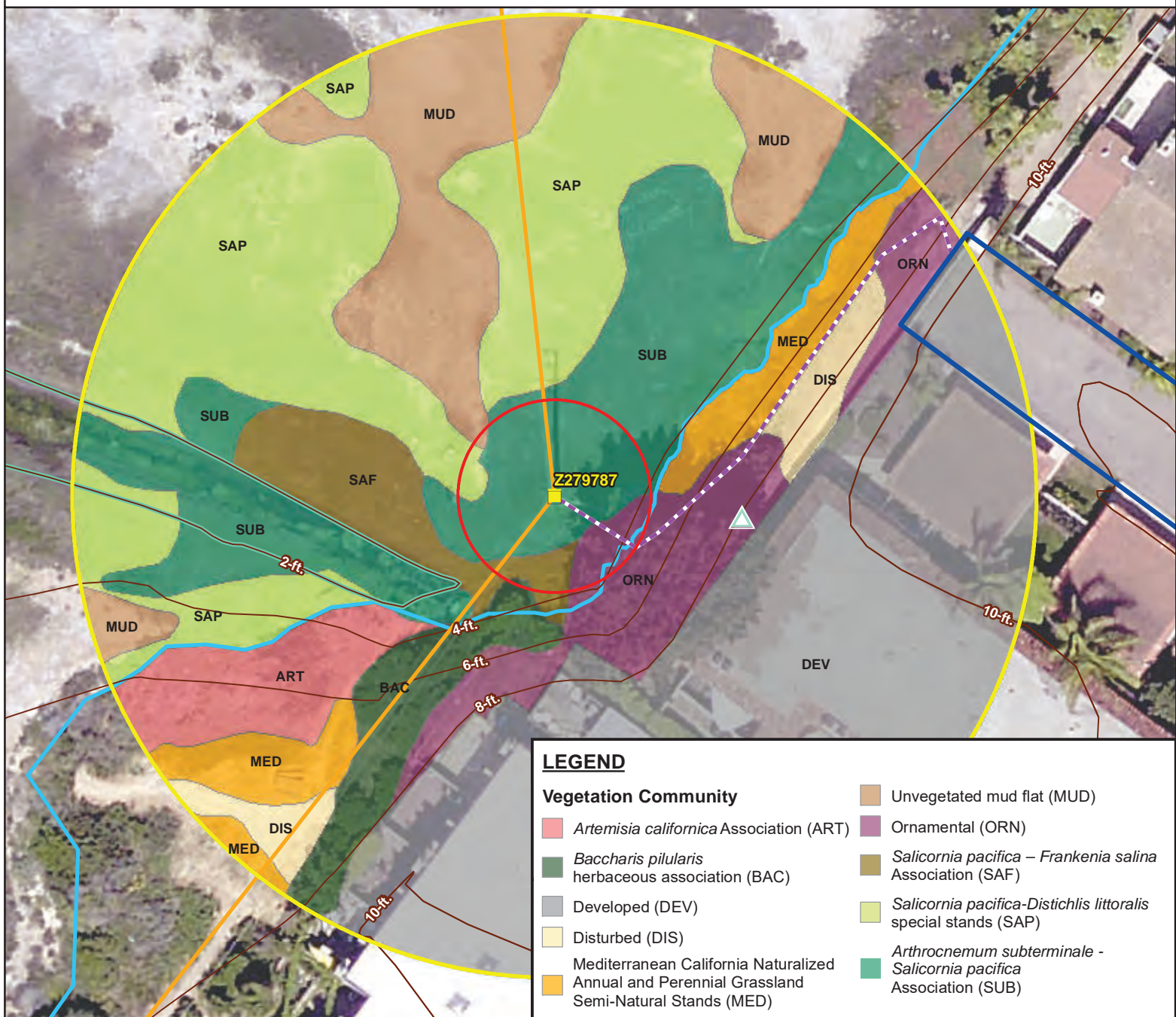
### **EXHIBITS**

- Exhibit 1 – Map of Project area
- Exhibit 2 – Vegetation Map
- Exhibit 3 – Photos of Project site
- Exhibit 4 – Mitigation Bank Locations

## Exhibit 1







Path to Document: \\na.aecomnet.com\lifs\AMER\SanDiego-USSDG\1\DCS\Projects\ 6062\60629221 SDGE EPM Bio\900-CAD-GIS\920 GIS\map\_docs\mxd\056 TM 37736 Veg Map\Map-Famosa\JD.mxd, AugelloP, 2/24/2021, 12:25:15 PM

## LEGEND

- Electric Pole
- Disturbance Area
- 100-ft Survey Area
- Staging Area
- Footpath
- Power Line
- 2-foot Elevation Contour
- Estimated Mean High Tide
- USACE/RWQCB Jurisdictional Wetland Boundary
- Anchor

## SDGE TL 611 Pole Z279787 Replacement Project

### Vegetation Map

### Figure 1

**SENSITIVE & CONFIDENTIAL, FOR INTERNAL USE ONLY, NOT FOR PUBLIC REVIEW - UNAUTHORIZED DUPLICATION PROHIBITED.** SDG&E is providing this map to you as a courtesy. SDG&E makes no representations or warranties, whether expressed or implied, as to the accuracy, correctness, defensibility, completeness or any other standard or measure of quality or adequacy or as to its use or intended use for any particular purpose. SDG&E disclaims all warranties, expressed or implied, including the warranty of fitness for a particular purpose. You are solely responsible for selecting this map to use and you are solely responsible for any consequences resulting from your use. Reproduction, duplication, or modification of this map is not allowed without written permission from SDG&E.

**Land Services GIS.**

Sources: SDG&E 2021; SANDAG & SanGIS, National Geographic, Esri, Garmin, HERE, UNEP-WCMC, USGS, NASA, ESA, METI, NRCAN, GEBCO, NOAA, increment P Corp.

Version Date:  
1/22/2021

Data Date:  
MM/DD/YYYY



**AECOM**



0 15 30 45 60  
Feet



Requested By: Requestor Name  
Created By: P. Augello



Attachment 2- Site Photographs

37736 CMP, TL 611, Pole Replacement, Z279787, San Diego (Famosa Slough)

Project Site



**Photo 1:** Northeast-facing view of existing Pole Z279787 within coastal salt marsh habitat.



**Photo 2:** Southwest-facing view of approximate new proposed location for the replacement Pole Z279787 (indicated by the arrow) within coastal salt marsh habitat.



**Photo 3:** West-facing view of the three anchors to be replaced within landscape/ornamental habitat.



**Photo 4:** East-facing view of the Project site showing the tributary to the Famosa Slough in the foreground with the culvert leading south and a portion of the footpath to the right of the culvert.



Attachment 2- Site Photographs  
37736 CMP, TL 611, Pole Replacement, Z279787, San Diego (Famosa Slough)

Access Option 1:



**Photo 5:** Southeast-facing view of the portion of the fence to be removed for foot access to Pole Z279787 and direction towards the Project site (indicated by the dashed line), as well as the slope below the fence consisting of disturbed habitat.



**Photo 6:** Southwest-facing view of proposed footpath to Pole Z279787 (indicated by the dashed line), within disturbed habitat.



**Photo 7:** Southwest-facing view of proposed foot access to Pole Z279787 (indicated by the dashed line), within disturbed habitat as seen from the approximate ingress location on the north side of the fence.

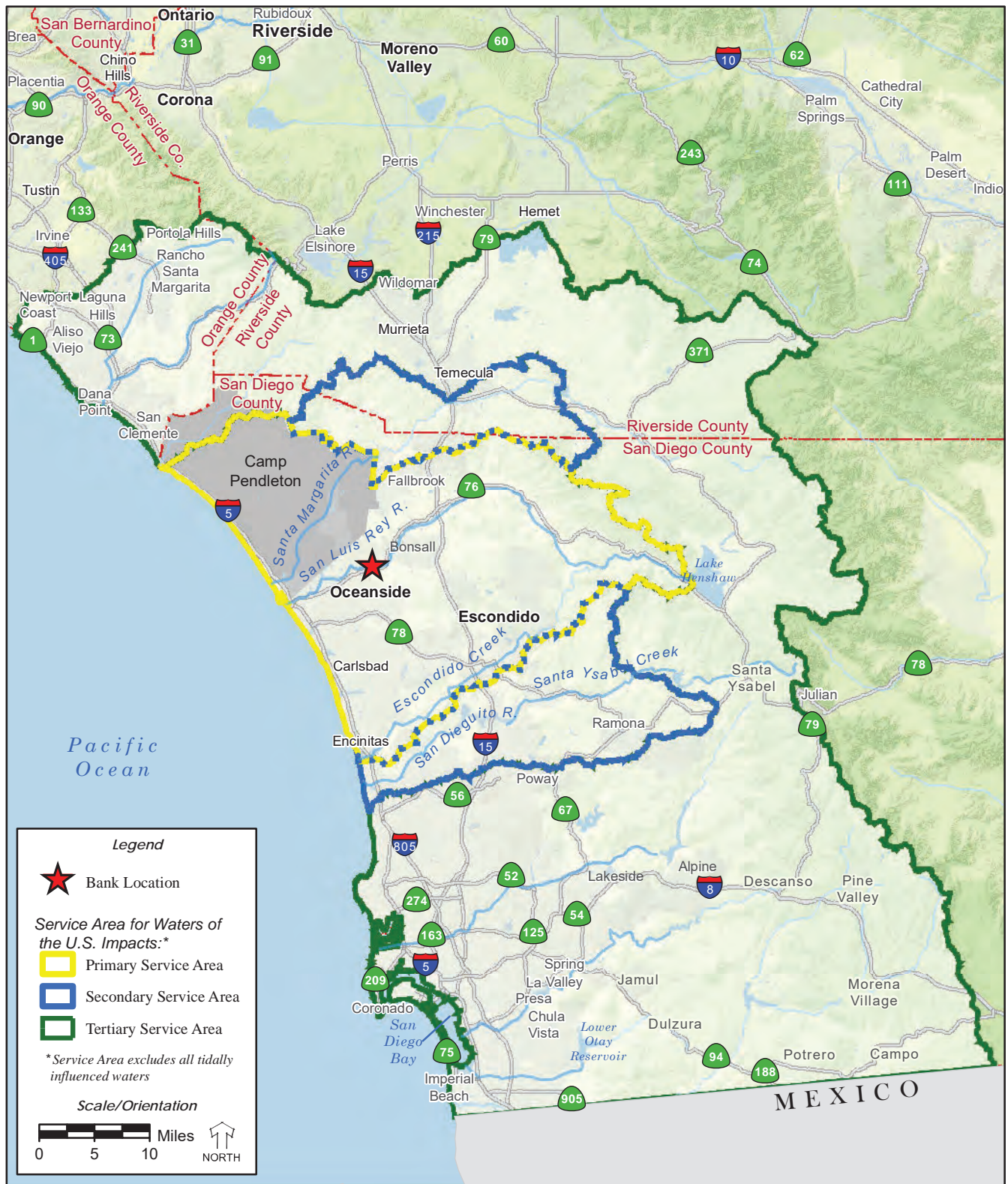


**Photo 8:** East-facing view of the foot access on the north side of the fence within disturbed habitat as viewed from Pole Z279787.

Rancho Jamul Mitigation Bank Location Map







## WILDLANDS

San Luis Rey Mitigation Bank  
Bank Enabling Instrument

Exhibit B-1a  
Service Area for Waters of the U.S. Impacts - Regional Context

