

CALIFORNIA COASTAL COMMISSION

455 MARKET STREET, SUITE 300
SAN FRANCISCO, CA 94105-2219
VOICE (415) 904-5200
FAX (415) 904-5400
WWW.COASTAL.CA.GOV



Th10a

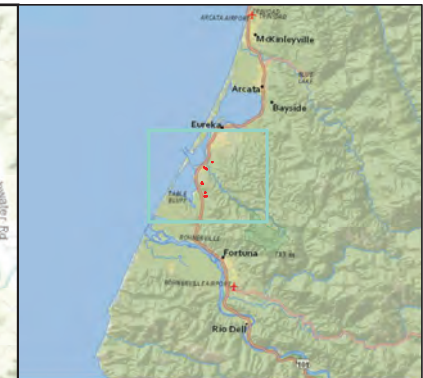
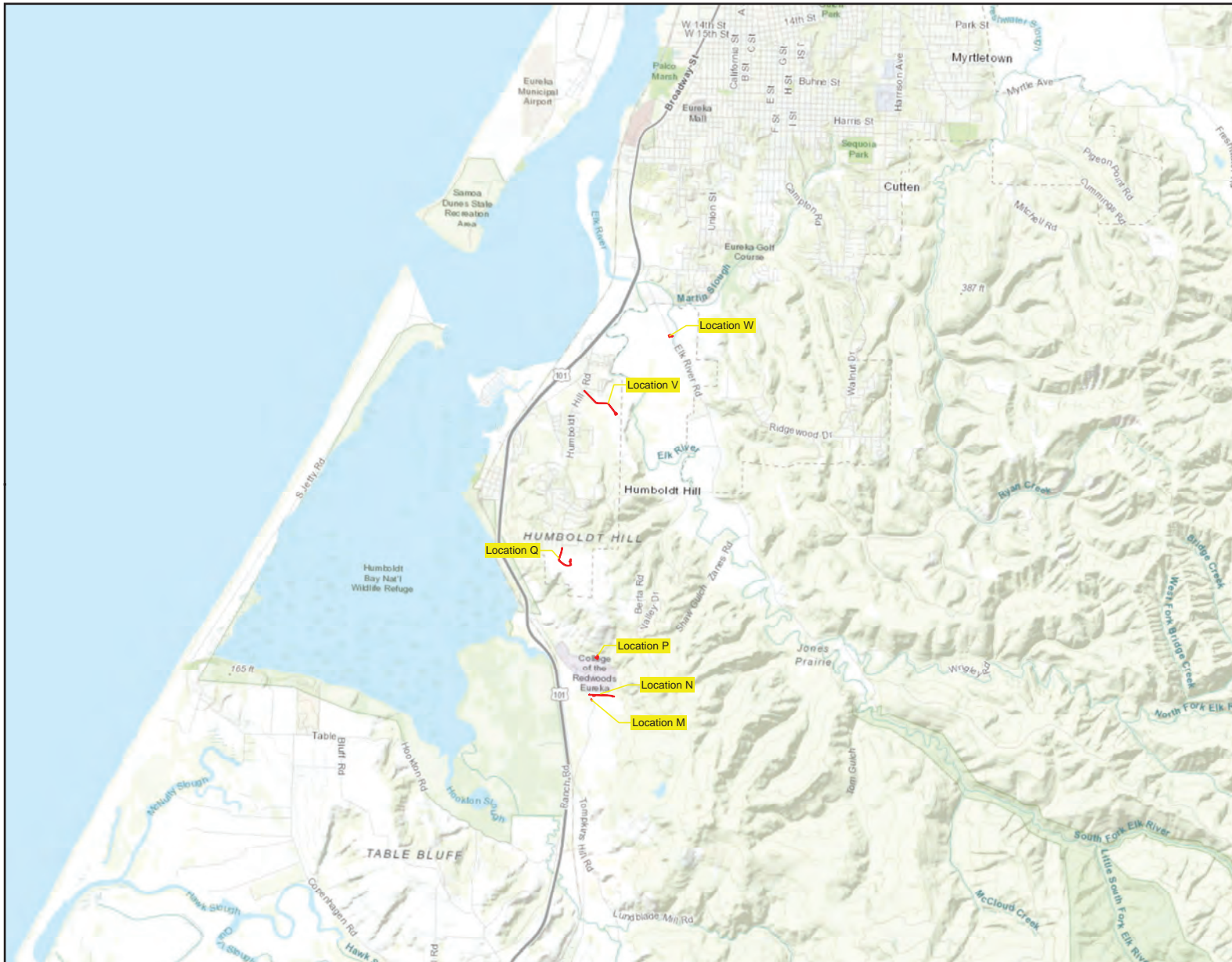
CDP Application No.: 9-21-0083 (PG&E)

October 28, 2021

EXHIBITS

- Exhibit 1 – Project Map and Locations
- Exhibit 2 – Applicant Proposed Mitigation Measures
- Exhibit 3 – Western Lily locations

Exhibit 1



Legend
 Workspace

Note:
 Service Layer Credits: Sources: Esri, HERE, Garmin, Intermap, increment P Corp., GEBCO, USGS, FAO, NPS, NRCAN, GeoBase, IGN, Kadaster NL, Ordnance Survey, Esri Japan, METI, Esri China (Hong Kong), (c) OpenStreetMap contributors, and the GIS User Community
 National Geographic, Esri, Garmin, HERE, UNEP-WCMC, USGS, NASA, ESA, METI, NRCAN, GEBCO, NOAA, increment P Corp..

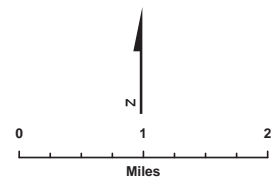


Figure 1
Project Location
 PG&E L-126B
 Humboldt County, CA

SECTION 5

Avoidance and Minimization Measures

PG&E has prepared a Multiple Region Operation and Maintenance Habitat Conservation Plan (MRHCP), a multiple species Habitat Conservation Plan (HCP) for routine operation and maintenance activities in the remainder of its service area not already covered by a HCP. The following AMMs have been developed from the MRHCP to minimize the potential for impacts to special-status species and sensitive habitats during construction.

5.1 MRHCP AMMs

Staff Responsible	Code	Description of Measure	Covered Species Benefiting from Measure	Rationale and Benefits of Measure
Field Protocols^a				
Training				
HCP Team	FP-01	Conduct annual training on habitat conservation plan requirements for employees and contractors performing covered activities in the Plan Area that are applicable to their job duties and work. Tailboard and site-specific training will also be conducted prior to commencing work.	All covered species	Education and awareness aimed at informing workers on HCP and protocols for avoiding and minimizing impacts on covered species and habitats.
Access and Work Site Management				
Field Crew	FP-02	Park vehicles and equipment on pavement, existing roads, or other disturbed or designated areas (barren, gravel, compacted dirt).	All covered species	Avoid direct mortality and disturbance of covered species and temporary disturbance and compaction of habitats.
Field Crew	FP-03	Use existing access and ROW roads. Minimize the development of new access and ROW roads, including clearing and blading for temporary vehicle access in areas of natural vegetation.	All covered species	Avoid direct mortality and disturbance of covered species and temporary disturbance and compaction of habitats.
Field Crew	FP-04	Route off-road access paths and site work sites to minimize impacts on plants, shrubs, and trees, small mammal burrows, and unique natural features (e.g., rock outcrops).	All covered species	Avoid direct mortality and disturbance of covered species and temporary disturbance and compaction of habitats.
HCP Team, Land Planners	FP-05	Notify conservation landowners at least 2 business days prior to conducting covered activities on protected lands (state- or federally owned wildlife areas, ecological reserves, or conservation areas); more notice will be provided if practicable or if required by other permits. If the work is an emergency, as defined in	All covered species	Courtesy notification to enter lands managed for the benefit of protected species and implementation of any site-specific measures to prevent impacts on species and habitats.

Staff Responsible	Code	Description of Measure	Covered Species Benefiting from Measure	Rationale and Benefits of Measure
		PG&E's Utility Procedure ENV-8003P-01, PG&E will notify the conservation land owner within 48 hours after initiating emergency work. Although this notification is intended only to inform conservation land owner, PG&E will attempt to work with the conservation land owner to address landowner concerns.		
Field Crew	FP-06	Minimize potential for covered species to become trapped, injured, or killed in pipes, culverts, or under materials or equipment. Inspect pipes and culverts wide enough to be entered by a covered species that could inhabit the area where pipes are stored for wildlife species prior to moving pipes and culverts. Contact a biologist if a covered species or other federally-listed species is suspected or discovered.	All covered amphibians, reptiles, and mammals	Avoid and minimize potential impacts on covered species that may move into work sites, work equipment, and supplies.
Field Crew	FP-07	Vehicle speeds on unpaved roads will not exceed 15 miles per hour.	All covered wildlife species	Avoid and minimize direct mortality or injury of covered species that may cross unpaved roads in work sites.
Field Crew	FP-08	Prohibit trash dumping, firearms, open fires (such as barbecues), hunting, and pets (except for safety in remote locations) at work sites.	All covered species	Discourage attracting and subsidizing predators such as foxes, coyotes, and raccoons that could prey upon covered species in a work site. Avoid potential species disturbances caused by fires and firearms.
Field Crew	FP-09	In designated State Responsibility Areas, equip all motorized equipment with federally or state-approved spark arrestors. Ensure a backpack pump filled with water and a shovel and fire-resistant mats and/or windscreens is onsite during welding. During fire "red flag" conditions as determined by the California Department of Forestry and Fire Protection, prohibit welding. Each fuel truck will carry a large fire extinguisher with a minimum rating of 40 B:C. Clear parking and storage areas of all flammable materials.	All covered species	Avoid ignition and spread of fire that could lead to mortality of individual species and loss of habitat.
Field Crew	FP-10	Minimize the covered activity footprint and minimize the amount of time spent at a work site to reduce the potential for take of species.	All covered species	Avoid and minimize all potential impacts on covered species and their habitats by reducing work footprint and work duration.

Staff Responsible	Code	Description of Measure	Covered Species Benefiting from Measure	Rationale and Benefits of Measure
Erosion Control				
Field Crew	FP-11	Utilize standard erosion and sediment control BMPs (pursuant to the most current version of PG&E's <i>Stormwater Field Manual for Construction Best Management Practices</i>) to prevent construction site runoff into waterways.	All covered aquatic species	Avoid and minimize potential water quality impacts, thereby maintaining water quality for covered aquatic species.
Field Crew	FP-12	Stockpile soil within established work site boundaries and locate stockpiles so as not to enter water bodies, stormwater inlets, other standing bodies of water. Cover stockpiled soil prior to precipitation events.	All covered species	Avoid and minimize potential water quality impacts, thereby maintaining water quality for covered aquatic species.
Natural Resource Protection				
Field Crew	FP-13	Fit open trenches or steep-walled holes with escape ramps of plywood boards or sloped earthen ramps at each end if left open overnight. Field crews will search open trenches or steep-walled holes every morning prior to initiating daily activities to ensure wildlife is not trapped. Field crews will not handle covered species. If any covered wildlife species is found, work will stop and a biologist will be notified. A biologist with appropriate take permits will relocate the species to adjacent habitat or the species will be allowed to naturally disperse, as determined by a biologist.	Covered amphibians, reptiles, and mammals	Avoid and minimize potential for species entrapment or entombment; provide avenue for species escape.
Land Planner or Biologist, and Field Crew	FP-14	If the covered activity disturbs 0.1 acre or more of habitat for a covered species in grasslands, the field crew will revegetate the area with a commercial "weed free" seed mix.	All covered grassland species	Avoid and minimize potential erosion and water quality impacts. Reduce the potential for colonization of grassland by invasive or weedy plants and grasses.
Field Crew	FP-15	Prohibit vehicular and equipment refueling within 250 feet of the edge of wetlands, streams, or waterways. If refueling must be conducted closer to wetlands, construct a secondary containment area subject to review by an environmental field specialist and/or biologist. Maintain spill prevention and cleanup equipment in refueling areas.	Vernal pool species, California red-legged frog, mountain yellow-legged frog, Sierra Nevada yellow-legged frog, foothill yellow-legged frog, Yosemite toad, Santa Cruz long-toed salamander, California tiger salamander, giant garter snake	Avoid and minimize potential for fuels contamination of aquatic habitats and mortality of aquatic species.

Staff Responsible	Code	Description of Measure	Covered Species Benefiting from Measure	Rationale and Benefits of Measure
Field Protocols				
<i>Natural Resource Protection (continued)</i>				
Biologist (provide guidance) and Field Crew (follow guidance)	FP-16	Maintain a buffer of 250 feet from the edge of wetlands, ponds, or riparian areas. If maintaining the buffer is not practicable because the covered activity footprint is within the buffered area, other measures as prescribed by the biologist or the HCP administrator to minimize impacts such as flagging access routes or paths, requiring foot access, restricting work until the dry season, or requiring a biological monitor during the activity.	Vernal pool species, California red-legged frog, mountain yellow-legged frog, Sierra Nevada yellow-legged frog, foothill yellow-legged frog, Yosemite toad, California tiger salamander, giant garter snake, Santa Cruz long-toed salamander	Avoid and minimize potential impacts on covered species and habitats by maintaining habitat buffers. Where buffers are not practicable to implement, require crews to minimize impacts in these areas.
Field Crew	FP-17	Directionally fall trees away from an exclusion zone, if an exclusion zone has been defined. If this is not practicable, remove the tree in sections. Avoid damage to adjacent trees to the extent practicable. Avoid removal of snags and conifers with basal hollows, crown deformities, and/or limbs more than 6 inches in diameter.	All covered species	Avoid and minimize potential impacts on covered species that may be seeking refuge in exclusion zones; preserve important tree habitat features for wildlife species.
Biologist and Field Crew	FP-18	Nests with eggs and/or chicks will be avoided: contact a biologist or the Avian Protection Program Manager for further guidance. Work will be stopped until the crew can obtain clarification from a biologist or the Avian Protection Program Manager on how to proceed.	All nesting bird species, including marbled murrelet and northern spotted owl	Avoid and minimize potential impacts and disturbance on nesting birds.

5.2 Location Specific AMM

In addition to the MRHCP AMMs outlined above, the following location specific AMM would also be implemented as part of project activities:

Locations M, N, Q, V, and W Topsoil Stockpiling. The top 6 to 12 inches of topsoil from the excavation locations will be stripped and stockpiled separately for reuse during post construction restoration.

Exhibit 3

