

## CALIFORNIA COASTAL COMMISSION

455 MARKET STREET, SUITE 300  
SAN FRANCISCO, CA 94105-2219  
VOICE (415) 904-5200  
FAX (415) 904-5400  
[WWW.COASTAL.CA.GOV](http://WWW.COASTAL.CA.GOV)



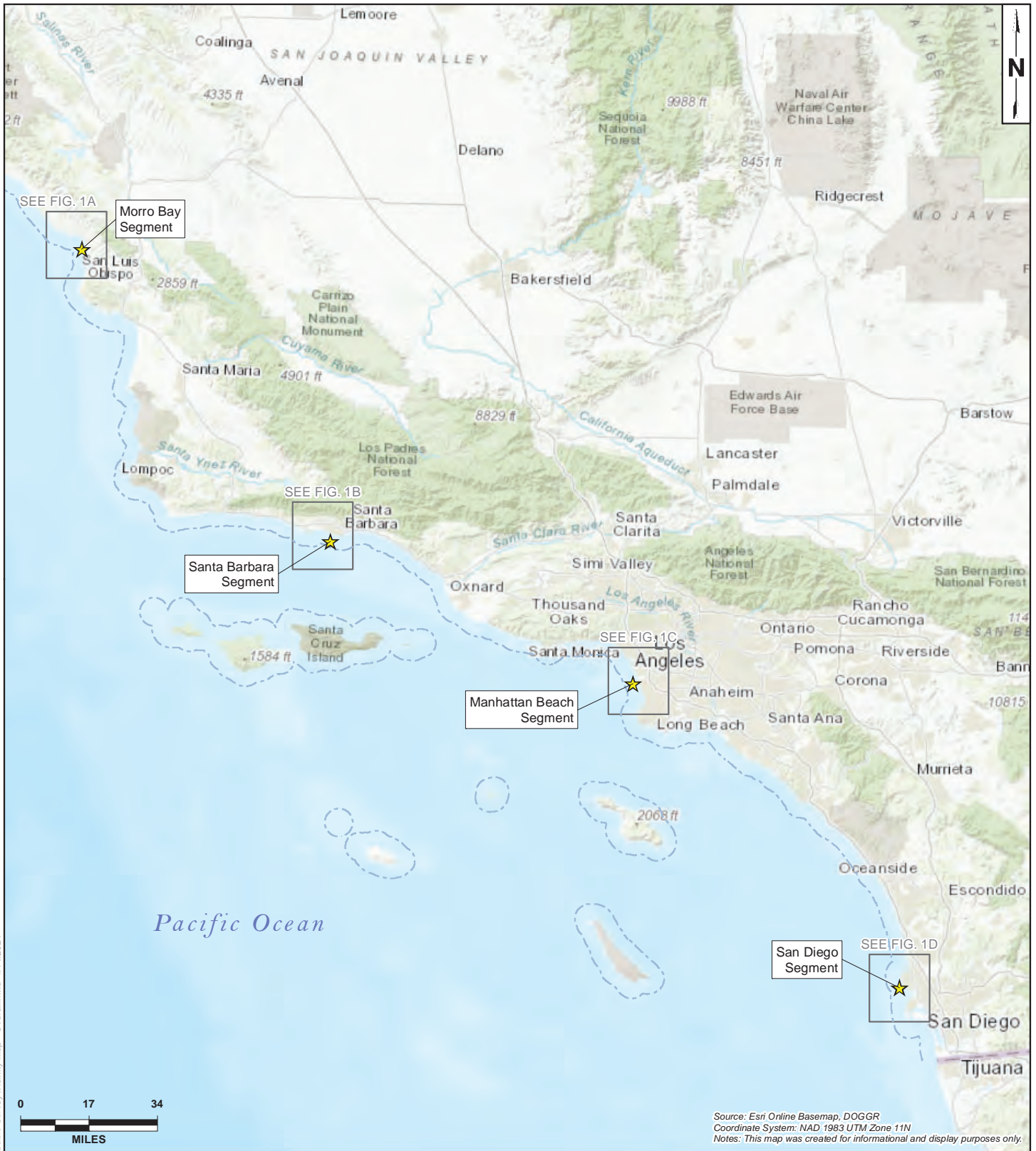
# Th11a

**E-00-008-A5/CC-110-00 (Zayo Group Holdings, Inc.)**

**November 2, 2021**

### **EXHIBITS**

Exhibit 1 – Map of Cables and Landings



**LEGEND:**

- ★ Segment Location
- - - - - Approximate 3-mile State Limit

**MAP EXTENT:**



PROJECT NAME: GLOBAL WEST CABLE SURVEY CDP AMENDMENT SAN LUIS OBISPO, SANTA BARBARA, LOS ANGELES, & SAN DIEGO COUNTIES, CA	
PROJECT NUMBER: 2002-8791	DATE: April 2021

**VICINITY MAP**

**FIGURE**  
**1**

Z:\GIS\Projects\GIS\_Maps\Map Project\Global West Cable Survey\Vicinity Map - Overall.mxd 4/14/2021



Source: Esri Online Topo Basemap, Longitude 123.2020  
 Coordinate System: NAD 1983 UTM Zone 11N  
 Notes: This map was created for informational and display purposes only.

**LEGEND:**

- Inferred Segment of Cable
- Surveyed Segment of Cable
- Approximate 3-mile State Limit

**MAP EXTENT:**



Z:\GIS\Projects\GIS\_Maps\Map Project\Global West Cable Survey\Vicinity Map - Segment Details.mxd - 4/14/2021



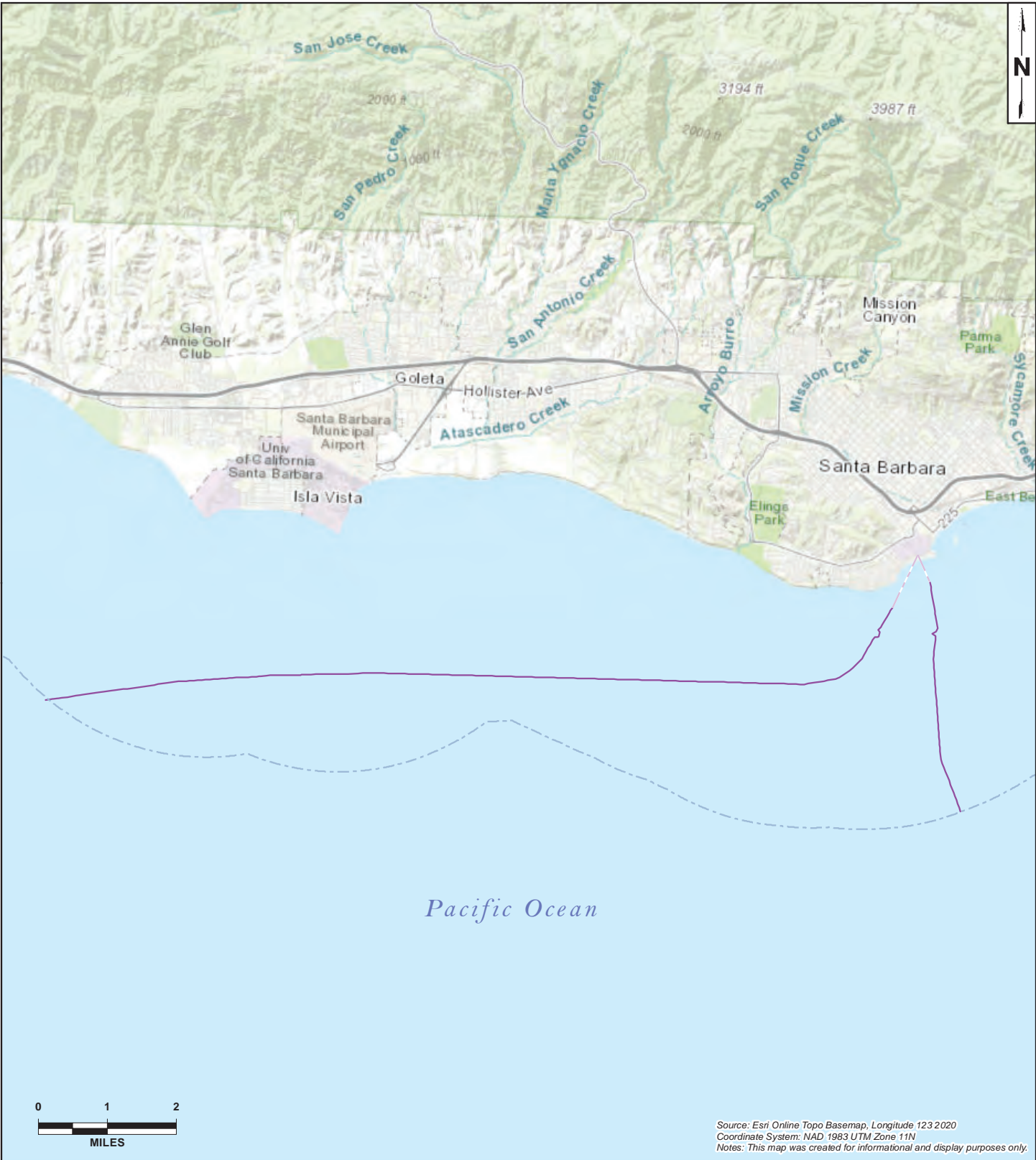
PROJECT NAME:  
 GLOBAL WEST CABLE SURVEY CDP AMENDMENT  
 SAN LUIS OBISPO, SANTA BARBARA,  
 LOS ANGELES, & SAN DIEGO COUNTIES, CA

PROJECT NUMBER:  
 2002-8791

DATE:  
 April 2021

**DETAILED VICINITY MAP  
 MORRO BAY SEGMENT**

**FIGURE  
 1A**



Source: Esri Online Topo Basemap, Longitude 123.2020  
 Coordinate System: NAD 1983 UTM Zone 11N  
 Notes: This map was created for informational and display purposes only.

**LEGEND:**

- Inferred Segment of Cable
- Surveyed Segment of Cable
- Approximate 3-mile State Limit

**MAP EXTENT:**

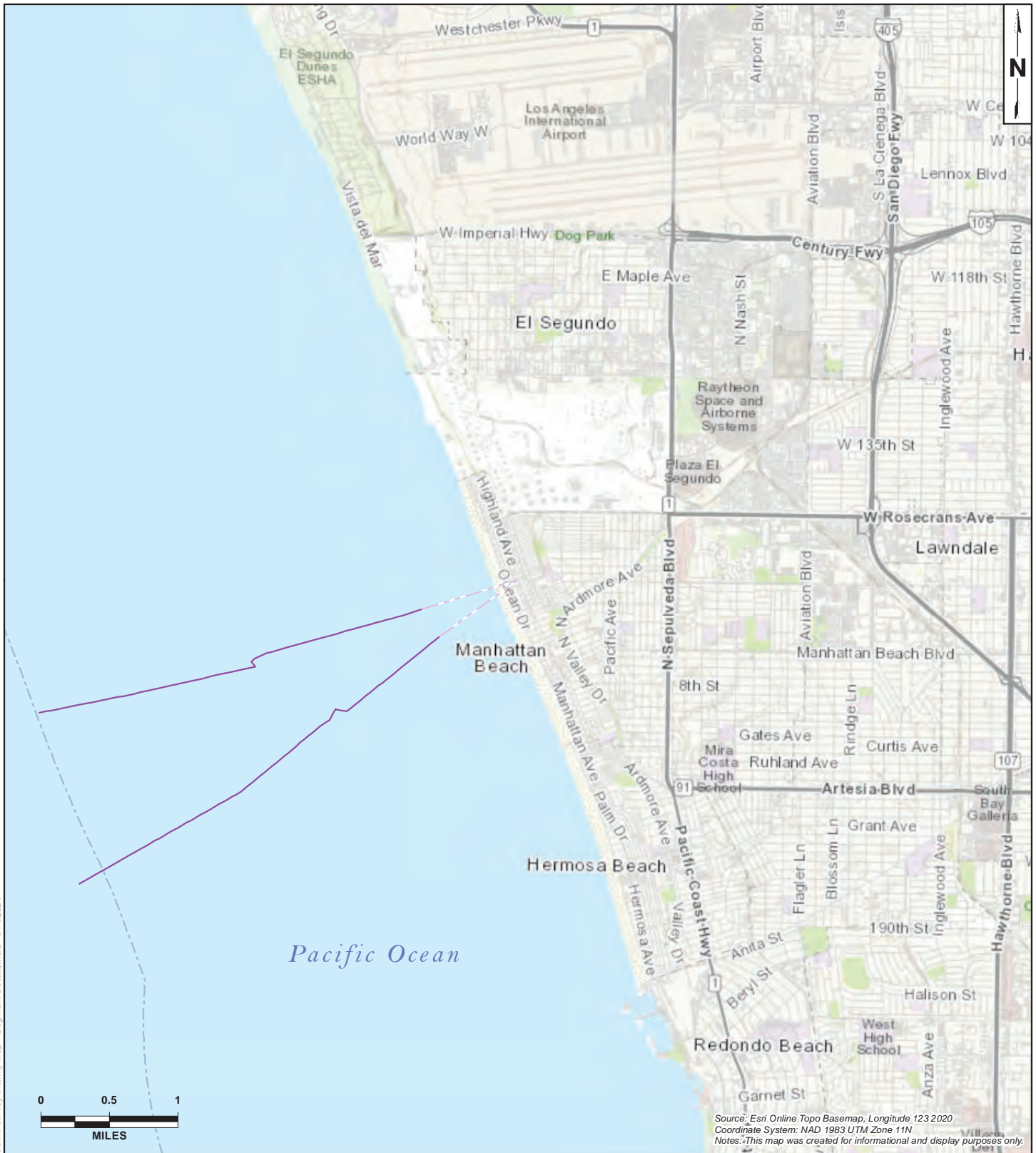


PROJECT NAME: GLOBAL WEST CABLE SURVEY CDP AMENDMENT SAN LUIS OBISPO, SANTA BARBARA, LOS ANGELES, & SAN DIEGO COUNTIES, CA	
PROJECT NUMBER: 2002-8791	DATE: April 2021

**DETAILED VICINITY MAP  
SANTA BARBARA SEGMENT**

**FIGURE  
1B**

Z:\GIS\Projects\GIS\_Maps\Map Project\Global West Cable Survey\Vicinity Map - Segment Details.mxd 4/14/2021



**LEGEND:**

- Inferred Segment of Cable
- Surveyed Segment of Cable
- Approximate 3-mile State Limit

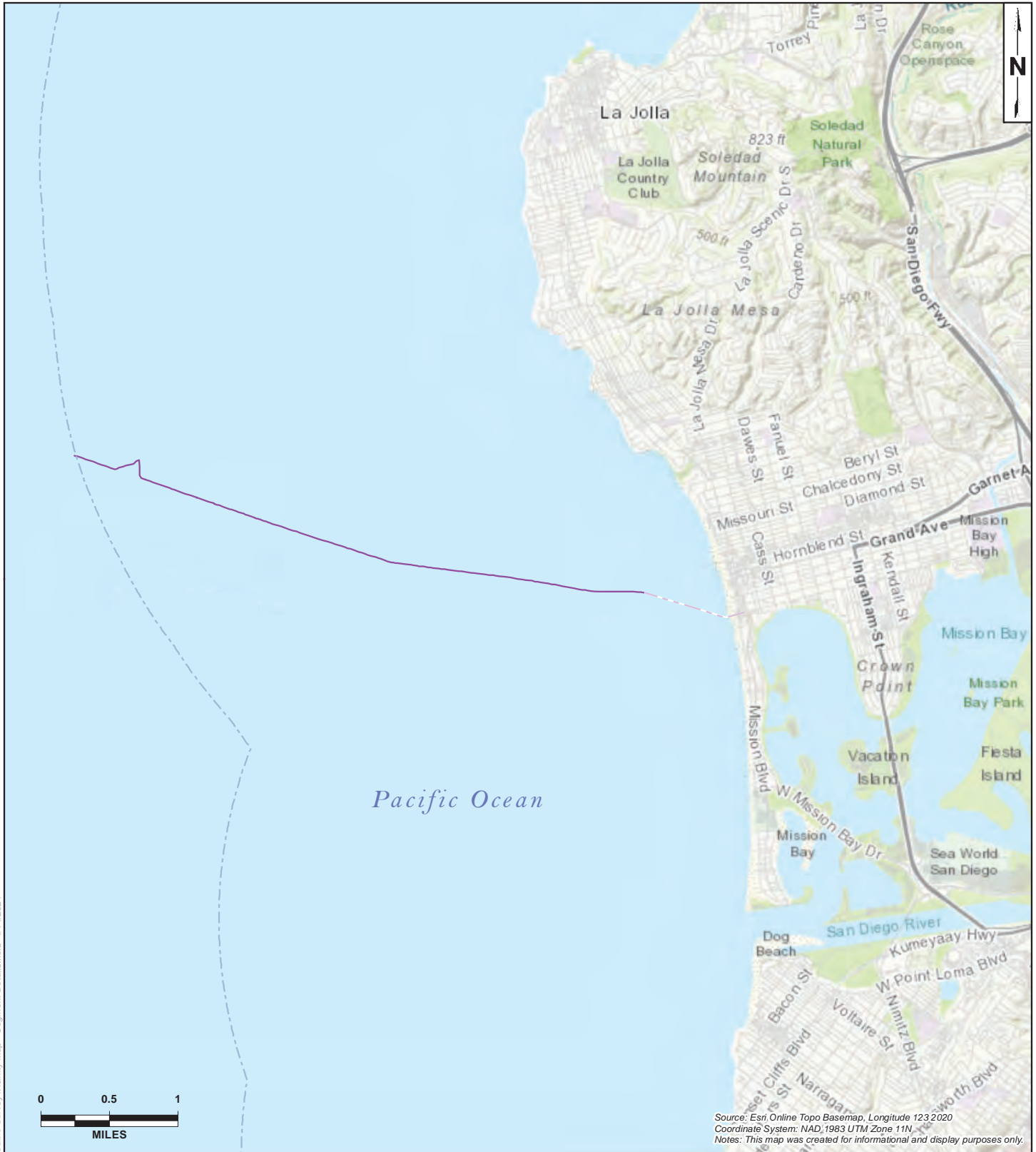
**MAP EXTENT:**



PROJECT NAME: GLOBAL WEST CABLE SURVEY CDP AMENDMENT SAN LUIS OBISPO, SANTA BARBARA, LOS ANGELES, & SAN DIEGO COUNTIES, CA	
PROJECT NUMBER: 2002-8791	DATE: April 2021

**DETAILED VICINITY MAP  
MANHATTAN BEACH SEGMENT**

**FIGURE  
1C**



**LEGEND:**

- Inferred Segment of Cable
- Surveyed Segment of Cable
- Approximate 3-mile State Limit

**MAP EXTENT:**



PROJECT NAME: GLOBAL WEST CABLE SURVEY CDP AMENDMENT SAN LUIS OBISPO, SANTA BARBARA, LOS ANGELES, & SAN DIEGO COUNTIES, CA	
PROJECT NUMBER: 2002-8791	DATE: April 2021

**DETAILED VICINITY MAP  
SAN DIEGO SEGMENT**

**FIGURE  
1D**