
CALIFORNIA COASTAL COMMISSION

South Coast District Office
301 E Ocean Blvd., Suite 300
Long Beach, CA 90802-4302
(562) 590-5071



W9b

5-21-0776 (Global Franchise Group and City of Santa Monica)

December 15, 2021

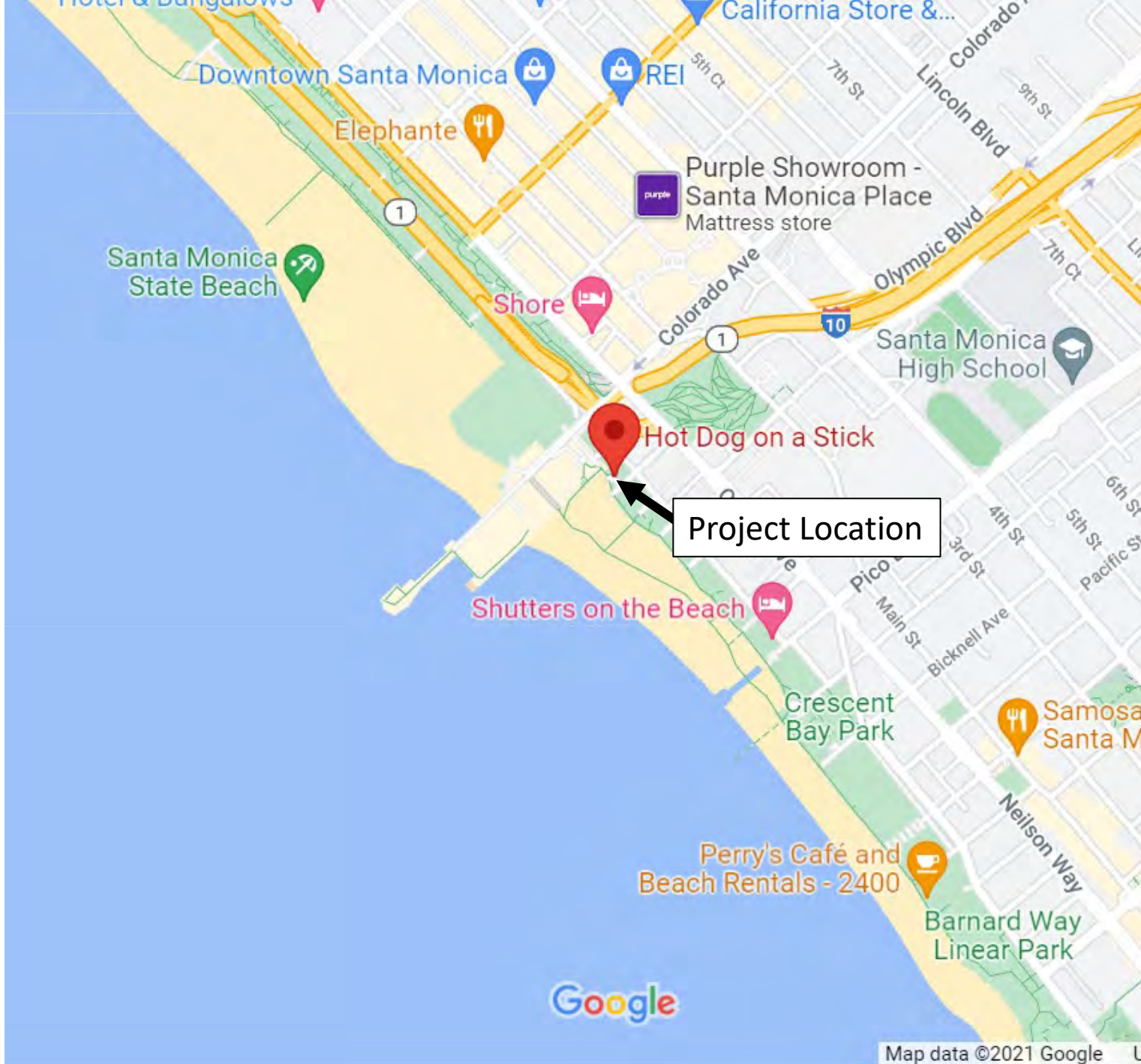
EXHIBITS

Exhibit 1 - Vicinity Map

Exhibit 2 - Aerial View

Exhibit 3 – Street View

Exhibit 4 - Plans



California Coastal Commission
5-21-0776
Exhibit 1



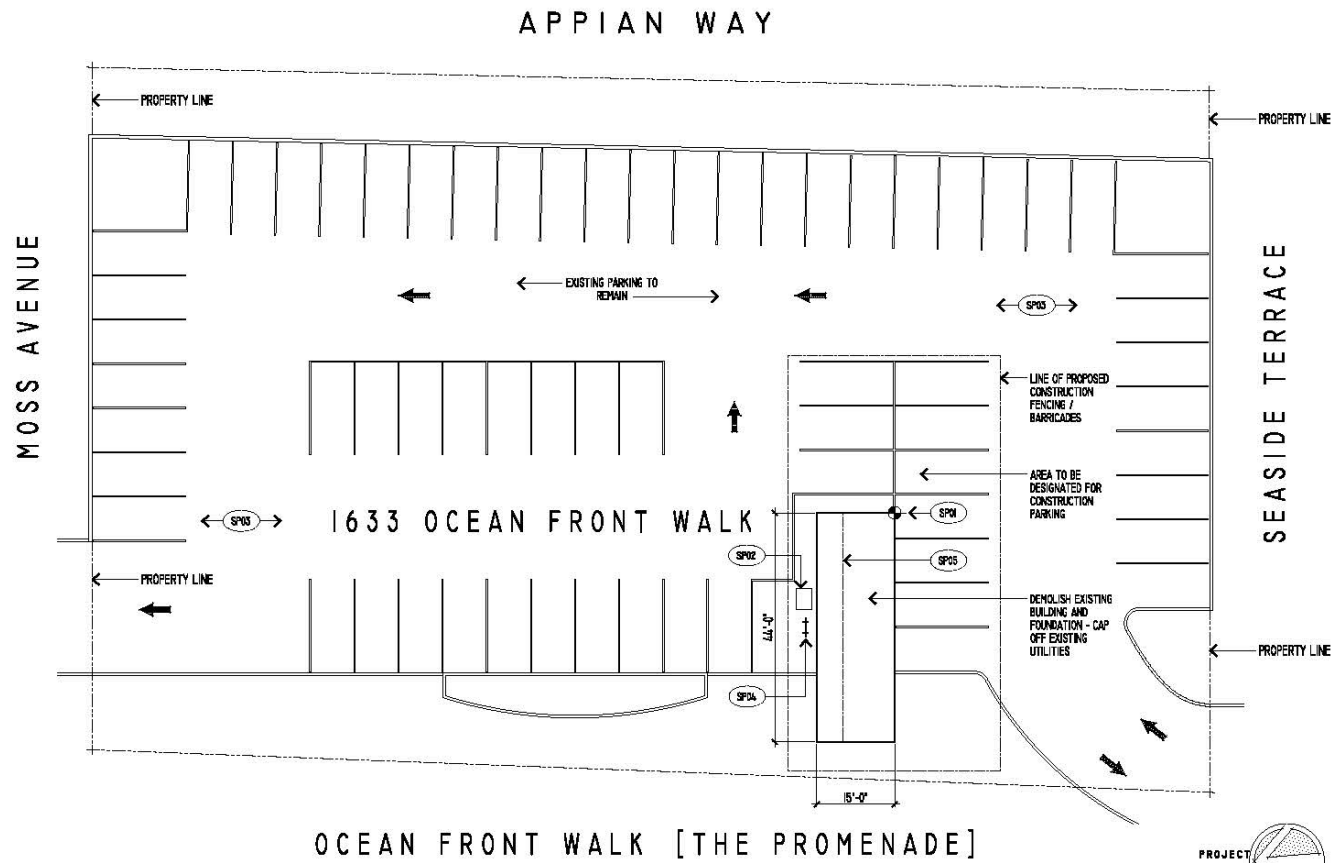
California Coastal Commission

5-21-0776

Exhibit 2



California Coastal Commission
5-21-0776
Exhibit 3



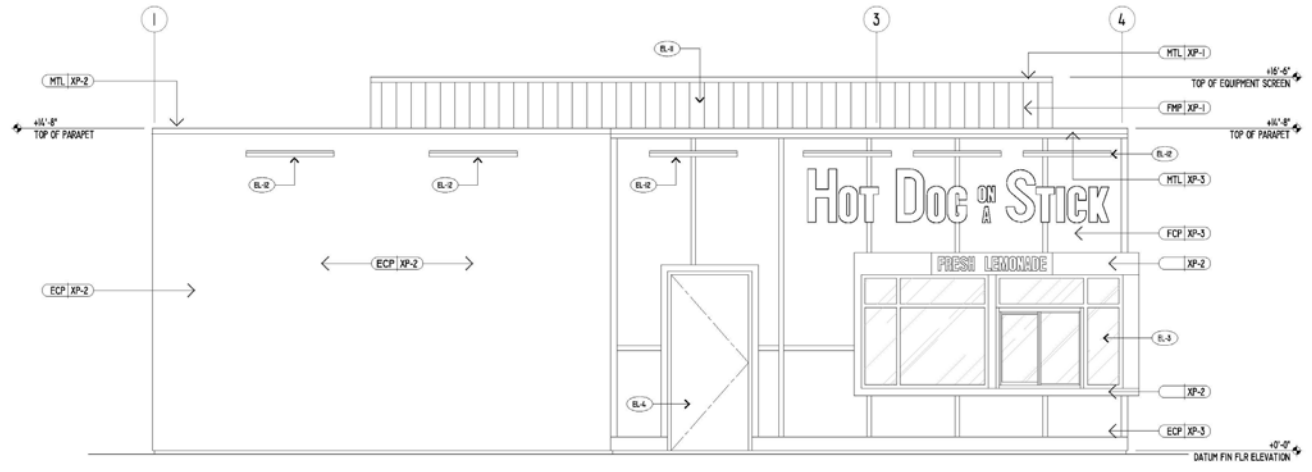
OCEAN FRONT WALK [THE PROMENADE]



PARTIAL SITE PLAN

WARNING - DIG SAFELY

CALIFORNIA GOVERNMENT CODE SECTION 4216 REQUIRES THOSE
 PLANNING TO DIG OR EXCAVATE TO CALL DIG-ALERT TO OBTAIN AN IDENTIFICATION
 NUMBER AT LEAST TWO WORKING DAYS - NOT INCLUDING THE DAY OF NOTIFICATION -
 BEFORE THEY DIG



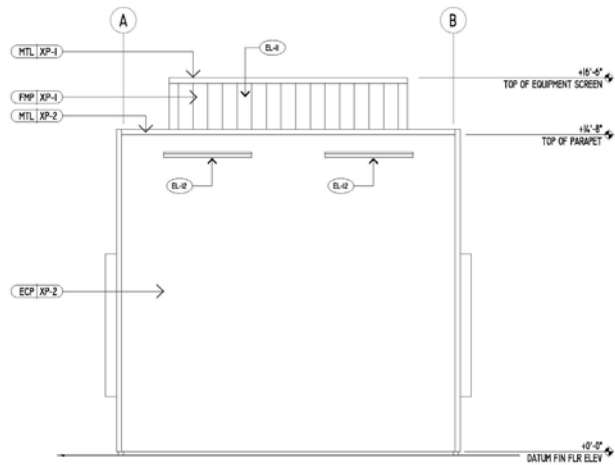
1
NORTH EXTERIOR ELEVATION

SCALE: 3/8" = 1'-0"

GLAZING WITHIN 18 INCHES OF FINISH FLOOR AND WITHIN 24 INCHES OF DOORS AND LESS THAN 40 INCHES ABOVE ADJACENT SURFACE SHALL BE SAFETY GLAZING COMPLYING WITH ALL BUILDING CODES - A PERMANENT LABEL SHALL IDENTIFY EACH LIGHT OF SAFETY GLAZING - EACH UNIT OF TEMPERED GLASS SHALL BE PERMANENTLY IDENTIFIED BY THE MANUFACTURER - THE IDENTIFICATION SHALL BE ETCHED OR CERAMIC FIRED ON THE GLASS AND BE VISIBLE WHEN THE UNIT IS GLAZED

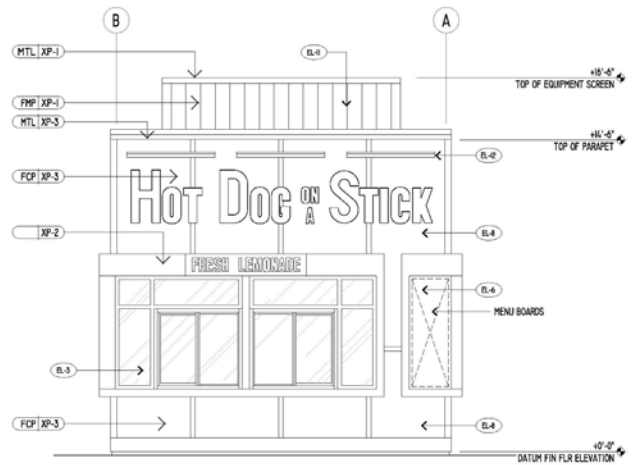
AT ALL EXTERIOR ALUMINUM STOREFRONT SYSTEMS - PROVIDE HORIZONTAL STIFFENERS AS REQUIRED TO MEET PERFORMANCE SPECIFICATIONS

(T) INDICATES TEMPERED GLAZING



3
EAST EXTERIOR ELEVATION

SCALE: 3/8" = 1'-0"



2
WEST EXTERIOR ELEVATION

SCALE: 3/8" = 1'-0"

