

CALIFORNIA COASTAL COMMISSION

SAN DIEGO DISTRICT OFFICE
7575 METROPOLITAN DRIVE, SUITE 103
SAN DIEGO, CA 92108-4402
VOICE (619) 767-2370
FAX (619) 767-2384



W14d

LCP-6-SAN-19-0161-3 (MISSION VALLEY REZONE)

May 2021

EXHIBITS

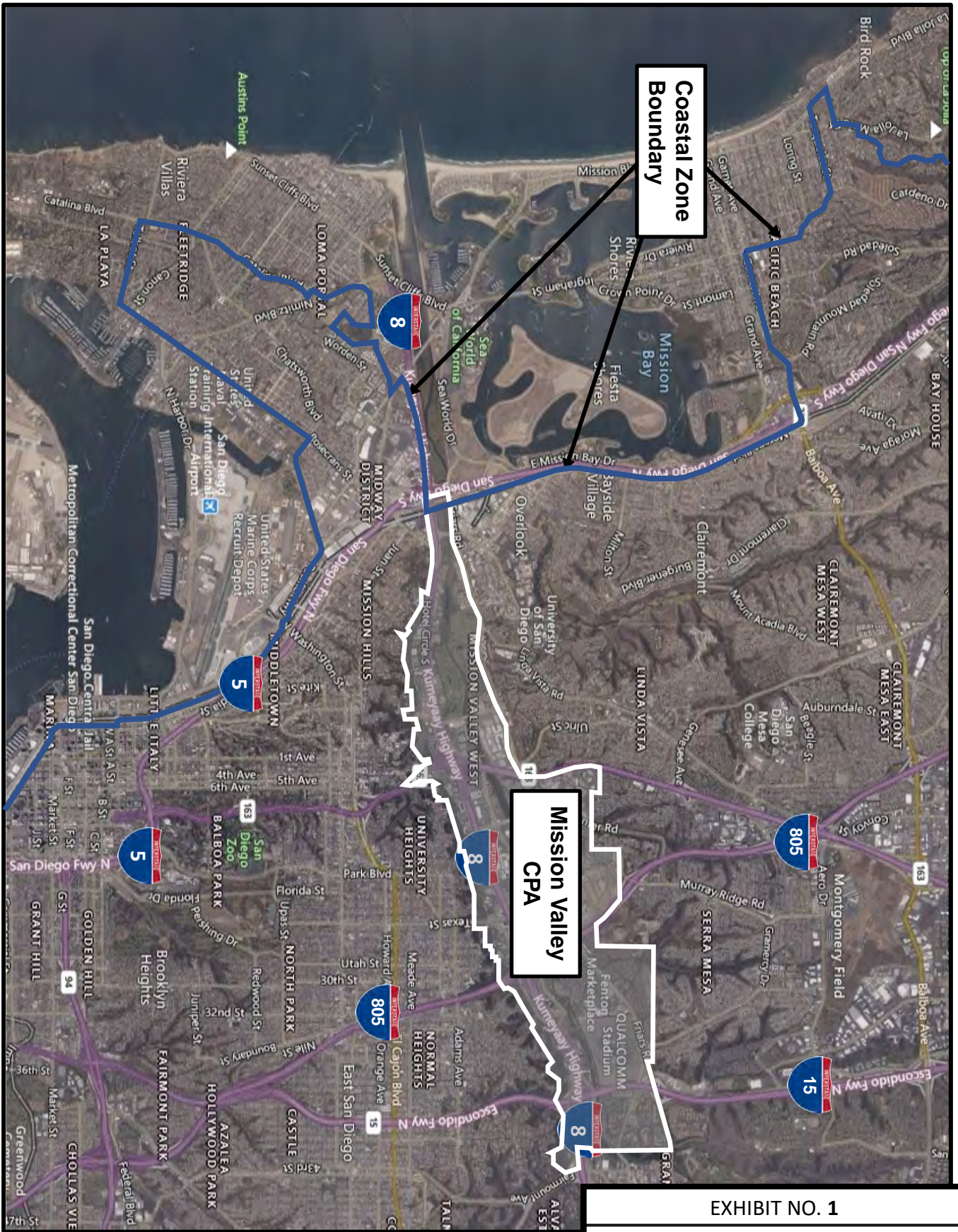
Table of Contents

EXHIBIT 1: Vicinity Map

EXHIBIT 2: Mission Valley Community Planning Area

EXHIBIT 3: Map of Revised Zone

EXHIBIT 4: CPIOZ Subdistricts



Coastal Zone Boundary

Mission Valley CPA

EXHIBIT NO. 1	
Vicinity Map	
LCP-6-SAN-19-0161-3	
California Coastal Commission	



Planning Area

18 acres in the Coastal Zone

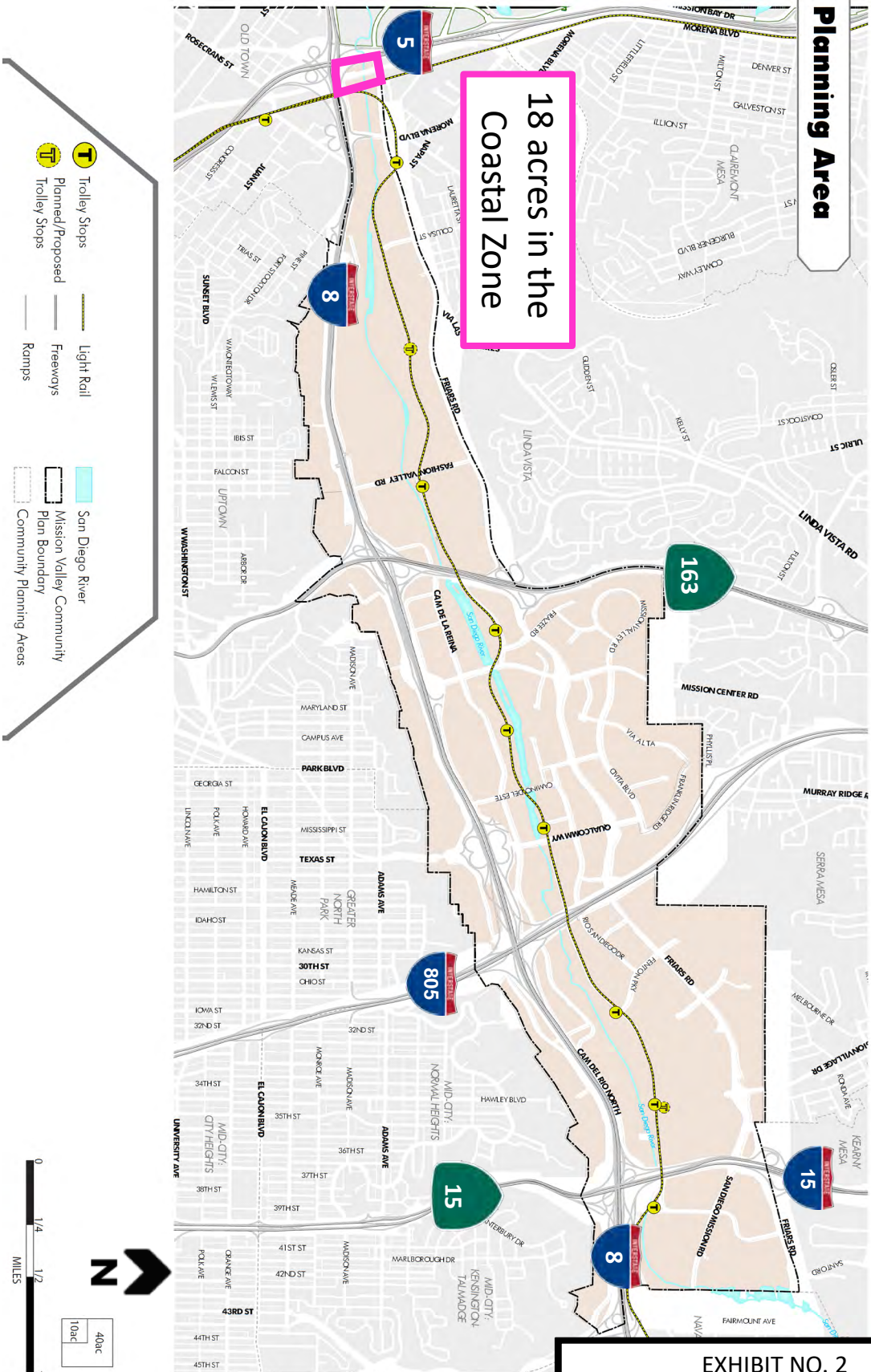


EXHIBIT NO. 2

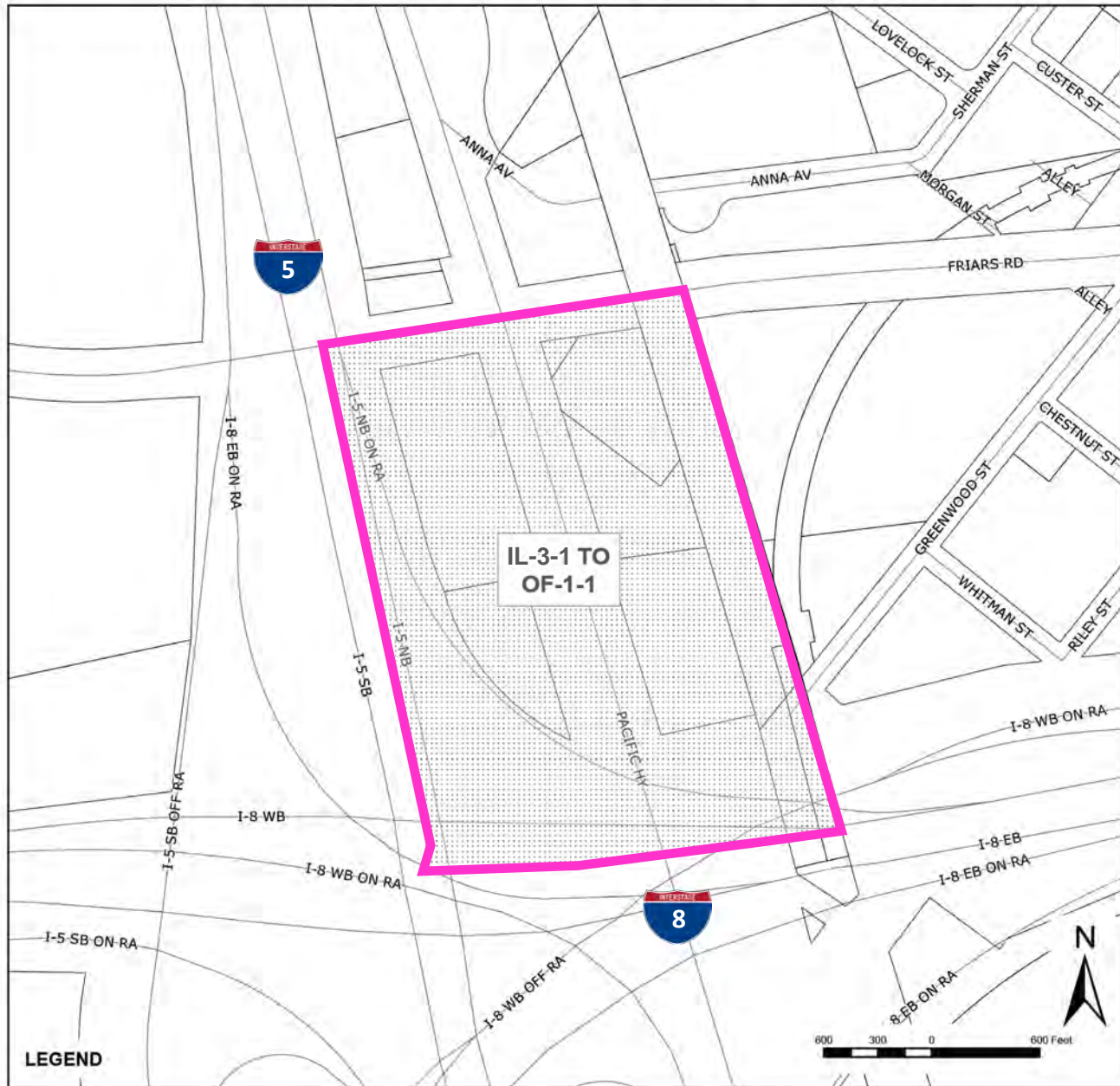
Mission Valley CPA

LCP-6-SAN-19-0161-3

California Coastal Commission



PROPOSED REZONING



MISSION VALLEY - COASTAL ZONE

ORDINANCE NO. _____
 EFF. DATE ORD. _____
 ZONING SUBJ. TO _____
 BEFORE DATE _____
 EFF. DATE ZONING _____
 MAP NAME AND NO. _____

REQUEST OF-1-1
 PLANNING COMM.
 RECOMMENDATION
 CITY COUNCIL
 ACTION

CASE NO.

DEVELOPMENT SERVICES MANAGER

B-4343

EXHIBIT NO. 3

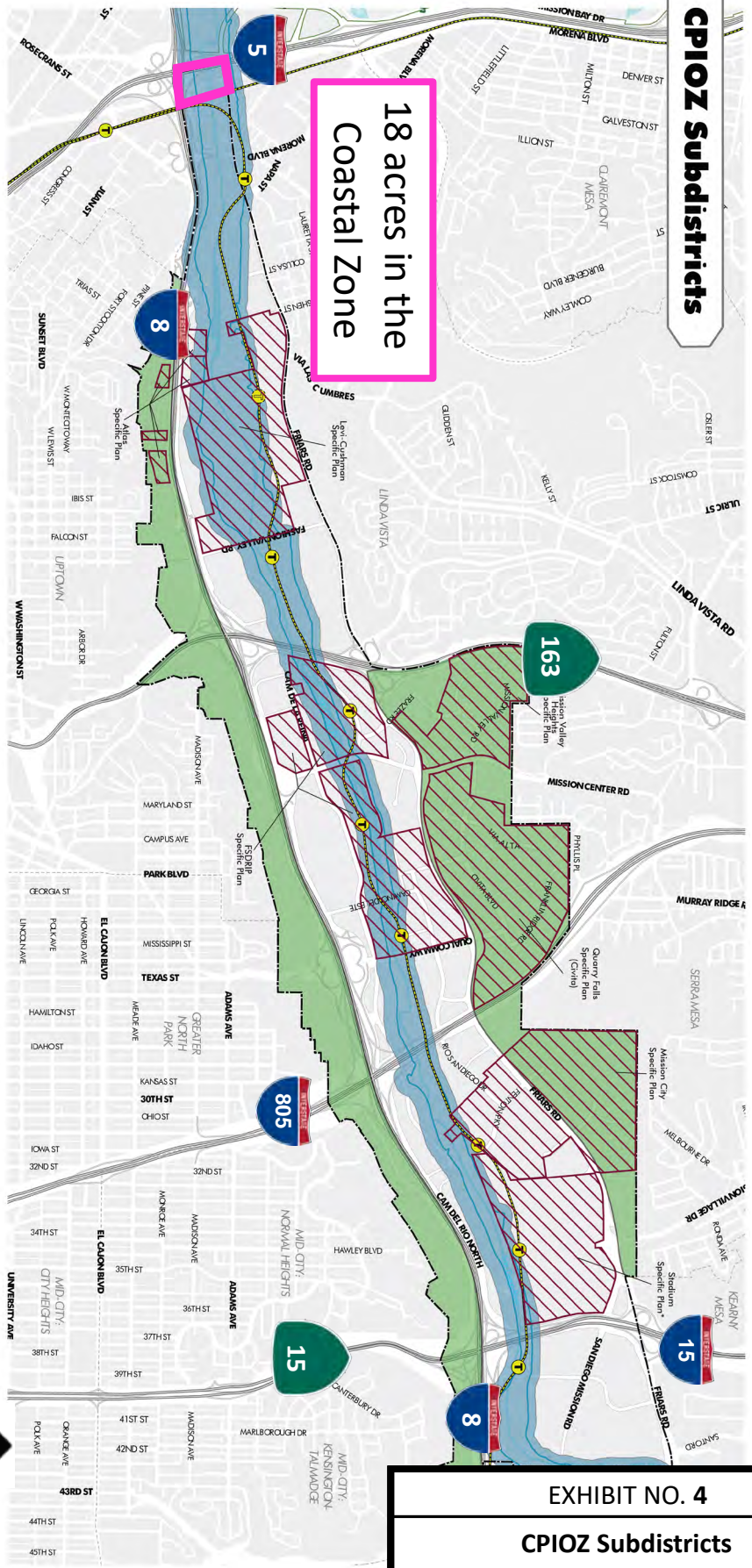
Map of Revised Zone

LCP-6-SAN-19-0161-3
 California Coastal Commission



CPIOZ Subdistricts

18 acres in the Coastal Zone



- ### General Information
- Trolley Stops
 - Planned Trolley Stops
 - Light Rail
 - Freeways
 - Ramps
 - San Diego River
 - Mission Valley Community Plan Boundary
 - Community Planning Areas
 - 100 Year Floodway

- ### CPIOZ Subdistricts
- San Diego River Subdistrict
 - Hillside Subdistrict
 - Specific Plan Subdistrict
 - To be completed



Note: This map illustrates approximate boundaries and may not be relied upon to demonstrate actual boundaries, which are established according to the location of the current 100-year floodway as mapped by the Federal Emergency Management Agency (FEMA) and which is subject to change.

EXHIBIT NO. 4

CPIOZ Subdistricts

LCP-6-SAN-19-0161-3

California Coastal Commission