

CALIFORNIA COASTAL COMMISSION

South Coast Area Office
301 E. Ocean Blvd. Suite 300
Long Beach, CA 90802-4302
(562) 590-5071



F5c

5-19-1195 (MARINA PACIFICA BOAT SLIPS, LLC)

JUNE 11, 2021

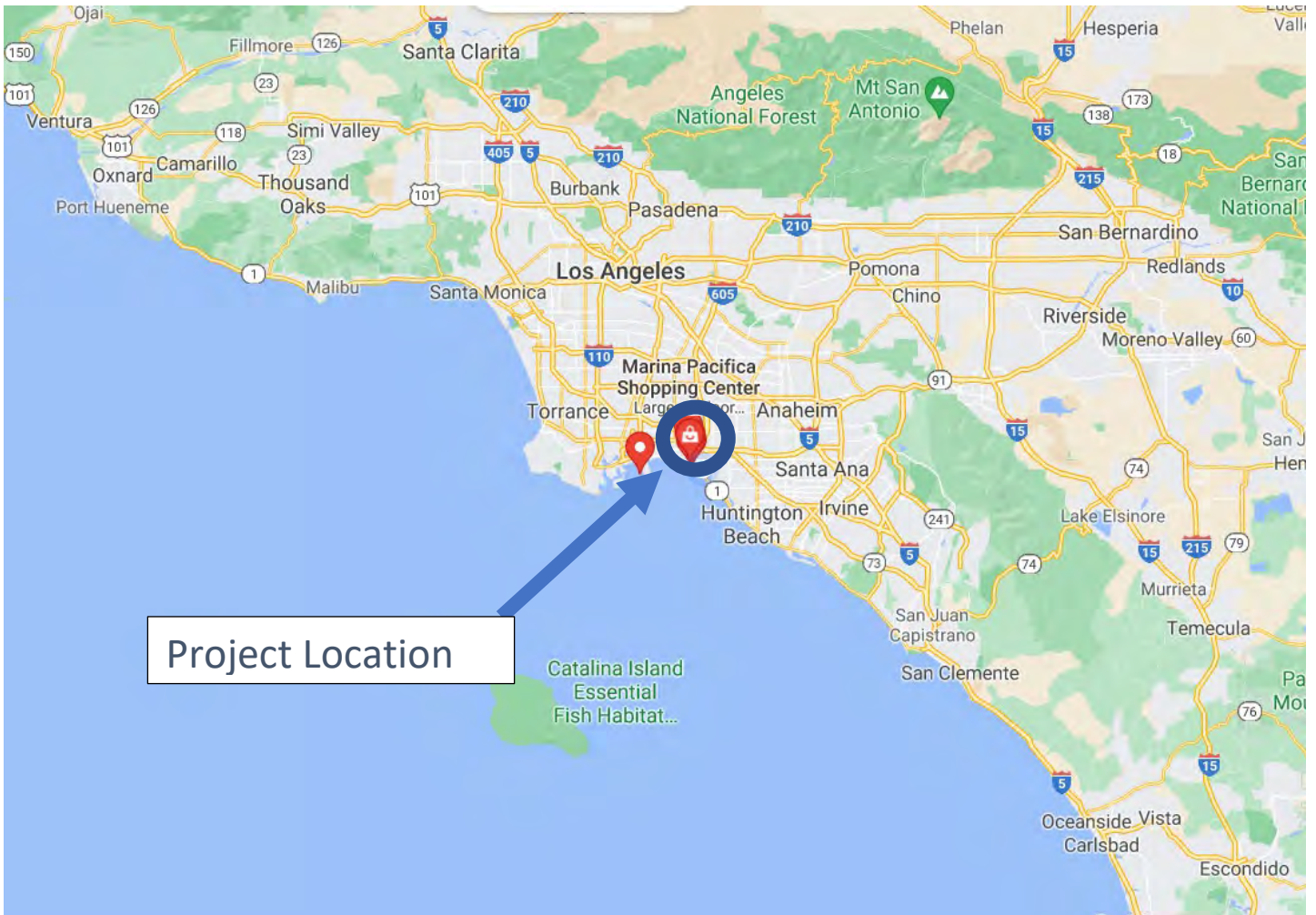
EXHIBITS

Exhibit 1 – Vicinity Map

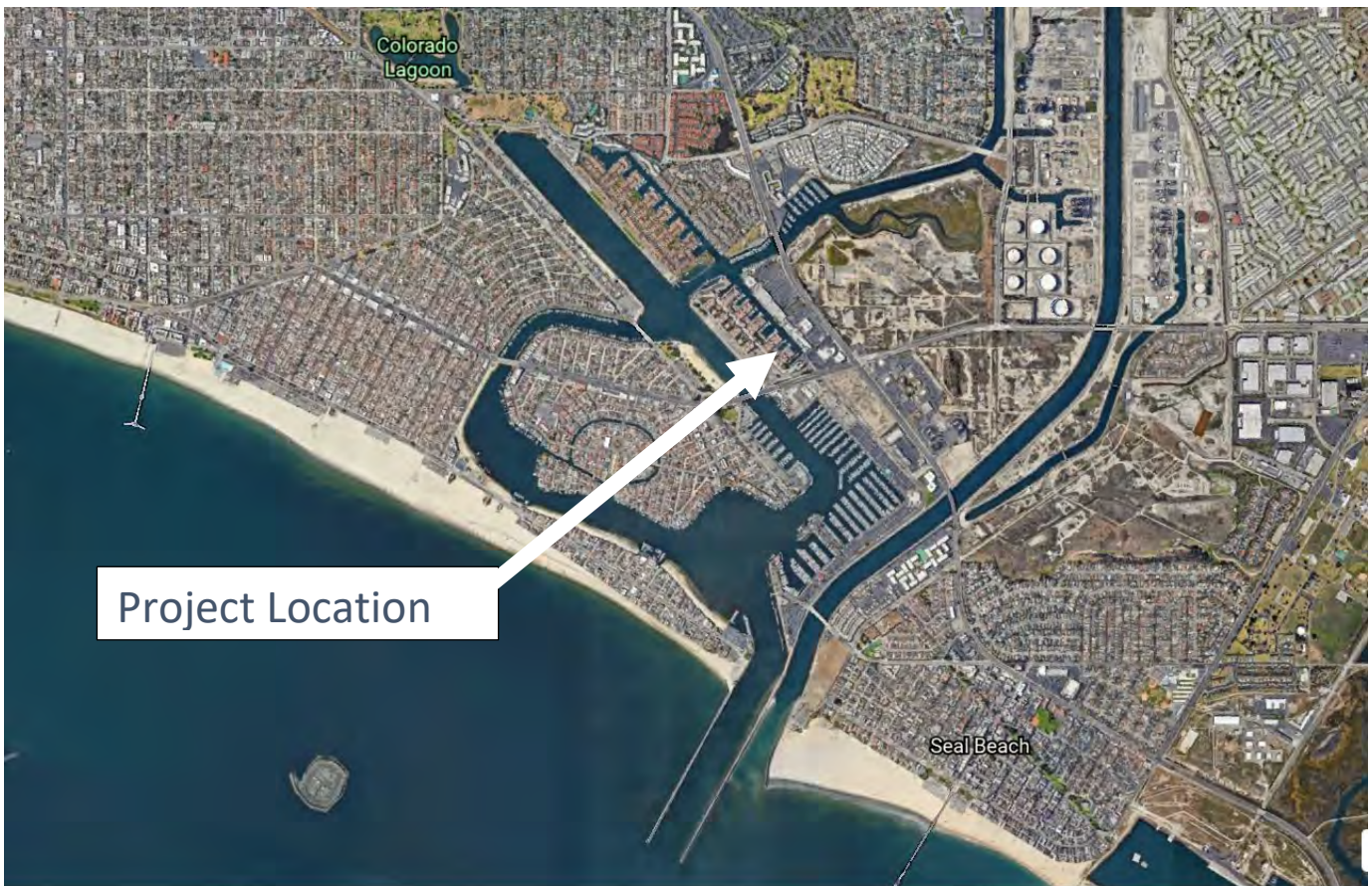
Exhibit 2 – Site Plan

Exhibit 3 – Project Plans

Exhibit 4 – Pipe Pile Mooring Details

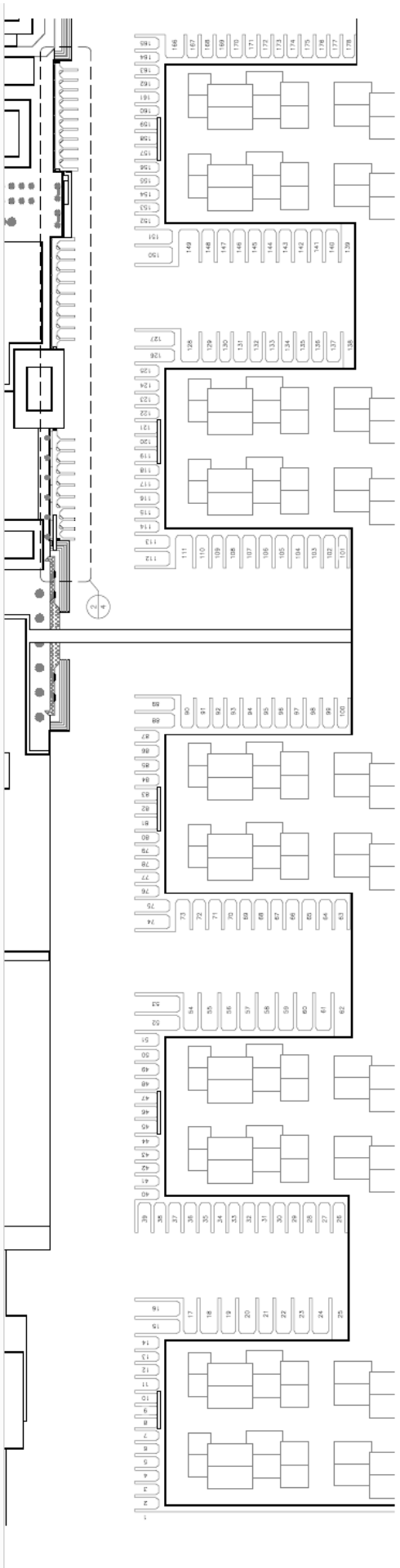


Project Location

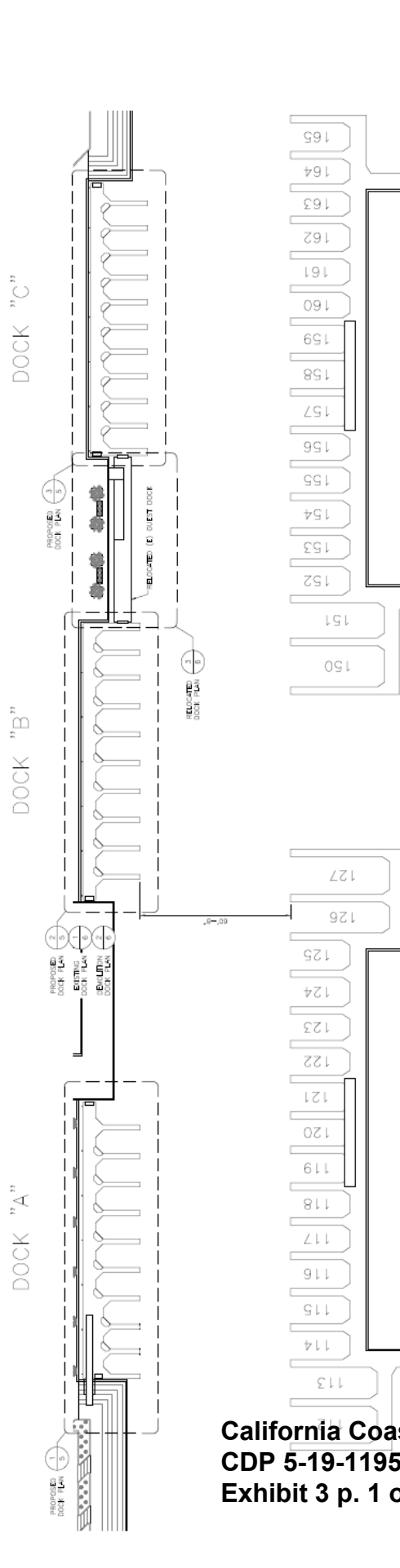


Project Location





SITE PLAN

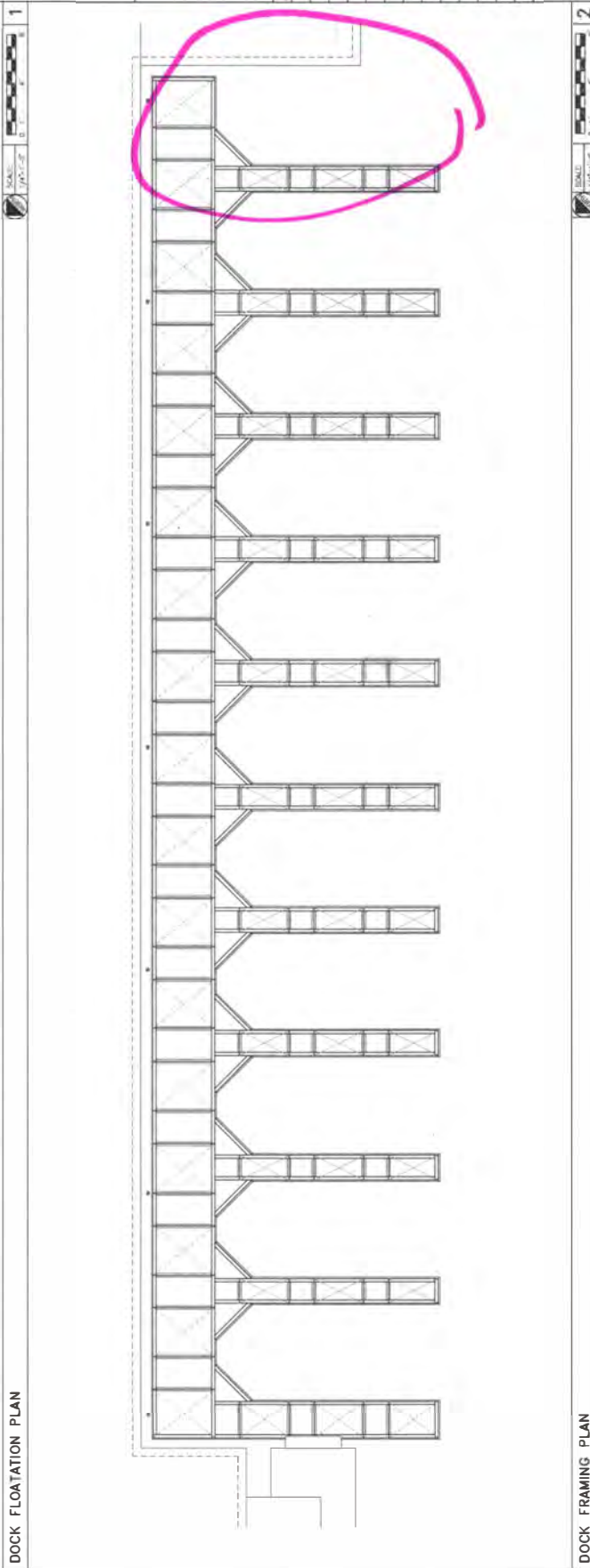
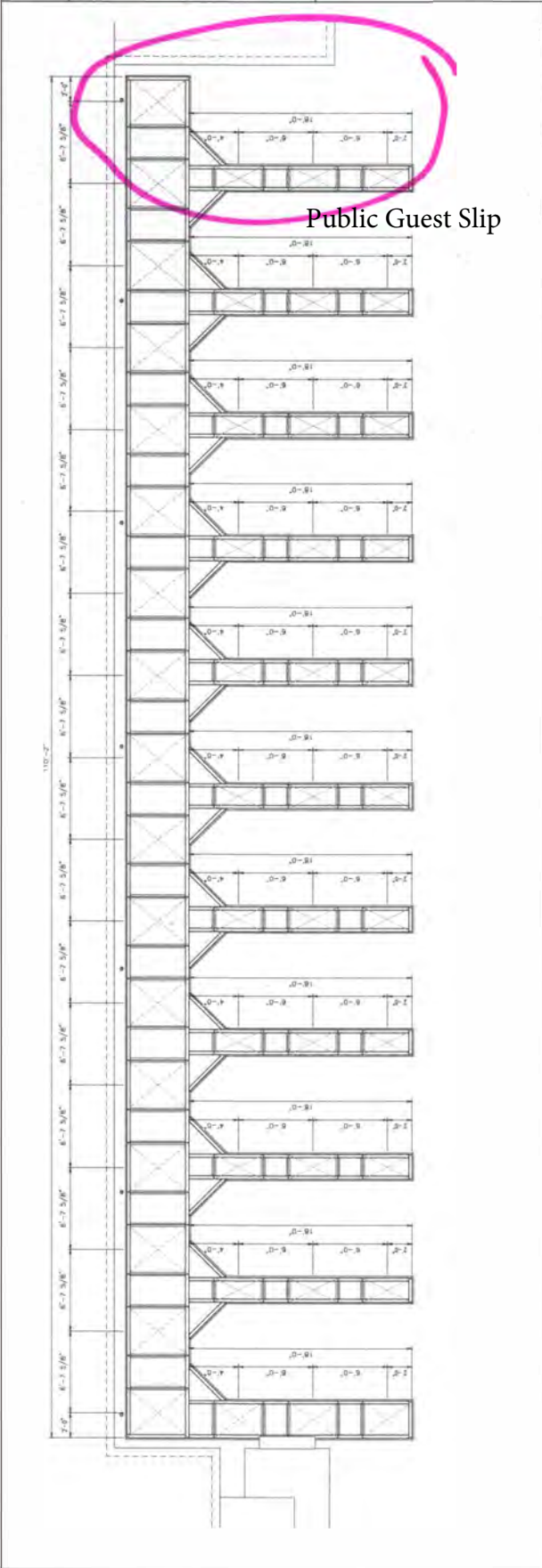


PROPRIETARY INFORMATION
 ALL RIGHTS RESERVED
 ANY REPRODUCTION OR DISSEMINATION OF THIS DOCUMENT WITHOUT THE WRITTEN PERMISSION OF THE DESIGNER IS STRICTLY PROHIBITED.
 next step DESIGN, INC.
 18170 KATHERINE WAY SUITE 400
 LAKE FOREST, CA 92509
 PHONE (949) 918-8288
 FAX (949) 407-9878

PROJECT: MARINA PACIFICA
 LOCATION: 6380 EAST PACIFIC COAST HIGHWAY
 LONG BEACH, CA 90803
 SHEET TITLE: DOCK PLANS



REVISED	DATE
1	11/11/18
DRAWN BY: AG CHECKED BY: AS NOTED DATE: 01-15-19 SHEET: S-03	





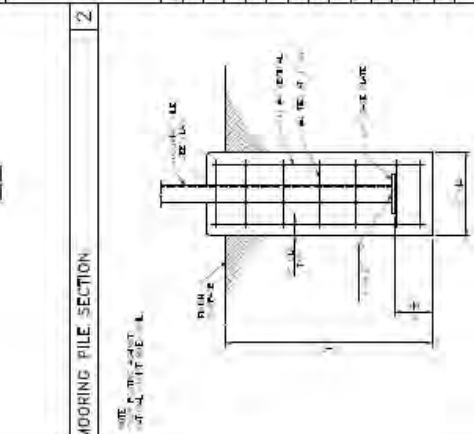
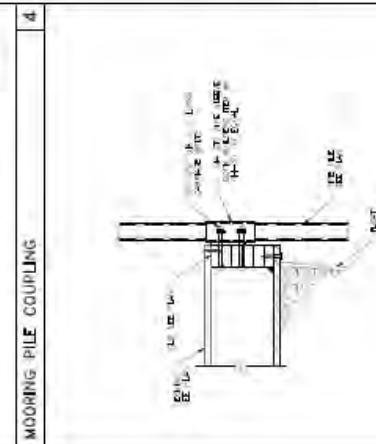
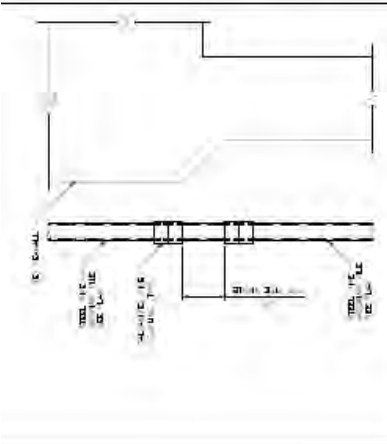
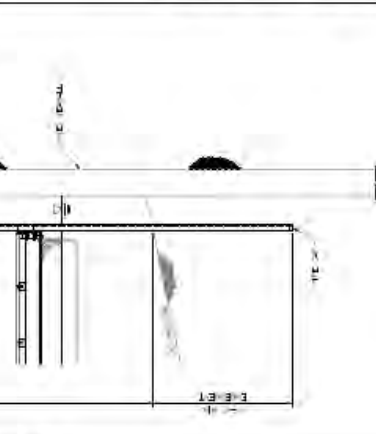
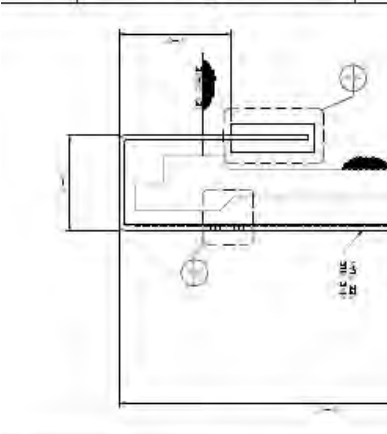
next step
DESIGN, INC.
SAFELY. EFFICIENTLY. NEXT STEP.
34150 ENTERPRISE WAY SUITE 400
LAKELAND, CA 92531
PHONE (949) 481-9399
FAX (949) 481-8898

SHEET
TITLE PIPE MOORING DETAILS
PROJECT MARINA PACIFICA
LOCATION 1400 SOUTH COAST HIGHWAY
LONG BEACH, CA 90805



DATE	01/15/08
BY	J. L. GIBSON
CHECKED	M. J. C. (M. J. C.)
APPROVED	
DATE	
BY	
CHECKED	
APPROVED	
DATE	
BY	
CHECKED	
APPROVED	
DATE	
BY	
CHECKED	
APPROVED	
DATE	
BY	
CHECKED	
APPROVED	

7



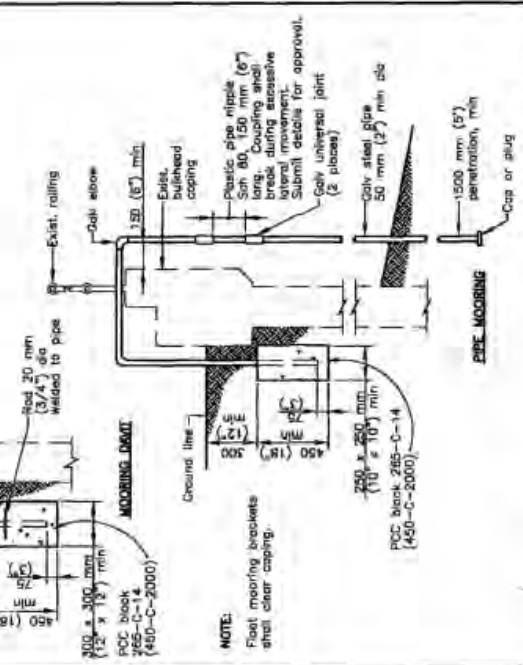
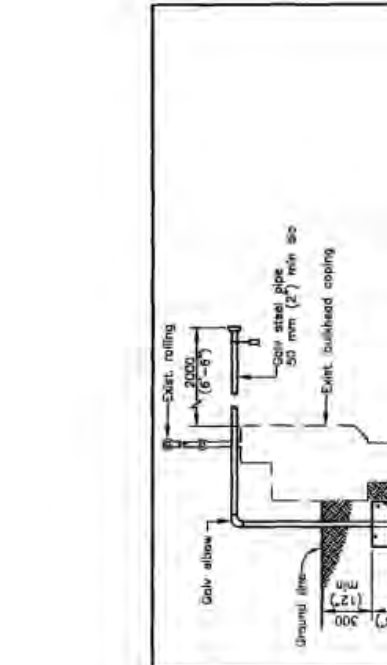
NOTE:
AT ALL ATTACHMENTS

MOORING PILE COUPLING

MOORING PILE SECTION

PILE ATTACHMENT

MOORING PILE SECTION



NOTE:
Flood mooring brackets shall clear capping.

PIPE MOORING

Cap or plug
-1500 mm (5') penetration, min

Galv steel pipe
50 mm (2") min dia

Galv universal joint
(2 pieces)

Submit details for approval.

Plastic pipe nipple
Sch 80 150 mm (6") long. Coupling shall break during excessive lateral movement.

Exsit. bulkhead capping

150 (6") min bulkhead capping

Galv elbow

Exsit. rolling

Exsit. bulkhead capping

Galv steel pipe
50 mm (2") min dia

Exsit. rolling
2000 (6'-6")

Galv elbow

Galv universal joint
(2 pieces)

Galv steel pipe
50 mm (2") min dia

Cap or plug

250 x 250 min (10 x 10) min PCC block 285-C-14 (450-C-2000)

Ground line

Mooring davit

Rod 20 mm (3/4") dia welded to pipe

100 x 100 mm (4 x 4) min PCC block 285-C-14 (450-C-2000)

2000 (6'-6")

Galv elbow

Galv steel pipe
50 mm (2") min dia

Exsit. bulkhead capping

Exsit. rolling

Galv elbow

150 (6") min bulkhead capping

Rod 20 mm (3/4") dia welded to pipe

Mooring davit

Ground line

250 x 250 min (10 x 10) min PCC block 285-C-14 (450-C-2000)

Galv universal joint
(2 pieces)

Galv steel pipe
50 mm (2") min dia

Cap or plug

2000 (6'-6")

REVISIONS	CITY OF LONG BEACH, CALIFORNIA
NO. DATE	DEPARTMENT OF PUBLIC WORKS
1 12/13/06	
2 12/13/06	
3 12/13/06	
4 12/13/06	
5 12/13/06	

PIPE MOORINGS AND DAVITS

APPROVED BY: [Signature]

DATE: 12/13/06

SHEET 1 OF 1