

CALIFORNIA COASTAL COMMISSION

455 MARKET STREET, SUITE 300
SAN FRANCISCO, CA 94105-2219
VOICE (415) 904-5200
FAX (415) 904-5400
WWW.COASTAL.CA.GOV



Th12b/13a

CDP 9-21-0165/CC-0004-21 (RTI Infrastructure)

July 22, 2021

EXHIBIT 7

Exhibit 7 – Marine Cable Route Survey with BOEM planning area, Marine Protected Areas, and Habitat Areas of Particular Concern (HAPC)

Figure 3.4-3. Marine Biological Study Area

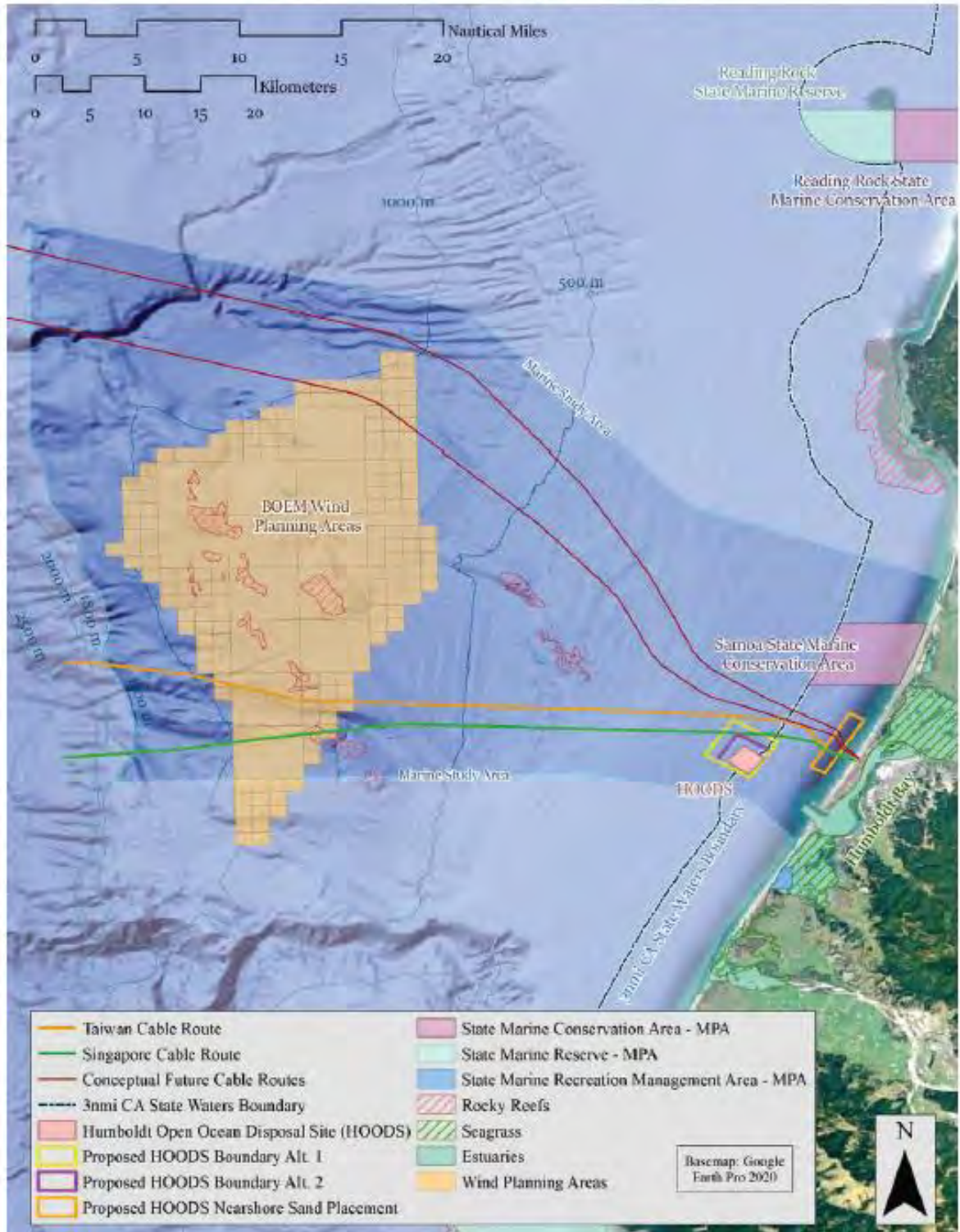


Exhibit 7

Phase 1

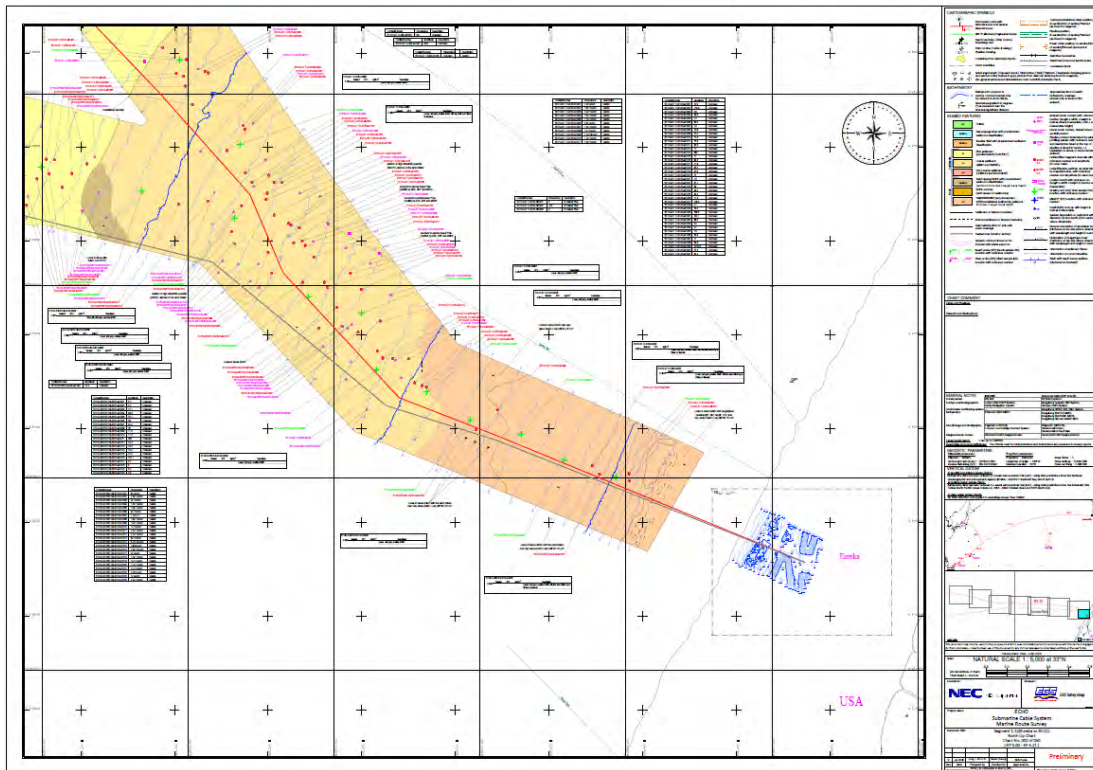
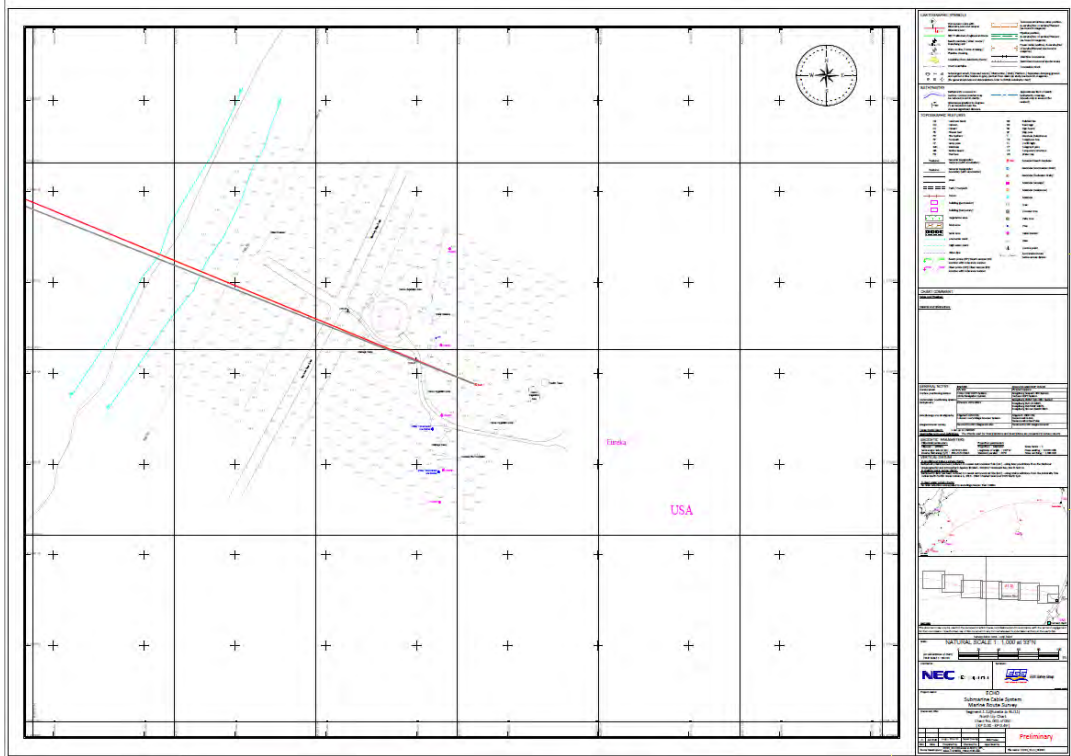


Exhibit 7

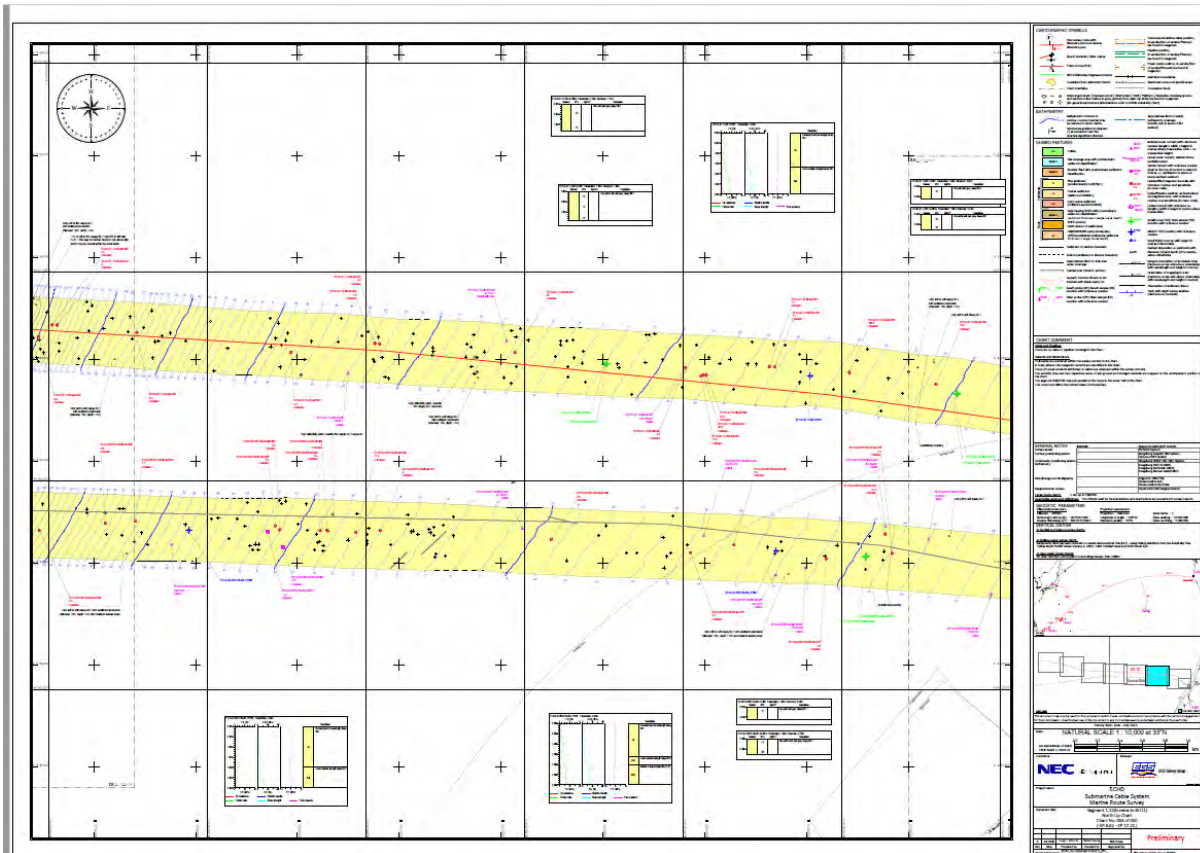
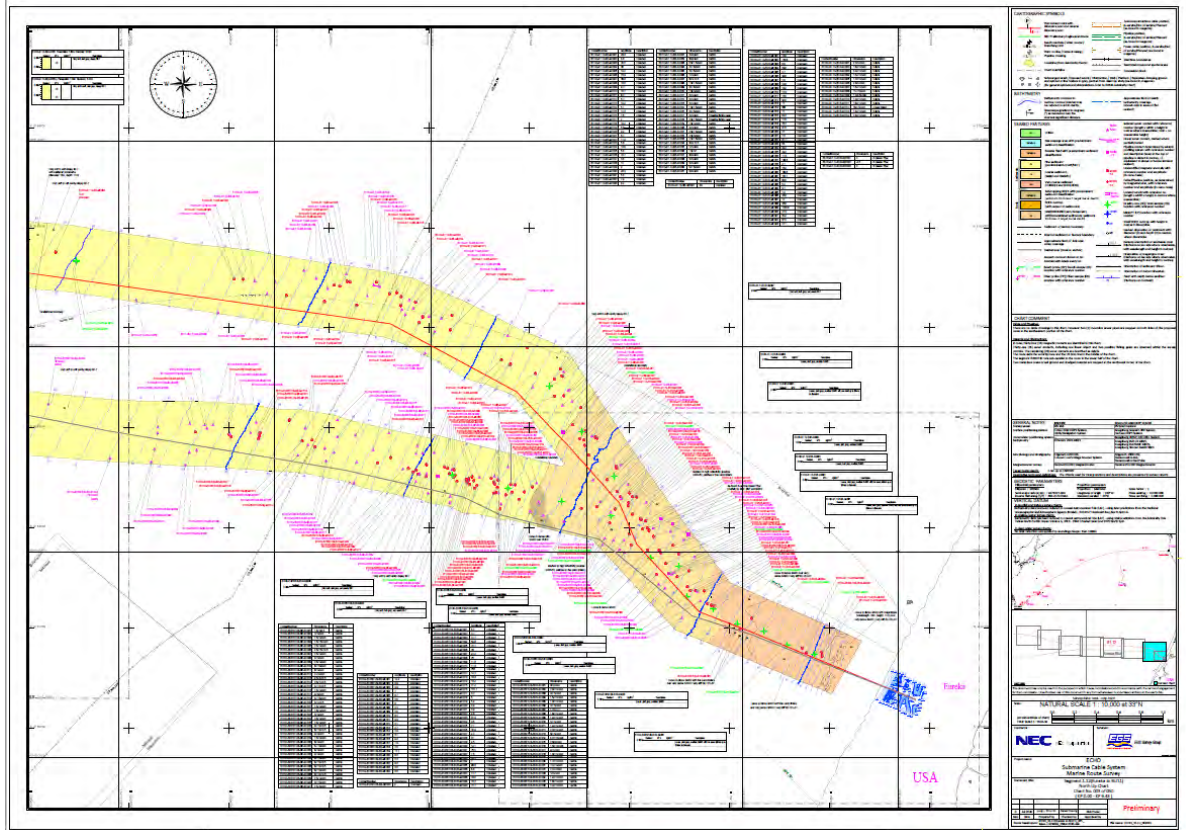
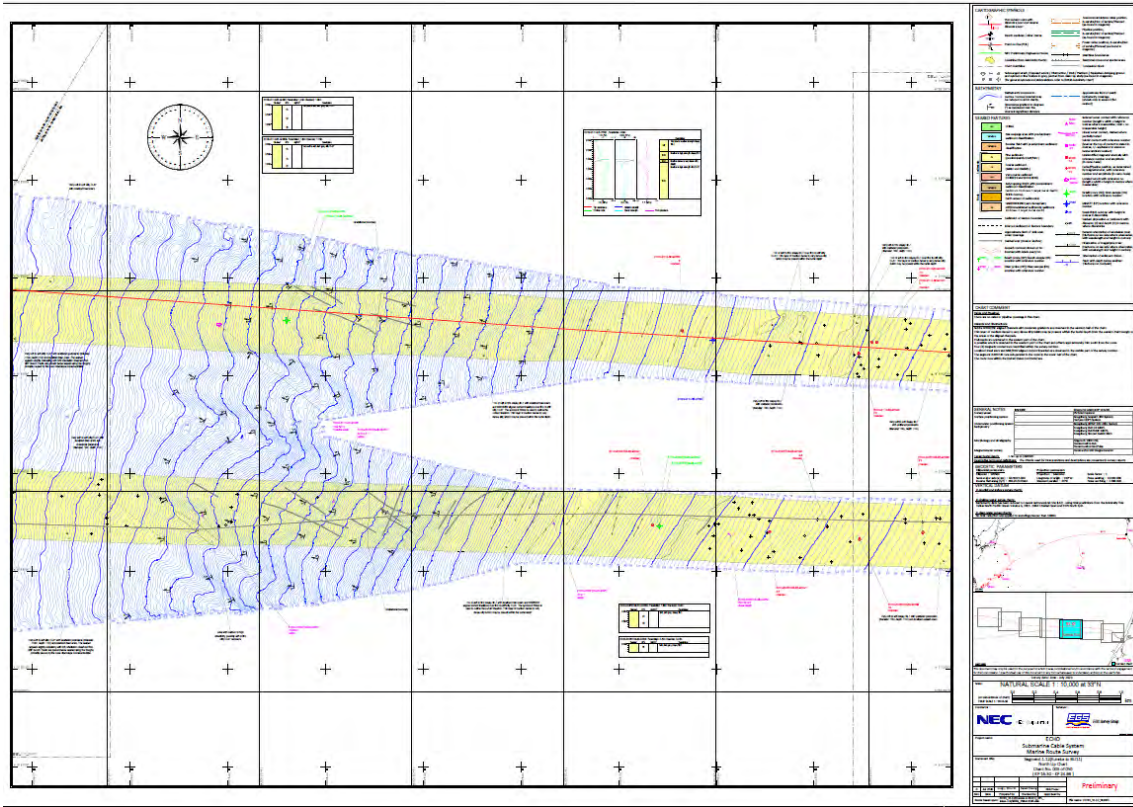


Exhibit 7



Legend

- Proposed Cable Route
- Proposed Cable Right-of-Way
- Proposed Cable Alignment
- Proposed Cable Structure
- Proposed Cable Support Structure
- Proposed Cable Access Point
- Proposed Cable Termination Point
- Proposed Cable Junction Point
- Proposed Cable Splice Point
- Proposed Cable Repair Point
- Proposed Cable Replacement Point
- Proposed Cable Upgrade Point
- Proposed Cable Expansion Point
- Proposed Cable Contraction Point
- Proposed Cable Maintenance Point
- Proposed Cable Inspection Point
- Proposed Cable Testing Point
- Proposed Cable Calibration Point
- Proposed Cable Adjustment Point
- Proposed Cable Replacement Point
- Proposed Cable Upgrade Point
- Proposed Cable Expansion Point
- Proposed Cable Contraction Point
- Proposed Cable Maintenance Point
- Proposed Cable Inspection Point
- Proposed Cable Testing Point
- Proposed Cable Calibration Point
- Proposed Cable Adjustment Point

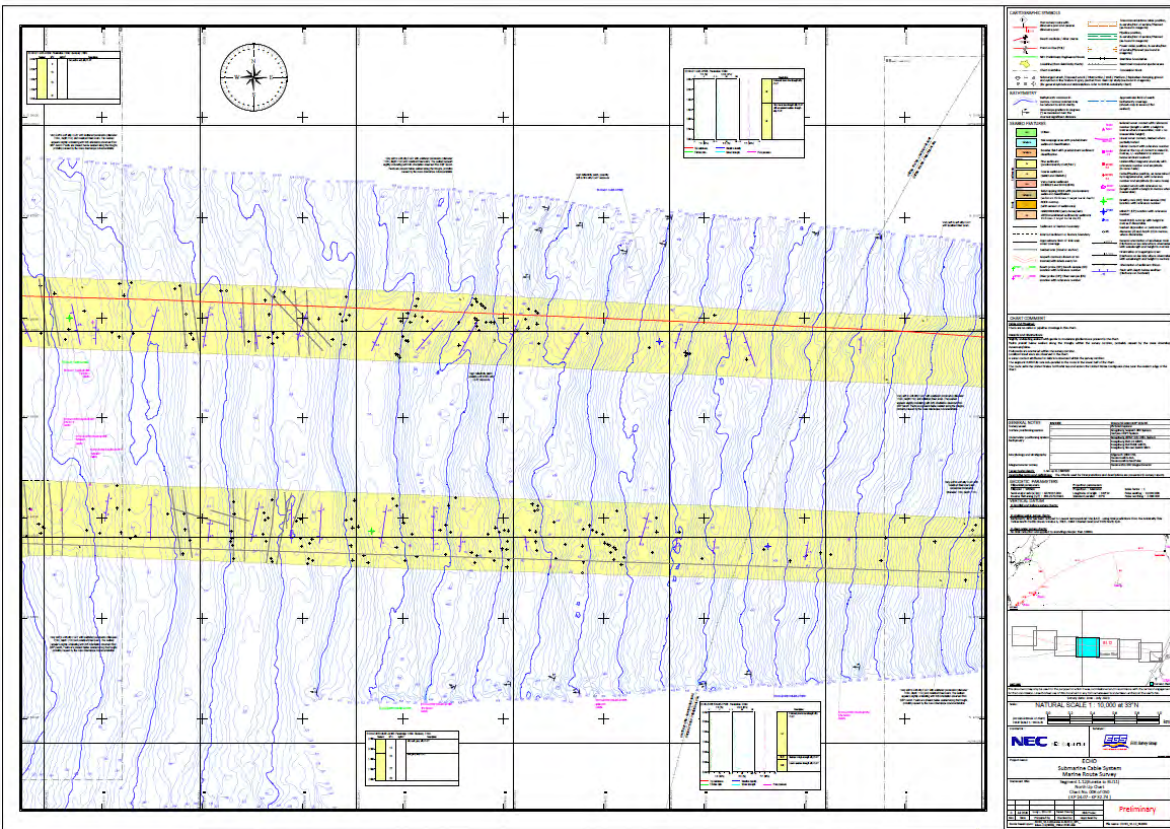
Scale

NATURAL SCALE 1" = 10.00' @ 20" x 30"

NEC **ES&E**

ES&E
Submarine Cable Systems
Maritime Route Survey

Preliminary



Legend

- Proposed Cable Route
- Proposed Cable Right-of-Way
- Proposed Cable Alignment
- Proposed Cable Structure
- Proposed Cable Support Structure
- Proposed Cable Access Point
- Proposed Cable Termination Point
- Proposed Cable Junction Point
- Proposed Cable Splice Point
- Proposed Cable Repair Point
- Proposed Cable Replacement Point
- Proposed Cable Upgrade Point
- Proposed Cable Expansion Point
- Proposed Cable Contraction Point
- Proposed Cable Maintenance Point
- Proposed Cable Inspection Point
- Proposed Cable Testing Point
- Proposed Cable Calibration Point
- Proposed Cable Adjustment Point
- Proposed Cable Replacement Point
- Proposed Cable Upgrade Point
- Proposed Cable Expansion Point
- Proposed Cable Contraction Point
- Proposed Cable Maintenance Point
- Proposed Cable Inspection Point
- Proposed Cable Testing Point
- Proposed Cable Calibration Point
- Proposed Cable Adjustment Point

Scale

NATURAL SCALE 1" = 10.00' @ 20" x 30"

NEC **ES&E**

ES&E
Submarine Cable Systems
Maritime Route Survey

Preliminary

Exhibit 7

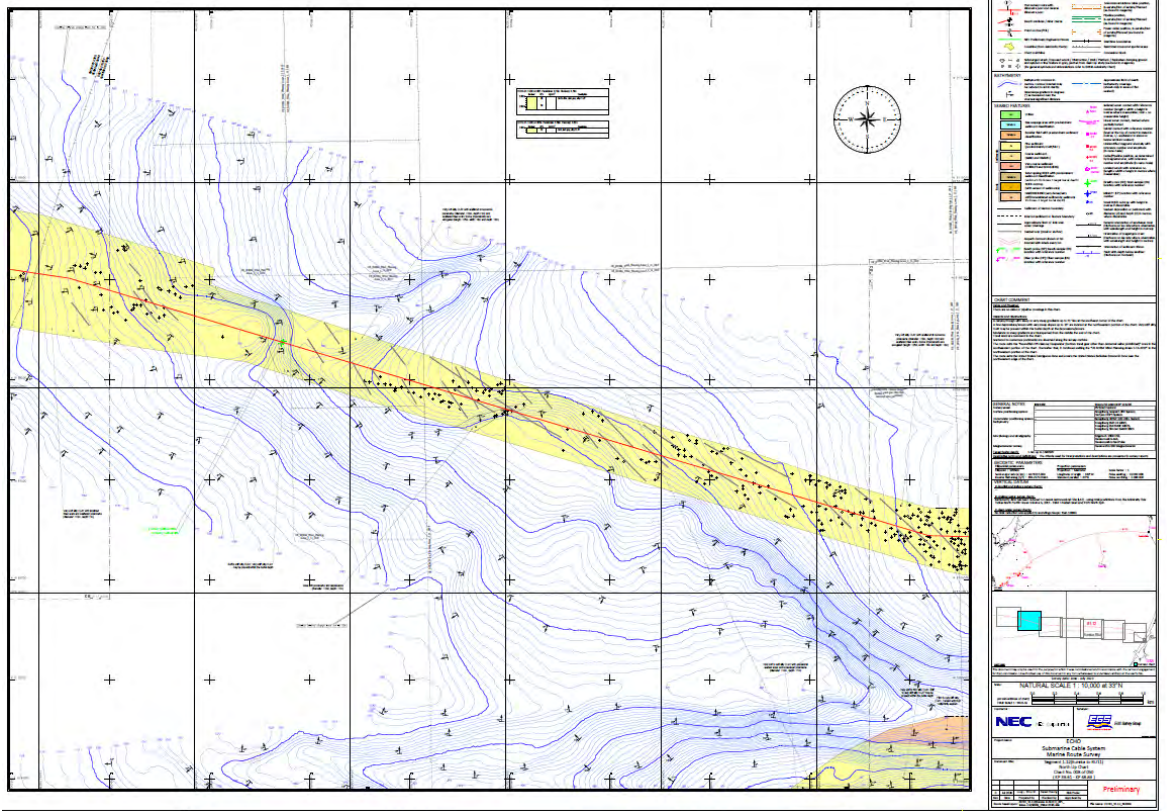
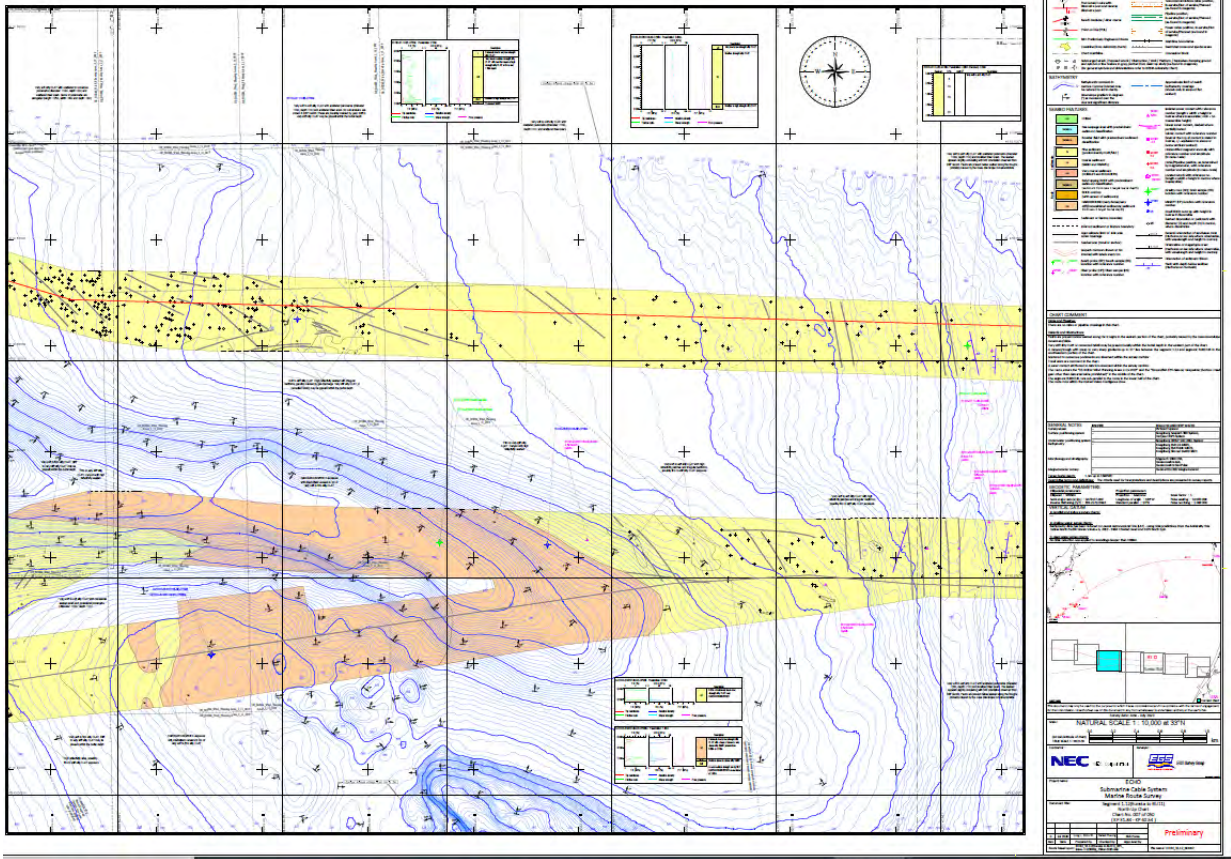


Exhibit 7

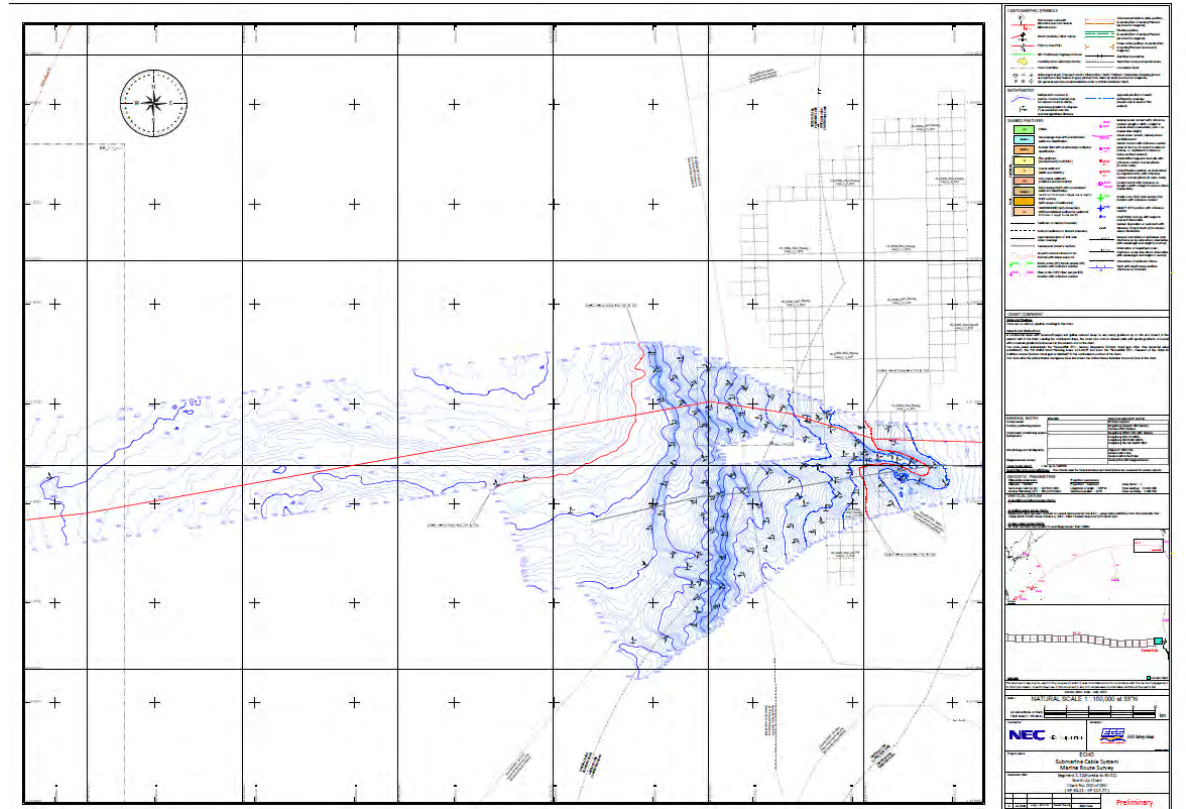
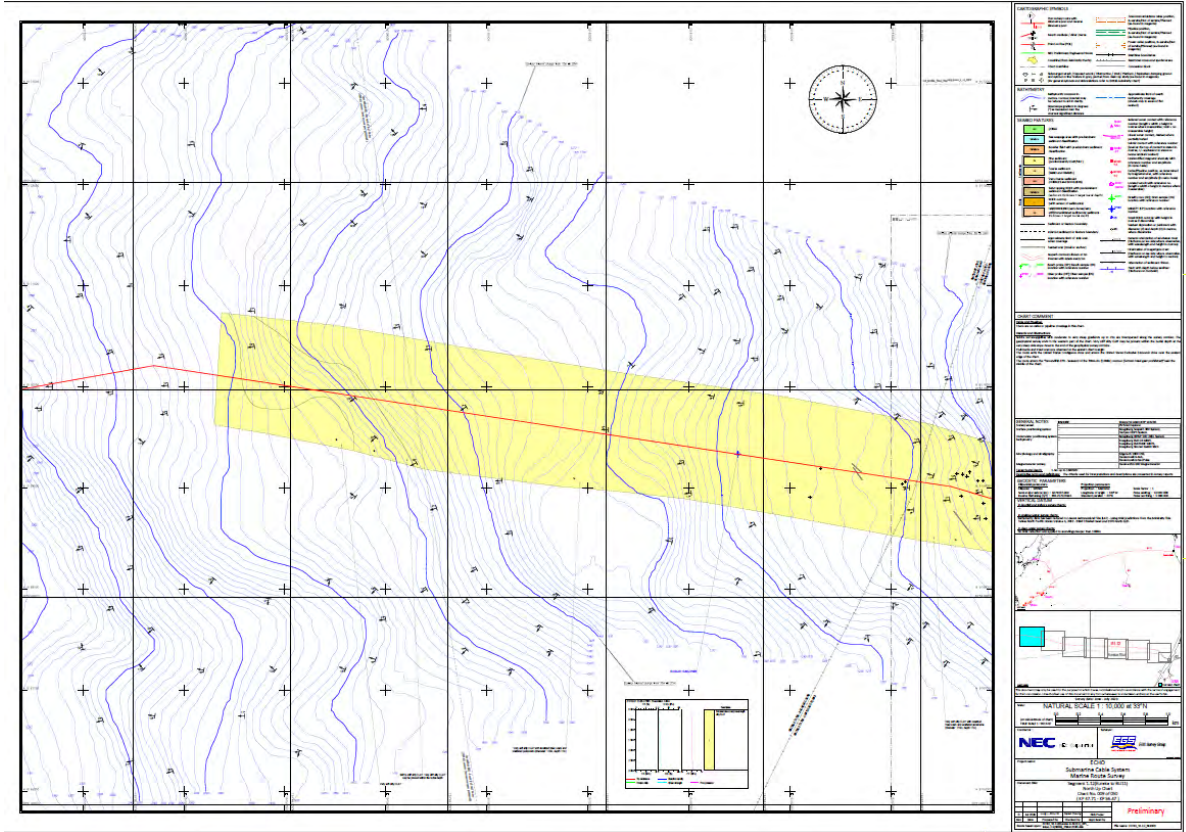


Exhibit 7

Phase 2

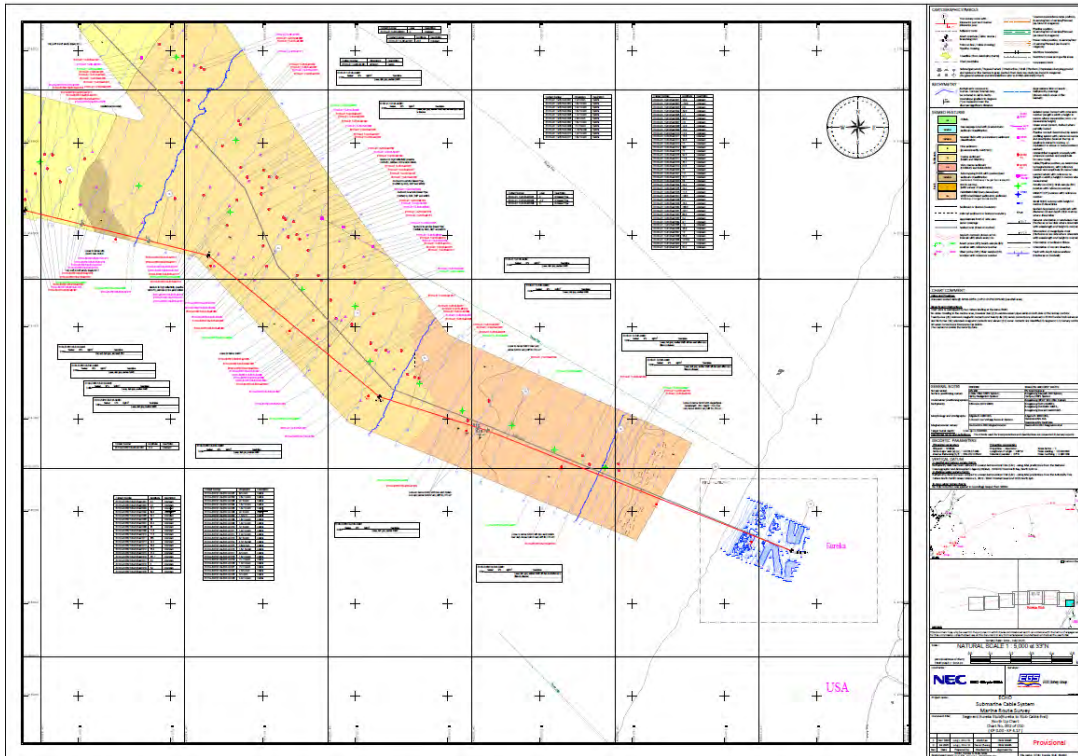
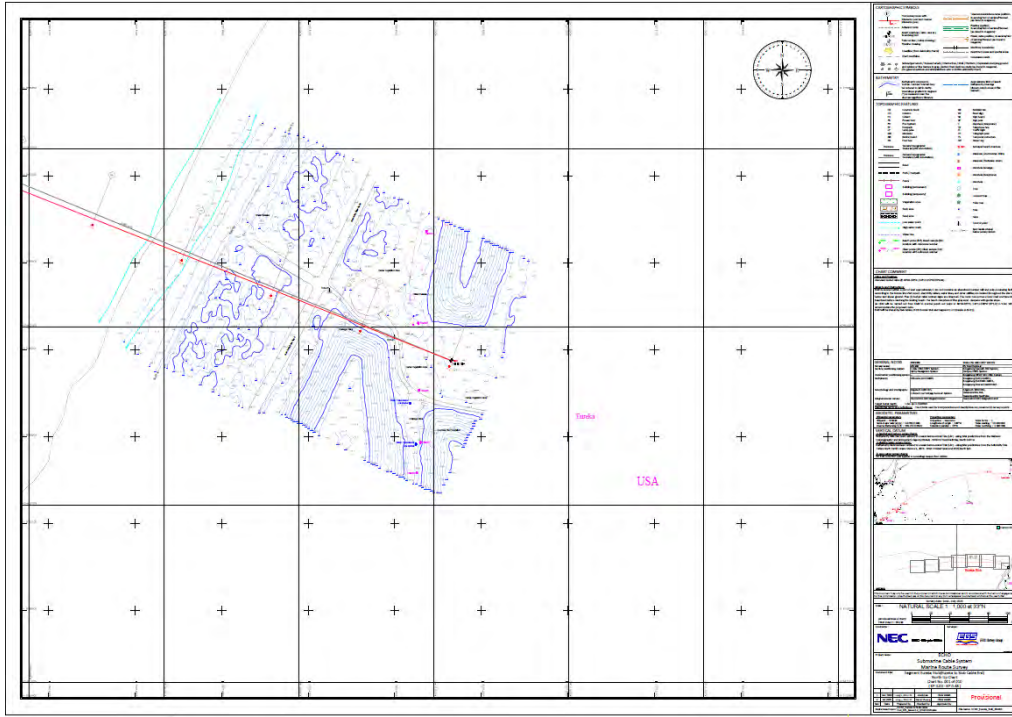


Exhibit 7

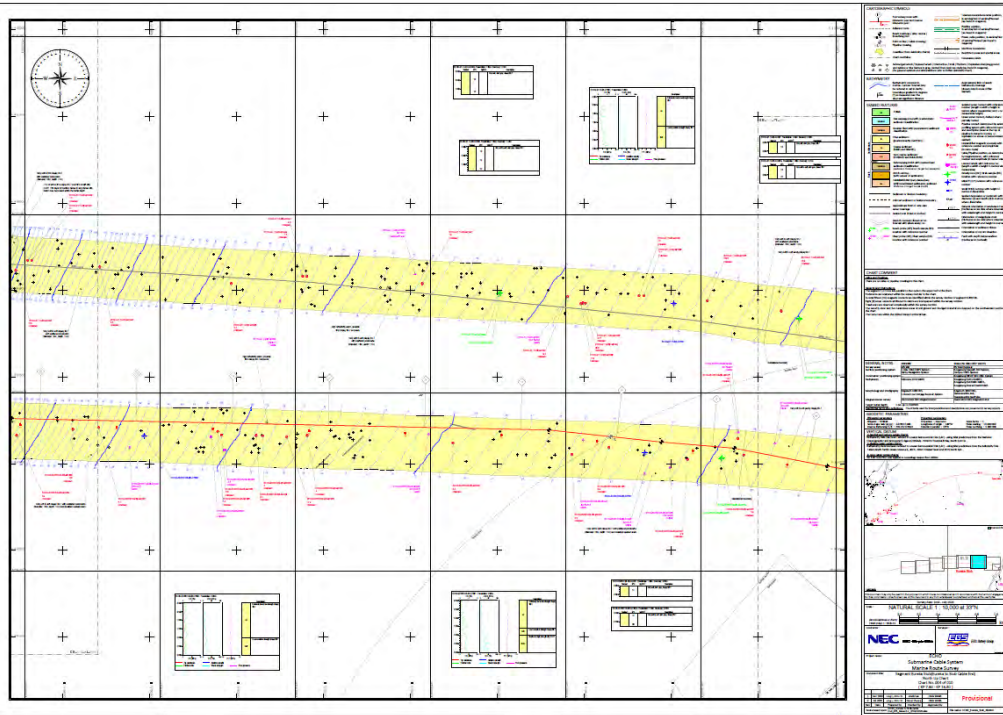
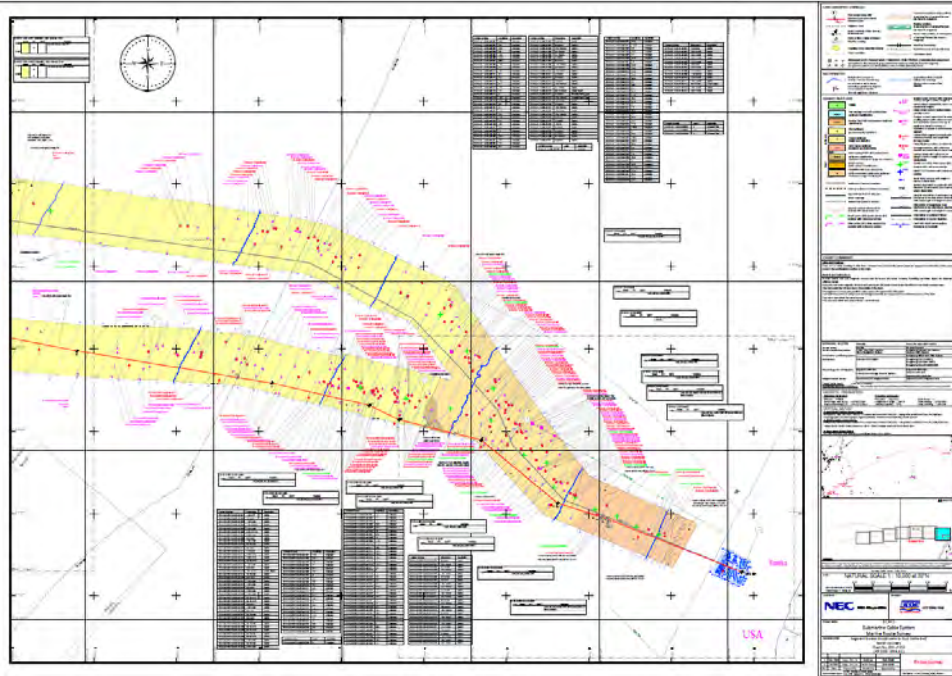


Exhibit 7

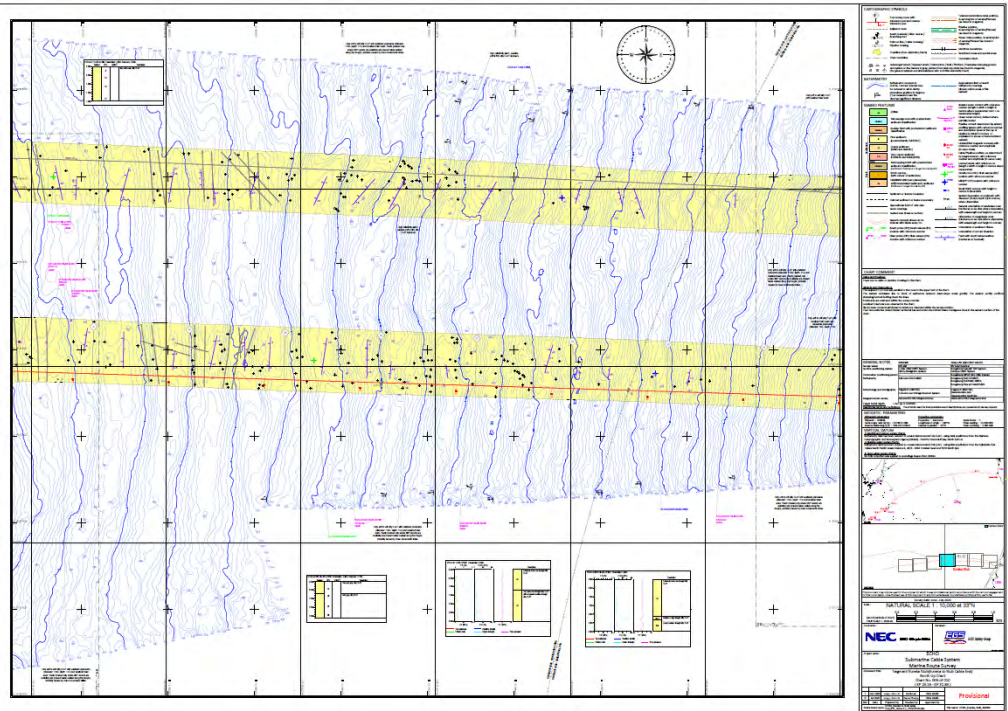
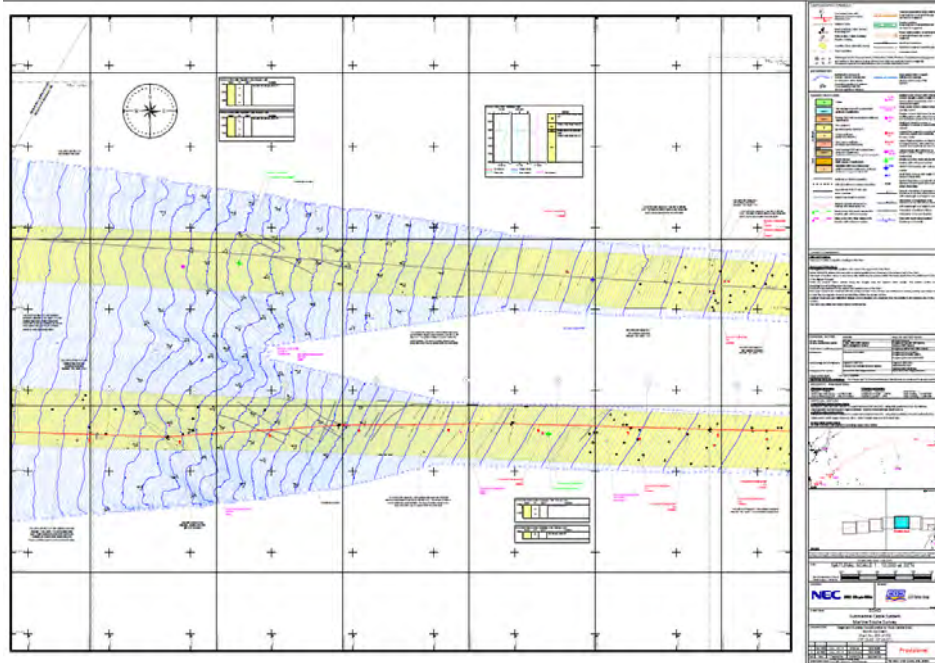


Exhibit 7

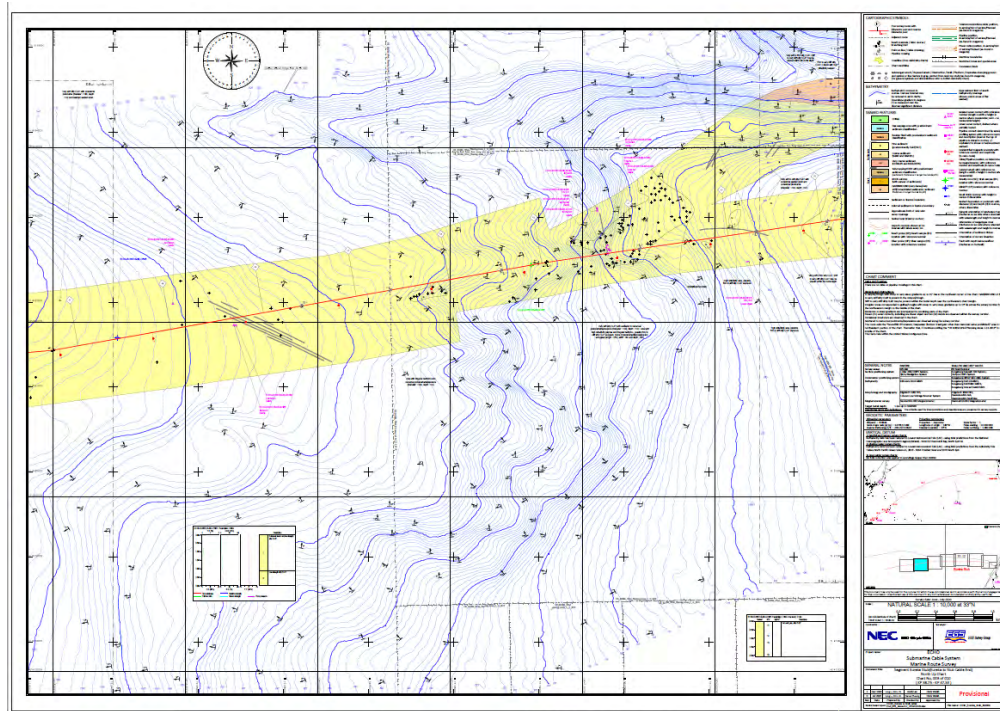
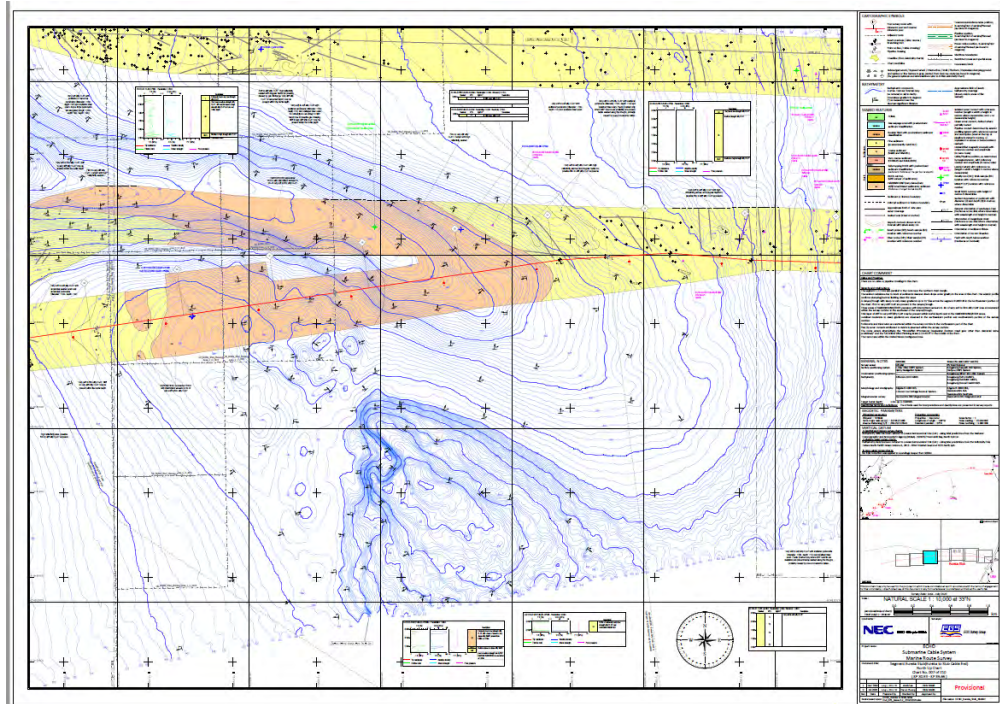


Exhibit 7

