

CALIFORNIA COASTAL COMMISSION
SOUTH CENTRAL COAST DISTRICT OFFICE
89 SOUTH CALIFORNIA STREET, SUITE 200
VENTURA, CA 93001-2801
VOICE (805) 585-1800
FAX (805) 641-1732



W12a

4-19-0826 (California Department of Parks and Recreation)

September 8, 2021

EXHIBITS

EXHIBIT 1 (VICINITY MAP)	2
EXHIBIT 2 (SITE AERIAL)	3
EXHIBIT 3 (JURISDICTION MAP)	4
EXHIBIT 4 (PROJECT PLANS)	5

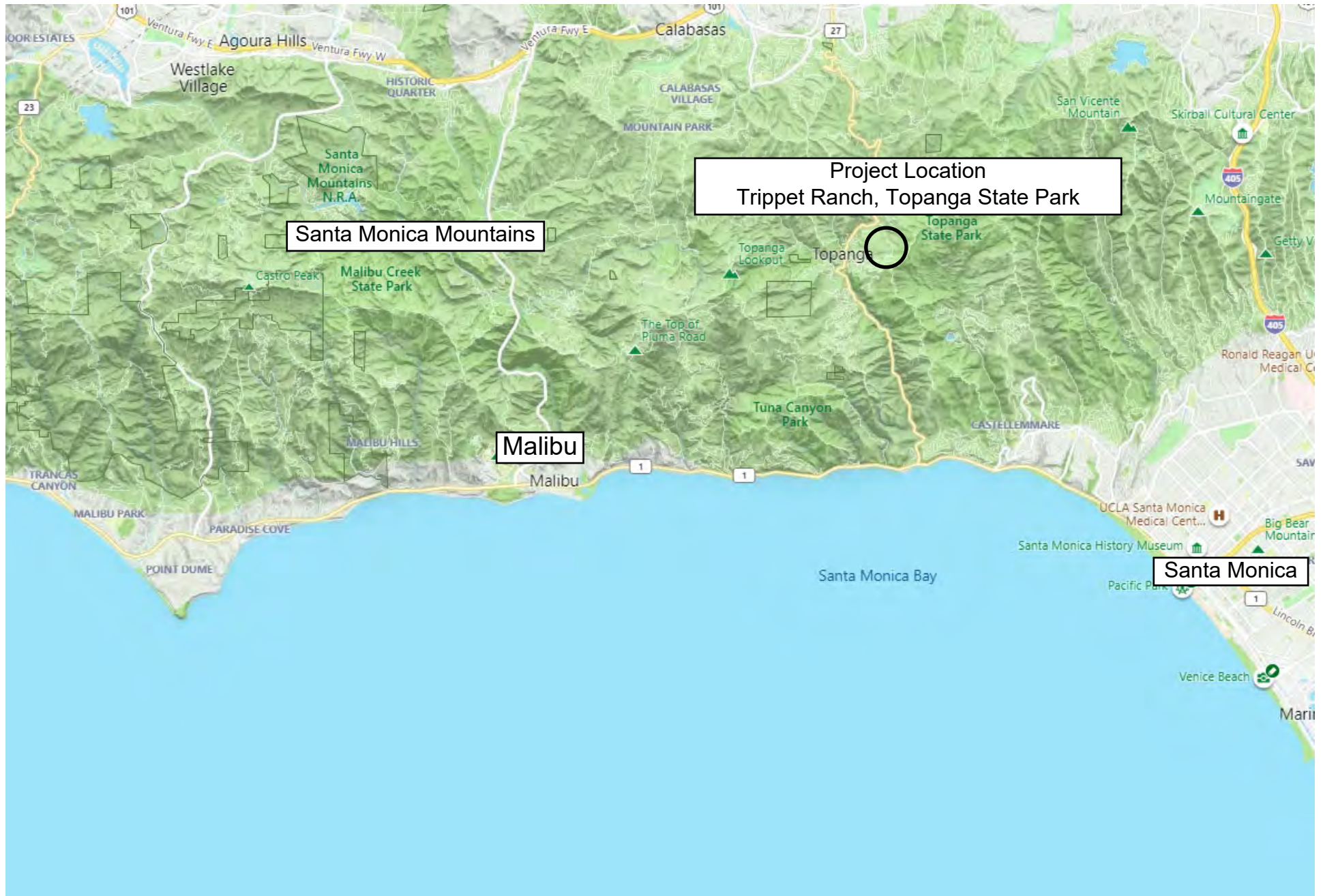


Exhibit 1
4-19-0826 (State Parks)
Vicinity Map



Project Location

Trippet

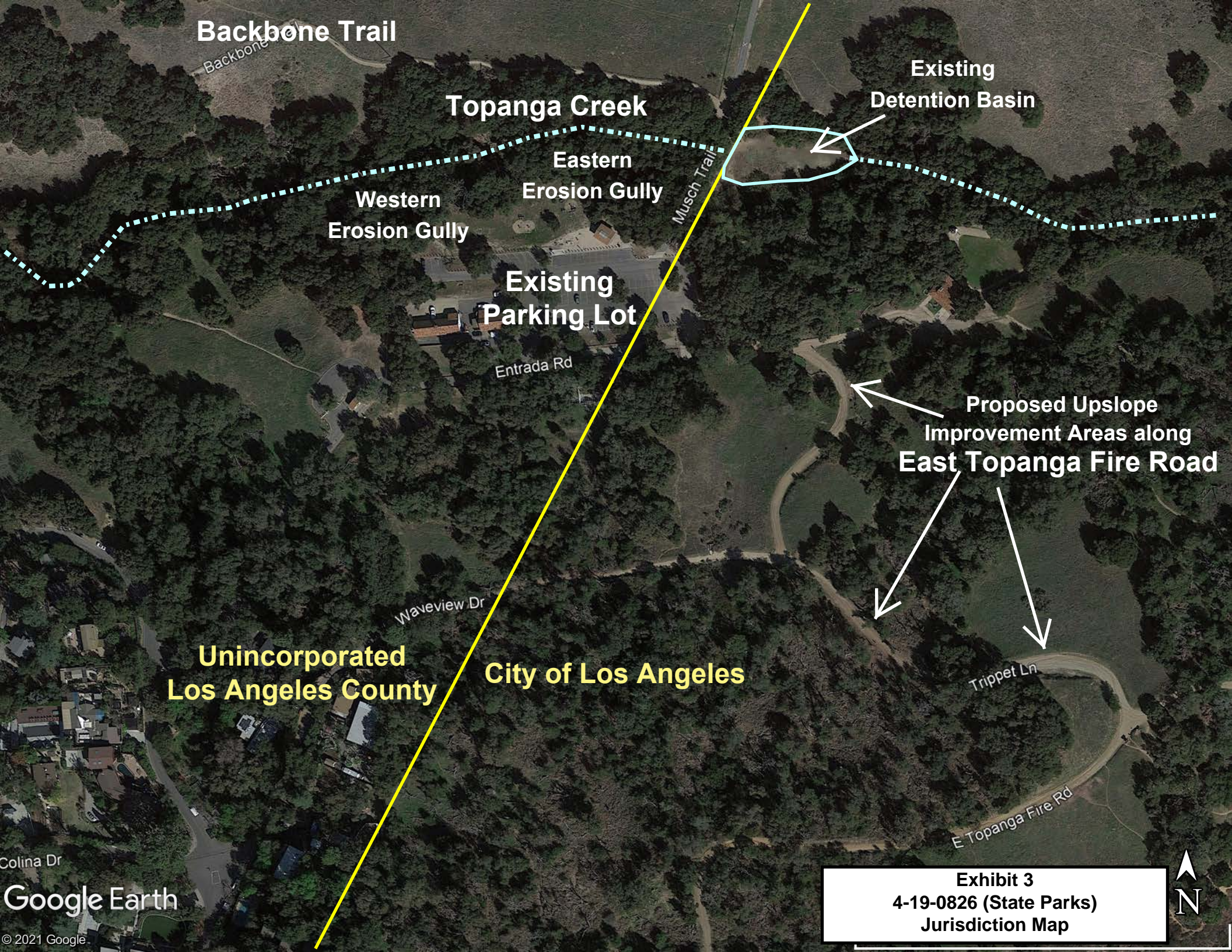
Google Earth

© 2021 Google

Exhibit 2
4-19-0826 (State Parks)
Aerial Vicinity Map



2000 ft



Backbone Trail

Topanga Creek

Existing
Detention Basin

Western
Erosion Gully

Eastern
Erosion Gully

Musich Trail

Existing
Parking Lot

Entrada Rd

Proposed Upslope
Improvement Areas along
East Topanga Fire Road

Unincorporated
Los Angeles County

City of Los Angeles

Waveview Dr

Trippet Ln

E Topanga Fire Rd

Colina Dr
Google Earth

Exhibit 3
4-19-0826 (State Parks)
Jurisdiction Map



TOPANGA STATE PARK

REHABILITATE TRIPPET RANCH PARKING LOT

PROJECT NO. 10929



ACQUISITION &
DEVELOPMENT DIVISION
One Capitol Mall
Sacramento, CA
95814-3229



CALIFORNIA STATE FIRE MARSHAL - APPROVED
Approval of this plan does not constitute approval of any omission of deviation from applicable regulations. Final approval is subject to field inspection. One set of approved plans shall be available on the project site at all times.
Reviewed by _____ Date _____
DPR ACCESS COMPLIANCE REVIEW
ACCESSIBILITY SECTION
CERTIFICATION # _____
Reviewed by _____ Date _____
ACCESSIBILITY COMPLIANCE AND STATE FIRE MARSHAL SIGNED ORIGINALS ARE ON FILE AT THE DEPARTMENT OF PARKS AND RECREATION, NORTHERN SERVICE CENTER.

DESIGNED: PC
DRAWN: PC
CHECKED: AS
DATE: 11/06/2019

REVISIONS	DATE

PROJECT SUMMARY:

OWNER
STATE OF CALIFORNIA, DEPARTMENT OF PARKS AND RECREATION

PARK DISTRICT:
ANGELES DISTRICT

PARK UNIT:
TOPANGA STATE PARK

SCOPE OF WORK:

THIS PROJECT WILL INSTALL STORM WATER MANAGEMENT FEATURES IN THE TRIPPET RANCH PARKING LOT, MAKE IMPROVEMENTS TO DRAINAGE UPSTREAM AND DOWNSTREAM OF THE PARKING LOT, REPAIR EROSION GULLIES, AND RECONFIGURE THE PARKING LOT TO BETTER SUPPORT THE HISTORIC ZONE.

CODE SUMMARY

TOTAL PROJECT SITE AREA : SF OR ACRE

BUILDING AREA: NA

OCCUPANCY TYPE: NA

CONSTRUCTION TYPE: NA

OCCUPANCY LOAD: NA

PREPARED BY

CALIFORNIA DEPARTMENT OF PARKS AND RECREATION
SOUTHERN SERVICE CENTER
NTC AT LIBERTY STATION BARRACKS 26
2757 TRUXTON RD.
SAN DIEGO CA 92106
PHONE: (619) 221-7060
FAX: (619) 221-7082

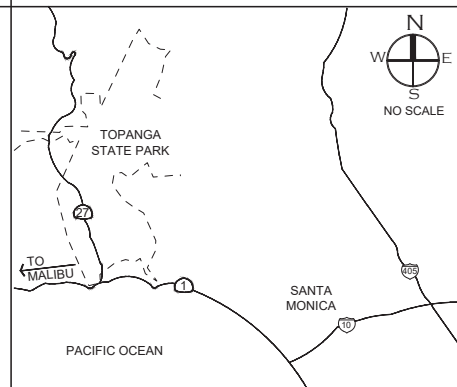
PREPARED FOR

ANGELES DISTRICT
1925 LAS VIRGENES RD.,
CALABASAS, CA 91302-1909
PHONE: (818) 880-0363
FAX: (818) 880-0359

PROJECT ADDRESS:

TRIPPET RANCH
20825 ENTRADA ROAD
TOPANGA, CA 90290
(310) 455-2465 EXT. 105

VICINITY MAP



APPLICABLE CODES

- 2016-CALIFORNIA BUILDING CODE (CBC)
- 2016-CALIFORNIA ELECTRICAL CODE (CEC)
- 2016-CALIFORNIA MECHANICAL CODE (CMC)
- 2016-CALIFORNIA PLUMBING CODE (CPC)
- 2016-CALIFORNIA ENERGY CODE
- 2016-CALIFORNIA FIRE CODE
- 2016-CALIFORNIA GREEN BUILDING CODE
- 2016-CALIFORNIA REFERENCE STANDARD CODE
- 2016-CALIFORNIA REFERENCE STANDARD CODE
- CCR-TITLE 19PUBLIC SAFETY: DIVISION 1 STATE FIRE MARSHAL
- 2019 NFPA 13-INSTALLATION OF FIRE SPRINKLER
- 2019 NFPA 14 INSTALLATION OF STANDPIPE AND HOSE SYSTEM
- 2019 NFPA 20 INSTALLATION OF STATIONARY PUMPS FOR FIRE PROTECTION
- 2019 NFPA 24INSTALLATION OF PRIVATE FIRE SERVICES MAINS AND THEIR APPURTENANCE
- 2013 25 NFPA CALIFORNIA EDITION, INSPECTION, TESTING AND MAINTENANCE OF WATER BASED FIRE PROTECTION SYSTEMS
- 2019 NFPA 72- NATIONAL FIRE ALARM AND SIGNALING CODE "AS AMENDED BY CALIFORNIA" CSFM
- 2016 CALIFORNIA GREEN BUILDING STANDARDS CODE (CGBSC) - SEE SPECIFICATIONS APPENDIX

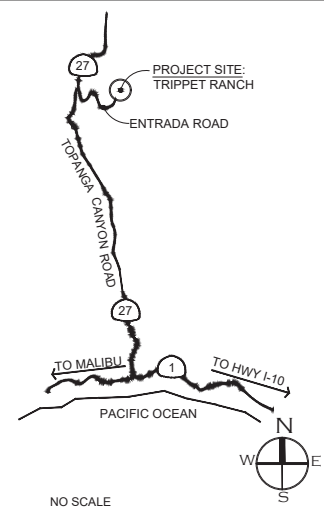
DRAWING INDEX

SHEET LIST TABLE

SHEET DRAWING NUMBER	SHEET TITLE	SHEET NUMBER
001	TITLE SHEET	T-1
002	ABBREVIATIONS AND FIRE CODE	G-1
003	GENERAL NOTES AND ACCESSIBILITY REQUIREMENTS	G-2
004	ACCESSIBILITY DETAILS	G-3
005	ACCESSIBLE PATH OF TRAVEL	G-4
006	GENERAL NOTES & SYMBOLS	C-0
007	SITE KEY & DRAWING INDEX	C-1
008	PARKING LOT - EXISTING CONDITIONS & PROJECT SURVEY CONTROL	C-2.1
009	PARKING LOT - DEMOLITION PLAN	C-2.2
010	PARKING LOT - SITE PLAN	C-2.3
011	PARKING LOT GRADING PLAN	C-2.4A
012	PARKING LOT DETAILED GRADING PLAN	C-2.4B
013	PARKING LOT DRAINAGE PLAN	C-2.5
014	PARKING LOT - UTILITY PLAN	C-2.6
015	PARKING LOT - HORIZONTAL CONTROL PLAN	C-2.7A
016	PARKING LOT - ENLARGED HORIZONTAL CONTROL PLAN	C-2.7B
017	DOWNSLOPE IMPROVEMENTS (WEST) - SITE PLAN	C-3.1
018	DOWNSLOPE IMPROVEMENTS (WEST) - GRADING AND DRAINAGE PLAN	C-3.2
019	DOWNSLOPE IMPROVEMENTS (WEST) - HORIZONTAL CONTROL PLAN	C-3.3
020	DOWNSLOPE IMPROVEMENTS (EAST) - SITE PLAN	C-4.1
021	DOWNSLOPE IMPROVEMENTS (EAST) - GRADING & DRAINAGE PLAN	C-4.2

022	DOWNSLOPE IMPROVEMENTS (EAST) - HORIZONTAL CONTROL PLAN	C-4.3
023	UPSLOPE IMPROVEMENTS - BASE BID	C-5.1A
024	UPSLOPE IMPROVEMENTS - DEDUCTIVE ALTERNATIVE	C-5.1B
025	HORIZONTAL CONTROL TABLES	C-6.1
026	CONSTRUCTION DETAILS	C-7.1
027	CONSTRUCTION DETAILS	C-7.2
028	CONSTRUCTION DETAILS	C-7.3
029	CONSTRUCTION DETAILS	C-7.4
030	PROFILES AND CONSTRUCTION DETAILS	C-7.5
031	PROFILES AND CONSTRUCTION DETAILS	C-7.6
032	CONSTRUCTION DETAILS	C-7.7
033	CONSTRUCTION DETAILS	C-7.8
034	CONSTRUCTION DETAILS	C-7.9
035	CONSTRUCTION DETAILS	C-7.10
036	CONSTRUCTION DETAILS	C-7.11
037	LANDSCAPE CONSTRUCTION DETAILS	L-1.1
038	LANDSCAPE CONSTRUCTION DETAILS	L-1.2
039	IRRIGATION PLAN	I-1.1
040	IRRIGATION NOTES AND LEGEND	I-2.1
041	IRRIGATION DETAILS	I-2.2
042	IRRIGATION DETAILS	I-2.3
043	IRRIGATION DETAILS	I-2.4
044	IRRIGATION DETAILS	I-2.5
045	LANDSCAPE PLANTING PLAN	LP-1.1
046	PLANTING ENLARGEMENT - SWALE PLANTING	LP-1.2
047	PLANTING ENLARGEMENT - SWALE PLANTING	LP-1.3
048	PLANT LEGEND AND NOTES	LP-2.1
049	PLANTING DETAILS	LP-2.2

LOCATION MAP



TOPANGA STATE PARK
REHABILITATE TRIPPET RANCH PARKING LOT
TITLE SHEET

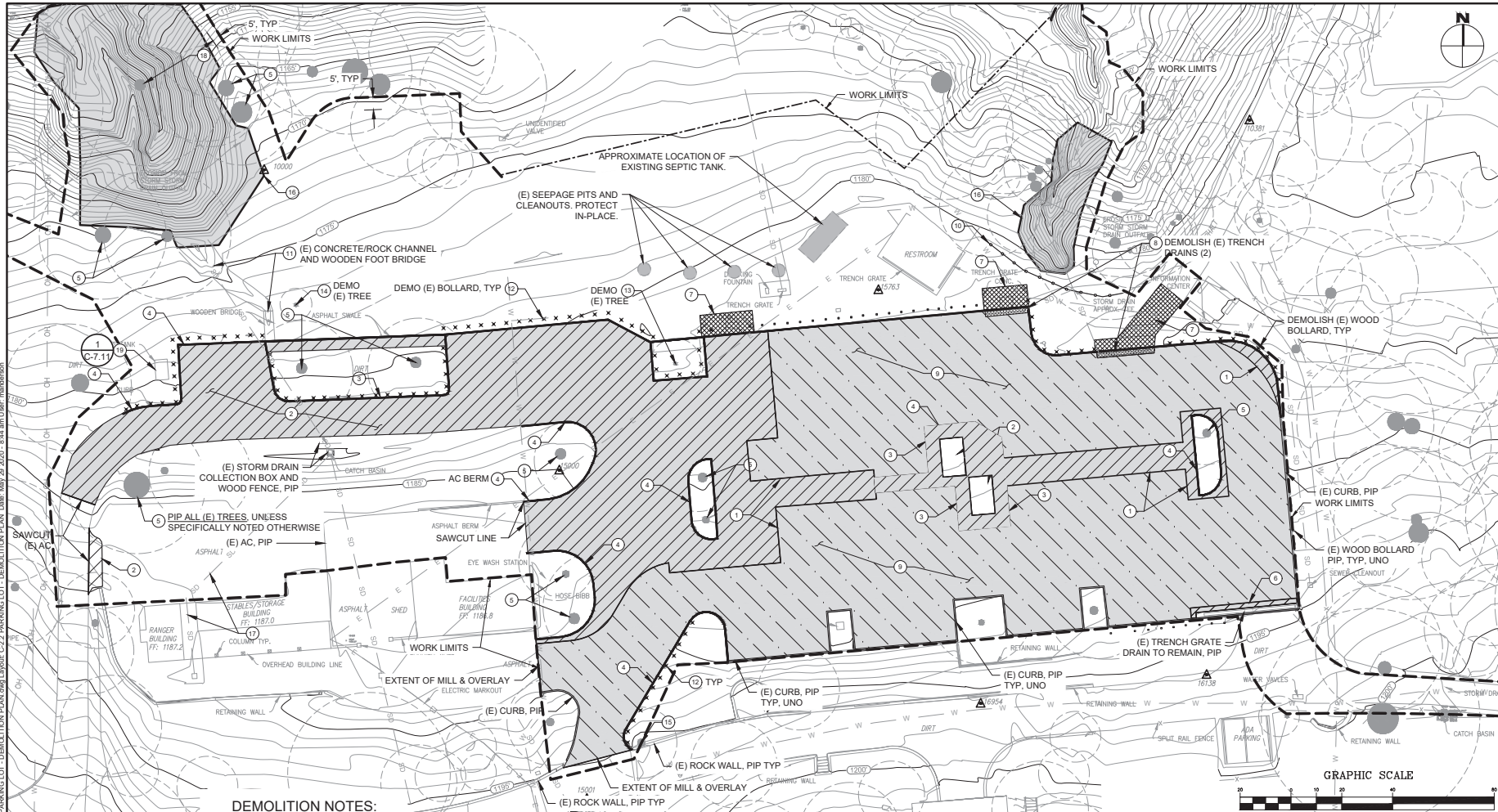
10929.001

SHEET NO.

T-1

001 OF 049

Exhibit 4
4-19-0826 (State Parks)
Project Plans



DEMOLITION NOTES:

- 1 SAWCUT (E) AC 12" MIN BEYOND EDGE OF ALL (N) IMPROVEMENTS, OR AS SHOWN ON PLANS OR CONSTRUCTION DETAILS (EXAMPLE: NEW RETAINING WALL REQUIRES AC TO BE CUT 30" MIN BEYOND FACE OF CURB). SEE HORIZONTAL CONTROL PLANS FOR LOCATION AND LAYOUT OF NEW IMPROVEMENTS.
- 2 AREA OF PREVIOUSLY REMOVED TREES. REMOVE ANY REMAINING ROOTS GREATER THAN 1.5" IN DIAMETER WITHIN DEMO FOOTPRINT. FILL RESULTING EXCAVATIONS WITH COMPACTED ENGINEERED FILL. REPORT SIGNIFICANT REMAINING ROOTS TO STATE REPRESENTATIVE.
- 3 SAWCUT 5 FEET, MINIMUM, OR PER DEMOLITION NOTE #1, BEYOND OUTER EDGE OF (E) PLANTERS TO BE REMOVED.
- 4 DEMOLISH (E) CONCRETE CURB OR AC BERM.
- 5 PROTECT ALL TREES IN PLACE. UNO. WORK SHALL BE COMPLETED IN ACCORDANCE W/ CONSTRAINTS AND MITIGATIONS SPECS.
- 6 DEMOLISH (E) AC FOR (N) CONTAINMENT BUMP PER PLAN/DETAILS
- 7 DEMOLISH EXISTING CONCRETE.
- 8 DEMOLISH EXISTING TRENCH GRATE DRAIN. CAP AND ABANDON EXISTING STORM DRAIN LINE IN-PLACE.
- 9 MILL (E) AC TO A DEPTH OF 1-INCH. CLEAN SURFACE. SEAL ALL CRACKS, AND PLACE TACK COAT PER PROJECT PLANS AND SPECIFICATIONS. AC OVERLAY SHALL BE 2" THICK. AC MILL AND OVERLAY SHALL BE PERFORMED AT THE END OF THE PROJECT. AFTER ALL IMPROVEMENTS HAVE BEEN CONSTRUCTED AND NO MORE HAULING OR OFF-HAULING TRUCKS ARE NEEDED.
- 10 REMOVE & SALVAGE (E) WOOD FENCE AND ASSOCIATED FENCE POST FOUNDATIONS TO THE EXTENT REQUIRED TO PERFORM PROJECT WORK. REPLACE FENCINGS AT END OF PROJECT.
- 11 DEMOLISH EXISTING WOOD BRIDGE AND CONCRETE/ROCK LINED-CHANNEL.
- 12 DEMOLISH EXISTING BOLLARD AND ASSOCIATED FOUNDATION.
- 13 REMOVE & DISPOSE (E) OAK TREE (DBH = 14"+).
- 14 REMOVE & DISPOSE (E) OAK TREE (DBH = 8"+).

- 15 TRIM (E) OLIVE TREE AND SURROUNDING SHRUBS TO ALLOW FOR CONSTRUCTION OF NEW CURB AND PAVEMENT. REMOVE ROOTS AS APPROVED BY ARBORIST & WRITTEN APPROVAL FROM STATE'S REPRESENTATIVE PER TREE PROTECTION SPECIFICATION.
- 16 CLEAR LOOSE SOIL AND DEBRIS FROM THE TWO EXISTING EROSION GULLIES. CLEAR AND EXCAVATE AREA IN ACCORDANCE WITH REMEDIAL GRADING PER GEOTECHNICAL REPORT. SEE EAST AND WEST DOWNSLOPE IMPROVEMENT SHEETS FOR ADDITIONAL INFORMATION.
- 17 CONFIRM (E) SD LINE IS ROUTED AS SHOWN ON PLANS NOTIFY STATE IMMEDIATELY IF LINE DIFFERS FROM WHAT IS SHOWN ON PLANS.
- 18 REMOVE & DISPOSE (E) 24" OAK TREE. EXCAVATE EG AS REQUIRED TO ACHIEVE FINISHED SUBGRADE FOR ALL IMPROVEMENTS.
- 19 (E) SEPTIC TANK, PIP, AND INSTALL PROTECTIVE SLAB PER DETAIL.

LEGEND:

- SAWCUT AC, REMOVE, AND DISPOSE (E) AC AND UNDERLYING AB. SEE NOTE 1 HEREON.
- MILL, CRACK SEAL, AND OVERLAY (E) AC, PER DETAIL REFERENCED ON SITE PLAN.
- DEMOLISH (E) CURB (BOTH AC AND CONCRETE)
- EXISTING CONCRETE FLATWORK TO BE DEMOLISHED TO DEPTH OF SUBGRADE FOR NEW SURFACING.
- CLEAR AND GRUB BOTH EROSION AREAS IN (E) EROSION GULLIES. SEE NOTES AND DETAILS FOR SURFACE PREPARATION & REQUIREMENTS.
- DEMOLISH (E) WOOD BOLLARD
- WORK LIMITS (5' BEYOND EDGE OF IMPROVEMENTS, UNO ON PLANS OR SPECS
- OVERHEAD ELECTRICAL

GRAPHIC SCALE

(IN FEET)
1 inch = 20 ft.

SEE SHEET C-1 FOR SITE KEY, GENERAL DEMOLITION NOTES, AND OTHER DETAILS.



DIAL TOLL FREE
1-800-227-2600
AT LEAST TWO DAYS
BEFORE YOU DIG

UNDERGROUND SERVICE ALERT OF SOUTHERN CALIFORNIA



ACQUISITION &
DEVELOPMENT DIVISION
One Capitol Mall
Sacramento, CA
95814-3229



CALIFORNIA STATE FIRE INSURANCE APPROVED
Approval of this plan does not authorize or
approve any omission of deviation from
applicable regulations. First approval is
subject to field inspection. One set of
approved plans shall be available on the
project site at all times.

Reviewed by _____ Date _____
CPR ACCESS COMPLIANCE REVIEW
ACCESSIBILITY SECTION
CERTIFICATION # _____

Reviewed by _____ Date _____
ACCESSIBILITY COMPLIANCE AND STATE FIRE
INSURANCE. SEENED ORIGINALS ARE ONFILE AT
THE DEPARTMENT OF PARKS AND RECREATION,
NORTHERN SERVICE CENTER.

DESIGNED: MA
DRAWN: MA
CHECKED: VL/BP
DATE: 11/06/2019

REVISIONS	DATE

TOPANGA STATE PARK
TRIPPE RANCH PARKING LOT

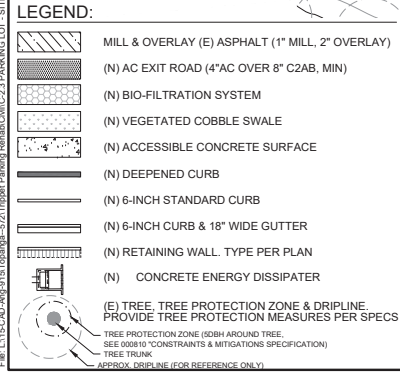
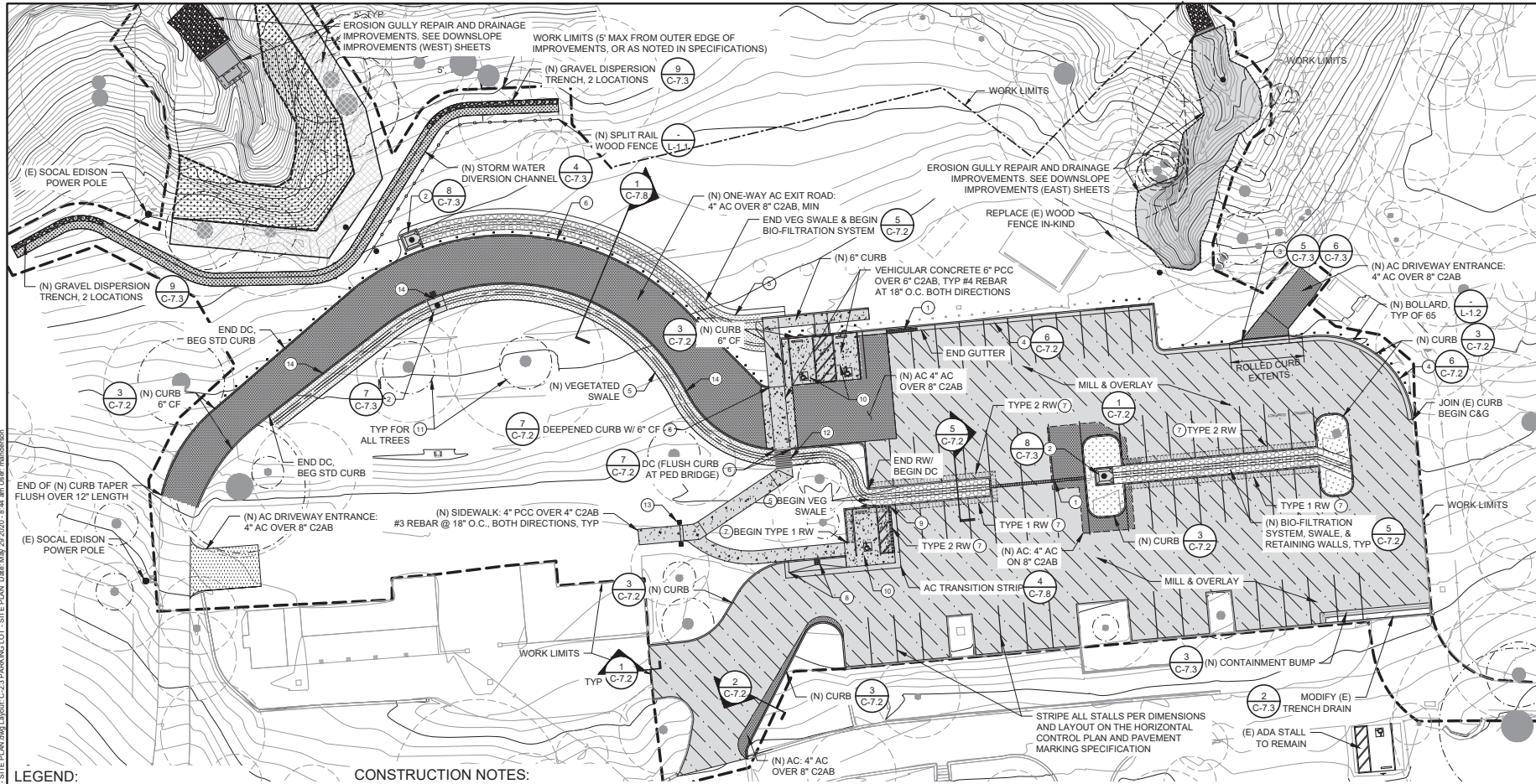
PARKING LOT - DEMOLITION PLAN

10929 090

SHEET NO.

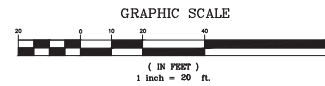
C-2.2

090 OF 049



CONSTRUCTION NOTES:

- (N) LINEAR TRENCH DRAIN
- (N) CONCRETE STORM DRAIN COLLECTION APRON WITH OVERFLOW STORM DRAIN INLET (MANHOLE OR CATCH BASIN STYLE, AS NOTED ON GRADING & DRAINAGE PLANS).
- (N) ROLLED CURB & GUTTER AND TRANSITION PER DETAILS.
- (N) CURB AND GUTTER, PER DETAILS.
- (N) VEGETATED SWALE, PER LANDSCAPE PLANS. VEGETATED SWALE SHALL HAVE THE SAME CROSS SECTIONAL PROFILE AS THE SURFACE OF THE BIO-FILTRATION SYSTEM
- (N) DEEPEENED CURB PER DETAIL
- TYPE 1 ¹¹/_{C-7.3} OR TYPE 2 ¹²/_{C-7.3} RETAINING WALL PER DETAILS
- (N) CATCH BASIN AND CONCRETE DRAINAGE APRON: 6" PCC/6" C2AB SEE GRADING AND DRAINAGE PLAN SHEETS FOR ADDITIONAL INFORMATION.
- DRAINAGE BLOCK-OUTS IN CURB, PER DETAIL ³/_{C-7.8}
- (N) ACCESSIBLE PARKING STALL(S) AND VEHICULAR CONCRETE: 6" PCC OVER 6" C2AB, #4 REBAR @ 18" O.C., BOTH DIRECTIONS
- TREE PROTECTION ZONE, APPLICABLE TO ALL WORK TO BE PERFORMED FOR THIS PROJECT. SEE 000810 "CONSTRAINTS AND MITIGATIONS" SPECIFICATION FOR ADDITIONAL INFORMATION AND TREE PROTECTION REQUIREMENTS. TREE PROTECTION ZONE IS REQUIRED FOR ALL TREES, INCLUDING THOSE NOT SHOWN ON PROJECT DRAWINGS.
- (N) PEDESTRIAN BRIDGE PER LANDSCAPE DETAIL, SHEET L-1.1
- (N) CHAIN BARRIER PER LANDSCAPE DETAIL, SHEET L-1.1
- 18" WIDE FLUSH CURB OPENING AT LOW POINT OF ROAD AND SPACED EVERY 15' ON-CENTER OF THE DEEPEENED CURB ALONG THE SOUTHERN EDGE OF (N) EXIT ROAD ALIGNMENT. ¹⁰/_{C-7.3}



SEE SHEET C-1 FOR SITE KEY, GENERAL DEMOLITION NOTES, AND OTHER DETAILS.



UNDERGROUND SERVICE ALERT OF SOUTHERN CALIFORNIA



ACQUISITION & DEVELOPMENT DIVISION
One Capitol Mall
Sacramento, CA
95814-3229



CALIFORNIA STATE FIRE MARSHAL APPROVED
Approval of this plan does not constitute approval of any omission of deviation from applicable regulations. Final approval is subject to field inspection. One set of approved plans shall be available on the project site at all times.
Reviewed by: Date:
DPR ACCESS COMPLIANCE REVIEW
ACCESSIBILITY SECTION
CERTIFICATION #
Reviewed by: Date:
ACCESSIBILITY COMPLIANCE AND STATE FIRE MARSHAL, SIGNED ORIGINALS ARE ON FILE AT THE DEPARTMENT OF PARKS AND RECREATION, NORTHERN REGIONAL CENTER.

DESIGNED: MA
DRAWN: MA
CHECKED: VL/BP
DATE: 11/06/2019

REVISIONS	DATE

TOPANGA STATE PARK
TRIPPET RANCH PARKING LOT
PARKING LOT - SITE PLAN

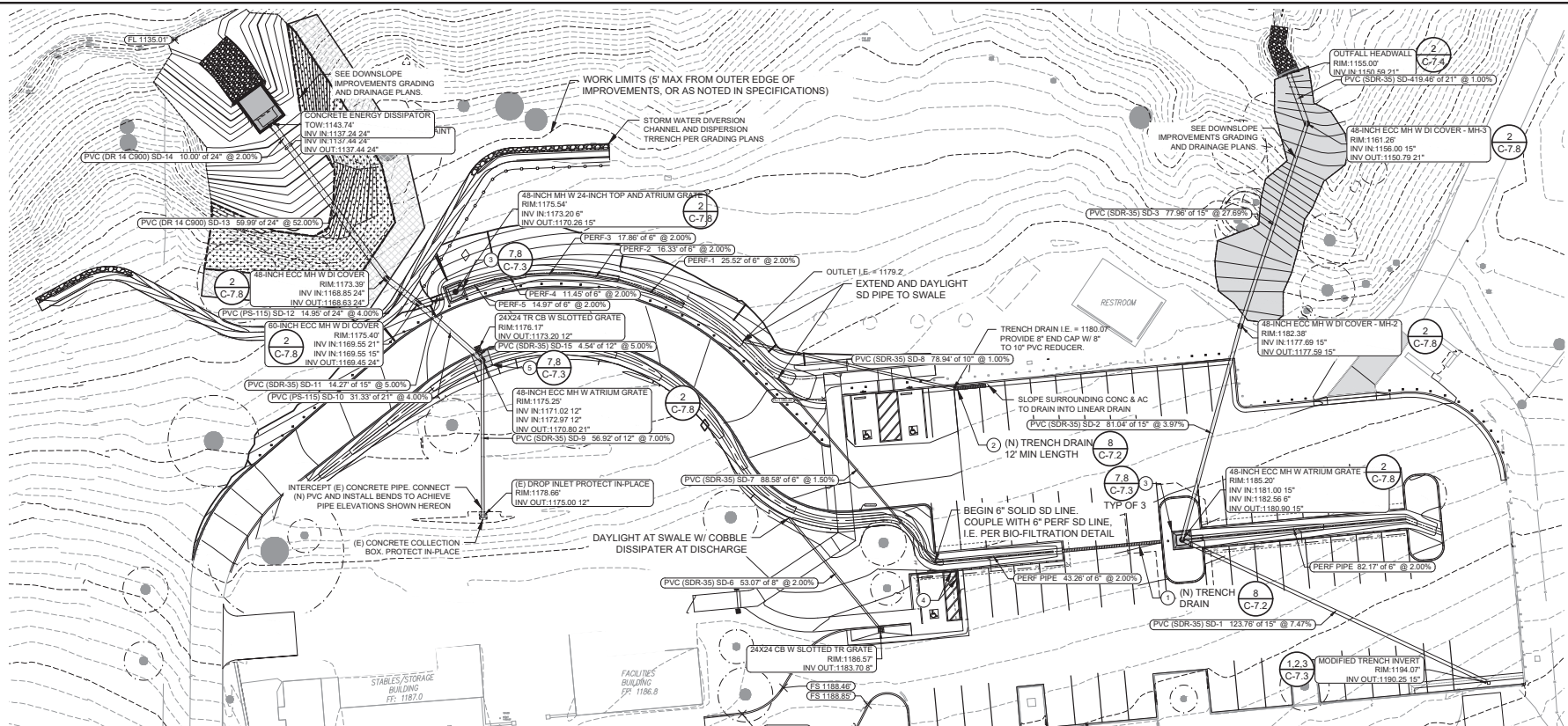
10929 010

SHEET NO.

C-2.3

010 OF 049

File: L:\15-CAD-Avg-9113 Topanga-271 Trippet Parking Detail.dwg User: C:\2.5 PARKING LOT DRAINAGE PLAN Date: May 29 2020 8:45 am User: maddison



CONSTRUCTION NOTES:

- ① (N) 12" WIDE TRAFFIC-RATED TRENCH DRAIN & GRATE. ACO KLASSIKORAIN TYPE K300, OR EQUAL. TRENCH DRAIN SHALL CONSIST OF THE FOLLOWING, OR EQUAL:
- 12" INTERNAL WIDTH W/ GALVANIZED STEEL EDGE CHANNEL (ACO DRAIN PRODUCT NUMBER: 76043)
 - CONSTANT DEPTH BOTTOM
 - INSTALL AT (E) GRADES W/ -0.4% MINIMUM SLOPE ALONG LENGTH OF TRENCH DRAIN
 - TOTAL LENGTH: 36 FEET
 - INSTALL PER MFR REQUIREMENTS & CONTRACT DOCUMENTS. USE MOST STRINGENT REQUIREMENTS AND DIMENSIONS, WHEN CONFLICTS EXIST (I.E. CONCRETE SUPPORT WIDTH)
 - GRATE: IRON, LOAD CLASS C (ACO TYPE 1760 LONGITUDINAL, PART #142173)
 - HIDDEN CONCRETE HAUNCH
- ② (N) 12" WIDE TRAFFIC-RATED TRENCH DRAIN & GRATE. ACO KLASSIKORAIN TYPE K300, OR EQUAL. TRENCH DRAIN SHALL CONSIST OF THE FOLLOWING, OR EQUAL:
- 12" INTERNAL WIDTH W/ GALVANIZED STEEL EDGE CHANNEL (ACO DRAIN PRODUCT NUMBER: 76043)
 - SLOPED CHANNEL. ORDER CHANNEL SECTIONS WITH INCREASING CHANNEL DEPTH THROUGHOUT ENTIRE LENGTH. ORDER ALL RECD OUTLETS AND PARTS FOR SYSTEM.
 - TOTAL LENGTH: 12 FEET
 - INSTALL PER MFR REQUIREMENTS & CONTRACT DOCUMENTS. USE MOST STRINGENT REQUIREMENTS AND DIMENSIONS, WHEN CONFLICTS EXIST (I.E. CONCRETE SUPPORT WIDTH)
 - GRATE: IRON, LOAD CLASS C (ACO TYPE 1760 LONGITUDINAL, PART #142173)
 - HIDDEN CONCRETE HAUNCH
 - POUR ADJACENT GUNCH CURB MONOLITHICALLY WITH THE CONCRETE CHANNEL SUPPORT. MATCH ADJACENT GRADES

- ③ (N) CONCRETE STORM DRAIN COLLECTION APRON WITH OVERFLOW STORM DRAIN INLET (MANHOLE OR CATCH BASIN STYLE, AS NOTED ON GRADING & DRAINAGE PLANS).
- ④ DRAINAGE BLOCK-OUTS IN CURB, PER DETAIL.
- ⑤ (N) CONCRETE STORM DRAIN COLLECTION APRON WITH OVERFLOW STORM DRAIN INLET, PER DETAIL, EXCEPT PROVIDE OPENINGS ON BOTH SIDES OF THE COLLECTION APRON.

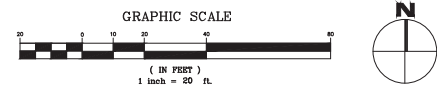
⑦ ⑧ ②
C-7.3 C-7.3 C-7.8

⑦ ⑧ ②
C-7.3 C-7.3 C-7.8

GENERAL NOTES:

1. ALL NEW STORM DRAIN AND OTHER UTILITIES SHALL BE INSTALLED PER STANDARD TRENCH DETAIL.

⑤ ⑥
C-7.8 C-7.8



DIAL TOLL FREE
1-800-227-2600
AT LEAST TWO DAYS
BEFORE YOU DIG

UNDERGROUND SERVICE ALERT OF SOUTHERN CALIFORNIA



ACQUISITION &
DEVELOPMENT DIVISION
One Capitol Mall
Sacramento, CA
95814-3229



CALIFORNIA STATE FIRE MARSHAL APPROVED
Approval of this plan does not constitute or
approve any omission of deviation from
applicable regulations. Final approval is
subject to field inspection. One set of
approved plans shall be available on the
project site at all times.
Reviewed by: Date:
DPR ACCESS COMPLIANCE REVIEW
ACCESSIBILITY SECTION
CERTIFICATION #
Reviewed by: Date:
ACCESSIBILITY COMPLIANCE AND STATE FIRE
MARSHAL. ISSUED ORIGINALS AND OUTLIES AT
THE DEPARTMENT OF PARKS AND RECREATION,
NORTHERN SERVICE CENTER.

DESIGNED: MA
DRAWN: MA
CHECKED: VLBP
DATE: 11/06/2019

REVISIONS	DATE

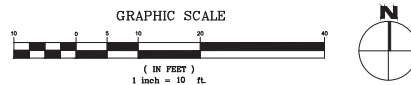
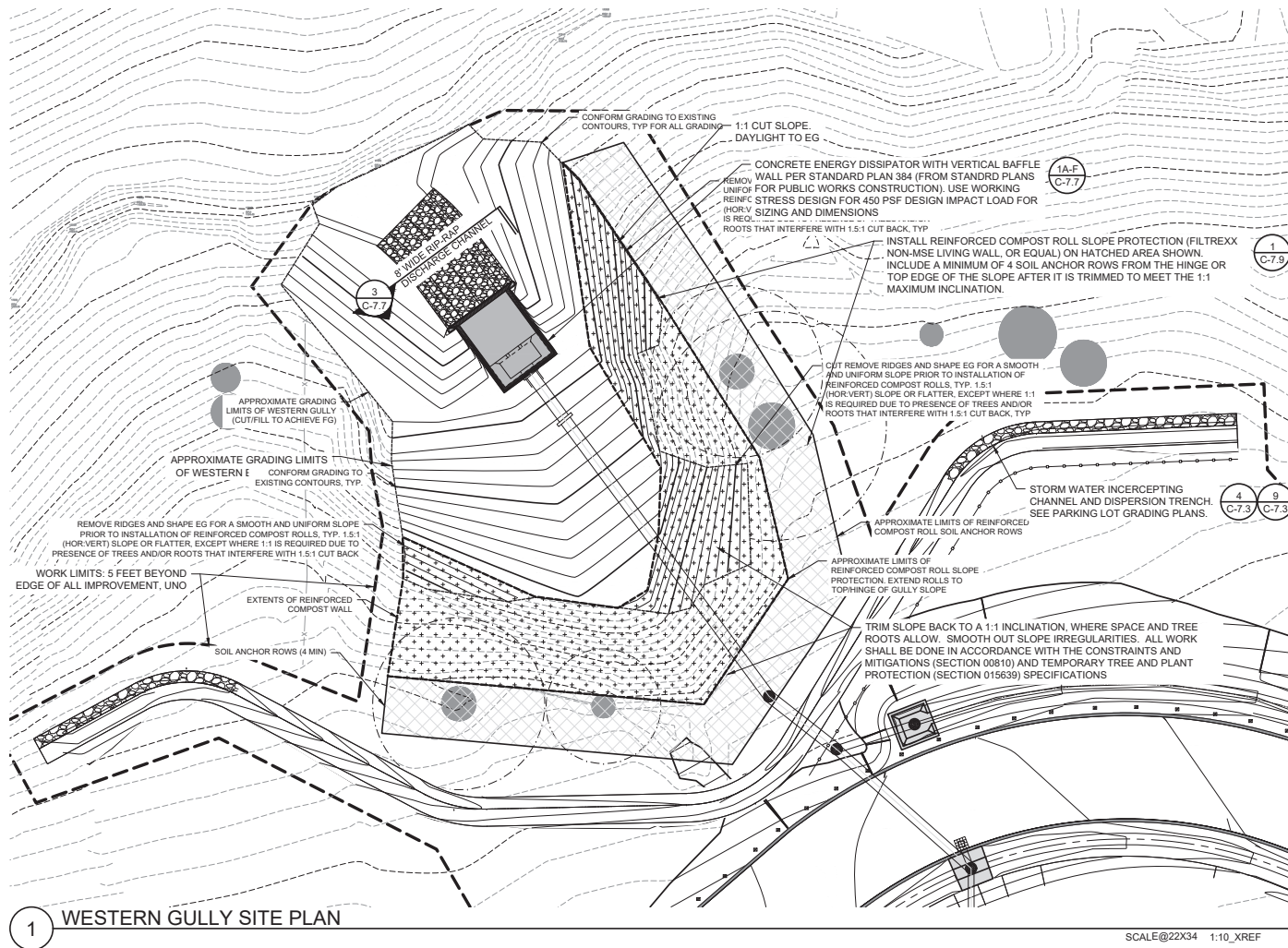
TOPANGA STATE PARK
TRIPPET RANCH PARKING LOT
PARKING LOT DRAINAGE PLAN

10929.013

SHEET NO.
C-2.5

013 OF 049

File: L:\15-CAD-Avg-912-Topanga-272-Trippe Parking EnhancCw-C-3.1-DOWNSLOPE IMPROVEMENTS (WEST) - SITE PLAN.dwg Layer: C-3.1 DATE: May 29, 2020 - 8:48 am User: manderson



LEGEND:



REINFORCED COMPOST ROLL SLOPE PROTECTION WALL

REINFORCED COMPOST ROLL ANCHOR ROW ZONE

SEE LEGEND ON CIVIL NOTES SHEETS FOR SYMBOLS NOT INCLUDED HEREON



ACQUISITION & DEVELOPMENT DIVISION
One Capitol Mall
Sacramento, CA
95814-3229



CALIFORNIA STATE FIRE MARSHAL APPROVED
Approval of this plan does not authorize or approve any omission of deviation from applicable regulations. Final approval is subject to field inspection. One set of approved plans shall be available on the project site at all times.
Reviewed by: Date:

DPR ACCESS COMPLIANCE REVIEW
ACCESSIBILITY SECTION
CERTIFICATION #

Reviewed by: Date:
ACCESSIBILITY COMPLIANCE AND STATE FIRE MARSHAL. SIGNED ORIGINALS ARE ONFILE AT THE DEPARTMENT OF PARKS AND RECREATION, NORTHERN SERVICE CENTER.

DESIGNED: MA
DRAWN: MA
CHECKED: VL/BP
DATE: 11/06/2019

REVISIONS	DATE

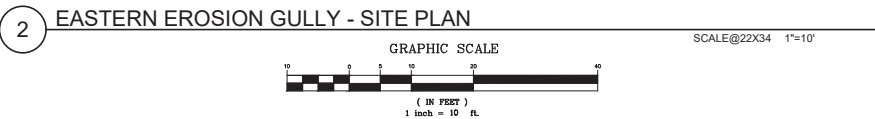
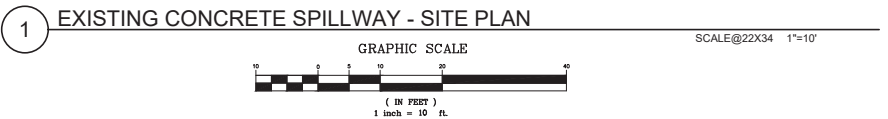
TOPANGA STATE PARK TRIPPE RANCH PARKING LOT DOWNSLOPE IMPROVEMENTS (WEST) - SITE PLAN

10929.017

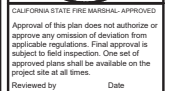
SHEET NO.

C-3.1

017 OF 049



TREE PROTECTION NOTES:
1. ALL TREES SHALL BE PROTECTED IN-PLACE, UNLESS NOTED OTHERWISE.
2. PERFORM ALL WORK IN ACCORDANCE WITH THE TEMPORARY TREE PROTECTION (SECTION 015639) AND CONTRAINTS & MITIGATIONS (SECTION 000810) SPECIFICATIONS.



DPR ACCESS COMPLIANCE REVIEW	
ACCESSIBILITY SECTION	
CERTIFICATION #	
Reviewed by	Date
ACCESSIBILITY COMPLIANCE AND STATE FIRE MARSHAL SIGNED ORIGINALS ARE ON FILE AT THE DEPARTMENT OF PARKS AND RECREATION, NORTHERN SERVICE CENTER	

DESIGNED:	MA
DRAWN:	MA
CHECKED:	VL/BP
DATE:	11/06/2019

△	REVISIONS	DATE

DOWNSLOPE IMPROVEMENTS
(EAST) - SITE PLAN

TOPANGA STATE PARK
TRIPPET RANCH PARKING LOT

10929.020

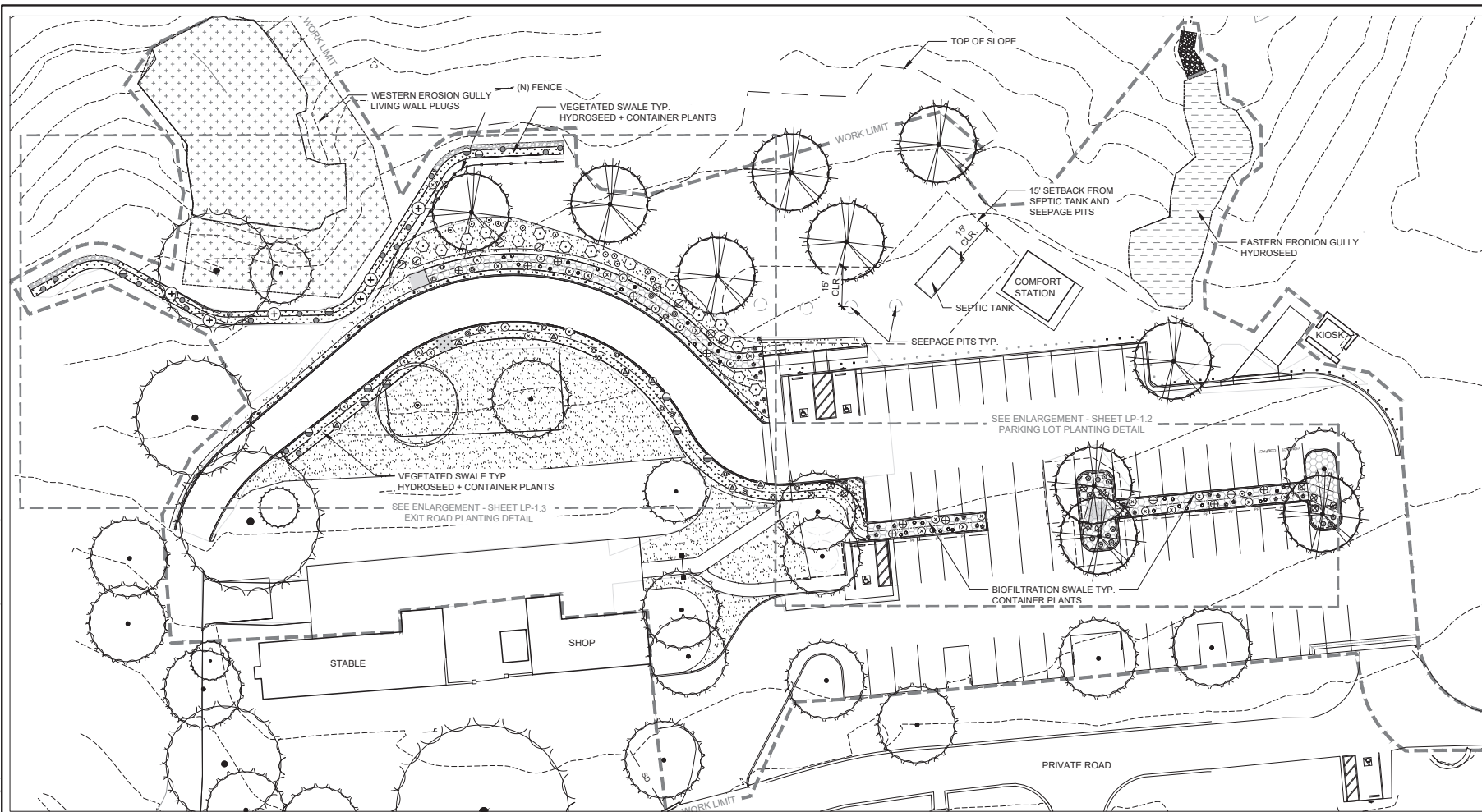
SHEET NO.
C 4 1

C-4.1

020 OF 049

SCALE@22X34 1" = 5' XREF

File: C:\Projects\County\Topanga\LP-1.1 LANDSCAPE PLANTING PLAN.dwg Layer: LP-1.1 LANDSCAPE PLANTING PLAN Date: July 01 2020 8:57 am User: jrdwms



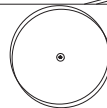
- KEYNOTES:
- VEGETATED SWALE - HYDROSEED
 - BIOFILTRATION SYSTEM.
 - BARK MULCH.
 - LIVING WALL (WESTERN EROSION GULLY)
 - EASTERN EROSION GULLY HYDROSEED



EXISTING OAK TREE TO PROTECT IN PLACE



OAK TREE - PROVIDE 15' BUFFER FROM SEPTIC SYSTEM.



EXISTING BLACK WALNUT TREE TO PROTECT IN PLACE

SEE SHEETS LP-1.2 & 1.3 FOR ENLARGED PLANTING PLANS.
SEE PLANT MATERIALS LEGEND SHEET LP-2.1



0 20 40 80
SCALE: 1" = 20'



ACQUISITION & DEVELOPMENT DIVISION
One Capitol Mall
Sacramento, CA
95814-3229



CALIFORNIA STATE FIRE MARSHAL - APPROVED
Approval of this plan does not authorize or approve any omission of deviation from applicable regulations. Final approval is subject to field inspection. One set of approved plans shall be available on the project site at all times.
Reviewed by: _____ Date: _____

SPR ACCESS COMPLIANCE REVIEW
ACCESSIBILITY SECTION
CERTIFICATION # _____
Reviewed by: _____ Date: _____

ACCESSIBILITY COMPLIANCE AND STATE FIRE MARSHAL SIGNED ORIGINALS ARE ON FILE AT THE DEPARTMENT OF PARKS AND RECREATION, NORTHERN SERVICE CENTER.

DESIGNED: PC
DRAWN: PC
CHECKED: AS
DATE: 11/06/2019

REVISIONS	DATE

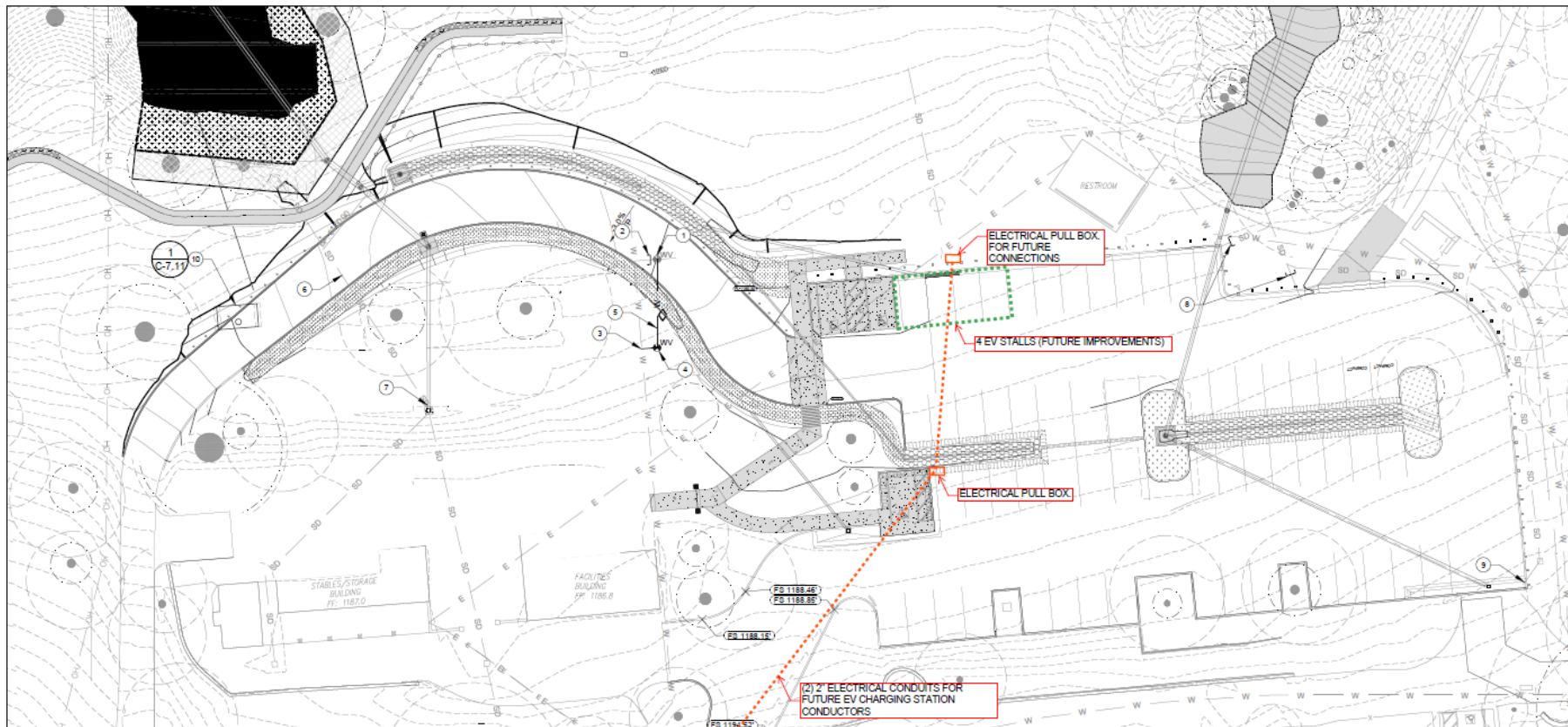
TOPANGA STATE PARK
REHABILITATE TRIPPETT RANCH PARKING LOT
LANDSCAPE PLANTING PLAN

10929.045

SHEET NO.

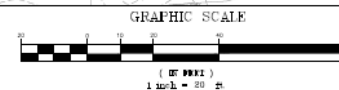
LP-1.1

045 OF 049



PARKING LOT UTILITY PLAN

EXISTING ELECTRICAL ROOM
(DOES NOT HAVE ELECTRICAL
CAPACITY TO PROVIDE EV CHARGING)



UTILITY NOTES:

1. REMOVE (E) BACKFLOW VALVE ASSEMBLY AND RELOCATE ASSEMBLY IN LOCATION SHOWN ON PLANS.
2. CUT, CAP, AND INSTALL THRUST BLOCK ON (E) STUB FROM MAIN WATER LINE. UTILITY LOCATIONS AND BRANCHES ARE BASED ON EXISTING PLANS. CONTRACTOR SHALL VERIFY THE LINE CONFIGURATIONS AND CONFIRM WHICH IS THE MAIN LINE TO MAINTAIN FUNCTION OF EXISTING LINES.
3. INSTALL (N) TEE IN AREA OF VALVE RELOCATION. MATCH SIZE AND MATERIAL OF (E) LINE. ASSUME 2" SCH80 PVC FOR BIDDING PURPOSES. CONFIRM MATERIAL AND SIZE PRIOR TO ORDERING MATERIALS.
4. RELOCATE (E) WATER VALVE ASSEMBLY AT LEAST 3 FEET AWAY FROM THE EDGE OF THE (N) VEGETATED SWALE. INSTALL THRUST BLOCKS AT ALL BENDS IN LINE.
5. INSTALL NEW WATER LINE FROM VALVE AND CONNECT TO (E) BRANCH LINE. CONTRACTOR SHALL CONFIRM PIPE NETWORK MAINTAINS EXISTING FUNCTIONALITY.
6. DEMOLISH (E) SD LINE WITHIN FOOTPRINT OF (N) IMPROVEMENTS. ABANDON IN PLACE ELSEWHERE.
7. CUT (E) STORM DRAIN LINE AND CONNECT TO (N) LINE WITH INVERTS SHOWN ON THE DRAINAGE PLAN. EXISTING CONCRETE COLLECTION BOX SHALL BE PROTECTED IN PLACE.
8. CUT AND CAP. ABANDON IN-PLACE. REMOVE AND DISPOSE (E) STORM DRAIN LINE ON CUT SIDE OF PIPE.
9. PLUG (E) STORM DRAIN LINE OUTLET PIPE. RECONFIGURE (E) TRENCH DRAIN PER PLANS.
10. (E) SEPTIC TANK, PIP, AND INSTALL PROTECTIVE SLAB PER DETAIL.

GENERAL NOTE

1. ALL EXISTING UTILITIES SHOWN ON PLANS ARE APPROXIMATE AND FOR REFERENCE ONLY. CONTRACTOR SHALL POTHOLE TO EXPOSE AND LOCATE ALL UTILITIES. UTILITIES SHOWN MAY NOT BE COMPLETE AND DO NOT SHOW UTILITY COMPANY LINES. CONTRACTOR SHALL CALL DIGALERT (USA SOUTHERN CALIFORNIA) TO HAVE ALL UTILITIES MARKED ON-SITE. ANY DAMAGE CAUSED TO EXISTING UTILITIES SHALL BE REPAIRED BY THE CONTRACTOR AT NO COST TO THE STATE.
2. CONTRACTOR SHALL RE-ROUTE ANY UTILITIES THAT CONFLICT WITH THE NEW IMPROVEMENTS AND STORM DRAIN UTILITY LINES.
3. SEE DRAINAGE AND UPSLOPE IMPROVEMENTS PLANS FOR ALL STORM DRAIN UTILITIES.

CONSTRUCTION NOTES:

1. ALL NEW STORM DRAIN AND OTHER UTILITIES SHALL BE INSTALLED PER STANDARD TRENCH DETAIL



DIAL TOLL FREE
1-800-227-2600
AT LEAST TWO DAYS
BEFORE YOU DIG

UNDERGROUND SERVICE ALERT OF SOUTHERN CALIFORNIA



CALIFORNIA STATE FIRE MARSHAL APPROVED
Approval of this plan does not authorize or approve any variation of deviation from applicable regulations. Final approval is subject to field inspection. One set of approved plans shall be available on the project site at all times.

Reviewed by: _____ Date: _____
DPR ACCESS COMPLIANCE REVIEW
ACCESSIBILITY SECTION
CERTIFICATION # _____

Reviewed by: _____ Date: _____
ACCESSIBILITY COMPLIANCE AND STATE FIRE MARSHAL, SIGNED ORIGINAL LANE ON FILE AT THE DEPARTMENT OF PARKS AND RECREATION, NORTHERN SERVICE CENTER.

DESIGNED: MA
DRAWN: MA
CHECKED: BP
DATE: 11/06/2019

REVISIONS: _____ DATE: _____

REVISIONS: _____ DATE: _____

REVISIONS: _____ DATE: _____

REVISIONS: _____ DATE: _____

REVISIONS: _____ DATE: _____

REVISIONS: _____ DATE: _____

REVISIONS: _____ DATE: _____

REVISIONS: _____ DATE: _____

REVISIONS: _____ DATE: _____

REVISIONS: _____ DATE: _____

REVISIONS: _____ DATE: _____

REVISIONS: _____ DATE: _____

REVISIONS: _____ DATE: _____

REVISIONS: _____ DATE: _____

REVISIONS: _____ DATE: _____

REVISIONS: _____ DATE: _____

REVISIONS: _____ DATE: _____

TOPANGA STATE PARK
TRIPPET RANCH PARKING LOT
PARKING LOT - UTILITY PLAN

10929.014

SHEET NO.

C-2.6

014 OF 049