

CALIFORNIA COASTAL COMMISSION

South Coast Area Office
301 E. Ocean Blvd. Suite 300
Long Beach, CA 90802-4302
(562) 590-5071



W16a

5-19-1195 (MARINA PACIFICA BOAT SLIPS, LLC)

SEPTEMBER 8, 2021

EXHIBITS

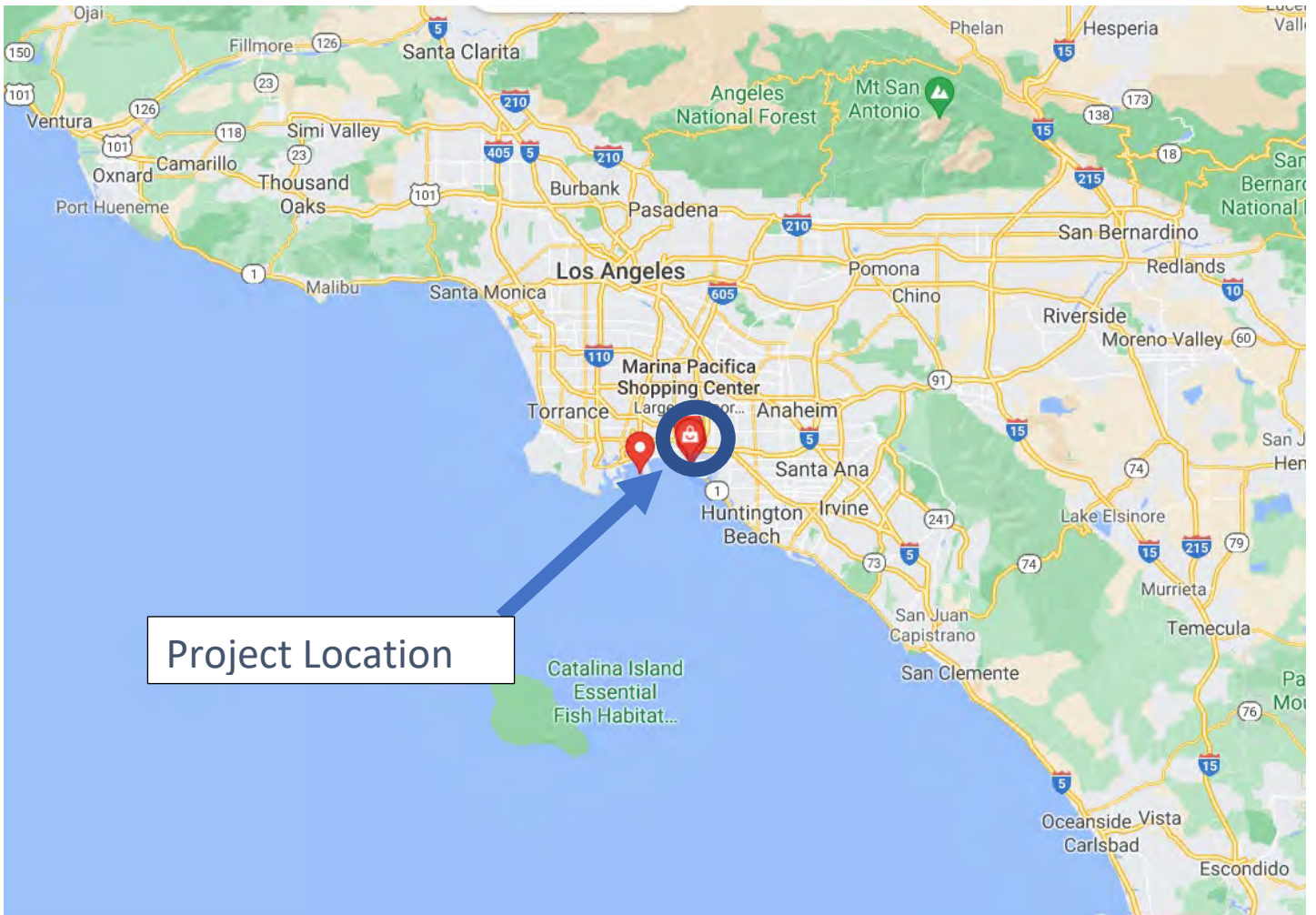
Exhibit 1 – Vicinity Map

Exhibit 2 – Site Plan

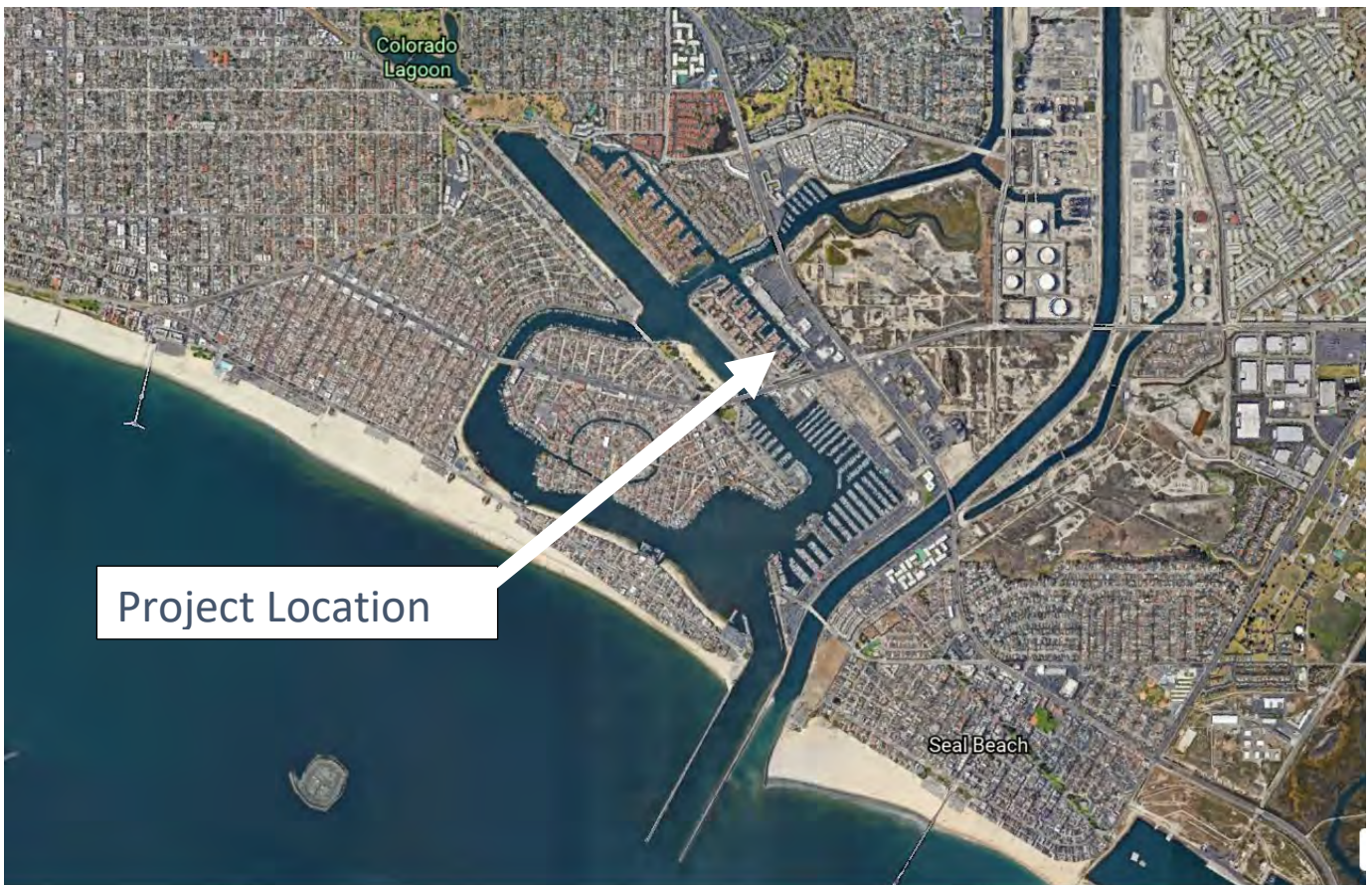
Exhibit 3 – Project Plans

Exhibit 4 – Pipe Pile Mooring Details

Exhibit 5 – Letter from the City of Long Beach regarding their Public Trust Easement

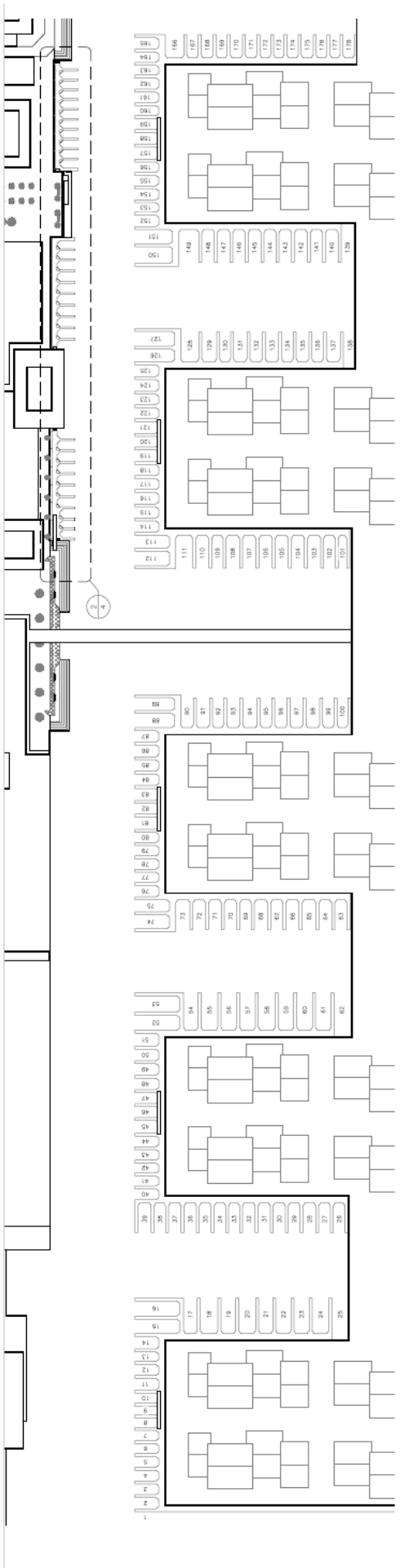


Project Location

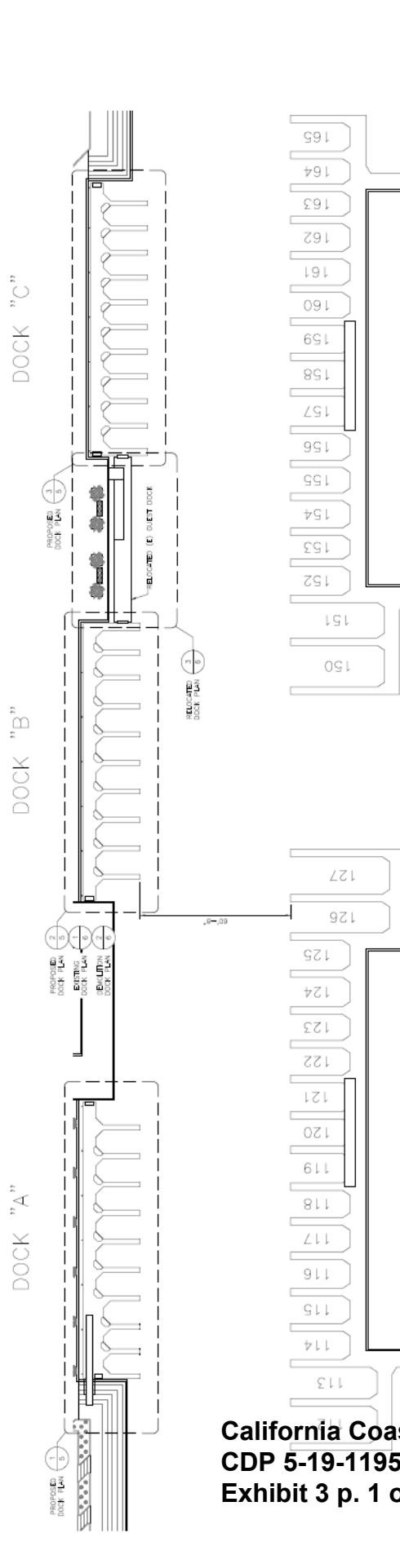


Project Location



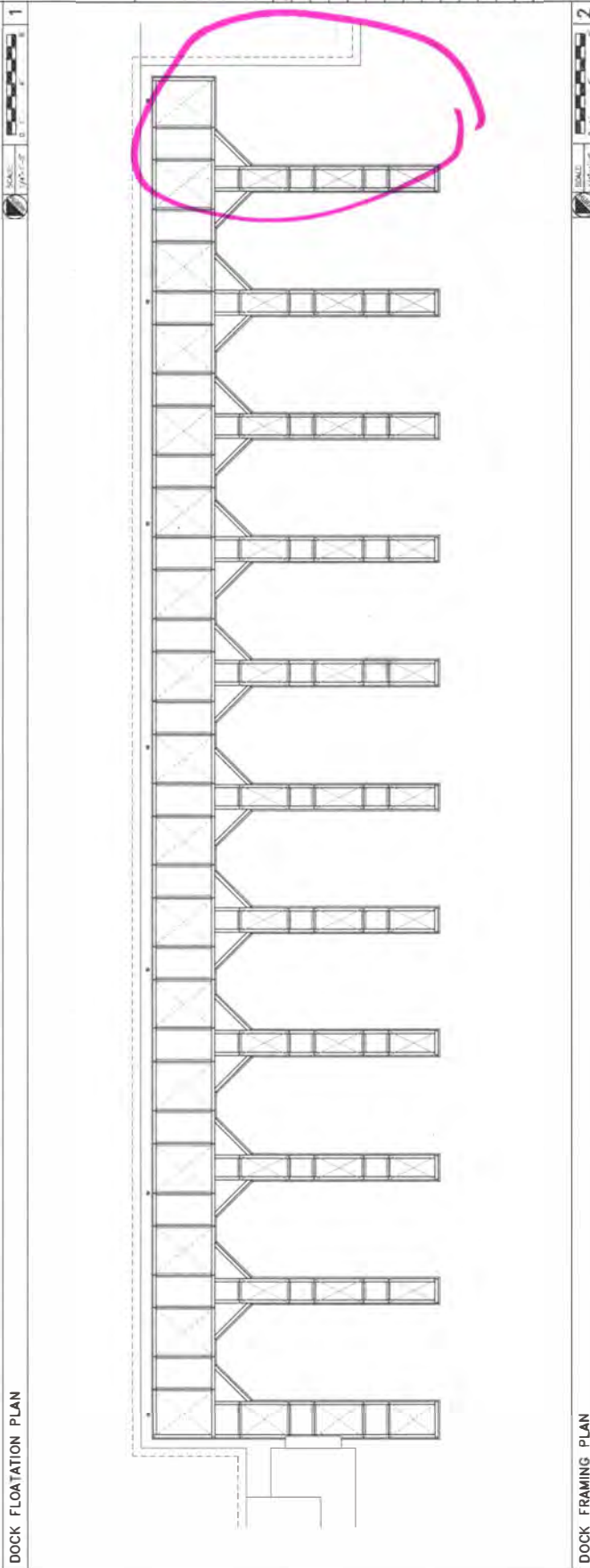
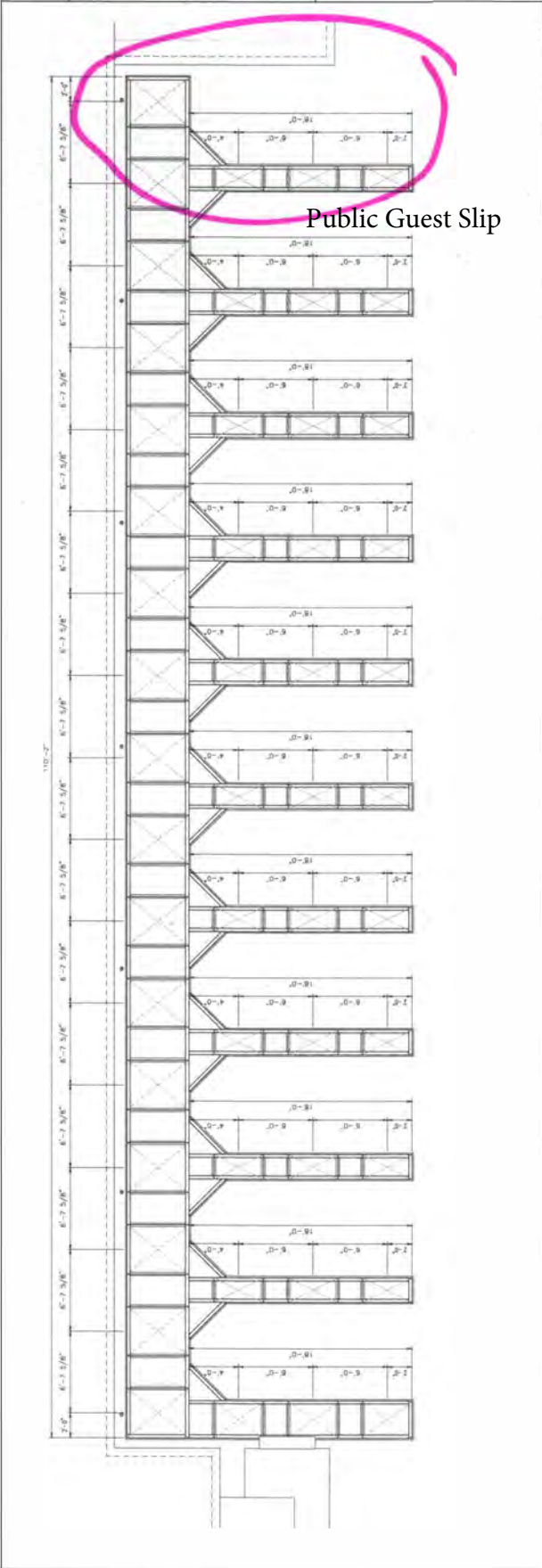


SITE PLAN





| | |
|---|----------|
| REVISED | DATE |
| 1 | 11/11/18 |
| DRAWN BY: ASJ CHECKED BY: ASJ DATE PLOTTED: 01-17-19 SHEET: S-03 | |



August 10, 2021

Mandy Revell
Coastal Analyst
California Coastal Commission
301 E. Ocean Blvd., Suite 300
Long Beach, CA 90802

Re: Coastal Commission Application No. 5-19-1195 (6326 E. Pacific Coast Hwy, City of Long Beach [APN: 7242-021-005])

Dear Ms. Revell:

There is a pending Coastal Development Permit (CDP) before the California Coastal Commission (CCC) for the relocation of an existing guest dock and gangway and installation of three new floating docks with 31 public boat slips (30 public for-rent slips, and one free public slip) with dock boxes and utilities and an additional gangway, in the waterway behind the Marina Pacifica Shopping Center. The City of Long Beach (City) is aware of this pending application and this letter is to provide clarification on the project's relation to the Public Trust Doctrine.

The City is the administrator of public trust lands granted by the State of California and is required to manage tidelands through statute and implementation of the Public Trust Doctrine (the common law principles that govern use of these lands). Public trust uses are generally limited to water dependent or related, and include commerce, fisheries, navigation, ecological preservation, and recreation.

This letter is to confirm that the City considers the proposed public floating docks and a free public boat slip with direct access to the water as a permitted water-dependent public trust use.

If there are any questions or concerns regarding this correspondence, please do not hesitate to contact the project planner, Maryanne Cronin, at (562) 570-5683 or maryanne.cronin@longbeach.gov.



City of Long Beach

August 9, 2021

Page 2 of 2

Respectfully Submitted,

A handwritten signature in blue ink that reads "Christopher Koontz". The signature is written in a cursive, flowing style.

Christopher Koontz
Deputy Director of Development Services

CK:mc