

## **CALIFORNIA COASTAL COMMISSION**

South Coast District Office  
301 E Ocean Blvd., Suite 300  
Long Beach, CA 90802-4302  
(562) 590-5071



# **W16c**

**5-20-0522 (Street Retail West II, LP)**

**SEPTEMBER 8, 2021**

### **EXHIBITS**

#### **Table of Contents:**

Exhibit 1 – Vicinity Map and Project Site

Exhibit 2 – Project Plans

Exhibit 3 – Project Site's Walk Score



**Project Location**







**Project Site**

**Wilshire Blvd**

**3rd Street Promenade**

1202 3rd Street Promenade

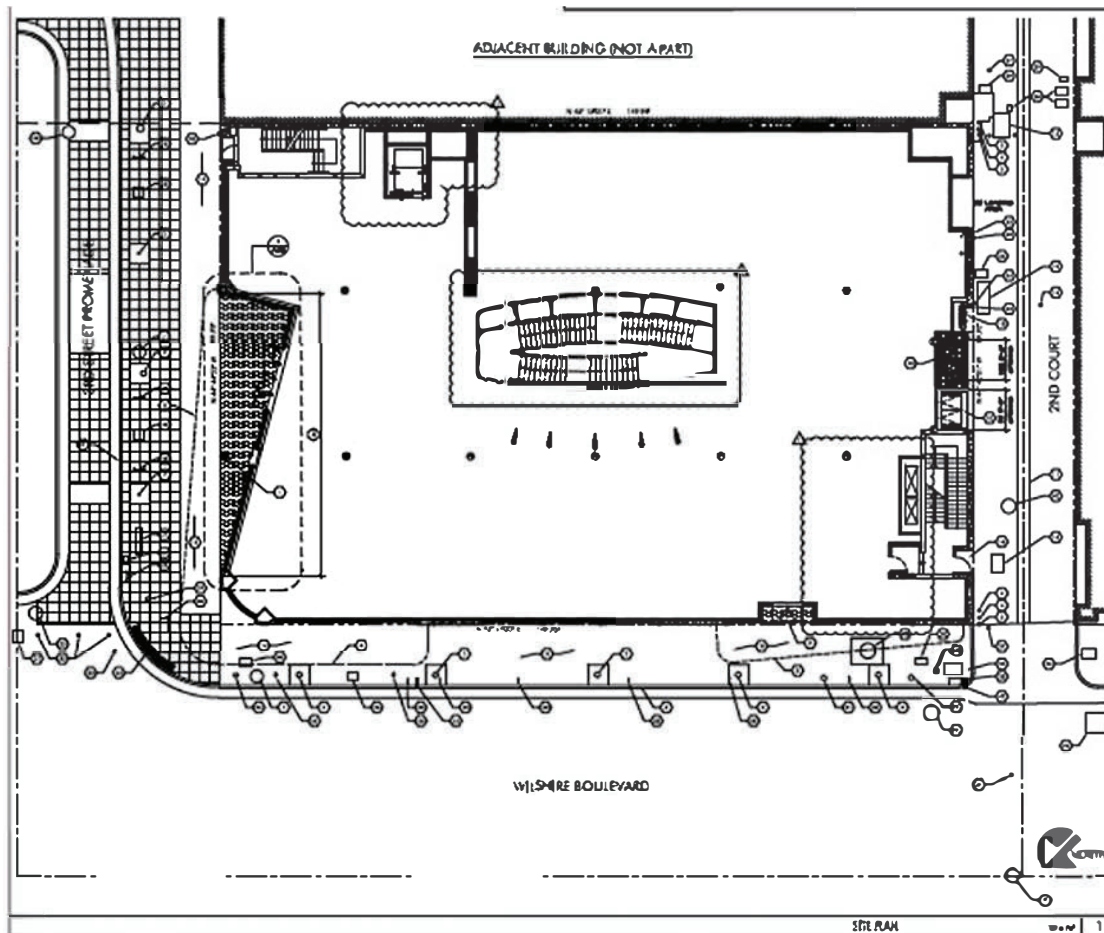
## Exhibit 1

Page 2 of 2



California Coastal  
Commission





Coastal Approval in  
Concept  
21ENT-0098  
4/21/2021



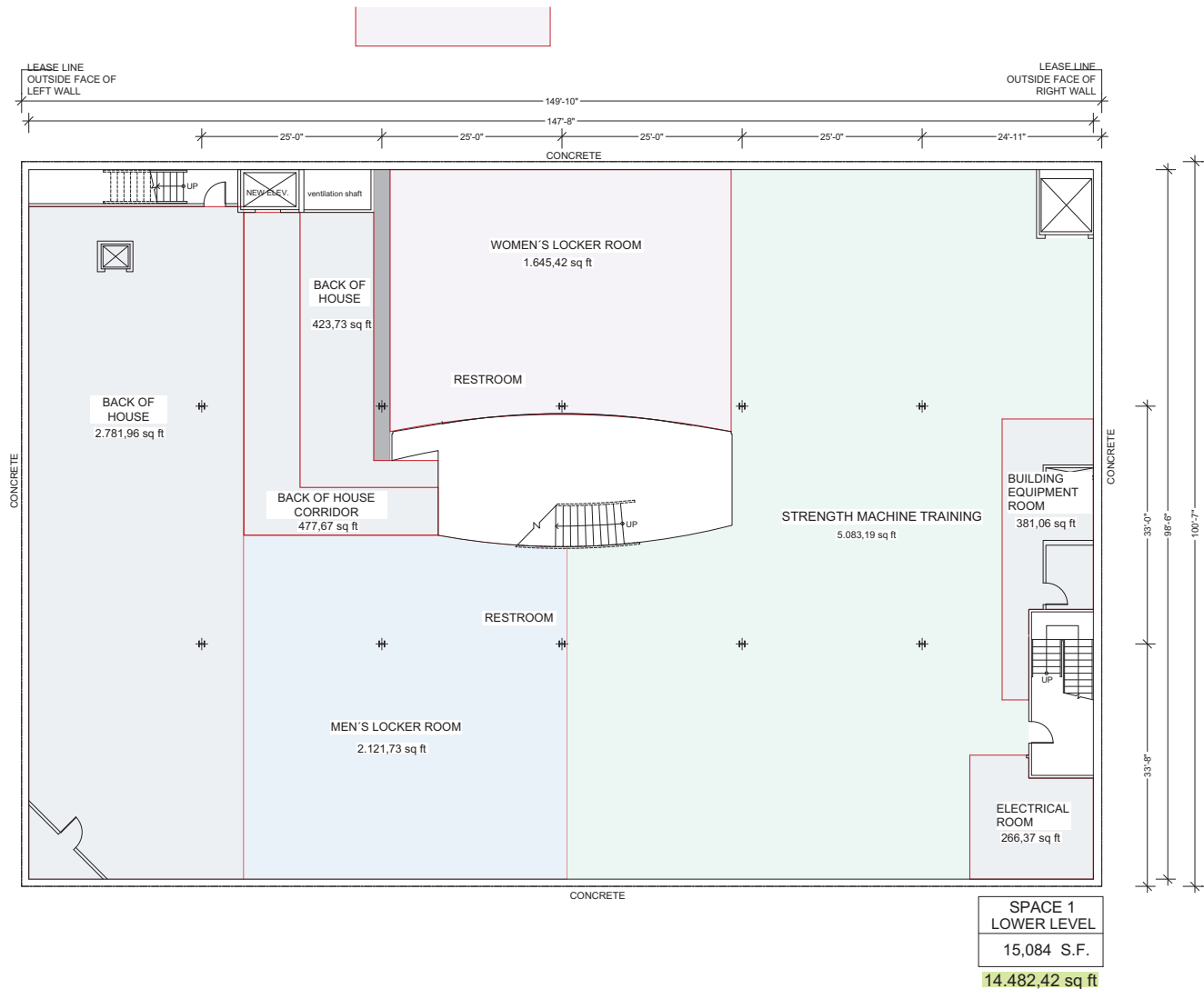
*[Handwritten signature]*

## Exhibit 2

Page 1 of 4



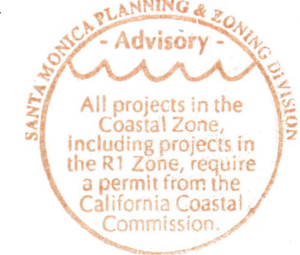
California Coastal  
Commission



Coastal Approval in Concept

21ENT-0098

4/21/2021



*[Handwritten signature]*

Tenant

Back of House

3,205.69

Back of House

Corridor

Project Name

Santa Monica 3Rd St.

RSG Group  
North America LP

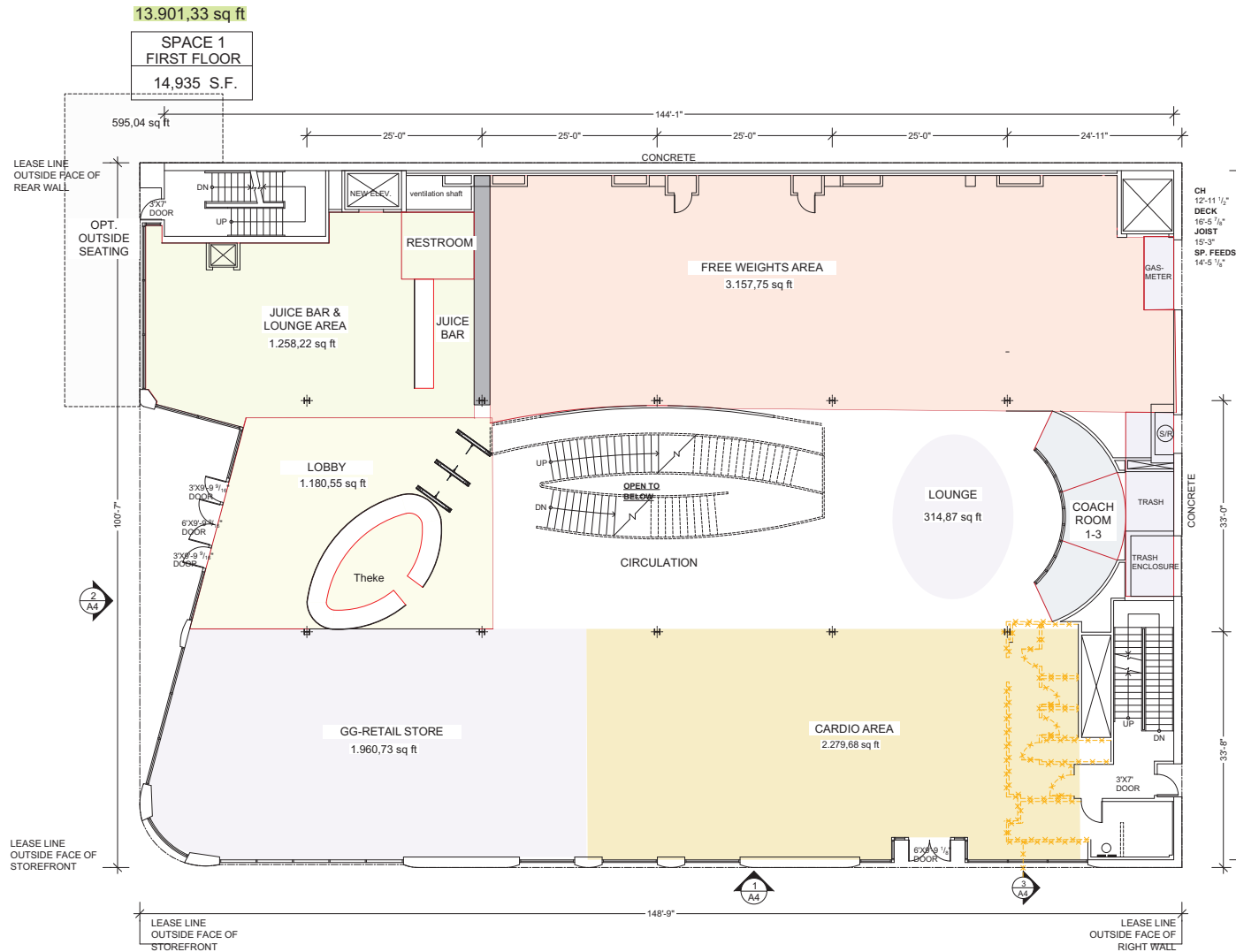
**Exhibit 2**

Page 2 of 4



California Coastal  
Commission

Tenant  
Juice Bar  
and Lounge  
  
1,258.22  
Lobby



BIKE PARKING NOTE:  
LONG-TERM AND SHORT-TERM BIKE PARKING  
REQUIREMENTS WILL BE SATISFIED BY PAYING A FEE  
PER SPACE PURSUANT TO SMMC 9.28.140.E AND F.

NOTE:  
A SIGN WILL BE POSTED WITH CONTACT  
INFORMATION FOR ON-SITE STORE MANAGEMENT

Coastal Approval in Concept  
21ENT-0098  
4/21/2021



*[Signature]*

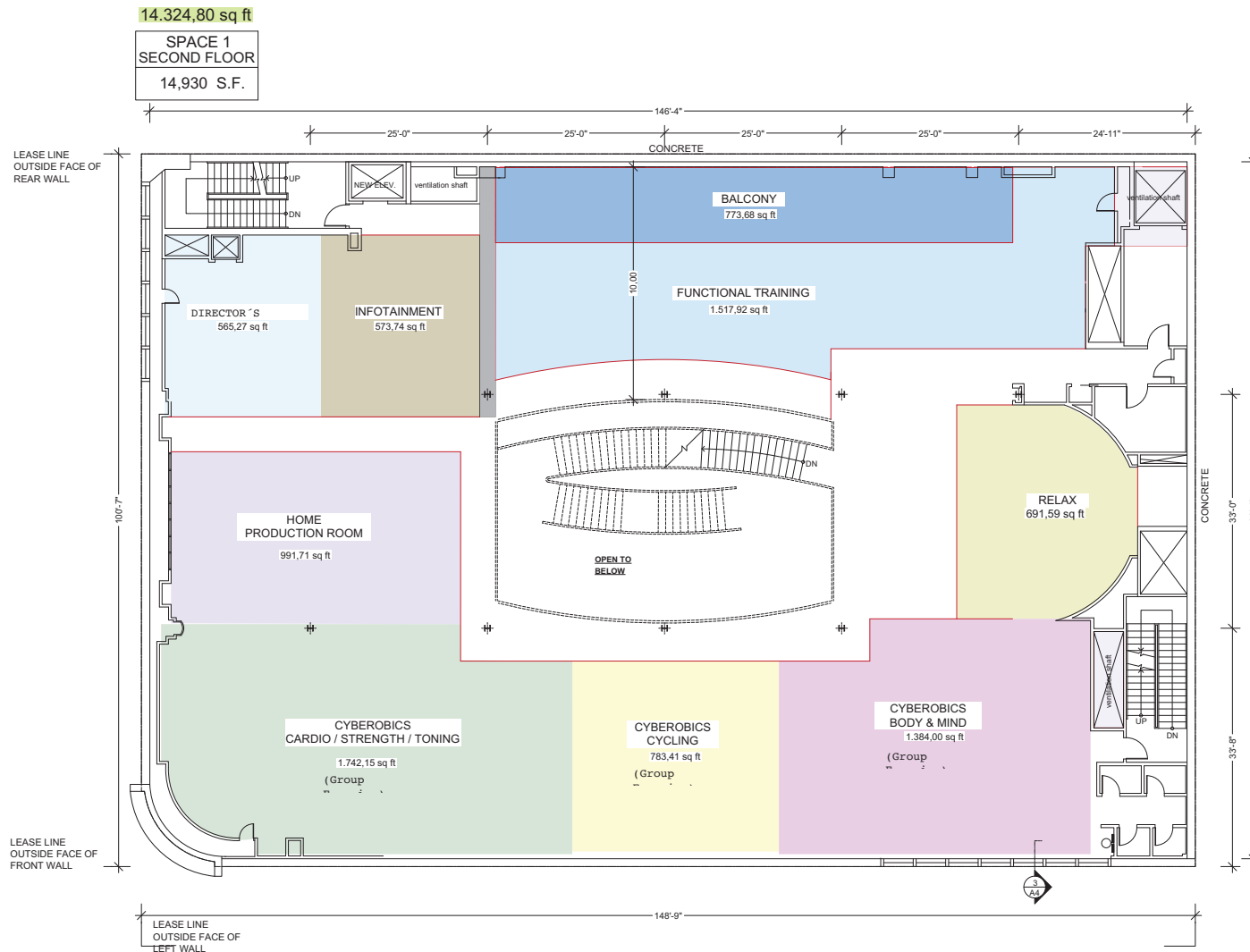
Project Name  
Santa Monica 3Rd St.  
  
RSG Group  
North America LP

## Exhibit 2

Page 3 of 4



California Coastal  
Commission



Tenant 2nd Floor  
 Director's Office  
 565.27  
 Infotainment  
 573.74  
 Home Production Room  
 991.71  
 Cyberobic Training Cardio/  
 Strength/Toning  
 1,742.15

Coastal Approval in Concept  
 21ENT-0098  
 4/21/2021



*[Handwritten signature]*

Project Name

Santa Monica 3Rd St.

RSG Group  
 North America LP

**Exhibit 2**

Page 4 of 4



California Coastal  
 Commission

 Type an address, neighborhood or city

Go

# 1202 3rd Street Promenade

Wilshire-Montana, Santa Monica, 90401

Commute to **Downtown Santa Monica**

 2 min  11 min  3 min  14 min [View Routes](#)

 **Favorite**

 **Map**

 **Nearby Apartments**

[Looking for a home for sale in Santa Monica?](#)

Walk Score

89

**Very Walkable**  
Most errands can be accomplished on foot.

Transit Score

75

**Excellent Transit**  
Transit is convenient for most trips.

Bike Score

84

**Very Bikeable**  
Biking is convenient for most trips.

[About your score](#)  
[Add scores to your site](#)

