

CALIFORNIA COASTAL COMMISSION

South Coast District Office
301 E Ocean Blvd., Suite 300
Long Beach, CA 90802-4302
(562) 590-5071



W8a

5-22-0269 (St. Luke Asset Management, LLC)

NOVEMBER 16, 2022

EXHIBITS

Table of Contents

EXHIBIT NO. 1 – LOCATION MAP	2
EXHIBIT NO. 2 – PROJECT PLAN.....	3

Exhibit No. 1 – Location Map

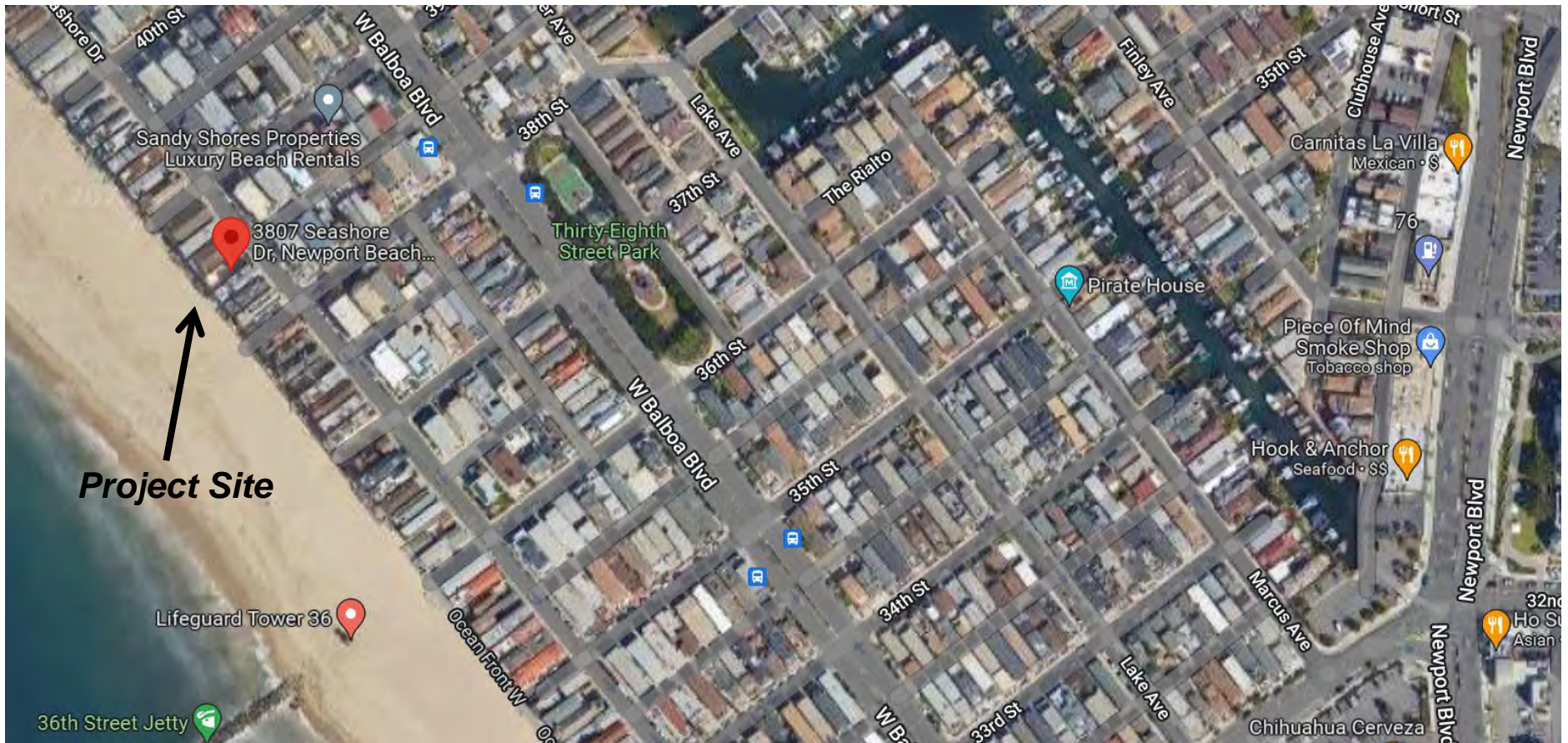
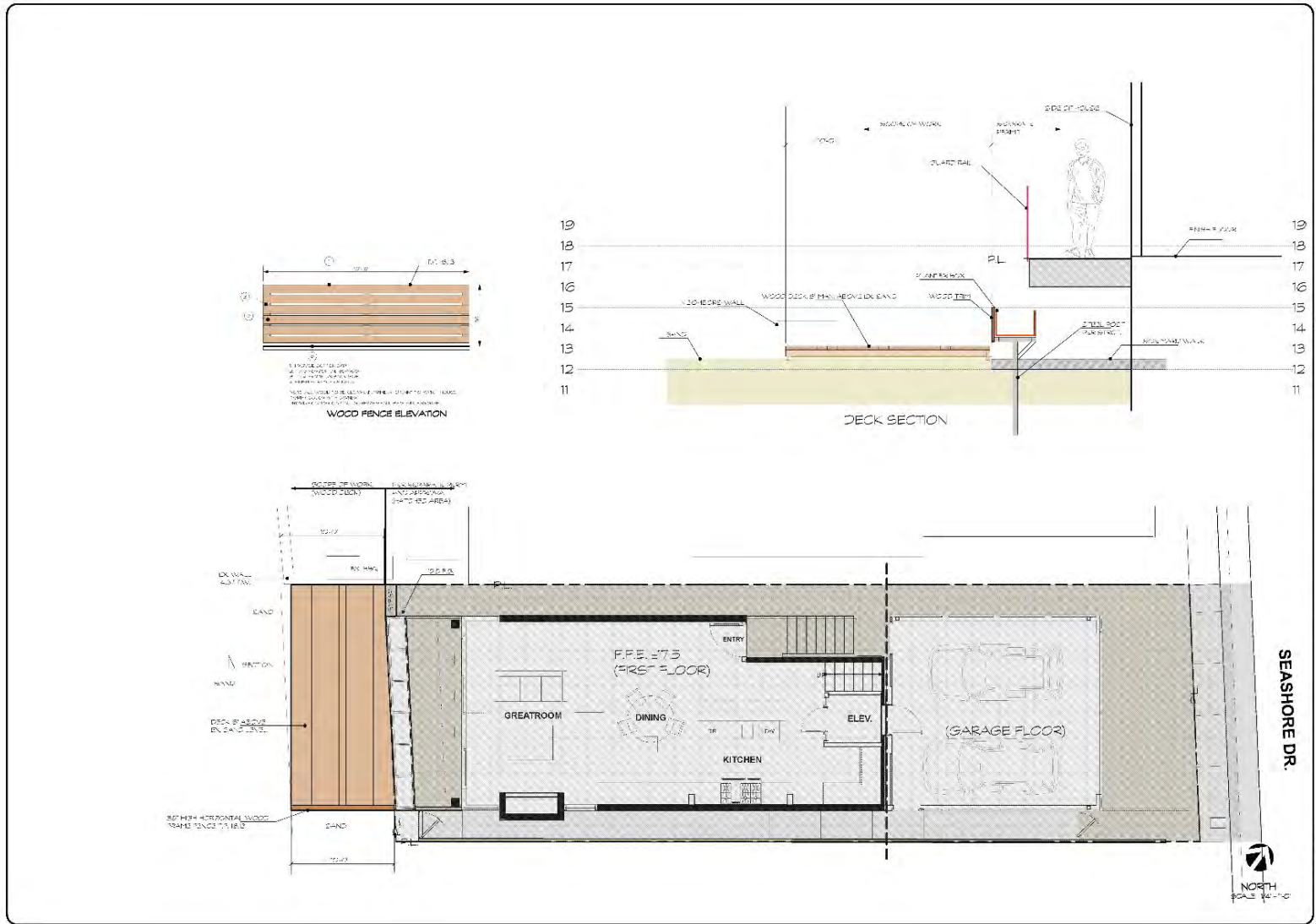


Exhibit No. 2 – Project Plan



DAVID A. PEDERSEN • INC.
 LANDSCAPE ARCHITECTURE
 3807 SEASHORE DR. SUITE 200
 NEWPORT BEACH, CA 92660
 TEL: 949.261.8888
 FAX: 949.261.8889
 WWW.DAPEDERSEN.COM

LANDSCAPE ARCHITECTURAL PLANS FOR
 SAM SOLIMAN
 3807 SEASHORE • NEWPORT BEACH, CA 92660
 PH: (949) 777-2301
 sam@spava-architectural.com

DATE: 10-8-20
 DRAWN BY: D.S.
 SHEET NO.
 OF - 8