

CALIFORNIA COASTAL COMMISSION

SAN DIEGO DISTRICT OFFICE
7575 METROPOLITAN DRIVE, SUITE 103
SAN DIEGO, CA 92108-4402
VOICE (619) 767-2370
FAX (619) 767-2384



W8a

6-22-0490 (Del Mar Riverpath Trail Phase III Extension)

December 14 – 16, 2022

EXHIBITS

Table of Contents

EXHIBIT 1: Vicinity Map

EXHIBIT 2: Location Maps

EXHIBIT 3: Trail Sections

EXHIBIT 4: Project Plans

EXHIBIT 5: Proposed Mitigation Site



EXHIBIT NO. 1
APPLICATION NO. 6-22-0490
Vicinity Map
 California Coastal Commission

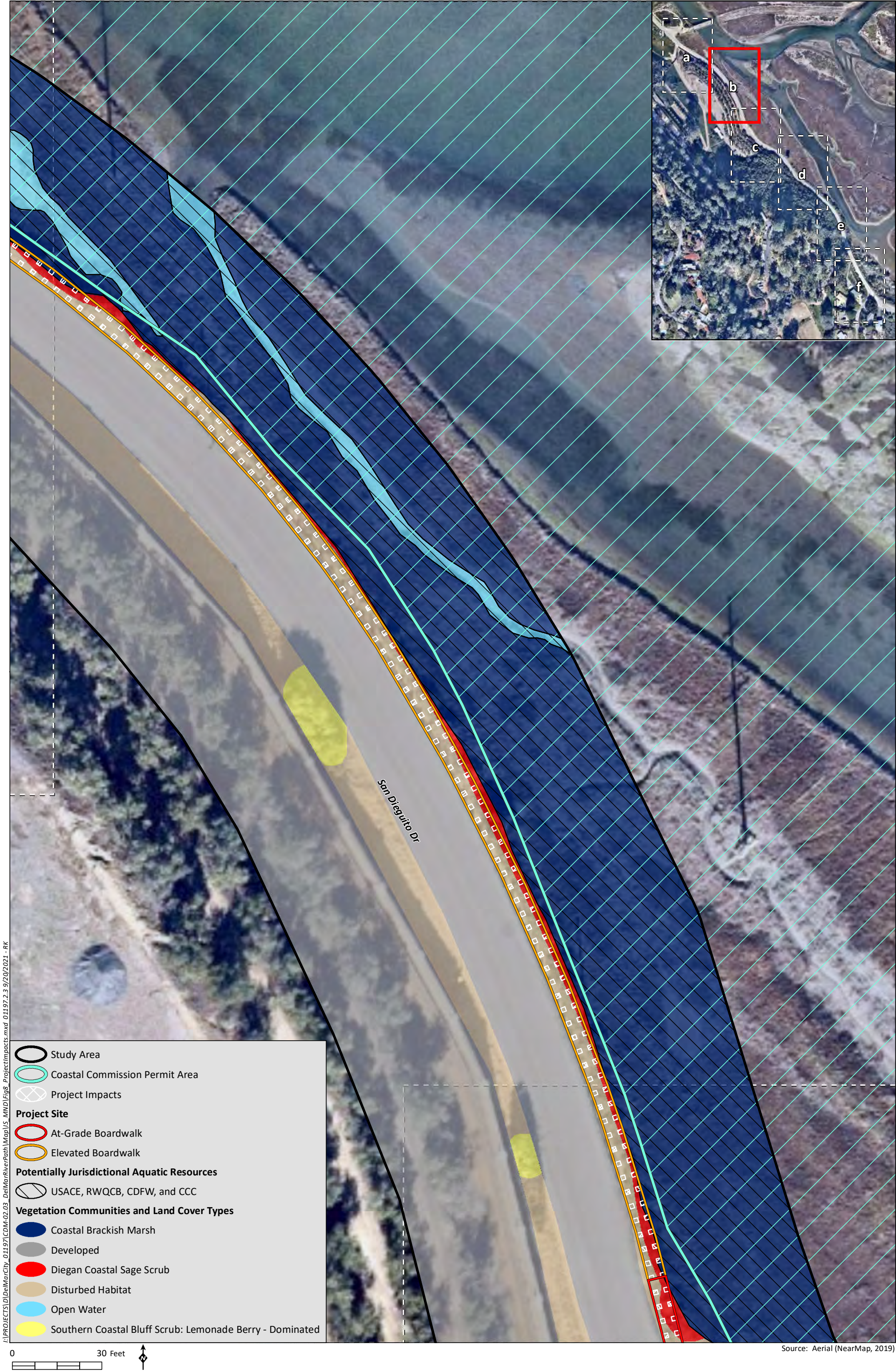


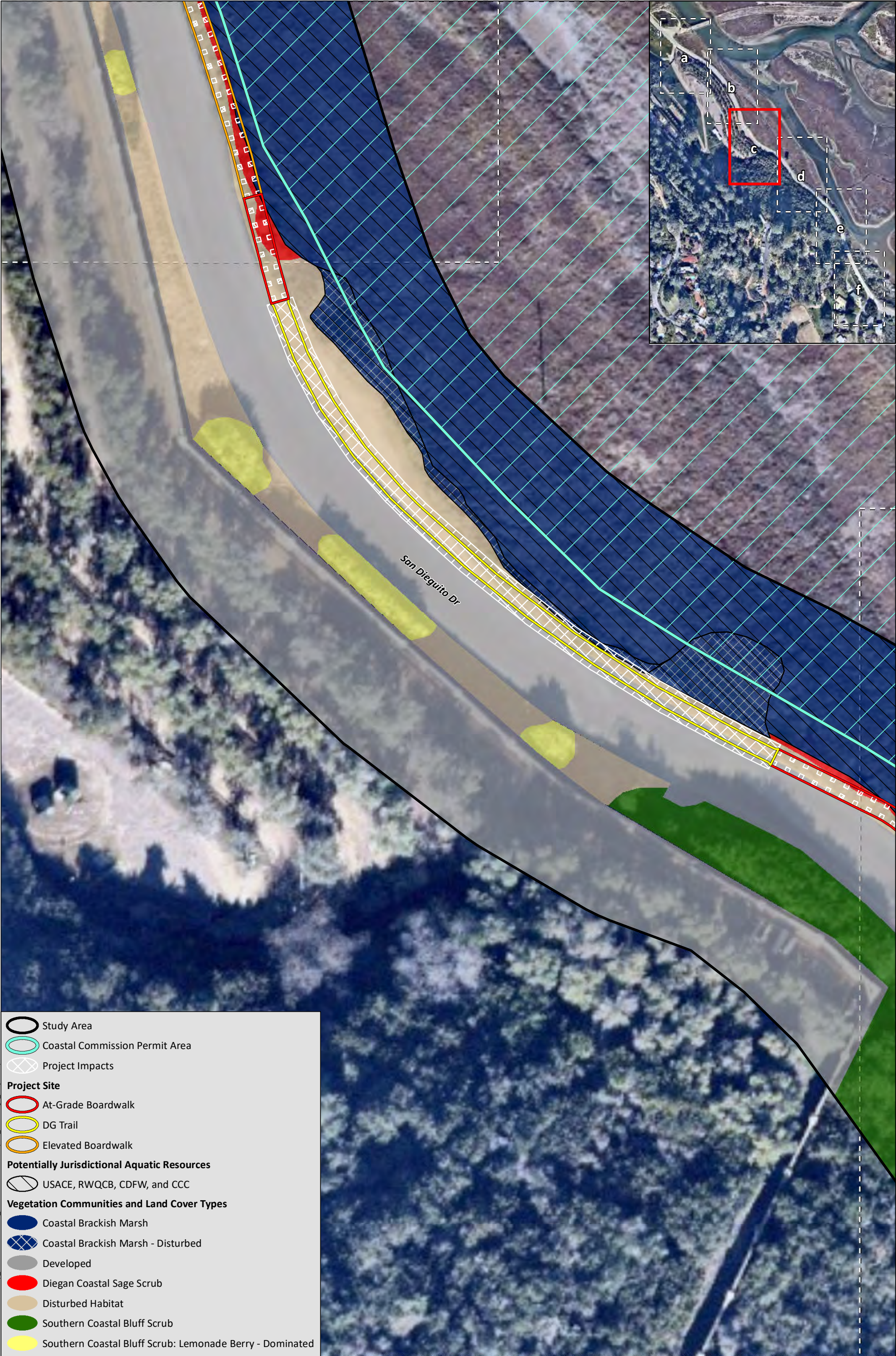
EXHIBIT NO. 2
APPLICATION NO. 6-22-0490
Location Map
California Coastal Commission

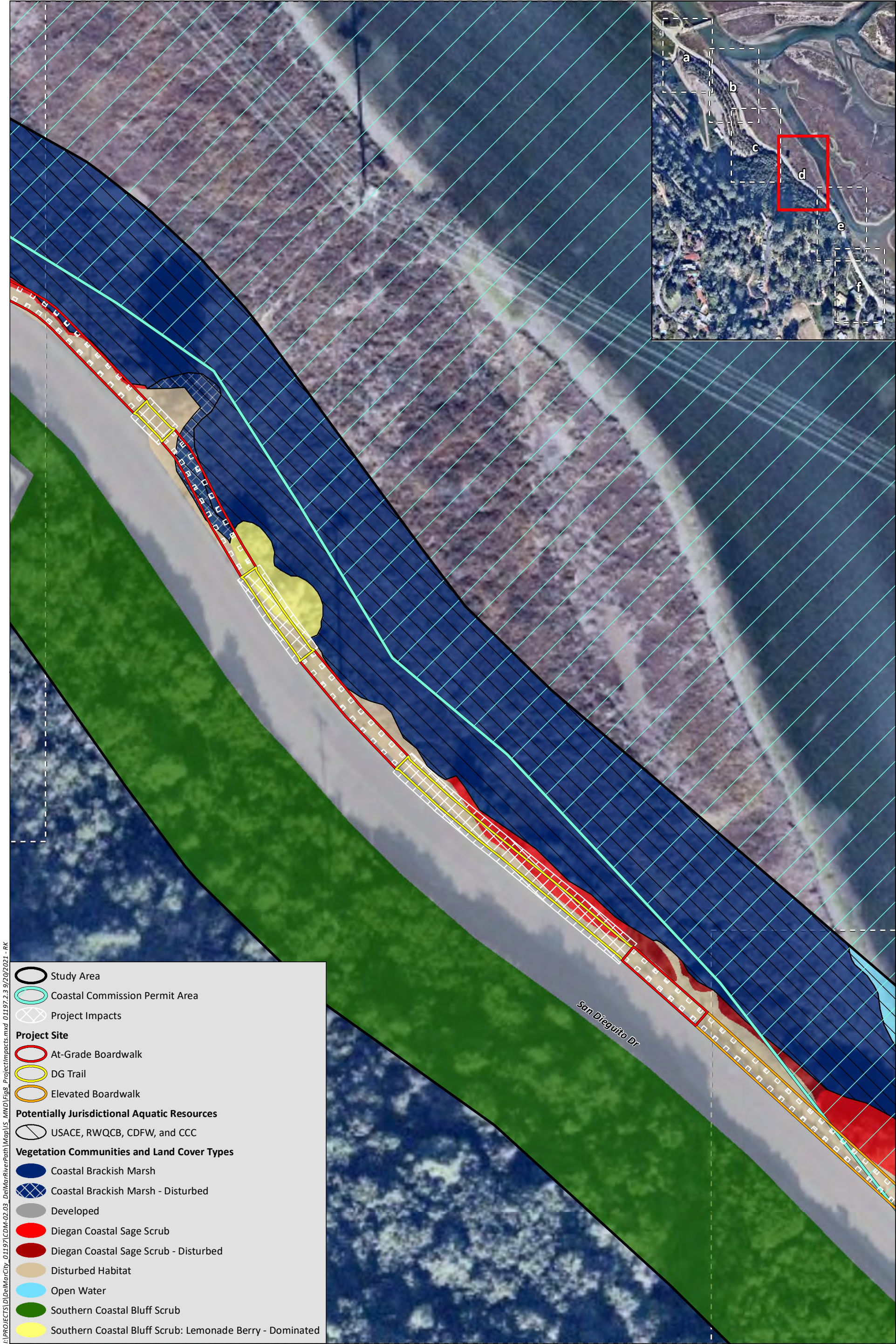


EXHIBIT NO. 3
APPLICATION NO. 6-22-0490
Trail Sections
 California Coastal Commission

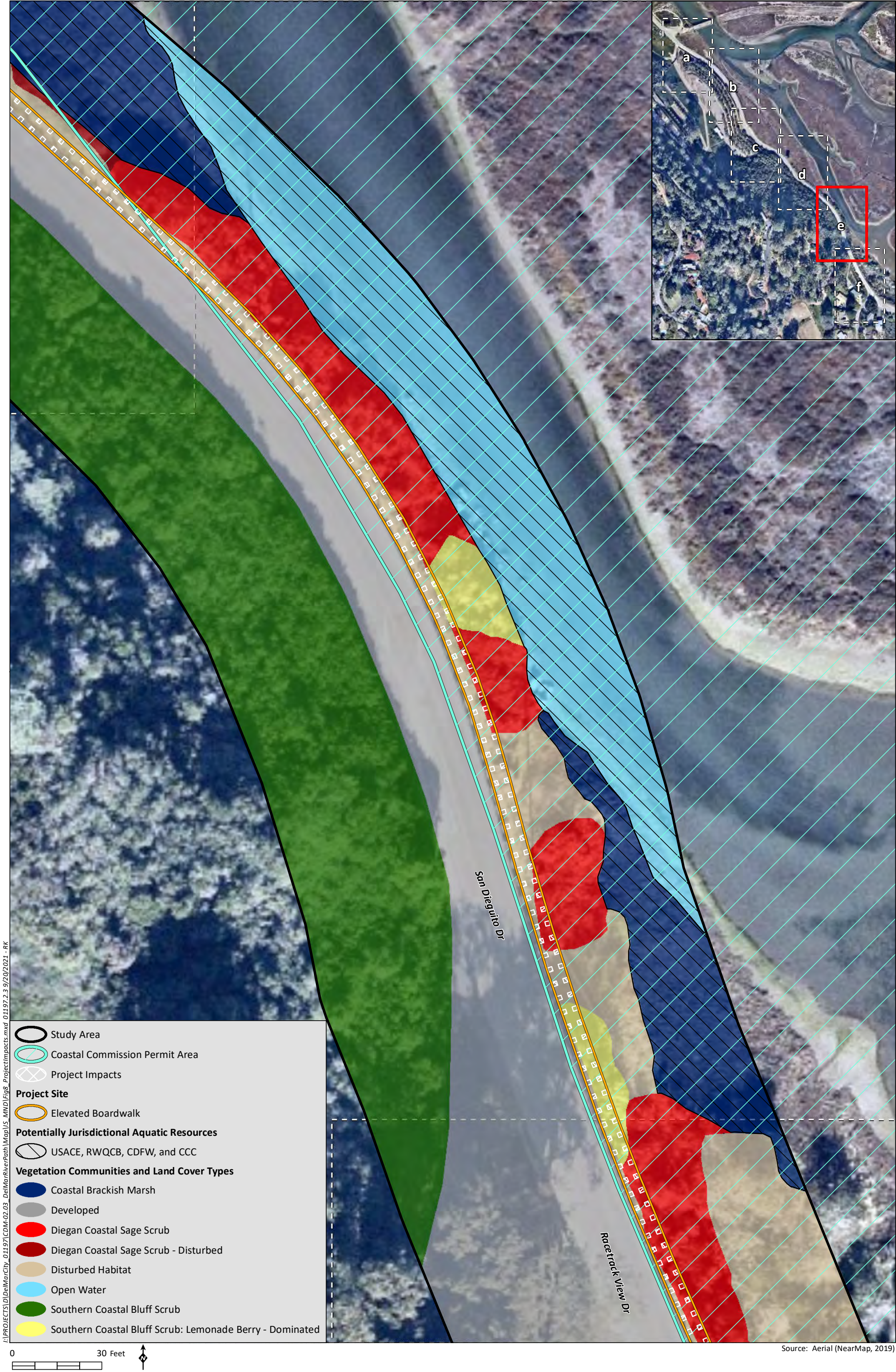




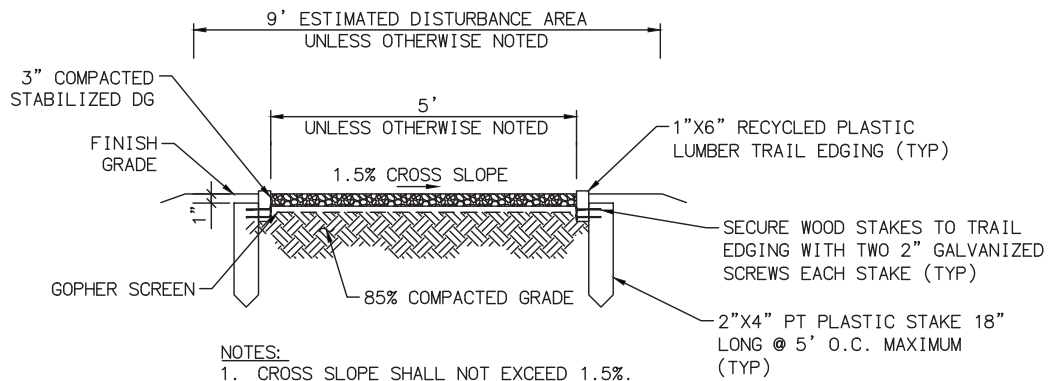




Source: Aerial (NearMap, 2019)







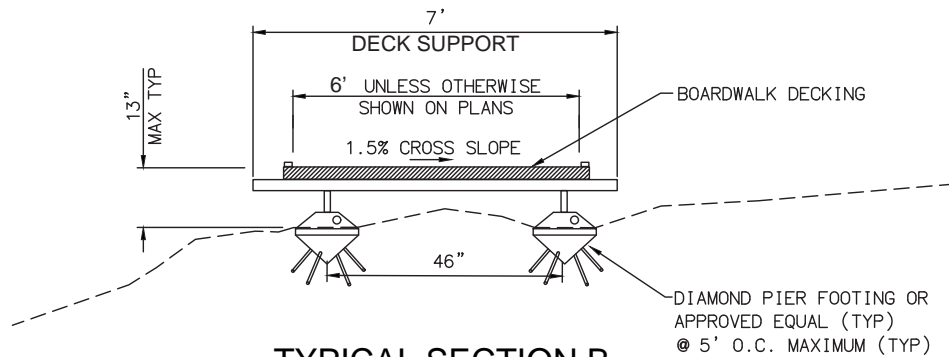
TYPICAL SECTION A

(DG TRAIL)

STA 0+16 TO STA 2+28 AND STA 7+25 TO STA 13+00

787 LF

NOT TO SCALE



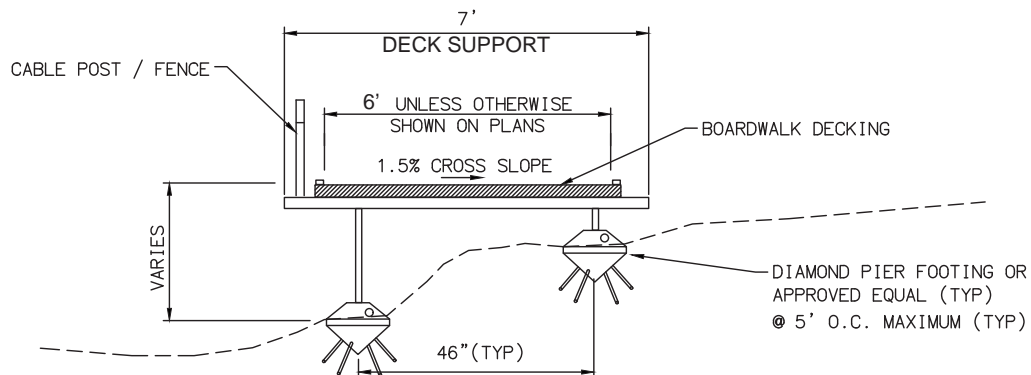
TYPICAL SECTION B

(AT-GRADE BOARDWALK)

STA 2+28 TO 2+53 & STA 6+89 TO STA 7+25 & STA 13+00 TO 13+33

94 LF

NOT TO SCALE



TYPICAL SECTION C

(ELEVATED BOARDWALK)

STA 2+53 TO STA 6+89 & STA 13+33 TO STA 21+80

1283 LF

NOT TO SCALE

Source: Michael Baker International 2020

