

CALIFORNIA COASTAL COMMISSION

455 MARKET STREET, SUITE 300
SAN FRANCISCO, CA 94105-2219
VOICE (415) 904- 5200
FAX (415) 904-5400
WWW.COASTAL.CA.GOV



F12a

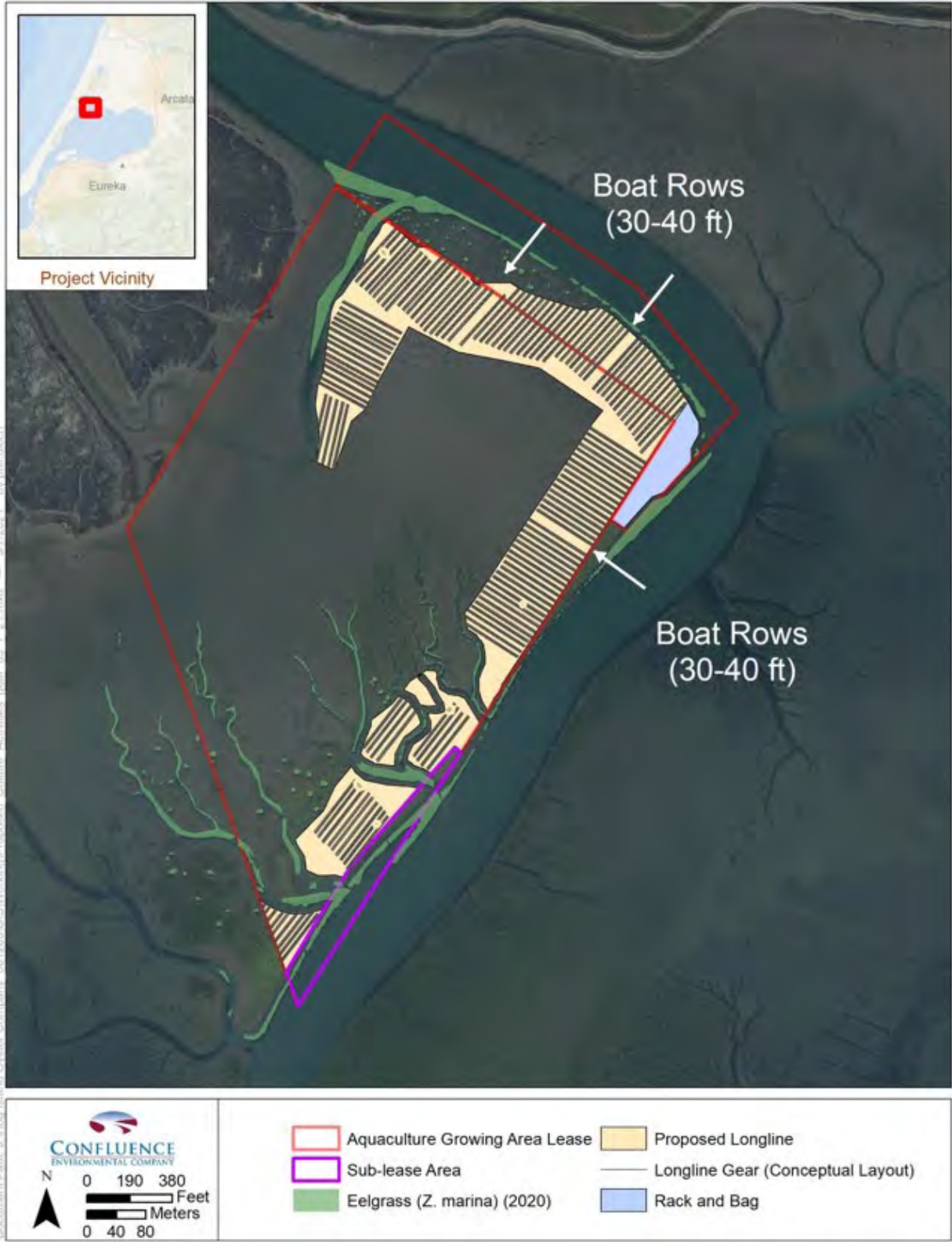
CDP No.: 9-21-0561 (HIOC)

February 11, 2022

EXHIBITS

- Exhibit 1 – Proposed project area (design with boat lanes)
- Exhibit 2 – HIOC proposed mitigation measures and BMPs
- Exhibit 3 – Transit route and black brant grit sites
- Exhibit 4 – Draft spill prevention and response plan
- Exhibit 5 – Green sturgeon occurrences
- Exhibit 6 – Seasonal brant closure area

Exhibit 1



Document Path: J:\Hoop Island\Oyster Company_001286\GIS\Workshop\Proposed Culture Activities.parc 05_7_21.mxd -- 5/7/2021 by nabil bloch

Exhibit 2

#	Topic	Mitigation Measure or BMP
Mitigation Measures		
Mit-1	Marine Debris	HIOC will implement a marine debris management plan (Appendix A). At the time of harvest of each cultivation area, HIOC will carry out a thorough inspection to locate and remove any loose, abandoned or out of use equipment and tools. All floating bags and baskets will be marked or branded with the HIOC's name and phone number.
Mit-2	Eelgrass (<i>Zostera marina</i>) Protection	HIOC will install racks, intertidal longline systems, and other aquaculture gear at least 5 horizontal meters (or 16 feet) from native eelgrass (<i>Zostera marina</i>) <u>bedscover</u> . This will not prevent continued cultivation in areas where eelgrass moves into the project site. HIOC is expected to install gear incrementally. Before gear is installed in new areas, eelgrass will be mapped in culture areas using unmanned aerial vehicles (UAV) and/or verified using ground surveys to identify eelgrass <u>bedscover</u> and establish 5 meter horizontal buffers. Eelgrass surveys will be <u>considered valid pre installation surveys if performed less than 2 years conducted annually during the eelgrass growing season (May to September) prior to gear installation until gear is fully installed at the site.</u>
Mit-3	Vessel Anchors	HIOC will anchor vessels outside of areas containing eelgrass.
Mit-4	Vessel Routes	HIOC will establish a vessel route to access its leases that avoids known native eelgrass (<i>Z. marina</i>) <u>bedscover</u> , and maintain a no wake zone within a 1,000-foot buffer north of Tuluwat Island to avoid black brant (<i>Branta bernicla</i>) <u>gritting sites in the winter (December 15-April 30).</u>
Mit-5	<u>Channel Buffers</u>	HIOC will establish a 10-foot buffer from the top of bank of channels. Culture equipment will not be installed in the buffer areas.
Mit-65	Pacific Herring (<i>Clupea pallasii</i>) Avoidance	In any cultivation beds within or adjacent to eelgrass <u>bedscover</u> (in the event that eelgrass moves into the project site), HIOC will conduct visual surveys for Pacific herring spawn prior to conducting activities during the herring spawning season (October to April). If herring spawn is present, HIOC will suspend activities in the areas where spawning has occurred until the eggs have hatched and spawn is no longer present (typically 2 weeks).
Mit-76	Cultural Resources	HIOC will comply with the Harbor District Protocol agreed upon between the Harbor District and the Blue Lake Rancheria, Bear River Band of Rohnerville Rancheria, and Wiyot Tribes regarding the inadvertent discovery of archaeological resources, cultural resources, or human remains or grave goods (Appendix B).
BMPs		
BMP-1	Vessel Maintenance and Fueling	HIOC will maintain all vessels used in culture activities to limit the likelihood of release of fuels, lubricants, or other potentially toxic materials associated with vessels due to accident, upset, or other unplanned events. HIOC will use marine grade fuel cans that are refilled on land, and HIOC carries oil spill absorption pads and seals wash decks or isolates fuel areas prior to fueling to prevent contaminants from entering the water.
BMP-2	Vessel Motors	HIOC will use highly efficient 4-stroke outboard motors. All motors will be muffled to reduce noise.
BMP-3	Fish and Wildlife	During vessel transit, harvest, maintenance, inspection, and planting operations, HIOC will avoid approaching, chasing, flushing, or directly disturbing shorebirds, waterfowl, seabirds, or marine mammals.
BMP-4	Bed Marking	HIOC culture beds will be marked with a long PVC pole to provide information to boaters of the location of shellfish aquaculture gear. HIOC will provide a map of the culture bed locations and post the maps at the closest boat launch and adjacent wildlife area and on the District's website.
BMP-5	<u>Bed Mapping</u>	<u>HIOC will provide a map of the culture bed locations and post the maps at the closest boat launch and adjacent wildlife area and on the District's website.</u>
#	Topic	Mitigation Measure or BMP
BMP-6	<u>Wetland Buffer</u>	HIOC has adopted a minimum of a 200-foot buffer between the wetlands associated with the Mad River Slough Wildlife Area and the proposed culture area. Culture equipment will not be installed in <u>the buffer areas.</u>
BMP-7	<u>Bed Access</u>	<u>Vessels may cross areas with eelgrass when the predicted tidal height is +4 feet MLLW or greater by putting the engine in neutral and drifting across areas where eelgrass is present. This type of approach will be used when weather and tidal elevations permit.</u>

Exhibit 3



Hog Island Oyster Co. Spill Prevention and Response Plan

All employees must be trained to carry out the spill prevention and response actions set forth below, and each employee must be familiar with the types of hazardous materials stored on vessels as well as the location and use of available spill response equipment. Trainings will be held annually for all employees required to work on vessels.

Spill Prevention Guidelines:

- 1) Vessel fueling/refueling outside of designated fueling stations is prohibited.
- 2) Transfer of fuel tanks from land to vessel shall be performed at the Hog Island Facility, Marina facilities or the Mad River boat launch areas only.
- 3) Regular inspection and maintenance on land of equipment that uses and/or stores hazardous materials shall occur to prevent potential spills.
- 4) Spill prevention and response equipment shall be kept onboard project vessels and barges at all times to protect marine and shoreline resources in the event of a spill.
- 5) Refueling will largely take place on land, with the exception of the blow off pump and crane. If refueling of the blow off pump and/or crane is to take place over the water, drip pans, absorbent materials, or other devices to capture and contain spills shall be in place.

Response Actions in Case of a Spill:

All spills must be reported to the CA State Warning Center 1-800-852-7550

- 1) If possible, shut off the source of the spill immediately.
- 2) Use absorbent materials (absorbent pads and socks) to contain spills where the spilled chemical and its hazardous properties have been properly identified and assessed.
- 3) Cover/block any drains and contain spill to vessel so that hazardous material does not contaminate surrounding areas.
- 4) The health and safety of personnel is paramount. Use appropriate personal protective equipment depending on the spill material (gloves and goggles, etc) when responding to a spill.
- 5) Notify spill contact person & other emergency contact(s): manager or supervisor. #'s listed below.
- 6) Collect absorbent materials and treat as hazardous waste by disposing into plastic waste bags provided in the spill kit.
- 7) If the spill is large or otherwise uncontrollable, or poses a potential immediate hazard to human health and safety, or the environment call Emergency Response Agencies listed below:

List of Personal Protection Equipment (“PPE”) for Handling Spill: pair nitrile gloves and goggles per spill kit.

List of Hazardous Liquids that May Spill: Gasoline, Food Grade Hydraulic Fluid. Fuel tanks for boats (5 to 10 gallons), fuel tank for crane motor (5 gallons), fuel tank for mobile water pump “blow off pump” (5 gallons), and food grade hydraulic oil for crane (3 gallons).



*** Spill kits shall be located onboard project vessels and barges at all times*Emergency Contacts:**

All spills must be reported to the CA State Warning Center 1-800-852-7550

Managers:

Brad Fletcher, HIOC Director of Farm Operations

Phone #'s: (707) 567-5978 email: brad@hogislandoysters.com

Warren Moak, Farm Manager

Phone #'s: (707) 502-8706 email: warren@hogislandoysters.com

CDPH-EMB: Vanessa Zubkousky-White, Senior Environmental Scientist

Phone #'s: (510) 412-4635 email: vanessa.zubkousky@cdph.ca.gov

Exhibit 5

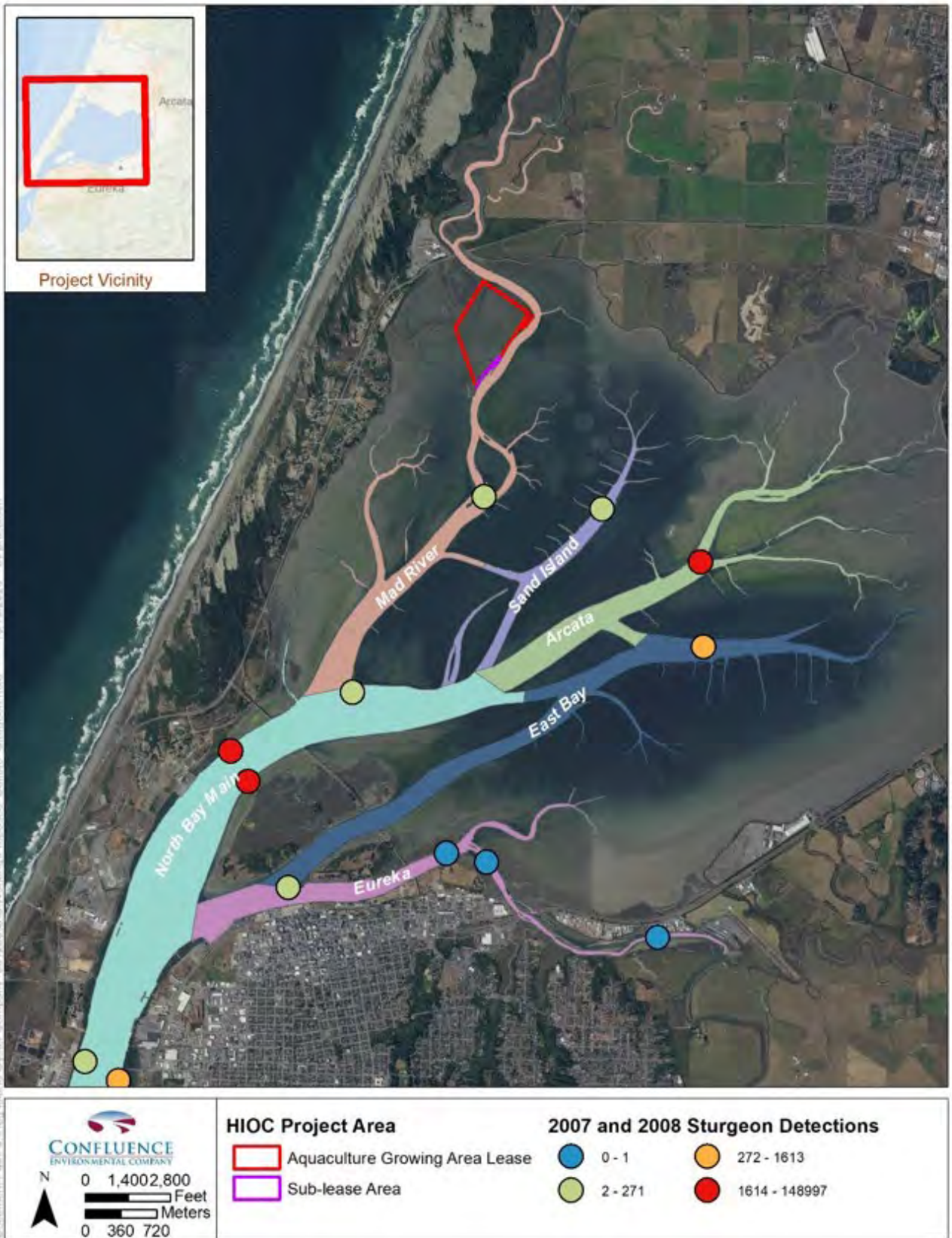
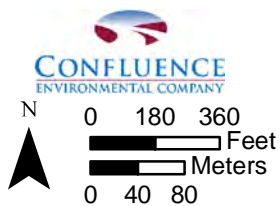
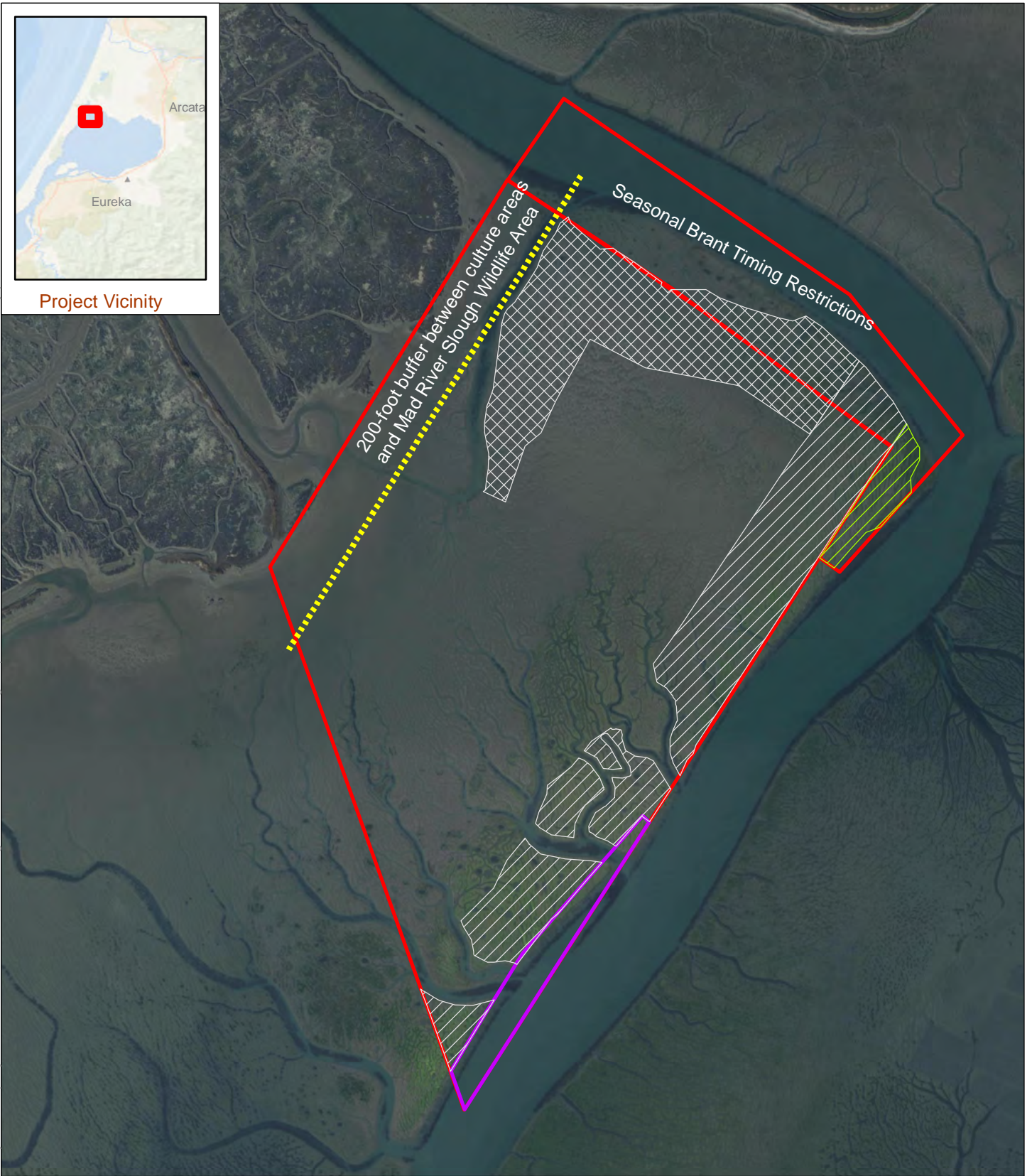







Exhibit 6



Project Vicinity

Document Path: J:\Hog Island Oyster Company_001286\Humboldt CEQA Permitting_001286.001\GIS\Working\Proposed_Culture_Activities_Jan_21_22.mxd --- 1/21/2022 by phil.bloch



-  Longlines
-  Longlines - Brant Timing Restrictions
-  Rack and Bag
-  Aquaculture Growing Area Lease
-  Sub-lease Area