

CALIFORNIA COASTAL COMMISSION

South Coast District Office
301 E Ocean Blvd., Suite 300
Long Beach, CA 90802-4302
(562) 590-5071



W12e

5-21-0641 (CITY OF LAGUNA BEACH FIRE
DEPARTMENT)
MARCH 9, 2022

EXHIBITS

Table of Contents

Exhibit 1 – Project Location

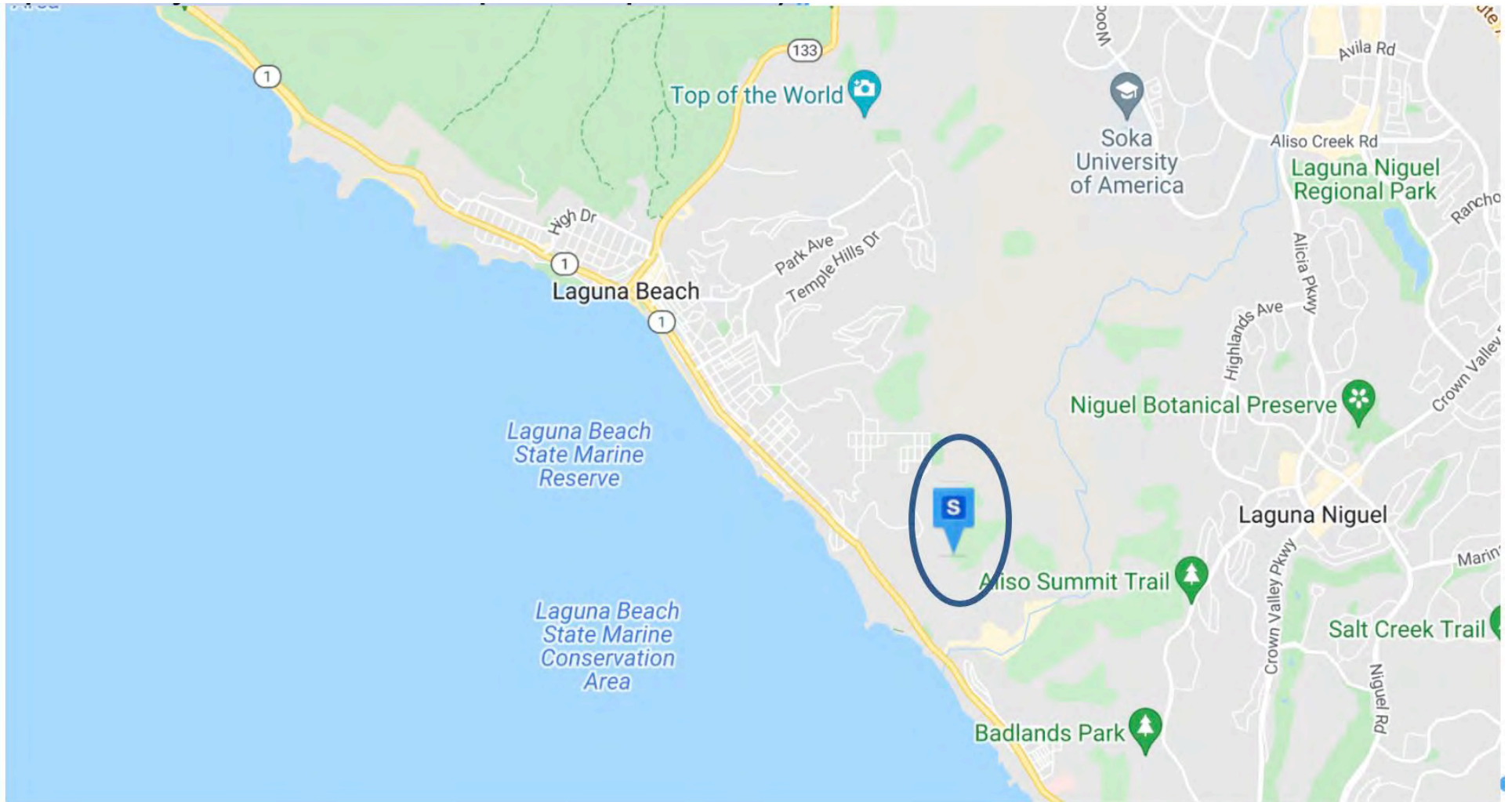
Exhibit 2 – Proposed Treatment Areas in FMZ 10 & 11

Exhibit 3 – OCTA Pacific Horizon Preserve

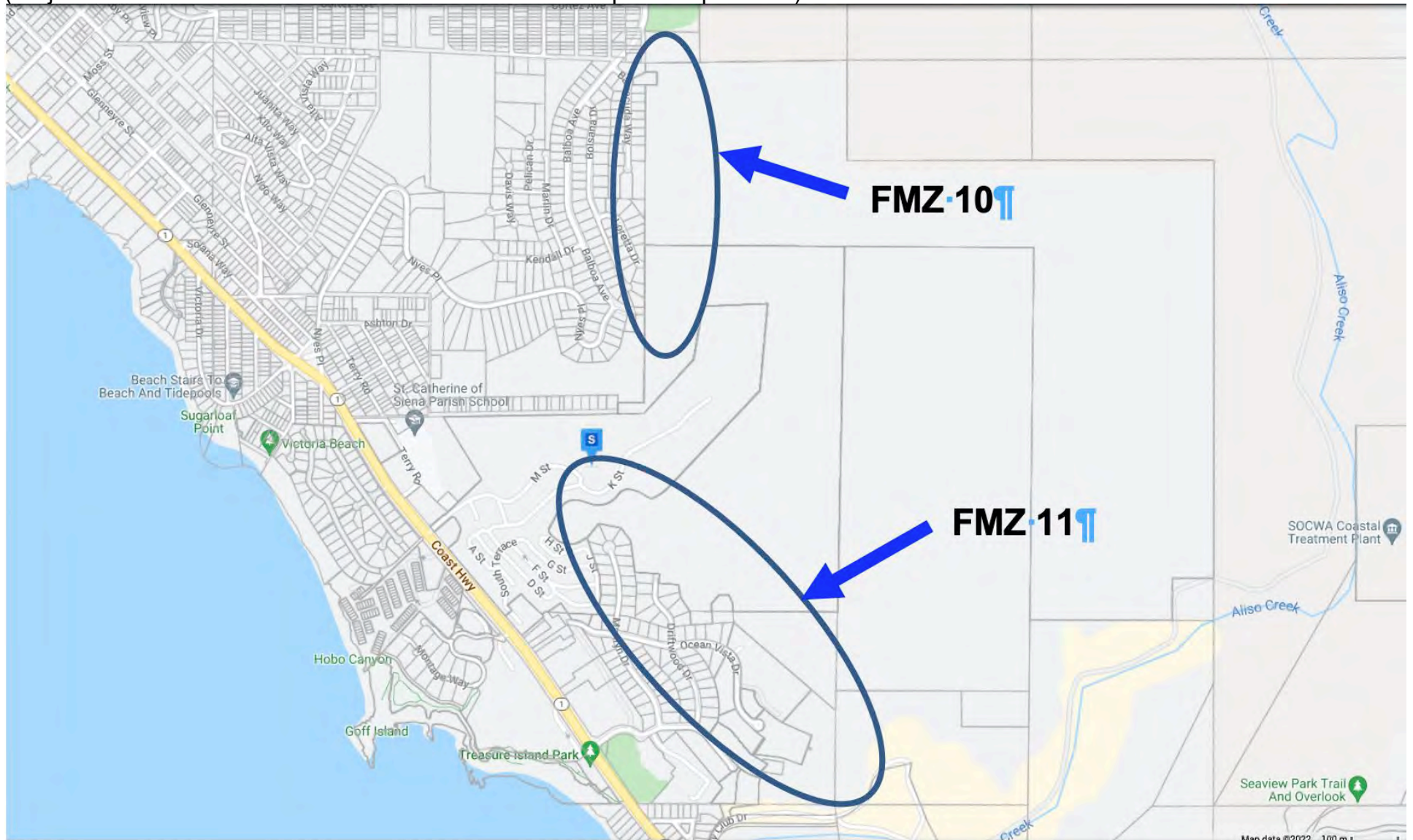
Exhibit 4 – SCE Pole Maintenance and Removal and Restoration Areas

Exhibit 5 – Hometown America Restoration Site

Project location is in Hobo/Aliso Canyon Area in City of Laguna Beach
(More specifically shown in subsequent maps below)



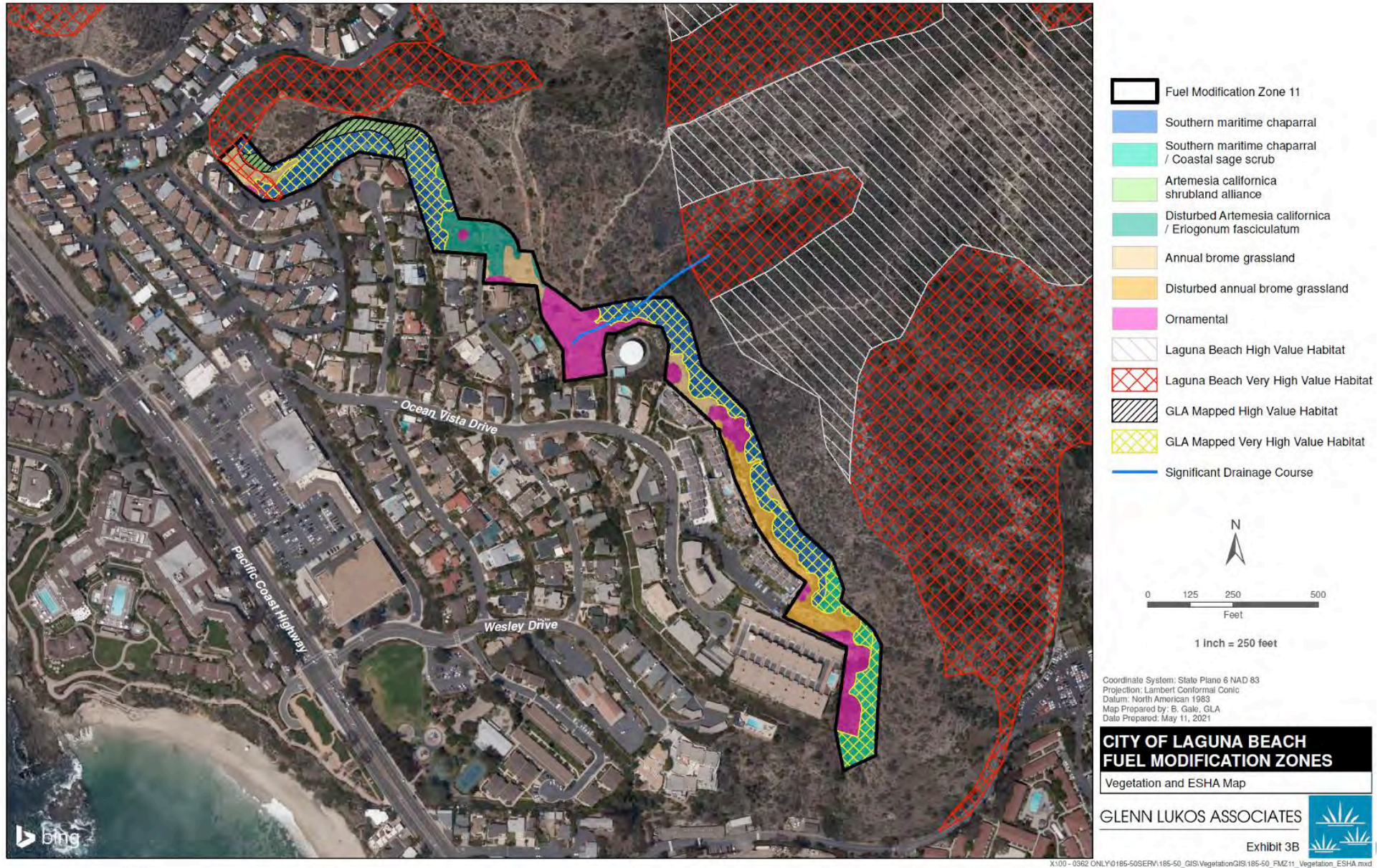
Project Site: Hobo-Aliso Canyon Area: East of Barracuda Way and Loretta Drive; and Adjacent to northern terminus of Marilyn Drive and Driftwood Drive, and east of Driftwood Drive and Ocean Vista Drive, City of Laguna Beach, Orange County (APNs: 056-240-62, 056-240-67, 056-240-68, 656-035-03, 656-191-40, 056-240-54, 056-240-56, 056-240-57, 056-240-65, 656-071-13, and 656-071-18) (Project site boundaries are shown in more detail in subsequent maps below)



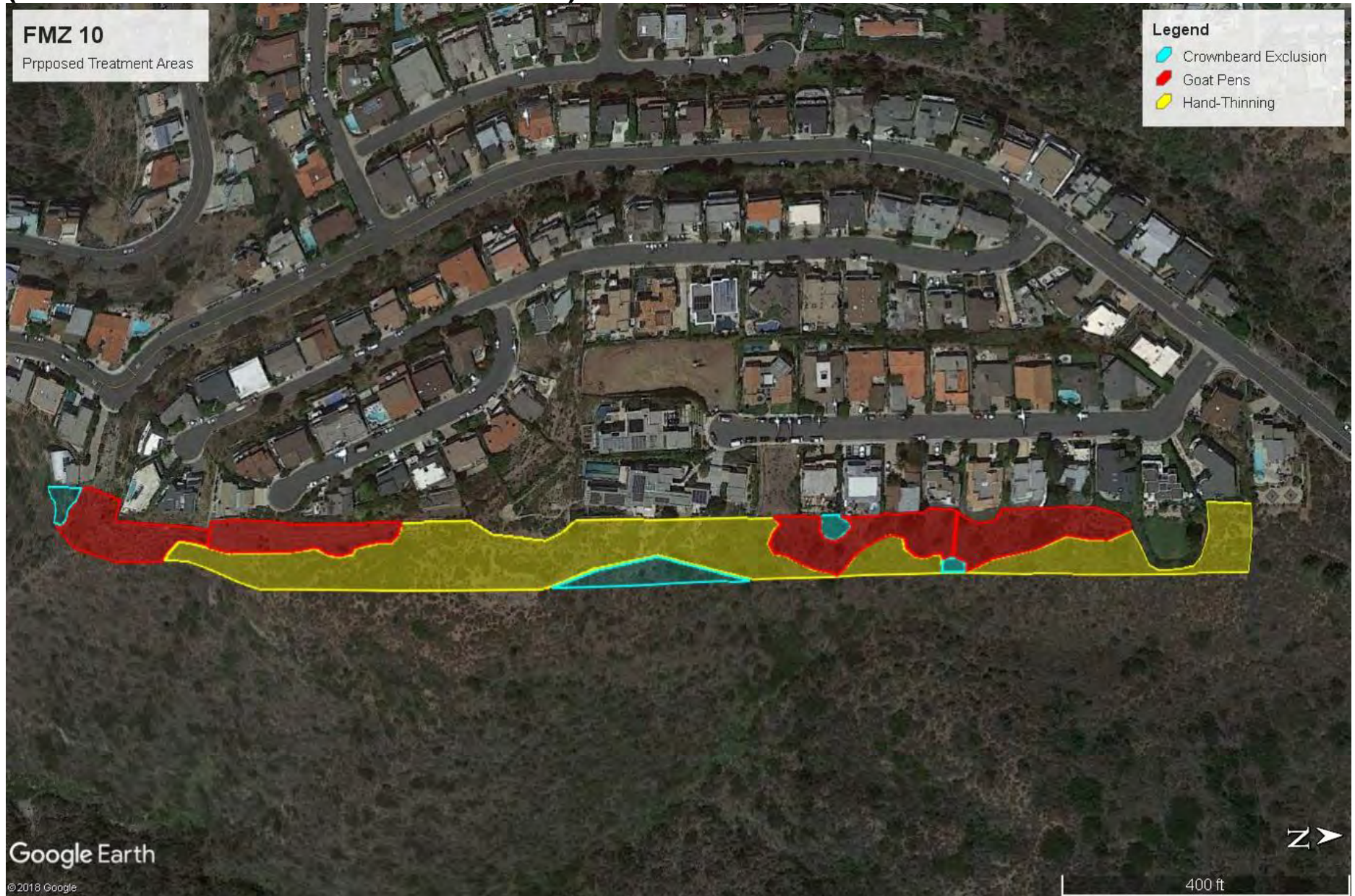
City-Designated FMZ 10:



City-Designated FMZ 11:



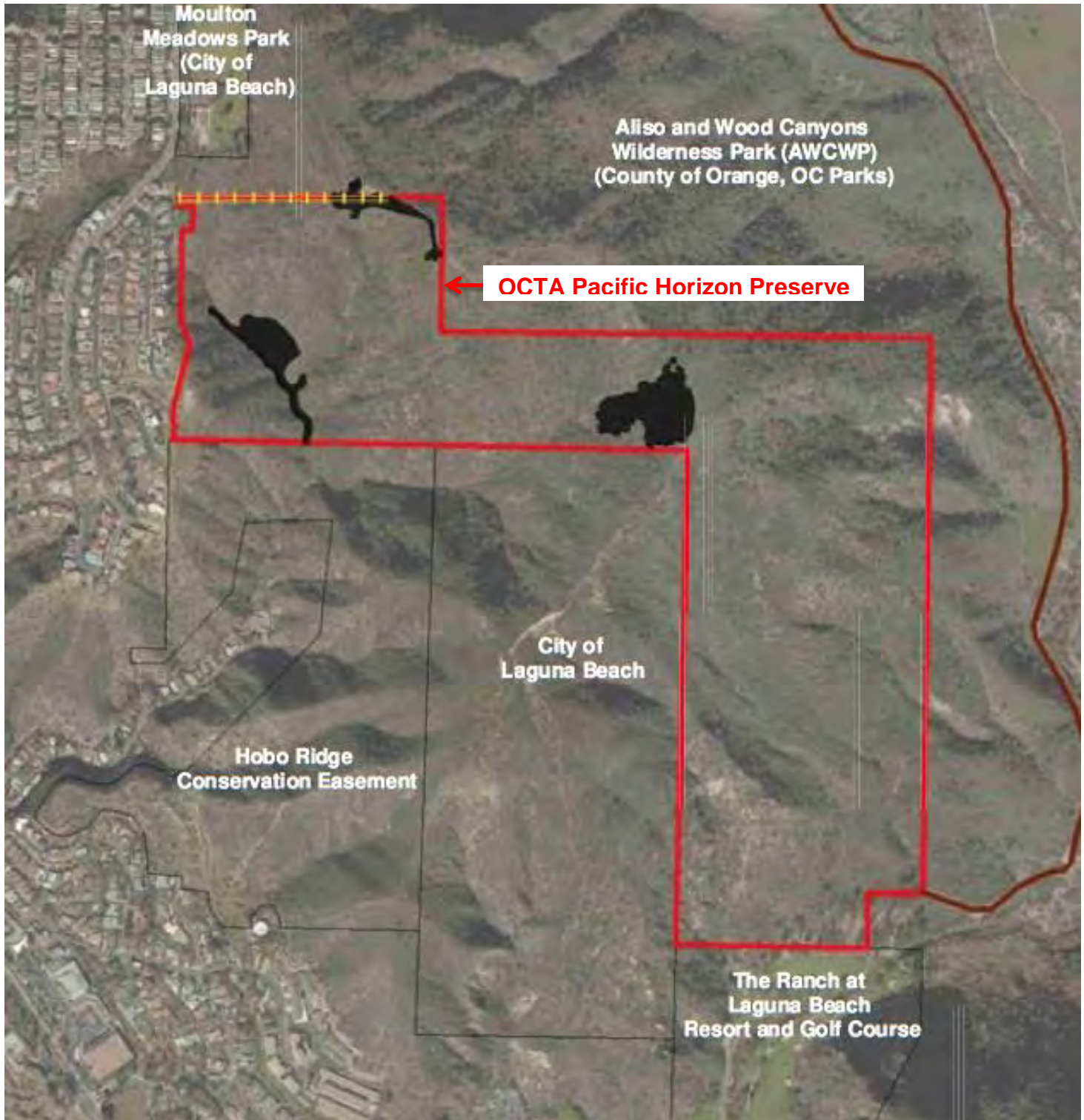
City-Designated FMZ 10: Proposed Treatment Areas (Areas with Crownbeard to be avoided)



City-Designated FMZ 11: Proposed Treatment Areas (Areas with Crownbeard to be avoided)



OCTA Pacific Horizon Preserve

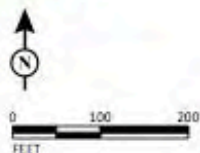


SCE Pole Maintenance and Removal and Restoration Areas



FIGURE 3

LSA



SOURCE: Bing Maps (2015); SCE (2017)

LEGEND

- Drive and Crush Access - Reuse prior path
- Existing Dirt Access Road
- Walking Path to Pole (Approximate)
- Foot Access
- Crane/Vehicle Location (Approximate)

Pole Locations

- Work Complete
- Remove Pole

- Top Half of Pole Needs to be Removed
- Top Half of Pole already Removed. Segments on Ground.

SCE1303B.1447 Driftwood GRM Project
Access Routes



- Open Space Conservation Easement
(Driftwood Properties LLC)
- Driftwood Property
(Approx. 8 acre area that was graded in the 1950s)
- SCE Driftwood Mitigation Area
(CDP 5-17-0506-A1, Special Condition 9)
- Hometown Laguna Terrace Offsite Mitigation Restoration Project (1-acre)
(CDP 5-13-0471)



Proposed Mitigation Areas and Actions (SCE CDP 5-17-0506-A1, Special Condition 9)

Pole Brushing Impact Areas

- Non-Native Vegetation Removals
- Native Vegetation Trimming
- Native Vegetation Removals

Parcel Boundaries = White Lines
(OC Public Works 2021)

- Temporary Project Access Path
- Temporary Project Fence (T-post and Rope, Total ~800 ft)
At north and south ends, closing existing trail & on access path
- On-site Mitigation Planting Areas (~0.03 acre or 1300 sqft)
Weed Management & Plant 40 1-gal container plants (25 required)
Strategic planting to close trail and reduce erosion
- Off-site Mitigation Planting Area (~0.2 acre or 8,700 sqft)
Weed Management & Plant 170 1-gal plants (100 required)
- Weed Management Buffer Areas
Area 1 (0.07 acre): High Density of Fountain Grass (*Pennisetum* sp.)
Area 2 (0.25 acre): Low Density of Nonnative Annual Grasses and Forbs

Coastal Commission

Exhibit 4

Page 3 of 3

Hometown America Restoration Site

