

CALIFORNIA COASTAL COMMISSION

SOUTH CENTRAL COAST DISTRICT
89 SOUTH CALIFORNIA ST., SUITE 200
VENTURA, CA 93001
(805) 585-1800



F17a

4-21-0204 (City of Santa Barbara, Waterfront Department)

May 19, 2022

Exhibits

Table of Contents

Exhibit 1 – Vicinity Map

Exhibit 2 – Project Location Aerial View

Exhibit 3 – Mooring/Anchoring Program Site Plan



Exhibit 1
Vicinity Map
CDP No. 4-21-0204



Image © 2022 Maxar Technologies

Exhibit 2
Project Location Aerial View
CDP No. 4-21-0204



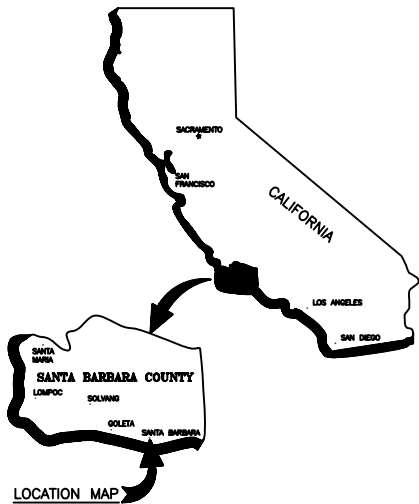
CITY OF SANTA BARBARA WATERFRONT DEPARTMENT

EAST BEACH MOORING/ANCHORING PROGRAM

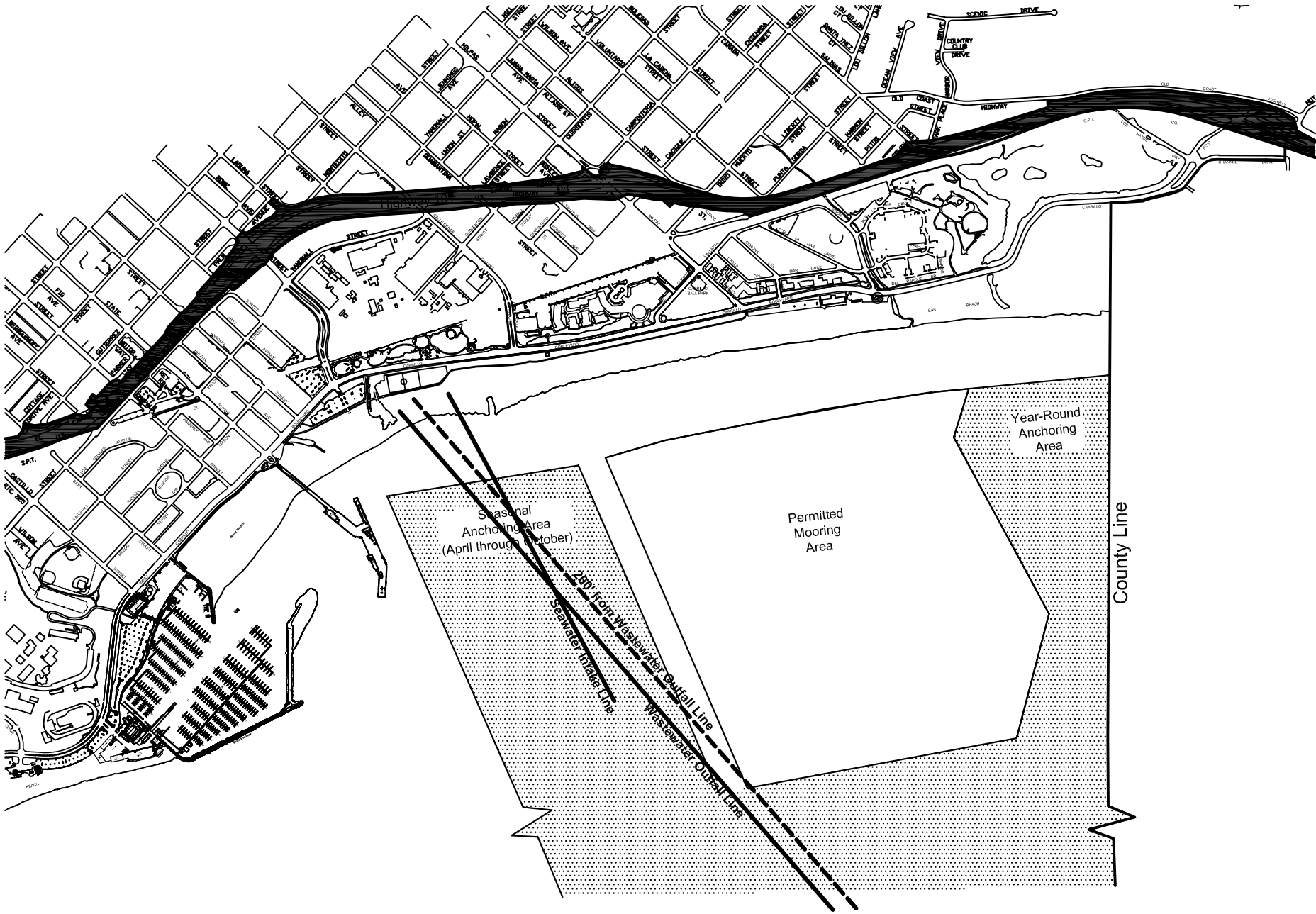
Project Statistics
A.P.N. 017-191-0WF
Zone PR- SD-3
Latitude 34° 24.59
Longitude 119° 40.13

Project Owner
City of Santa Barbara
Waterfront Department
PO Box 1990
Santa Barbara, CA 93102
(805) 564-5531

Project Description
The East Beach Mooring/Anchoring Program is designed to provide 48 mooring spaces for individually permitted vessels, plus seasonal anchoring opportunities for non-permitted vessels. By formalizing the mooring area and enforcing ground-tackle specifications for moored vessels, the Waterfront Department hopes to decrease pollution, vessel groundings on East Beach and financial impacts to the City.



Vicinity Map
NTS



Project Location
Scale 1" = 700'

Exhibit 3
Mooring/Anchoring Program
Site Plan
CDP No. 4-21-0204

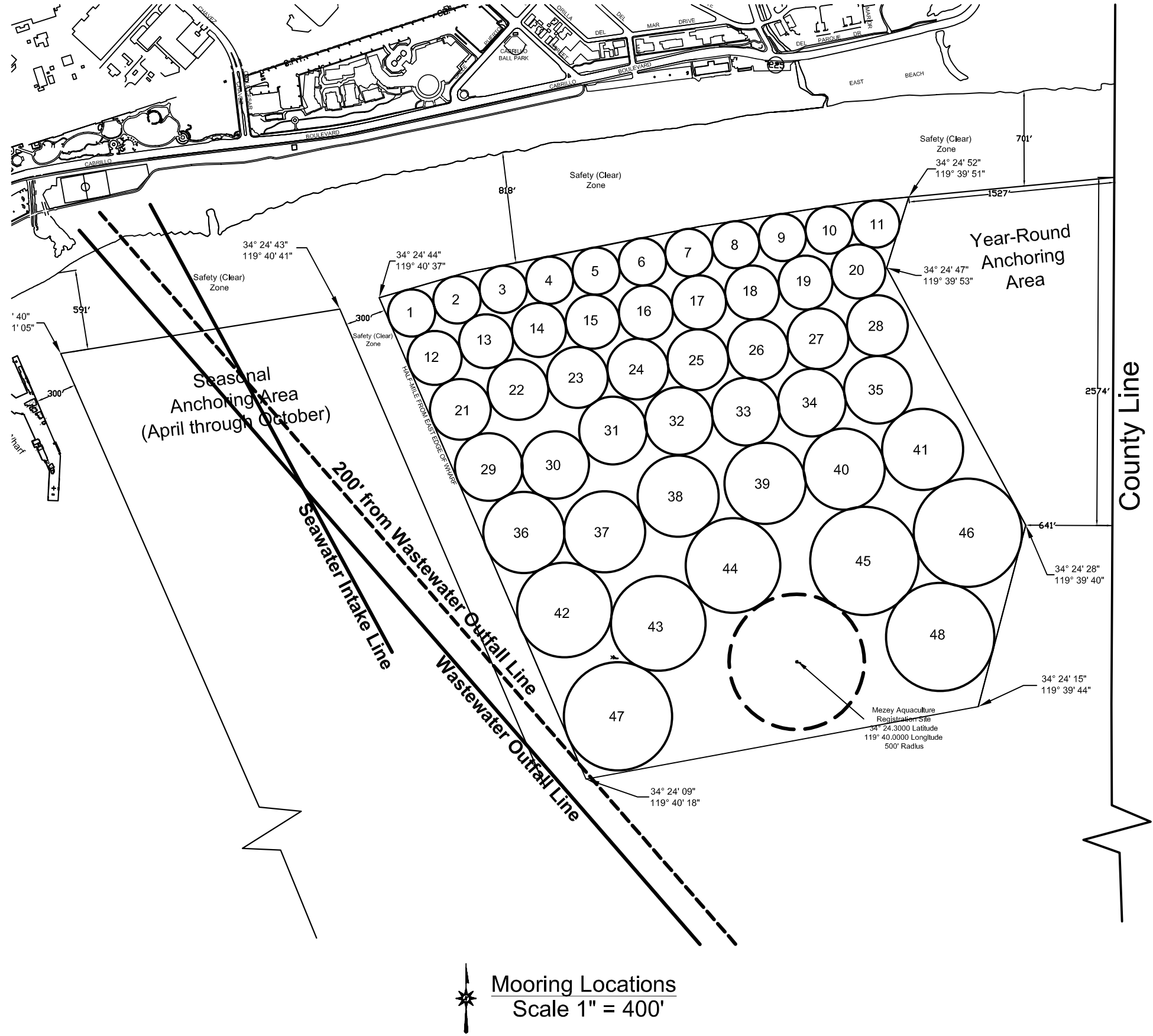
HOR. N/A
DWG. NO. 6003-009

ADD OUTFALL & INTAKE LINES	1/20/05	LN	DRAFTER L.Nelson
			DRAFTER L.Nelson
			DESIGNER L.Nelson
			CHECKER M.Kronman
			PROJ. MNGR. M.Kronman
			DRAWING DATE 7/16/04
DESCRIPTION	DATE	APPROVED	
REVISIONS			

East Beach Mooring/Anchoring Program
City of Santa Barbara
Waterfront Department

CITY OF SANTA BARBARA
WATERFRONT DEPARTMENT

Mooring Space Details			
Space #	Diameter	Latitude	Longitude
1	350'	34° 24.7167	119° 40.5667
2	350'	34° 24.7333	119° 40.5000
3	350'	34° 24.7500	119° 40.4333
4	350'	34° 24.7667	119° 40.3667
5	350'	34° 24.7667	119° 40.3000
6	350'	34° 24.7833	119° 40.2333
7	350'	34° 24.8000	119° 40.1667
8	350'	34° 24.8000	119° 40.1000
9	350'	34° 24.8167	119° 40.0333
10	350'	34° 24.8333	119° 39.9667
11	350'	34° 24.8333	119° 39.9000
12	400'	34° 24.6667	119° 40.5333
13	400'	34° 24.6833	119° 40.4667
14	400'	34° 24.7000	119° 40.3833
15	400'	34° 24.7167	119° 40.3000
16	400'	34° 24.7167	119° 40.2333
17	400'	34° 24.7333	119° 40.1500
18	400'	34° 24.7500	119° 40.0667
19	400'	34° 24.7667	119° 40.0000
20	400'	34° 24.7833	119° 39.9167
21	450'	34° 24.6000	119° 40.5000
22	450'	34° 24.6333	119° 40.4167
23	450'	34° 24.6500	119° 40.3333
24	450'	34° 24.6500	119° 40.2333
25	450'	34° 24.6667	119° 40.1500
26	450'	34° 24.6833	119° 40.0667
27	450'	34° 24.7000	119° 39.9833
28	450'	34° 24.7167	119° 39.8833
29	500'	34° 24.5333	119° 40.4500
30	500'	34° 24.5333	119° 40.3667
31	500'	34° 24.5833	119° 40.2833
32	500'	34° 24.5833	119° 40.1833
33	500'	34° 24.6000	119° 40.0833
34	500'	34° 24.6167	119° 39.9833
35	500'	34° 24.6333	119° 39.8833
36	600'	34° 24.4500	119° 40.4000
37	600'	34° 24.4500	119° 40.2833
38	600'	34° 24.5000	119° 40.1833
39	600'	34° 24.5167	119° 40.0500
40	600'	34° 24.5333	119° 39.9333
41	600'	34° 24.5667	119° 39.8167
42	700'	34° 24.3667	119° 40.3500
43	700'	34° 24.3500	119° 40.2000
44	700'	34° 24.4167	119° 40.1000
45	800'	34° 24.4167	119° 39.9000
46	800'	34° 24.4667	119° 39.7500
47	800'	34° 24.2333	119° 40.2667
48	800'	34° 24.3333	119° 39.7833



ADD OUTFALL & INTAKE LINES	1/20/05	LN	DRAFTER L.Nelson
			DRAFTER
			DESIGNER L.Nelson
			CHECKER
			PROJ. MNGR M.Kronman
			DRAWING DATE 7/16/04
DESCRIPTION	DATE	APPROVED	
REVISIONS			

East Beach Mooring/Anchoring Program
City of Santa Barbara
Waterfront Department

CITY OF SANTA BARBARA
WATERFRONT DEPARTMENT- FACILITIES DIVISION

SCALE: Noted
FACTOR:
VERT. N/A
HOR. N/A

PROJ.NO. _____
SHT. 2 OF 2 SHTS.
DWG.NO. 6003-009



CITY OF SANTA BARBARA WATERFRONT DEPARTMENT

EAST BEACH MOORING/ANCHORING PROGRAM

Project Statistics

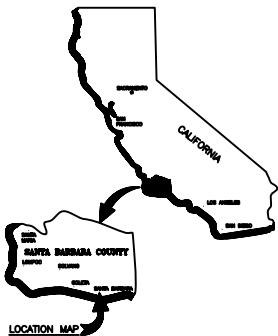
A.P.N. 017-191-0WF
Zone PR- SD-3
Latitude 34° 24.59
Longitude 119° 40.13

Project Owner

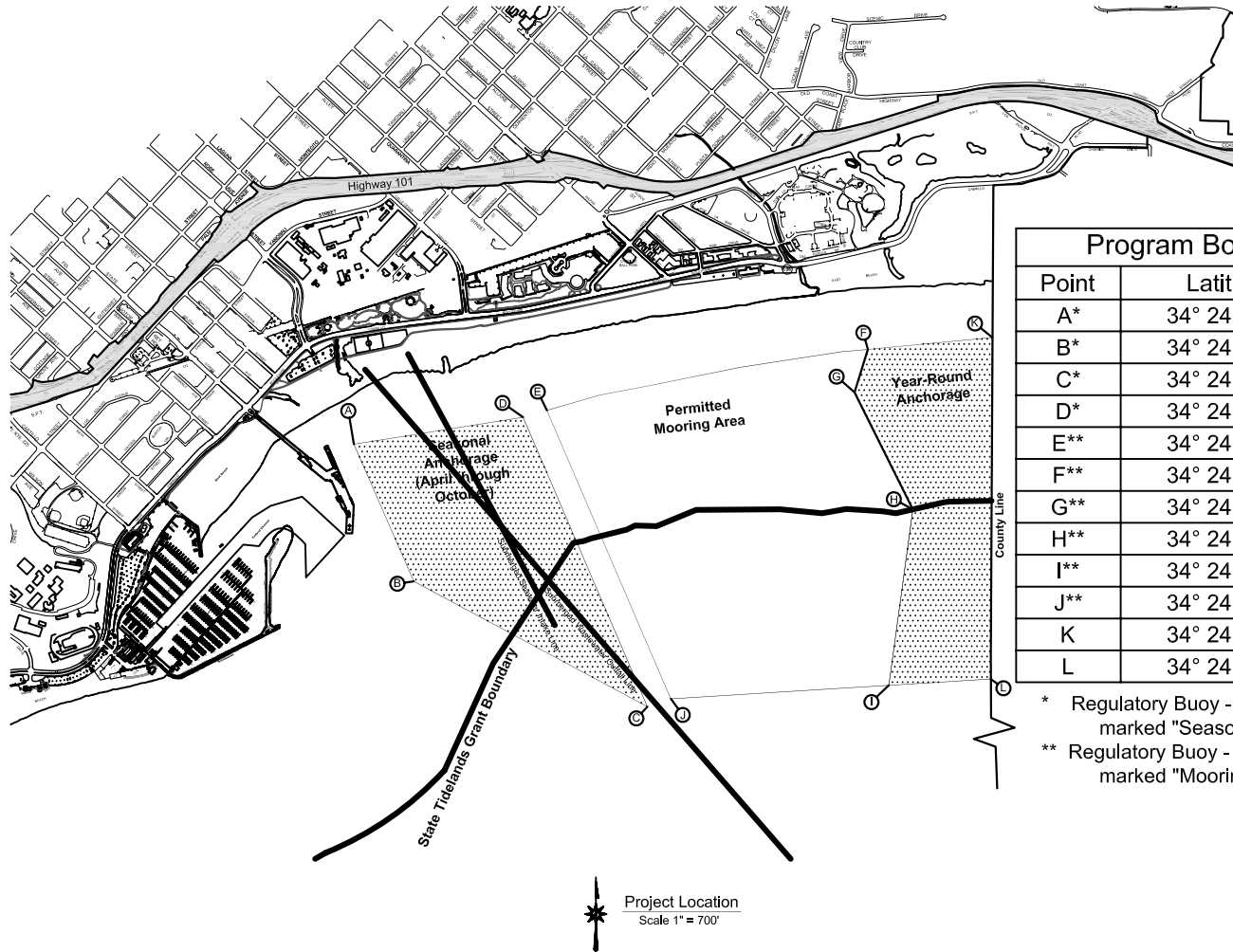
City of Santa Barbara
Waterfront Department
PO Box 1990
Santa Barbara, CA 93102
(805) 564-5531

Project Description

The East Beach Mooring/Anchoring Program is designed to provide 48 mooring spaces for individually permitted vessels, plus seasonal anchoring opportunities for non-permitted vessels. By formalizing the mooring area and enforcing ground-tackle specifications for moored vessels, the Waterfront Department hopes to decrease pollution, vessel groundings on East Beach and financial impacts to the City.



Vicinity Map
NTS



Program Boundaries and Buoys

Point	Latitude	Longitude
A*	34° 24.6608'	119° 41.0896'
B*	34° 24.3870'	119° 40.9384'
C*	34° 24.1428'	119° 40.3669'
D*	34° 24.7207'	119° 40.6802'
E**	34° 24.7354'	119° 40.6227'
F**	34° 24.8687'	119° 39.8462'
G**	34° 24.7819'	119° 39.8769'
H**	34° 24.5485'	119° 39.7307'
I**	34° 24.1937'	119° 39.7819'
J**	34° 24.1593'	119° 40.3102'
K	34° 24.8968'	119° 39.5443'
L	34° 24.2098'	119° 39.5346'

- * Regulatory Buoy - no light
marked "Seasonal Anchoring Area"
- ** Regulatory Buoy - 2 mile Amber Light, 15 FPM
marked "Mooring Area - Permit Required"

ADD OUTFALL & INTAKE LINES	1/20/05	LA	DRAFTER	L.Arroyo
FINALIZE MOORING/ANCHORING BOUNDARIES	2/14/05	MK	DRAFTER	J. J.
CREATE SHEET 3 WITH LAT LONG IN DD_MM_SS	8/30/05	MK	DESIGNER	L.Arroyo
			CHECKER	M.Kronman
			PROJ. MGR.	M.Kronman
			DRAWING DATE	7/16/04
DESCRIPTION	DATE	APPROVED		
REVISIONS				

East Beach Mooring/Anchoring Program
City of Santa Barbara
Waterfront Department

CITY OF SANTA BARBARA
WATERFRONT DEPARTMENT- FACILITIES DIVISION

SCALE: Noted
FACTOR: N/A
VERT: N/A
HOR: N/A
PROJ. NO.
SHT. 1 OF 2 SHTS.
DWG. NO. 6003-014