

CALIFORNIA COASTAL COMMISSION

455 MARKET STREET, SUITE 300
SAN FRANCISCO, CA 94105-2219
FAX (415) 904-5200
TDD (415) 904-5400



W12a

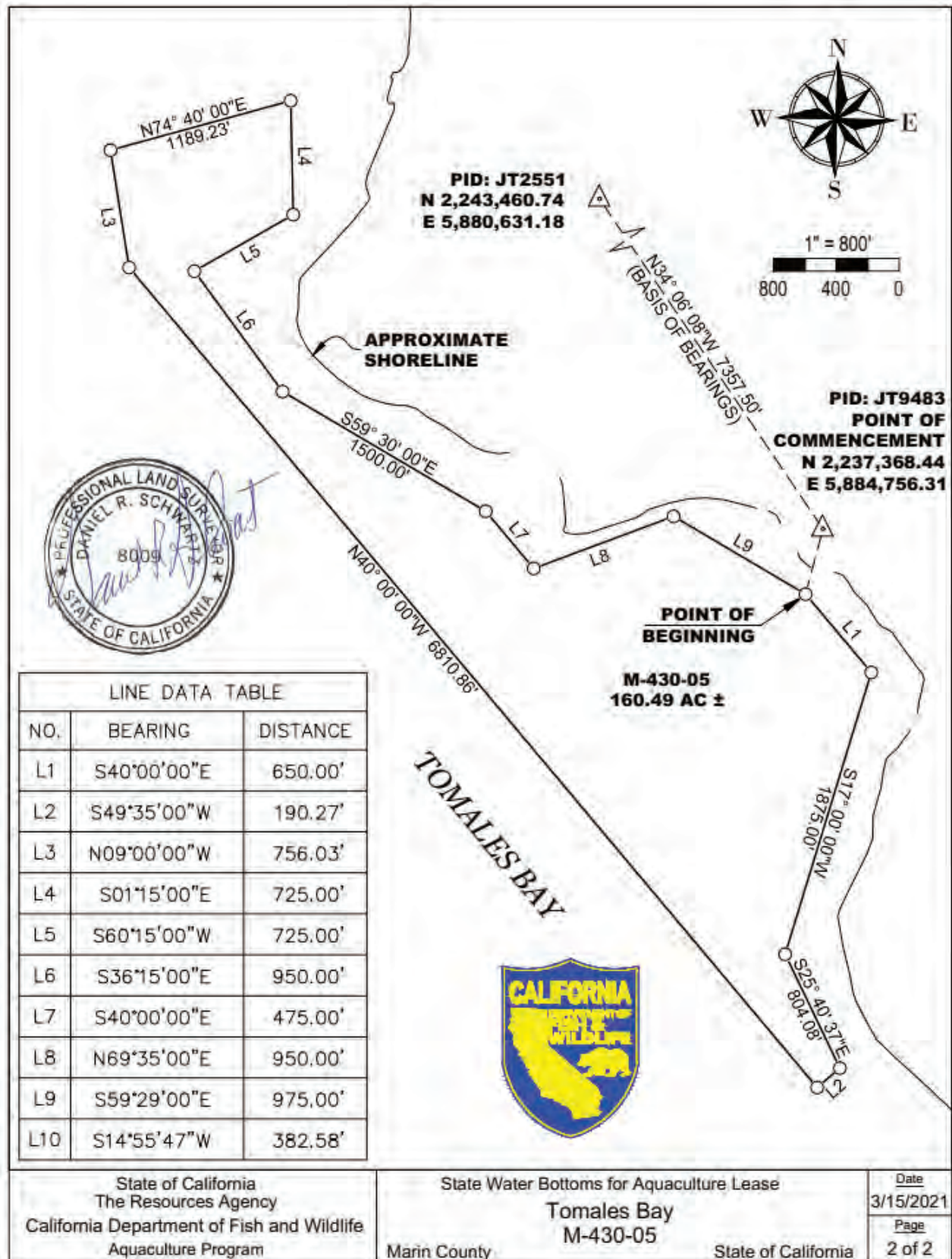
CDP Application No.: 9-19-1242
(Tomaes Bay Oyster Company, LLC)

August 10, 2022

EXHIBITS

- Exhibit 1 – M-430-05 lease boundaries as amended by CDFW
- Exhibit 2 – Vessel transit route
- Exhibit 3 – Eelgrass map
- Exhibit 4 – Mitigation plan for legacy gear removal and current gear configuration
- Exhibit 5 – Marine debris hotspots
- Exhibit 6 – Seawater intake diagram


EXHIBIT 1





TBOC Boat Launch

Boat launch and loading area adjacent to dock

Legend

 M-430-05 Boundry

 Tomales Bay Oyster Company

 Vessel Transit Routes

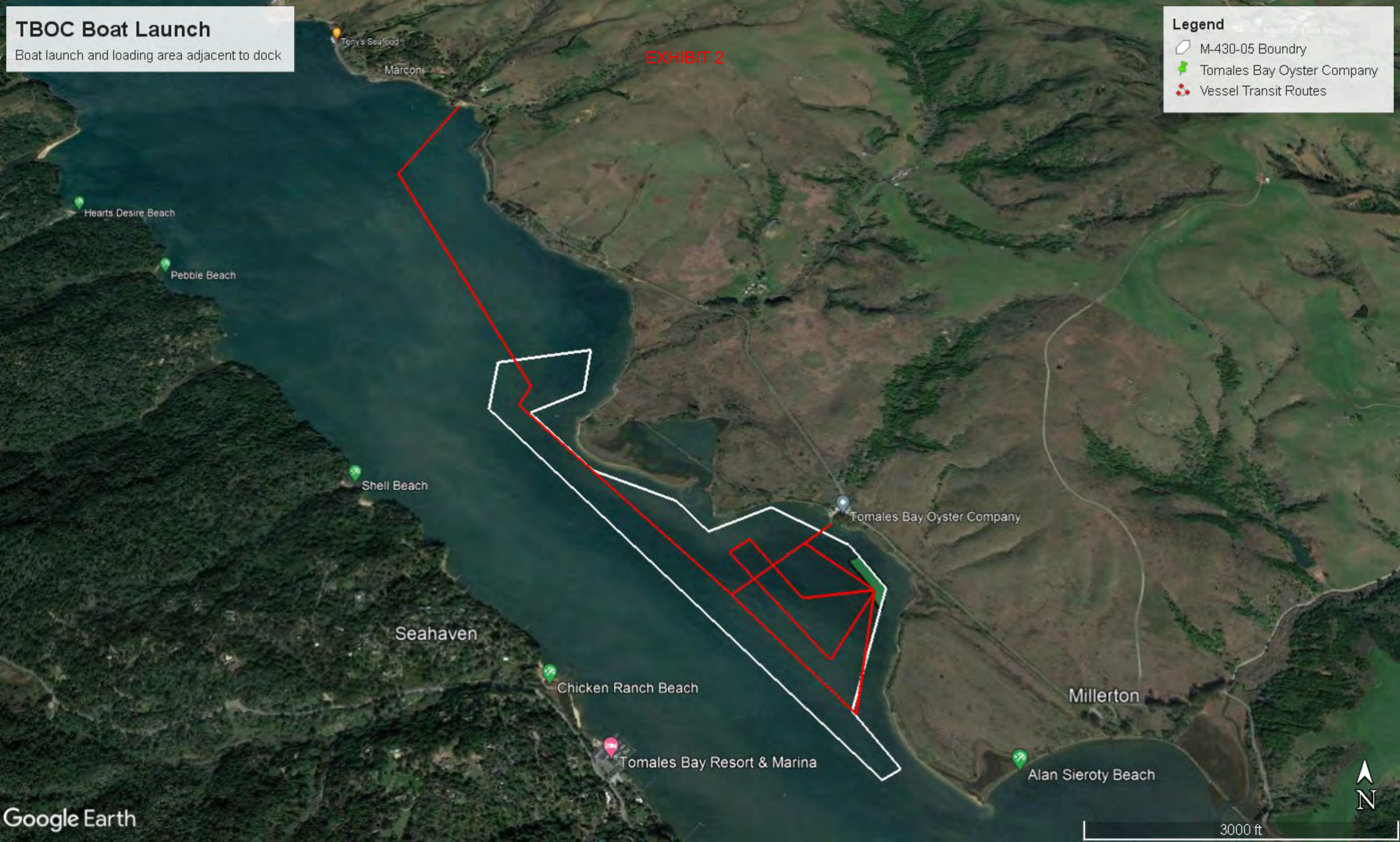


EXHIBIT 2

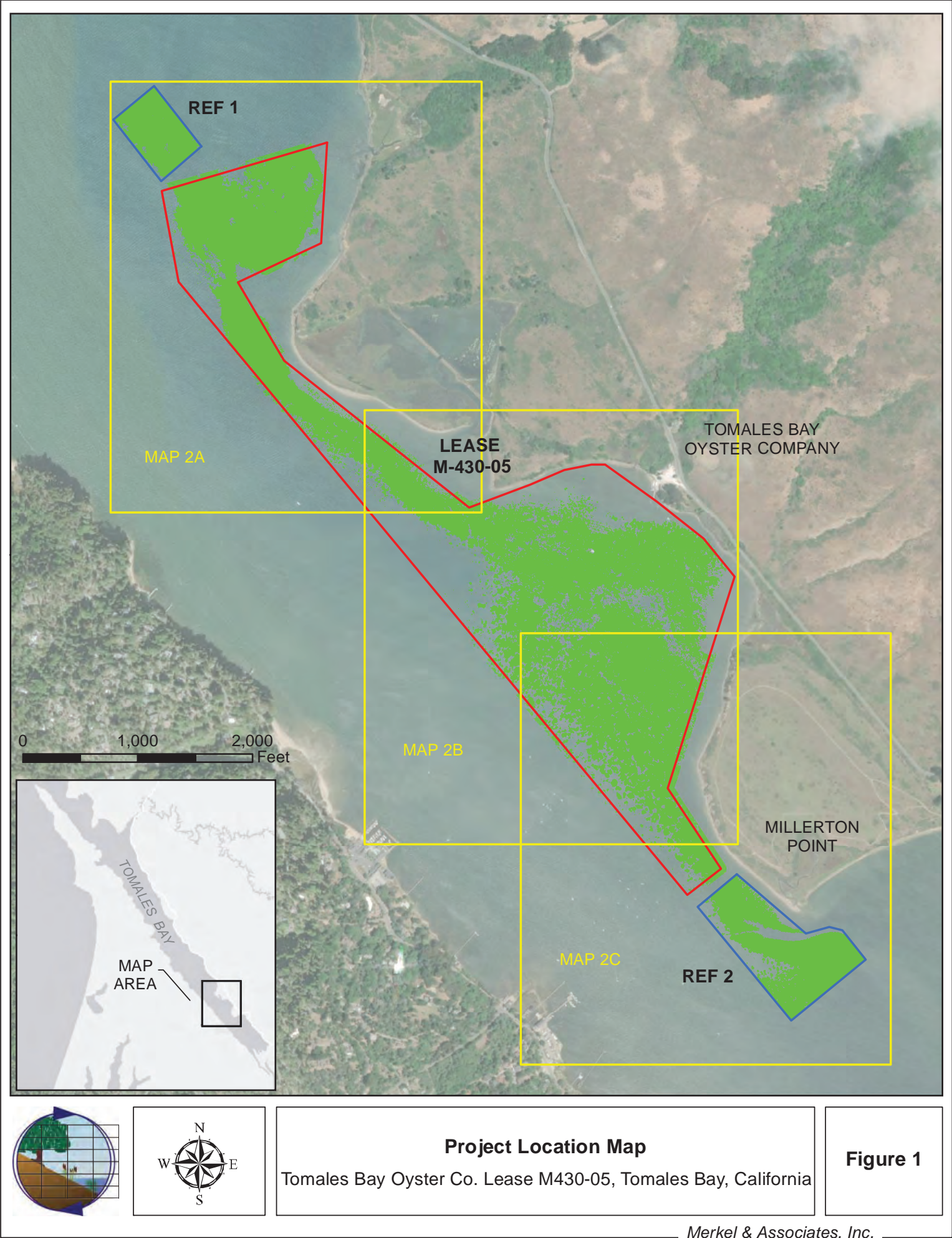


EXHIBIT 4

This document is to provide a summary of approximate amount of legacy gear removed from Aquaculture lease M-430-05 over the past 7 years

Mitigation Proposal:

...summary of the amount of legacy gear... collected and removed from 430-05 over the past several years (volume or estimate of area occupied) along with an estimate of the amount remaining, approximate timeline for its removal, and commitment to continue and complete that removal effort. This work provides a direct benefit to marine life and habitats in the bay so it would be helpful to be able to quantify it.

Legacy Gear Removed From M-430-05

| Year | Hardware, racks, poles, lines | Area cover |
|-------|-------------------------------|------------|
| 2022 | 35 yd ³ | 1.2 acres |
| 2021 | 5 yd ³ | .3 acres |
| 2020 | 8 yd ³ | .5 acres |
| 2019 | 65 yd ³ | 1.5 acres |
| 2018 | 175 yd ³ | 5 acres |
| 2017 | 140 yd ³ | 4 acres |
| 2016 | 140 yd ³ | 4.5 acres |
| 2015 | 200 yd ³ | 7 acres |
| Total | 628 yd ³ | 24 acres |

Remaining legacy gear covers approximately 5.5 acres in 4 areas, 2 on Tomasini Point and 2 in the south corner of the cove. The remaining gear consists of 8 iron racks, about 1,000 pvc poles in an old stake and line system, some old rope lines and associated stakes in an old bottom bag system, some concrete anchors with pipes and some metal stakes.

Removal timeline should be about 2-2.5 years, working on good tides, midweek, when routine planting and harvest activity allows, and weather permitting.



Acreage of Each Polygon (listed from North to South)

| Polygone | Acreage |
|------------------|------------------------------------------------|
| Tomasini F.L. N. | 7.42 |
| Tomasini B.L. N. | 2.1 |
| Tomasini B.L. W. | 4.67 (3.83 to be retained, 0.84 to be removed) |
| Cove #4 | 3.92 |
| Cove #3 | 9.69 |
| Cove #2 | 1.1 |
| Cove #1 | 1.1 |
| Cove B.L. | 2.54 |
| Cove #0 | .31 |
| Janice | .55 |
| Alice | .18 |
| Marina | 2.65 |

EXHIBIT 5



Locations (in red) of marine debris “hotspots” to be focused on by permittee for marine debris cleanups under special condition 6. TBOC lease M-430-05 is in shaded yellow.

EXHIBIT 6

Diagram of intake "filter"

