

CALIFORNIA COASTAL COMMISSION

SAN DIEGO DISTRICT OFFICE
7575 METROPOLITAN DRIVE, SUITE 103
SAN DIEGO, CA 92108-4402
VOICE (619) 767-2370
FAX (619) 767-2384



W17a, W18d

CDP No. 6-22-0578

NCC-NOID-0002-22

(I-5 NCC Project Phase 1, Stage 4C)

August 10, 2022

EXHIBITS

Table of Contents

EXHIBIT 1: North Coast Corridor Regional Map

EXHIBIT 2: Project Location Map

EXHIBIT 3: PWP/TREP Phasing Plan

EXHIBIT 4: Mitigation Sites Map

EXHIBIT 5: Site Photos

EXHIBIT 6: Project Plans



EXHIBIT NO. 1

APPLICATION NO.
NCC-NOID-0002-22
CDP-6-22-0578

Project Vicinity Map
Page 1 of 1



California Coastal Commission



**Stage 4C
Project Limit**

**Stage 4C
Project Limit**

I-5 North Coast Corridor Phase 1-Stage 4C


EXHIBIT NO. 2
APPLICATION NO. NCC-NOID-0002-22 CDP-6-22-0578
Project Location Map Page 1 of 1
 California Coastal Commission

TABLE 6A-1: PHASING PLAN

Phase	Project Phase Benefits (Estimated)	Highway	Bicycle & Pedestrian/ Community Enhancements	Rail & Transit*	Environmental
2010-2020	<ul style="list-style-type: none">• 29.7 lane-miles of new HOV facilities• 5.3 miles of new rail double-tracking• 6.3 miles of new bike/ped facilities (1.3 miles of improved facilities)• 2 new bike/ped crossings (4 improved crossings)• 220 acres of environmental mitigation• Potential enhancements to San Elijo Lagoon (491-acre system)*• Capital investment:<ul style="list-style-type: none">– \$1,037M highway & bike/ped– \$259M rail & transit– \$170M environmental*	<ul style="list-style-type: none">• 2 HOV lanes from Manchester Av to SR 78<ul style="list-style-type: none">– San Elijo Lagoon Bridge Replacement– Batiquitos Lagoon Bridge Replacement– Manchester Av DAR– San Elijo Multi-Use Facility	Highway Adjacent <ul style="list-style-type: none">• EN#1 Bike/Ped Trail on Both Sides of I-5 at San Elijo• EN#5A Encinitas Blvd Bike/Ped Enhancements• EN#2B Villa Cardiff & MacKinnon Bridge Enhancements• EN#8 Manchester Avenue Trail to Nature Center• SB#3 Gateway Open Space Preservation Site• CB#1A Bike/Ped Trail & Bridge on W Side of Batiquitos• CB#2 Trail on NE Side of I-5 at Batiquitos Lagoon• I-5 North Coast Bike Trail (<i>San Elijo and Batiquitos segments</i>)• Manchester Ave Undercrossing Improvements	<ul style="list-style-type: none">• Eastbrook to Shell Double Track• Oceanside Through Track• Batiquitos Lagoon Double Track<ul style="list-style-type: none">– Batiquitos Bridge replacement• San Elijo Lagoon Double Track<ul style="list-style-type: none">– San Elijo Bridge replacement• Poinsettia Station Improvements• Parking improvements at selected rail stations (currently under prioritization study)	<ul style="list-style-type: none">• San Dieguito W19 Establishment Site• Hallmark (East & West) Establishment Site• Dean Family Trust Establishment Site• Batiquitos Bluffs Restoration & Preservation/Enhancement Site• Deer Canyon II Establishment Site• Laser Preservation/Enhancement Site• La Costa (Ayoub) Site Preservation & Enhancement• San Elijo Lagoon Preservation/Enhancement• Lagoon Mgmt/Endowment/Regional Dredging Program
		<ul style="list-style-type: none">• 2 HOV lanes from La Jolla Village Dr to I-5/I-805<ul style="list-style-type: none">– Voigt Dr DAR• I-5/I-805 HOV Connectors<ul style="list-style-type: none">– Peñasquitos Creek Bridge– Soledad Creek Bridge	<ul style="list-style-type: none">• Voigt Dr Overcrossing & Realignment Improvements		
			LOSSAN Adjacent <ul style="list-style-type: none">• Coastal Rail Trail (<i>Chesterfield Dr to G St</i>)• Coastal Rail Trail (<i>G St to Leucadia Blvd</i>)• Coastal Rail Trail (<i>Leucadia Blvd to La Costa Av</i>)		

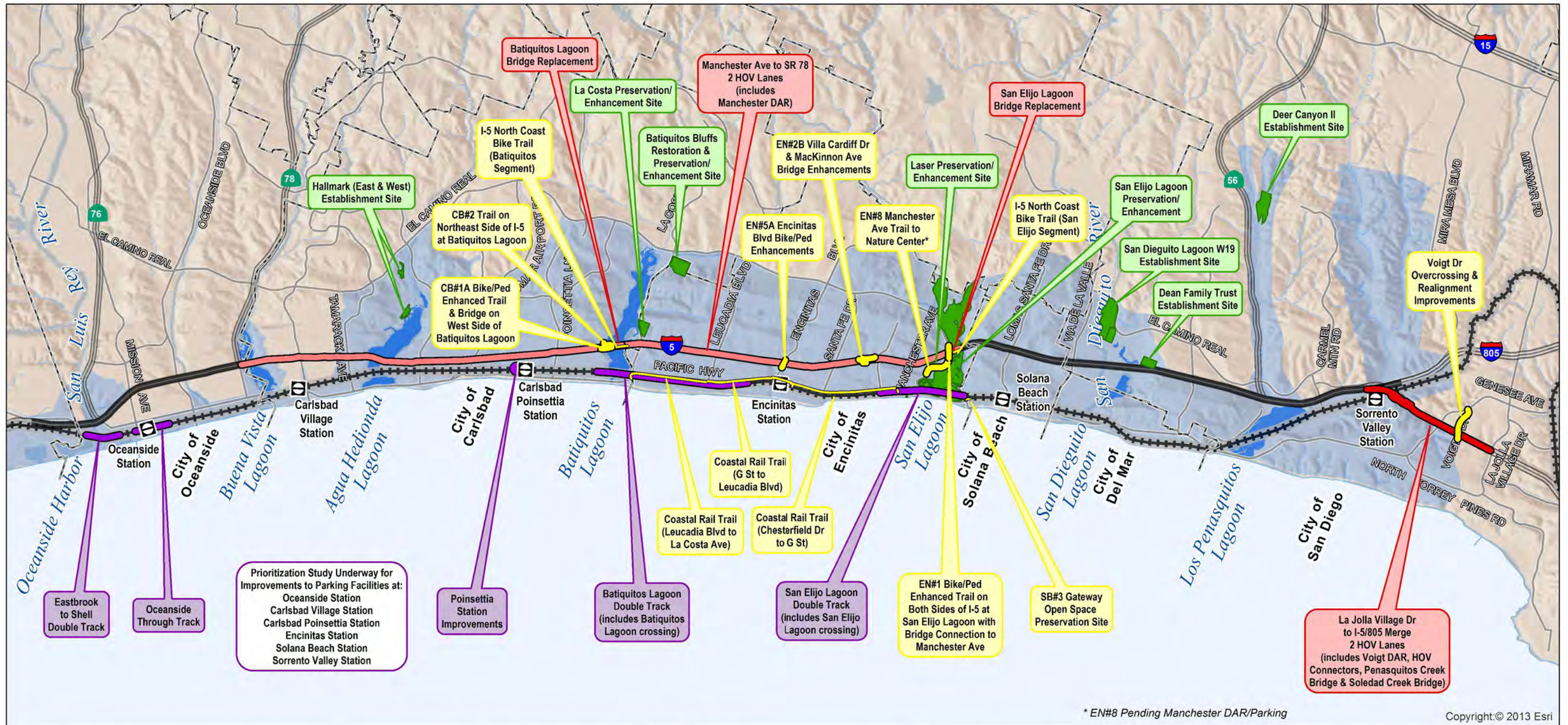
* Both the Buena Vista and San Elijo Lagoon restoration projects could be eligible for a \$90M funding pool if all regulatory permits are obtained. The available funds could go to one lagoon or be shared between them. For purposes of this table, the \$90M is split evenly between the two lagoons until actual allocations are determined.

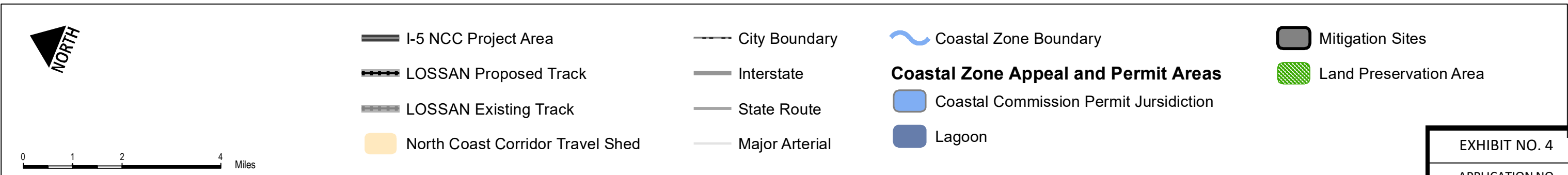
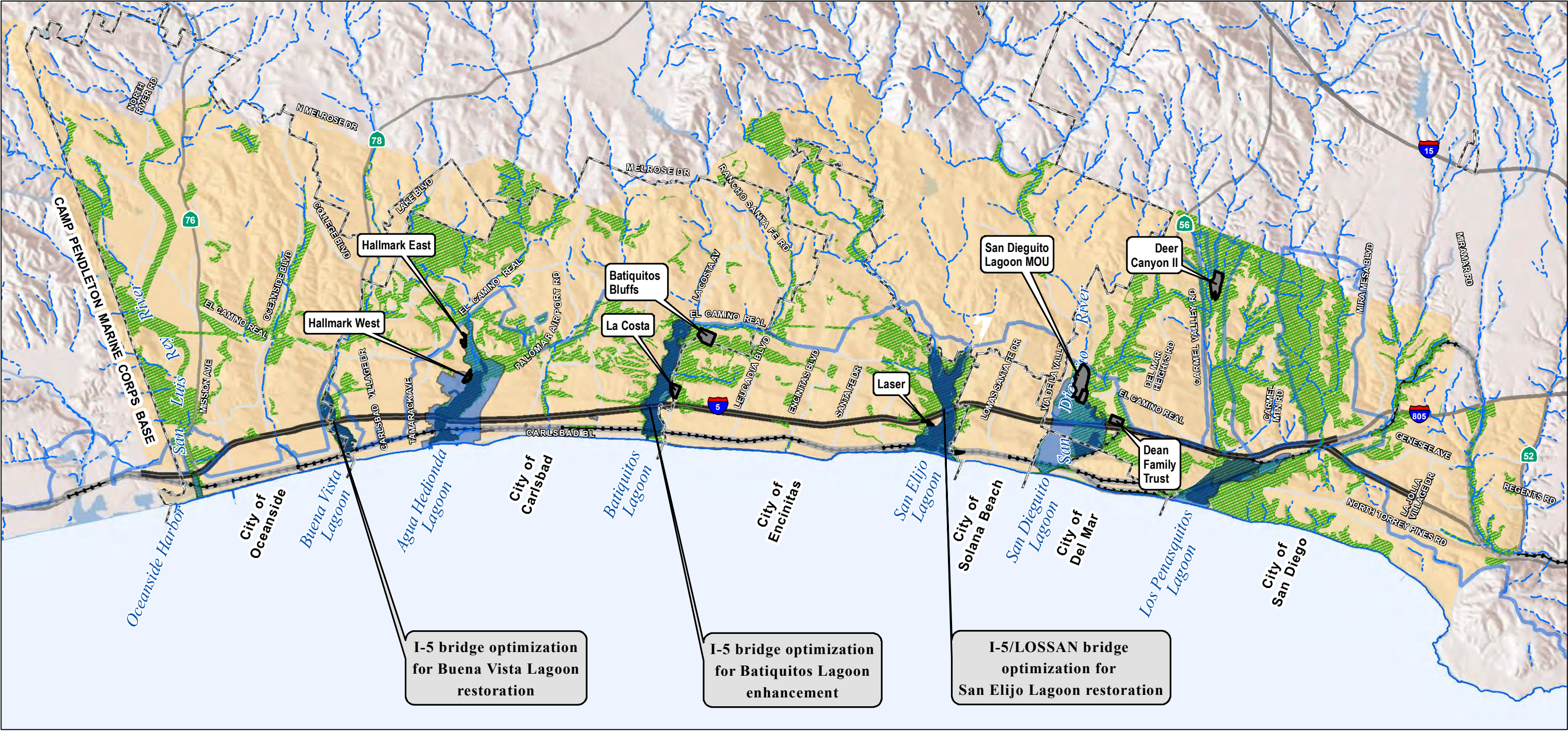
EXHIBIT NO. 3

APPLICATION NO.
NCC-NOID-0002-22
CDP-6-22-0578

PWP / TREP Phasing Plan
Page 1 of 2

 California Coastal Commission





DATA SOURCES: Caltrans, California Coastal Commission, Local Jurisdictions, SanGIS, SANDAG, Imagery: DigitalGlobe March 2008

The Coastal Zone boundary, jurisdiction and Local Coastal Program data in this map are for planning and engineering study purposes only. Data are derived from multiple sources. The digital Coastal Zone boundary, jurisdiction and Local Coastal Program data in this map have not been adopted by the Coastal Commission, and do not supersede the official versions certified by the Coastal Commission as may be amended from time to time. Disclaimer: The State of California makes no representations or warranties regarding the accuracy or completeness of the files or the data from which they were derived. The State shall not be liable under any circumstances for any direct, indirect, special, incidental or consequential damages with respect to any claim by any user or any third party on account of or arising from the use of these Coastal Zone boundary, jurisdiction and Local Coastal Program files or the data from which they were derived. Because the Coastal Zone boundary, jurisdiction and Local Coastal Program data files are merely representational, they and the data from which they were derived are not binding and may be revised at any time.

Resource Enhancement and Mitigation Program Overview

North Coast Corridor PWP/TREP

FINAL: JUNE 2014

EXHIBIT NO. 4

APPLICATION NO.
NCC-NOID-0002-22
CDP-6-22-0578

Mitigation Site Map
Page 1 of 1

California Coastal Commission



EXHIBIT NO. 5

APPLICATION NO.
NCC-NOID-0002-22
CDP-6-22-0578

Site Photos
Page 1 of 3



California Coastal Commission



EXHIBIT NO. 5

APPLICATION NO.
NCC-NOID-0002-22
CDP-6-22-0578

Site Photos
Page 2 of 3



California Coastal Commission



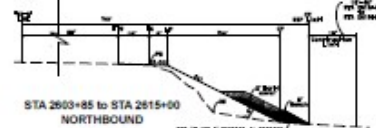
EXHIBIT NO. 5

APPLICATION NO.
NCC-NOID-0002-22
CDP-6-22-0578

Site Photos
Page 3 of 3



California Coastal Commission



Legend	
Wetland Limits	Construction Limits
Right of Way	Revegetation
Contours Grading	Proposed Drainage
Rock Slope Protection (RSP) Limits	Bridge Railing Replacement with Open Railing

I-5 NCC Segment 4C
Agua Hedionda Lagoon
Project Features Map
June 21, 2022

EXHIBIT NO. 6

APPLICATION NO.
NCC-NOID-0002-22
CDP-6-22-0578

Project Plans
Page 1 of 5



California Coastal Commission

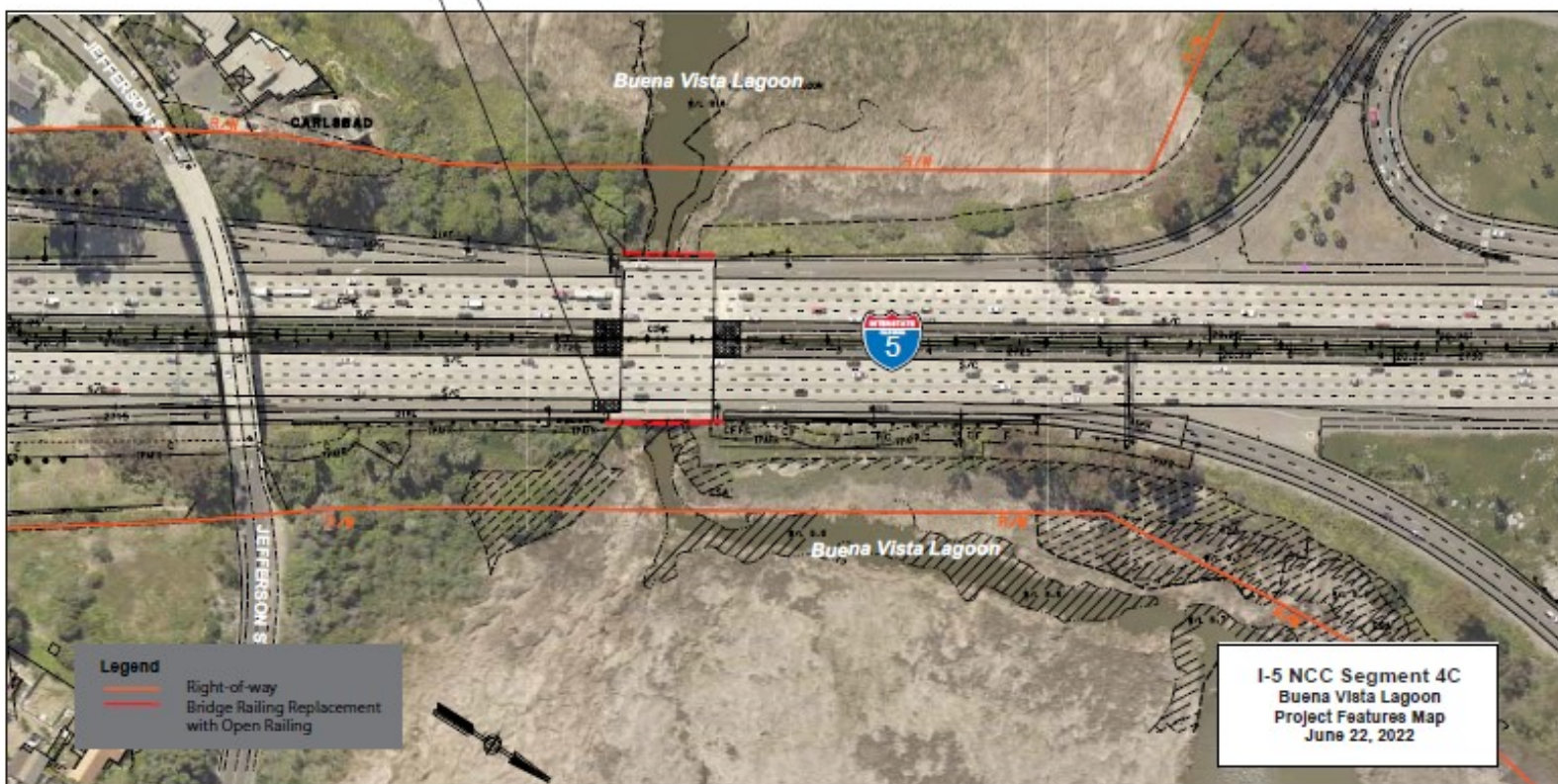


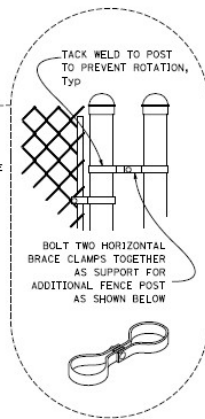
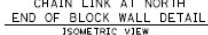
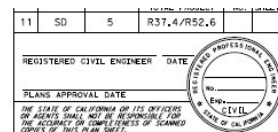
EXHIBIT NO. 6

APPLICATION NO.
NCC-NOID-0002-22
CDP-6-22-0578

Project Plans
Page 2 of 5



California Coastal Commission



LEGEND



PROPOSED FILLED CONTOURS



EXISTING CONTOURS

POINSETTIA SB INFIELDS FILLS.



EXHIBIT NO. 6

APPLICATION NO.
NCC-NOID-0002-22
CDP-6-22-0578

Project Plans
Page 4 of 5



California Coastal Commission

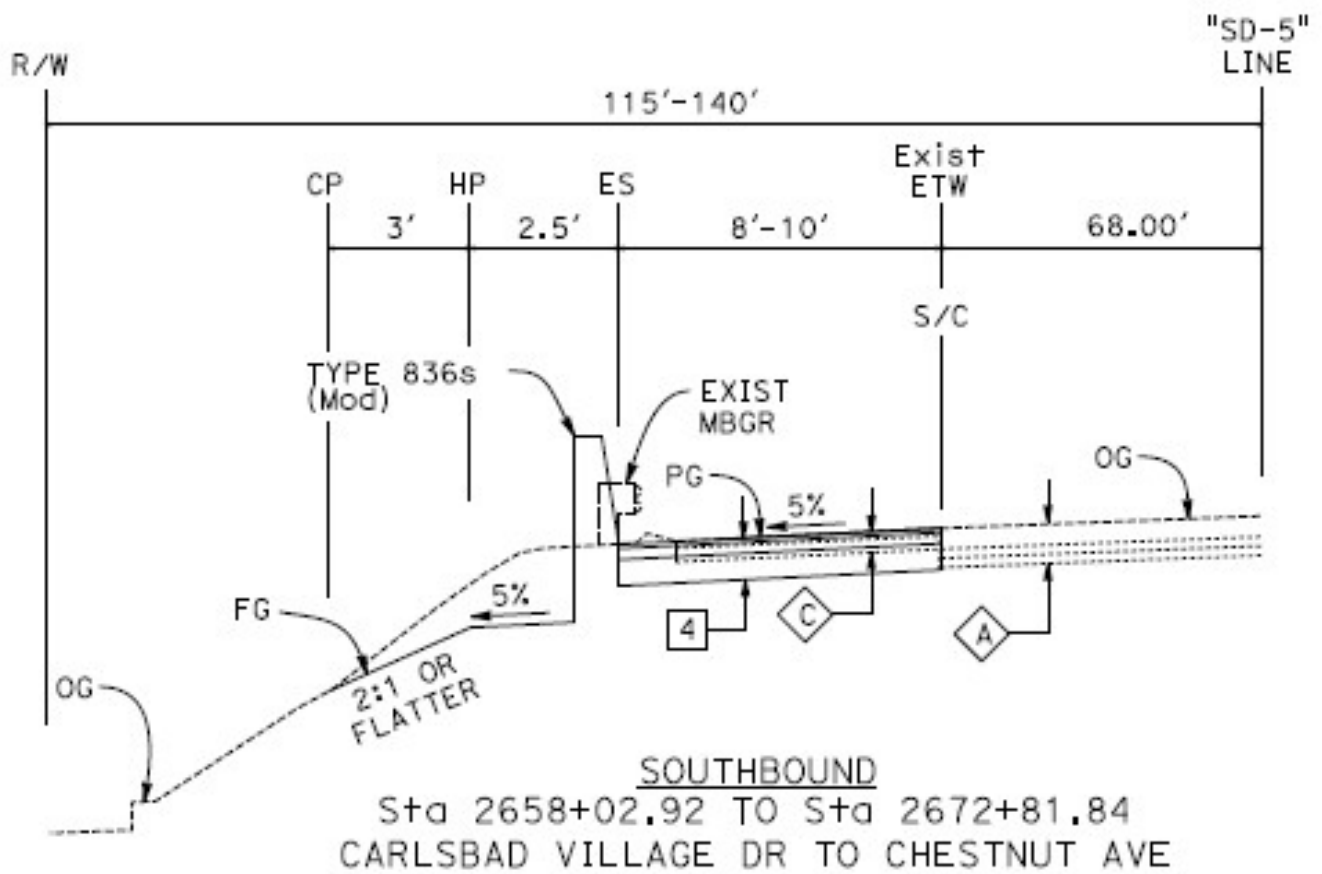


EXHIBIT NO. 6

APPLICATION NO.
NCC-NOID-0002-22
CDP-6-22-0578

Project Plans
Page 5 of 5



California Coastal Commission