

CALIFORNIA COASTAL COMMISSION

SAN DIEGO DISTRICT OFFICE
7575 METROPOLITAN DRIVE, SUITE 103
SAN DIEGO, CA 92108-4402
VOICE (619) 767-2370
FAX (619) 767-2384



W8b

6-21-0127 (San Diego Metropolitan Transit System)

September 7, 2022

EXHIBITS

Table of Contents

EXHIBIT 1: LOCATION MAP

EXHIBIT 2: SITE PLAN

EXHIBIT 3: SITE PHOTOGRAPHS

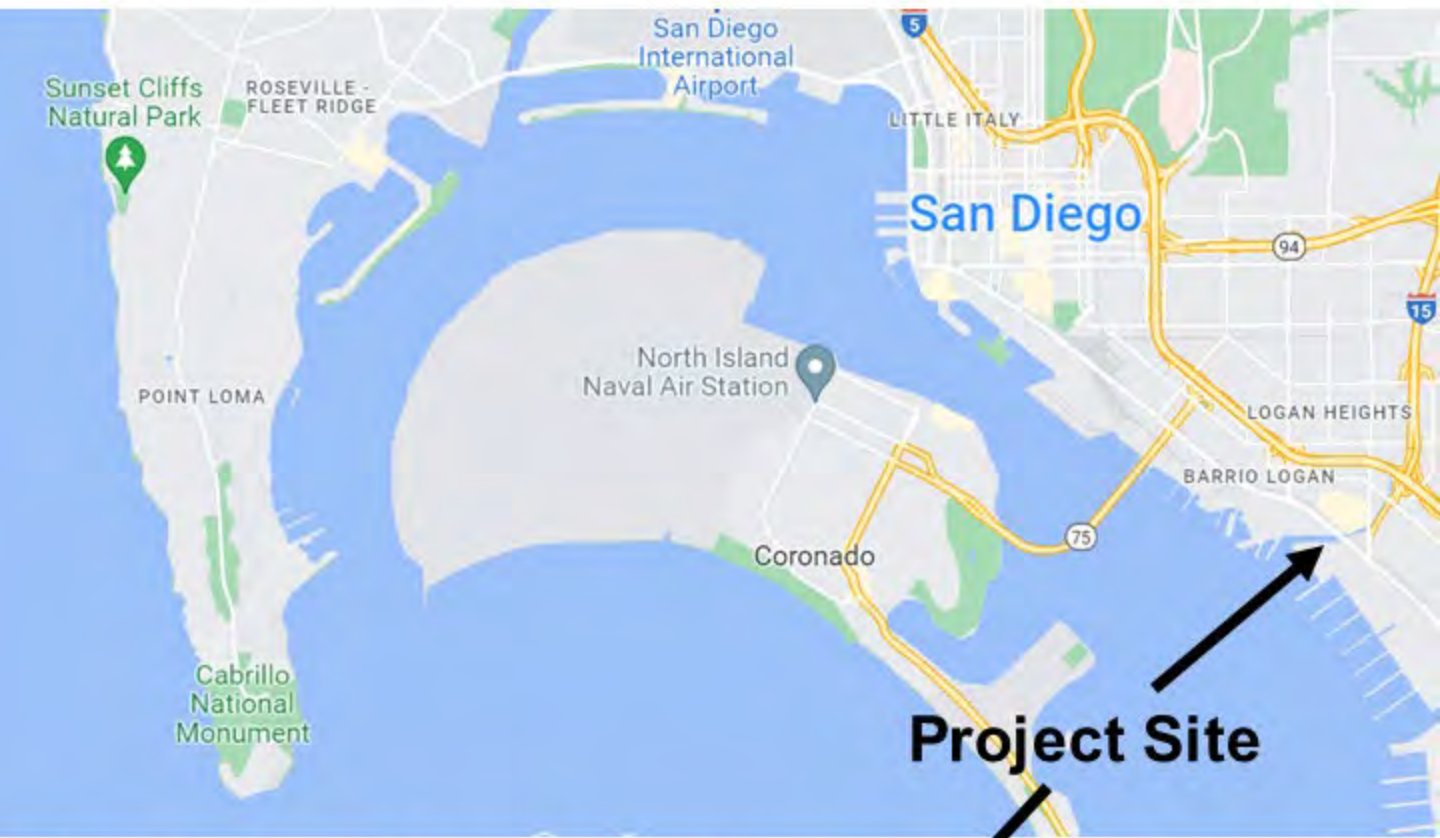


EXHIBIT NO. 1

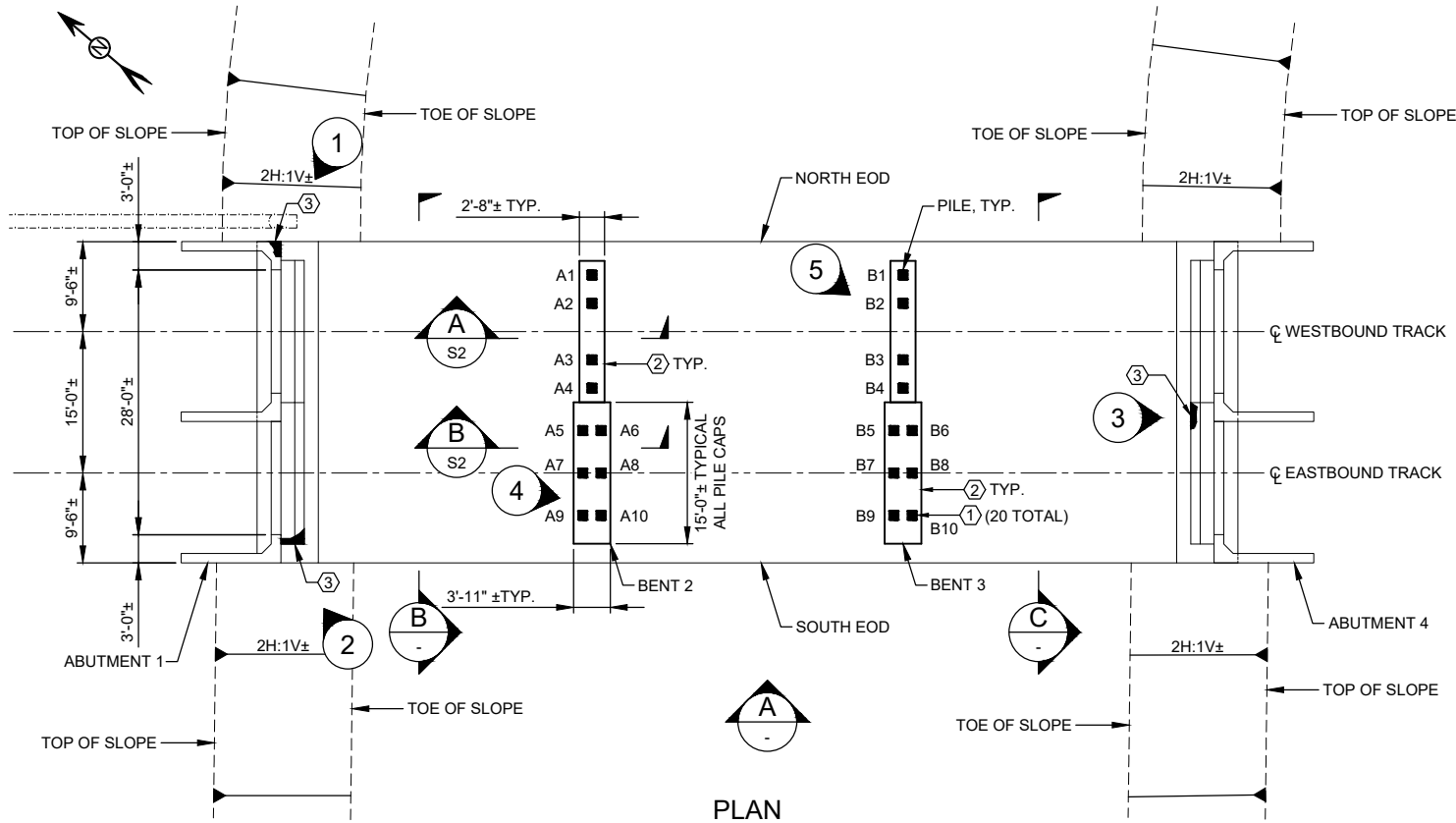
APPLICATION NO.
6-21-0127

Location

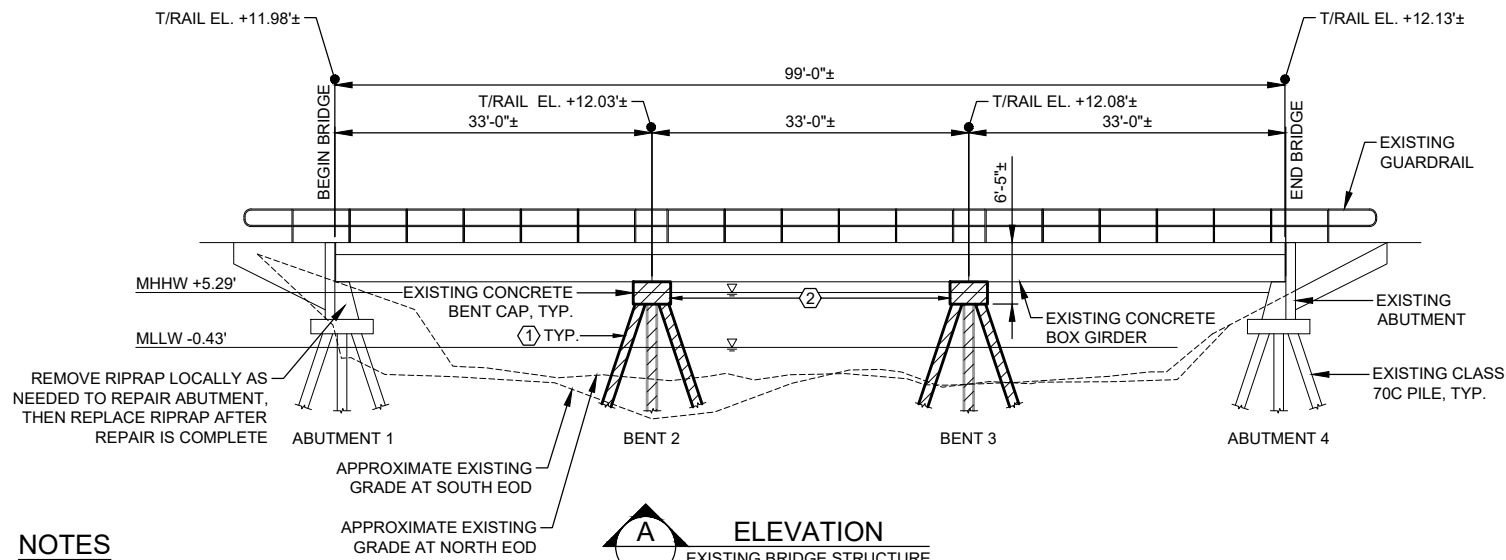


California Coastal Commission

MR68650
16:20
25-May-2021



PLAN
EXISTING BRIDGE STRUCTURE
(EXISTING GUARDRAIL NOT SHOWN)
0 10 20
SCALE IN FEET

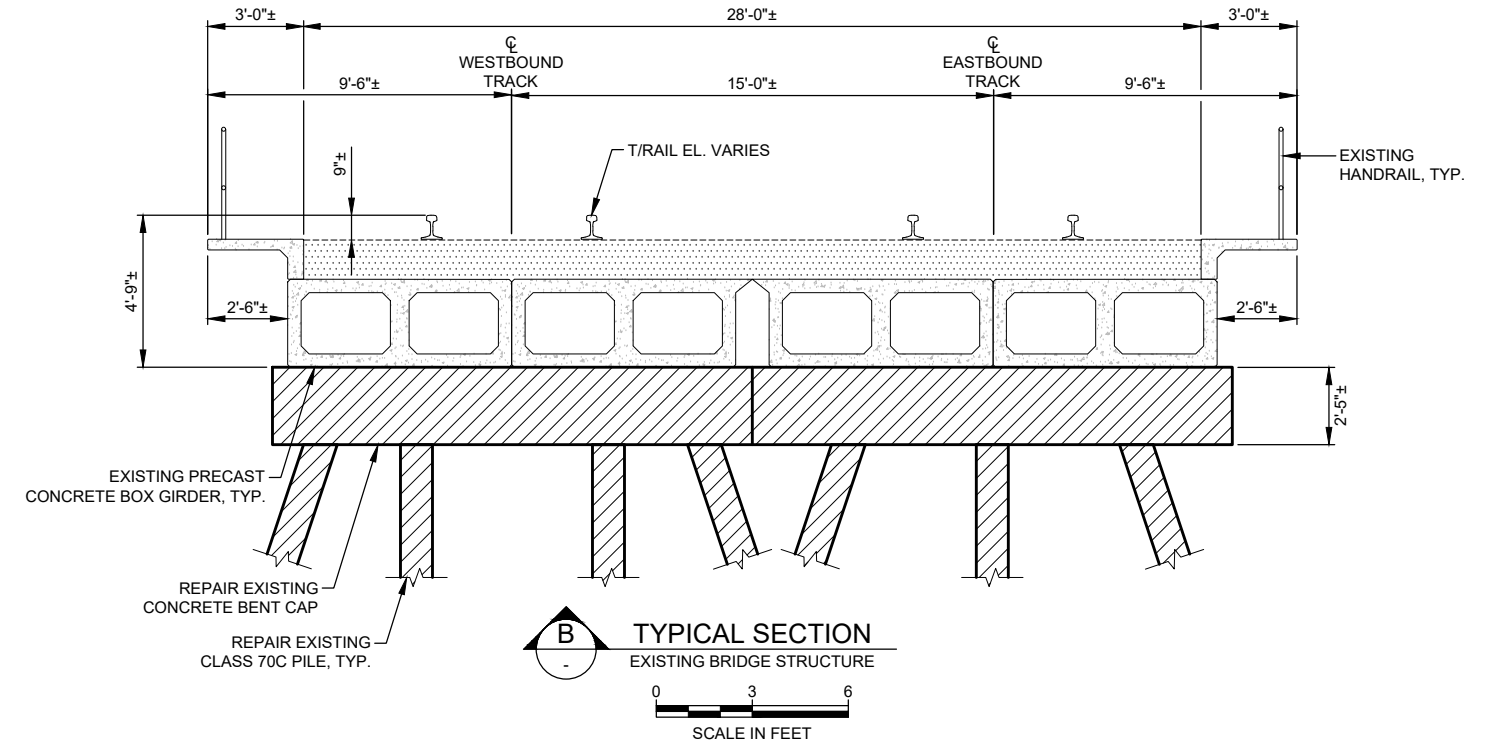


ELEVATION
EXISTING BRIDGE STRUCTURE
0 10 20
SCALE IN FEET

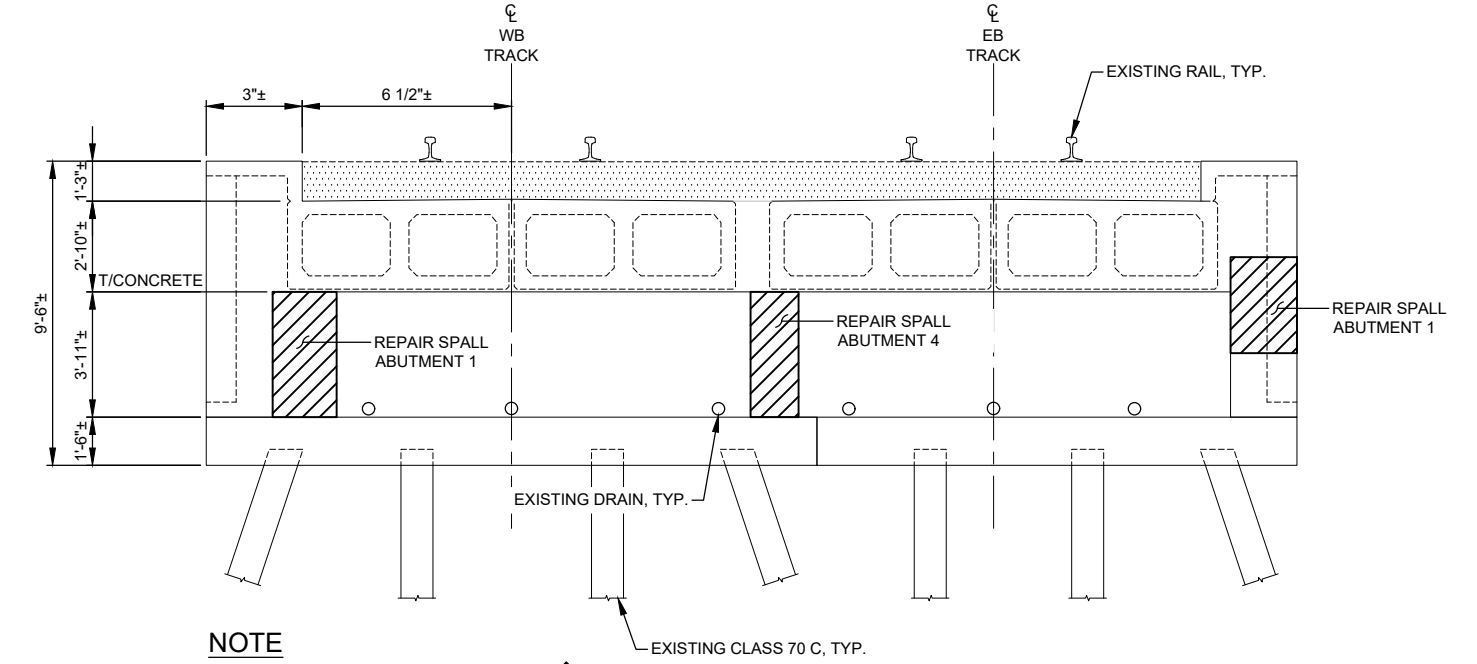
NOTES

- ① PILE JACKET, SEE SHEET S2
- ② BENT CAP REPAIR, SEE SHEET S2
- ③ ABUTMENT SPALL, SEE SHEET S1

WATER LEVEL DATA TAKEN FROM NOAA STATION 9410170 IN SAN DIEGO, CA



B TYPICAL SECTION
EXISTING BRIDGE STRUCTURE
0 3 6
SCALE IN FEET



C TYPICAL SECTION
EXISTING BRIDGE STRUCTURE
0 3 6
SCALE IN FEET

NOTE
EXISTING RIPRAP NOT SHOWN

No.	DATE	REVISION	BY	CHK	APRV
4	5/25/21	CONFORMED CONTRACT DOCUMENTS	TM	AR	ES
3	1/26/21	FOR BID	TM	AR	ES
2	12/14/20	100% SUBMITTAL FOR REVIEW	TM	AR	ES

MOTT MACDONALD
750 B Street, Suite 2880
San Diego, CA 92101
Tel: 619-881-0400

REGISTERED PROFESSIONAL ENGINEER
EVAN ALAN SHEESLEY
No. 3112
CALIFORNIA
5/25/21

DESIGNED BY P. YU
DRAWN BY T. MORRISON
CHECKED BY A. REZA
PRJ. ENG. E. SHEESLEY

DATE 5/25/21
5/25/21
5/25/21
5/25/21

RELATIVE BORDER SCALE IS IN INCHES
0 1 2



LAS CHOLLAS BRIDGE REPAIR
CONFORMED CONTRACT DOCUMENT

GENERAL PLAN AND
TYPICAL SECTIONS

EXHIBIT NO. 2

APPLICATION NO.
6-21-0127

Site Plan





PHOTO 1
DELAMINATION AT NORTHWEST WINGWALL AT ABUTMENT 1, LOOKING WEST



PHOTO 2
CLOSED CORROSION SPALLING AT SOUTHWEST CORNER AT ABUTMENT 1, LOOKING NORTH

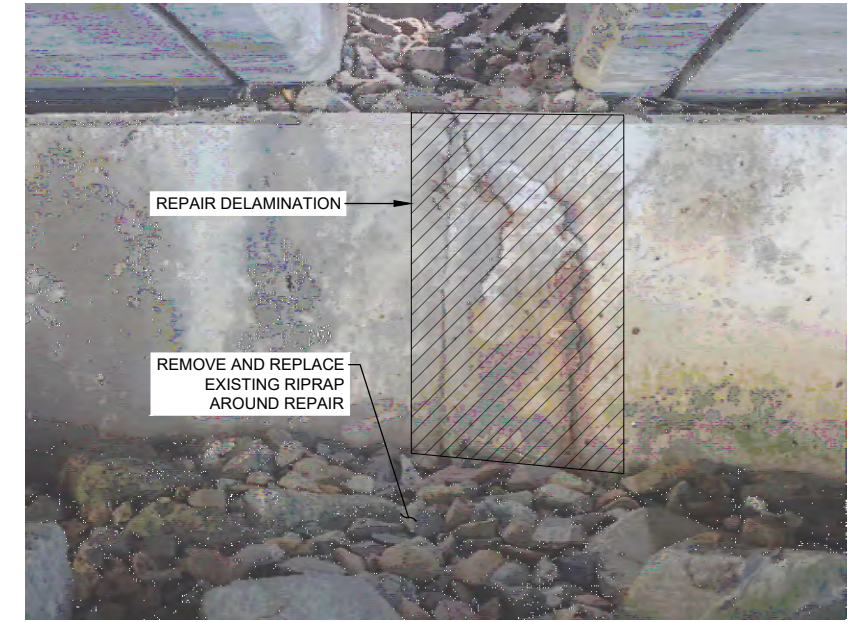


PHOTO 3
CLOSED CORROSION SPALLING AT THE CENTER OF ABUTMENT 4, LOOKING SOUTHEAST



PHOTO 4
OPEN CORROSION SPALLING AT THE TOP OF PILE A9, LOOKING SOUTHEAST

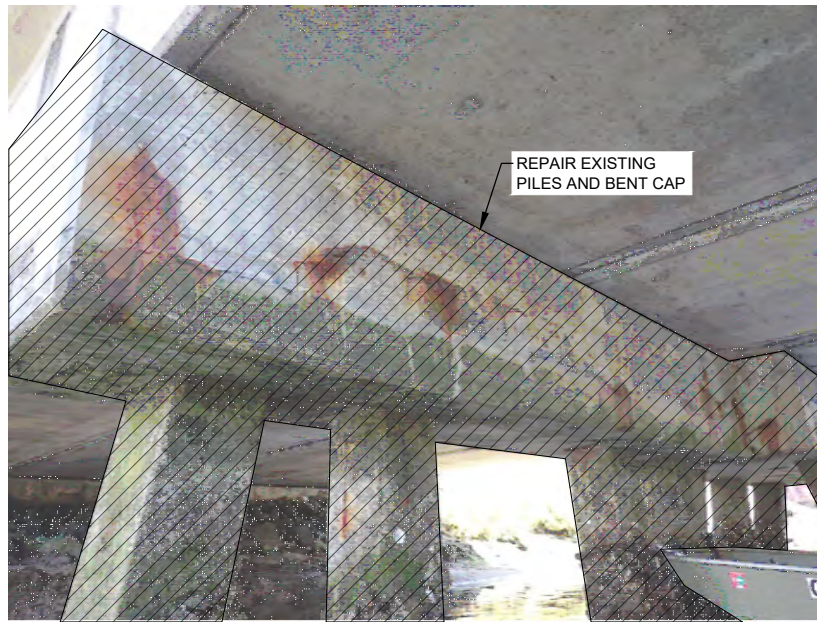


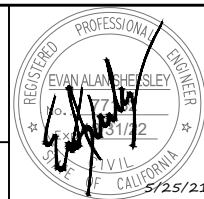
PHOTO 5
BENT 3 WESTBOUND PILE CAP, LOOKING SOUTH

4	5/25/21	CONFORMED CONTRACT DOCUMENTS	TM	AR	ES
3	1/26/21	FOR BID	TM	AR	ES
2	12/14/20	100% SUBMITTAL FOR REVIEW	TM	AR	ES
No.	DATE	REVISION	BY	CHK	APRV

M M
MOTT MACDONALD

750 B Street, Suite 2880
San Diego, CA 92101
Tel: 619-881-0400

RELATIVE BORDER SCALE
IS IN INCHES



DESIGNED BY P. YU	DATE 5/25/21
DRAWN BY T. MORRISON	5/25/21
CHECKED BY A. REZA	5/25/21
PRJ. ENG. E. SHEESLEY	5/25/21



LAS CHOLLAS BRIDGE REPAIR CONFORMED CONTRACT DOCUMENT
SITE PHOTOS

EXHIBIT NO. 3
APPLICATION NO.
6-21-0127
Site Photographs