

CALIFORNIA COASTAL COMMISSION

SOUTH CENTRAL COAST DISTRICT OFFICE
89 SOUTH CALIFORNIA STREET, SUITE 200
VENTURA, CA 93001-2801
VOICE (805) 585-1800
FAX (805) 641-1732



W13a

SANTA BARBARA COUNTY'S EXISTING CANNABIS REGULATIONS

DECEMBER 1, 2023

EXHIBITS

Table of Contents

EXHIBIT 1	2
EXHIBIT 2	3
EXHIBIT 3	4
EXHIBIT 4	5



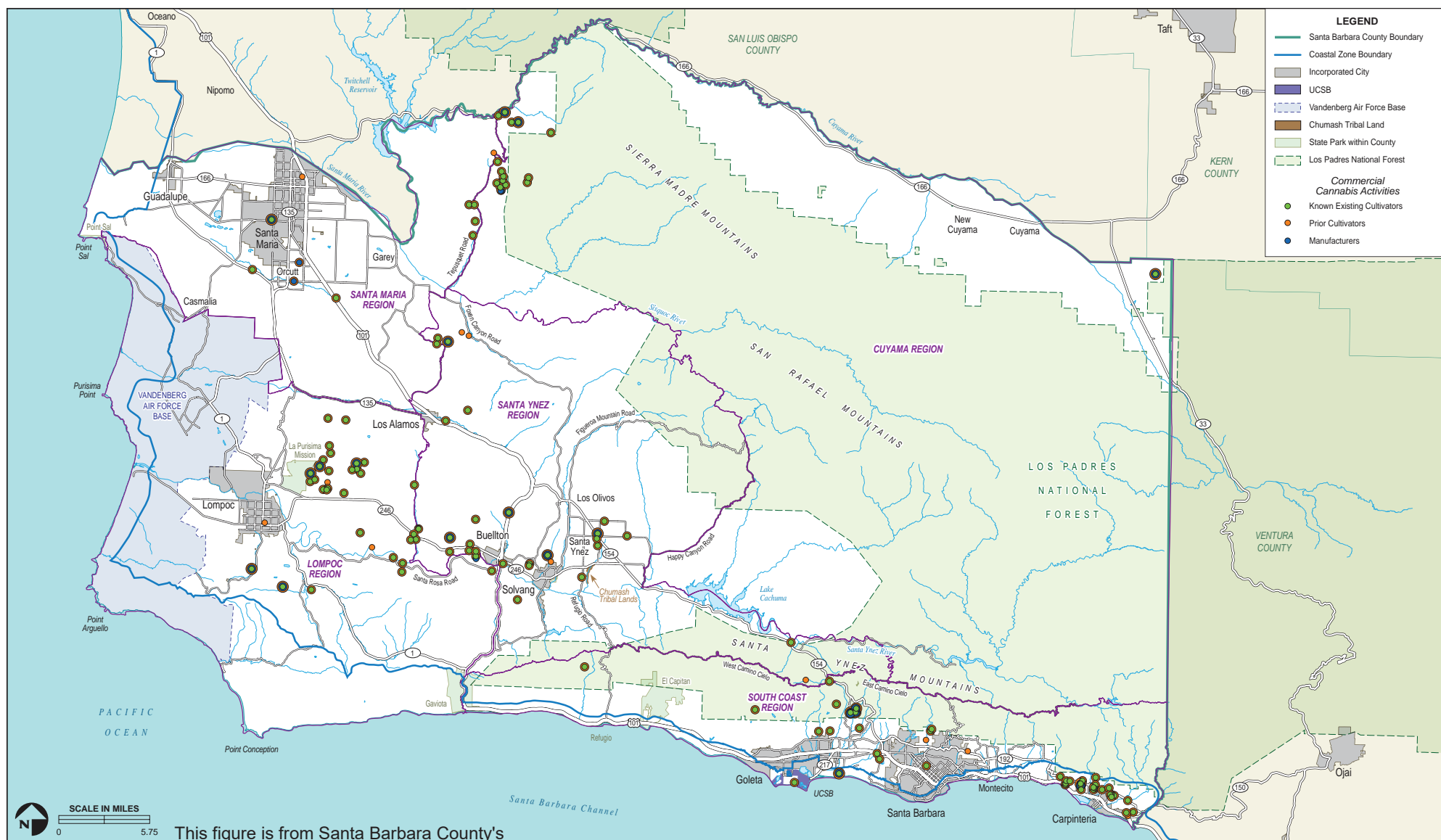
**Santa Barbara County
Agricultural Resources**

**FIGURE
3.2-1**

Exhibit 1



Exhibit 2



This figure is from Santa Barbara County's 2017 Final Environmental Impact Report for the Cannabis Land Use and Licensing Program and includes data collected in 2017.

Existing Setting of Cannabis Activities

FIGURE 2-2

Santa Barbara County Commercial Cannabis Activities

Coastal Zone							
Commercial Cannabis Activity	AG-I	AG-II	AG-I < or = 20 acres	EDRN**	Distances from Schools	Distances from Residential Zone	Urban/Rural Boundary
Outdoor	Permitted with a CDP	Permitted with a CDP; CUP* when on lot adjacent to an EDRN	Prohibited	Permitted with a CUP*	On AG-I lots, prohibited within 1,500 ft.	On AG-I lots, prohibited within 1,500 ft.	Prohibited within 2 miles
Mixed-Light (Greenhouse)	Permitted with a CDP	Permitted with a CDP	Permitted with a CDP	Permitted with a CUP*	Prohibited within 750 ft.	No standard	No standard
Indoor	Permitted with a CDP	Permitted with a CDP	Permitted with a CDP	Permitted with a CUP*	Prohibited within 750 ft.	No standard	No standard
Nursery	Permitted with a CDP	Permitted with a CDP	Permitted with a CDP	Permitted with a CUP*	Prohibited within 600 ft.	No standard	No standard
Processing	Permitted with a CDP when accessory to cultivation activities on the same lot	Permitted with a CDP when accessory to cultivation activities on the same lot	Permitted with a CDP when accessory to cultivation on the same lot	Permitted with a CUP* when accessory to cultivation on the same lot	Prohibited within 750 ft.	No standard	No standard
Microbusiness	Not allowed	Permitted with a CUP, only allows non-storefront retail	Not allowed	Permitted with a CUP* in commercial zone (C1), cultivation not allowed	Prohibited within 750 ft.	No standard	No standard
Retail	Not allowed	Non-storefront retail permitted with a CDP	Not allowed	Permitted with a CDP in commercial zone (C1), cultivation not allowed	Prohibited within 750 ft.	No standard	No standard

*A Conditional Use Permit (CUP) is required in addition to a CDP.

Santa Barbara County Commercial Cannabis Activities

Inland Areas							
Commercial Cannabis Activity	AG-I	AG-II	AG-I < or = 20 acres	EDRN**	Distances from Schools	Distances from Residential Zone	Urban/Rural Boundary
Outdoor	Permitted with a CUP	Permitted with a CUP	Prohibited	Prohibited	On AG-I lots, prohibited within 1,500 ft.	On AG-I lots, prohibited within 1,500 ft.	No standard that prohibits within a certain distance
Mixed-Light (Greenhouse)	Permitted with a CUP	Permitted with a CUP	Prohibited	Prohibited	Prohibited within 750 ft.	No standard	No standard
Indoor	Permitted with a CUP	Permitted with a CUP	Prohibited	Prohibited	Prohibited within 750 ft.	No standard	No standard
Nursery	Permitted with a CUP	Permitted with a CUP	Prohibited	Prohibited	Prohibited within 600 ft.	No standard	No standard
Processing	Permitted with a CUP when no cultivation is on site	Permitted with a CUP when no cultivation is on site	Prohibited	Prohibited	Prohibited within 750 ft.	No standard	No standard
Microbusiness	Not allowed	Non-storefront retail permitted with a CUP	Prohibited	Prohibited	Prohibited within 750 ft.	No standard	No standard
Retail	Not allowed	Not allowed	Prohibited	Prohibited	Prohibited within 750 ft.	No standard	No standard

**An EDRN is an existing developed rural neighborhood, which are mapped and generally defined as a neighborhood area that has been developed historically with lots smaller than those found in the surrounding Rural lands, and the purpose of the neighborhood boundary is to keep pockets of rural residential development from expanding onto adjacent agricultural lands.