

CALIFORNIA COASTAL COMMISSION
SOUTH CENTRAL COAST DISTRICT OFFICE
89 S. CALIFORNIA STREET, SUITE 200
VENTURA, CA 93001
PHONE (805) 585-1800



W15a

4-23-0215 (City of Goleta)
November 30, 2023

EXHIBITS

Table of Contents

Exhibit 1 – Vicinity Map.....2

Exhibit 2 – Project Area.....3

Exhibit 3 – Monarch Butterfly Aggregation Sites4

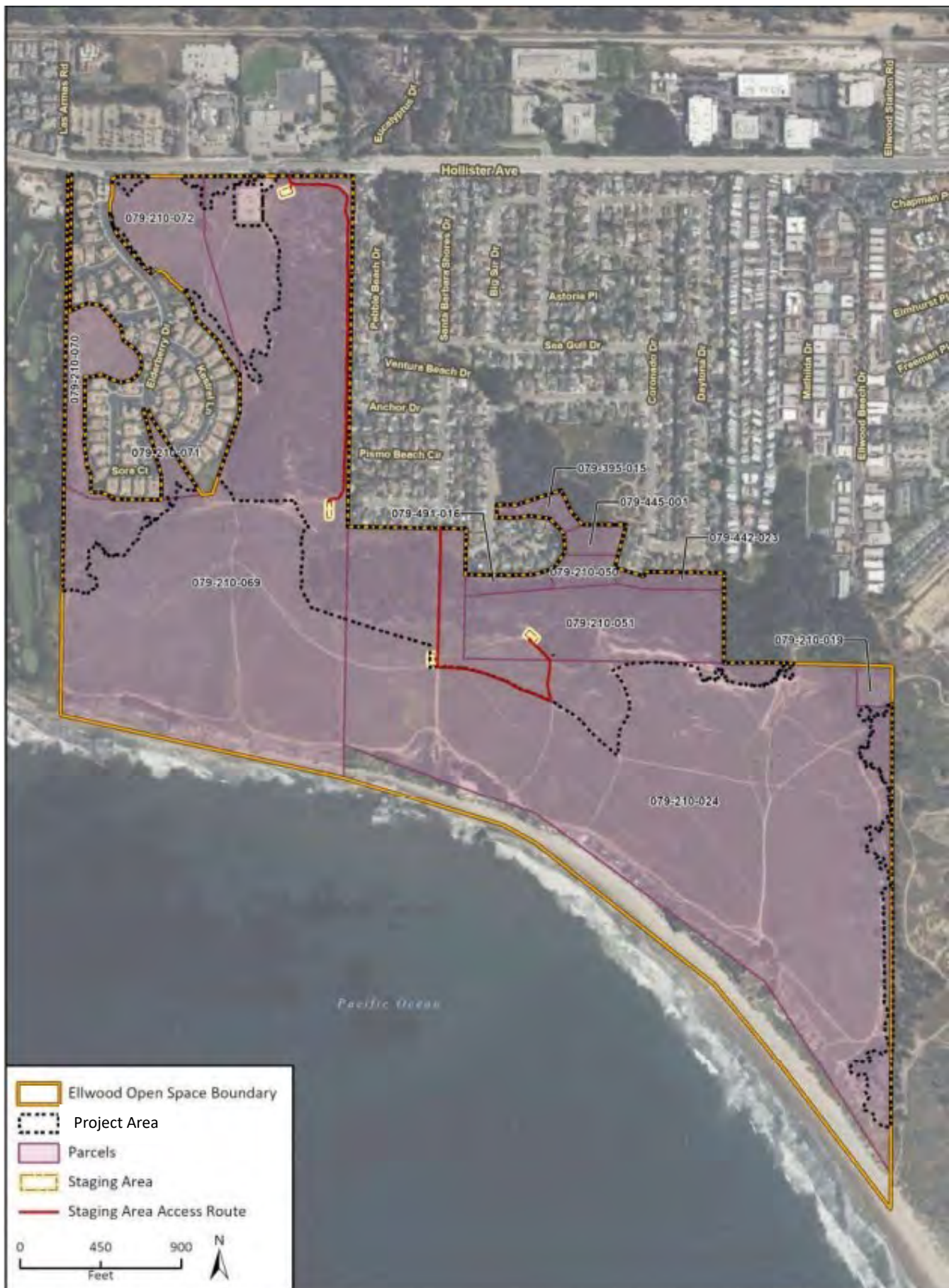
**Exhibit 4 – Community Wildfire Protection Plan Fuel
Reduction/Treatment Types Matrix5**

**Exhibit 5 – Community Wildfire Protection Plan Fuel
Reduction/Treatment Types Figures.....30**



Ellwood Mesa Open Space

**Exhibit 1:
4-23-0215
Vicinity Map**



Imagery provided by Microsoft Bing and its licensors © 2023.
Additional Data from County of Santa Barbara, 2022.

**Exhibit 2:
4-23-0215
Project Area**



Community Wildfire Protection Plan Zones

- Primary Defense Zone (A, 0-30 Feet)
- Fuel Reduction Zone (B, 30-100 Feet)
- Fuel Reduction Zone (C, 100-150 Feet)

Monarch Butterfly Aggregation Sites

- Butterfly Aggregation Area and 300-Foot Buffer Managed per CWPP Table 14
- Monarch Butterfly Habitat Management Plan (MBHMP) Coverage Area
- Ellwood Mesa Sperling Preserve Open Space

0 500 1,000 Feet

Fuel Reduction/Treatment Types

Treatment Type	Summary
Unmodified Standard	<p>Within 100 feet of structures:</p> <p>Mow grasses</p> <p>Clear flammable materials from the ground</p> <p>Reduce brush/scrub height to 2 feet</p> <p>Trim and thin unhealthy trees</p> <p>Reduce fuel ladders by pruning lower branches 6 ft up, or lower 1/3 of tree height on smaller trees</p>
Modified Standard	<p>Within 100 feet of structures:</p> <p>Modify the standard treatment to be less removal, based on site specific conditions</p>
Unmodified Aggregation	<p>Within 100 feet of monarch aggregation sites:</p> <p>Mow grasses</p> <p>Clear flammable materials from the ground</p> <p>Reduce brush/scrub height to 3 feet</p> <p>Trim and thin unhealthy trees</p> <p>Reduce fuel ladders and intermittent patches of shrubs and small trees in openings</p>
Modified Aggregation	<p>Within 100 feet of aggregation sites:</p> <p>Modify the aggregation treatment to be less removal, based on site specific conditions</p>

CWPP Treatment Zones

Grid Number	Zone	Treatment ¹	Square Feet	Public Notes
0A	Zone 0	Modified Standard	2,497	<p>Modification is to trim or remove eucalyptus within 10 feet of existing path to create access.</p> <p>Trim canopies by hand.</p> <p>Retain eucalyptus stump for wildlife.</p>
0B	Zone 0	Modified Standard	2,016	<p>Modification is to trim or remove eucalyptus within 10 feet of existing path to create access.</p> <p>Trim canopies by hand.</p> <p>Remove vegetation overhanging structures.</p>
0C	Zone 0	Modified Standard	2,026	<p>Modification is to trim or remove eucalyptus within 10 feet of existing path to create access.</p> <p>Trim canopies by hand.</p>
0D	Zone 0	Modified Standard	2,035	<p>Modification is to trim or remove eucalyptus within 10 feet of existing path to create access.</p> <p>Trim canopies by hand.</p>

Grid Number	Zone	Treatment ¹	Square Feet	Public Notes
0E	Zone 0	Modified Standard	2,045	Modification is to trim or remove eucalyptus within 10 feet of existing path to create access. Trim canopies by hand.
0F	Zone 0	Modified Standard	2,054	Modification is to trim or remove eucalyptus within 10 feet of existing path to create access. Trim canopies by hand.
0G	Zone 0	Modified Standard	2,063	Modification is to trim or remove eucalyptus within 10 feet of existing path to create access. Trim canopies by hand.
1A	Zone 0/Zone 1	Modified Standard/ Unmodified Standard	6,291	Zone 0: Modification is to trim or remove eucalyptus within 10 feet of existing path to create access. Zone 1: Within 100 feet of structures: Mow grasses Clear flammable materials from the ground Reduce brush/scrub height to 2 feet Trim and thin unhealthy trees Reduce fuel ladders by pruning lower branches 6 ft up, or lower 1/3 of tree height on smaller trees
1B	Zone 1	Unmodified Standard	7,881	Within 100 feet of structures: Mow grasses Clear flammable materials from the ground Reduce brush/scrub height to 2 feet Trim and thin unhealthy trees Reduce fuel ladders by pruning lower branches 6 ft up, or lower 1/3 of tree height on smaller trees
1C	Zone 1	Unmodified Standard	8,012	Within 100 feet of structures: Mow grasses Clear flammable materials from the ground Reduce brush/scrub height to 2 feet Trim and thin unhealthy trees Reduce fuel ladders by pruning lower branches 6 ft up, or lower 1/3 of tree height on smaller trees

Grid Number	Zone	Treatment ¹	Square Feet	Public Notes
1D	Zone 1	Unmodified Standard	9,966	<p>Within 100 feet of structures:</p> <p>Mow grasses</p> <p>Clear flammable materials from the ground</p> <p>Reduce brush/scrub height to 2 feet</p> <p>Trim and thin unhealthy trees</p> <p>Reduce fuel ladders by pruning lower branches 6 ft up, or lower 1/3 of tree height on smaller trees</p>
1E	Zone 1	Unmodified Standard	10,000	<p>Within 100 feet of structures:</p> <p>Mow grasses</p> <p>Clear flammable materials from the ground</p> <p>Reduce brush/scrub height to 2 feet</p> <p>Trim and thin unhealthy trees</p> <p>Reduce fuel ladders by pruning lower branches 6 ft up, or lower 1/3 of tree height on smaller trees</p>
1F	Zone 1	Unmodified Standard	10,000	<p>Within 100 feet of structures:</p> <p>Mow grasses</p> <p>Clear flammable materials from the ground</p> <p>Reduce brush/scrub height to 2 feet</p> <p>Trim and thin unhealthy trees</p> <p>Reduce fuel ladders by pruning lower branches 6 ft up, or lower 1/3 of tree height on smaller trees</p>
1G	Zone 1/ Zone 2	Unmodified Standard/ Unmodified Standard	9,964	<p>Zone 1 and 2:</p> <p>Within 100 feet of structures:</p> <p>Mow grasses</p> <p>Clear flammable materials from the ground</p> <p>Reduce brush/scrub height to 2 feet</p> <p>Trim and thin unhealthy trees</p> <p>Reduce fuel ladders by pruning lower branches 6 ft up, or lower 1/3 of tree height on smaller trees</p>

City of Goleta
Ellwood Mesa Open Space Fuel Reduction – Waiver de Minimis

Grid Number	Zone	Treatment ¹	Square Feet	Public Notes
1H	Zone 1	Unmodified Standard	5,646	Within 100 feet of structures: Mow grasses Clear flammable materials from the ground Reduce brush/scrub height to 2 feet Trim and thin unhealthy trees Reduce fuel ladders by pruning lower branches 6 ft up, or lower 1/3 of tree height on smaller trees
1I	Zone 1	Unmodified Standard	9,988	Within 100 feet of structures: Mow grasses Clear flammable materials from the ground Reduce brush/scrub height to 2 feet Trim and thin unhealthy trees Reduce fuel ladders by pruning lower branches 6 ft up, or lower 1/3 of tree height on smaller trees
1J	Zone 1	Unmodified Standard	10,000	Within 100 feet of structures: Mow grasses Clear flammable materials from the ground Reduce brush/scrub height to 2 feet Trim and thin unhealthy trees Reduce fuel ladders by pruning lower branches 6 ft up, or lower 1/3 of tree height on smaller trees
1K	Zone 1	Unmodified Standard	9,767	Within 100 feet of structures: Mow grasses Clear flammable materials from the ground Reduce brush/scrub height to 2 feet Trim and thin unhealthy trees Reduce fuel ladders by pruning lower branches 6 ft up, or lower 1/3 of tree height on smaller trees

Grid Number	Zone	Treatment ¹	Square Feet	Public Notes
1L	Zone 1	Unmodified Standard	818	Within 100 feet of structures: Mow grasses Clear flammable materials from the ground Reduce brush/scrub height to 2 feet Trim and thin unhealthy trees Reduce fuel ladders by pruning lower branches 6 ft up, or lower 1/3 of tree height on smaller trees
1M	Zone 1	Unmodified Standard	3,030	Within 100 feet of structures: Mow grasses Clear flammable materials from the ground Reduce brush/scrub height to 2 feet Trim and thin unhealthy trees Reduce fuel ladders by pruning lower branches 6 ft up, or lower 1/3 of tree height on smaller trees
1N	Zone 1	Unmodified Standard	8,733	Within 100 feet of structures: Mow grasses Clear flammable materials from the ground Reduce brush/scrub height to 2 feet Trim and thin unhealthy trees Reduce fuel ladders by pruning lower branches 6 ft up, or lower 1/3 of tree height on smaller trees
1O	Zone 1	Unmodified Standard	10,000	Within 100 feet of structures: Mow grasses Clear flammable materials from the ground Reduce brush/scrub height to 2 feet Trim and thin unhealthy trees Reduce fuel ladders by pruning lower branches 6 ft up, or lower 1/3 of tree height on smaller trees

City of Goleta
Ellwood Mesa Open Space Fuel Reduction – Waiver de Minimis

Grid Number	Zone	Treatment ¹	Square Feet	Public Notes
1P	Zone 1	Unmodified Standard	2,687	Within 100 feet of structures: Mow grasses Clear flammable materials from the ground Reduce brush/scrub height to 2 feet Trim and thin unhealthy trees Reduce fuel ladders by pruning lower branches 6 ft up, or lower 1/3 of tree height on smaller trees
1Q	Zone 1	Unmodified Standard	1,238	Within 100 feet of structures: Mow grasses Clear flammable materials from the ground Reduce brush/scrub height to 2 feet Trim and thin unhealthy trees Reduce fuel ladders by pruning lower branches 6 ft up, or lower 1/3 of tree height on smaller trees
1R	Zone 1	Unmodified Standard	3,680	Within 100 feet of structures: Mow grasses Clear flammable materials from the ground Reduce brush/scrub height to 2 feet Trim and thin unhealthy trees Reduce fuel ladders by pruning lower branches 6 ft up, or lower 1/3 of tree height on smaller trees
2A	Zone 1/ Zone 2	Unmodified Standard/ Unmodified Standard	8,144	Zone 1 and 2: Within 100 feet of structures: Mow grasses Clear flammable materials from the ground Reduce brush/scrub height to 2 feet Trim and thin unhealthy trees Reduce fuel ladders by pruning lower branches 6 ft up, or lower 1/3 of tree height on smaller trees

Grid Number	Zone	Treatment ¹	Square Feet	Public Notes
2B	Zone 2	Unmodified Standard	8,275	<p>Within 100 feet of structures:</p> <p>Mow grasses</p> <p>Clear flammable materials from the ground</p> <p>Reduce brush/scrub height to 2 feet</p> <p>Trim and thin unhealthy trees</p> <p>Reduce fuel ladders by pruning lower branches 6 ft up, or lower 1/3 of tree height on smaller trees</p>
2C	Zone 2	Unmodified Standard	2,937	<p>Within 100 feet of structures:</p> <p>Mow grasses</p> <p>Clear flammable materials from the ground</p> <p>Reduce brush/scrub height to 2 feet</p> <p>Trim and thin unhealthy trees</p> <p>Reduce fuel ladders by pruning lower branches 6 ft up, or lower 1/3 of tree height on smaller trees</p>
2D	Zone 2	Unmodified Standard	8,406	<p>Within 100 feet of structures:</p> <p>Mow grasses</p> <p>Clear flammable materials from the ground</p> <p>Reduce brush/scrub height to 2 feet</p> <p>Trim and thin unhealthy trees</p> <p>Reduce fuel ladders by pruning lower branches 6 ft up, or lower 1/3 of tree height on smaller trees</p>
2E	Zone 2	Unmodified Standard	2,618	<p>Within 100 feet of structures:</p> <p>Mow grasses</p> <p>Clear flammable materials from the ground</p> <p>Reduce brush/scrub height to 2 feet</p> <p>Trim and thin unhealthy trees</p> <p>Reduce fuel ladders by pruning lower branches 6 ft up, or lower 1/3 of tree height on smaller trees</p>

City of Goleta
Ellwood Mesa Open Space Fuel Reduction – Waiver de Minimis

Grid Number	Zone	Treatment ¹	Square Feet	Public Notes
2F	Zone 2	Unmodified Standard	8,538	Within 100 feet of structures: Mow grasses Clear flammable materials from the ground Reduce brush/scrub height to 2 feet Trim and thin unhealthy trees Reduce fuel ladders by pruning lower branches 6 ft up, or lower 1/3 of tree height on smaller trees
2G	Zone 2	Unmodified Standard	2,524	Within 100 feet of structures: Mow grasses Clear flammable materials from the ground Reduce brush/scrub height to 2 feet Trim and thin unhealthy trees Reduce fuel ladders by pruning lower branches 6 ft up, or lower 1/3 of tree height on smaller trees
2H	Zone 2	Unmodified Standard	8,669	Within 100 feet of structures: Mow grasses Clear flammable materials from the ground Reduce brush/scrub height to 2 feet Trim and thin unhealthy trees Reduce fuel ladders by pruning lower branches 6 ft up, or lower 1/3 of tree height on smaller trees
2I	Zone 2	Unmodified Standard	2,628	Within 100 feet of structures: Mow grasses Clear flammable materials from the ground Reduce brush/scrub height to 2 feet Trim and thin unhealthy trees Reduce fuel ladders by pruning lower branches 6 ft up, or lower 1/3 of tree height on smaller trees

Grid Number	Zone	Treatment ¹	Square Feet	Public Notes
2J	Zone 2	Unmodified Standard	8,800	<p>Within 100 feet of structures:</p> <p>Mow grasses</p> <p>Clear flammable materials from the ground</p> <p>Reduce brush/scrub height to 2 feet</p> <p>Trim and thin unhealthy trees</p> <p>Reduce fuel ladders by pruning lower branches 6 ft up, or lower 1/3 of tree height on smaller trees</p>
2K	Zone 2	Unmodified Standard	3,321	<p>Within 100 feet of structures:</p> <p>Mow grasses</p> <p>Clear flammable materials from the ground</p> <p>Reduce brush/scrub height to 2 feet</p> <p>Trim and thin unhealthy trees</p> <p>Reduce fuel ladders by pruning lower branches 6 ft up, or lower 1/3 of tree height on smaller trees</p>
2L	Zone 2	Unmodified Standard	8,931	<p>Within 100 feet of structures:</p> <p>Mow grasses</p> <p>Clear flammable materials from the ground</p> <p>Reduce brush/scrub height to 2 feet</p> <p>Trim and thin unhealthy trees</p> <p>Reduce fuel ladders by pruning lower branches 6 ft up, or lower 1/3 of tree height on smaller trees</p>
2M	Zone 2	Unmodified Standard	5,646	<p>Within 100 feet of structures:</p> <p>Mow grasses</p> <p>Clear flammable materials from the ground</p> <p>Reduce brush/scrub height to 2 feet</p> <p>Trim and thin unhealthy trees</p> <p>Reduce fuel ladders by pruning lower branches 6 ft up, or lower 1/3 of tree height on smaller trees</p>

City of Goleta
Ellwood Mesa Open Space Fuel Reduction – Waiver de Minimis

Grid Number	Zone	Treatment ¹	Square Feet	Public Notes
2N	Zone 2	Unmodified Standard	9,072	Within 100 feet of structures: Mow grasses Clear flammable materials from the ground Reduce brush/scrub height to 2 feet Trim and thin unhealthy trees Reduce fuel ladders by pruning lower branches 6 ft up, or lower 1/3 of tree height on smaller trees
2O	Zone 2	Unmodified Standard	6,969	Within 100 feet of structures: Mow grasses Clear flammable materials from the ground Reduce brush/scrub height to 2 feet Trim and thin unhealthy trees Reduce fuel ladders by pruning lower branches 6 ft up, or lower 1/3 of tree height on smaller trees
3A	Zone 3	Modified Standard	618	Within 100 feet of structures: Mow grasses Clear flammable dead materials from the ground Reduce brush/scrub height to 4 feet Trim and thin unhealthy trees Reduce fuel ladders by pruning lower branches 6 ft up, or lower 1/3 of tree height on smaller trees
3B	Zone 3	Modified Standard	3,764	Within 100 feet of structures: Mow grasses Clear flammable dead materials from the ground Reduce brush/scrub height to 4 feet Trim and thin unhealthy trees Reduce fuel ladders by pruning lower branches 6 ft up, or lower 1/3 of tree height on smaller trees

Grid Number	Zone	Treatment ¹	Square Feet	Public Notes
3C	Zone 3	Modified Standard	4,741	<p>Within 100 feet of structures:</p> <p>Mow grasses</p> <p>Clear flammable dead materials from the ground</p> <p>Reduce brush/scrub height to 4 feet</p> <p>Trim and thin unhealthy trees</p> <p>Reduce fuel ladders by pruning lower branches 6 ft up, or lower 1/3 of tree height on smaller trees</p>
3D	Zone 3	Modified Standard	7,311	<p>Within 100 feet of structures:</p> <p>Mow grasses</p> <p>Clear flammable dead materials from the ground</p> <p>Reduce brush/scrub height to 4 feet</p> <p>Trim and thin unhealthy trees</p> <p>Reduce fuel ladders by pruning lower branches 6 ft up, or lower 1/3 of tree height on smaller trees</p>
3E	Zone 3	Modified Standard	6,917	<p>Within 100 feet of structures:</p> <p>Mow grasses</p> <p>Clear flammable dead materials from the ground</p> <p>Reduce brush/scrub height to 4 feet</p> <p>Trim and thin unhealthy trees</p> <p>Reduce fuel ladders by pruning lower branches 6 ft up, or lower 1/3 of tree height on smaller trees</p>
4A	Zone 4	Unmodified Standard	5,618	<p>Zone 4:</p> <p>Within 100 feet of structures:</p> <p>Mow grasses</p> <p>Clear flammable dead materials from the ground</p> <p>Reduce brush/scrub height to 2 feet</p> <p>Trim and thin unhealthy trees</p> <p>Reduce fuel ladders by pruning lower branches 6 ft up, or lower 1/3 of tree height on smaller trees</p>

City of Goleta
Ellwood Mesa Open Space Fuel Reduction – Waiver de Minimis

Grid Number	Zone	Treatment ¹	Square Feet	Public Notes
4B	Zone 4/ Zone 5	Unmodified Standard/ Modified Standard	5,314	<p>Zone 4:</p> <p>Within 100 feet of structures:</p> <p>Mow grasses</p> <p>Clear flammable materials from the ground</p> <p>Reduce brush/scrub height to 2 feet</p> <p>Trim and thin unhealthy trees</p> <p>Reduce fuel ladders by pruning lower branches 6 ft up, or lower 1/3 of tree height on smaller trees</p> <p>Zone 5: Modification is no thinning of riparian trees.</p>
5A	Zone 5	Modified Standard	6967	Modification is no thinning of riparian trees.
5B	Zone 5	Modified Standard	4,930	Modification is no thinning of riparian trees
5C	Zone 5	Modified Standard	5,003	Modification is no thinning of riparian trees
5D	Zone 5	Modified Standard	9,467	Modification is no thinning of riparian trees
5E	Zone 5	Modified Standard	1,767	Modification is no thinning of riparian trees
5F	Zone 5	Modified Standard	1,192	Modification is no thinning of riparian trees
5G	Zone 5	Modified Standard	4,208	Modification is no thinning of riparian trees
5H	Zone 5	Modified Standard	7,450	Modification is no thinning of riparian trees
5I	Zone 5	Modified Standard	7,302	Modification is no thinning of riparian trees
5J	Zone 5	Modified Standard	441	Modification is no thinning of riparian trees
5K	Zone 5	Modified Standard	1,450	Modification is no thinning of riparian trees
5L	Zone 5	Modified Standard	2,669	Modification is no thinning of riparian trees
5M	Zone 5	Modified Standard	410	Modification is no thinning of riparian trees
6A	Zone 6	Modified Standard	1,183	Modification is no thinning in riparian vegetation
6B	Zone 6	Modified Standard	4,976	Modification is no thinning in riparian vegetation
6C	Zone 6	Modified Standard	6,793	Modification is no thinning in riparian vegetation
6D	Zone 6	Modified Standard	7,024	Modification is no thinning in riparian vegetation
6E	Zone 6	Modified Standard	6,257	Modification is no thinning in riparian vegetation
6F	Zone 6	Modified Standard	5,797	Modification is no thinning in riparian vegetation

Grid Number	Zone	Treatment ¹	Square Feet	Public Notes
6G	Zone 6	Modified Standard	2,817	Modification is no thinning in riparian vegetation
6H	Zone 6	Modified Standard	4,238	Modification is no thinning in riparian vegetation
6I	Zone 6	Modified Standard	6,843	Modification is no thinning in riparian vegetation
6J	Zone 6	Modified Standard	986	Modification is no thinning in riparian vegetation
6K	Zone 6	Modified Standard	933	Modification is no thinning in riparian vegetation
6L	Zone 6	Modified Standard	6,483	Modification is no thinning in riparian vegetation
6M	Zone 6	Modified Standard	430	Modification is no thinning in riparian vegetation
6N	Zone 6	Modified Standard	2,185	Modification is no thinning in riparian vegetation
6O	Zone 6	Modified Standard	5,156	Modification is no thinning in riparian vegetation
6P	Zone 6	Modified Standard	4,314	Modification is no thinning in riparian vegetation
6Q	Zone 6	Modified Standard	669	Modification is no thinning in riparian vegetation
6R	Zone 6	Modified Standard	1,845	Modification is no thinning in riparian vegetation
6S	Zone 6	Modified Standard	123	Modification is no thinning in riparian vegetation
6T	Zone 6	Modified Standard	2,753	Modification is no thinning in riparian vegetation
6U	Zone 6	Modified Standard	729	Modification is no thinning in riparian vegetation
6V	Zone 6	Modified Standard	543	Modification is no thinning in riparian vegetation
6W	Zone 6	Modified Standard	57	Modification is no thinning in riparian vegetation
7A	Zone 7	Modified Standard	1,451	Modification is to remove all nonnative vegetation.
8A	Zone 8	Unmodified Standard	7,908	Zone 8: Within 100 feet of structures: Mow grasses Clear flammable materials from the ground Reduce brush/scrub height to 2 feet Trim and thin unhealthy trees Reduce fuel ladders by pruning lower branches 6 ft up, or lower 1/3 of tree height on smaller trees

City of Goleta
Ellwood Mesa Open Space Fuel Reduction – Waiver de Minimis

Grid Number	Zone	Treatment ¹	Square Feet	Public Notes
8B	Zone 8	Unmodified Standard	7,226	<p>Within 100 feet of structures:</p> <p>Mow grasses</p> <p>Clear flammable materials from the ground</p> <p>Reduce brush/scrub height to 2 feet</p> <p>Trim and thin unhealthy trees</p> <p>Reduce fuel ladders by pruning lower branches 6 ft up, or lower 1/3 of tree height on smaller trees</p>
8C	Zone 8	Unmodified Standard	7,081	<p>Within 100 feet of structures:</p> <p>Mow grasses</p> <p>Clear flammable materials from the ground</p> <p>Reduce brush/scrub height to 2 feet</p> <p>Trim and thin unhealthy trees</p> <p>Reduce fuel ladders by pruning lower branches 6 ft up, or lower 1/3 of tree height on smaller trees</p>
8D	Zone 8	Unmodified Standard	7,088	<p>Within 100 feet of structures:</p> <p>Mow grasses</p> <p>Clear flammable materials from the ground</p> <p>Reduce brush/scrub height to 2 feet</p> <p>Trim and thin unhealthy trees</p> <p>Reduce fuel ladders by pruning lower branches 6 ft up, or lower 1/3 of tree height on smaller trees</p>
9A	Zone 8/ Zone 9	Unmodified Standard/ Modified Aggregation	6,717	<p>Zone 8:</p> <p>Within 100 feet of structures:</p> <p>Mow grasses</p> <p>Clear flammable materials from the ground</p> <p>Reduce brush/scrub height to 2 feet</p> <p>Trim and thin unhealthy trees</p> <p>Reduce fuel ladders by pruning lower branches 6 ft up, or lower 1/3 of tree height on smaller trees</p> <p>Zone 9: Modification is to reduce treatment of trees near aggregation areas, to prevent wind exposure.</p>
9B	Zone 9	Modified Aggregation	7,175	Modification is to reduce treatment of trees near aggregation areas, to prevent wind exposure.

Grid Number	Zone	Treatment ¹	Square Feet	Public Notes
9C	Zone 9	Modified Aggregation	7,025	Modification is to reduce treatment of trees near aggregation areas, to prevent wind exposure.
9D	Zone 9	Modified Aggregation	6,875	Modification is to reduce treatment of trees near aggregation areas, to prevent wind exposure.
9E	Zone 9	Modified Aggregation	5,780	Modification is to reduce treatment of trees near aggregation areas, to prevent wind exposure.
9F	Zone 9	Modified Aggregation	5,609	Modification is to reduce treatment of trees near aggregation areas, to prevent wind exposure.
9G	Zone 9	Modified Aggregation	6,840	Modification is to reduce treatment of trees near aggregation areas, to prevent wind exposure.
9H	Zone 9	Modified Aggregation	6,329	Modification is to reduce treatment of trees near aggregation areas, to prevent wind exposure.
9I	Zone 9	Modified Aggregation	7,043	Modification is to reduce treatment of trees near aggregation areas, to prevent wind exposure.
10A	Zone 9/ Zone 10	Modified Aggregation	9,582	<p>Zone 9: Modification is to reduce treatment of trees near aggregation areas, to prevent wind exposure.</p> <p>Zone 10: Modification is to reduce treatment of trees near aggregation areas, to prevent wind exposure.</p>
10B	Zone 10	Modified Aggregation	7,374	Modification is to reduce treatment of trees near aggregation areas, to prevent wind exposure.
10C	Zone 10	Modified Aggregation	7,106	Modification is to reduce treatment of trees near aggregation areas, to prevent wind exposure.

City of Goleta
Ellwood Mesa Open Space Fuel Reduction – Waiver de Minimis

Grid Number	Zone	Treatment ¹	Square Feet	Public Notes
10D 10E	Zone 10	Modified Aggregation	5,354	Modification is to reduce treatment of trees near aggregation areas, to prevent wind exposure.
10F 10G 10H 10I	Zone 10	Unmodified Standard	25,869	Within 100 feet of structures: Mow grasses; Clear flammable materials from the ground Reduce brush/scrub height to 2 feet; Trim and thin unhealthy trees Reduce fuel ladders by pruning lower branches 6 ft up, or lower 1/3 of tree height on smaller trees
11A	Zone 11 - East of existing SCE ROW	Modified Standard	1,188	Modification is to adjust treatment for vegetation east of trail, existing vegetation is largely landscaped with non-natives. (Note: Mapped as "Unmodified Standard" and that treatment type generally applies to Zone 11; some modification may be warranted to preserve native veg.
11B	Zone 11 - East of existing SCE ROW	Modified Standard	1,027	Modification is to adjust treatment for vegetation east of trail, existing vegetation is largely landscaped with non-natives. (Note: Mapped as "Unmodified Standard" and that treatment type generally applies to Zone 11; some modification may be warranted to preserve native veg.
11C	Zone 11 - East of existing SCE ROW	Modified Standard	869	Modification is to adjust treatment for vegetation east of trail, existing vegetation is largely landscaped with non-natives. (Note: Mapped as "Unmodified Standard" and that treatment type generally applies to Zone 11; some modification may be warranted to preserve native veg.
11D	Zone 11 - East of existing SCE ROW	Modified Standard	709	Modification is to adjust treatment for vegetation east of trail, existing vegetation is largely landscaped with non-natives. (Note: Mapped as "Unmodified Standard" and that treatment type generally applies to Zone 11; some modification may be warranted to preserve native veg.
11E	Zone 11 - East of existing SCE ROW	Modified Standard	780	Modification is to adjust treatment for vegetation east of trail, existing vegetation is largely landscaped with non-natives. (Note: Mapped as "Unmodified Standard" and that treatment type generally applies to Zone 11; some modification may be warranted to preserve native veg.
11F	Zone 11 - East of existing SCE ROW	Modified Standard	390	Modification is to adjust treatment for vegetation east of trail, existing vegetation is largely landscaped with non-natives. (Note: Mapped as "Unmodified Standard" and that treatment type generally applies to Zone 11; some modification may be warranted to preserve native veg.
11G	Zone 11 - East of existing SCE ROW	Modified Standard	229	Modification is to adjust treatment for vegetation east of trail, existing vegetation is largely landscaped with non-natives. (Note: Mapped as "Unmodified Standard" and that treatment type generally applies to Zone 11; some modification may be warranted to preserve native veg.

Grid Number	Zone	Treatment ¹	Square Feet	Public Notes
12A	Zone 11 - East of existing SCE ROW / Zone 12	Unmodified Standard	6,737	Within 100 feet of structures: Mow grasses Clear flammable materials from the ground Reduce brush/scrub height to 2 feet Trim and thin unhealthy trees Reduce fuel ladders by pruning lower branches 6 ft up, or lower 1/3 of tree height on smaller trees
12B	Zone 12	Unmodified Standard	6,546	Within 100 feet of structures: Mow grasses Clear flammable materials from the ground Reduce brush/scrub height to 2 feet Trim and thin unhealthy trees Reduce fuel ladders by pruning lower branches 6 ft up, or lower 1/3 of tree height on smaller trees
12C	Zone 12/ Zone 13	Unmodified Standard	2,596	Within 100 feet of structures: Mow grasses Clear flammable materials from the ground Reduce brush/scrub height to 2 feet Trim and thin unhealthy trees Reduce fuel ladders by pruning lower branches 6 ft up, or lower 1/3 of tree height on smaller trees.
13A	Zone 13	Modified Standard	5,853	Modification is to keep native grasses, no mowing.
13B	Zone 13	Modified Standard	7,307	Modification is to keep native grasses, no mowing.
14A	Zone 14	Modified Standard	7,291	Modification is to remove fire prone landscaped non-native vegetation.
14B	Zone 14	Modified Standard	7,659	Modification is to remove fire prone landscaped non-native vegetation
15A	Zone 14/ Zone 15	Modified Standard/Modified Standard	6,977	Modification is to remove fire prone landscaped non-native vegetation.
15B	Zone 15	Modified Standard	5,289	Modification is to remove fire prone landscaped non-native vegetation.
15C	Zone 15	Modified Standard	4,220	Modification is to remove fire prone landscaped non-native vegetation.
15D	Zone 15	Modified Standard	2,883	Modification is to remove fire prone landscaped non-native vegetation.

City of Goleta
Ellwood Mesa Open Space Fuel Reduction – Waiver de Minimis

Grid Number	Zone	Treatment ¹	Square Feet	Public Notes
15E	Zone 15	Modified Standard	5,457	Modification is to remove fire prone landscaped non-native vegetation.
16A	Zone 16	Unmodified Standard	10,066	Within 100 feet of structures: Mow grasses Clear flammable materials from the ground Reduce brush/scrub height to 2 feet Trim and thin unhealthy trees Reduce fuel ladders by pruning lower branches 6 ft up, or lower 1/3 of tree height on smaller trees
16B	Zone 16	Unmodified Standard	1,937	Within 100 feet of structures: Mow grasses Clear flammable materials from the ground Reduce brush/scrub height to 2 feet Trim and thin unhealthy trees Reduce fuel ladders by pruning lower branches 6 ft up, or lower 1/3 of tree height on smaller trees
16C	Zone 16	Unmodified Standard	7,057	Within 100 feet of structures: Mow grasses Clear flammable materials from the ground Reduce brush/scrub height to 2 feet Trim and thin unhealthy trees Reduce fuel ladders by pruning lower branches 6 ft up, or lower 1/3 of tree height on smaller trees
16D	Zone 16	Unmodified Standard	7,648	Within 100 feet of structures: Mow grasses Clear flammable materials from the ground Reduce brush/scrub height to 2 feet Trim and thin unhealthy trees Reduce fuel ladders by pruning lower branches 6 ft up, or lower 1/3 of tree height on smaller trees

Grid Number	Zone	Treatment ¹	Square Feet	Public Notes
16E	Zone 16	Unmodified Standard	7,031	<p>Within 100 feet of structures:</p> <p>Mow grasses</p> <p>Clear flammable materials from the ground</p> <p>Reduce brush/scrub height to 2 feet</p> <p>Trim and thin unhealthy trees</p> <p>Reduce fuel ladders by pruning lower branches 6 ft up, or lower 1/3 of tree height on smaller trees</p>
16F	Zone 16	Unmodified Standard	6,342	<p>Within 100 feet of structures:</p> <p>Mow grasses</p> <p>Clear flammable materials from the ground</p> <p>Reduce brush/scrub height to 2 feet</p> <p>Trim and thin unhealthy trees</p> <p>Reduce fuel ladders by pruning lower branches 6 ft up, or lower 1/3 of tree height on smaller trees</p>
17A	Zone 16/ Zone 17	Unmodified Standard/Modified Aggregation	6,287	<p>Zone 16:</p> <p>Within 100 feet of structures:</p> <p>Mow grasses</p> <p>Clear flammable materials from the ground</p> <p>Reduce brush/scrub height to 2 feet</p> <p>Trim and thin unhealthy trees</p> <p>Reduce fuel ladders by pruning lower branches 6 ft up, or lower 1/3 of tree height on smaller trees</p> <p>Zone 17: Modification to be determined based on wind model data and with monarch butterfly specialist at the time of treatment. Some trees to be retained for wind protection of aggregation site.</p>
17B	Zone 17	Modified Aggregation	4,411	<p>Modification to be determined based on wind model data and with monarch butterfly specialist at the time of treatment. Some trees to be retained for wind protection of aggregation site.</p>
17C	Zone 17	Modified Aggregation	4,006	<p>Modification to be determined based on wind model data and with monarch butterfly specialist at the time of treatment. Some trees to be retained for wind protection of aggregation site.</p>

City of Goleta
Ellwood Mesa Open Space Fuel Reduction – Waiver de Minimis

Grid Number	Zone	Treatment ¹	Square Feet	Public Notes
17D	Zone 17	Modified Aggregation	4,664	Modification to be determined based on wind model data and with monarch butterfly specialist at the time of treatment. Some trees to be retained for wind protection of aggregation site.
18A	Zone 18	Modified Standard	7,097	Modification is to limit pruning of native trees and leave saplings in place. Standard treatment for nonnative vegetation.
19A	Zone 19	Unmodified Standard	6,074	Within 100 feet of structures: Mow grasses Clear flammable materials from the ground Reduce brush/scrub height to 2 feet Trim and thin unhealthy trees Reduce fuel ladders by pruning lower branches 6 ft up, or lower 1/3 of tree height on smaller trees
19B	Zone 19	Unmodified Standard	2,624	Within 100 feet of structures: Mow grasses Clear flammable materials from the ground Reduce brush/scrub height to 2 feet Trim and thin unhealthy trees Reduce fuel ladders by pruning lower branches 6 ft up, or lower 1/3 of tree height on smaller trees
19C	Zone 19	Unmodified Standard	1,023	Within 100 feet of structures: Mow grasses Clear flammable materials from the ground Reduce brush/scrub height to 2 feet Trim and thin unhealthy trees Reduce fuel ladders by pruning lower branches 6 ft up, or lower 1/3 of tree height on smaller trees
19D	Zone 19	Unmodified Standard	6,143	Within 100 feet of structures: Mow grasses Clear flammable materials from the ground Reduce brush/scrub height to 2 feet Trim and thin unhealthy trees Reduce fuel ladders by pruning lower branches 6 ft up, or lower 1/3 of tree height on smaller trees

Grid Number	Zone	Treatment ¹	Square Feet	Public Notes
19E	Zone 19	Unmodified Standard	7,521	<p>Within 100 feet of structures:</p> <p>Mow grasses</p> <p>Clear flammable materials from the ground</p> <p>Reduce brush/scrub height to 2 feet</p> <p>Trim and thin unhealthy trees</p> <p>Reduce fuel ladders by pruning lower branches 6 ft up, or lower 1/3 of tree height on smaller trees</p>
19F	Zone 19	Unmodified Standard	7,017	<p>Within 100 feet of structures:</p> <p>Mow grasses</p> <p>Clear flammable materials from the ground</p> <p>Reduce brush/scrub height to 2 feet</p> <p>Trim and thin unhealthy trees</p> <p>Reduce fuel ladders by pruning lower branches 6 ft up, or lower 1/3 of tree height on smaller trees</p>
19G	Zone 19	Unmodified Standard	5,294	<p>Within 100 feet of structures:</p> <p>Mow grasses</p> <p>Clear flammable materials from the ground</p> <p>Reduce brush/scrub height to 2 feet</p> <p>Trim and thin unhealthy trees</p> <p>Reduce fuel ladders by pruning lower branches 6 ft up, or lower 1/3 of tree height on smaller trees</p>
20A	Zone 20	Unmodified Standard	5,547	<p>Within 100 feet of structures:</p> <p>Mow grasses</p> <p>Clear flammable materials from the ground</p> <p>Reduce brush/scrub height to 2 feet</p> <p>Trim and thin unhealthy trees</p> <p>Reduce fuel ladders by pruning lower branches 6 ft up, or lower 1/3 of tree height on smaller trees</p>

City of Goleta
Ellwood Mesa Open Space Fuel Reduction – Waiver de Minimis

Grid Number	Zone	Treatment ¹	Square Feet	Public Notes
20B	Zone 20	Unmodified Standard	7,352	<p>Within 100 feet of structures:</p> <p>Mow grasses</p> <p>Clear flammable materials from the ground</p> <p>Reduce brush/scrub height to 2 feet</p> <p>Trim and thin unhealthy trees</p> <p>Reduce fuel ladders by pruning lower branches 6 ft up, or lower 1/3 of tree height on smaller trees</p>
20C	Zone 20/ Zone 21	Unmodified Standard/ Unmodified Standard	7,716	<p>Zone 20 and 21:</p> <p>Within 100 feet of structures:</p> <p>Mow grasses</p> <p>Clear flammable materials from the ground</p> <p>Reduce brush/scrub height to 2 feet</p> <p>Trim and thin unhealthy trees</p> <p>Reduce fuel ladders by pruning lower branches 6 ft up, or lower 1/3 of tree height on smaller trees</p>
21A	Zone 21	Modified Standard	4,322	Modification to be determined in collaboration with the Audubon Society due to high value habitat for migrating birds.
21B	Zone 21	Modified Standard	8,845	Modification to be determined in collaboration with the Audubon Society due to high value habitat for migrating birds.
21C	Zone 21	Modified Standard	6,156	Modification to be determined in collaboration with the Audubon Society due to high value habitat for migrating birds.
22A	Zone 22	Modified Standard/ Unmodified Standard	6,573	<p>Zone 21 and Zone 22:</p> <p>Modification to be determined in collaboration with the Audubon Society due to high value habitat for migrating birds</p> <p>Within 100 feet of structures:</p> <p>Mow grasses</p> <p>Clear flammable materials from the ground</p> <p>Reduce brush/scrub height to 2 feet</p> <p>Trim and thin unhealthy trees</p> <p>Reduce fuel ladders by pruning lower branches 6 ft up, or lower 1/3 of tree height on smaller trees</p>

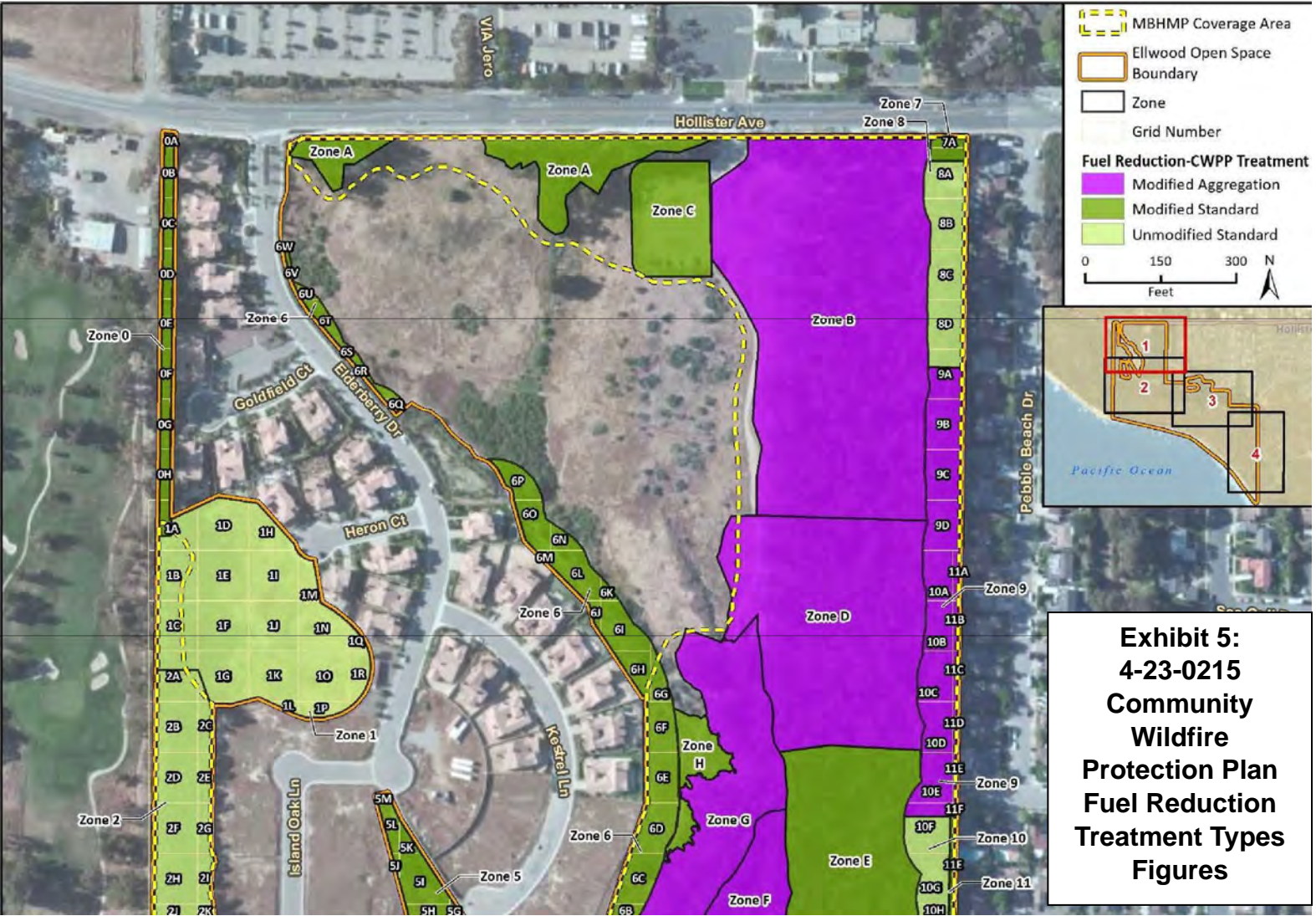
Grid Number	Zone	Treatment ¹	Square Feet	Public Notes
22B	Zone 22	Unmodified Standard	6,874	<p>Within 100 feet of structures:</p> <p>Mow grasses</p> <p>Clear flammable materials from the ground</p> <p>Reduce brush/scrub height to 2 feet</p> <p>Trim and thin unhealthy trees</p> <p>Reduce fuel ladders by pruning lower branches 6 ft up, or lower 1/3 of tree height on smaller trees</p>
23A	Zone 22/ Zone 23	Unmodified Standard/ Unmodified Aggregation	8,350	<p>Zone 22:</p> <p>Within 100 feet of structures:</p> <p>Mow grasses</p> <p>Clear flammable materials from the ground</p> <p>Reduce brush/scrub height to 2 feet</p> <p>Trim and thin unhealthy trees</p> <p>Reduce fuel ladders by pruning lower branches 6 ft up, or lower 1/3 of tree height on smaller trees</p> <p>Zone 23:</p> <p>Within 100 feet of monarch aggregation sites:</p> <p>Mow grasses</p> <p>Clear flammable materials from the ground</p> <p>Reduce brush/scrub height to 3 feet</p> <p>Trim and thin unhealthy trees</p> <p>Reduce fuel ladders and intermittent patches of shrubs and small trees in openings</p>
23B	Zone 23	Unmodified Aggregation	8,972	<p>Within 100 feet of monarch aggregation sites:</p> <p>Mow grasses</p> <p>Clear flammable materials from the ground</p> <p>Reduce brush/scrub height to 3 feet</p> <p>Trim and thin unhealthy trees</p> <p>Reduce fuel ladders and intermittent patches of shrubs and small trees in openings</p>
Zone A	Zone A	Modified Standard	21,225	Modification is to leave riparian intact, no thinning of trees.
Zone B	Zone B	Modified Aggregation	282,126	Modification is to leave wind break of trees on northern, eastern, and western boundaries.
Zone C	Zone C	Modified Standard	28,254	Modification is to not mow native grasses until after seed drop.

City of Goleta
Ellwood Mesa Open Space Fuel Reduction – Waiver de Minimis

Grid Number	Zone	Treatment ¹	Square Feet	Public Notes
	Zone D	Modified Aggregation	194,610	Modification is to include creation of designed butterfly aggregation sites while protecting existing aggregation sites.
	Zone E	Modified Standard	198,245	Modification is to leave wind break of trees on western edge to protect Zone F.
	Zone F	Modified Aggregation	78,263	Modification is to include creation of designed butterfly aggregation sites.
	Zone G	Modified Aggregation	109,275	Modification is to leave native riparian vegetation intact, no thinning of native trees, and leave wind break of trees protecting Zone F.
	Zone H	Modified Standard	23,156	Modification is to leave wind break of trees.
	Zone I	Modified Aggregation	147,160	Modification is to leave wind break of trees on southern,northern, and western boundaries, and leave riparian vegetation intact.
	Zone J	Modified Aggregation	167,515	Modification to include mowing with consideration and avoidance of native grasses (bunching and not bunching); leave wind break of trees on northern boundary.
	Zone K	Modified Aggregation	297,902	Modification to include cleanup of dead/browning vegetation. Eucalyptus trees to be left in place unless infested with beetles. Treatment of fuels (mostly grasses) on grove margin.
	Zone L	Modified Standard	202,512	Modification is to include felling a high fraction of standing dead eucalyptus trees, limbing down trees, and generally leaving large trunks in place.
	Zone M	Modified Aggregation	388,949	Modification is to leave riparian vegetation intact, no thinning of native trees.
	Zone N	Modified Aggregation	271,234	Modification is to leave riparian vegetation intact, no tree thinning, and incorporate protection of avian habitat at Coronado Seep in coordination with Audubon Society.
	Zone O	Unmodified Aggregation (Incorrectly Mapped as Unmodified Standard in Fig 22c)	56,634	Within 100 feet of monarch aggregation sites: Mow grasses Clear flammable materials from the ground Reduce brush/scrub height to 3 feet Trim and thin unhealthy trees Reduce fuel ladders and intermittent patches of shrubs and small trees in openings
	Zone P	Modified Aggregation (Incorrectly Mapped as Modified Standard in Fig 22c)	146,288	Modification is no thinning of riparian trees and no disturbance to coastal sage scrub vegetation.

Grid Number	Zone	Treatment ¹	Square Feet	Public Notes
	Zone Q	Unmodified Aggregation (Incorrectly Mapped as Unmodified Standard in Fig 22c)	170,051	Within 100 feet of monarch aggregation sites: Mow grasses Clear flammable materials from the ground Reduce brush/scrub height to 3 feet Trim and thin unhealthy trees Reduce fuel ladders and intermittent patches of shrubs and small trees in openings
	Zone R	Unmodified Aggregation	186,189	Within 100 feet of monarch aggregation sites: Mow grasses Clear flammable materials from the ground Reduce brush/scrub height to 3 feet Trim and thin unhealthy trees Reduce fuel ladders and intermittent patches of shrubs and small trees in openings.

¹ Both Modified and Unmodified Aggregation treatments retain the trees that provide wind protection to the aggregation sites, vegetation removal is focused on dead and downed trees and vegetation zero to six feet in height.



**Exhibit 5:
4-23-0215
Community
Wildfire
Protection Plan
Fuel Reduction
Treatment Types
Figures**

