

CALIFORNIA COASTAL COMMISSION

South Coast District Office
301 E Ocean Blvd., Suite 300
Long Beach, CA 90802-4302
(562) 590-5071



W8c

5-22-0562 (BOWMAN)

APRIL 12, 2023

EXHIBITS

Table of Contents

EXHIBIT NO. 1 – LOCATION MAP	2
EXHIBIT NO. 2 – BULKHEAD SITE PLAN AND ELEVATION	3
EXHIBIT NO. 3 – SECTION PLAN.....	4

Exhibit No. 1 – Location Map

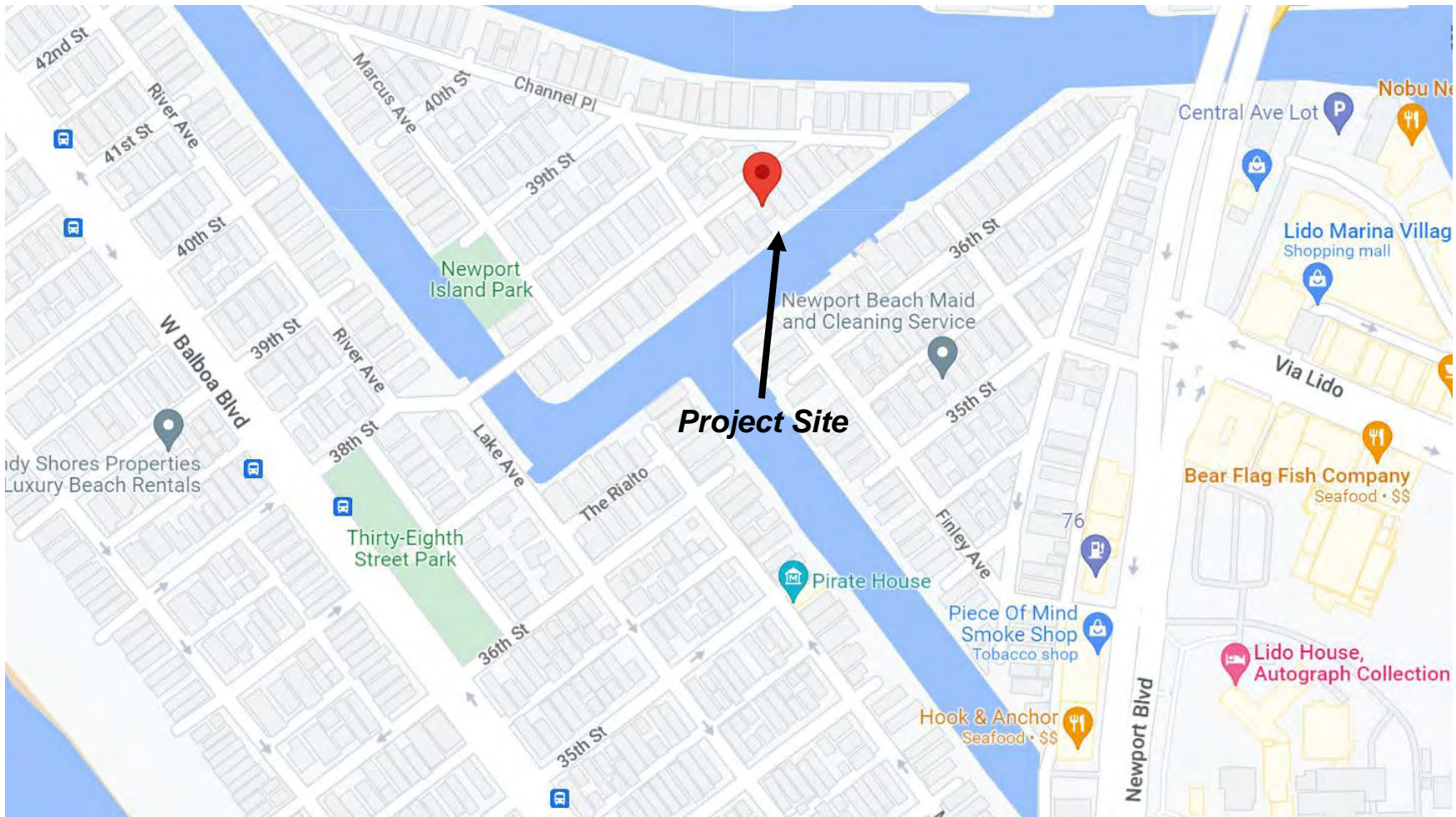


Exhibit No. 2 – Bulkhead Site Plan and Elevation

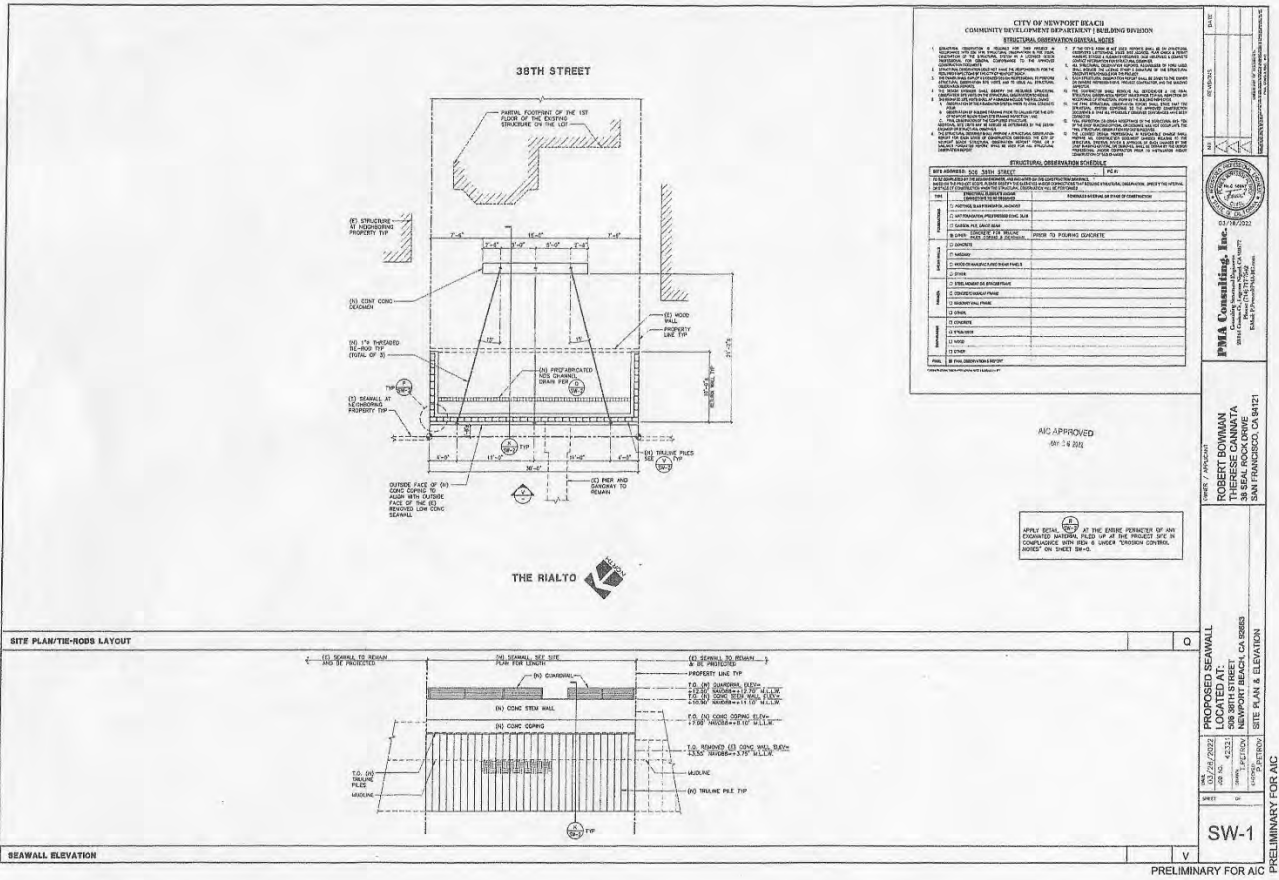
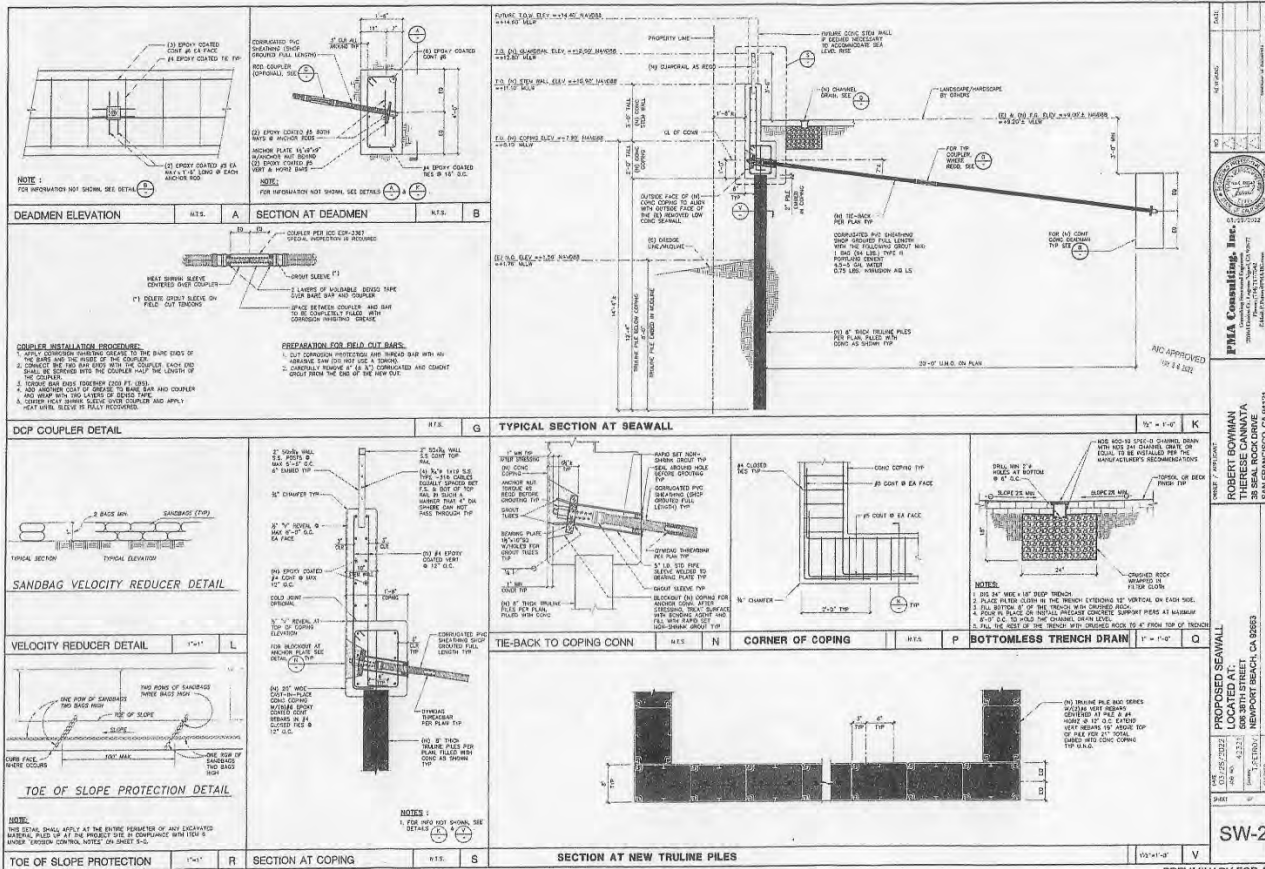


Exhibit No. 3 – Section Plan



PREPARED BY: FHMA CONSULTING, INC.
PROJECT: PROPOSED SEAWALL LOCATED AT: 608 30TH STREET, NEWPORT BEACH, CA 92659
DATE: 05/22/2012
SCALE: AS SHOWN
APPROVED: ROBERT BOWMAN, PROJECT MANAGER, FHMA CONSULTING, INC.
DATE: 05/22/2012
FOR: PRELIMINARY FOR A/C
SW-2