

CALIFORNIA COASTAL COMMISSION

SOUTH CENTRAL COAST DISTRICT OFFICE
89 S. CALIFORNIA STREET, SUITE 200
VENTURA, CA 93001
PHONE (805) 585-1800



F13a

4-21-0498 (City of Oxnard, The Nature Conservancy, and California Coastal Conservancy)

May 12, 2023

EXHIBITS

Table of Contents

EXHIBIT 1 – VICINITY MAP2

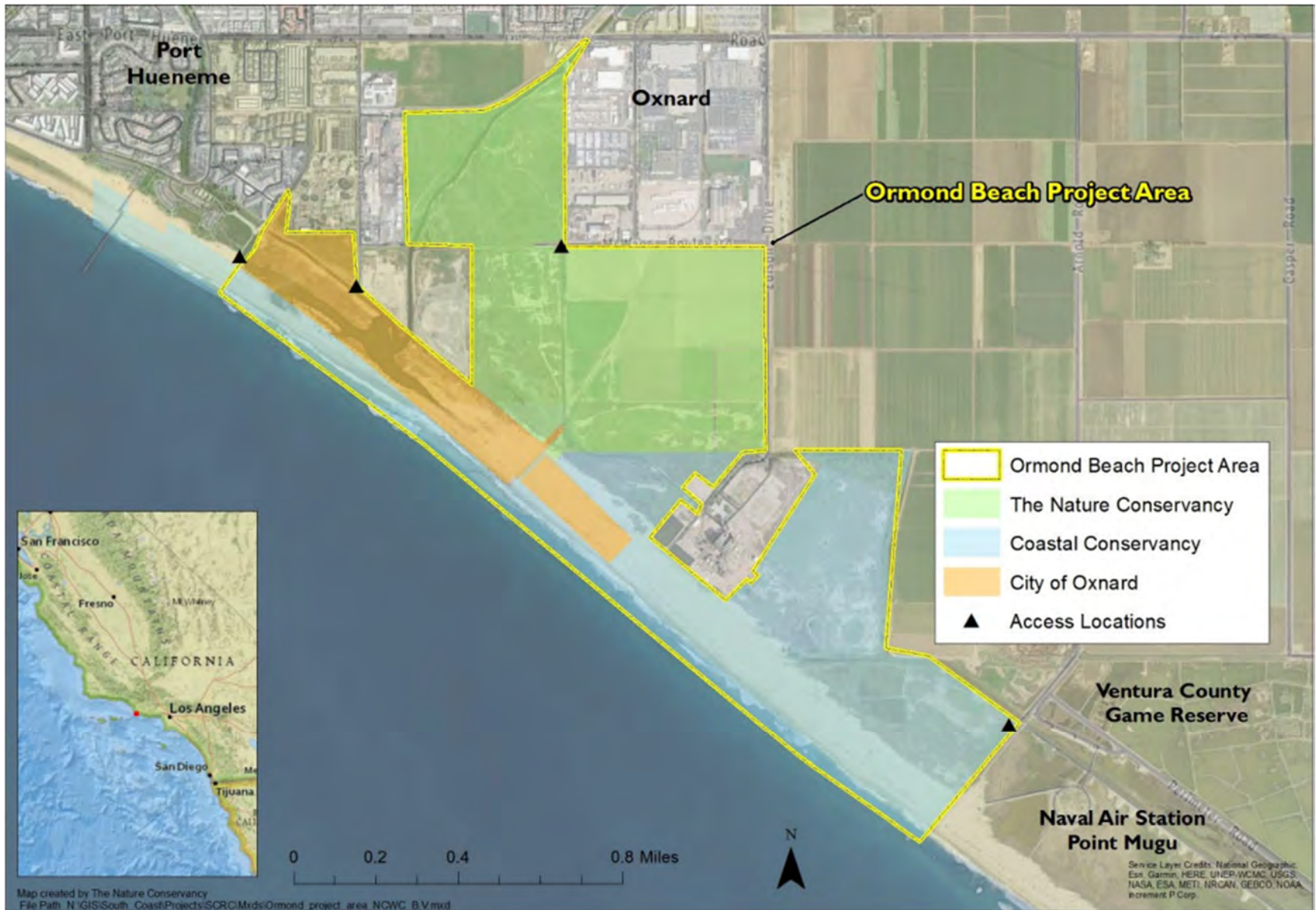
EXHIBIT 2 – PROPOSED PROJECT OVERVIEW MAP3

EXHIBIT 3 – PROPOSED SHOREBIRD HABITAT FENCING MAP AND PHOTOS4

EXHIBIT 4 – SHOREBIRD NESTING ACTIVITY MAPS.....6

EXHIBIT 5 – ACCESS ROADS, TRAILS, & STAGING AREAS MAP8

EXHIBIT 6 – FIELD DATA COLLECTION MAP9



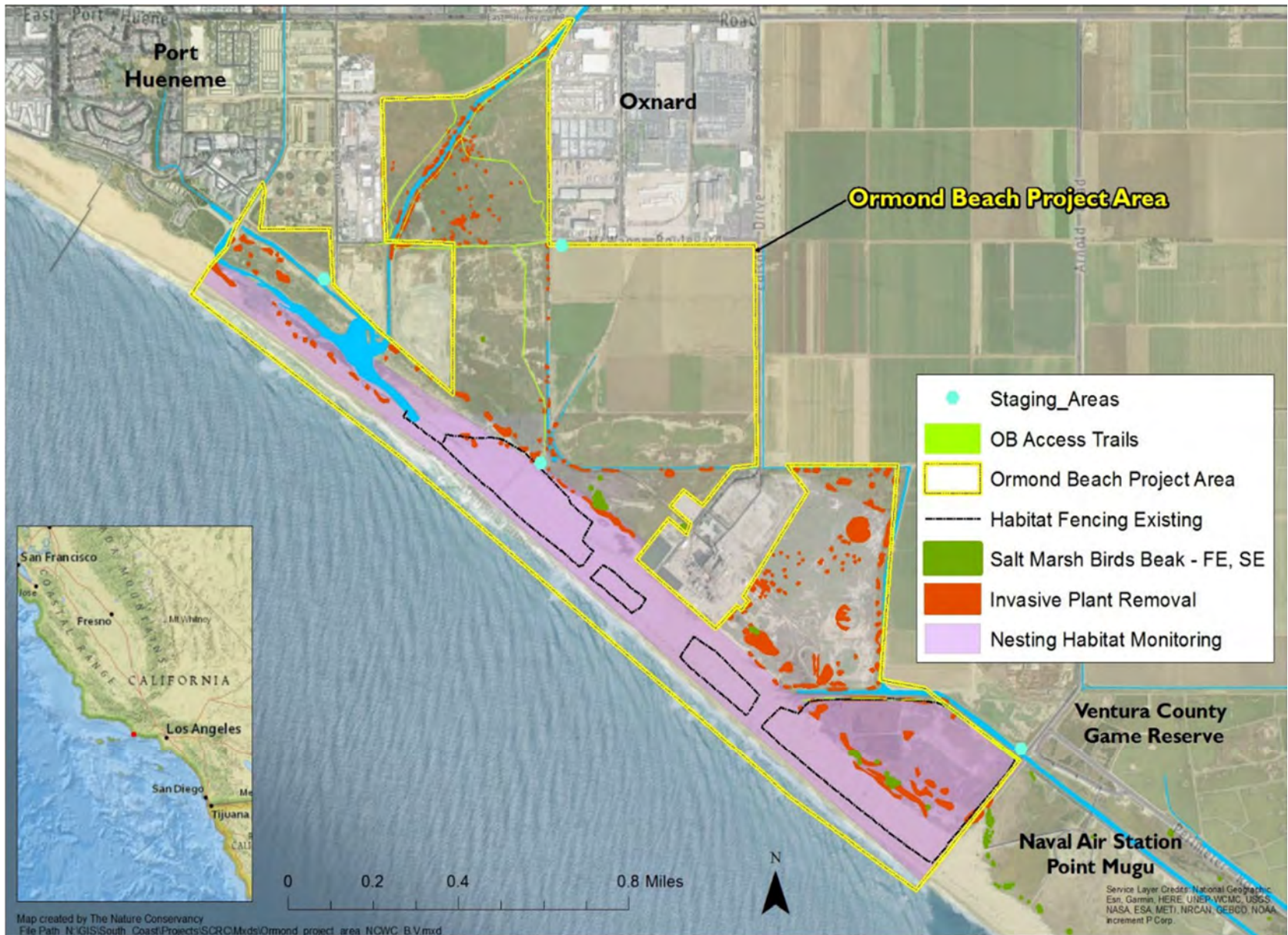
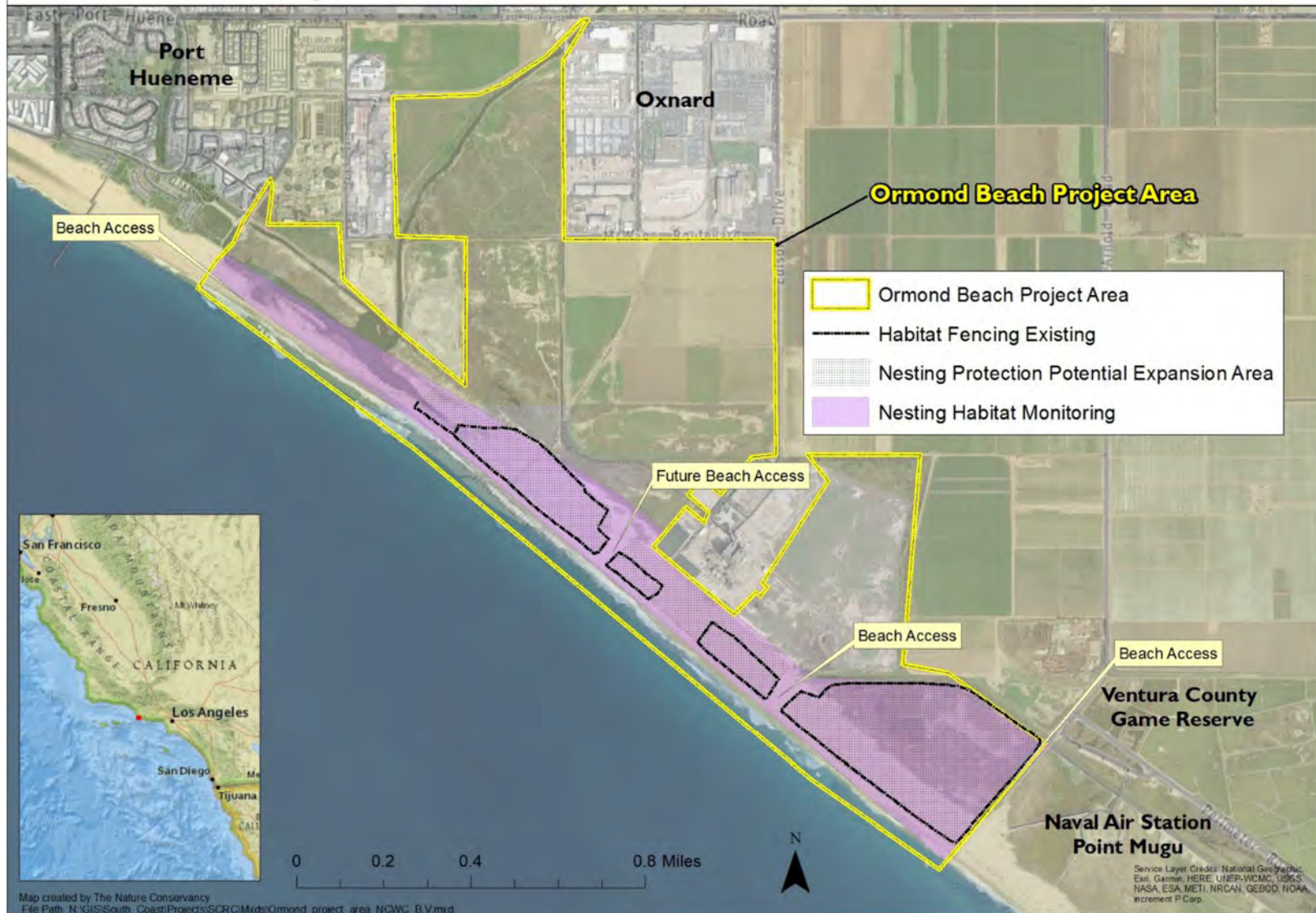


EXHIBIT 2
4-21-0498 (City of Oxnard, TNC, Conservancy)
PROPOSED PROJECT OVERVIEW MAP

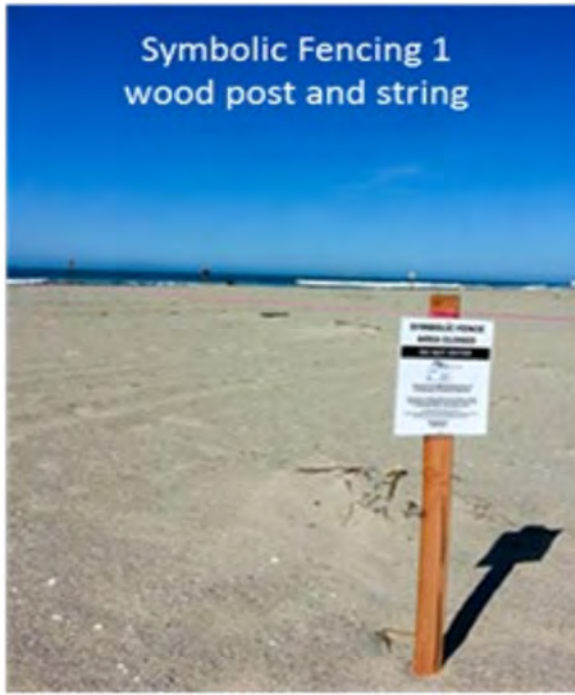
Shorebird Nesting Habitat Protection



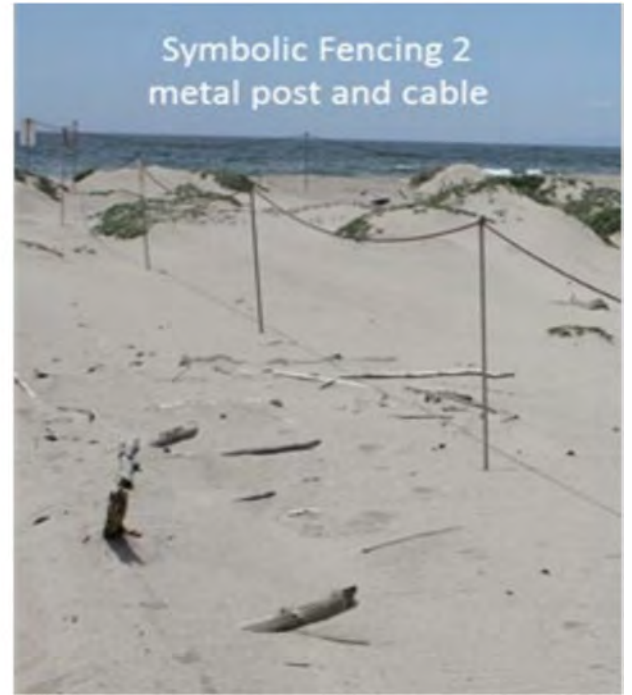
Habitat Fencing



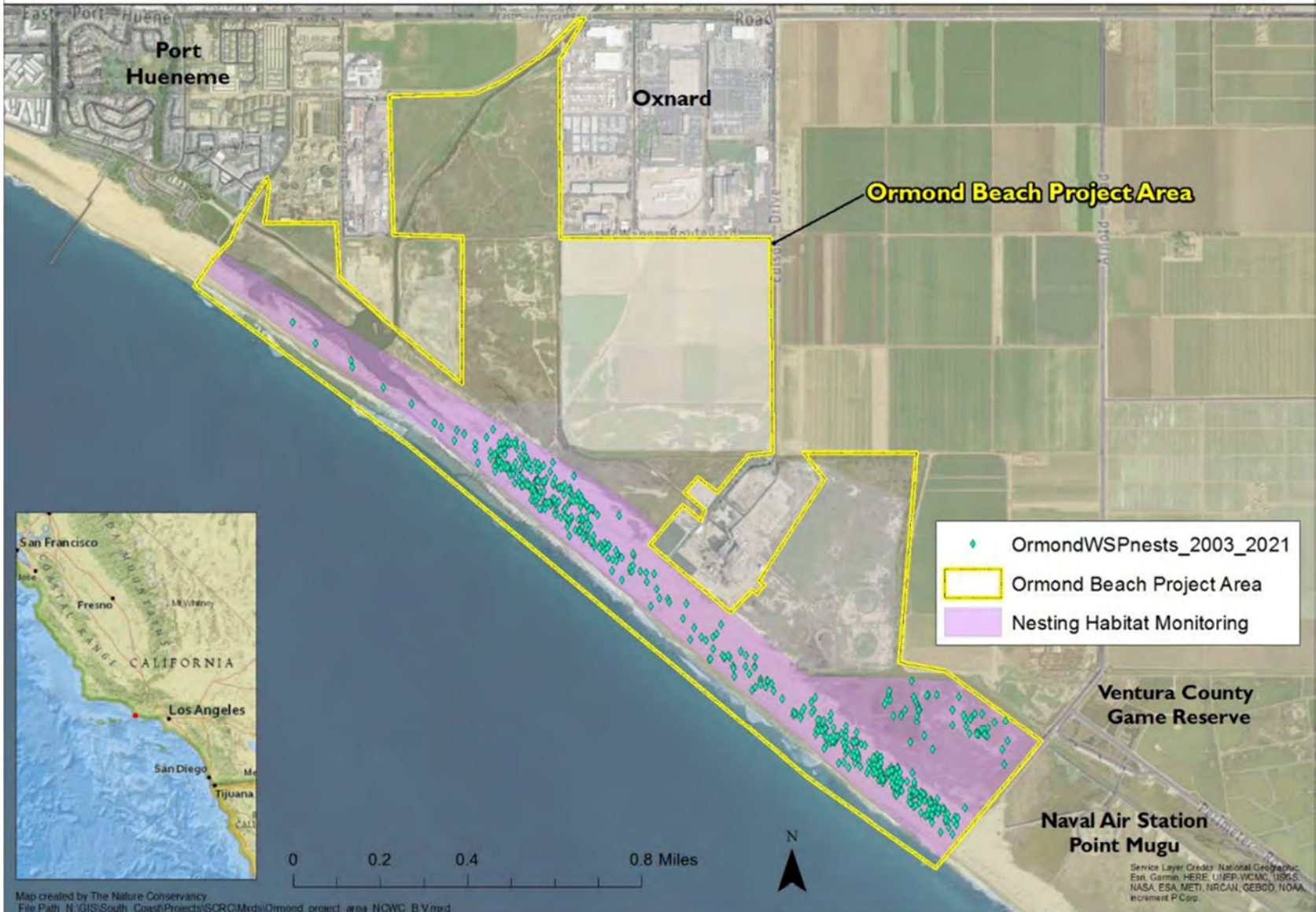
Symbolic Fencing 1
wood post and string



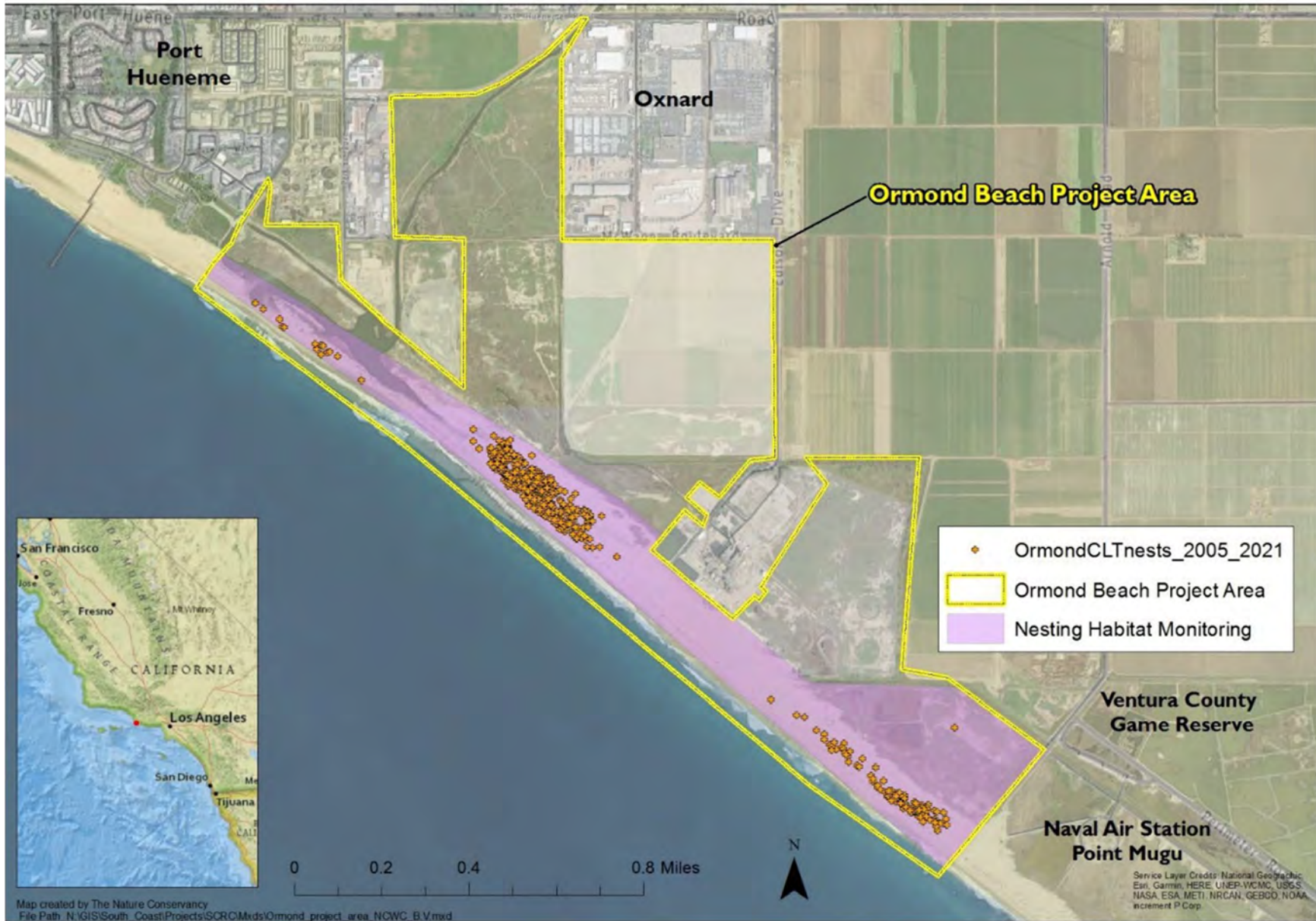
Symbolic Fencing 2
metal post and cable



Western snowy plover nesting activity 2003-2021



California least tern nesting activity 2005-2021



Access Roads, Trails and Staging Areas

