

**CALIFORNIA COASTAL COMMISSION**

SAN DIEGO DISTRICT OFFICE  
7575 METROPOLITAN DRIVE, SUITE 103  
SAN DIEGO, CA 92108-4402  
VOICE (619) 767-2370  
FAX (619) 767-2384



# Th6c

**6-22-0917 (Bradberry SFR)**

**July 13, 2023**

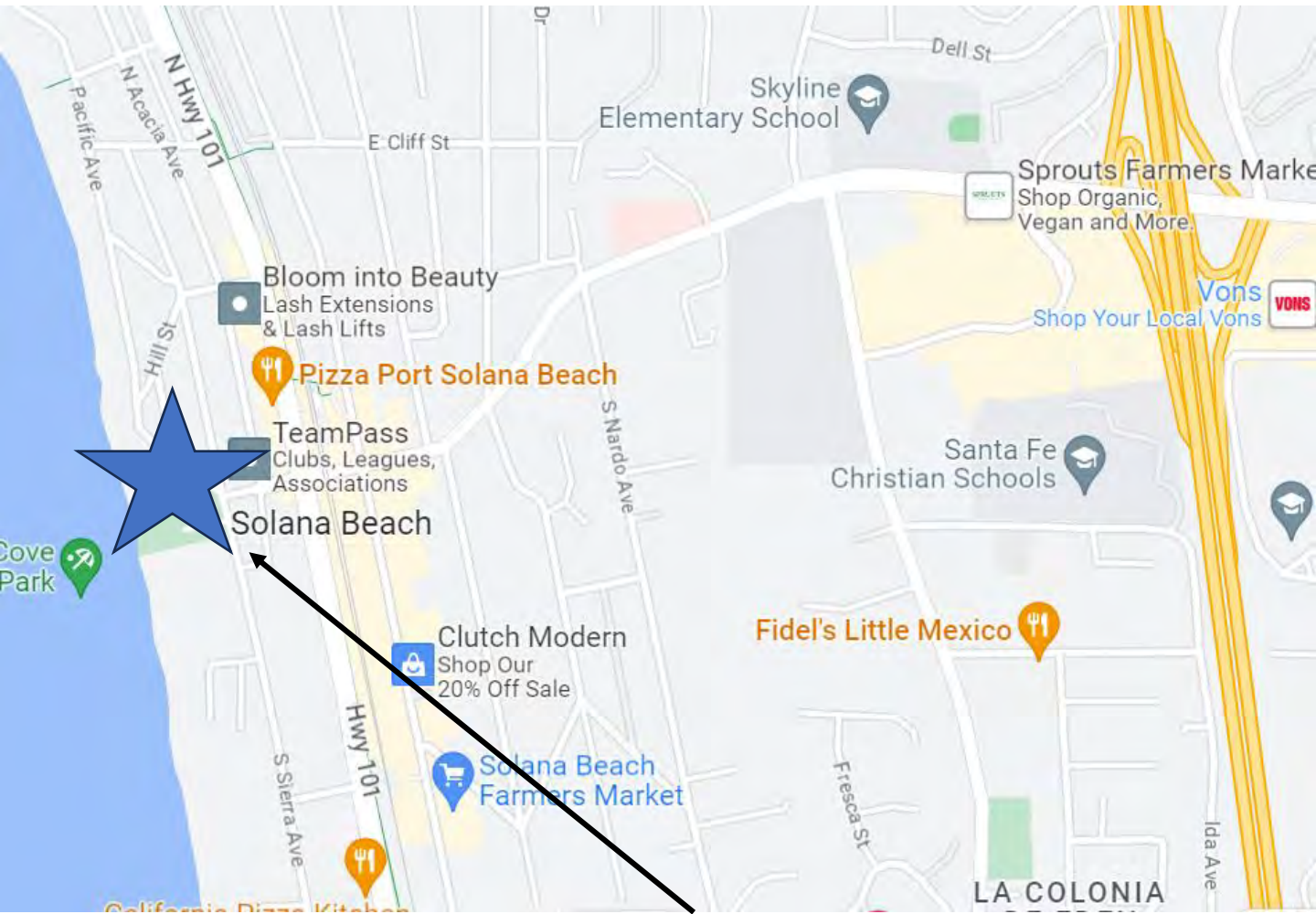
## EXHIBITS

### Table of Contents

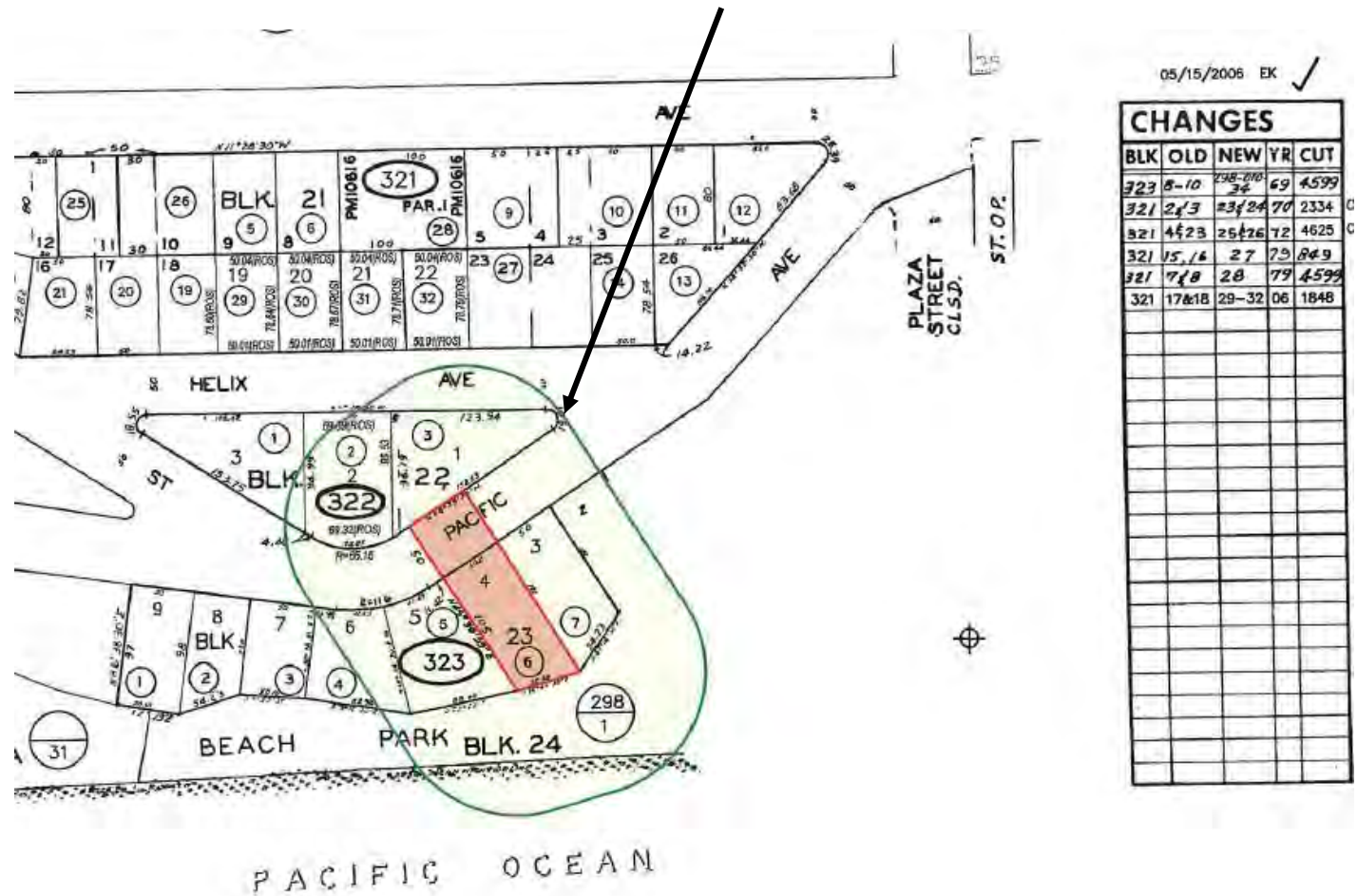
**EXHIBIT 1: Vicinity Map**

**EXHIBIT 2: Site Plan**

**EXHIBIT 3: Proposed Project**

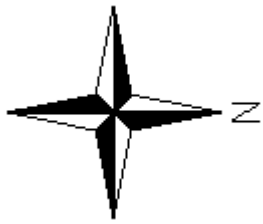


Site

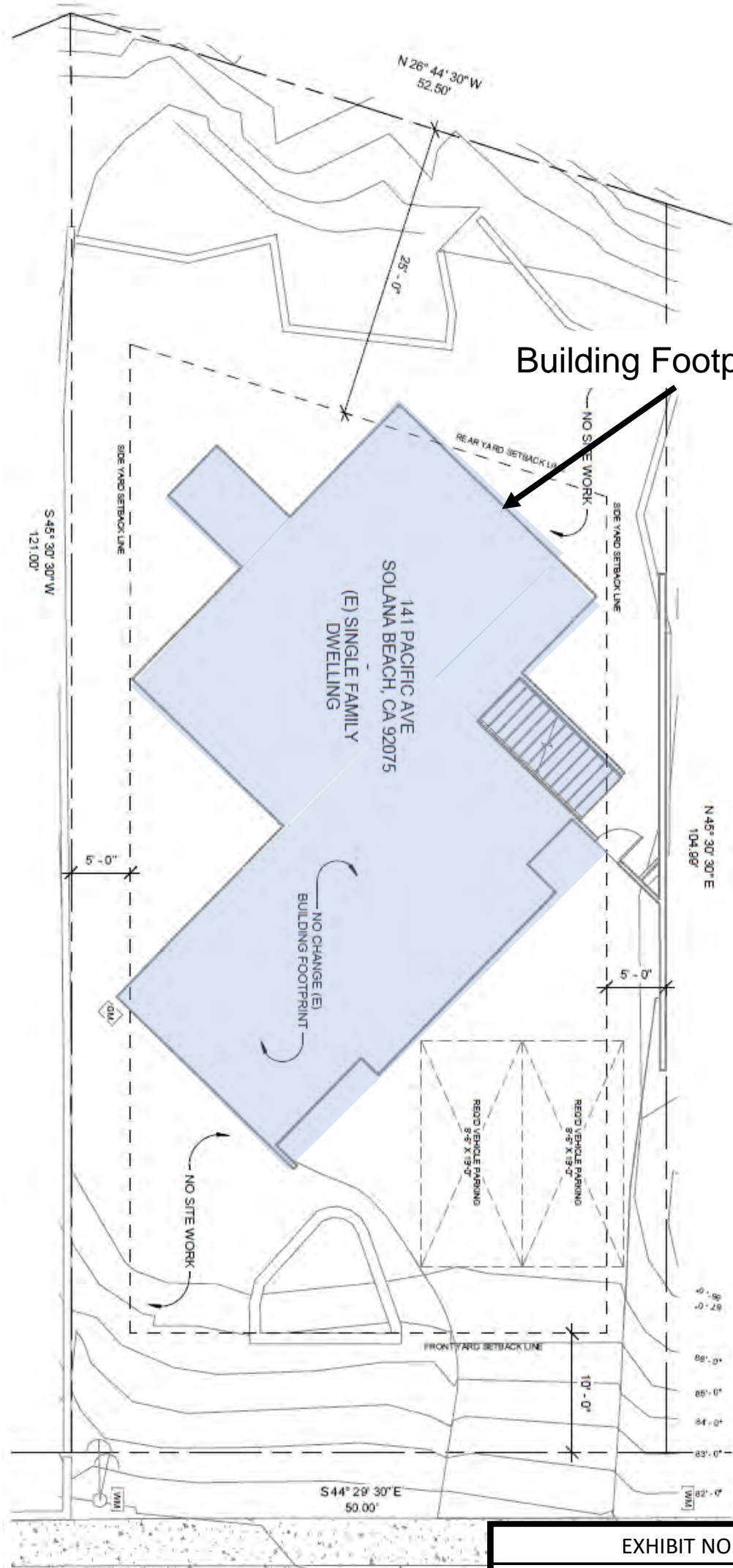


05/15/2006 EK ✓

CHANGES				
BLK	OLD	NEW	YR	CUT
323	8-10	198-210	22	69 4599
321	243	234 24	70	2334
321	4423	25426	72	4625
321	15, 16	27	79	849
321	748	28	79	4599
321	17&18	29-32	06	1848



# Pacific Ocean



Building Footprint

Pacific Avenue

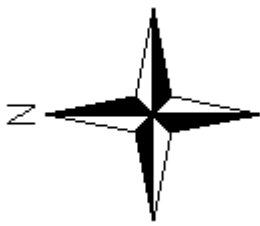
EXHIBIT NO. 2




Site Plan

6-22-0917

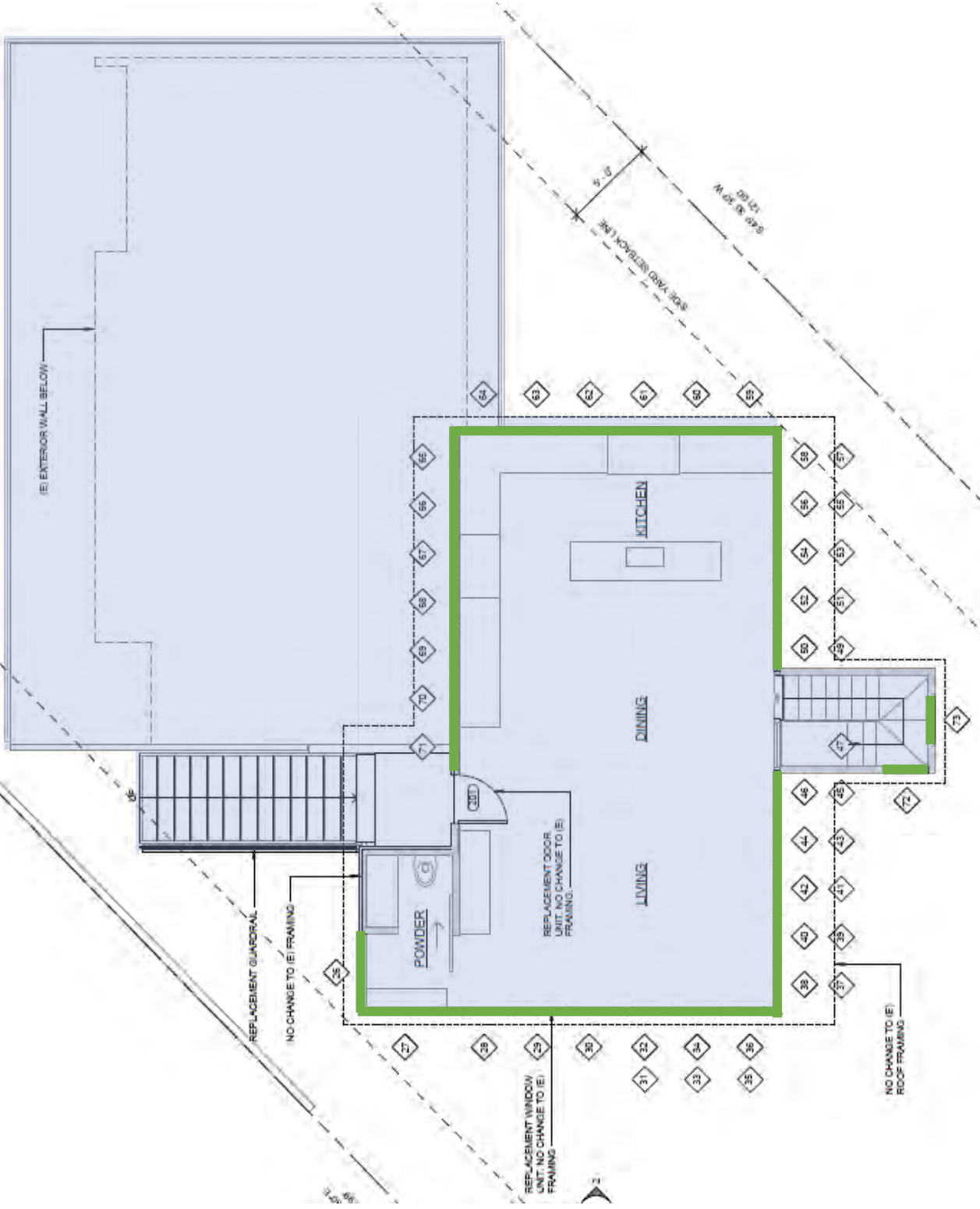
California Coastal Commission

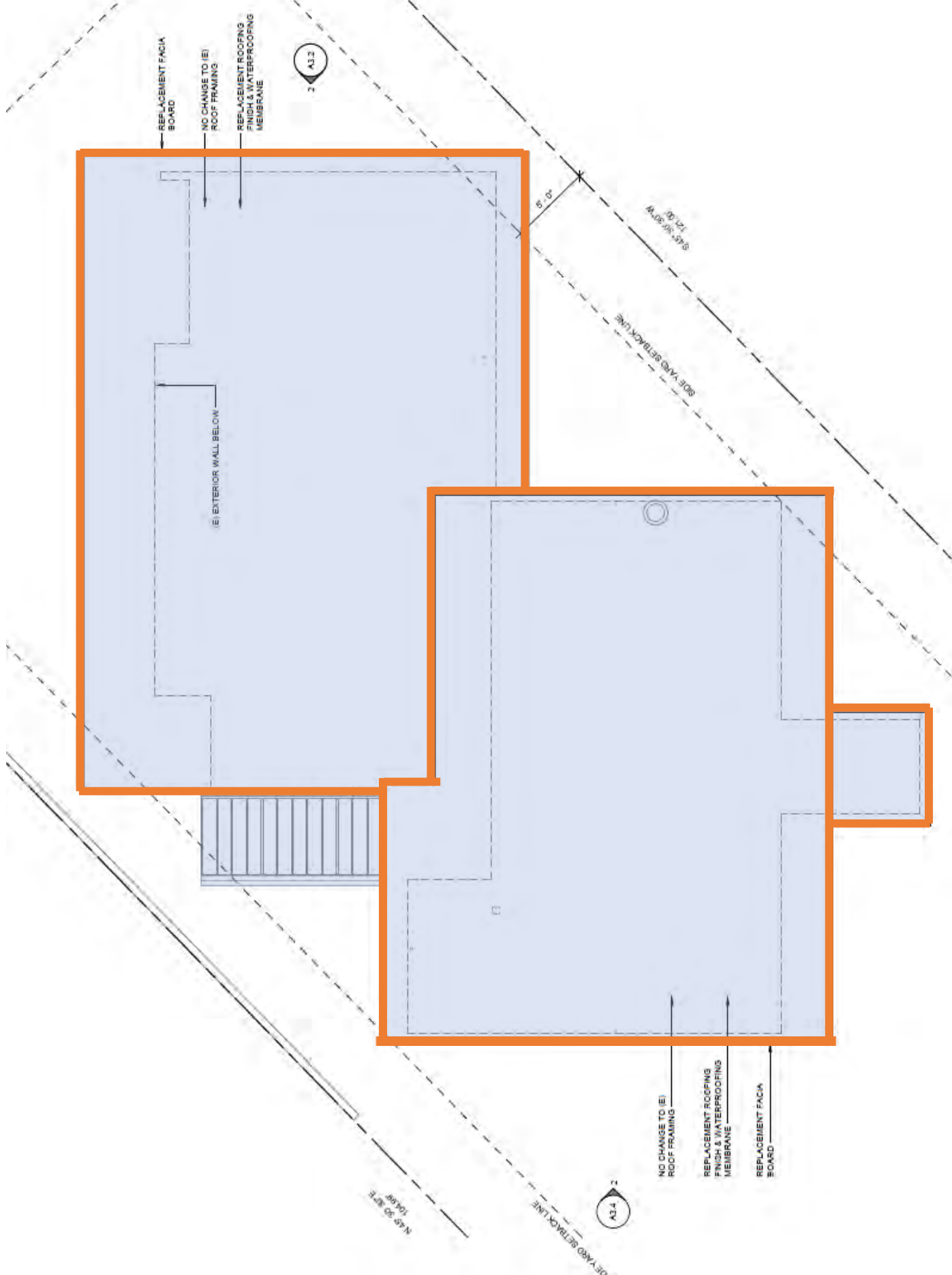




-  In-kind window replacement
-  In-kind door replacement
-  In-kind roof material replacement







REPLACEMENT FACIA BOARD  
NO CHANGE TO (E) ROOF FRAMING  
REPLACEMENT ROOFING FINISH & WATERPROOFING MEMBRANE

A3.2

8'-0"

90° YARD RETRACTION LINE

90° YARD RETRACTION LINE

(E) EXTERIOR WALL BELOW

NO CHANGE TO (E) ROOF FRAMING  
REPLACEMENT ROOFING FINISH & WATERPROOFING MEMBRANE  
REPLACEMENT FACIA BOARD

A3.2

90° YARD RETRACTION LINE

N 45° 30' ETS 100' 0"