

CALIFORNIA COASTAL COMMISSION

South Coast District Office
301 E Ocean Blvd., Suite 300
Long Beach, CA 90802-4302
(562) 590-5071



Th16a

**5-22-0337(City of Newport Beach, Newport Bay Conservancy,
and California Department of Fish Wildlife)**

JULY 26, 2023

EXHIBITS

Exhibit 1—Vicinity Map.....	2
Exhibit 2 – Previous Phases 1 and 2	3
Exhibit 3 – Phase 3 Project Plans	5
Exhibit 4 – Site Photos.....	10

Exhibit 1—Vicinity Map

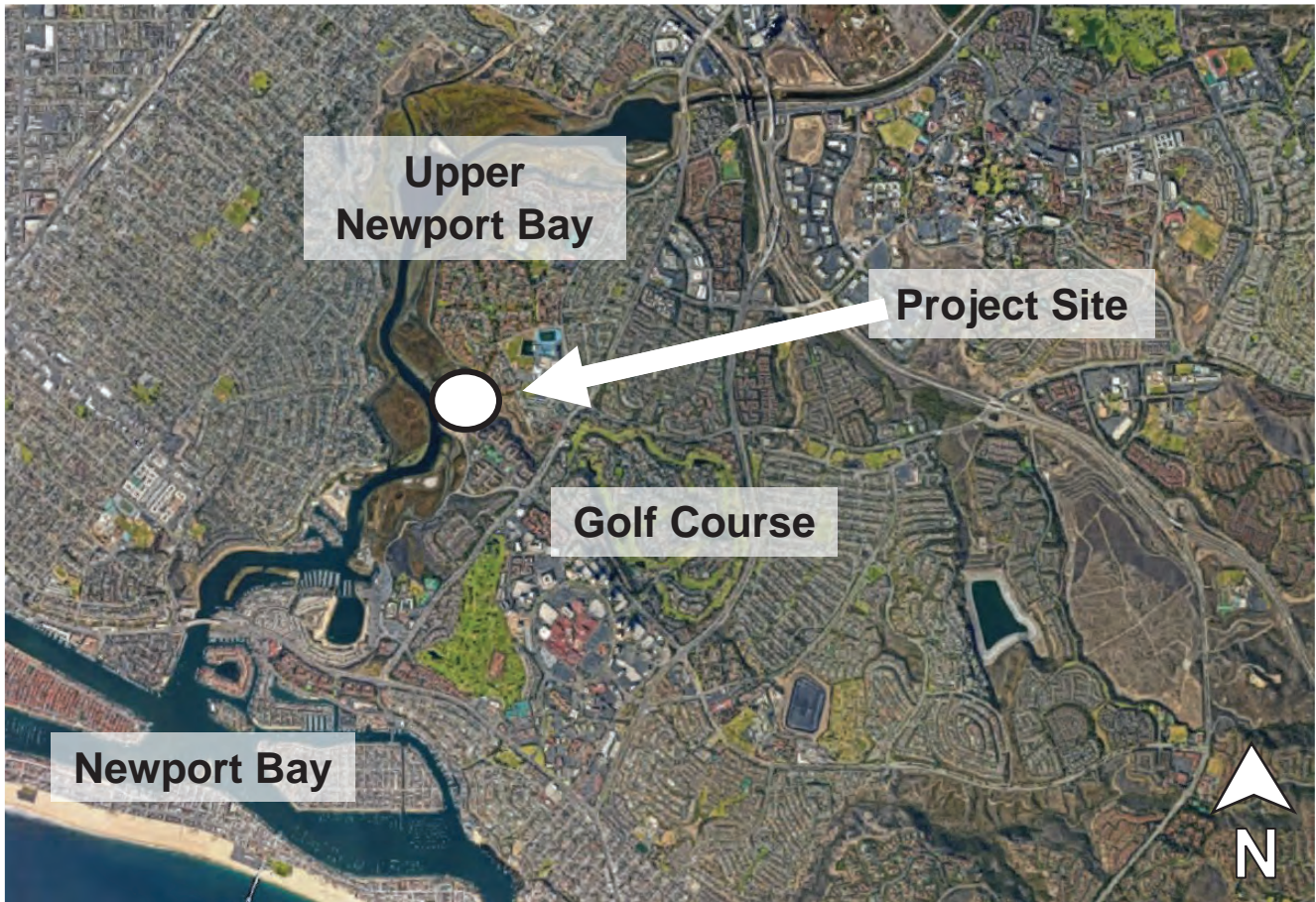
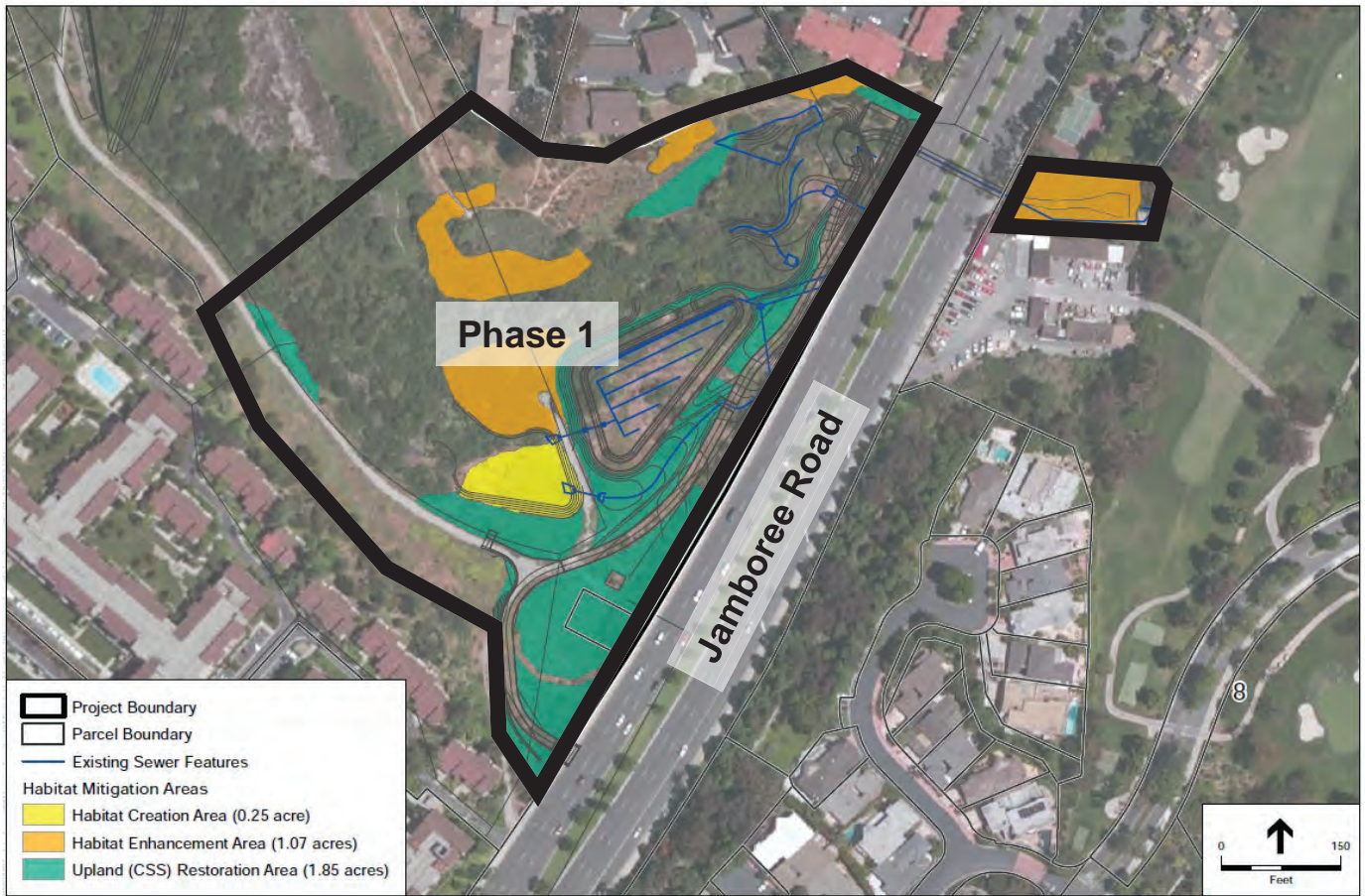


Exhibit 2 – Previous Phases 1 and 2



Big Canyon Restoration – Phase 1



Big Canyon Restoration – Phase 2

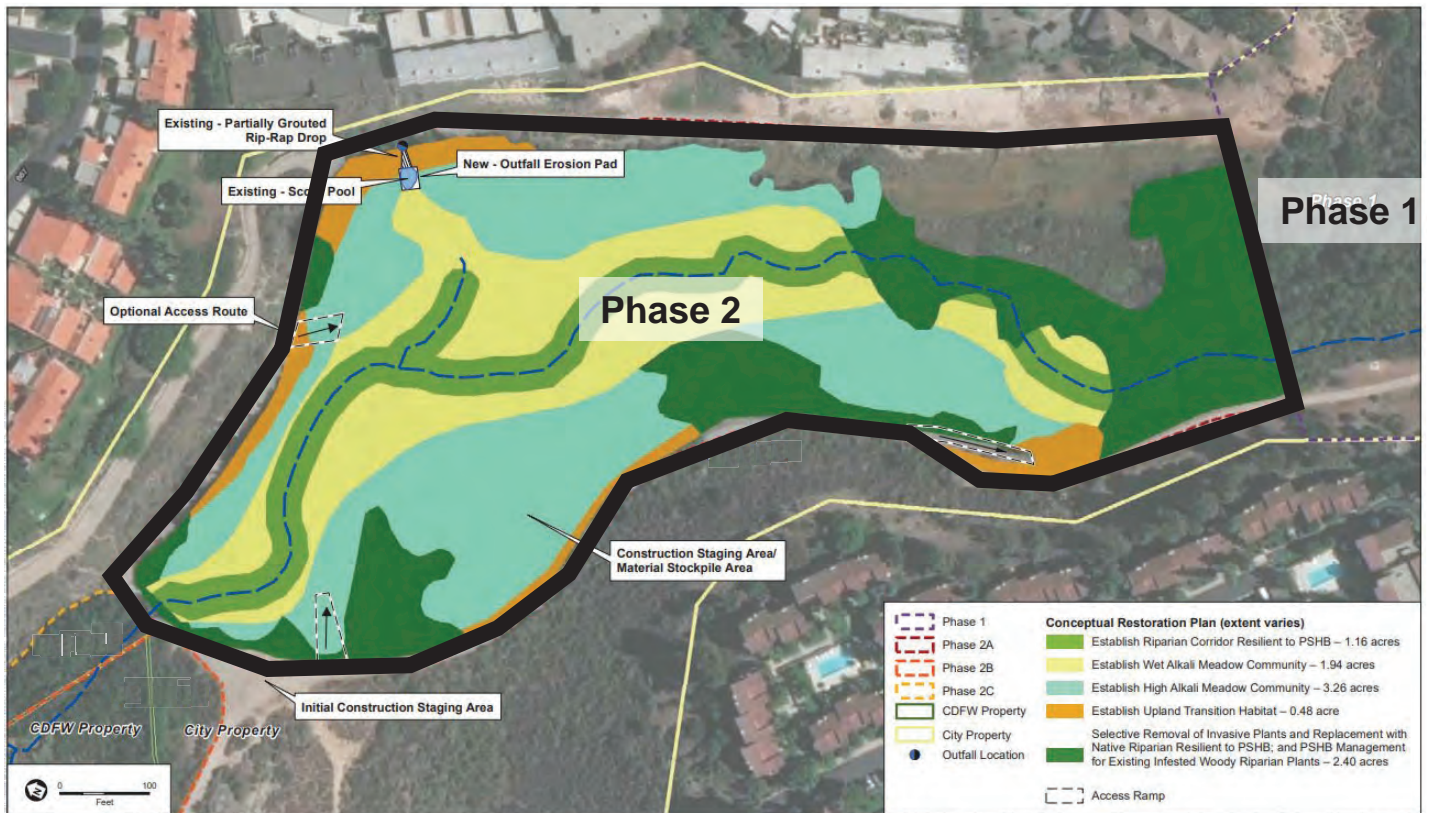


Exhibit 3 – Phase 3 Project Plans

City of Newport Beach, California

Big Canyon Nature Park

Phase 3 Restoration

Newport Beach, California



List of Drawings

CIVIL DRAWINGS

DWG. NO.	TITLE
	COVER & INDEX
G-001	NOTES, ABBREVIATIONS, AND LEGEND
C-001	CIVIL NOTES
CX101	EXISTING CONDITIONS PLAN
CD101	SITE CLEARANCE AND GRUBBING PLAN
CG101	GRADING PLAN
CG102	STORM DRAIN OUTFALL UPGRADES
CG301	CROSS SECTIONS I
CG302	CROSS SECTIONS II
CI101	SWPPP ESCP PHASING PLAN
CI102	SWPPP ESCP PHASING PLAN II
CI103	SWPPP ESCP PHASING PLAN III
CI104	REVEGETATION PLAN
CI501	SWPPP DETAILS
CI502	PLANTING DETAILS
CI801	PLANTING SCHEDULE
IP-01	IRRIGATION PLAN
IP-02	IRRIGATION PLAN
IP-03	IRRIGATION PLAN
IP-04	IRRIGATION PLAN
IP-05	IRRIGATION PLAN
ID-01	IRRIGATION DETAILS
ID-02	IRRIGATION DETAILS
ID-03	IRRIGATION DETAILS

December 2022

BMcD Project No. 133465



LOCATION MAP
NOT TO SCALE



VICINITY MAP
NOT TO SCALE

no.	date	by	ckd	description
1	2/25/22	JL	DP	30% DESIGN
2	12/1/22	JL	DP	80% DESIGN

**PRELIMINARY - NOT
FOR CONSTRUCTION**



Cover & Index



A 2/25/22 JL DP 30% DESIGN
 B 12/1/22 JL DP 80% DESIGN

NOTES:

1. EXISTING TOPOGRAPHY AND SITE FEATURES WITHIN THE PROJECT SURVEY AREA COMPILED USING UNMANNED AERIAL SYSTEMS (UAS) O'DAY CONSULTANTS, INC. PERFORMED ON AUGUST 26, 2021. SPOT ELEVATIONS FROM GROUND SURVEY CONDUCTED BY ESA IN 2010 AND O'DAY CONSULTANTS IN 2021 HAVE BEEN INCORPORATED TO SUPPLEMENT AERIAL SURVEY.
2. TOPOGRAPHY OUTSIDE THE LIMITS OF PROJECT SURVEY AREA BASED ON 2011 USGS DIGITAL ELEVATION MODEL.
3. HORIZONTAL DATUM FOR THE PROJECT IS CALIFORNIA STATE PLANNING COORDINATE SYSTEM ZONE 6 NORTH AMERICAN DATUM 1983 (NAD83).
4. VERTICAL DATUM FOR THE PROJECT IS NORTH AMERICAN VERTICAL DATUM 1988 (NAVD88).

PRELIMINARY - NOT FOR CONSTRUCTION

BURNS & MCDONNELL
 4225 Executive Square, Suite #500
 La Jolla, CA 92037
 858-320-2920

date	DECEMBER 2022	detailed	K DAVIS
designed	J LEE	checked	D POHL

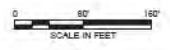


NEWPORT BEACH, CALIFORNIA
 BIG CANYON NATURE PARK
 PHASE 3 RESTORATION

EXISTING CONDITIONS PLAN

project	133405	contract	---
drawing	CX101	rev.	---

EXISTING CONDITIONS PLAN





no.	date	by	okd	description
A	2/26/22	JL	DP	30% DESIGN
B	12/1/22	JL	DP	80% DESIGN

PRELIMINARY - NOT FOR CONSTRUCTION



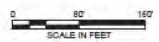
4225 Executive Square, Suite #500
La Jolla, CA 92037
858-320-2920

date	detailed
DECEMBER 2022	K DAVIS
designed	checked
J LEE	D POHL

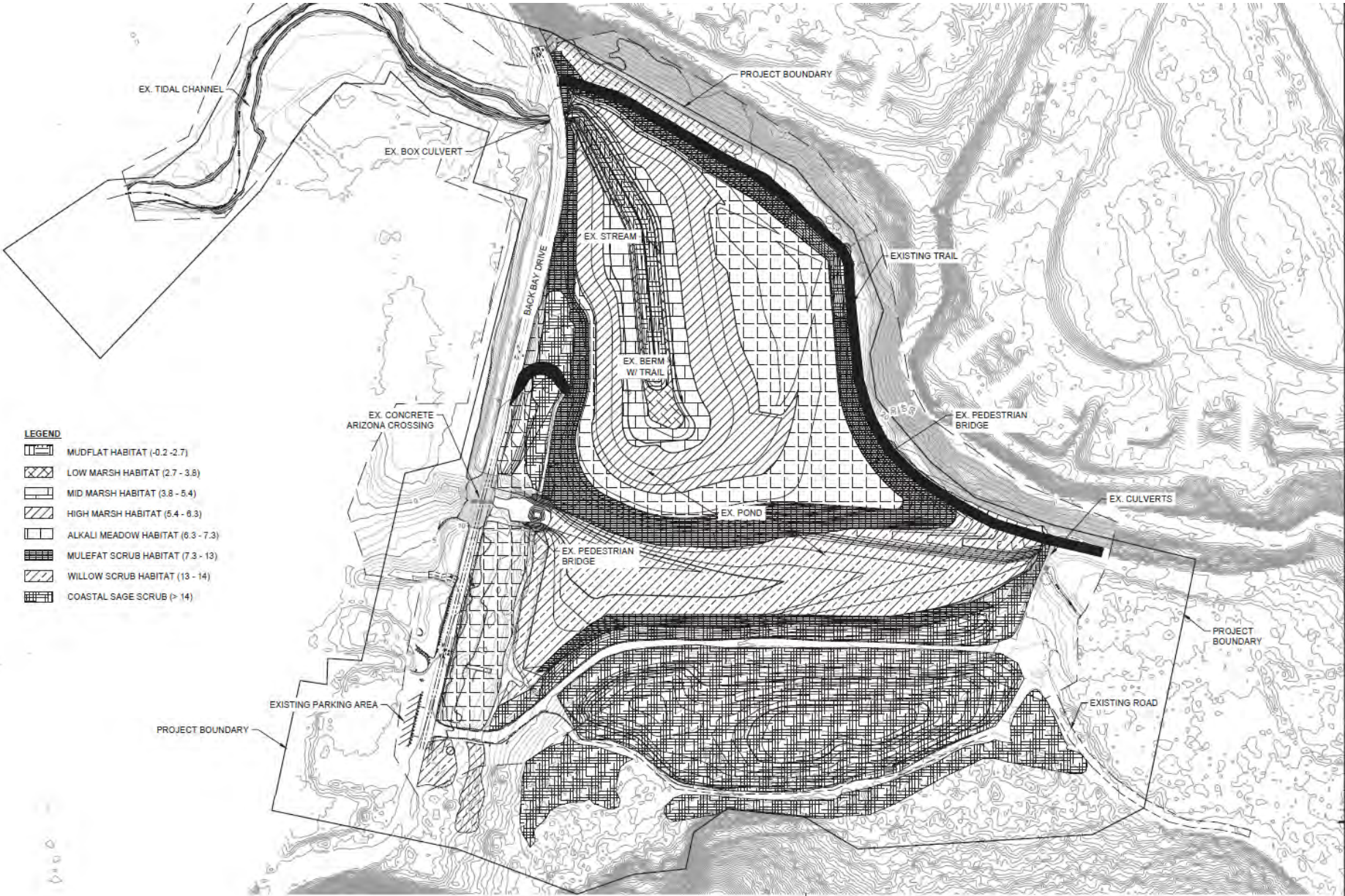


NEWPORT BEACH, CALIFORNIA
BIG CANYON NATURE PARK
PHASE 3 RESTORATION

GRADING PLAN

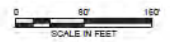


project	contract
133485	
drawing	rev.
CG101	B



- LEGEND**
- MUDFLAT HABITAT (-0.2 - 2.7)
 - LOW MARSH HABITAT (2.7 - 3.8)
 - MID MARSH HABITAT (3.8 - 5.4)
 - HIGH MARSH HABITAT (5.4 - 6.3)
 - ALKALI MEADOW HABITAT (6.3 - 7.3)
 - MULEFAT SCRUB HABITAT (7.3 - 13)
 - WILLOW SCRUB HABITAT (13 - 14)
 - COASTAL SAGE SCRUB (> 14)

REVEGETATION PLAN



PRELIMINARY - NOT FOR CONSTRUCTION



4225 Executive Square, Suite #500
La Jolla, CA 92037
658-320-2920

date	DECEMBER 2022	detailed	K. DAV
designed	J. LEE	checked	D. PO



NEWPORT BEACH, CALIFORNIA
BIG CANYON NATURE PARK
PHASE 3 RESTORATION

REVEGETATION PLAN

project	133485	contract	---
drawing	CI104	revision	---



NEW UPGRADED ACCESS WITH CULVERT

EDUCATIONAL SIGNAGE

TEMPORARY ACCESS

EX. BOX CULVERT

EDUCATIONAL SIGNAGE

TIDAL CHANNEL - FOCUSED DREDGING TO INCREASE TIDAL FLOW

UPGRADED EXISTING TRAILS FOR CONSTRUCTION, OPERATIONS, AND MAINTENANCE ROADS

NEW ACCESS ROAD OFF BACK BAY DRIVE FOR CONSTRUCTION, OPERATIONS, AND MAINTENANCE

EXISTING TRAIL BRIDGE - WILL BE REMOVED FOR SALT MARSH RESTORATION

EXISTING LEVEE NOTCHED TO PREVENT PONDING & MOSQUITO BREEDING HABITAT

NEW ROAD FOR CONSTRUCTION, OPERATIONS, AND MAINTENANCE

BACK BAY DRIVE

EX. CULVERTS

MAINTANTN EX. FOOT BRIDGE OVER SPILLWAY

NEW TIDAL WETLAND

EDUCATIONAL SIGNAGE

EDUCATIONAL SIGNAGE

MAINTAIN EX. TRAIL

UPGRADED EXISTING TRAILS FOR CONSTRUCTION, OPERATIONS, AND MAINTENANCE ROADS

- Project Boundary
- Habitat Enhancement
- Soil Placement Area and Coastal Sage Scrub Rehabilitation
- Temporary Access
- Existing Trail
- Realigned Big Canyon Creek
- Habitat**
- Alkali Meadow
- High Salt Marsh
- High Salt Marsh (Temporary Impact)
- Intertidal Mudflat
- Low Salt Marsh
- Mid Salt Marsh
- Mulefat Scrub
- Restored Riparian Corridor Connects with Phases 1 & 2

Exhibit 4 – Site Photos



Spatial map of photos taken by Commission staff on July 21, 2023.



Figure 1. The 4-acre Upper Newport Bay channel proposed for dredging.

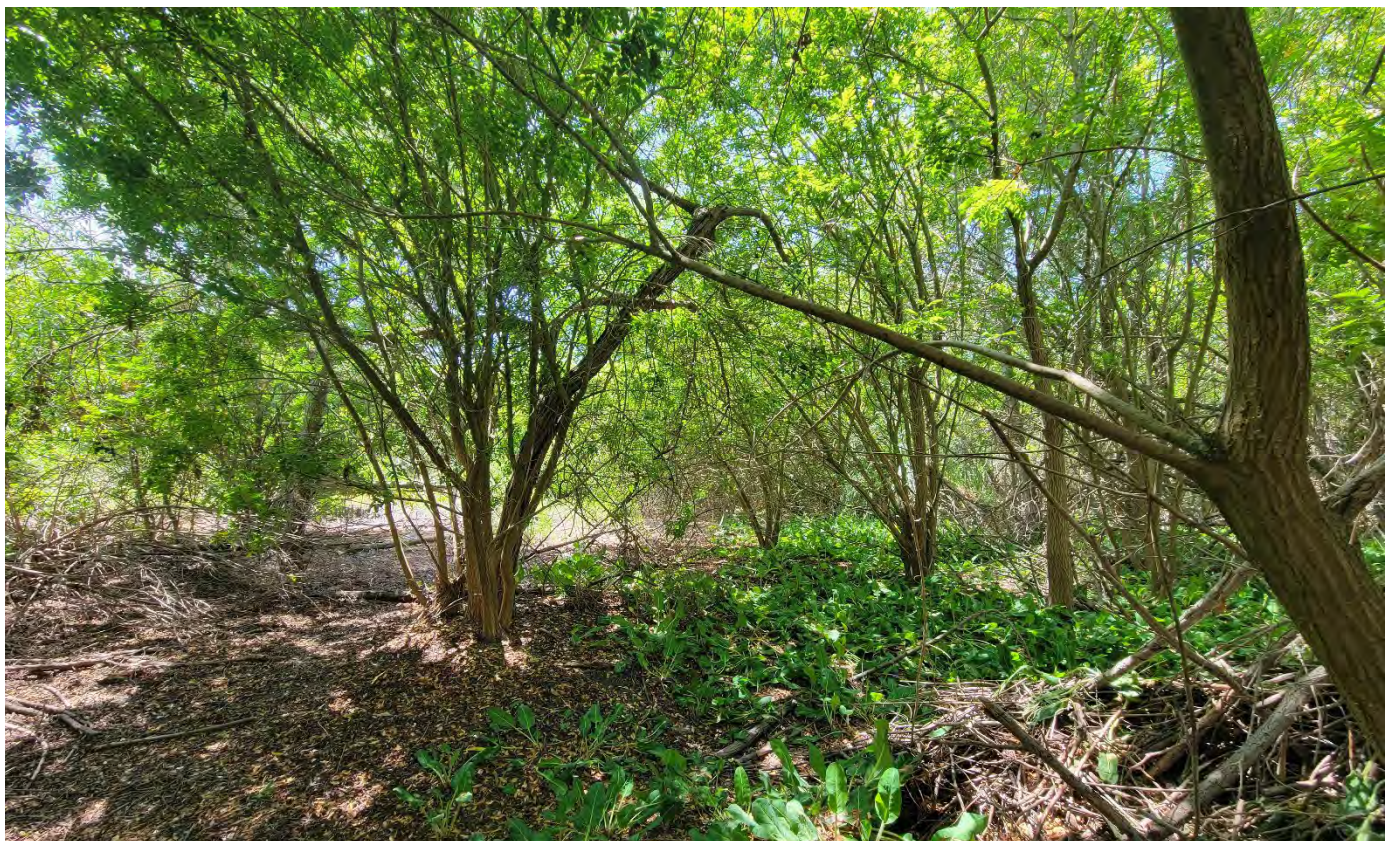


Figure 2. A portion of the 7-acre northern tree grove.



Figure 3. A portion of the 4-acre freshwater marsh.



Figure 4. An artificial pond in the 4-acre freshwater marsh.



Figure 5. A portion of the 10-acre southern uplands.