

CALIFORNIA COASTAL COMMISSION

NORTH COAST DISTRICT
1385 8TH STREET, SUITE 130
ARCATA, CA 95521
PHONE: (707) 826-8950
WWW.COASTAL.CA.GOV



Th2

Prepared May 2, 2024 for the May 9, 2024 Meeting

TO: COASTAL COMMISSIONERS AND INTERESTED PERSONS

FROM: Kate Hucklebridge, Executive Director
North Coast District Staff

SUBJECT: Field Trip Itinerary and Maps for Thursday, May 9, 2024

The Commission will take a field trip on the morning of Thursday, May 9, 2024, after the Commission roll call. Members of the public are invited to attend by following in their private vehicles and joining the Commission at designated stops. For more information, please contact the Commission's North Coast District office by email or phone at NorthCoast@coastal.ca.gov or (707) 826-8950.

This itinerary is subject to change, depending on weather and other logistics. Please note: walking shoes, jacket, water bottle, sunscreen, hat, etc. are recommended for outdoor tours. Some stops may involve walking short distances over uneven terrain. Restroom facilities will not be available at every stop.

ALL TIMES ARE APPROXIMATE. See below for driving directions and maps.

Stop #	Depart	Arrive	Location	Notes
	~9:15 am (after roll call)		Sovereign Nation of the Elk Valley Rancheria 2332 Howland Hill Rd, Crescent City	--Departure time will be after Commission roll call
1	9:50 am	9:30 am	Brother Jonathan Park Cemetery parking area, west side of S. Pebble Beach Dr. between 8 th & 9 th Streets, Crescent City	--We will walk along S. Pebble Beach Dr. one block to view emergency road closure site and hear from City staff on their stabilization plans.

Stop #	Depart	Arrive	Location	Notes
2	10:45 am	10:00 am	Point Saint George parking lot	--Background and updates from steering committee partners for planned trail and parking lot improvements and cultural resources protection
3	11:15 am	11:10 am	North end of Tell Blvd. near Kellogg Rd. – Entrance to Pacific Shores subdivision	--Rendevous briefly to highlight subdivision history and issues before continuing the short distance to Stop 4
4	11:45 am	11:25 am	Southern end of Tell Blvd. at Lake Tolowa/Lake Earl view point	--Background on public lands management planning issues, restoration efforts, and other issues
5	1:00 pm	12:15 pm	Arrive at Beachfront Park; park along Howe Dr. at southwestern end of park, near the cluster of picnic tables and the marine mammal center	--Time-permitting, before lunch, City staff may lead a walk along the beach below the the revetment (and out of the wind) from the picnic table area to the coastal access staircase, then back along the sidewalk above the revetment. The field trip ends when lunch for Commissioners is served. In inclement weather, lunch for Commissioners may be served in the cultural center at the opposite end of the park.
<i>Tour ends at Stop 5. After tour, Commissioners to eat lunch at picnic tables or, depending on weather, in the Cultural Center at the opposite end of the park before returning to meeting venue at approximately 1:00 pm. The regular agenda will resume at 1:30 pm at Sovereign Nation of the Elk Valley Rancheria, 2332 Howland Hill Rd, Crescent City.</i>				

DRIVING DIRECTIONS

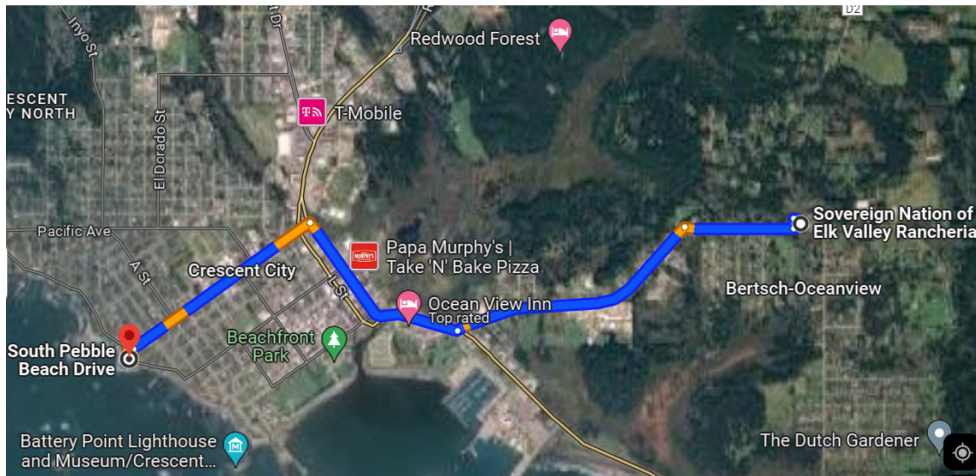
(all driving distances and travel times are approximate)

To STOP 1:

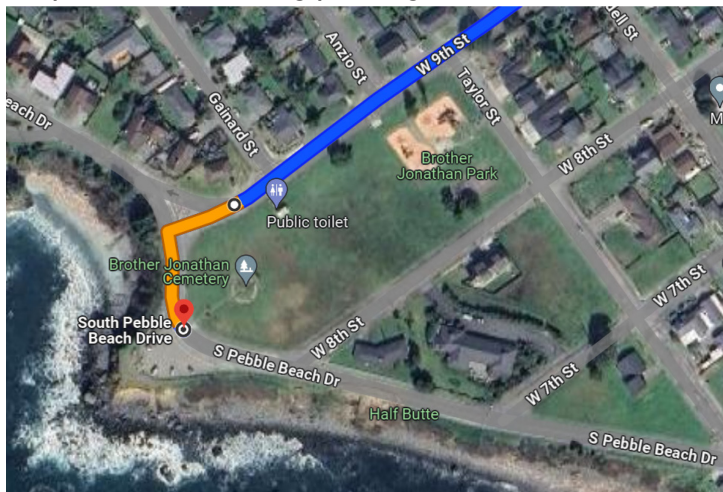
Sovereign Nation of Elk Valley Rancheria to Parking area overlook near Brother Jonathan Cemetery (~10 minute drive)

- Head west on Howland Hill Rd. for 0.4-mile
- Turn left (south) onto Elk Valley Rd. for 1.1 mile
- Turn right (north) onto US-101-North for 0.8-mile
- Turn left (west) onto 9th St. for 0.9-mile
- Turn left (south) onto S. Pebble Beach Dr.
- Park in parking area on the right (west side of road across from Brother Jonathan Cemetery)

Travel route from Meeting Venue to Stop 1:



Stop 1 detail showing parking area on S. Pebble Beach Dr. between W. 8th & W. 9th St.

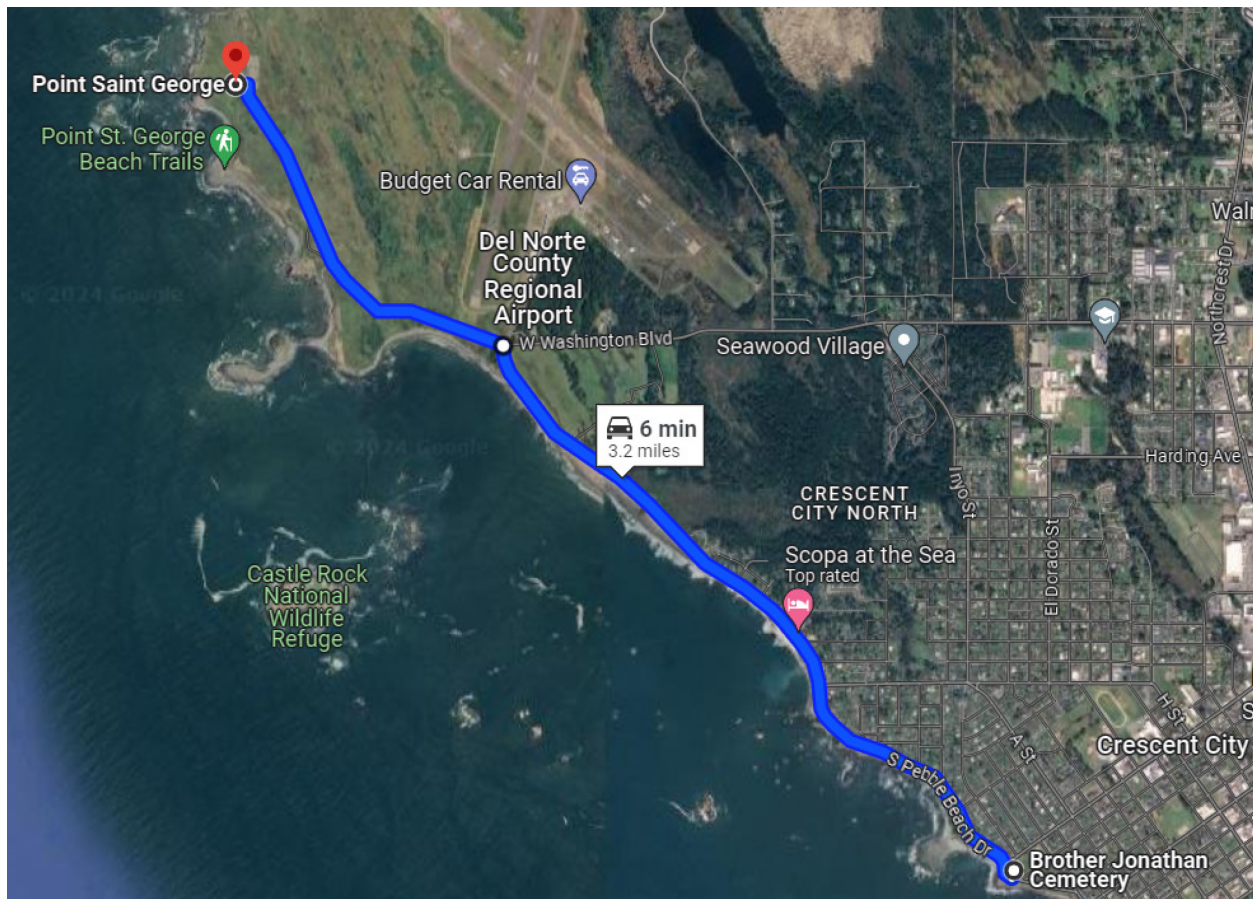


To STOP 2:

S. Pebble Beach Dr. (Brother Jonathan Cemetery parking area) to Point Saint George parking area (~7 minute drive)

- Head west/north on S. Pebble Beach Dr. towards 9th St.; continue for 2.1 miles
- Continue onto N. Pebble Beach Dr. for 1.2 miles (past Washington Blvd, past Airport Rd.)
- Park in parking lot at Point Saint George

Travel route from Stop 1 to Stop 2 (Point St. George parking lot)



To STOP 3:

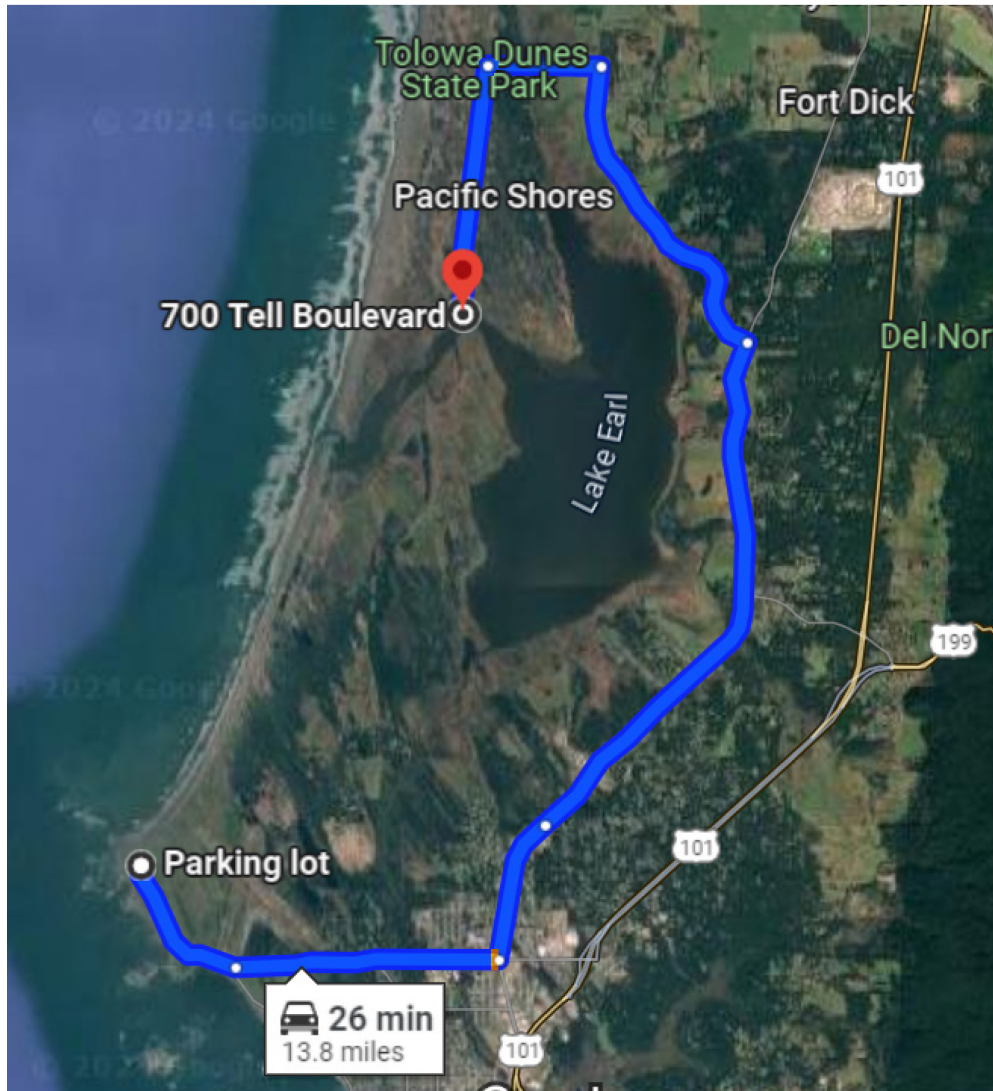
Point Saint George parking lot to entrance to Pacific Shores (Tell Blvd. near its intersection with Kellogg Rd.) (~20 minute drive)

- Head south on N. Pebble Beach Dr. towards Crescent City for 1.2 miles
- Continue straight (east) onto W. Washington Blvd. for 2 miles
- Turn left (north) onto Northcrest Dr. for 1.1 miles

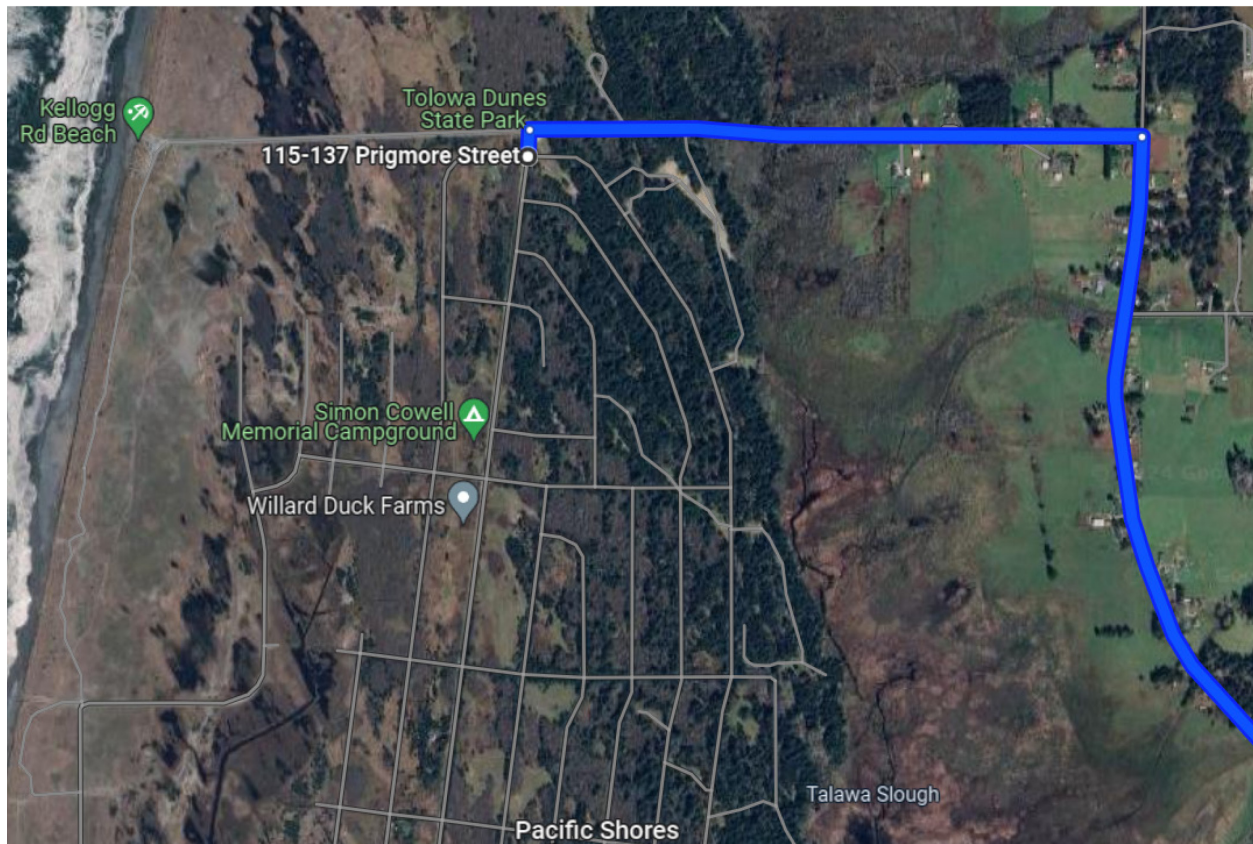
- Continue straight (north) onto Lake Earl Dr. for 4.3 miles
- Turn left onto Lower Lake Road for 2.6 miles
- Turn left onto Kellogg Rd. for 0.8-mile
- Turn left onto Tell Blvd. to rendezvous point

Note – after turning onto Tell Blvd. off of Kellogg Rd., please pull over along Tell Blvd., which is a double road. There is room in the road median or along the roadside to pull over. We will congregate here initially before driving the short distance to Stop 4.

Travel route from Stop 2 (Point St. George) to Stop 3 (Pacific Shores)



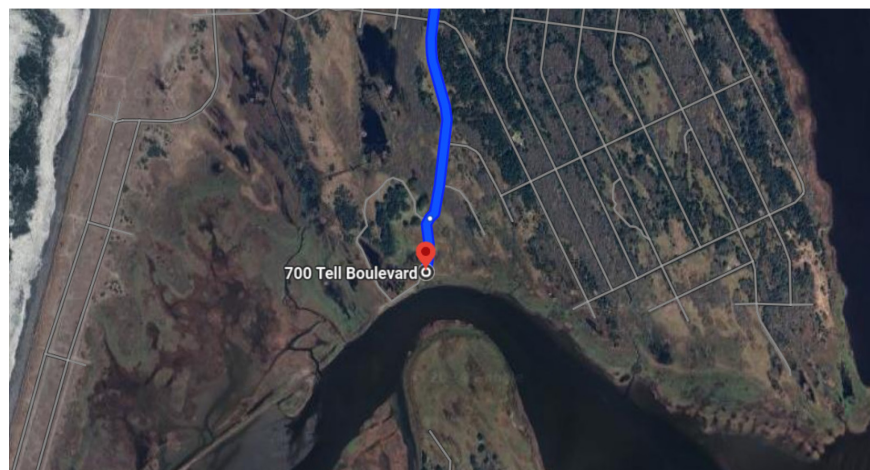
Detail of northern end of route to Stop 3 – the rendezvous point at the entrance to Pacific Shores off of Kellogg Rd. after turning onto Tell Blvd. near Prigmore St.



To STOP 4:

Tell Blvd. near entrance to Pacific Shores to south end of Tell Blvd. (~5 minute drive)

- Travel south along Tell Blvd. through Pacific Shores for ~1.8 miles. Park near the end of the road to overlook the lakes:

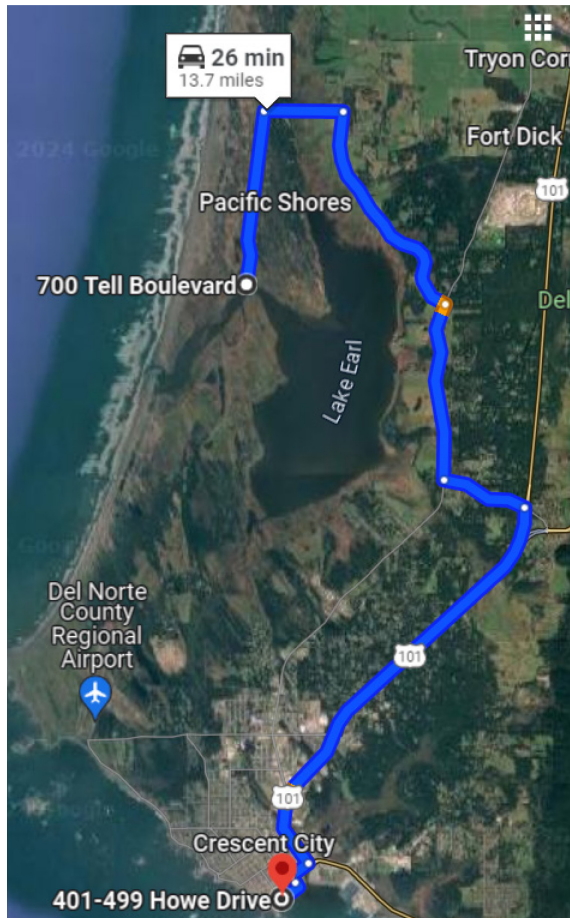


To STOP 5:

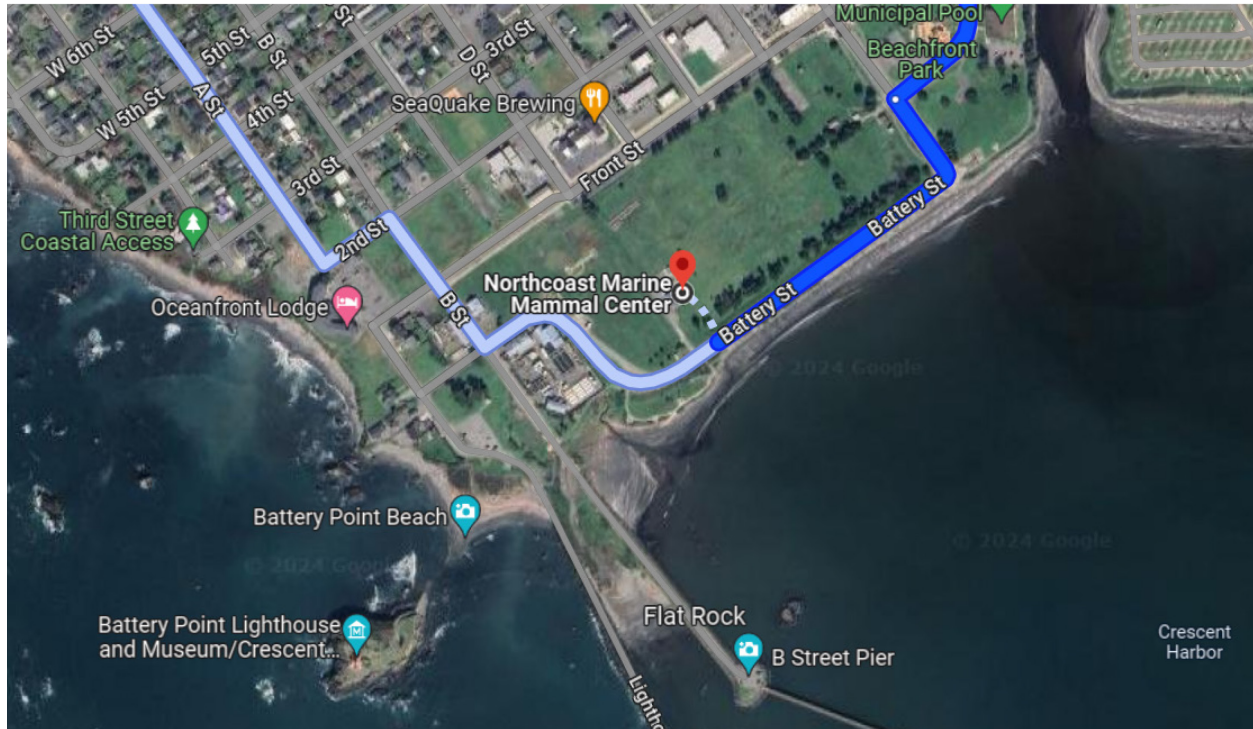
Pacific Shores to Beachfront Park in Crescent City (~26 minute drive)

- Return northbound on Tell Blvd. for ~1.9 miles
- Turn right (east) on Kellogg Rd. for 0.8-mile
- Turn right (south) onto Lower Lake Rd. for 2.6 miles
- Turn right onto Lake Earl Dr. for 1.9 miles
- Turn left (east) onto Elk Valley Cross Rd. for 0.9-mile
- Turn right onto US-101 South for 4.9 miles
- Turn right onto Front St. for 0.1-mile
- Turn left onto Play St. and continue onto Howe Dr./Battery St. for 0.3-mile

Travel route from Stop 4 (Tell Blvd/Pacific Shores) to Stop 5 (Beachfront Park)



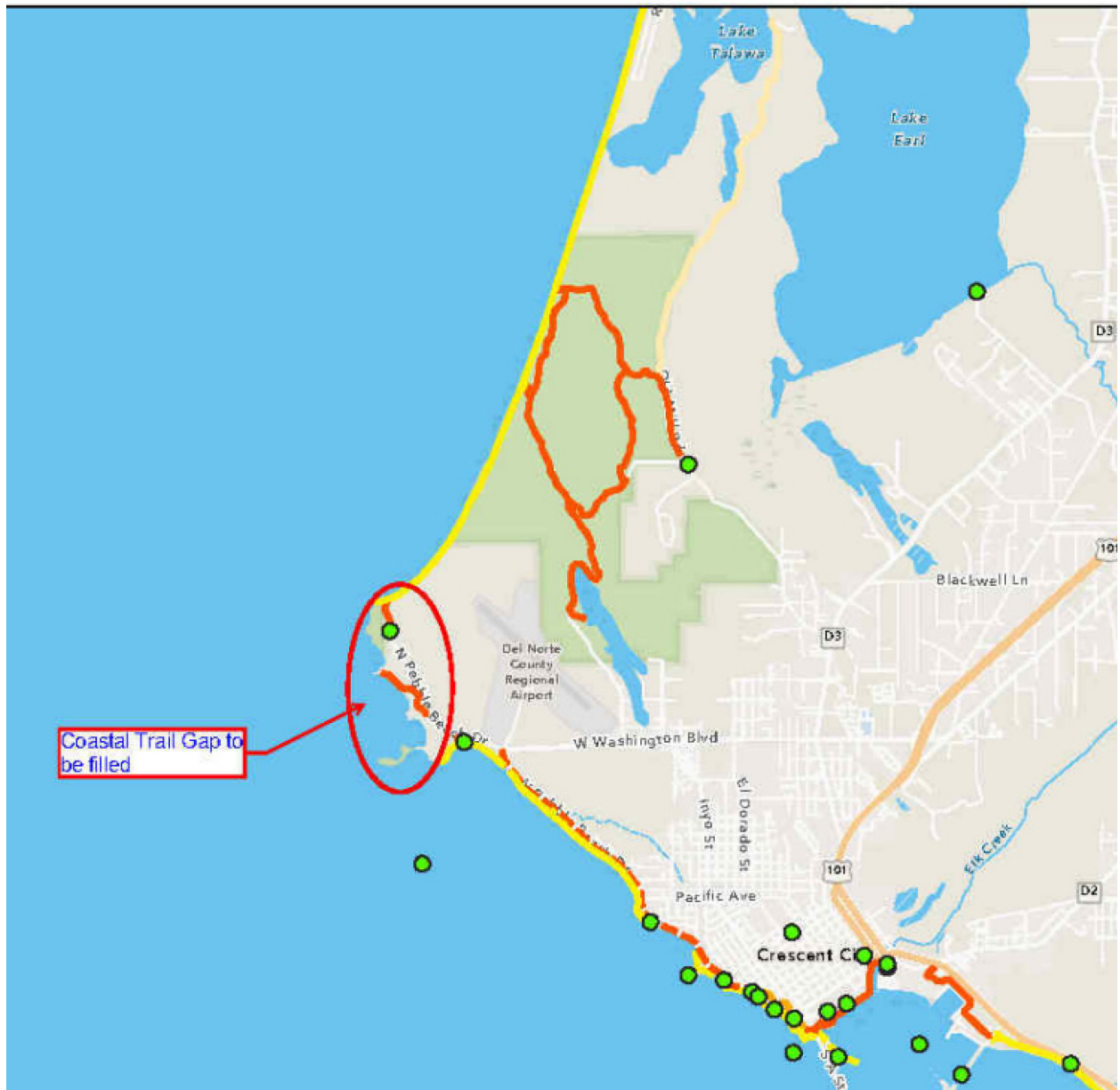
Detail of southern end of route to Stop 5 – park along Howe Dr./Battery St. near the Northcoast Marine Mammal Center. Time-permitting, City staff may lead a walk along the beach below the the revetment (from approximately the picnic table area to the coastal access staircase) then back along the sidewalk above the revetment. The field trip will end at approximately 12:15-12:30 or when lunch for Commissioners is served.



PROJECT MAPS

Maps for Stop 2 – Point Saint George Coastal Access Improvements

Point Saint George Coastal Trail



Maps for Stops 3-4 – Pacific Shores and Surrounding Public Lands

