

CALIFORNIA COASTAL COMMISSION

SOUTH CENTRAL COAST DISTRICT OFFICE
89 SOUTH CALIFORNIA STREET, SUITE 200
VENTURA, CA 93001-2801
(805) 585-1800



W14a-b

4-23-0791 and 4-25-0159

(City of Ventura Public Works Department)

May 1, 2026

EXHIBITS

Exhibit 1 – Vicinity Map 2

Exhibit 2 – Project Components Map 3

Exhibit 3 – G-4-20-0004 Revetment Plan and As-Built Photos 4

Exhibit 4 – G-4-24-0064 Oak St Drainage Outfall Plan..... 8

Exhibit 5 – Existing Stairway Diagram and Photo 9

Exhibit 6 – Proposed Stairway Design 11

Exhibit 7 – Proposed Revetment Additions Plans 13

Exhibit 8 – Alcoves Maintenance Plans 18

Exhibit 9 – Staging and Access Plan..... 20

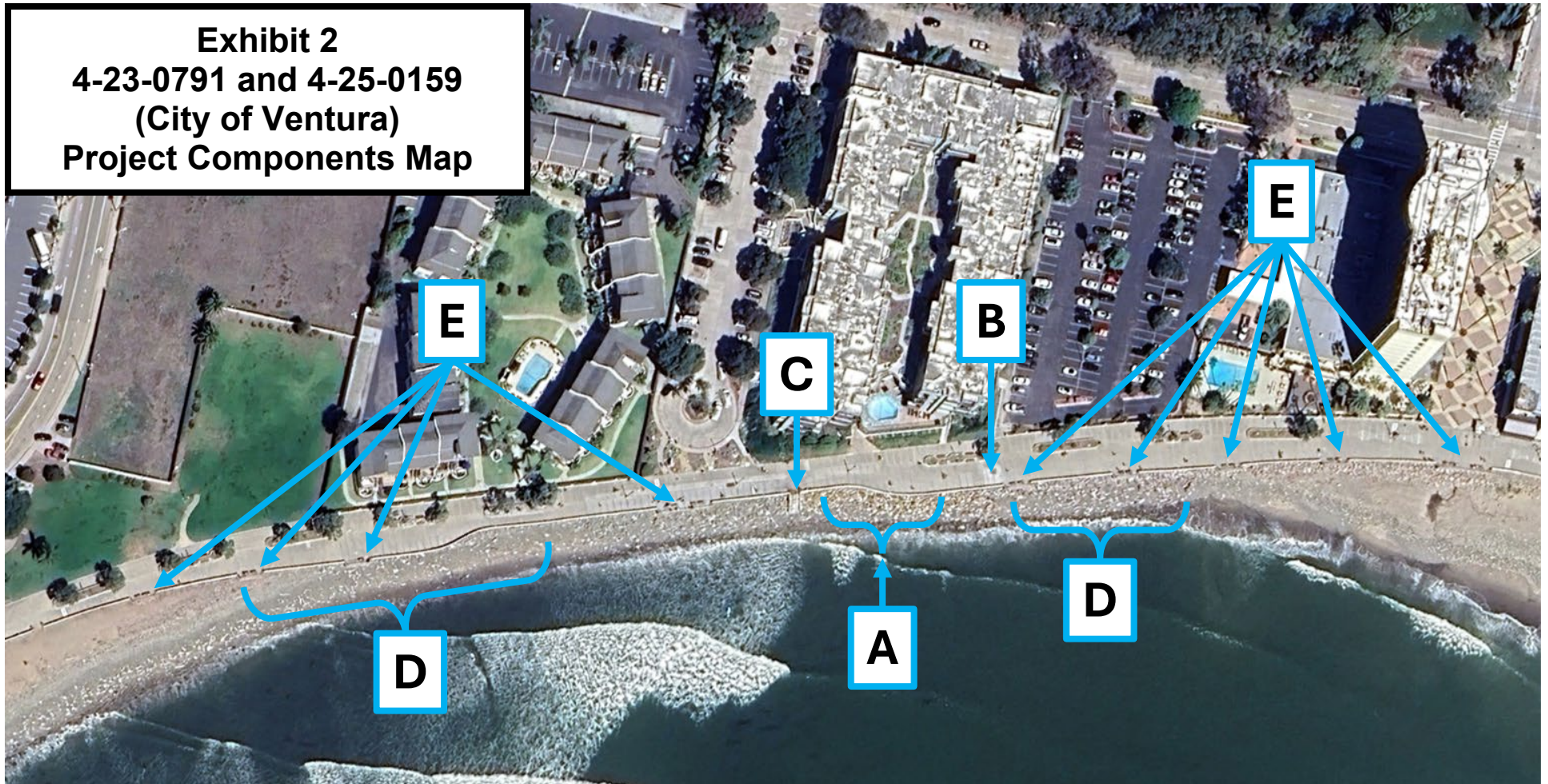
Exhibit 10 – Revised Stairway Illustration..... 21

Exhibit 1
4-23-0791 and 4-25-0159
(City of Ventura)
Vicinity Map

Project Location



Exhibit 2
4-23-0791 and 4-25-0159
(City of Ventura)
Project Components Map



Key

A Retain as-built concrete and rock (G-4-24-0004)

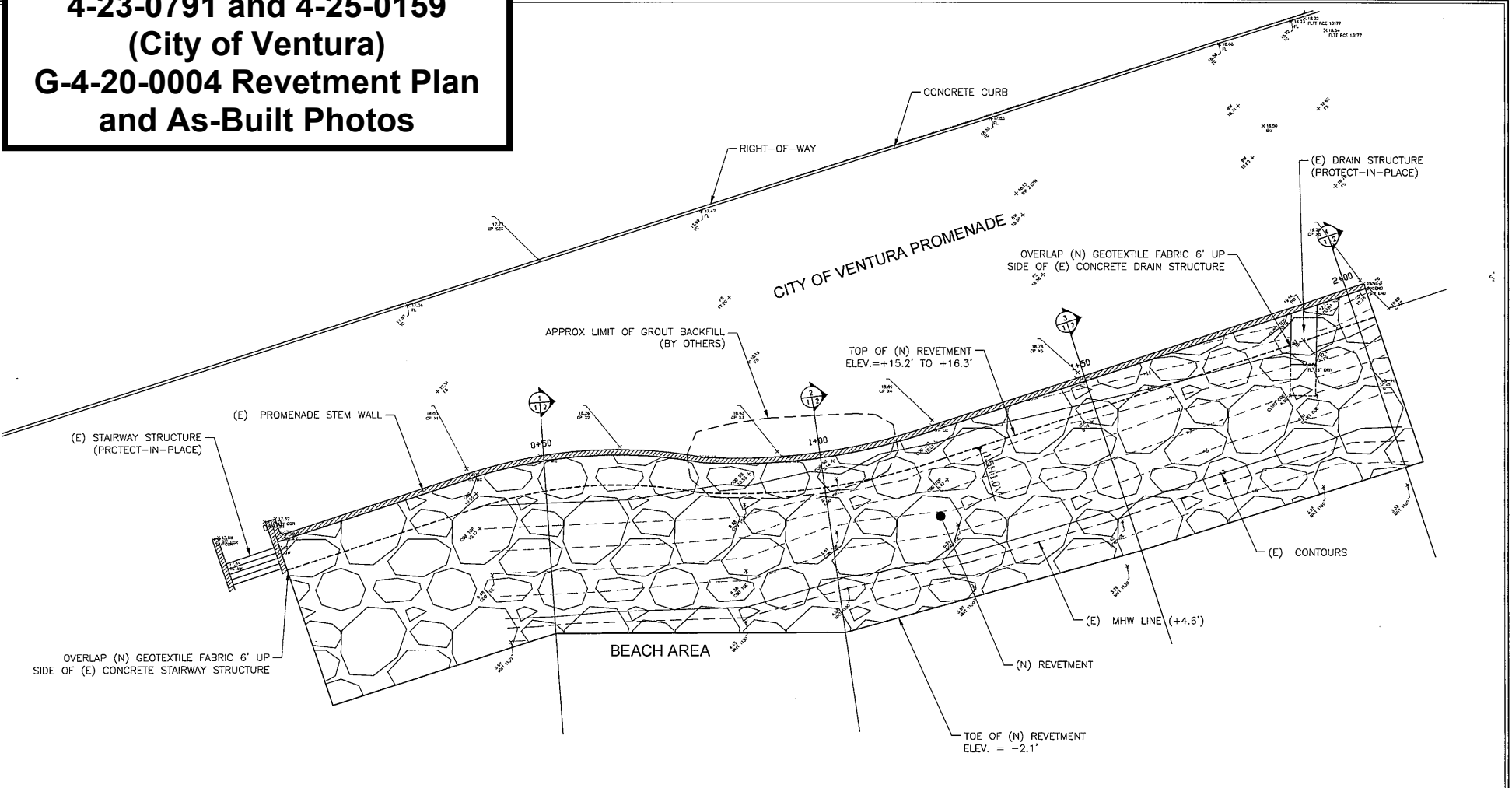
B Retain as-built drainage repairs (G-4-24-0064)

C Replace existing stairway

D Add rock to existing revetment

E Maintain public viewing alcoves

Exhibit 3
4-23-0791 and 4-25-0159
(City of Ventura)
G-4-20-0004 Revetment Plan
and As-Built Photos



NOTES

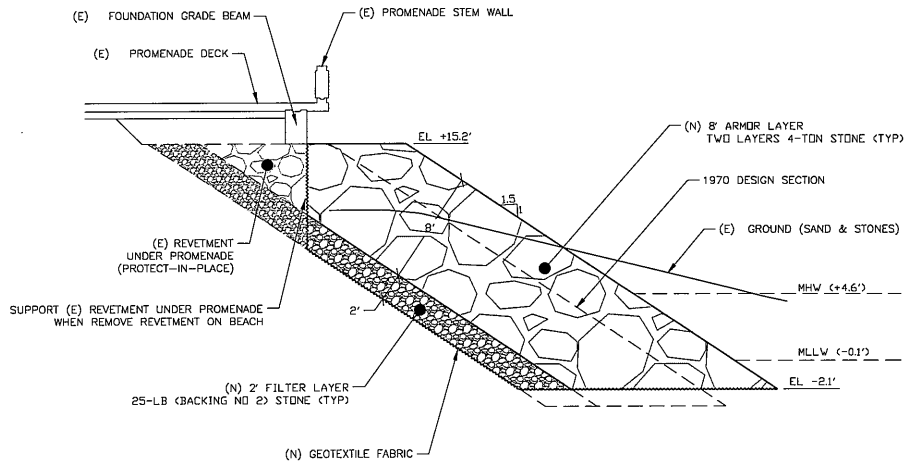
1. HORIZONTAL DATUM: NAD83 CALIFORNIA STATE PLANE, ZONE V, US FOOT
2. VERTICAL DATUM: NAVD 88, US FOOT



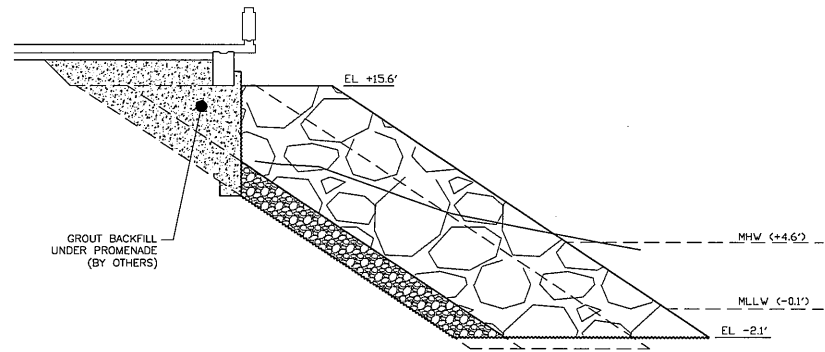
NOBLE CONSULTANTS **GEC**
 NOBLE CONSULTANTS, INC.
 2201 BILPONT DRIVE, SUITE 830
 IRVINE, CA 92612
 949-752-1339
 949-752-8381 FAX

CITY OF VENTURA			VENTURA PROMENADE REVETMENT REVETMENT PLAN	
NO.	DATE	REVISION	DRAFTED BY: VQ	APPROVED DATE:
			DESIGNED BY: VQ	
			CHECKED BY: RNN	
			PROJECT NUMBER:	

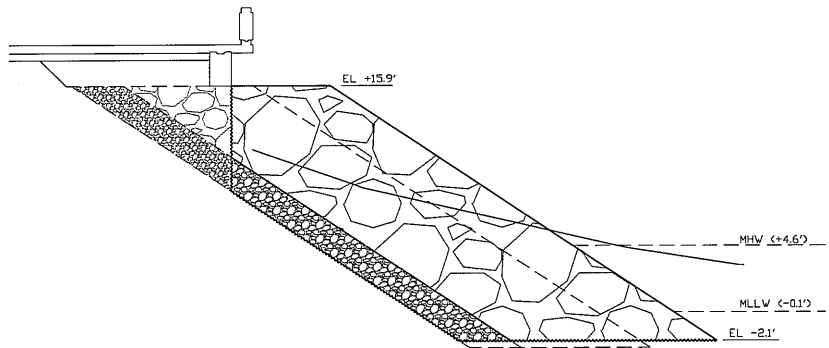
SHEET 1 OF 2
 LHM NO. NCI 605-48
 SCALE AS NOTED
 DATE 1/20/2020



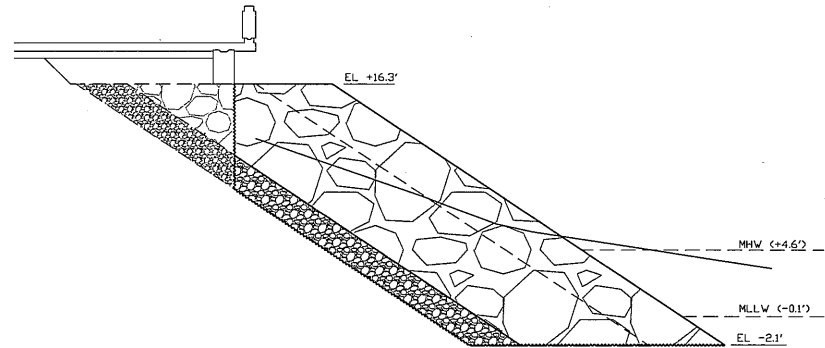
1
1 2 REVETMENT SECTION @ STA 0+50
SCALE: 1" = 4'



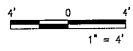
2
1 2 REVETMENT SECTION @ STA 1+00
SCALE: 1" = 4'



3
1 2 REVETMENT SECTION @ STA 1+50
SCALE: 1" = 4'



4
1 2 REVETMENT SECTION @ STA 2+00
SCALE: 1" = 4'



NOBLE CONSULTANTS **GEC**
 NOBLE CONSULTANTS, INC.
 2201 DUPONT DRIVE, SUITE 830
 IRVING, CA 92612
 949-752-1530
 949-752-8360 (FAX)

NO.	DATE	REVISION

DRAFTED BY: VJD
 DESIGNED BY: VJD
 CHECKED BY: RYN
 APPROVED DATE: _____
 PROJECT NUMBER: _____

CITY OF VENTURA
VENTURA PROMENADE REVETMENT
 REVETMENT SECTIONS

SHEET 2 OF 2
 JOB NO. MCL 692-4B
 SCALE AS NOTED
 DATE 1/26/2009

PHOTO LOG – Before and After Site Photographs: 2020 Ventura Promenade Revetment Repairs

BEFORE CONSTRUCTION

Photo 1 – Existing Revetment Facing West Prior to Construction (May 4, 2020)



Photo 2 – Undermining of Promenade Foundation Prior to Pouring of Flowable Cementitious Fill (May 6, 2020)



AFTER CONSTRUCTION

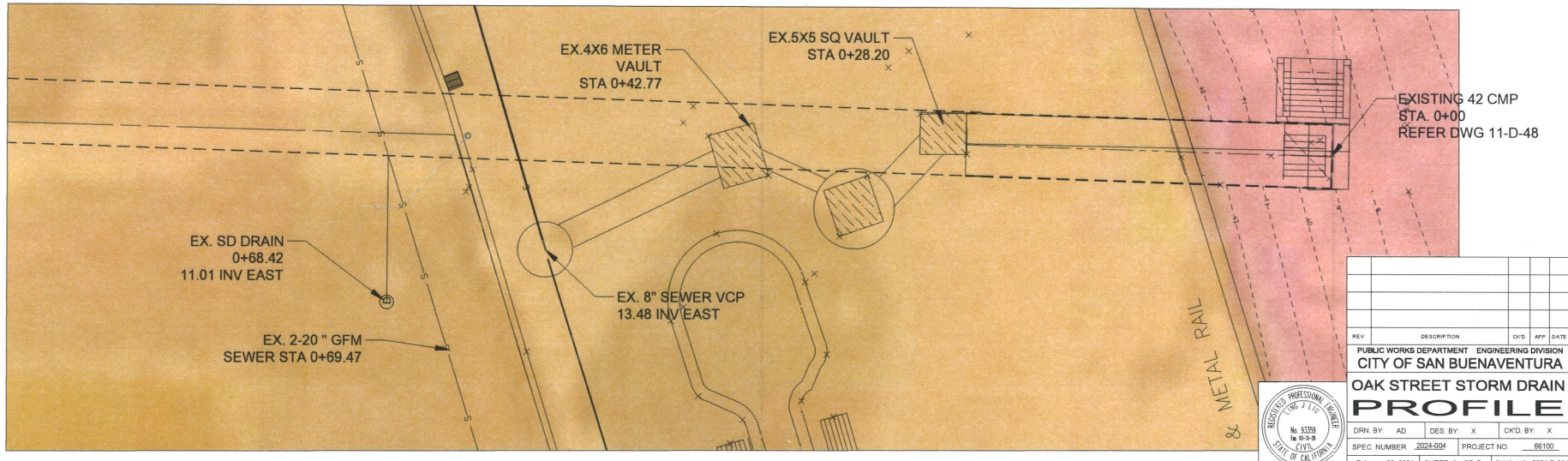
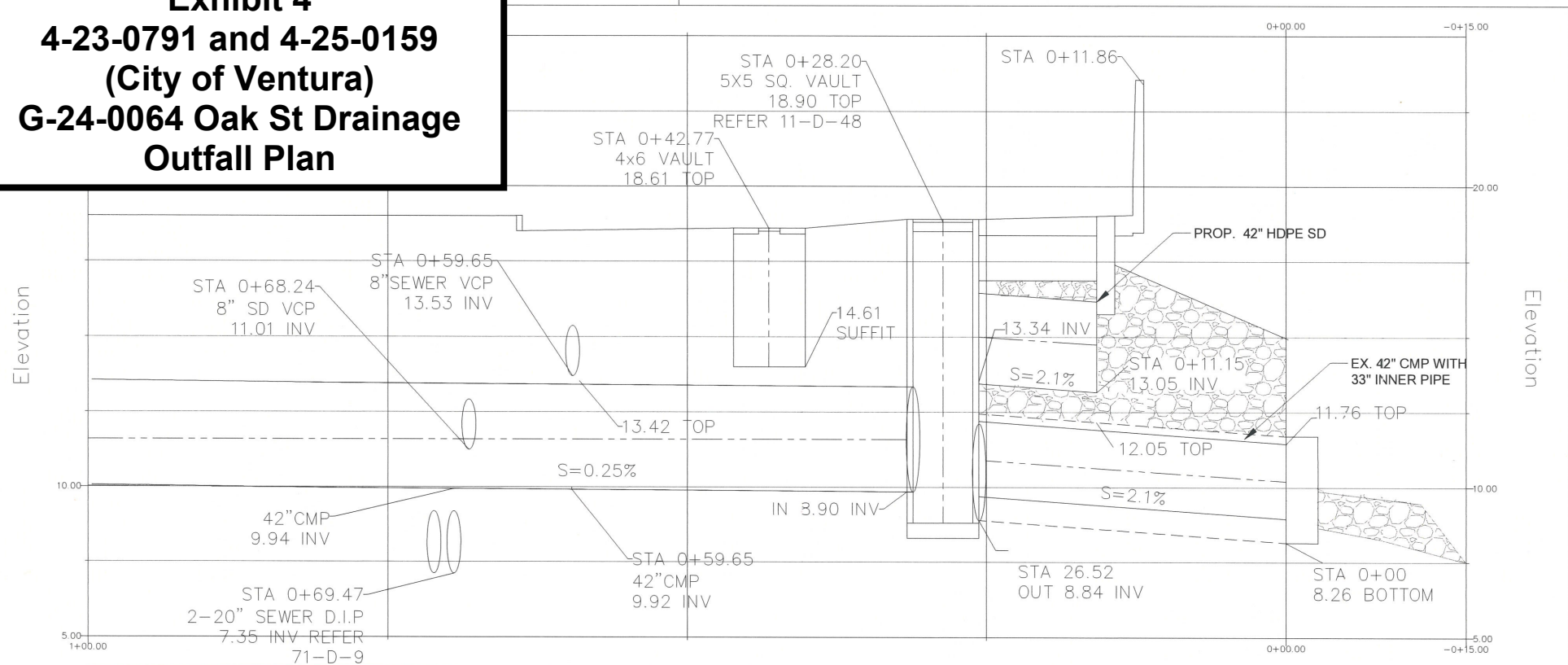
**Photo 3 –
Project Area
Looking West
Following
Completion of
Riprap
Installation
Activities
(May 7, 2020)**



**Photo 4 –
Photo of
Project Area
Looking East
Following
Completion of
Project
Activities
(May 8, 2020)**



Exhibit 4
4-23-0791 and 4-25-0159
(City of Ventura)
G-24-0064 Oak St Drainage
Outfall Plan



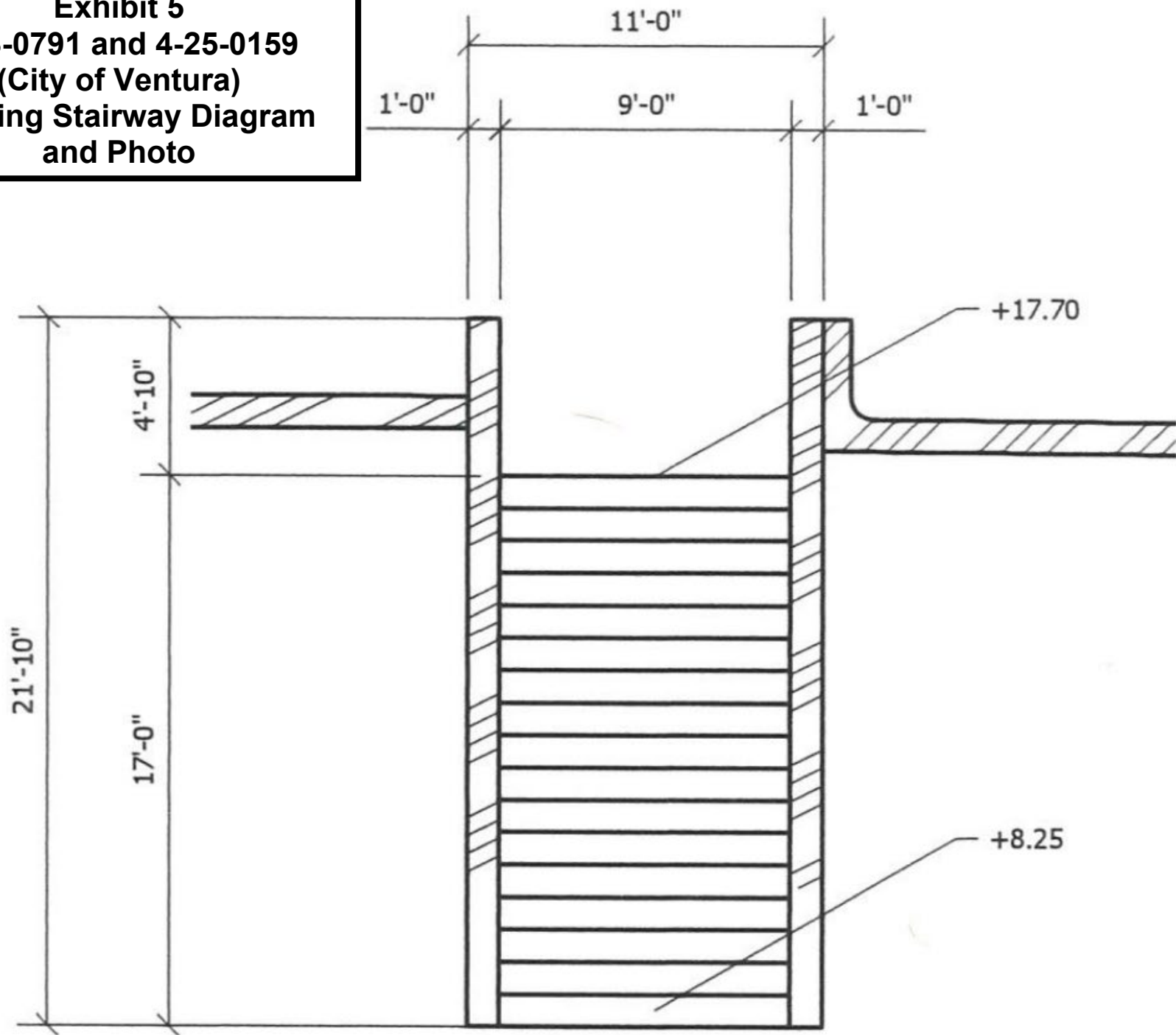
REV	DESCRIPTION	CKD	APP	DATE

PUBLIC WORKS DEPARTMENT ENGINEERING DIVISION
CITY OF SAN BUENAVENTURA
OAK STREET STORM DRAIN PROFILE

DRN. BY: AD DES. BY: X CKD. BY: X
SPEC NUMBER: 2024-004 PROJECT NO: 66100
February 28, 2024 SHEET 3 OF 7 DWG. NO. 2024-D-004

C:\Users\ad\OneDrive - City of Ventura\Desktop\Caltrans Storm\050623_Oak St.dwg
02/28/24

Exhibit 5
4-23-0791 and 4-25-0159
(City of Ventura)
Existing Stairway Diagram
and Photo





Existing Staircase Photo 11.1.2022

Modified concrete shear wall staircase plan

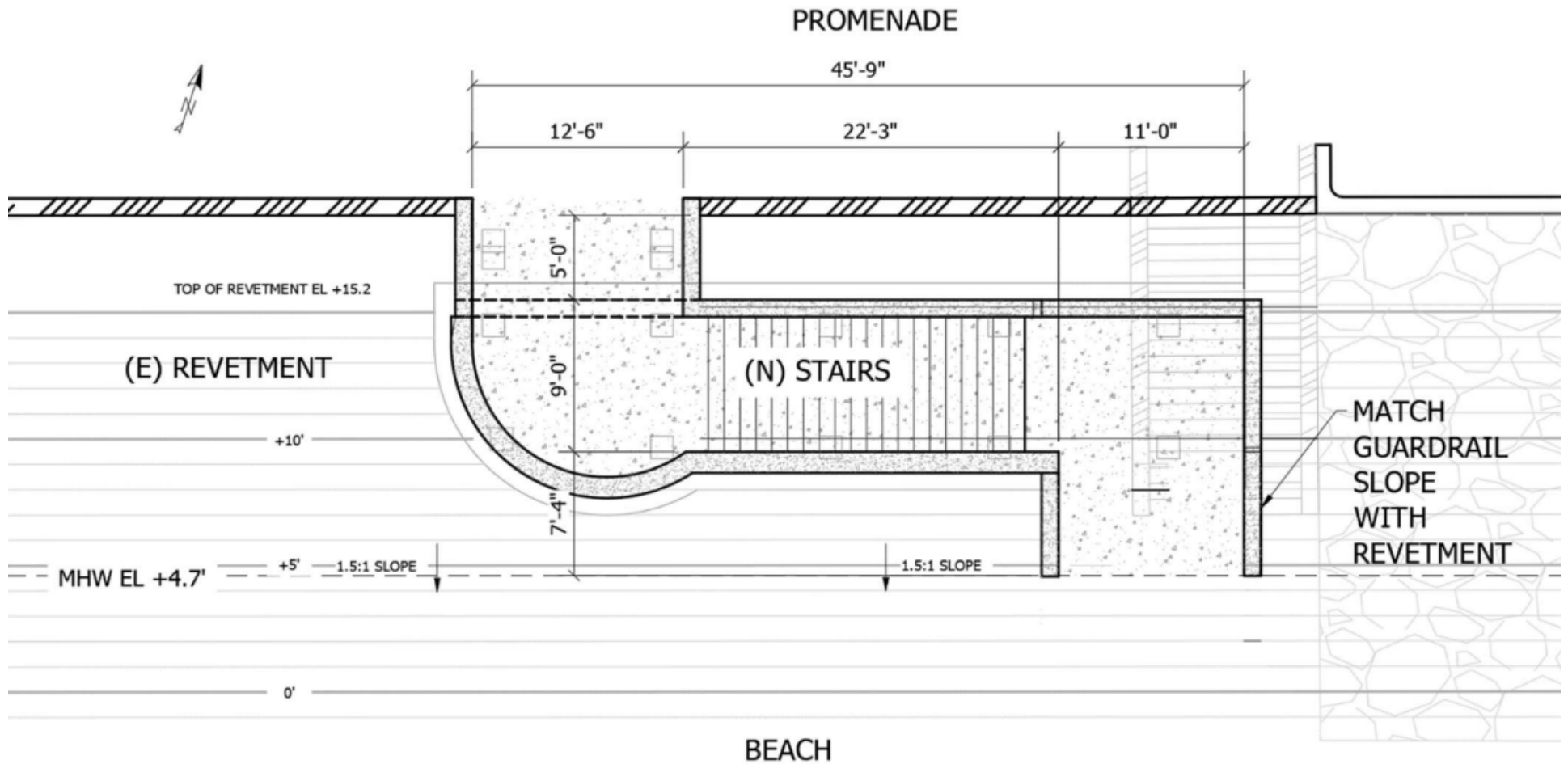
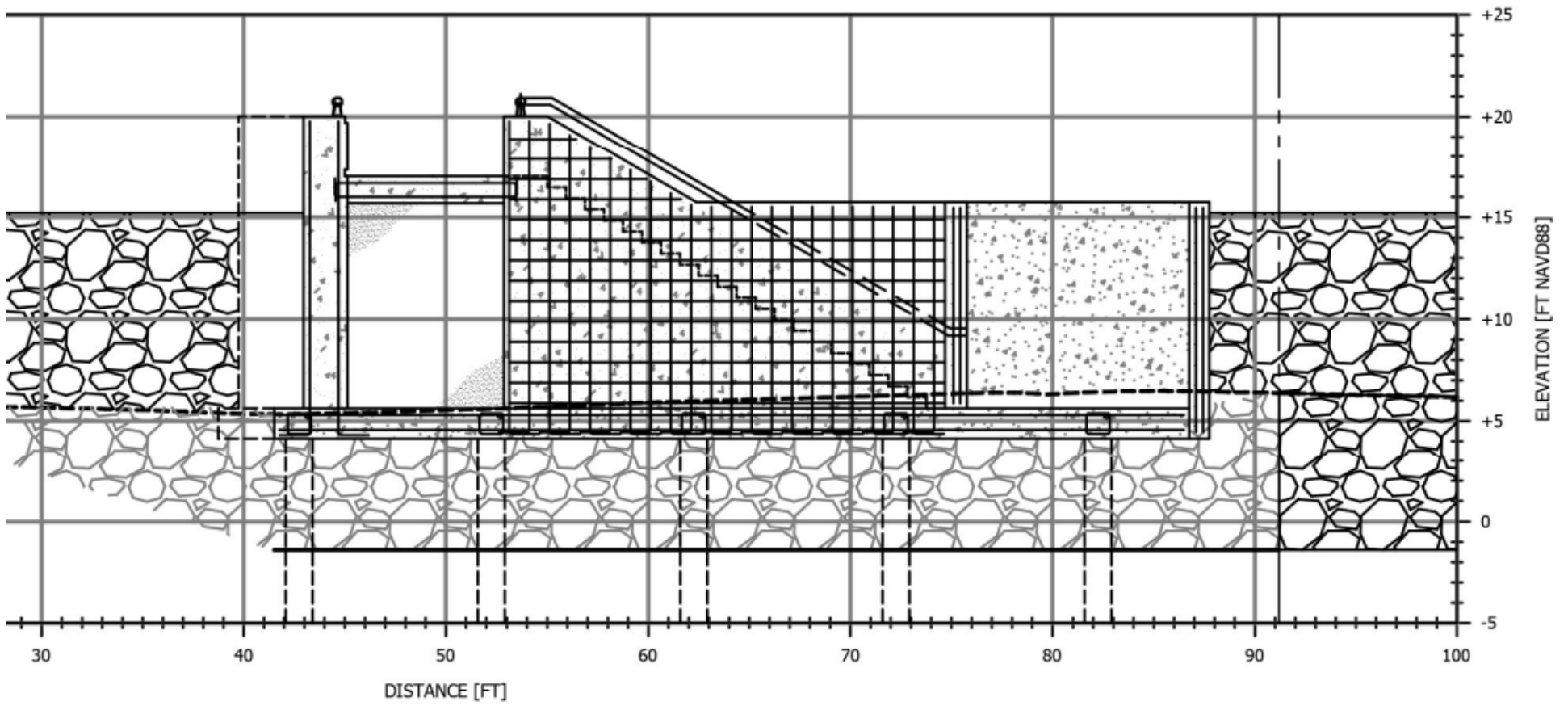
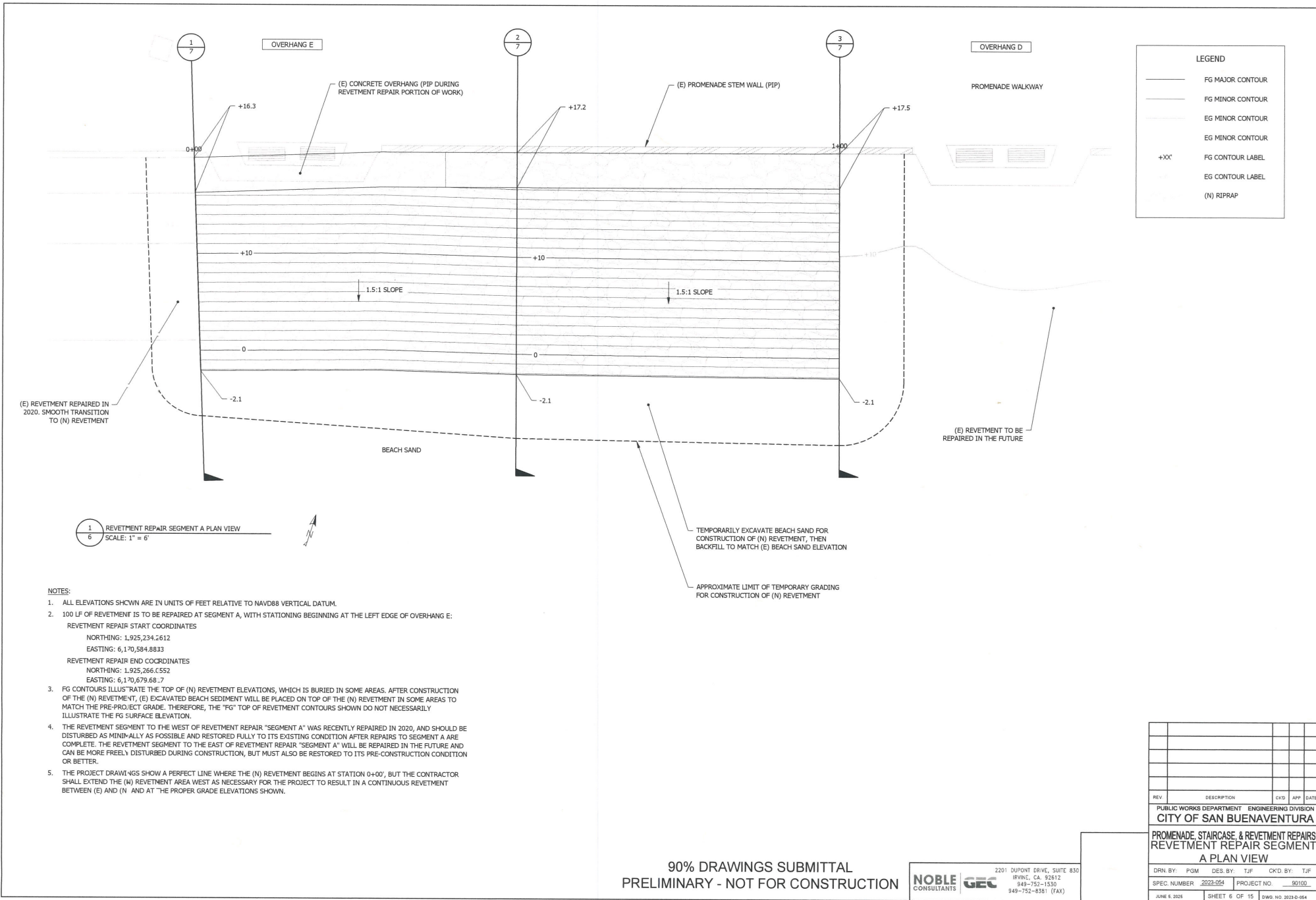


Exhibit 6
4-23-0791 and 4-25-0159
(City of Ventura)
Proposed Stairway Design

Modified concrete shear wall staircase typical cross section





1
6
REVETMENT REPAIR SEGMENT A PLAN VIEW
SCALE: 1" = 6'

- NOTES:**
- ALL ELEVATIONS SHOWN ARE IN UNITS OF FEET RELATIVE TO NAVD88 VERTICAL DATUM.
 - 100 LF OF REVETMENT IS TO BE REPAIRED AT SEGMENT A, WITH STATIONING BEGINNING AT THE LEFT EDGE OF OVERHANG E:
 REVETMENT REPAIR START COORDINATES
 NORTHING: 1,925,234.2612
 EASTING: 6,170,584.8833
 REVETMENT REPAIR END COORDINATES
 NORTHING: 1,925,266.6552
 EASTING: 6,170,679.68.7
 - FG CONTOURS ILLUSTRATE THE TOP OF (N) REVETMENT ELEVATIONS, WHICH IS BURIED IN SOME AREAS. AFTER CONSTRUCTION OF THE (N) REVETMENT, (E) EXCAVATED BEACH SEDIMENT WILL BE PLACED ON TOP OF THE (N) REVETMENT IN SOME AREAS TO MATCH THE PRE-PROJECT GRADE. THEREFORE, THE "FG" TOP OF REVETMENT CONTOURS SHOWN DO NOT NECESSARILY ILLUSTRATE THE FG SURFACE ELEVATION.
 - THE REVETMENT SEGMENT TO THE WEST OF REVETMENT REPAIR "SEGMENT A" WAS RECENTLY REPAIRED IN 2020, AND SHOULD BE DISTURBED AS MINIMALLY AS POSSIBLE AND RESTORED FULLY TO ITS EXISTING CONDITION AFTER REPAIRS TO SEGMENT A ARE COMPLETE. THE REVETMENT SEGMENT TO THE EAST OF REVETMENT REPAIR "SEGMENT A" WILL BE REPAIRED IN THE FUTURE AND CAN BE MORE FREELY DISTURBED DURING CONSTRUCTION, BUT MUST ALSO BE RESTORED TO ITS PRE-CONSTRUCTION CONDITION OR BETTER.
 - THE PROJECT DRAWINGS SHOW A PERFECT LINE WHERE THE (N) REVETMENT BEGINS AT STATION 0+00', BUT THE CONTRACTOR SHALL EXTEND THE (N) REVETMENT AREA WEST AS NECESSARY FOR THE PROJECT TO RESULT IN A CONTINUOUS REVETMENT BETWEEN (E) AND (N) AND AT THE PROPER GRADE ELEVATIONS SHOWN.

90% DRAWINGS SUBMITTAL
 PRELIMINARY - NOT FOR CONSTRUCTION

NOBLE GEC
 CONSULTANTS

2201 DUPONT DRIVE, SUITE 830
 IRVING, CA 92612
 949-752-1530
 949-752-8381 (FAX)

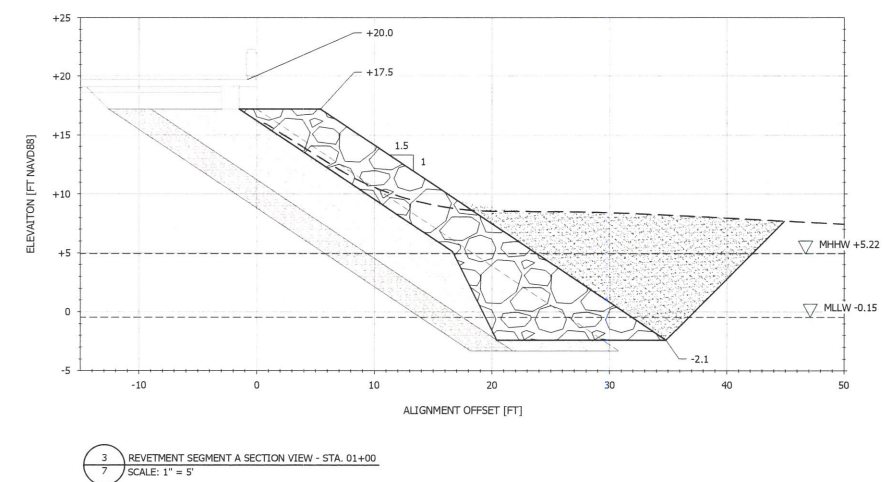
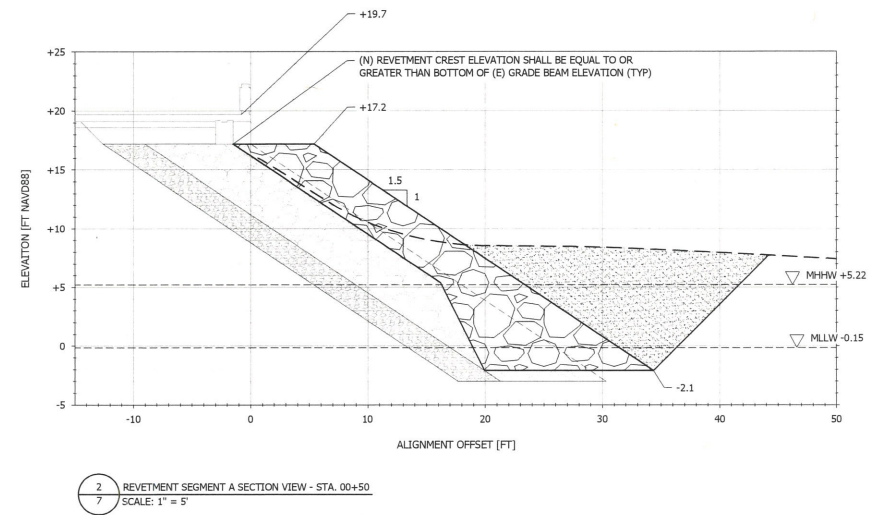
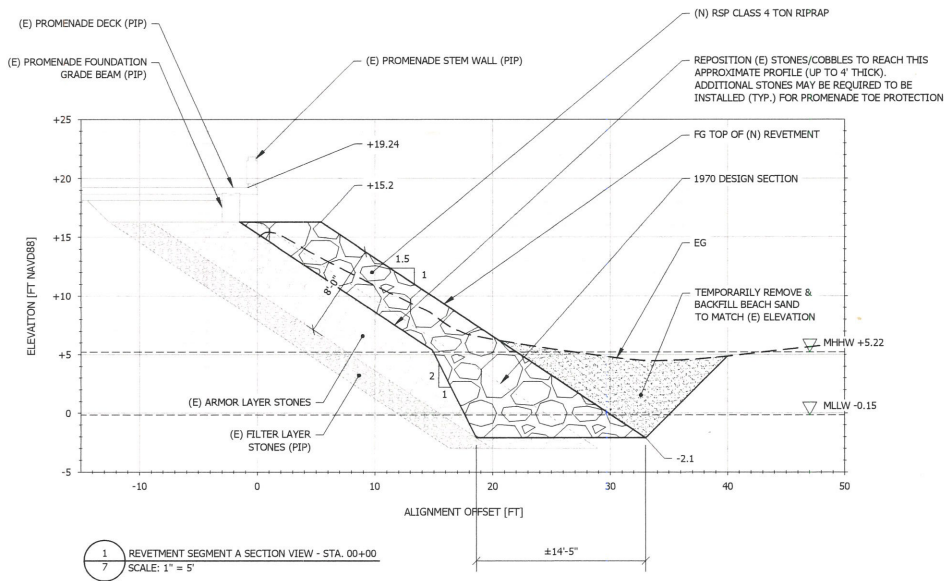
REV	DESCRIPTION	CKD	APP	DATE

PUBLIC WORKS DEPARTMENT ENGINEERING DIVISION
 CITY OF SAN BUENAVENTURA

PROMENADE, STAIRCASE, & REVETMENT REPAIRS
 REVETMENT REPAIR SEGMENT
 A PLAN VIEW

DRN BY: PGM DES BY: TJF CKD BY: TJF
 SPEC NUMBER 2023-054 PROJECT NO. 90100

JUNE 6, 2023 SHEET 6 OF 15 DWG. NO. 2023-0-054



LEGEND	
	FG
	EG
	(N) RIPRAP
	(E) RIPRAP ARMOR LAYER
	(E) RIPRAP FILTER LAYER
	(E) BEACH SAND BACKFILL

NOTES

1. THE EXACT LAYOUT AND DIMENSIONS OF THE EXISTING REVETMENT IS UNKNOWN. IT'S THE RESPONSIBILITY OF THE CONTRACTOR TO APPLY CONSTRUCTION METHODS NECESSARY TO SUCCESSFULLY COMPLETE THE PROJECT WORK IF FIELD CONDITIONS VARY FROM THE EXACT DIMENSIONS SHOWN ON THE DRAWINGS.

90% DRAWINGS SUBMITTAL
PRELIMINARY - NOT FOR CONSTRUCTION

2201 DUPONT DRIVE, SUITE 830
IRVING, CA. 92612
949-757-1530
949-752-8381 (FAX)

NOBLE GEC
CONSULTANTS

REV	DESCRIPTION	CHD	APP	DATE

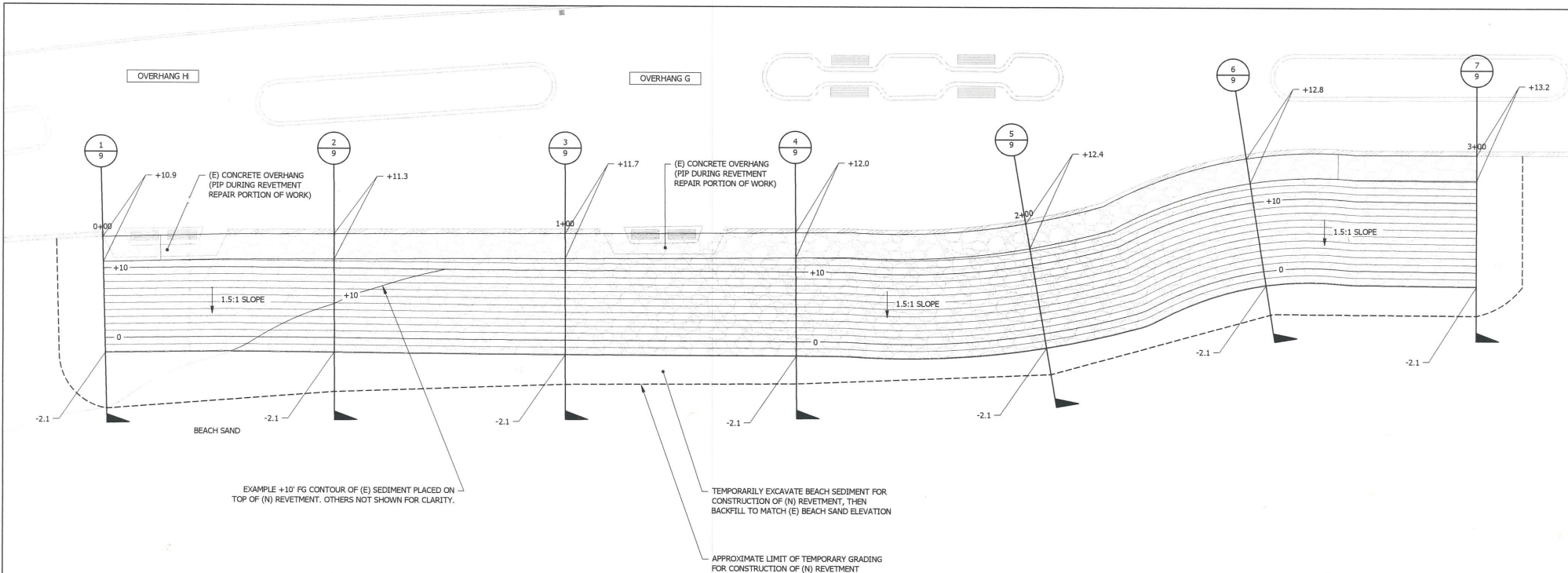
PUBLIC WORKS DEPARTMENT ENGINEERING DIVISION
CITY OF SAN BUENAVENTURA

PROMENADE, STAIRCASE, & REVETMENT REPAIRS
REVETMENT REPAIR SEGMENT
A SECTION VIEWS

DRN BY: PGM DES BY: T.J.F. CKD BY: T.J.F.

SPEC NUMBER 2022-054 PROJECT NO. 90100

JUNE 6, 2025 SHEET 7 OF 15 DWG NO. 2022-0-054



1
8
REVETMENT REPAIR SEGMENT "B" PLAN VIEW
SCALE: 1" = 10'



- NOTES:**
- ALL ELEVATIONS SHOWN ARE IN FEET RELATIVE TO NAVD88 VERTICAL DATUM.
 - 300 LF OF REVETMENT IS TO BE REPAIRED AT SEGMENT B, WITH STATIONING BEGINNING AT THE LEFT EDGE OF OVERHANG H:
 REVETMENT REPAIR START COORDINATES
 NORTHING: 1,924,996.1800
 EASTING: 6,169,357.5061
 REVETMENT REPAIR END COORDINATES
 NORTHING: 1,925,105.8405
 EASTING: 6,170,134.6466
 - FG CONTOURS ILLUSTRATE THE TOP OF (N) REVETMENT ELEVATIONS, WHICH IS BURIED IN SOME AREAS. AFTER CONSTRUCTION OF THE (N) REVETMENT, (E) EXCAVATED BEACH SEDIMENT WILL BE PLACED ON TOP OF THE (N) REVETMENT IN SOME AREAS TO MATCH THE PRE-PROJECT GRADE. THEREFORE, THE "FG" TOP OF REVETMENT CONTOURS SHOWN DO NOT NECESSARILY ILLUSTRATE THE FG SURFACE ELEVATION.
 - BEACH SEDIMENT MATERIAL EXCAVATED FOR CONSTRUCTION OF THE (N) REVETMENT MAY CONSIST OF A COMBINATION OF SAND, RIPRAP, OR OTHER MIXED-SIZED STONES. EXCAVATED MATERIALS SHALL BE RE-SET TO BEST MATCH THE PRE-PROJECT CONDITION. E.G. AREAS AND DEPTHS WITH MORE STONE THAN SAND SHOULD BE GRADED SIMILARLY AFTER THE (N) REVETMENT'S CONSTRUCTION.

APPROXIMATE LIMIT OF TEMPORARY GRADING FOR CONSTRUCTION OF (N) REVETMENT

LEGEND

	FG MAJOR CONTOUR
	FG MINOR CONTOUR
	EG MINOR CONTOUR
	EG MINOR CONTOUR
+XX'	FG CONTOUR LABEL
	EG CONTOUR LABEL
	(N) RIPRAP

REV	DESCRIPTION	CHK	APP	DATE

PUBLIC WORKS DEPARTMENT ENGINEERING DIVISION
CITY OF SAN BUENAVENTURA
 PROMENADE, STAIRCASE, & REVETMENT REPAIRS
 REVETMENT REPAIR SEGMENT
B PLAN VIEW

DRN BY: PGM DES BY: T/JF OKD BY: T/JF
 SPEC NUMBER 2023-054 PROJECT NO. 90100

JUNE 5, 2023 SHEET 8 OF 15 DWG. NO. 2023-0-054

90% DRAWINGS SUBMITTAL
 PRELIMINARY - NOT FOR CONSTRUCTION

NOBLE GEC
 CONSULTANTS

2201 DUPONT DRIVE, SUITE 830
 IRVING, CA 92612
 949-752-1530
 949-752-8381 (FAX)

Exhibit 10
4-23-0791 and 4-25-0159
(City of Ventura)
Revised Stairway Illustration

Modified concrete shear wall staircase plan

